



**MIDWEST SURVEYS**  
 LOGGING - PERFORATING - CONSULTING SERVICES  
 P.O. Box 68, Osawatomie, KS 66064  
 913 / 755 - 2128

**GAMMA RAY / NEUTRON / CCL**

File No. \_\_\_\_\_

Company: Lakeshore Operating, LLC  
 Well: Fuller No. LO-34

Field: Vernon  
 County: Woodson State: Kansas

Location: 5115 FSL & 1560' FEL  
 NE-NE-NW-NE

Sec. 33 Typ. 23S Rge. 16E Elev. 1106'  
 Permian Datum GL  
 Log Measured From GL  
 Drilling Measured From GL

Date: 01-09-2015  
 Run Number: One  
 Depth Driller: 1168.0  
 Depth Logger: 1143.7  
 Bottom Logged Interval: 200.0  
 Top Log Interval: Full

Fluid Level: Full

Type Fluid: Water  
 Density / Viscosity: NA  
 Salinity - PPM Cl: NA  
 Max. Recorded Temp: NA  
 Estimated Cement Top: 0.0

Equipment No.: 107 Location: Osawatomie  
 Recorded By: Steve Jindrich  
 Witnessed By: Wesley Keldham

BORE-HOLE RECORD				CASING RECORD			
Run	BIT	FROM	TO	SIZE	WGT.	FROM	TO
One	9.875"	0.0	42.0	7.00"	14.0 #	0.0	42.0
Two	5.875"	42.0	1168.0	2.875"	6.5 #	0.0	1168.0

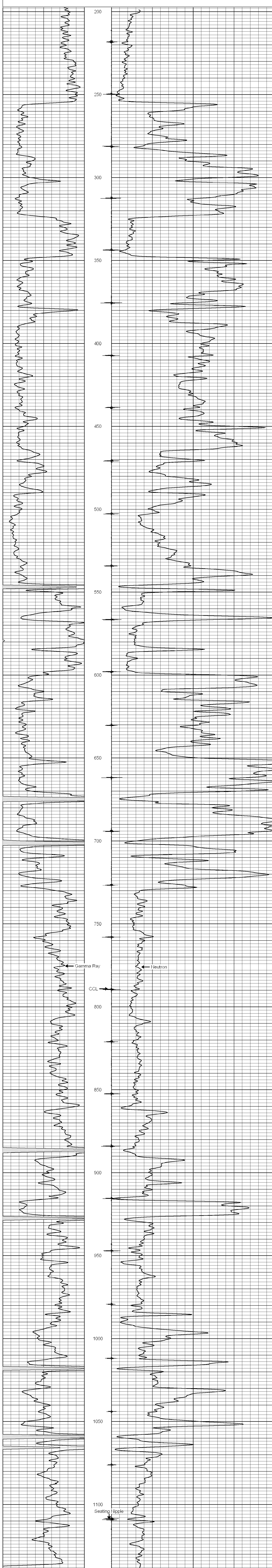
<<< Fold Here >>>

All interpretations are opinions based on inferences from electrical or other measurements and we cannot and do not guarantee the accuracy or correctness of any interpretation, and we shall not, except in the case of gross or willful negligence on our part, be liable or responsible for any loss, costs, damages, or expenses incurred or sustained by anyone resulting from any interpretation made by any of our officers, agents or employees. These interpretations are also subject to our general terms and conditions set out in our current Price Schedule.

Comments

Drilling Contractor :  
 Jackman Oilfield Services

Database File: fuller34lo.db  
 Dataset Pathname: pass1  
 Presentation Format: gr-n-ccl  
 Dataset Creation: Fri Jan 09 10:09:41 2015 by Log SCH 1111116  
 Charted by: Depth in Feet scaled 1:240



0 Gamma Ray (cps) 150  
 150 Gamma Ray (cps) 300  
 -1 CCL 1  
 10 Neutron (cps) 2100