



MIDWEST SURVEYS
 LOGGING - PERFORATING - CONSULTING SERVICES
 P.O. Box 66, Osawatomie, KS 66064
 913.735.2128

GAMMA RAY / NEUTRON / CCL

File No.

Company **SCZ Resources, LLC.**
 Well **Kendall Dice No. D-45**
 Field **Humbolt - Chanute**
 County **Allen** State **Kansas**

Location **825' FNL & 825' FWL**
NW-SE-NW-4NW

Sec. **27** Twp. **26s** Rge. **18e**
 Permit/Daun Log Measured From Drilling Measured From

Elevation **NA**
 KB NA
 D.F. NA
 GL NA

Date **08-14-2014**

Run Number **One**

Depth Driller **884.0**

Depth Logger **851.0**

Bottom Logged Interval **850.0**

Top Log Interval **20.0**

Fluid Level **Full**

Type Fluid **Water**

Density / Viscosity **NA**
 Salinity - PPM Cl **NA**
 Max Recorded Temp **NA**
 Estimated Cement Top **NA**
 Equipment No. **0.0**
 Location **Osawatomie**
 Recorded By **Gary Windisch**
 Witnessed By **Jorge Ranz**

BOREHOLE RECORD				CASING RECORD			
RUN	BIT	FROM	TO	SIZE	WGT.	FROM	TO
One	9.875"	0.0	21.0	7.00"	17.0#	0.0	21.0
Two	5.825"	21.0	894.0	2.875"	6.5 #	0.0	894.0

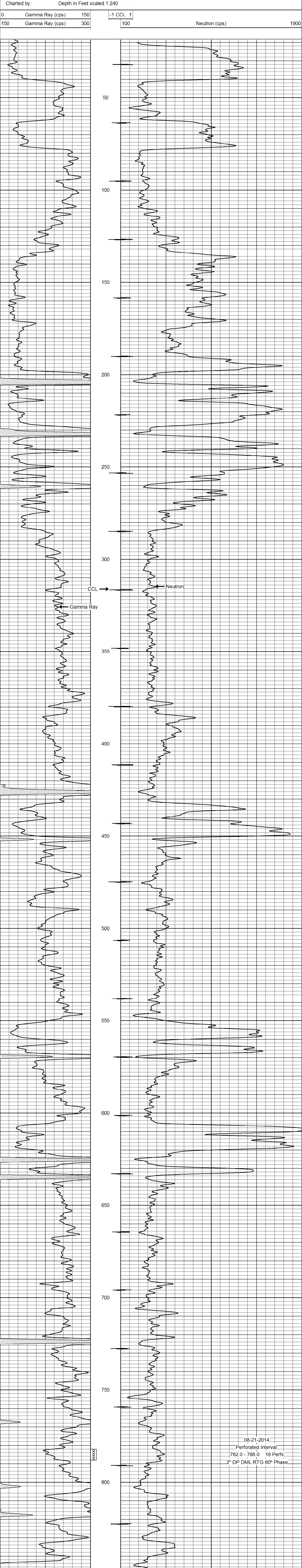
<<< Fold Here >>>

All interpretations are opinions based on inferences from electrical or other measurements and we cannot and do not guarantee the accuracy or correctness of any interpretation, and we shall not, except in the case of gross or willful negligence on our part, be liable or responsible for any loss, costs, damages, or expenses incurred or sustained by anyone resulting from any interpretation made by any of our officers, agents or employees. These interpretations are also subject to our general terms and conditions set out in our current Price Schedule.

Comments

Drilling Contractor :
Evans Energy & Development, Inc.

Database File: dice45dk.db
 Dataset Pathname: pass1
 Presentation Format: gr-n-ccl
 Dataset Creation: Thu Aug 14 12:59:46 2014 by Log SCH 111116
 Charted by: Depth in Feet scaled 1:240



08-21-2014
 Perforated Interval
 782.0 - 788.0 19 Perfs
 2" DP DML RTG 60° Phase

