



MIDWEST SURVEYS
 LOGGING - PERFORATING - CONSULTING SERVICES
 P.O. Box 66, Osawatomie, KS 66064
 913.735.2128

GAMMA RAY / NEUTRON / CCL

File No. _____

Company **SCZ Resources, LLC.**

Well **Kendall Dice No. D-52**

Field **Humbolt - Chanute**

County **Allen** State **Kansas**

Location **825' FNL & 495' FWL
NE-SW-1/4-11W**

Other Services
Perforate

Sec. 27
Permit/Datum
Log Measured From
Drilling Measured From

Typ. 26s
Rge. 18e
Elevation NA
KB NA
D.F. NA
GL NA

Date 03-14-2014

Run Number One

Depth Driller 880.0

Depth Logger 851.3

Bottom Logged Interval 850.3

Top Log Interval 20.0

Fluid Level

Type Fluid Water

Density / Viscosity NA

Salinity - PPM Cl NA

Max Recorded Temp NA

Estimated Cement Top 0.0

Equipment No. Location 102 Osawatomie

Recorded By Gary Windisch

Witnessed By Jørgen Ranz

BOREHOLE RECORD				CASING RECORD			
RUN No.	BIT FROM	TO	SIZE	WGT.	FROM	TO	
One	9.875"	0.0	22.7	7.00"	17.0"	0.0	22.7
Two	5.825"	22.7	890.0	2.875"	6.5 #	0.0	854.3

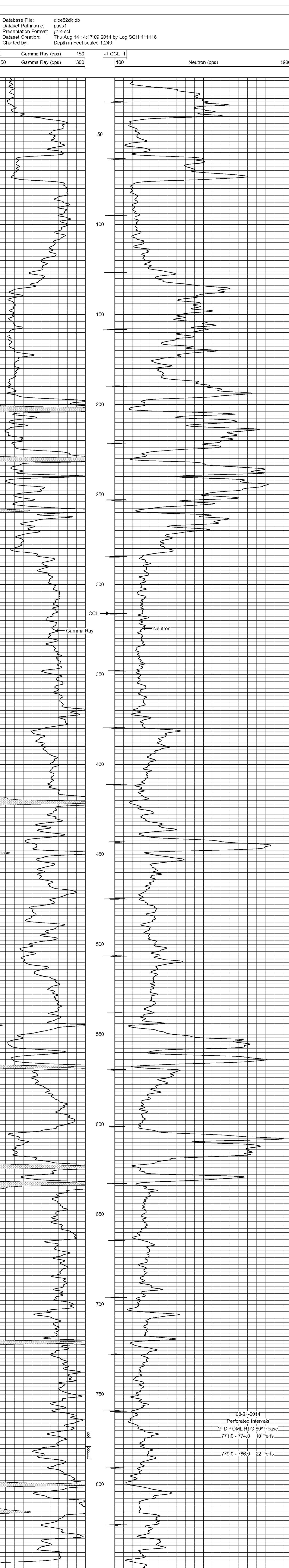
<<< Fold Here >>>

All interpretations are opinions based on inferences from electrical or other measurements and we cannot and do not guarantee the accuracy or correctness of any interpretation, and we shall not, except in the case of gross or willful negligence on our part, be liable or responsible for any loss, costs, damages, or expenses incurred or sustained by anyone resulting from any interpretation made by any of our officers, agents or employees. These interpretations are also subject to our general terms and conditions set out in our current Price Schedule.

Comments

Drilling Contractor :
Evans Energy & Development, Inc.

Database File: dice52dk.db
 Dataset Pathname: pass1
 Presentation Format: gr-n-ccl
 Dataset Creation: Thu Aug 14 14:17:09 2014 by Log SCH 111116
 Charted by: Depth in Feet scaled 1:240



BOREHOLE RECORD				CASING RECORD			
RUN No.	BIT FROM	TO	SIZE	WGT.	FROM	TO	
One	9.875"	0.0	22.7	7.00"	17.0"	0.0	22.7
Two	5.825"	22.7	890.0	2.875"	6.5 #	0.0	854.3