



WIRELINE SERVICES, INC.
CHANUTE, KANSAS

**GAMMA RAY
NEUTRON
COMPLETION LOG**

Company **A X & P, INC.**
Well **UNIT 1 FEE #16**
Field **NEODESHA**
County **WILSON**
State **KANSAS**

Company **A X & P, INC.**
Well **UNIT 1 FEE #16**
Field **NEODESHA**
County **WILSON** State **KANSAS**

Location: **API # : 15-205-28302-00-00** Other Services
980' FSL & 5040' FEL
SEC 21 TWP 30S RGE 16E
SW NW SW SW
Permanent Datum **GL** Elevation **793'EST.**
Log Measured From **GL** K.B.
Drilling Measured From **GL** D.F.
G.L. 793'EST.

Date	10-20-14		
Run Number	1 NW		
Depth Driller	860'		
Depth Logger	847.5'		
Top Log Interval	0		
Bottom Logged Interval	847.5'		
Fluid Level	FULL		
Type Fluid	WATER		
Production Casing	2 7/8" @ TD	@	@
Max. Recorded Temp.			
Estimated Cement Top			
Calculated Cement Top			
Amount & Type Cement			
Amount & Type Admix			
Drilling Contractor			
Equipment Number	103		
Location			
Recorded By	SOLOMON, B.		
Witnessed By	HANKE, JJ		

<<< Fold Here >>>

All interpretations are opinions based on inferences from electrical or other measurements and we cannot and do not guarantee the accuracy or correctness of any interpretation, and we shall not, except in the case of gross or willful negligence on our part, be liable or responsible for any loss, costs, damages, or expenses incurred or sustained by anyone resulting from any interpretation made by any of our officers, agents or employees. These interpretations are also subject to our general terms and conditions set out in our current Price Schedule.

Comments

THANK YOU

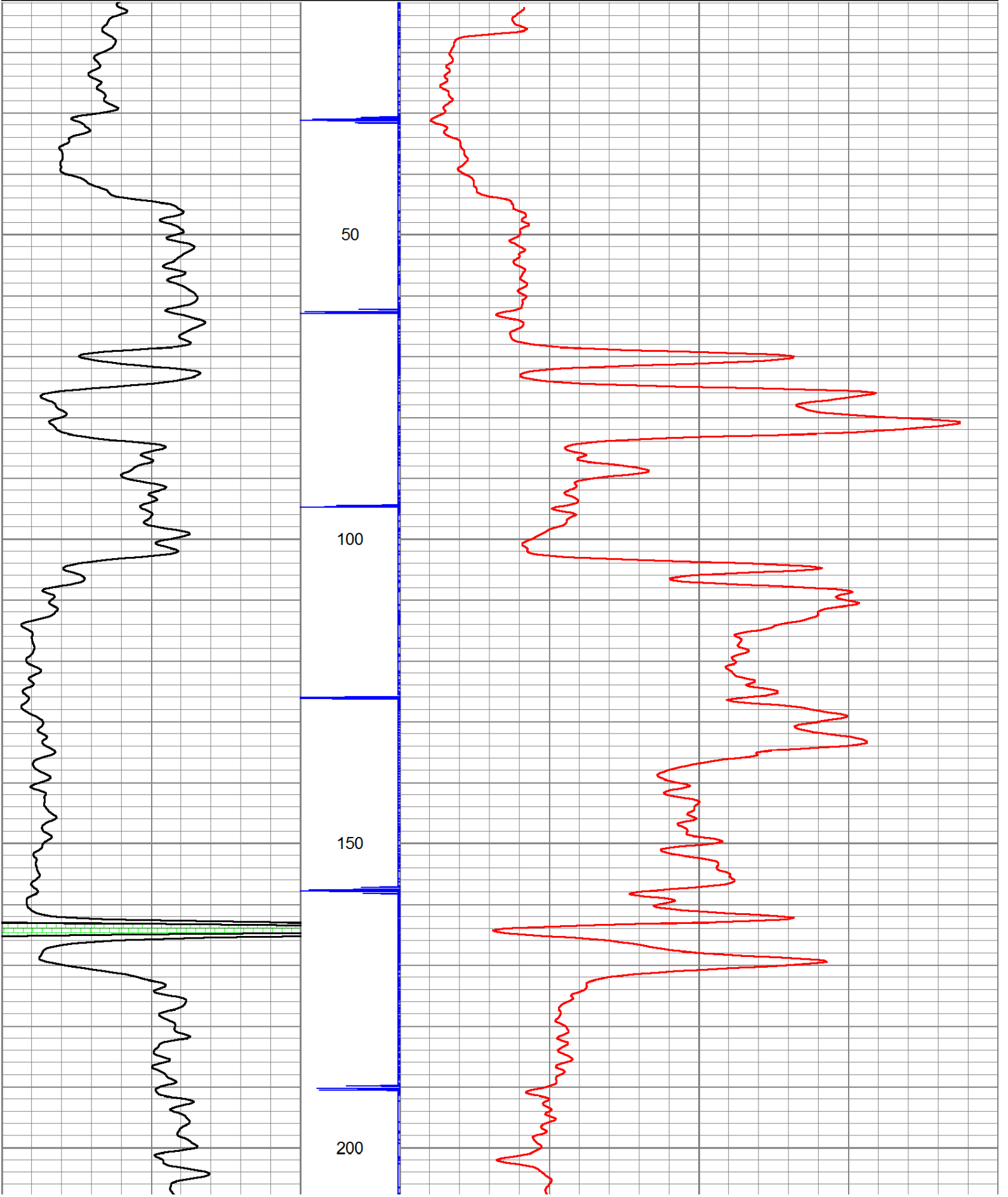
Sensor	Offset (ft)	Schematic	Description	Len (ft)	OD (in)	Wt (lb)

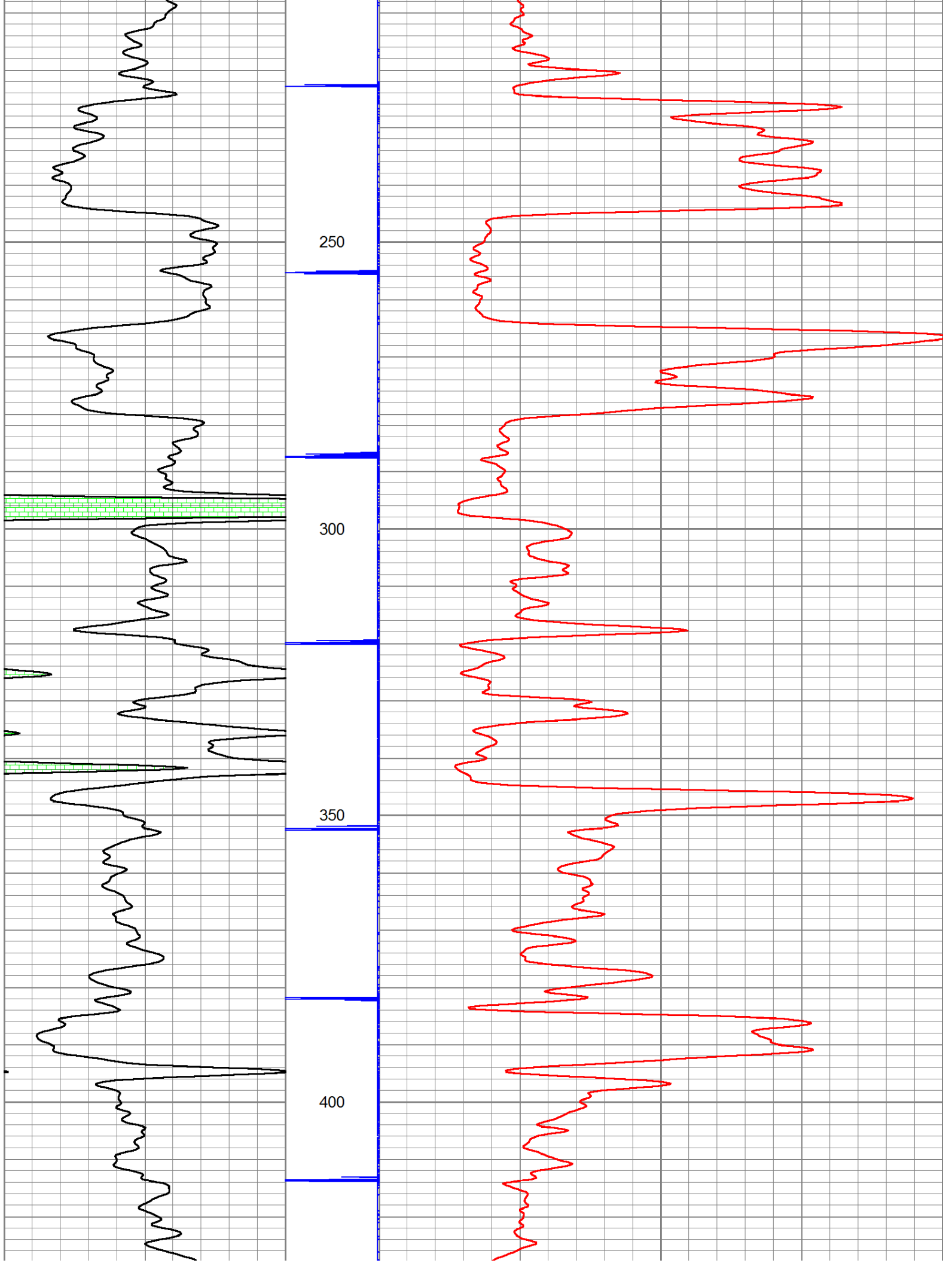
GR	7.59		GR-TITAN_169 (TIT169_001) Titan 1 11/16" Gamma Ray	4.75	1.69	20.00
CCL	5.05		CCL-TITAN_169 (TIT169) Titan 1 11/16" Logging CCL	1.83	1.69	7.50
NEU	0.63		NEU-TITAN (TIT801) TITAN 1 11/16" Neutron	4.33	1.69	25.00

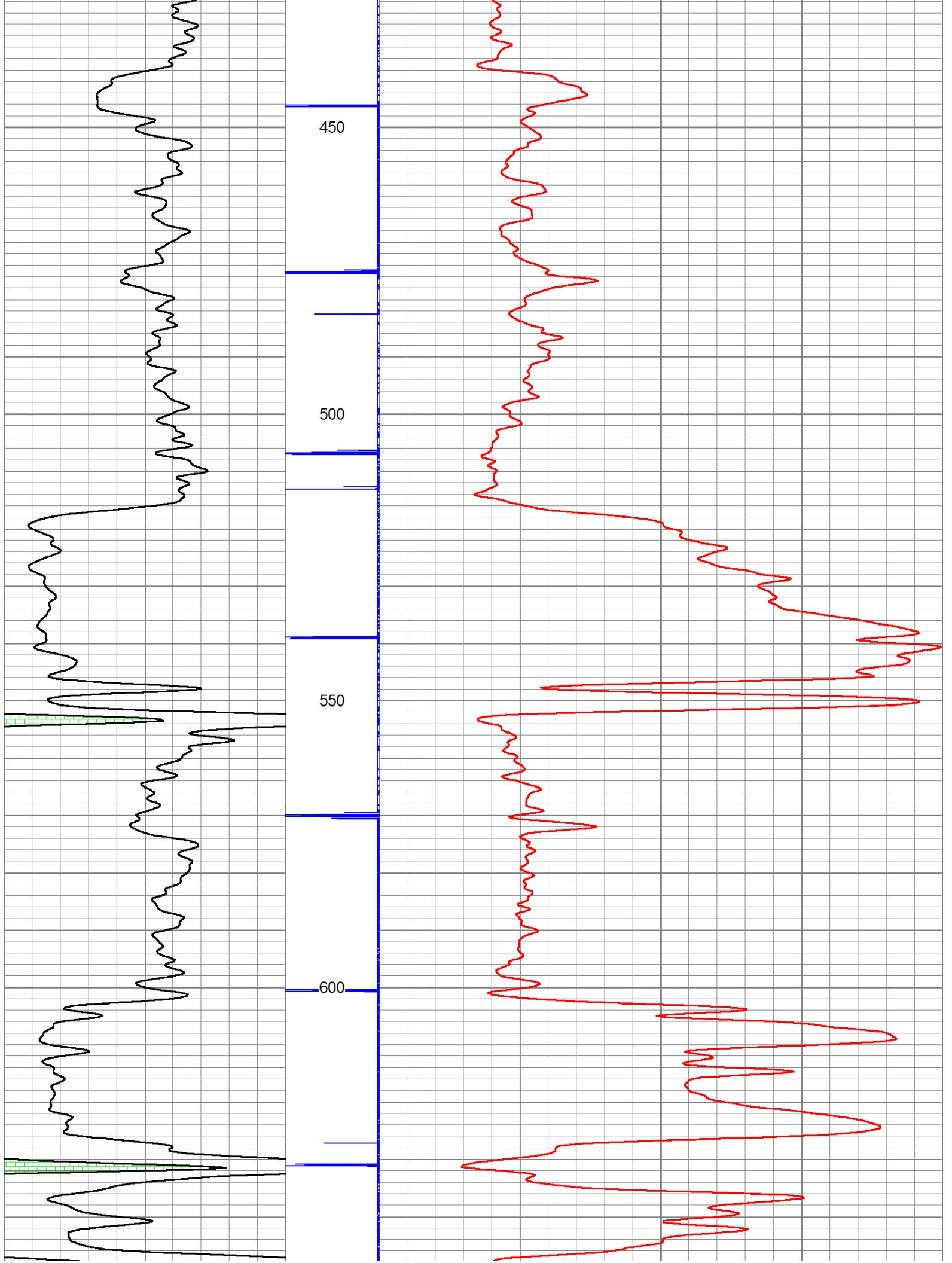
Dataset: unit 1 fee # 16.db: field/well/run1/pass1
 Total Length: 10.92 ft
 Total Weight: 52.50 lb
 O.D.: 1.69 in

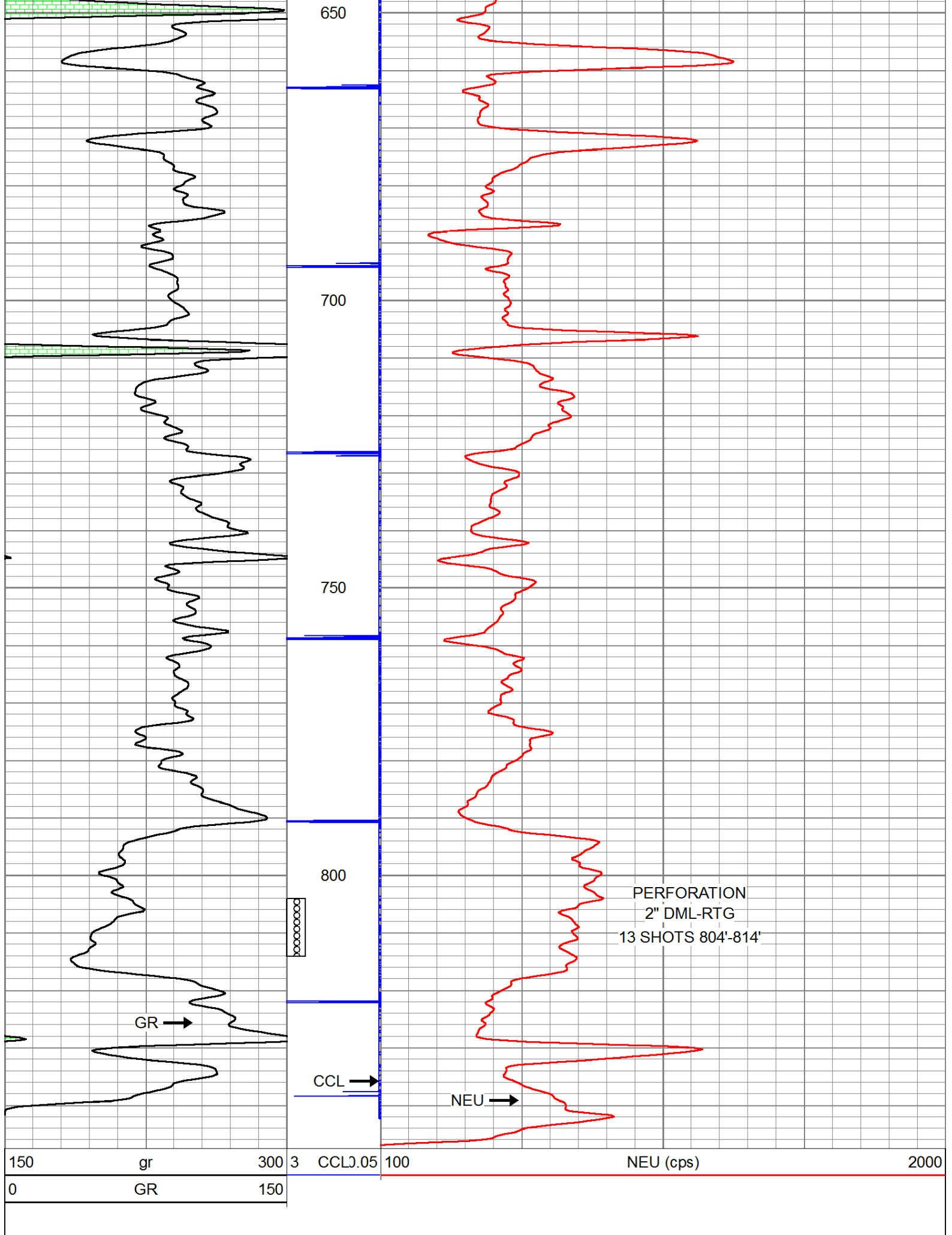
Database File: g:\unit 1 fee # 16.db
 Dataset Pathname: pass1
 Presentation Format: gr-n-ccl

150	gr	300	3	CCLJ.05	100	NEU (cps)	2000
0	GR	150					









650

700

750

800

PERFORATION
2" DML-RTG
13 SHOTS 804'-814'

GR →

CCL →

NEU →

150	gr	300
0	GR	150

3	CCLJ.05	100	NEU (cps)	2000
---	---------	-----	-----------	------



Company	A X & P, INC.
Well	UNIT 1 FEE #16
Field	NEODESHA
County	WILSON SEC. 21 TWP. 30S RGE. 16E
State	KANSAS
Date	10-20-14