



MIDWEST SURVEYS
 LOGGING - PERFORATING - CONSULTING SERVICES
 P.O. Box 88, Osawatomie, KS 66064
 913 / 755 - 2128

GAMMA RAY / NEUTRON / CCL

File No. _____

Company **SCZ Resources, LLC.**

Well **Kendall Dice No. D-42**

Field **Humbolt - Chanute**

County **Allen** State **Kansas**

Location **165' FSL & 825' FWL**

Other Services **Perforate**

Sec. **22** Twp. **26S** Rge. **18E**

Perforate Datum **GL** Elevation **NA**

Log Measured From **GL**

Drilling Measured From **GL**

Date **09-17-2014**

Run Number **One**

Depth Driller **840.0**

Depth Logger **829.5**

Bottom Logged Interval **828.5**

Top Log Interval **20.0**

Fluid Level **Full**

Type Fluid **Water**

Density / Viscosity **NA**

Salinity - PPM Cl **NA**

Max Recorded Temp **NA**

Estimated Cement Top **0.0**

Equipment No. **102** Location **Osawatomie**

Recorded By **Gary Mindes**

Witnessed By **Jorge Ranz**

BORE-HOLE RECORD

RUN No. **One** BIT **9.875"** FROM **0.0** TO **20.0** SIZE **7.00"** WGT. **17#** FROM **0.0** TO **20.0**

CASING RECORD

Run No. **Two** BIT **5.825"** FROM **20.0** TO **840.0** SIZE **2.875"** WGT. **6.5 #** FROM **0.0** TO **833.0**

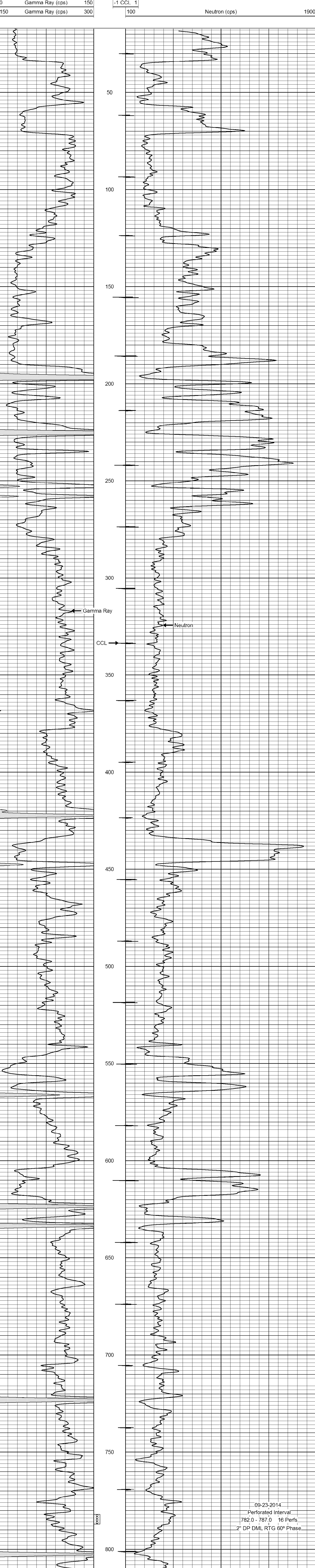
<<< Fold Here >>>

All interpretations are opinions based on inferences from electrical or other measurements and we cannot and do not guarantee the accuracy or correctness of any interpretation, and we shall not, except in the case of gross or willful negligence on our part, be liable or responsible for any loss, costs, damages, or expenses incurred or sustained by anyone resulting from any interpretation made by any of our officers, agents or employees. These interpretations are also subject to our general terms and conditions set out in our current Price Schedule.

Comments

Drilling Contractor :
JTC Oil, Inc.

Database File: dice42dk.db
 Dataset Pathname: pass1
 Presentation Format: gr-n-ccl
 Dataset Creation: Wed Sep 17 11:49:29 2014 by Log SCH 111116
 Charted by: Depth in Feet scaled 1:240



09-23-2014
 Perforated Interval
 782.0 - 787.0 16 Perfs
 2" DP DML RTG 60° Phase

0 Gamma Ray (cps) 150
 150 Gamma Ray (cps)
 -1 CCL 1
 100 Neutron (cps) 1900