



Pioneer Energy Services

# Microresistivity Log

API No.	15-109-21270-00-00		
Company	Black Tea Oil, LLC		
Well	Krebs P #2		
Field	N/A		
County	Logan	State	Kansas
Location	2245' FSL & 590' FEL		
Sec: 29	Twp: 14 S	Rge: 32 W	
Permanent Datum	Ground Level	Elevation 2652	
Log Measured From	Kelly Bushing	9	Ft. Above Perm. Datum
Drilling Measured From	Kelly Bushing		
Other Services	CNL/CDL DIL/BHCS		
Elevation	K.B. 2661 D.F. G.I.L. 2652		

Date	05-08-2014	
Run Number	Two	
Depth Driller	4410	
Depth Logger	4416	
Bottom Logged Interval	4415	
Top Log Interval	3100	
Casing Driller	13.375 @ 265	
Casing Logger	262	
Bit Size	7.875	
Type Fluid in Hole	Chemical	
Salinity, ppm CL	6000	
Density / Viscosity	8.9	51
pH / Fluid Loss	9.5	8.8
Source of Sample	Flowline	
Rm @ Meas. Temp	0.48 @	75
Rmf @ Meas. Temp	0.36 @	75
Rmc @ Meas. Temp	0.65 @	75
Source of Rmf / Rmc	Charts	
Rm @ BHT	0.30 @	120
Operating Rig Time	5 Hours	
Max Rec. Temp. F	120	
Equipment Number	17	
Location	Hays	
Recorded By	Y. Ruiz	
Witnessed By	Kevin Bailey	

<<< Fold Here >>>

All interpretations are opinions based on inferences from electrical or other measurements and we cannot and do not guarantee the accuracy or correctness of any interpretation, and we shall not, except in the case of gross or willful negligence on our part, be liable or responsible for any loss, costs, damages, or expenses incurred or sustained by anyone resulting from any interpretation made by any of our officers, agents or employees. These interpretations are also subject to our general terms and conditions set out in our current Price Schedule.

### Comments

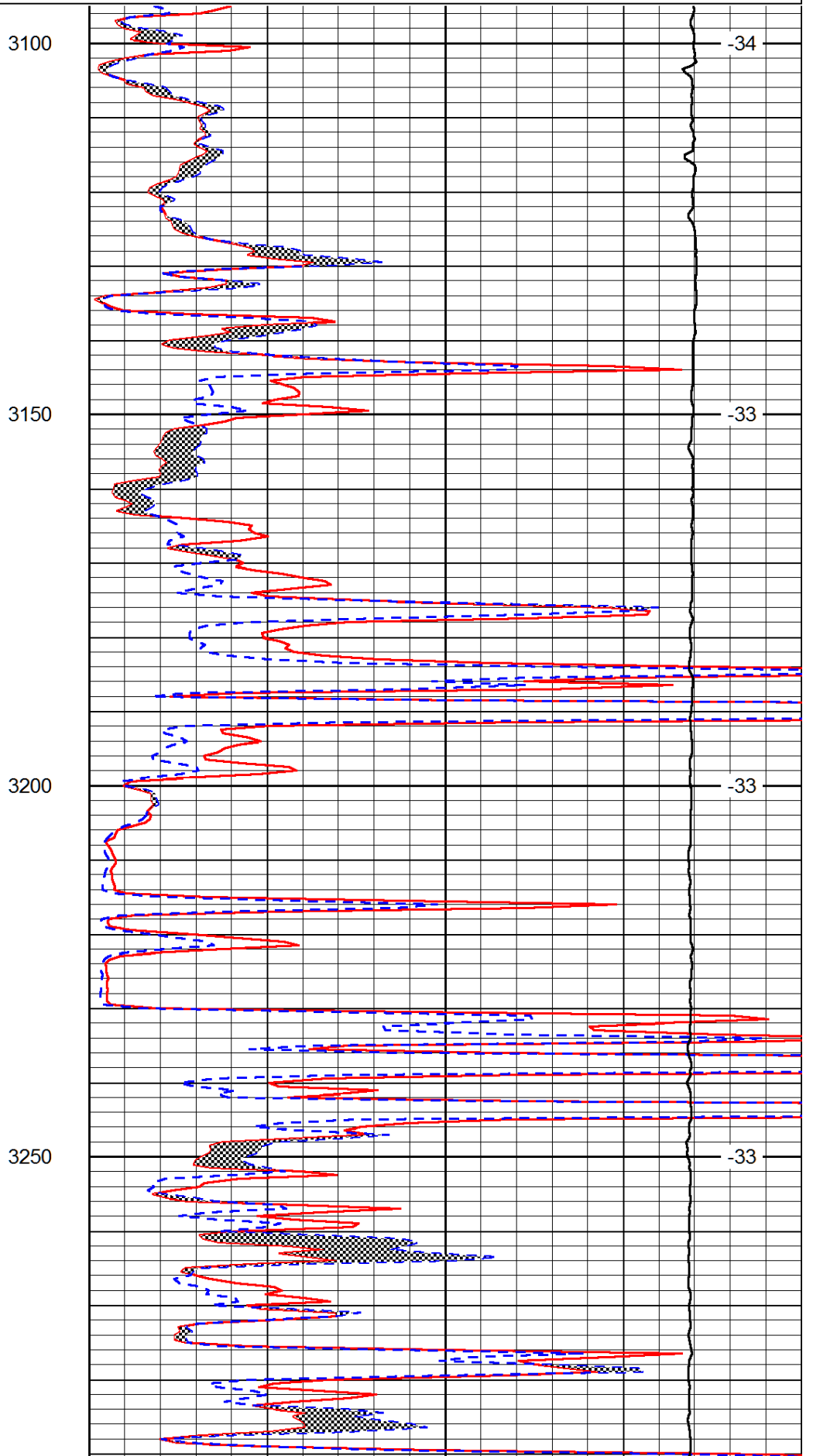
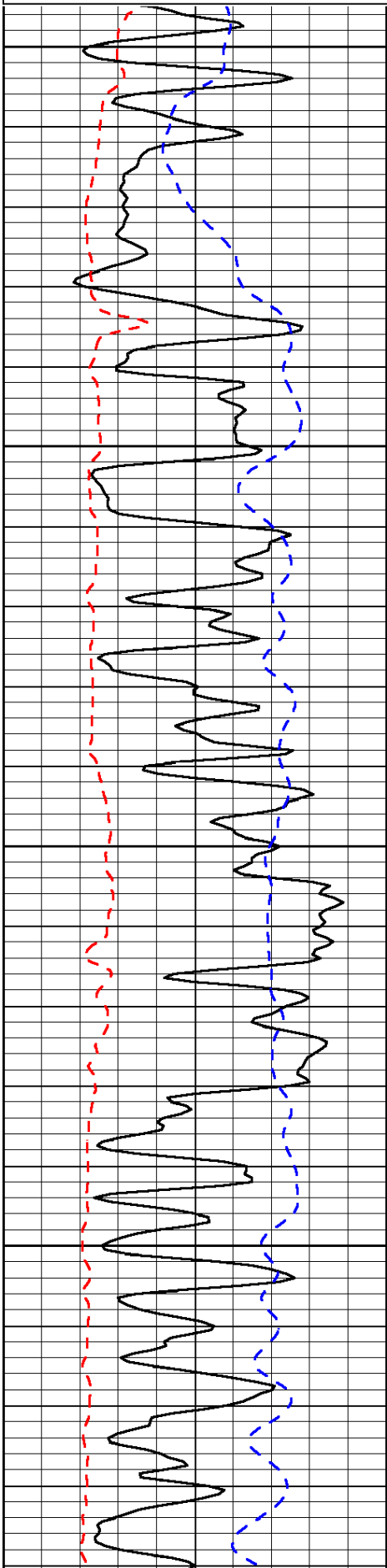
Thank you for using Log-Tech, Inc.  
 (785) 625-3858  
 Oakley,  
 South to JayHawk Rd, 1 South,  
 West into at Gates ( About 3 Miles West)

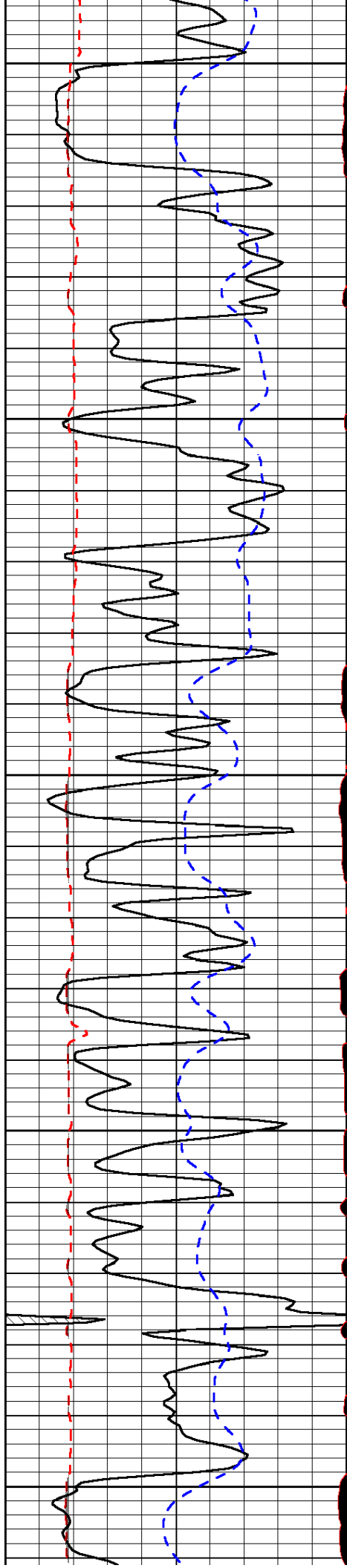
Database File: black\_tea\_050814hd.db  
 Dataset Pathname: DIL/btstk  
 Presentation Format: micro  
 Dataset Creation: Thu May 08 20:36:40 2014  
 Charted by: Depth in Feet scaled 1:240

0	Gamma Ray	150
6	MCAL (GAPI)	16
2.875	Mud Cake (GAPI)	7.875
-200	SP (mV)	0

0	Micro Inverse 1 X 1	40
0	Micro Normal 2"	40
10000	Line Weight	0

LSPD





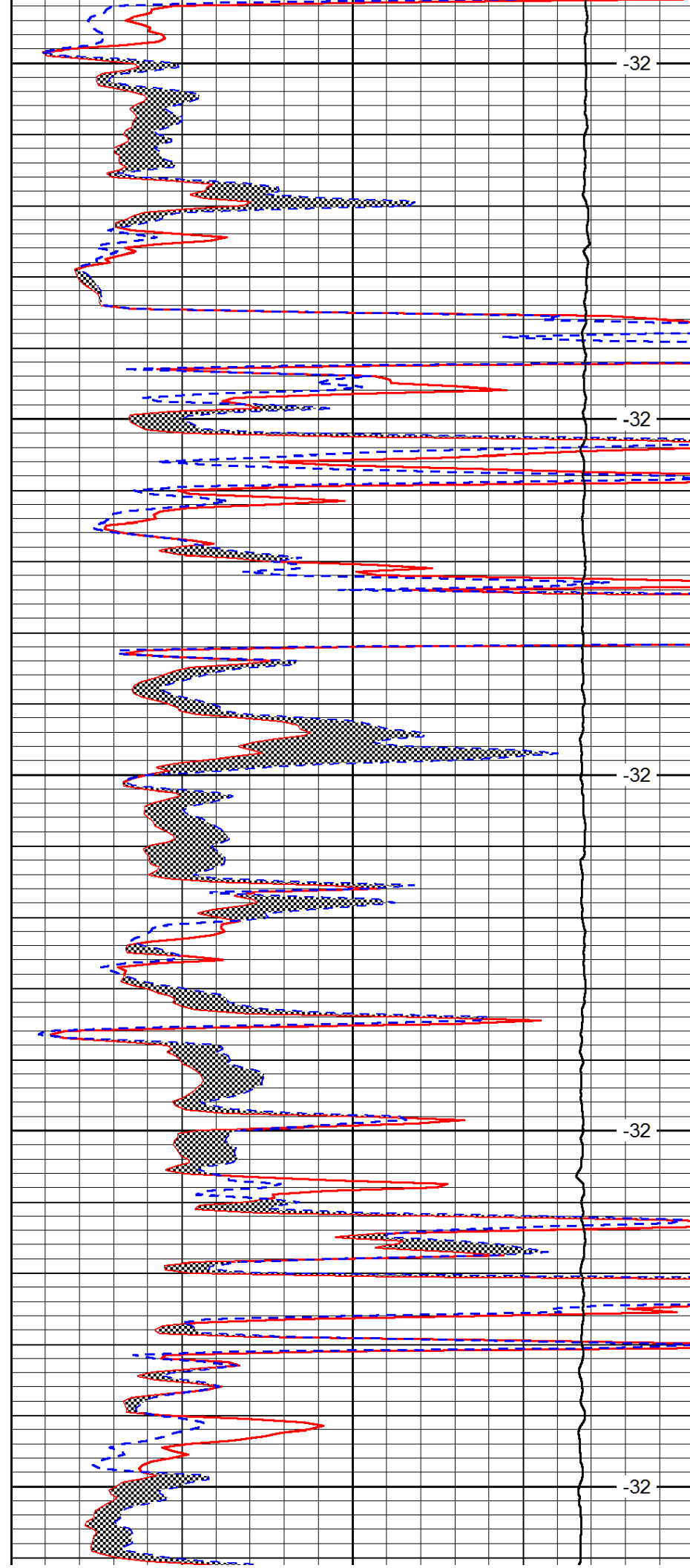
3300

3350

3400

3450

3500



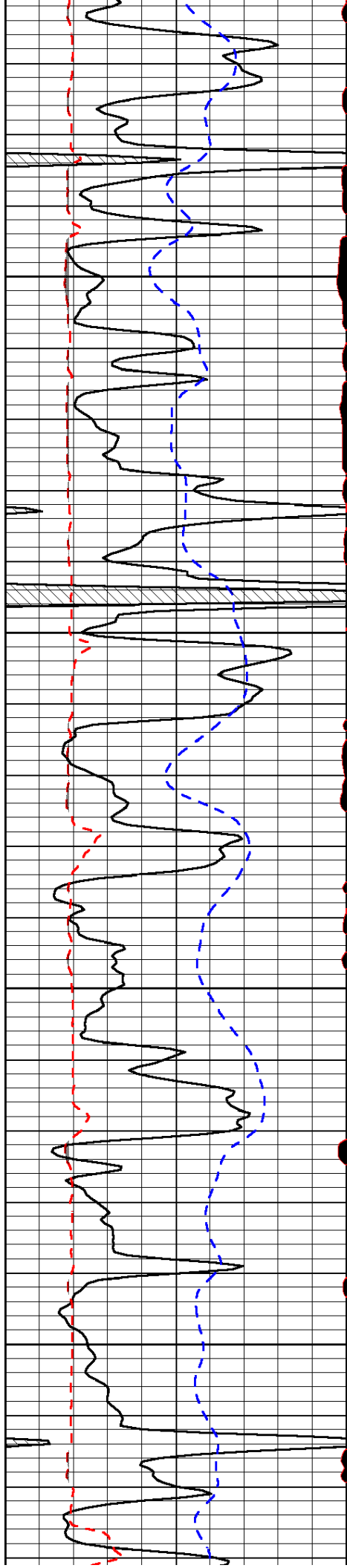
-32

-32

-32

-32

-32

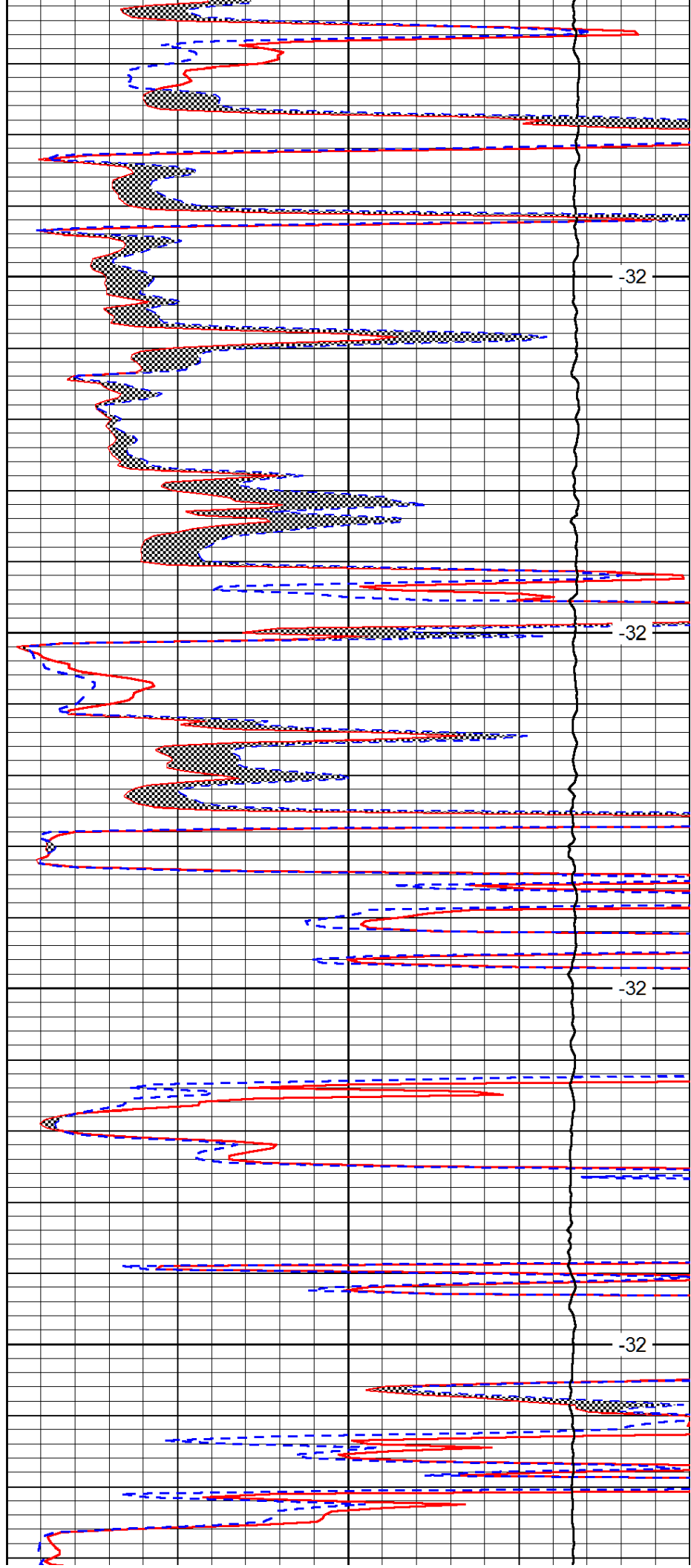


3550

3600

3650

3700

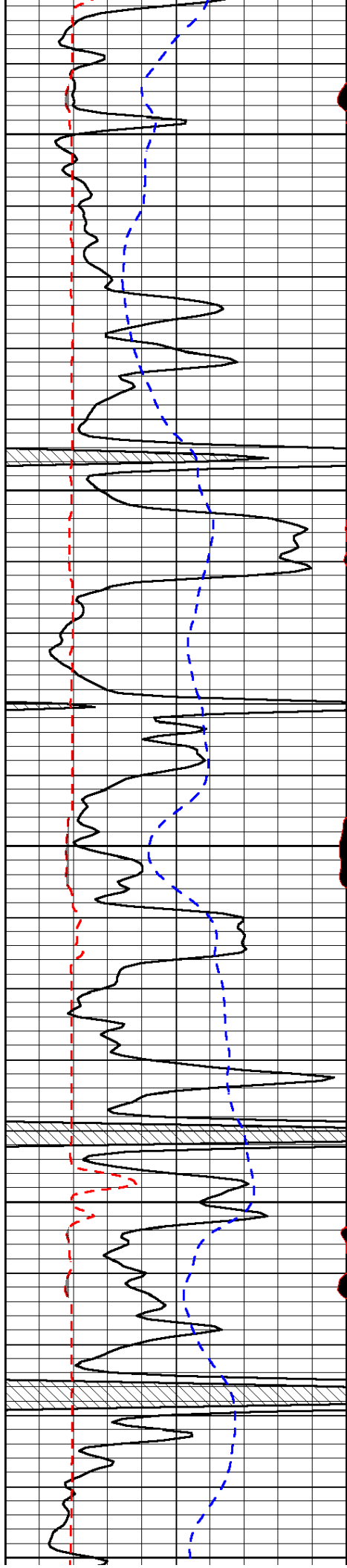


-32

-32

-32

-32



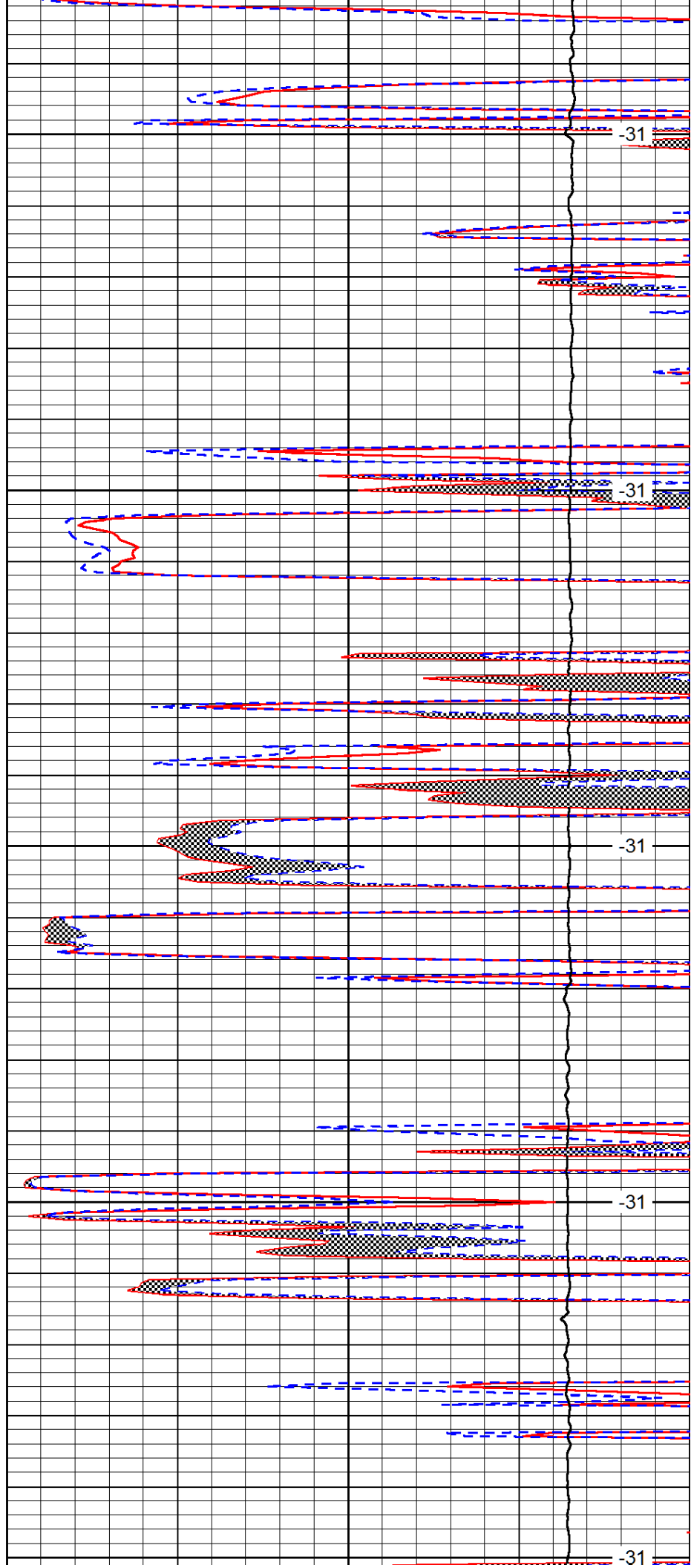
3750

3800

3850

3900

3950



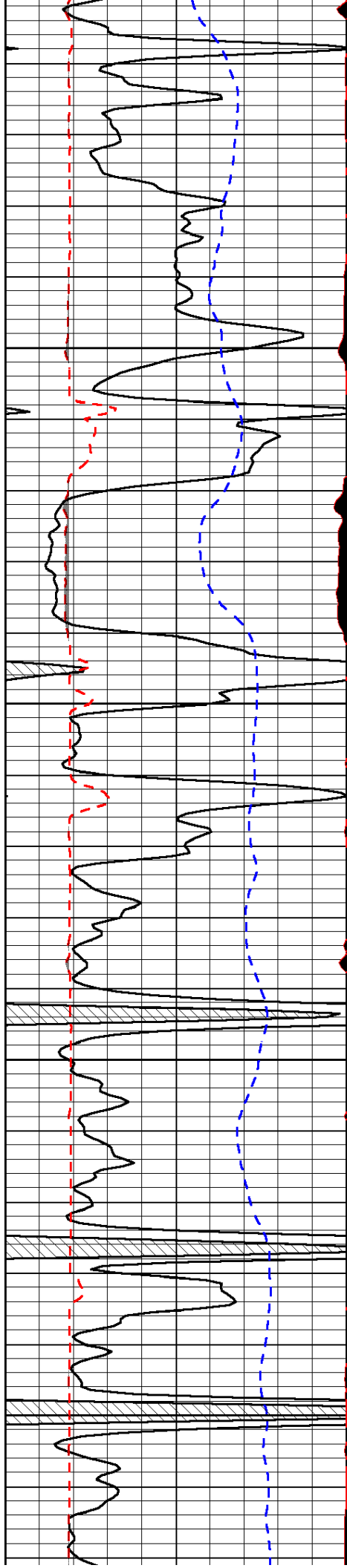
-31

-31

-31

-31

-31

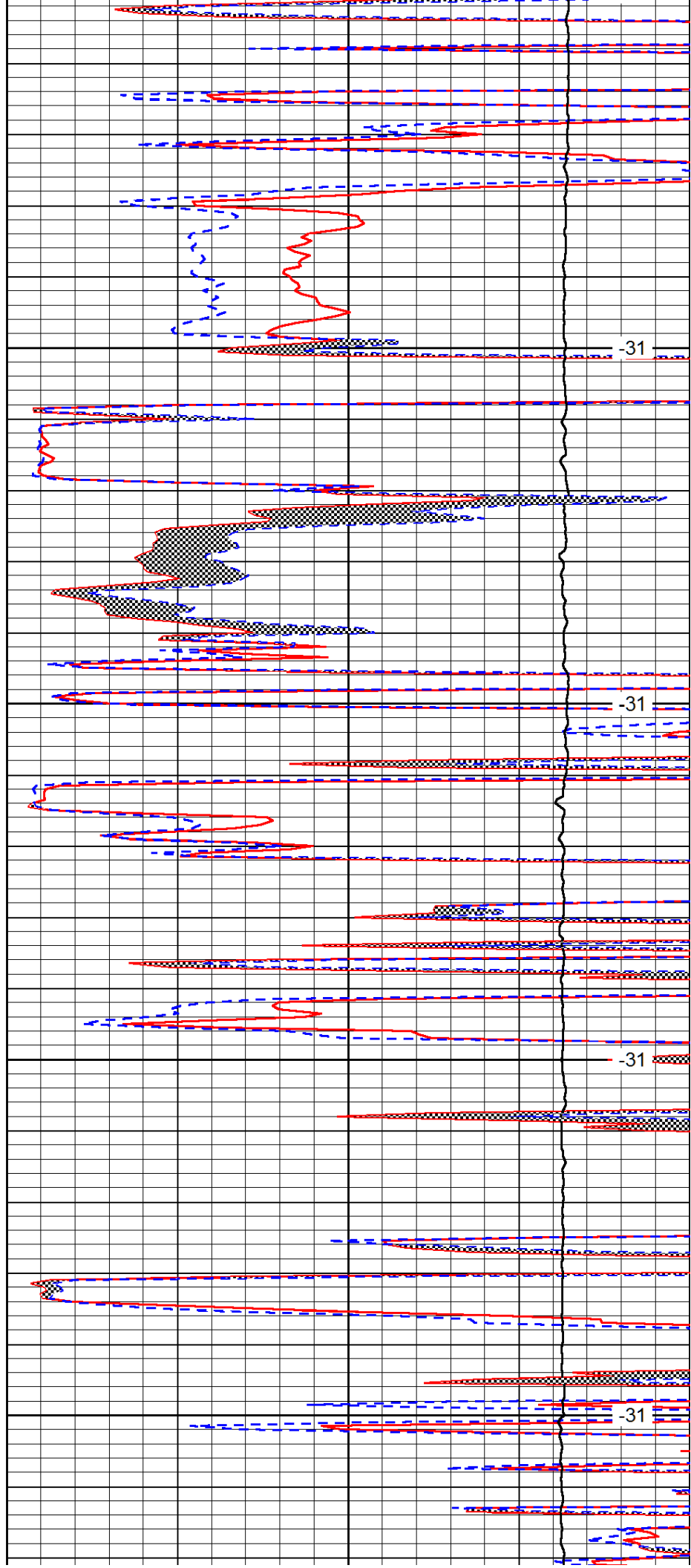


4000

4050

4100

4150

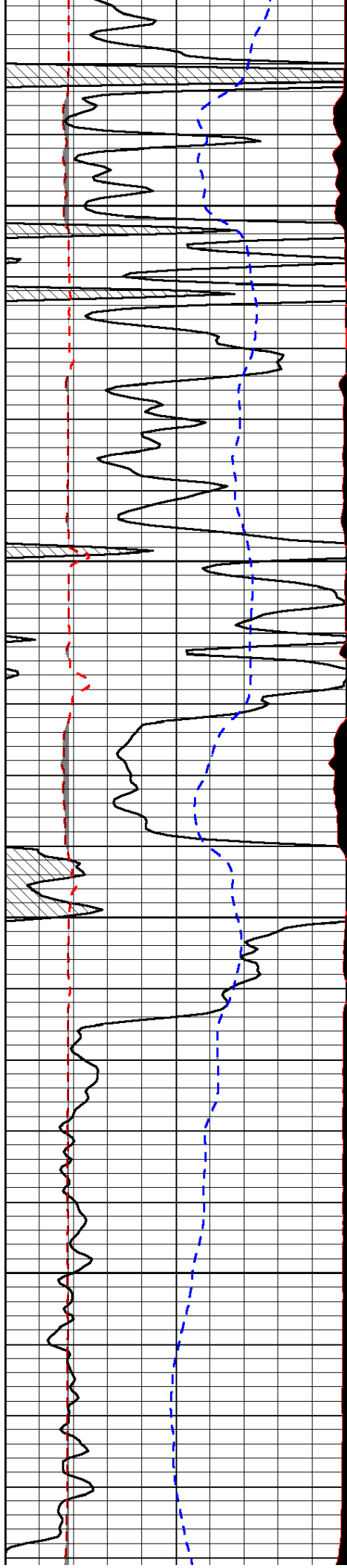


-31

-31

-31

-31

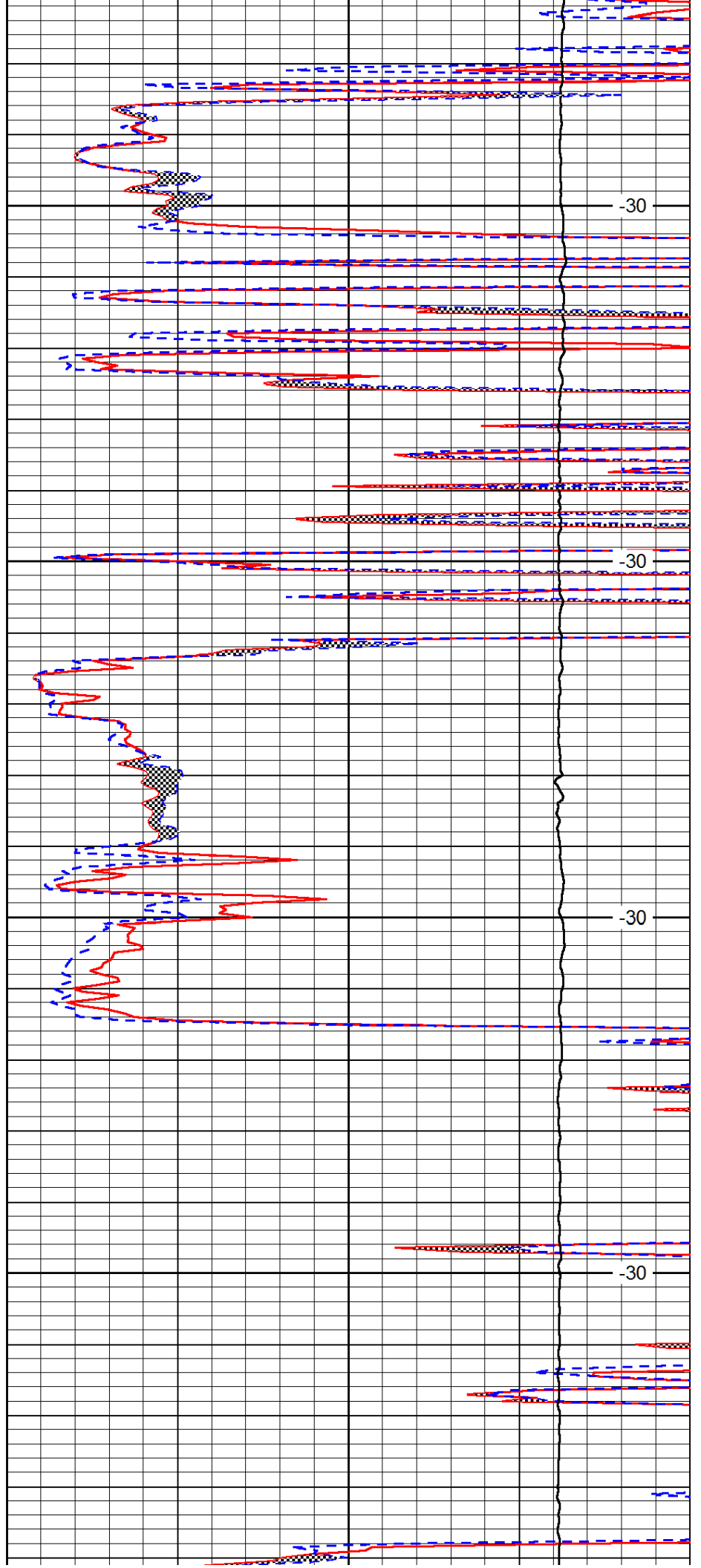


4200

4250

4300

4350

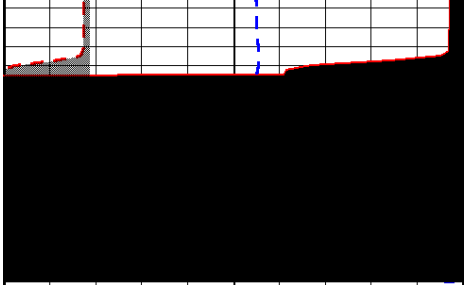


-30

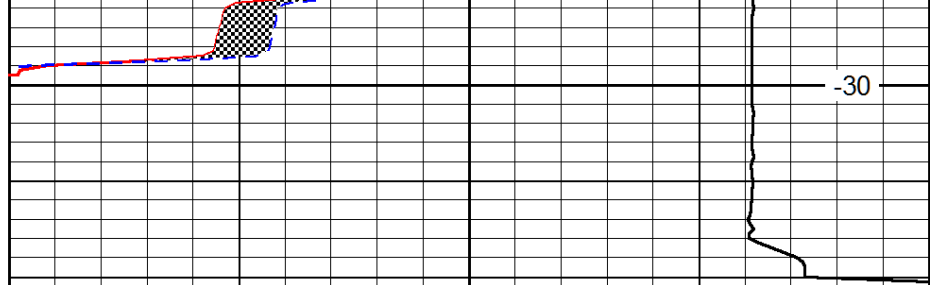
-30

-30

-30



4400



-30

0	Gamma Ray	150
6	MCAL (GAPI)	16
2.875	Mud Cake (GAPI)	7.875
-200	SP (mV)	0

0	Micro Inverse 1 X 1	40
0	Micro Normal 2"	40
10000	Line Weight	0

LSPD