



Pioneer Energy Services

Dual Induction Log

API No.	15-109-21270-00-00	
Company	Black Tea Oil, LLC	
Well	Krebs P #2	
Field	N/A	
County	Logan	State
		Kansas
Location	2245' FSL & 590' FEL	
Sec: 29	Twp: 14 S	Rge: 32 W
Permanent Datum	Ground Level	Elevation 2652
Log Measured From	Kelly Bushing	9 Ft. Above Perm. Datum
Drilling Measured From	Kelly Bushing	
		Other Services CNL/CDL MEL/BHCS
		Elevation K.B. 2661 D.F. G.L. 2652

Date	05-08-2014
Run Number	One
Depth Driller	4410
Depth Logger	4416
Bottom Logged Interval	4415
Top Log Interval	250
Casing Driller	13.375 @ 265
Casing Logger	262
Bit Size	7.875
Type Fluid in Hole	Chemical
Salinity, ppm CL	6000
Density / Viscosity	8.9 51
pH / Fluid Loss	9.5 8.8
Source of Sample	Flowline
Rm @ Meas. Temp	0.48 @ 75
Rmf @ Meas. Temp	0.36 @ 75
Rmc @ Meas. Temp	0.65 @ 75
Source of Rmf / Rmc	Charts
Rm @ BHT	0.30 @ 120
Operating Rig Time	5 Hours
Max Rec. Temp. F	120
Equipment Number	17
Location	Hays
Recorded By	Y. Ruiz
Witnessed By	Kevin Bailey

<<< Fold Here >>>

All interpretations are opinions based on inferences from electrical or other measurements and we cannot and do not guarantee the accuracy or correctness of any interpretation, and we shall not, except in the case of gross or willful negligence on our part, be liable or responsible for any loss, costs, damages, or expenses incurred or sustained by anyone resulting from any interpretation made by any of our officers, agents or employees. These interpretations are also subject to our general terms and conditions set out in our current Price Schedule.

Comments

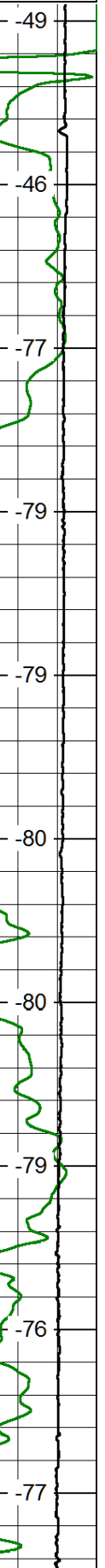
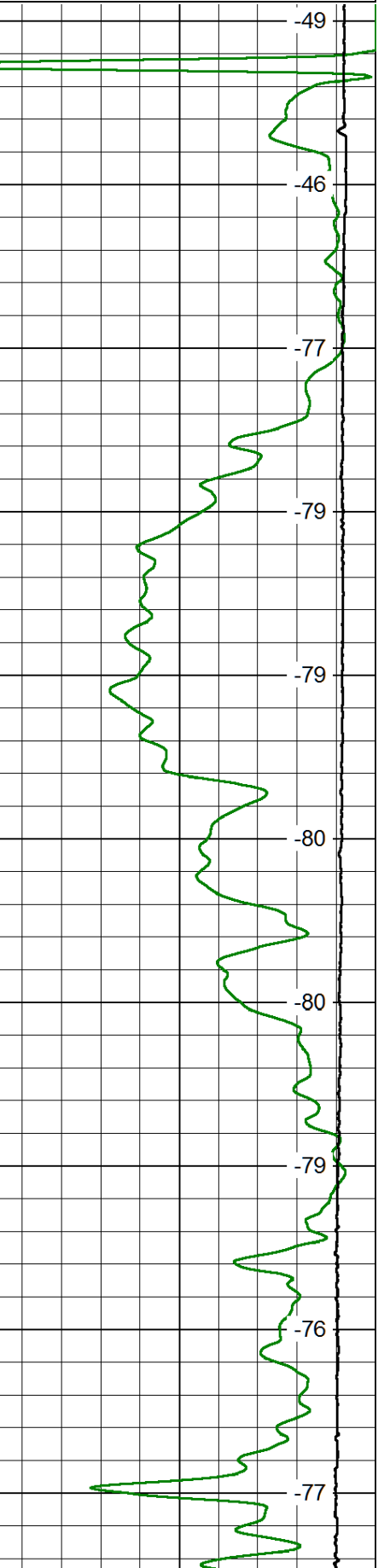
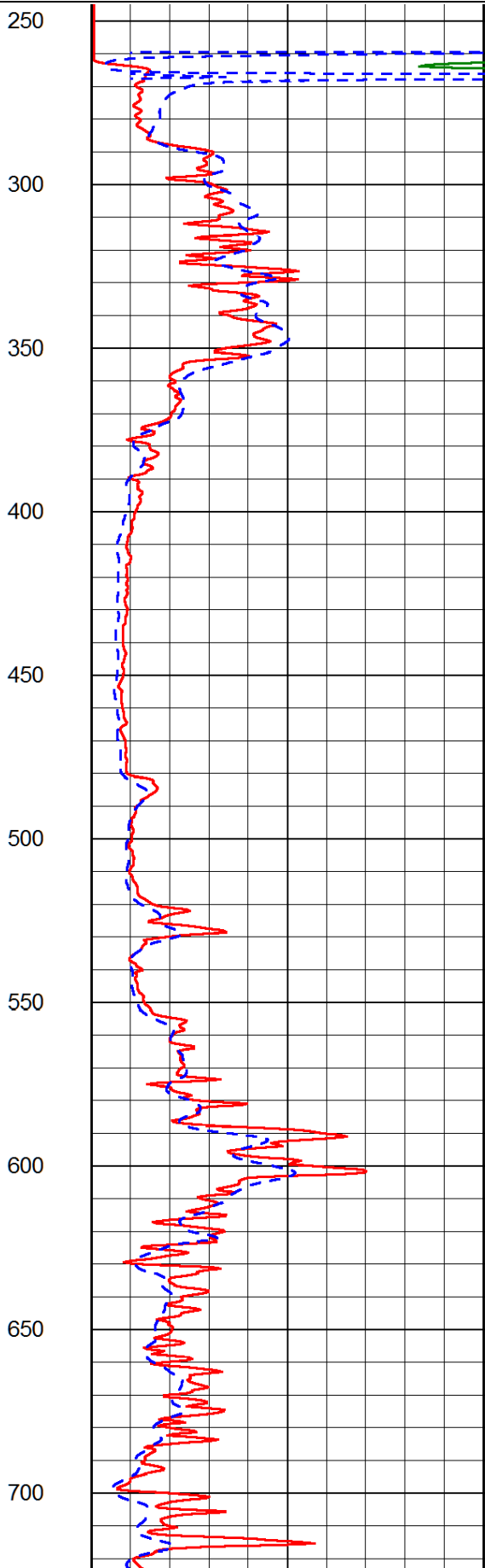
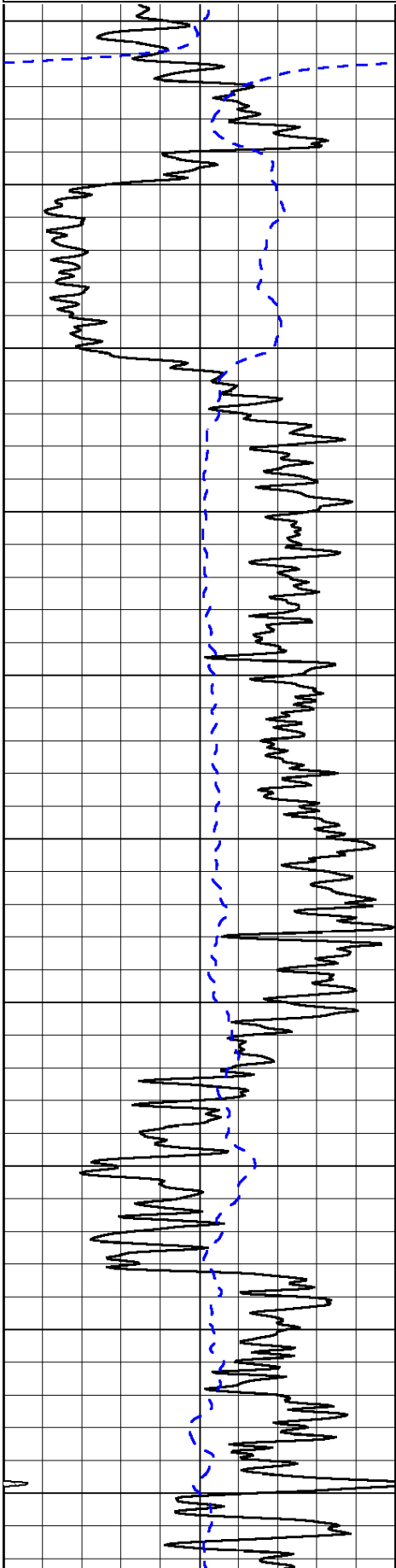
Thank you for using Log-Tech, Inc.
 (785) 625-3858
 Oakley,
 South to JayHawk Rd, 1 South,
 West into at Gates (About 3 Miles West)

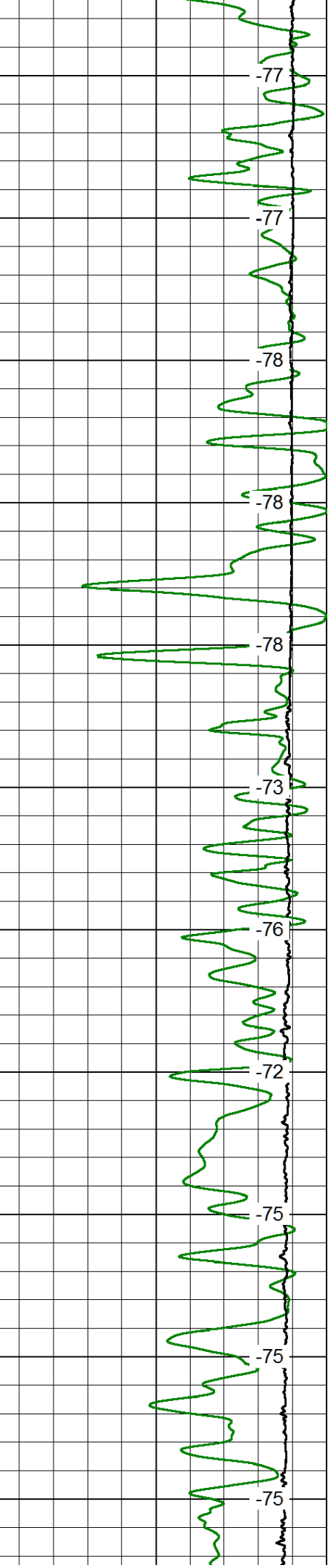
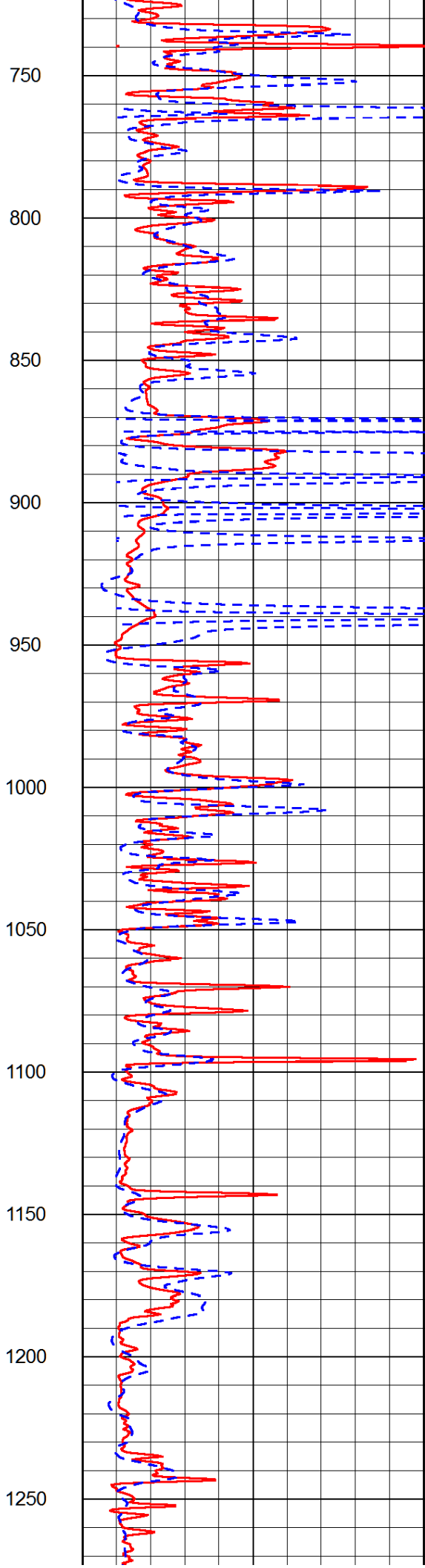
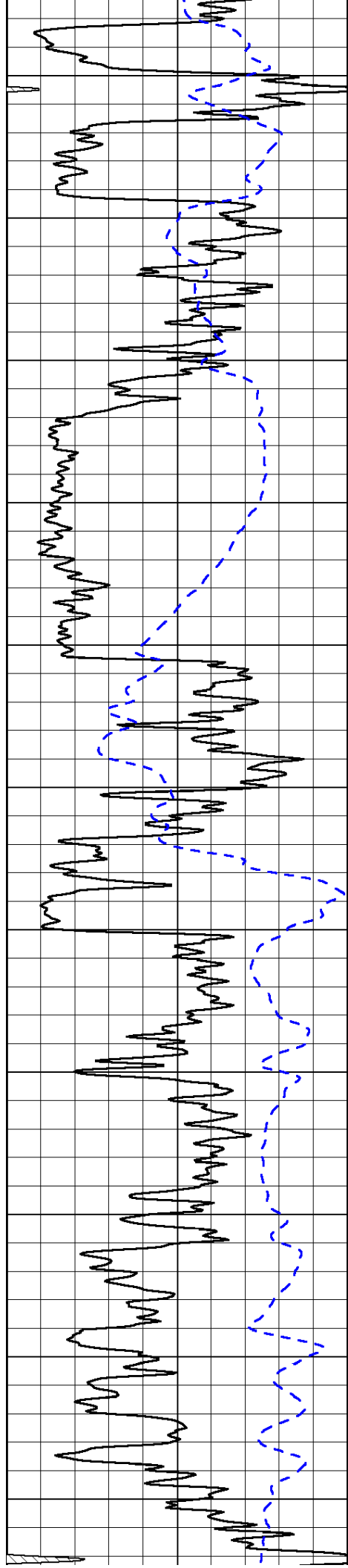
Database File: black_tea_050814hd.db
 Dataset Pathname: DIL/btstk
 Presentation Format: dil2in
 Dataset Creation: Thu May 08 20:36:40 2014
 Charted by: Depth in Feet scaled 1:600

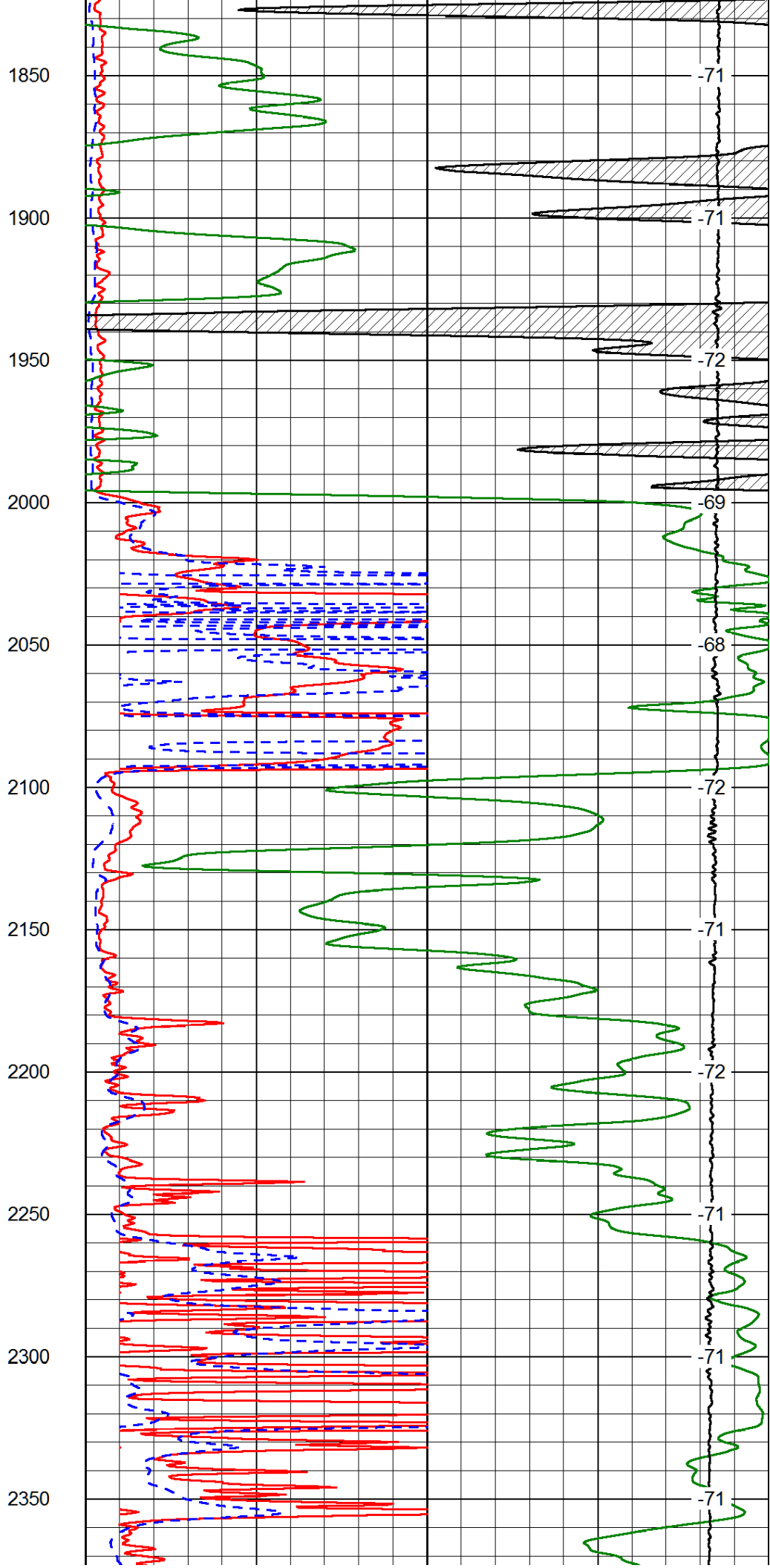
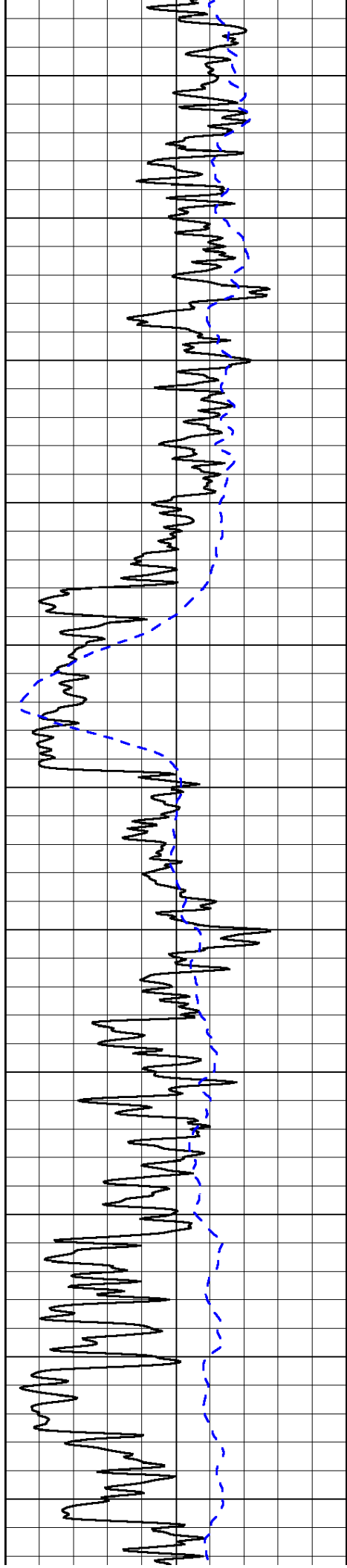
0 Gamma Ray 150
-200 SP (mV) 0

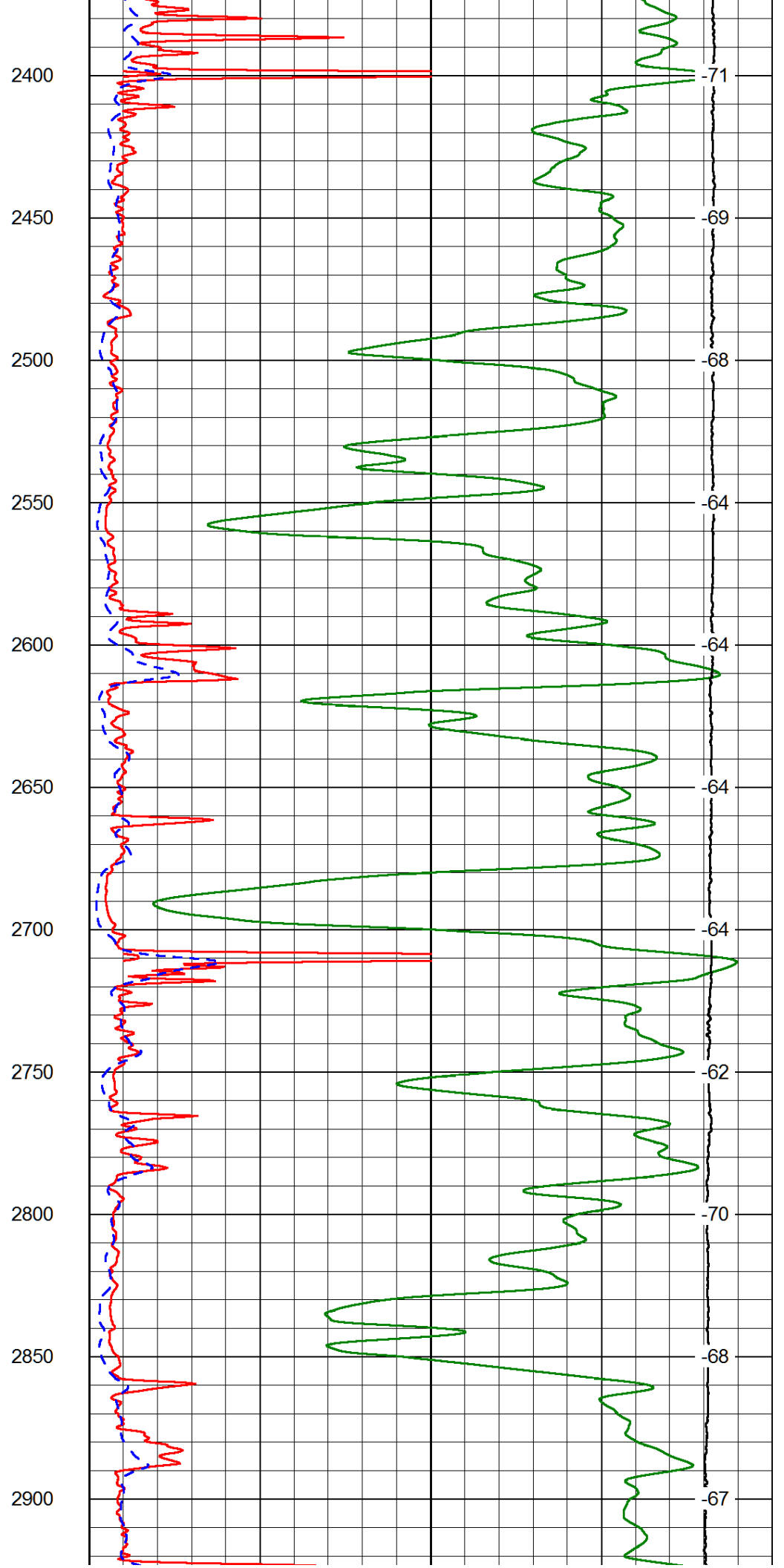
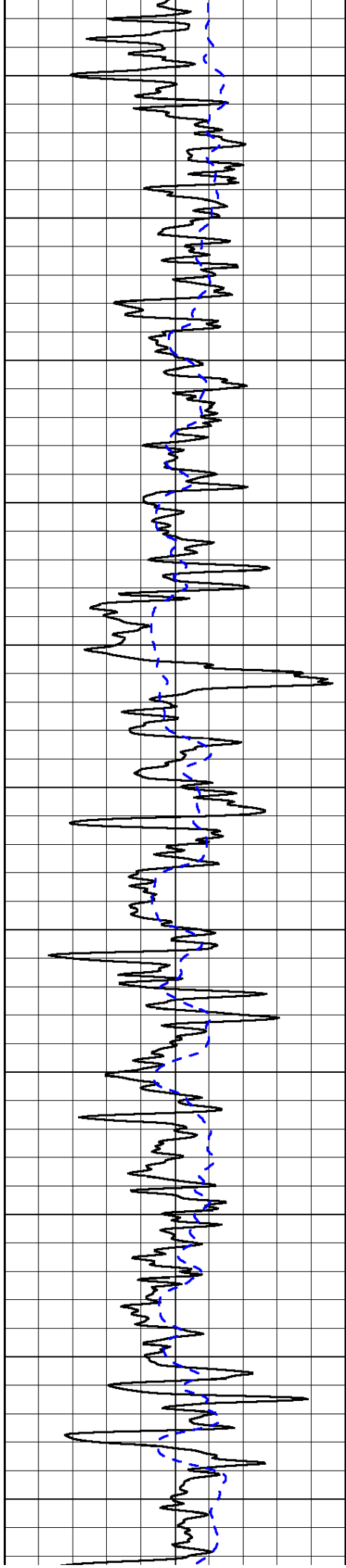
0 Shallow Resistivity 50
0 Deep Resistivity 50
1000 Conductivity 0
15000 Line Tension 0
50 Shallow Resistivity 500
50 Deep Resistivity 500

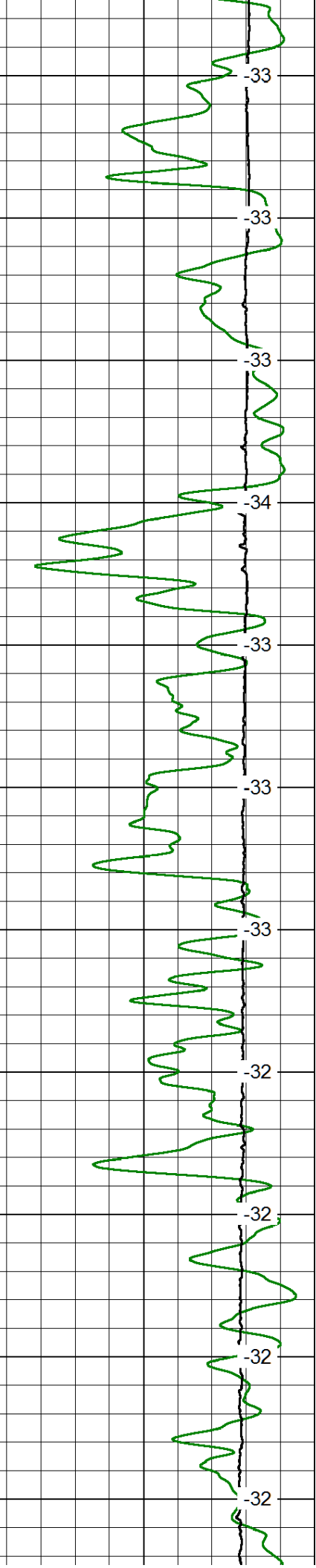
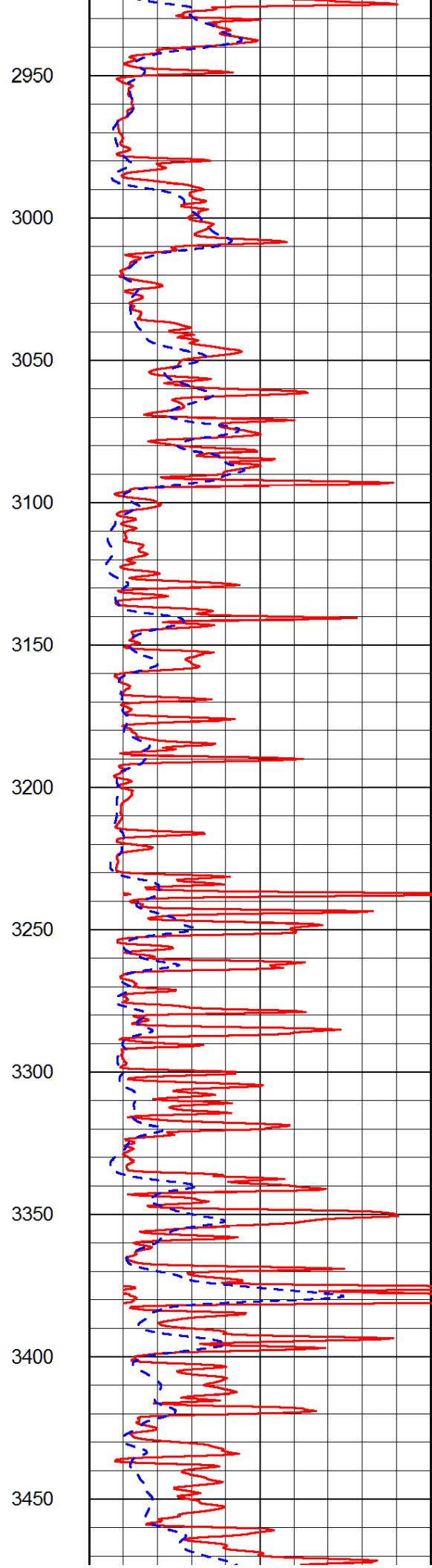
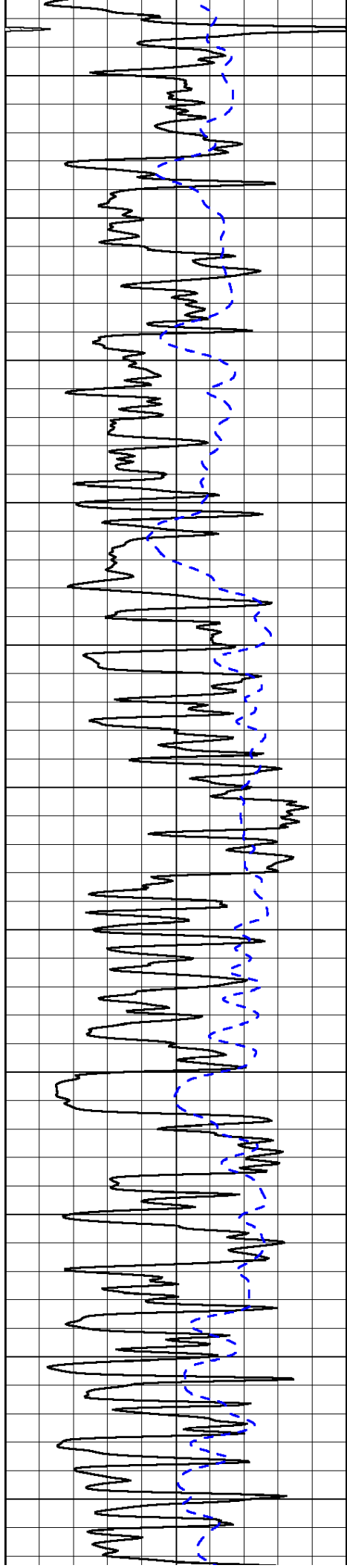
LSPD

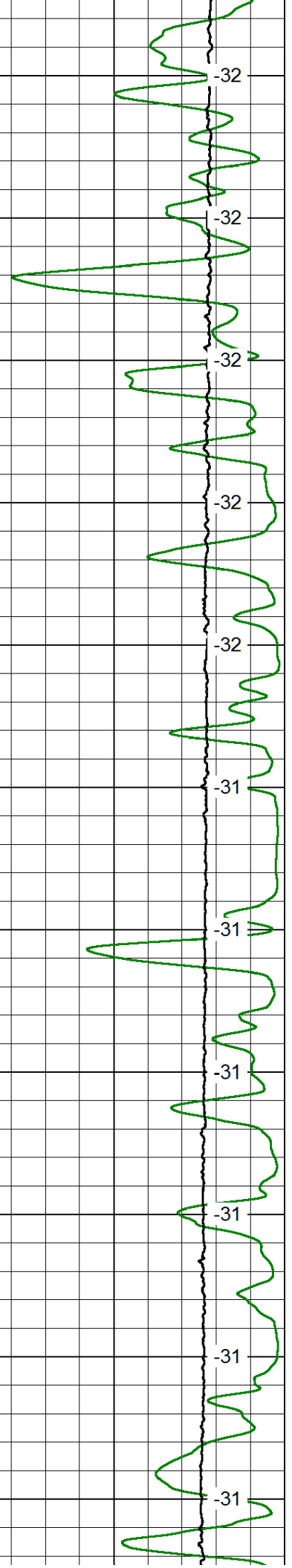
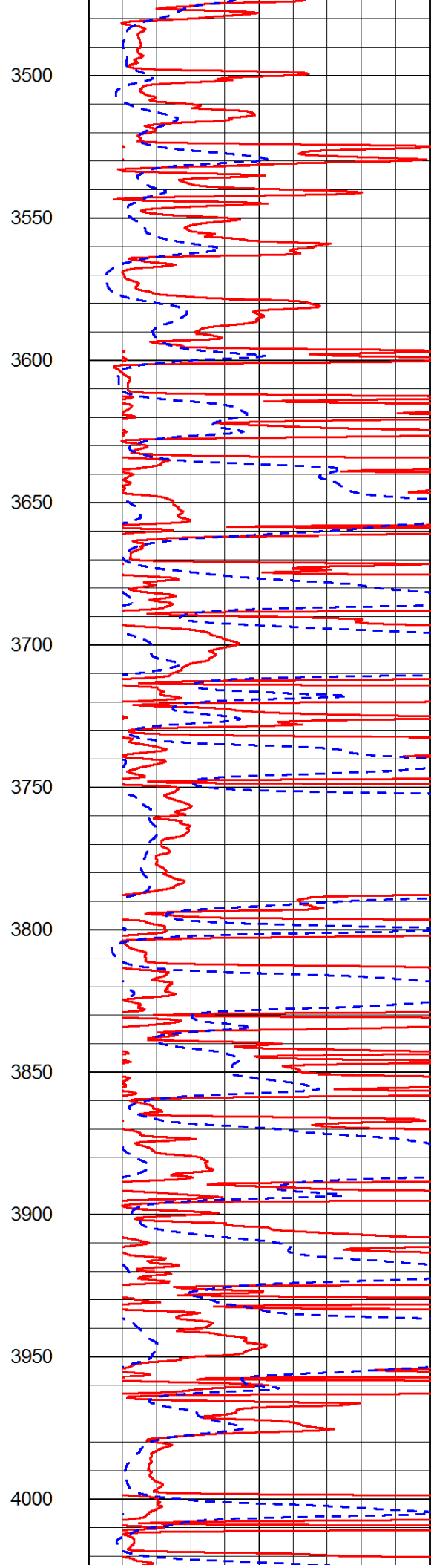
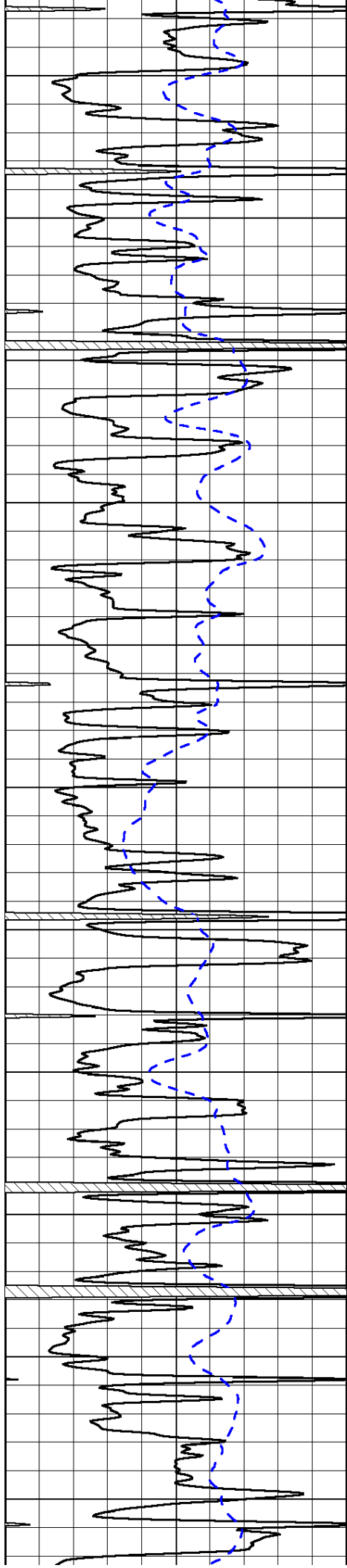


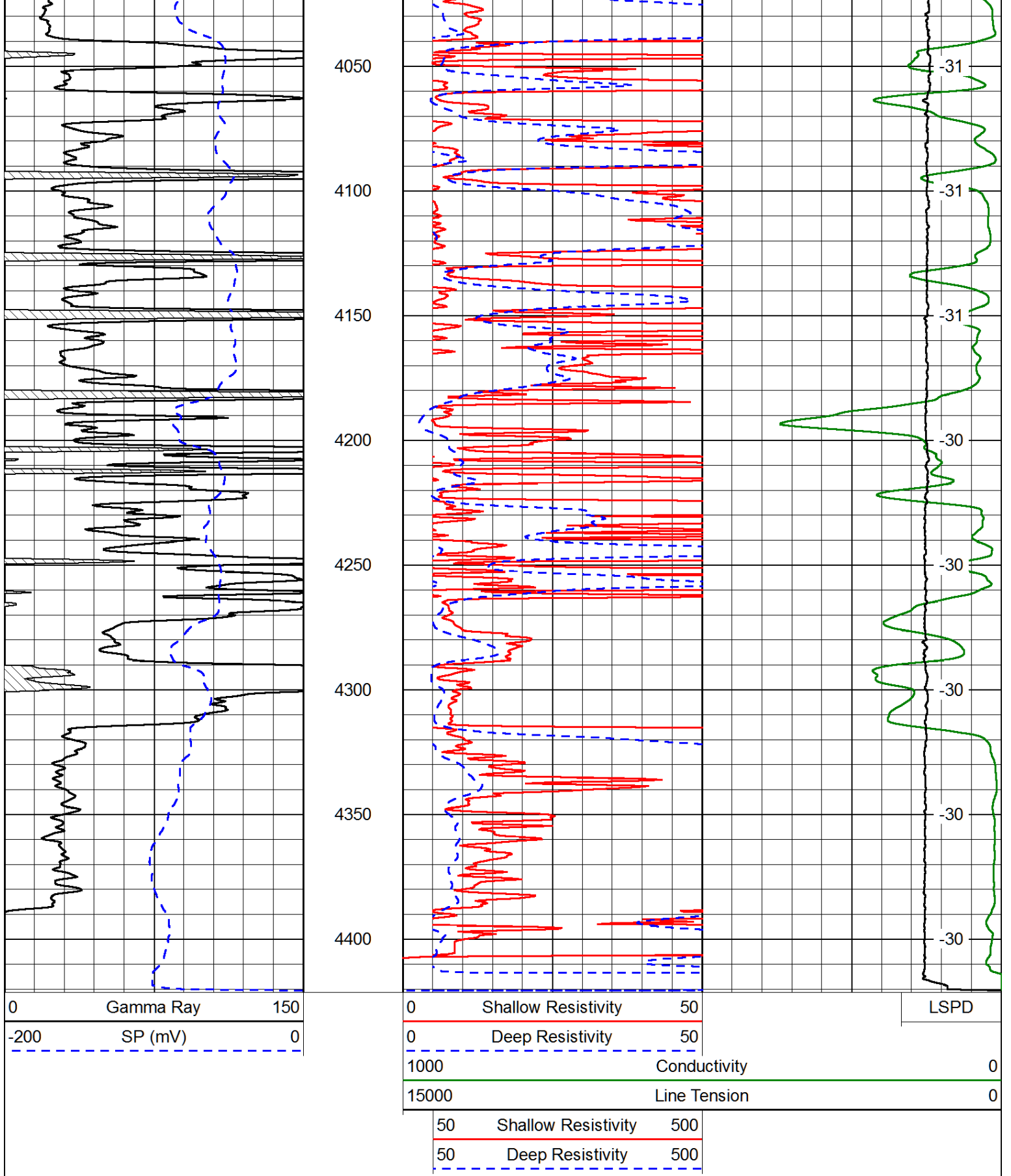




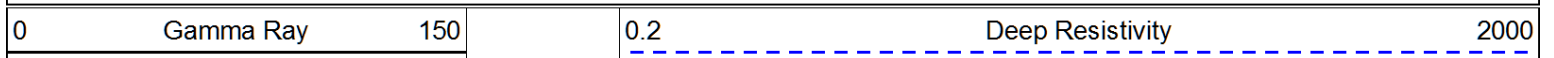








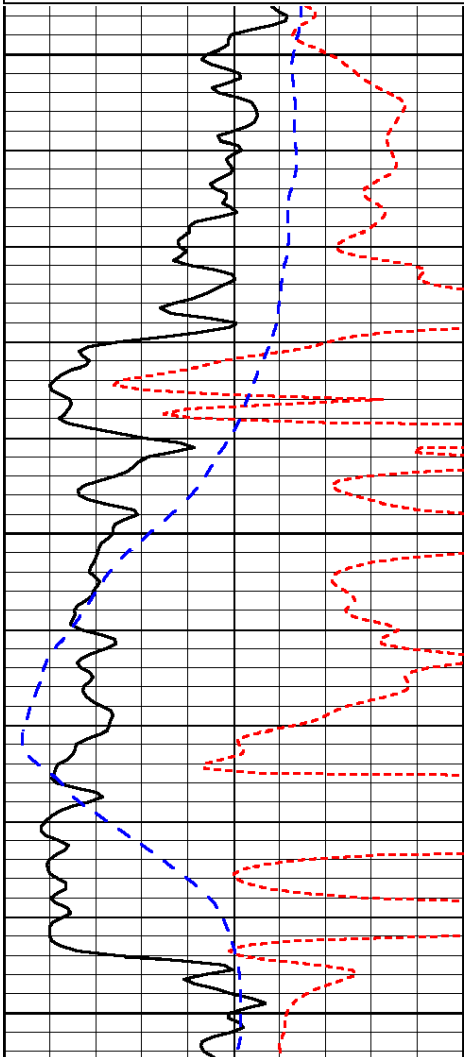
Database File: black_tea_050814hd.db
 Dataset Pathname: DIL/btstk
 Presentation Format: dil
 Dataset Creation: Thu May 08 20:36:40 2014
 Charted by: Depth in Feet scaled 1:240



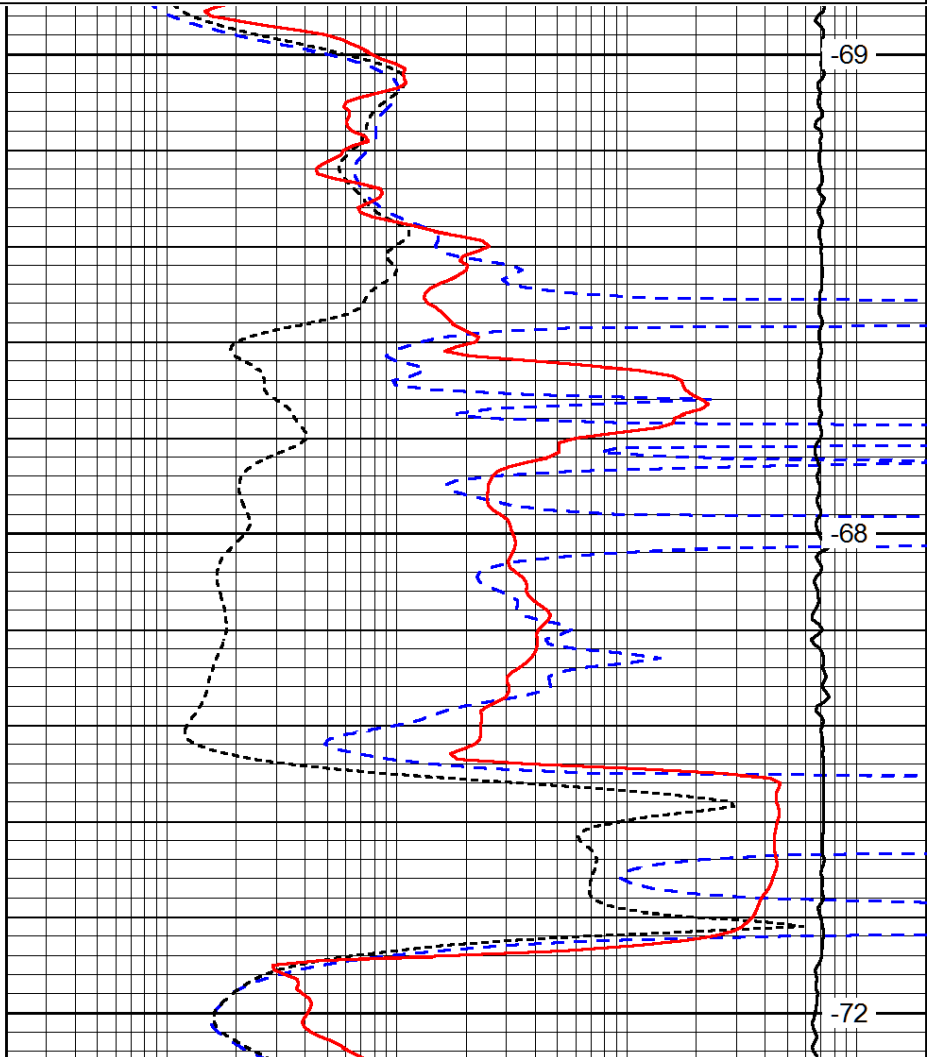
-160	RXO/RT	40
-200	SP (mV)	0

0.2	Medium Resistivity	2000
0.2	Shallow Resistivity	2000
10000	Line Tension	0

LSPD



2000
2050
2100



-69
-68
-72

0	Gamma Ray	150
-160	RXO/RT	40
-200	SP (mV)	0

0.2	Deep Resistivity	2000
0.2	Medium Resistivity	2000
0.2	Shallow Resistivity	2000
10000	Line Tension	0

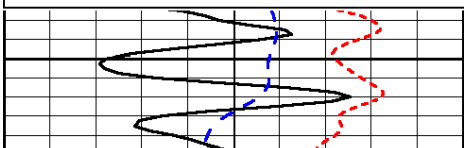
LSPD

Database File: black_tea_050814hd.db
 Dataset Pathname: DIL/btstk
 Presentation Format: dil
 Dataset Creation: Thu May 08 20:36:40 2014
 Charted by: Depth in Feet scaled 1:240

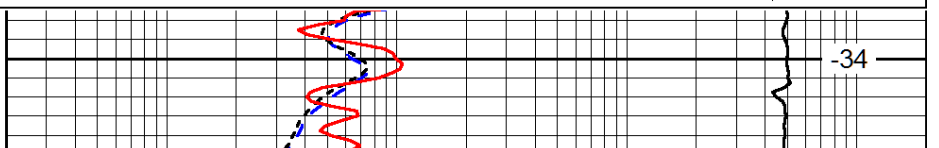
0	Gamma Ray	150
-160	RXO/RT	40
-200	SP (mV)	0

0.2	Deep Resistivity	2000
0.2	Medium Resistivity	2000
0.2	Shallow Resistivity	2000
10000	Line Tension	0

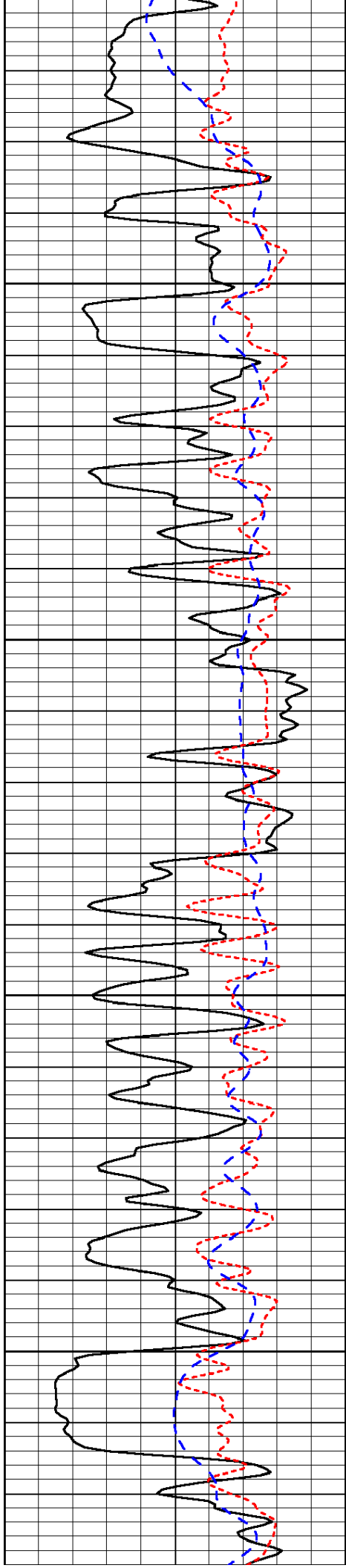
LSPD



3100



-34

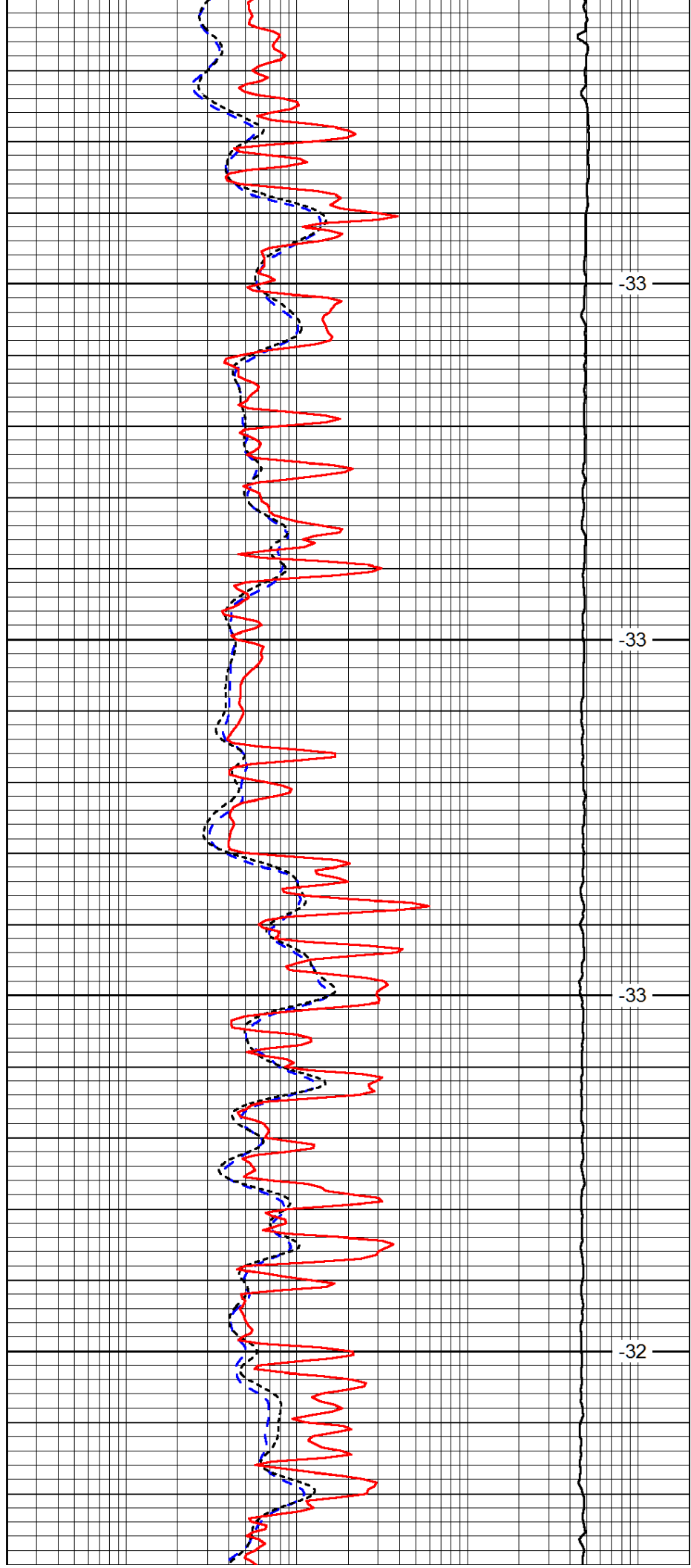


3150

3200

3250

3300

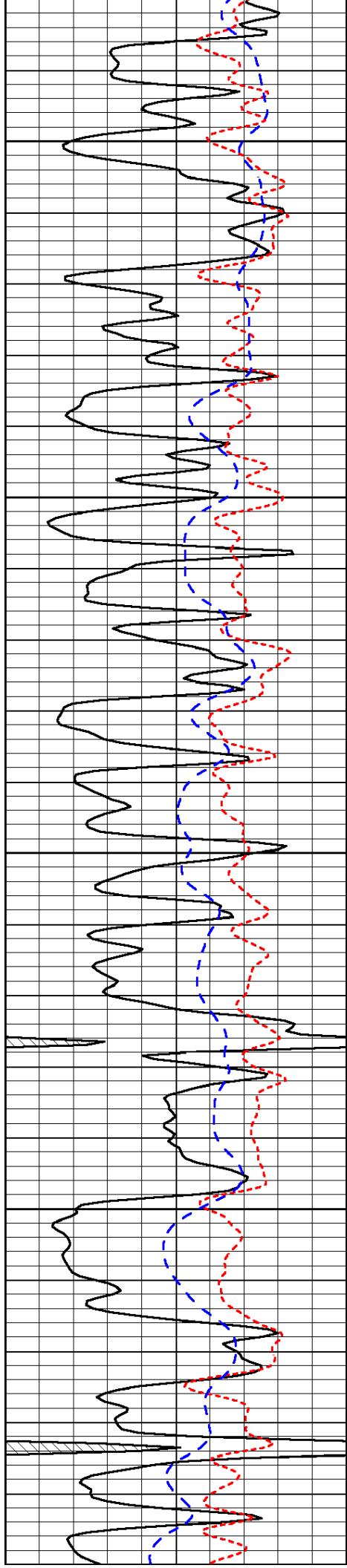


-33

-33

-33

-32



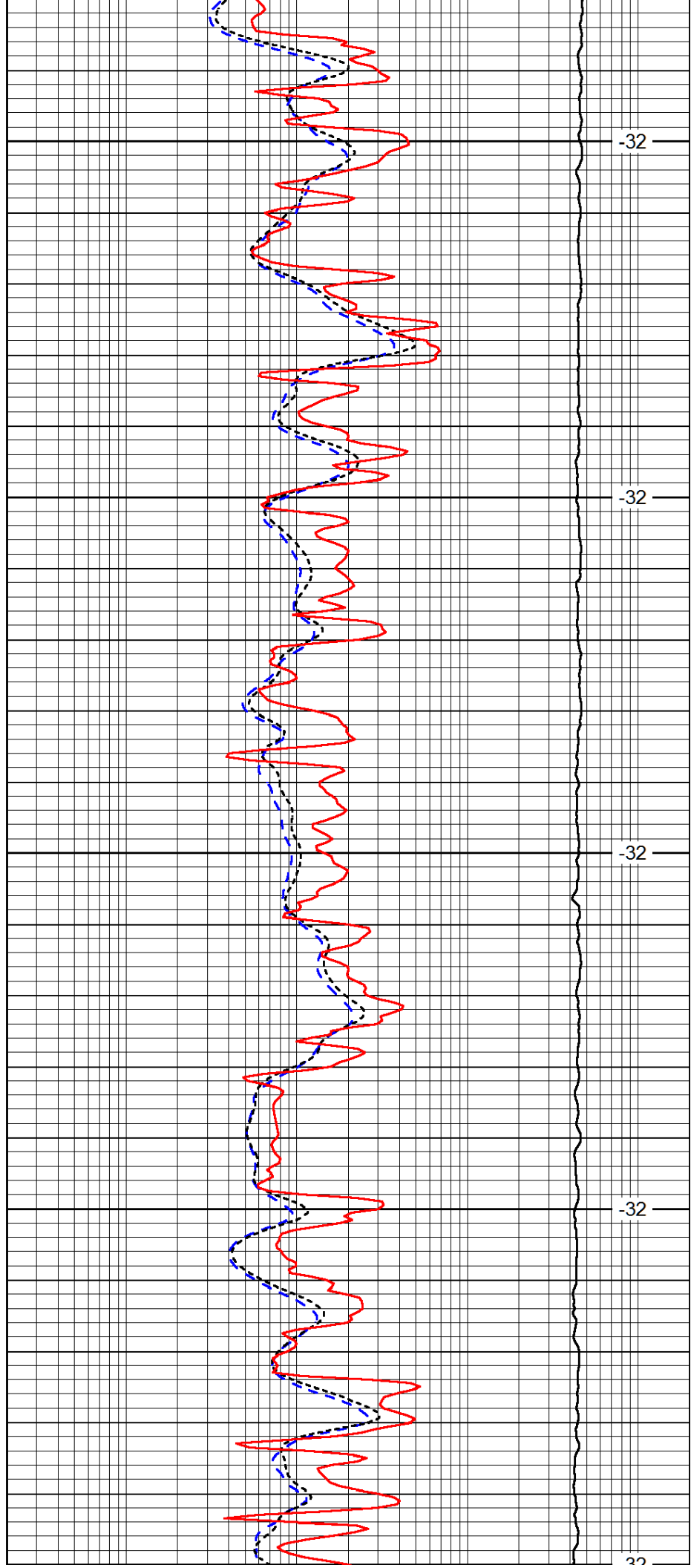
3350

3400

3450

3500

3550



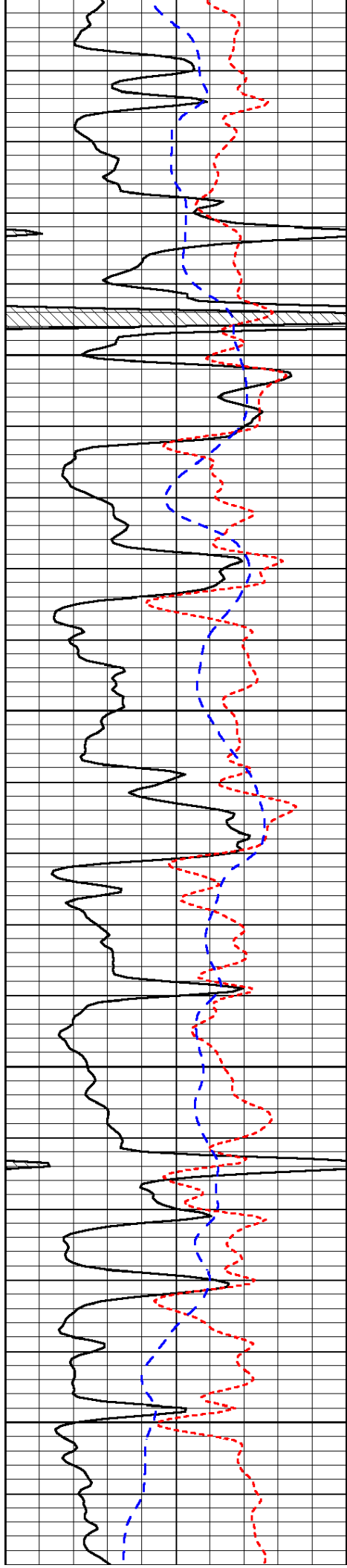
-32

-32

-32

-32

-32



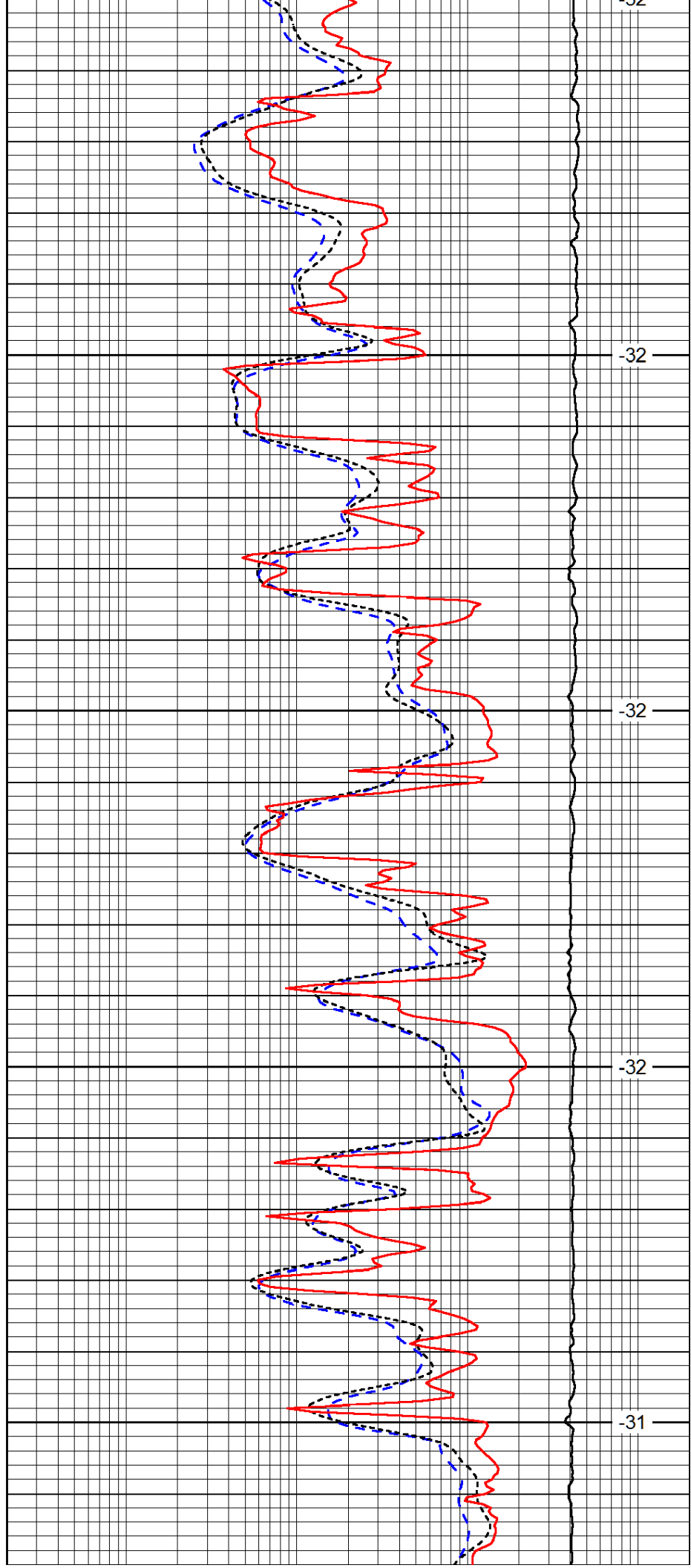
3550

3600

3650

3700

3750



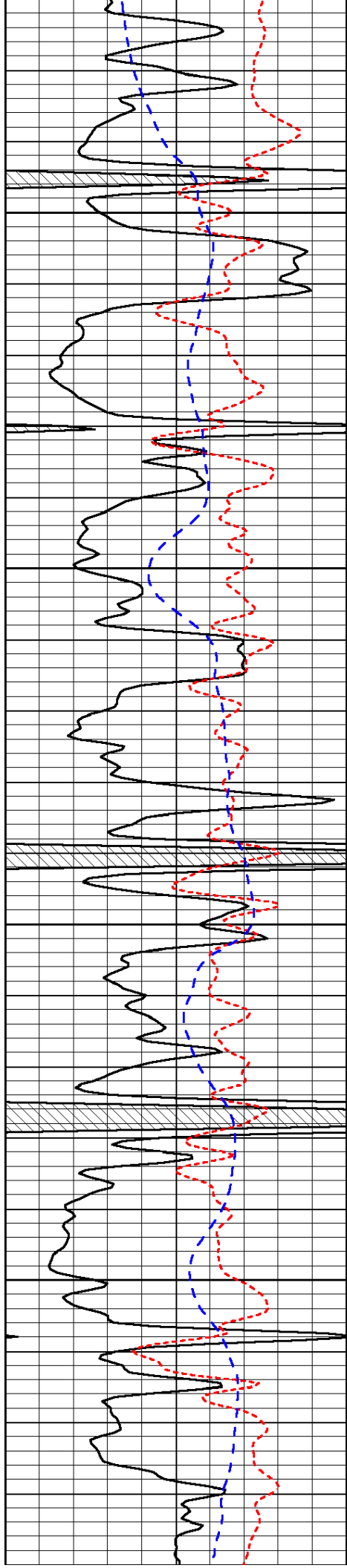
-32

-32

-32

-32

-31

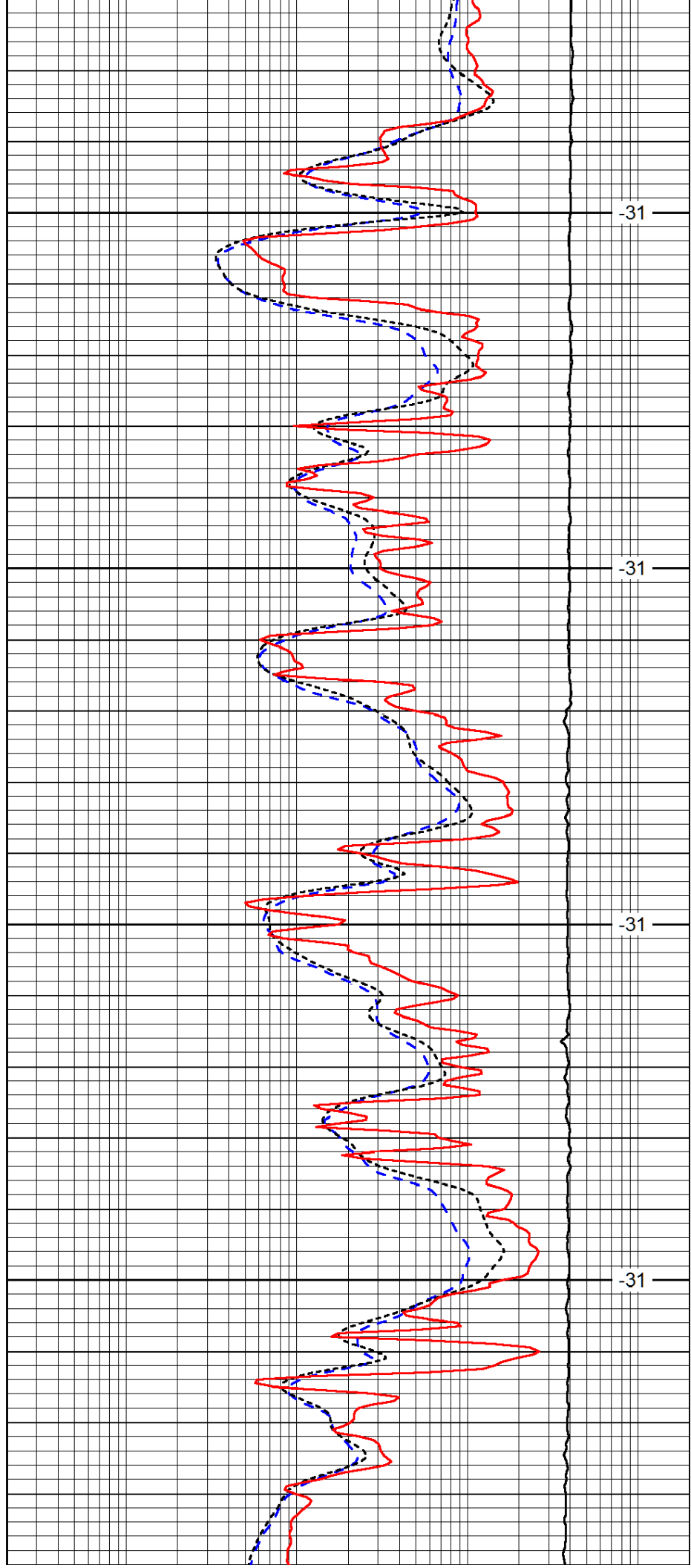


3800

3850

3900

3950

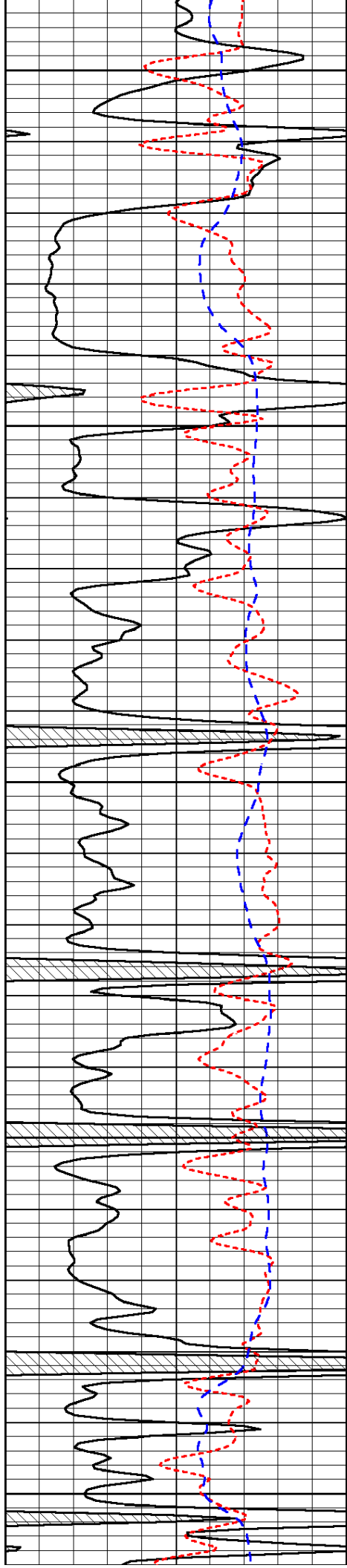


-31

-31

-31

-31



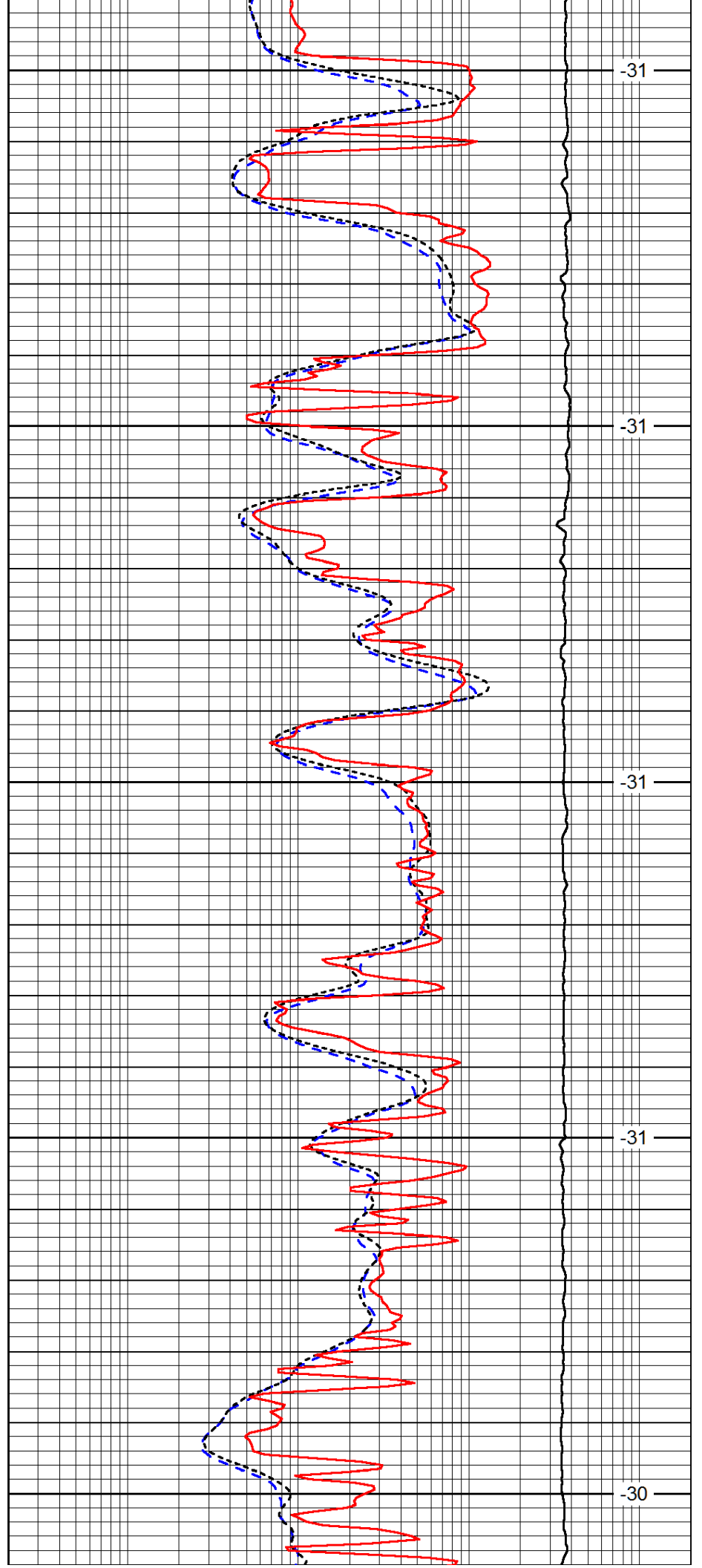
4000

4050

4100

4150

4200



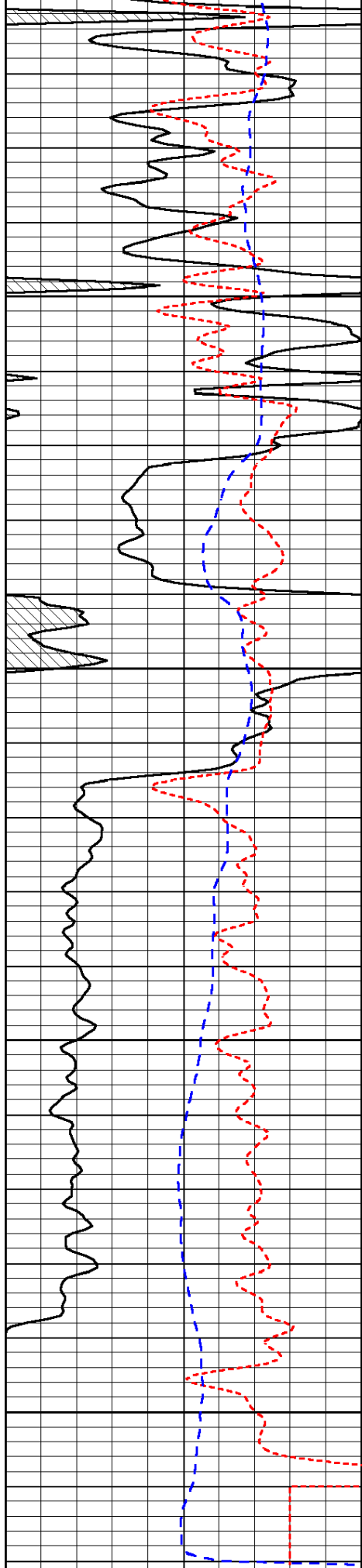
-31

-31

-31

-31

-30



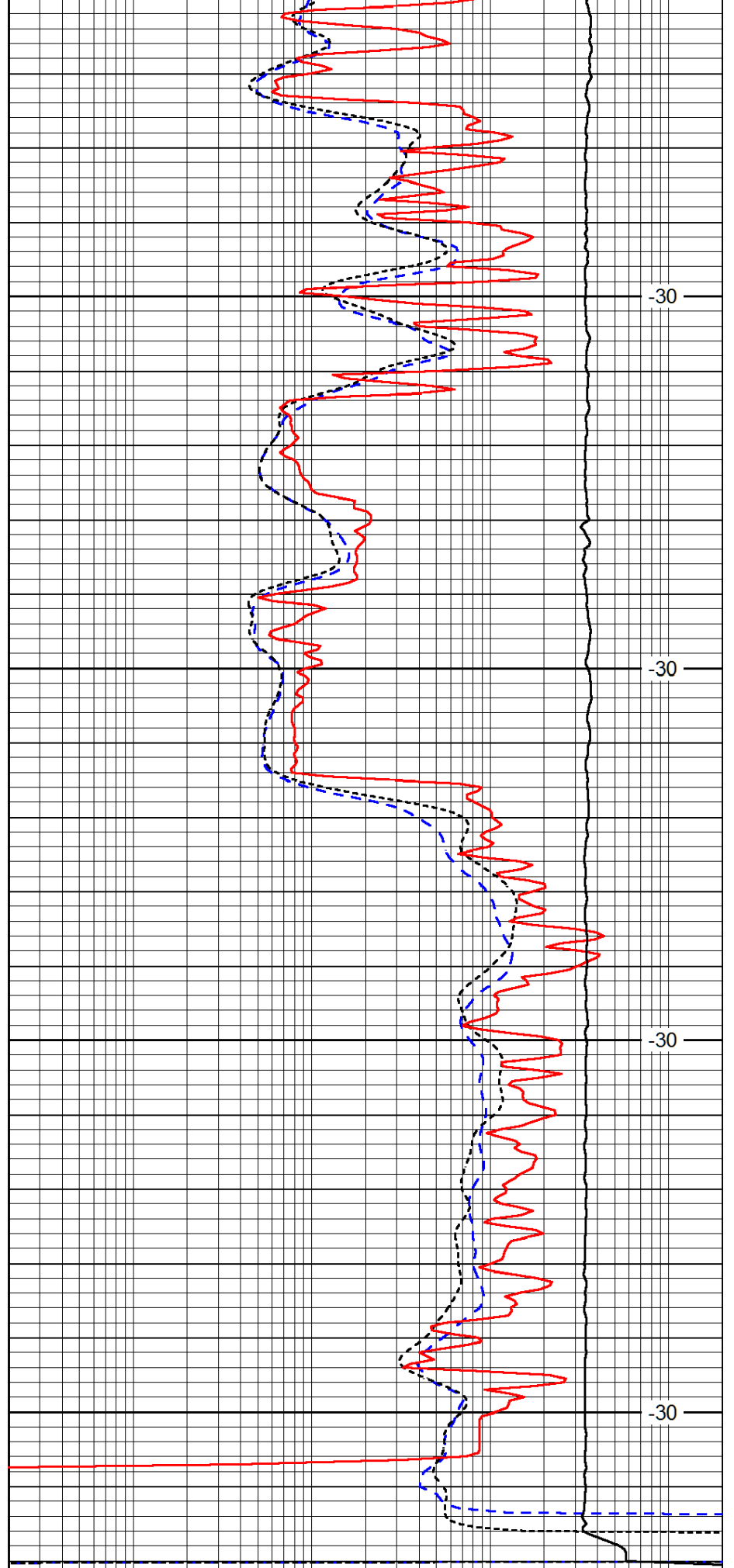
4250

4300

4350

4400

0 Gamma Ray 150
-160 RXO/RT 40



-30

-30

-30

-30

0.2 Deep Resistivity 2000
0.2 Medium Resistivity 2000

-200	SP (mV)	0
------	---------	---

0.2	Shallow Resistivity	2000
-----	---------------------	------

10000	Line Tension	0
-------	--------------	---

LSPD
