



Pioneer Energy Services

# Borehole Compensated Sonic Log

API No.	15-109-21270-00-00	
Company	Black Tea Oil, LLC	
Well	Krebs P #2	
Field	N/A	
County	Logan	State Kansas
Location	2245' FSL & 590' FEL	
Sec: 29	Twp: 14 S	Rge: 32 W
Permanent Datum	Ground Level	Elevation 2652
Log Measured From	Kelly Bushing	9 Ft. Above Perm. Datum
Drilling Measured From	Kelly Bushing	
		Other Services CNL/CDL MEL/DIL
		Elevation K.B. 2661 D.F. G.L. 2652

Date	05-08-2014	
Run Number	Two	
Type Log	BHC Sonic	
Depth Driller	4410	
Depth Logger	4416	
Bottom Logged Interval	4405	
Top Logged Interval	250	
Type Fluid In Hole	Chemical	
Salinity, PPM CL	6000	
Density	8.9	
Level	Full	
Max. Rec. Temp. F	120	
Operating Rig Time	5 Hours	
Equipment -- Location	17	Hays
Recorded By	Y. Ruiz	
Witnessed By	Kevin Bailey	

Borehole Record			Casing Record				
Run No	Bit	From	To	Size	Wgt.	From	To
One	12.25	00	265	8.625	23#	00	265
Two	7.875	265					

<<< Fold Here >>>

All interpretations are opinions based on inferences from electrical or other measurements and we cannot and do not guarantee the accuracy or correctness of any interpretation, and we shall not, except in the case of gross or willful negligence on our part, be liable or responsible for any loss, costs, damages, or expenses incurred or sustained by anyone resulting from any interpretation made by any of our officers, agents or employees. These interpretations are also subject to our general terms and conditions set out in our current Price Schedule.

### Comments

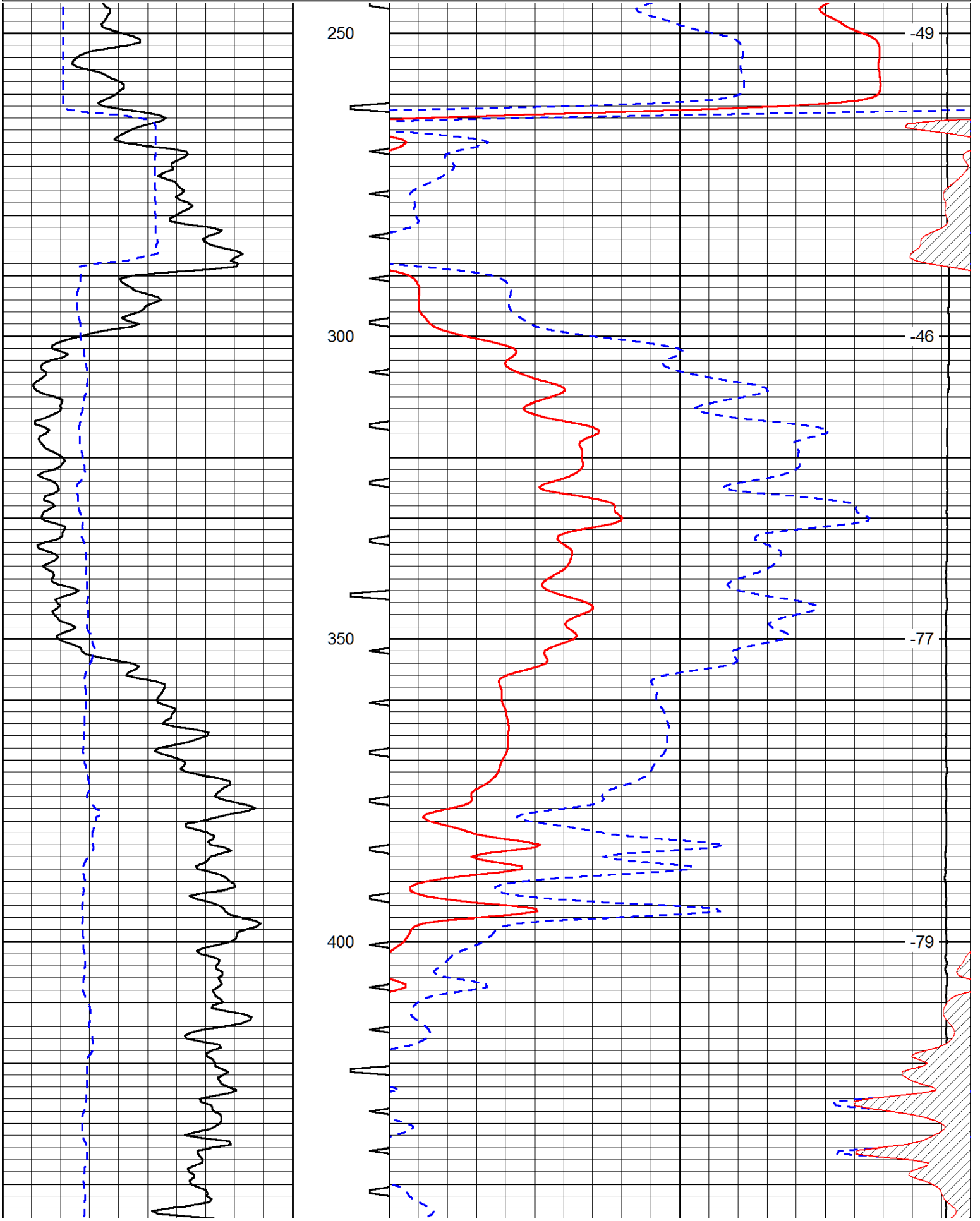
Thank you for using Log-Tech, Inc.  
(785) 625-3858

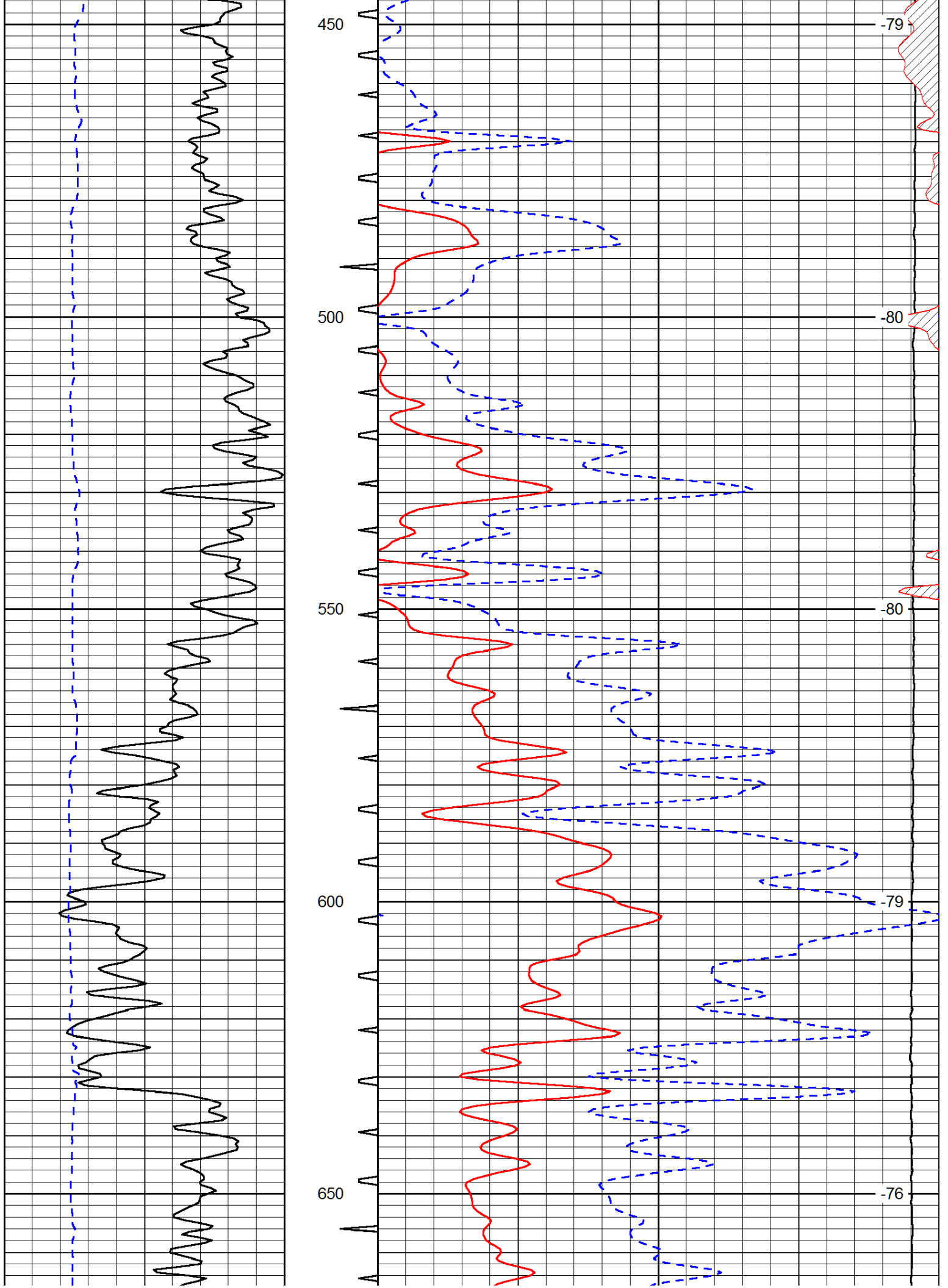
Oakley,  
South to JayHawk Rd,1 South,  
West into at Gates ( About 3 Miles West)

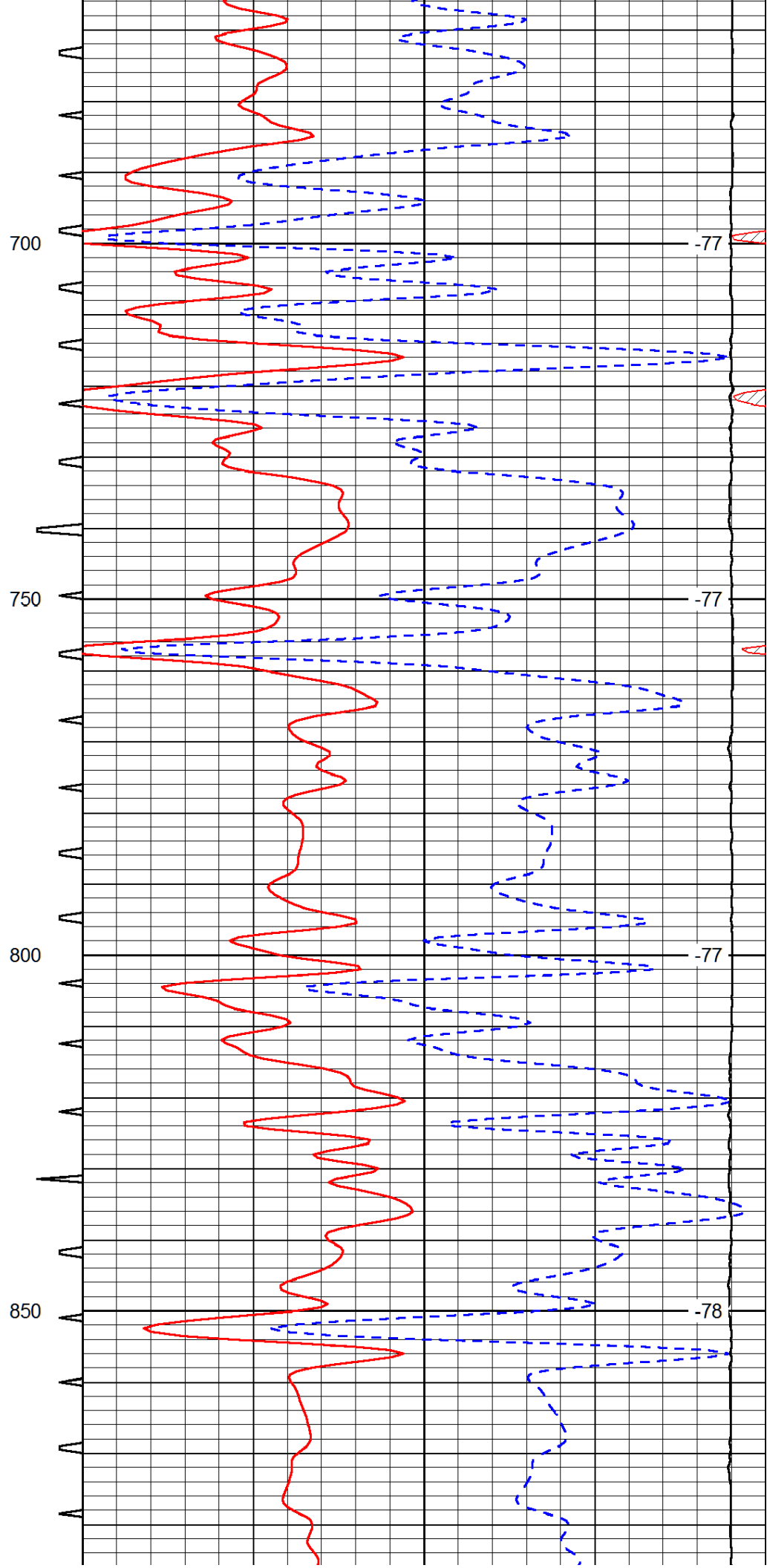
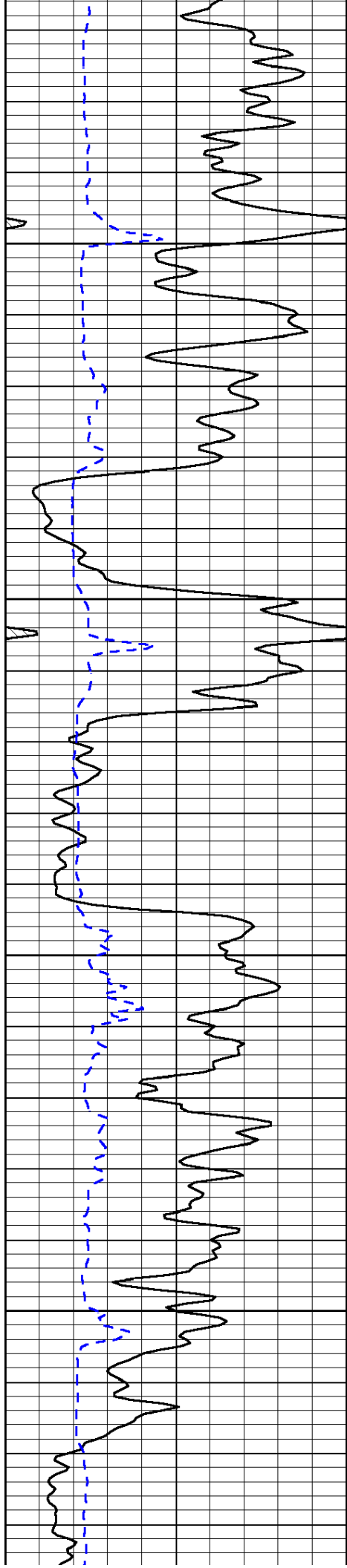
Database File:	black_tea_050814hd.db
Dataset Pathname:	DIL/btstk
Presentation Format:	sonic
Dataset Creation:	Thu May 08 20:36:40 2014
Charted by:	Depth in Feet scaled 1:240

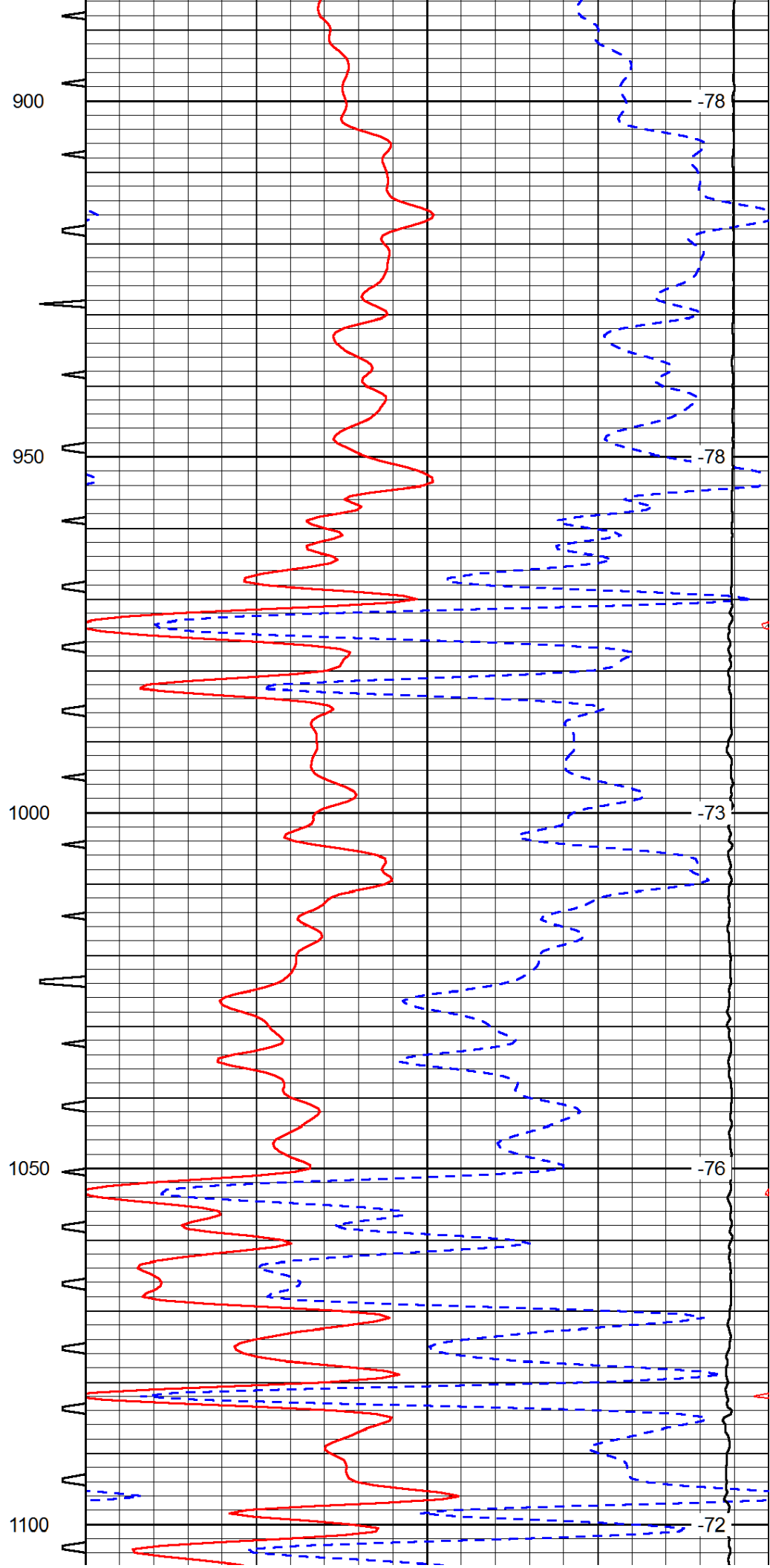
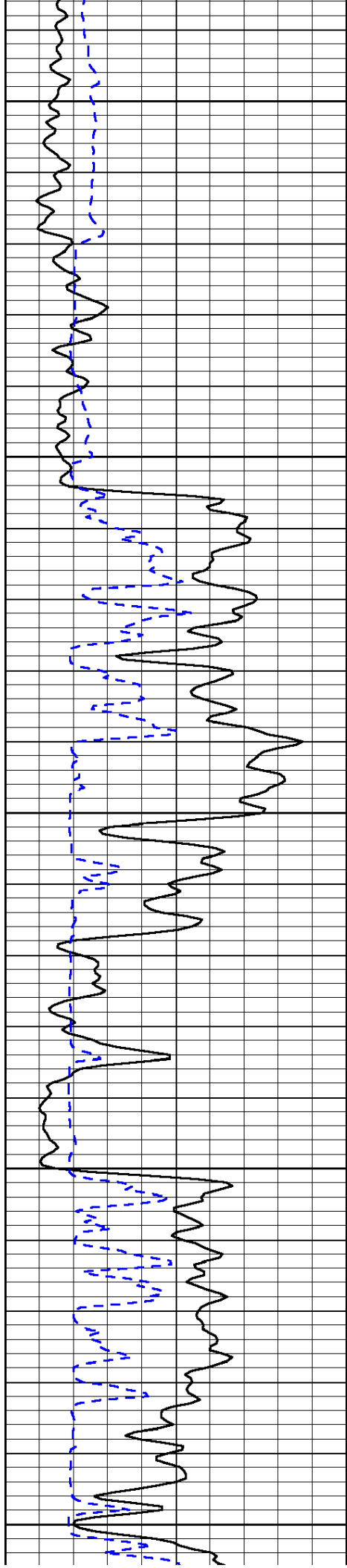
0	Gamma Ray	150	Sonic Int	140	Delta Time (usec/ft)	40
150	Gamma Ray	300	5	0	Sonic Porosity	-10
6	dCAL (GAPI)	16		15000	LTEN (lb)	0

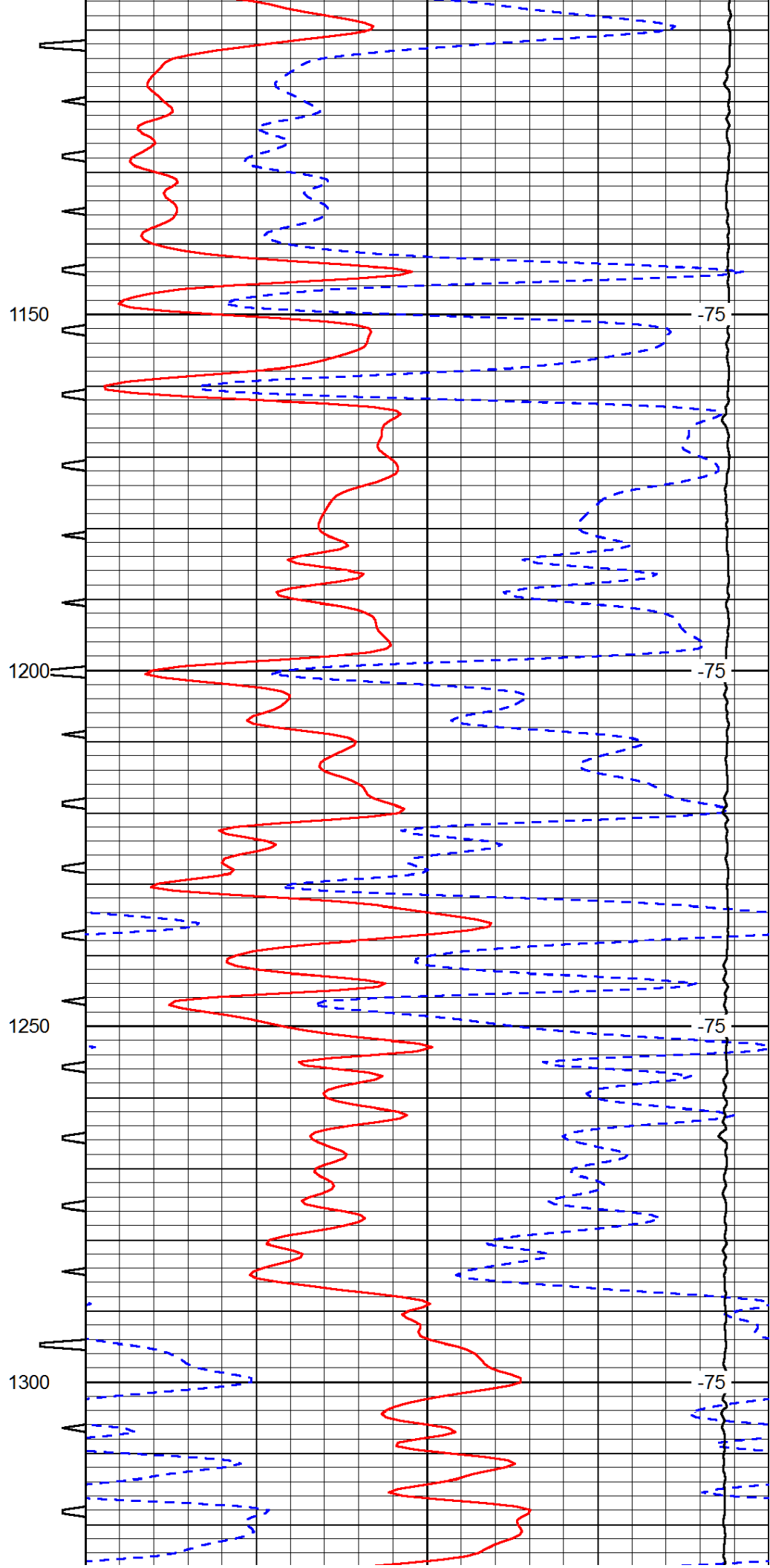
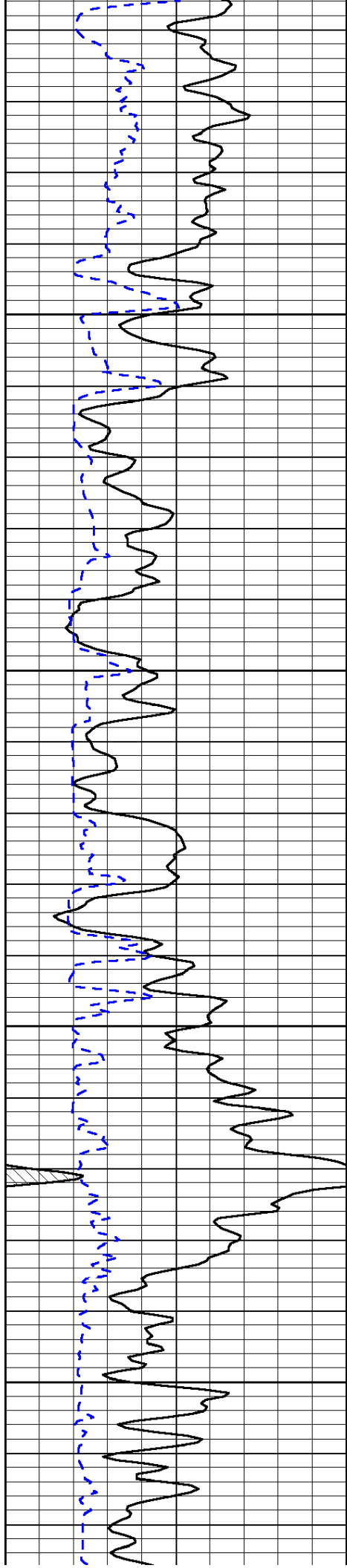
LSPD

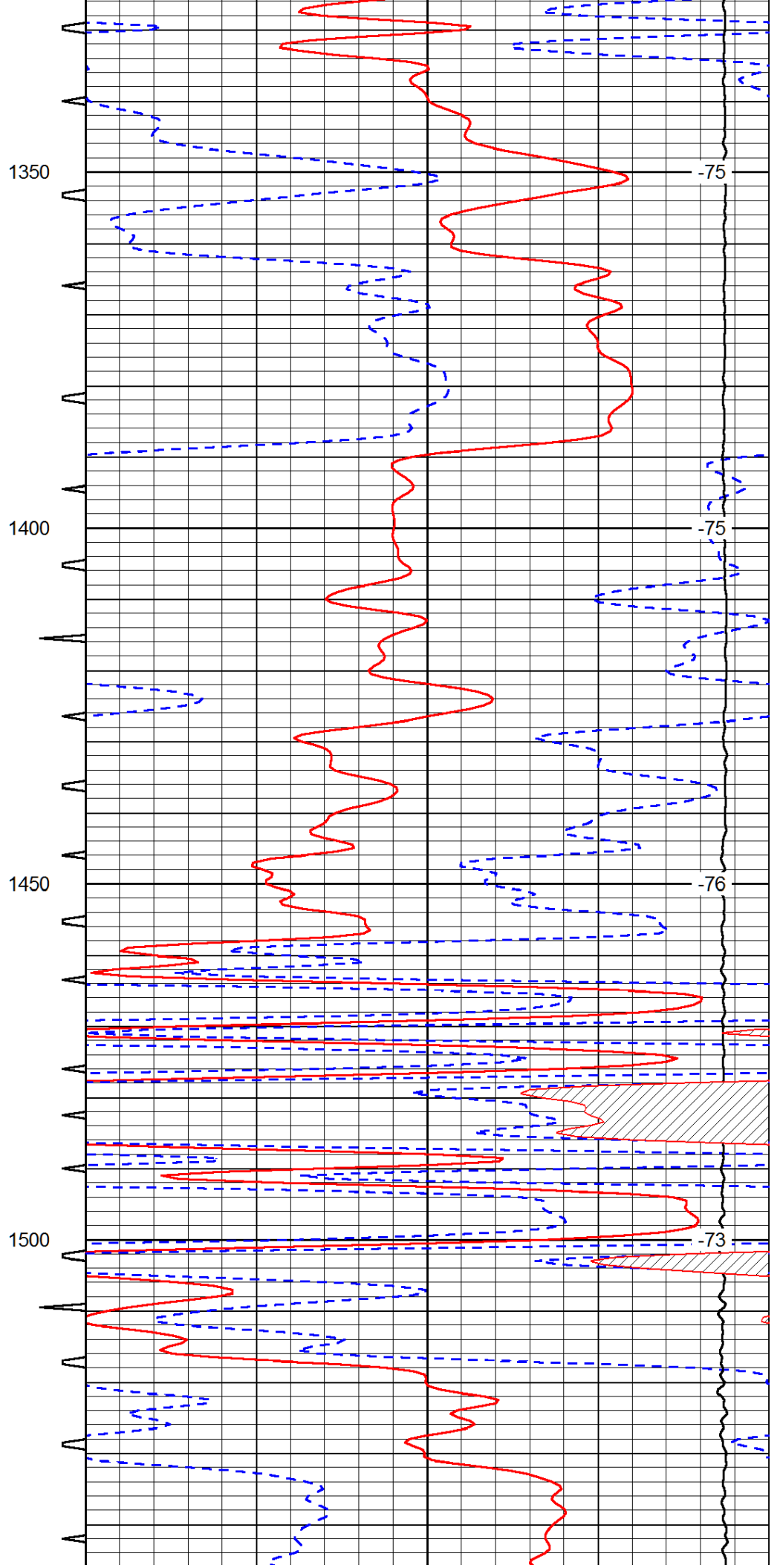
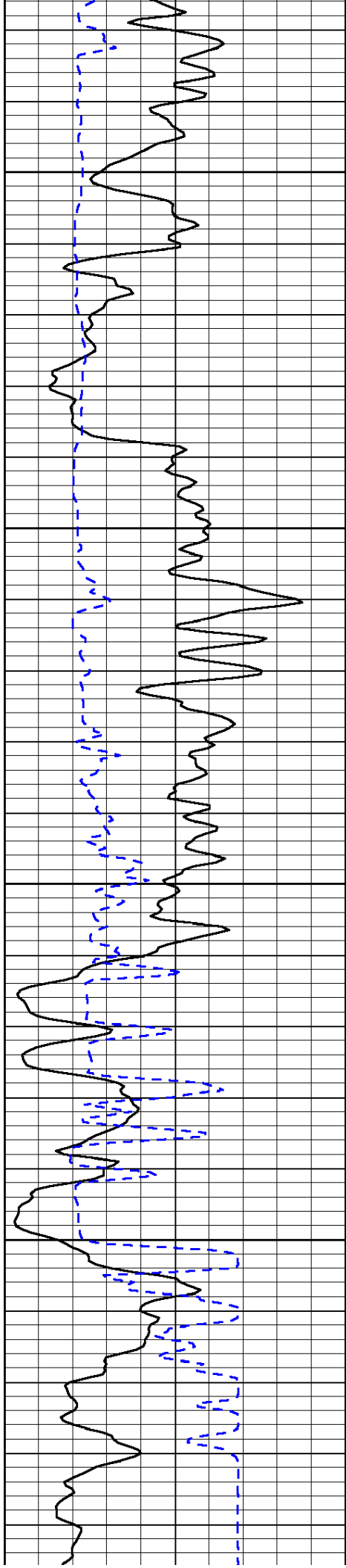


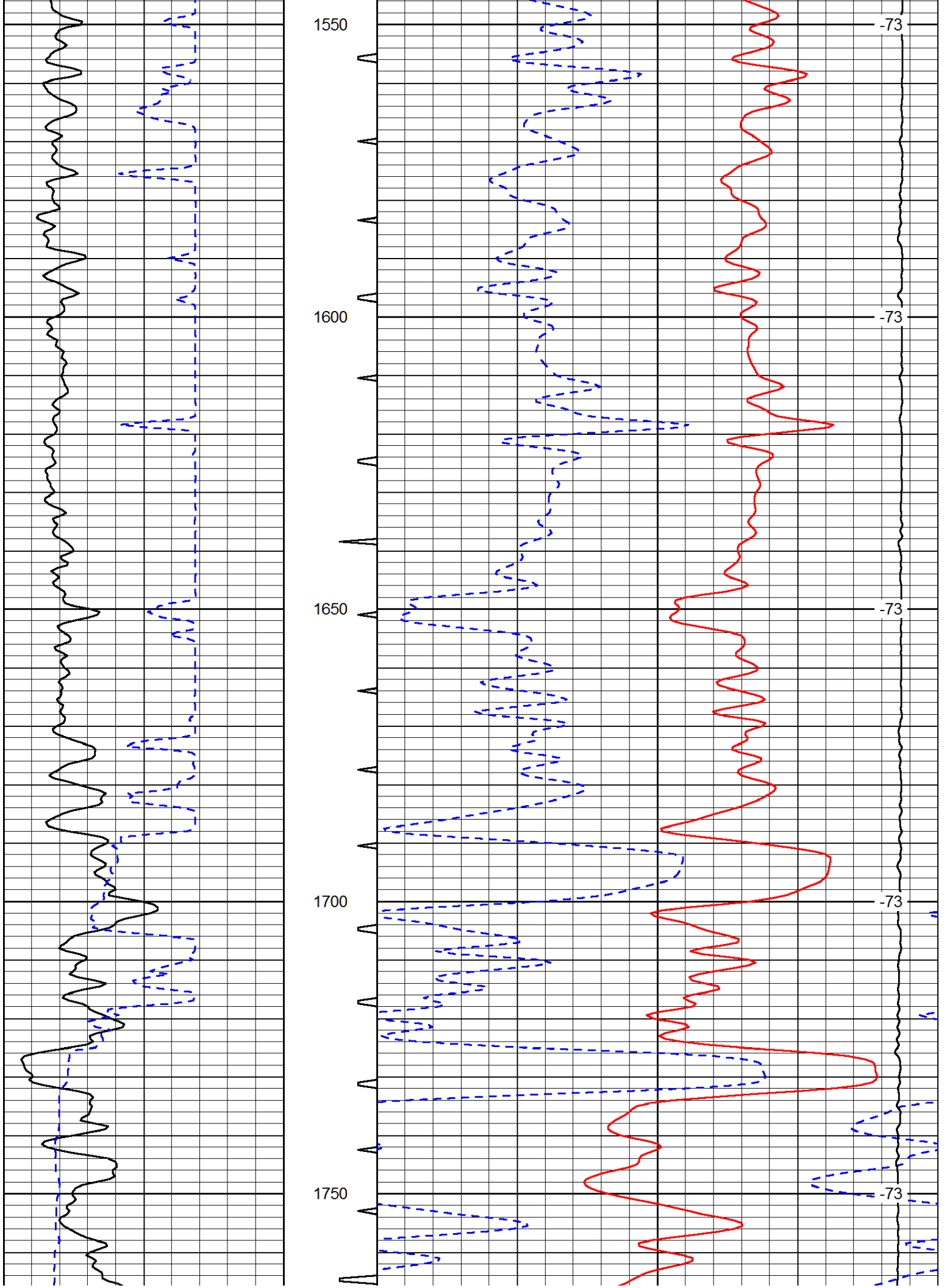




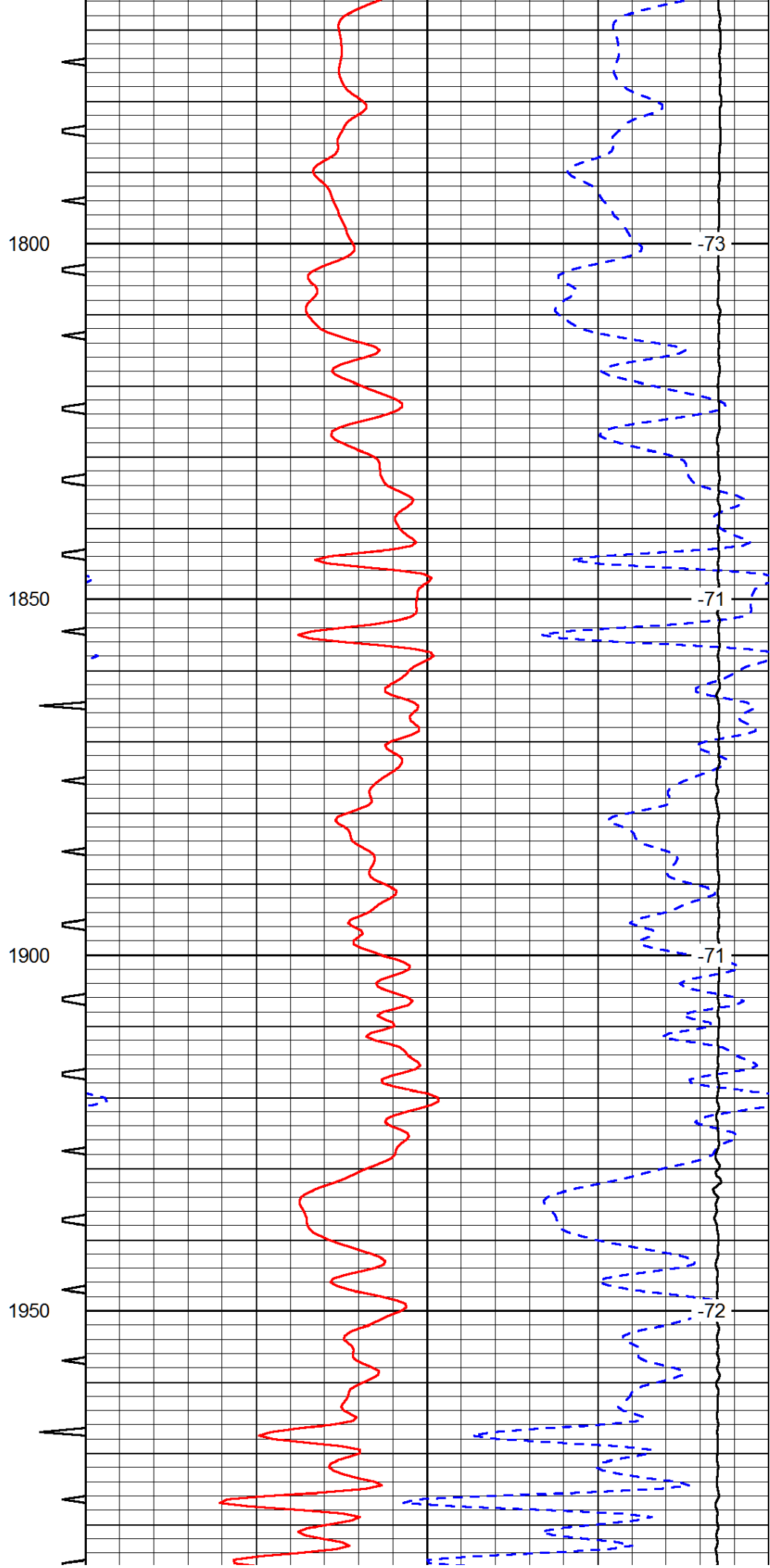
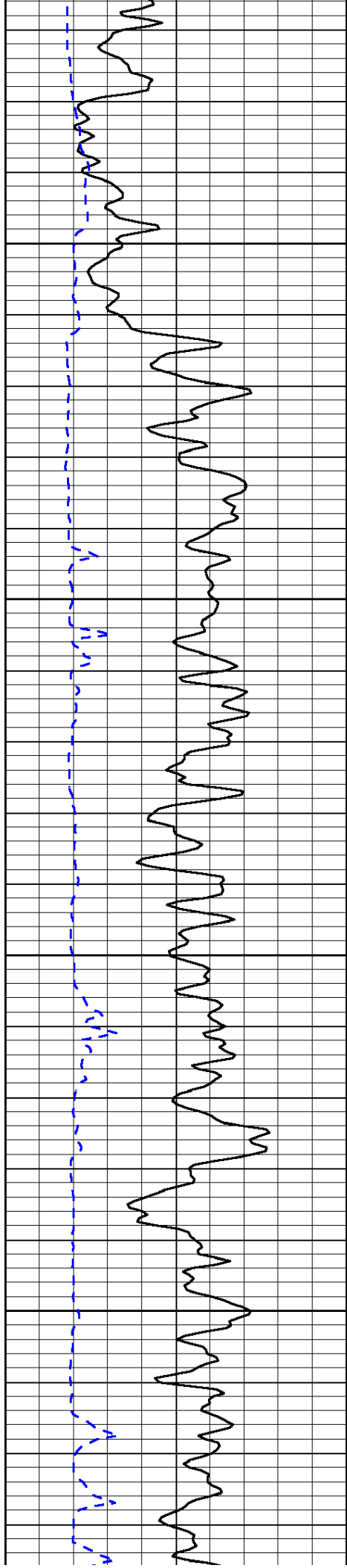


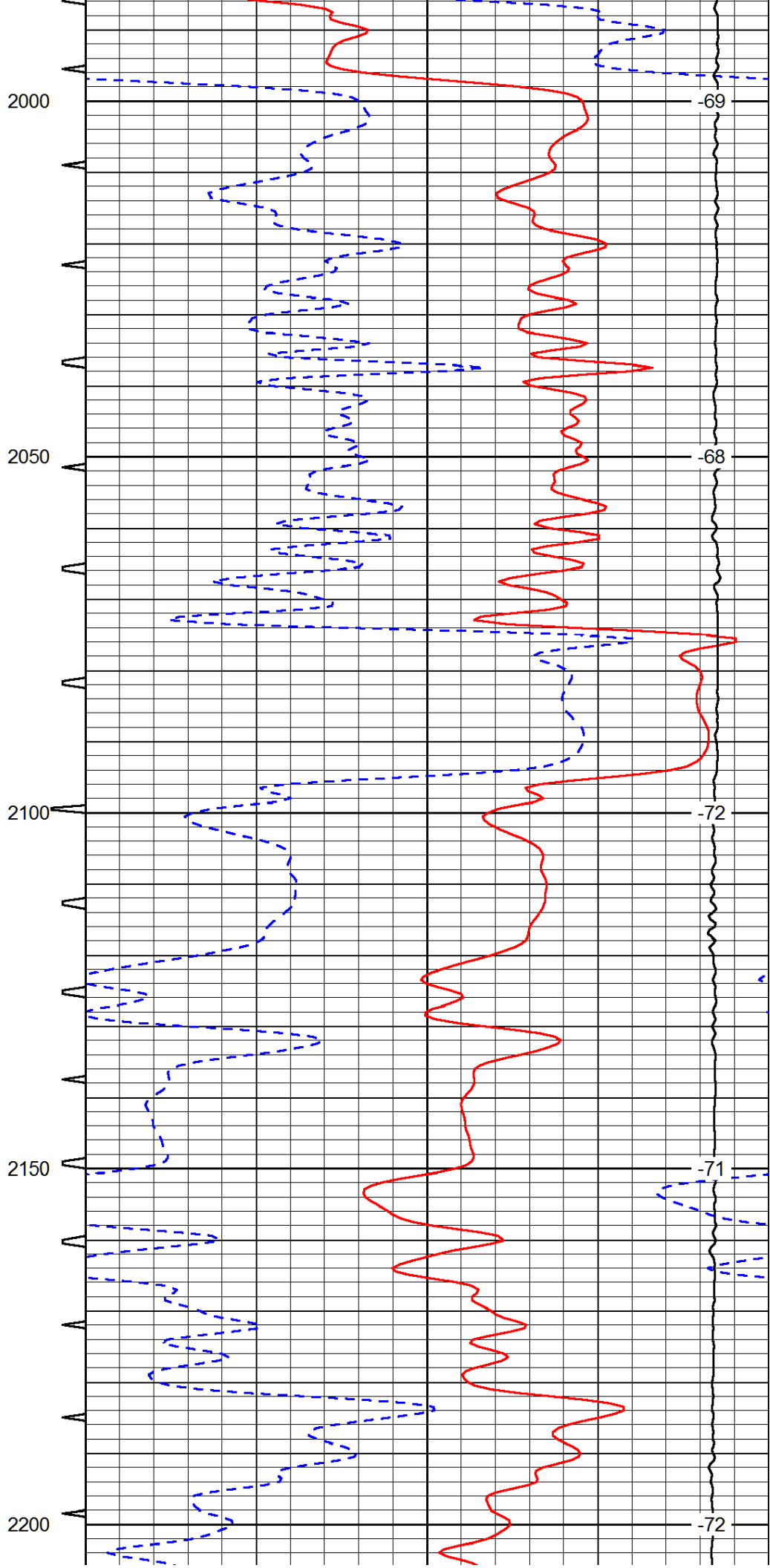
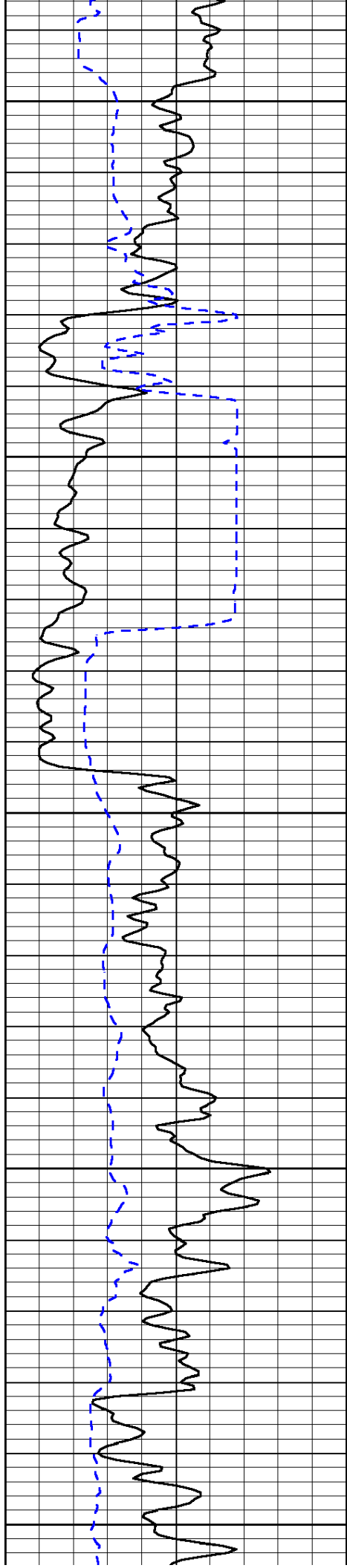


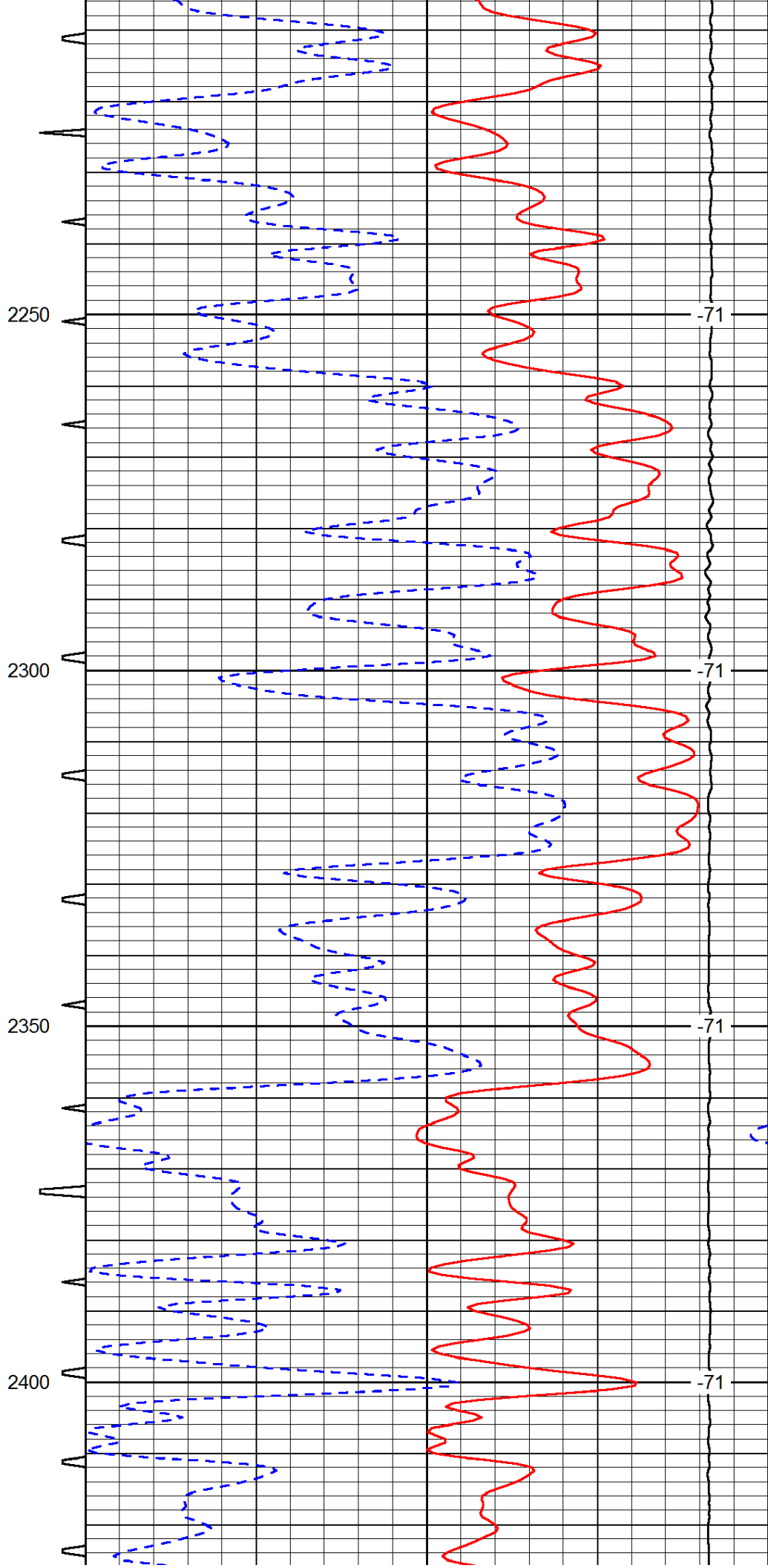
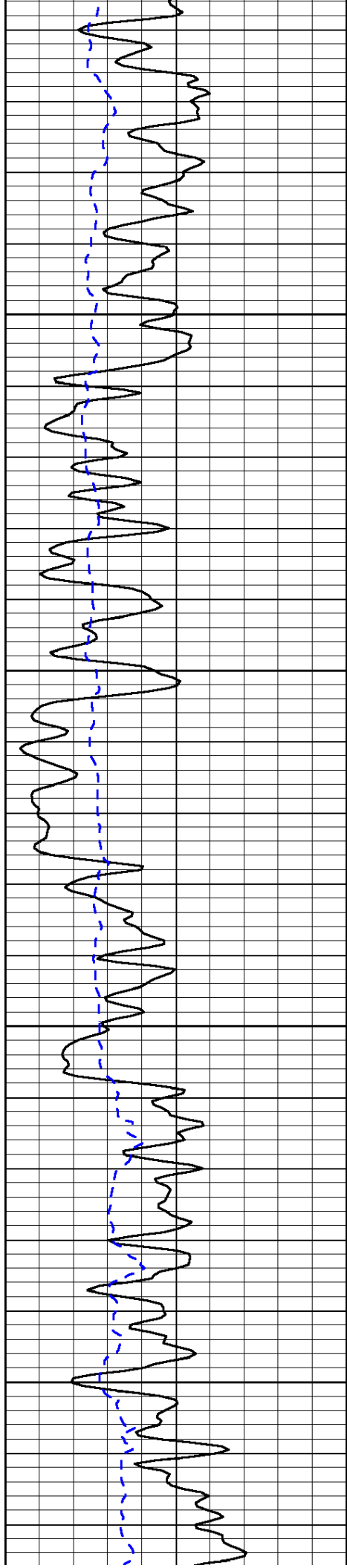


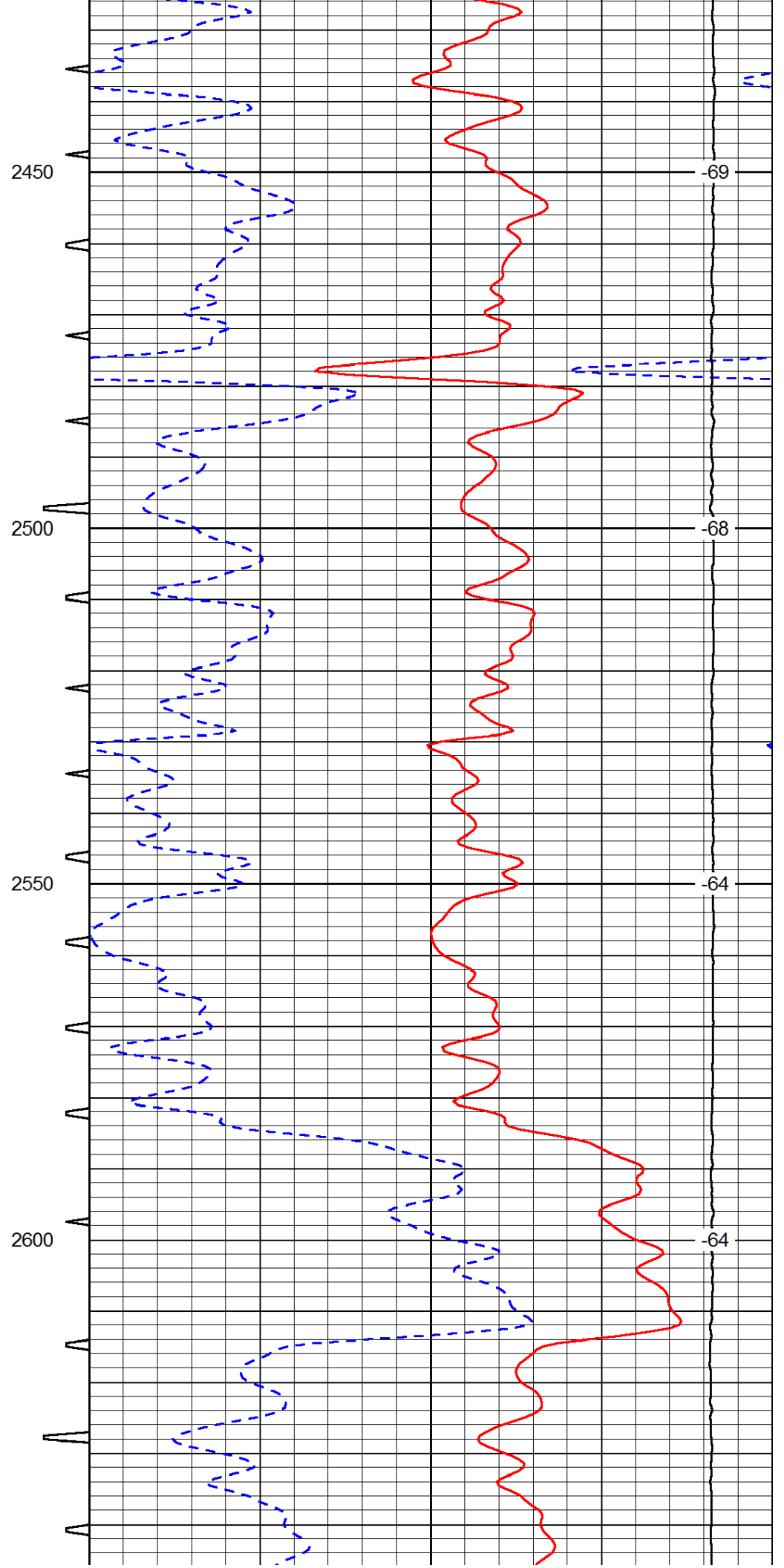
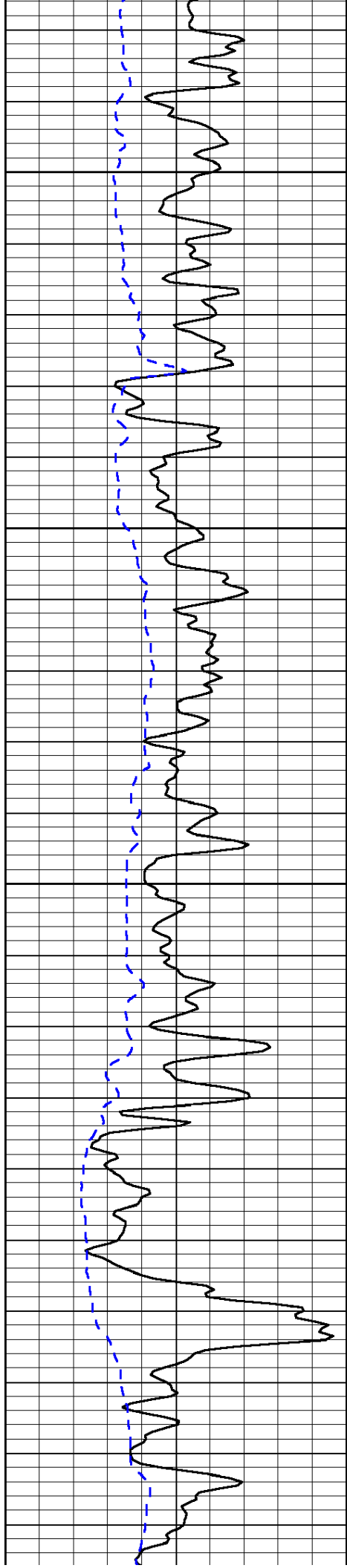


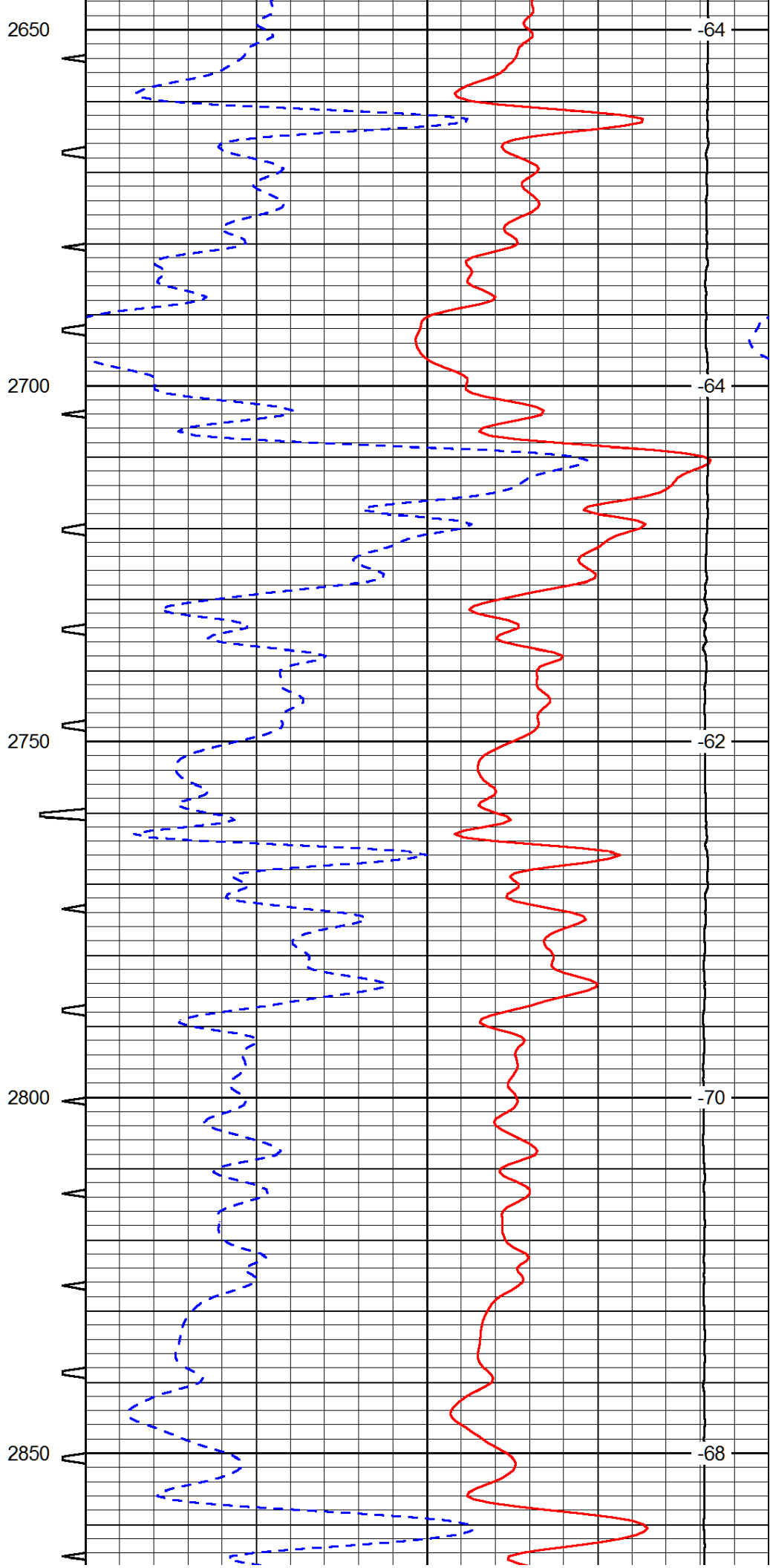
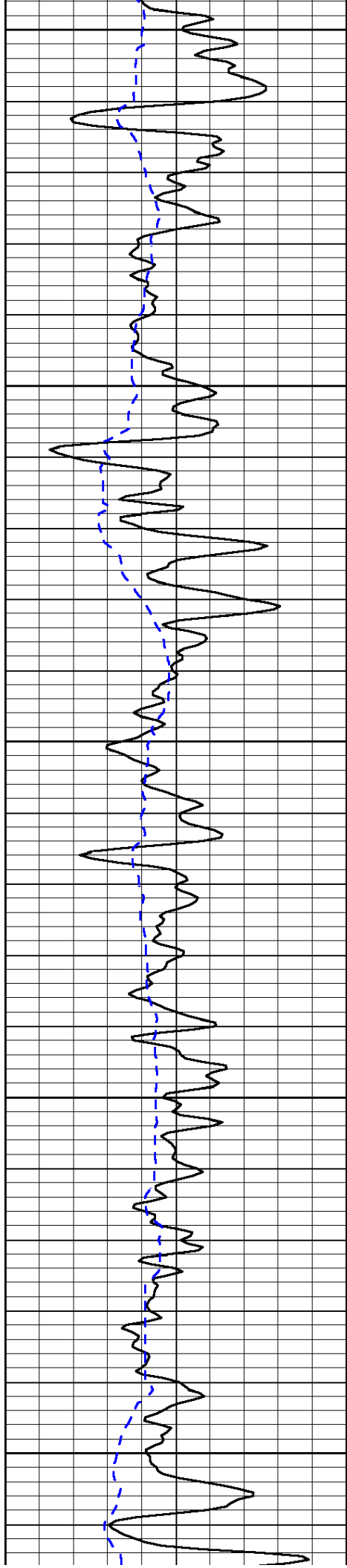


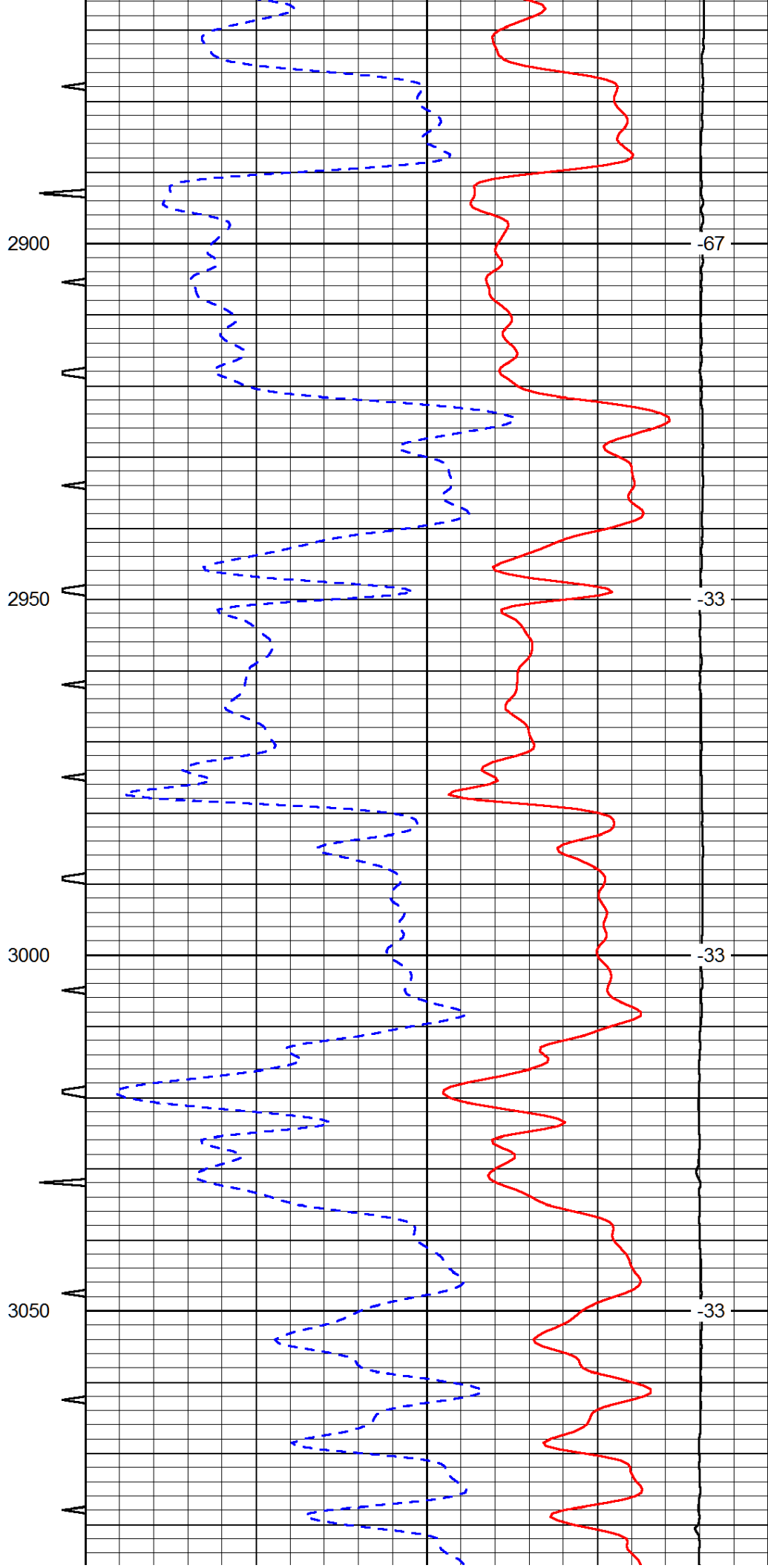
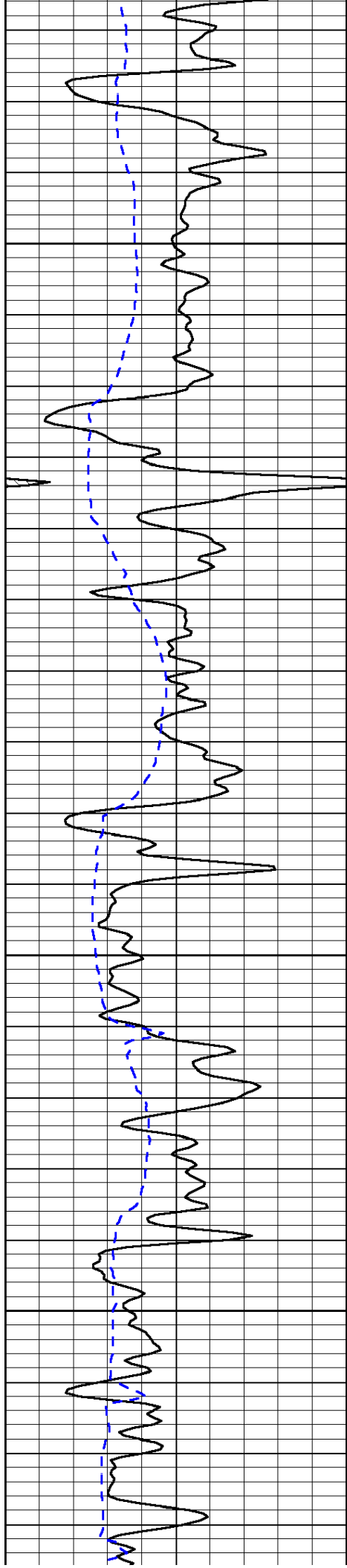


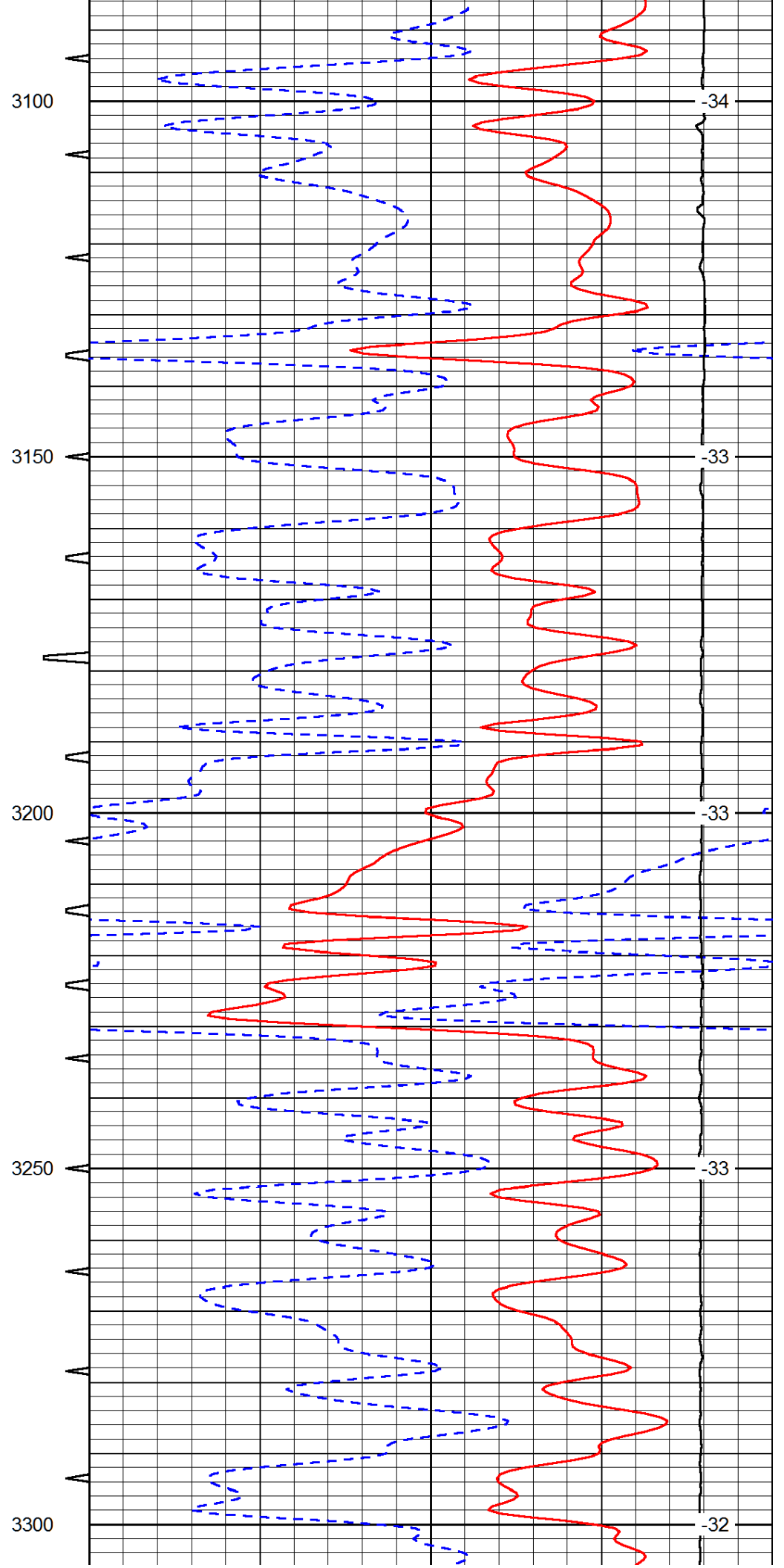
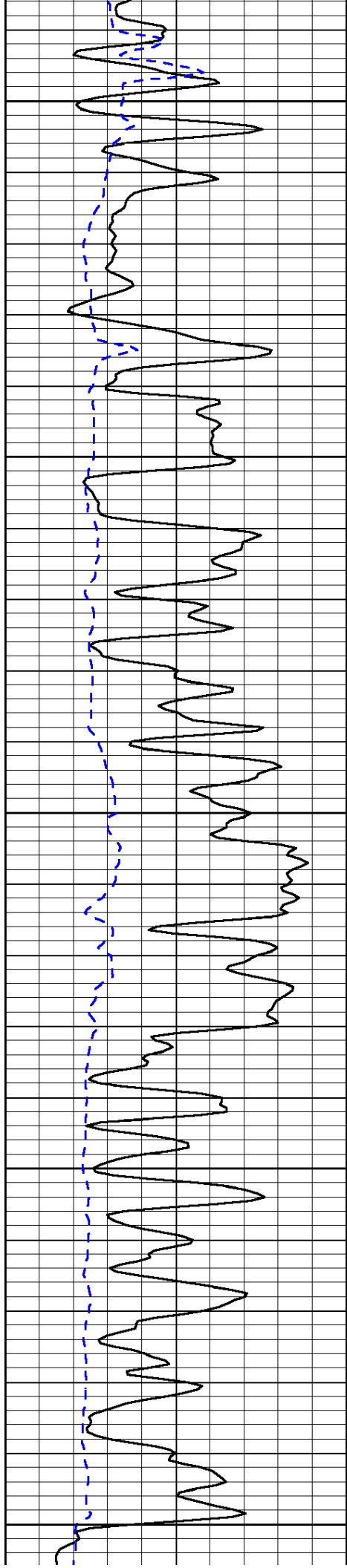


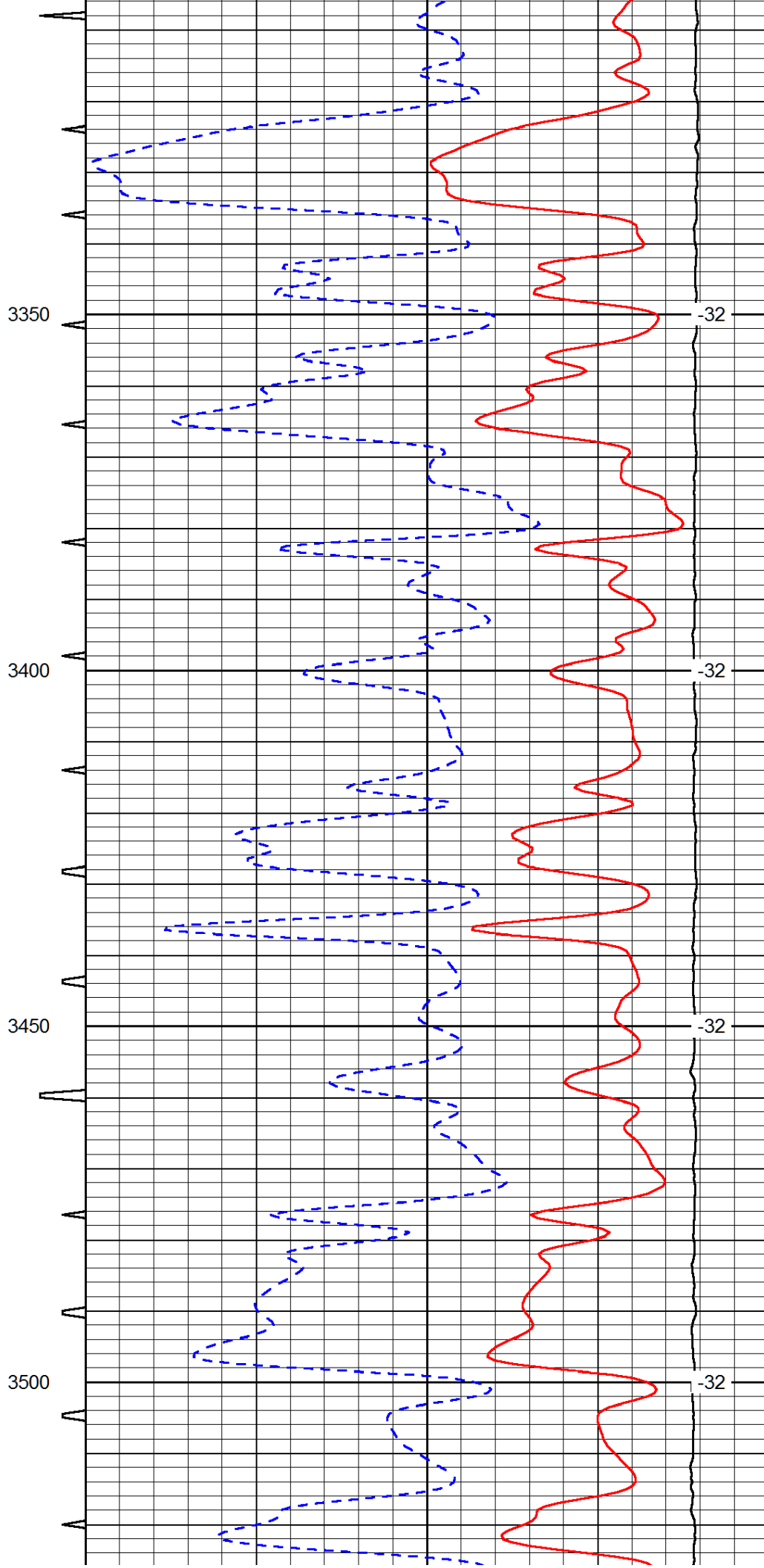
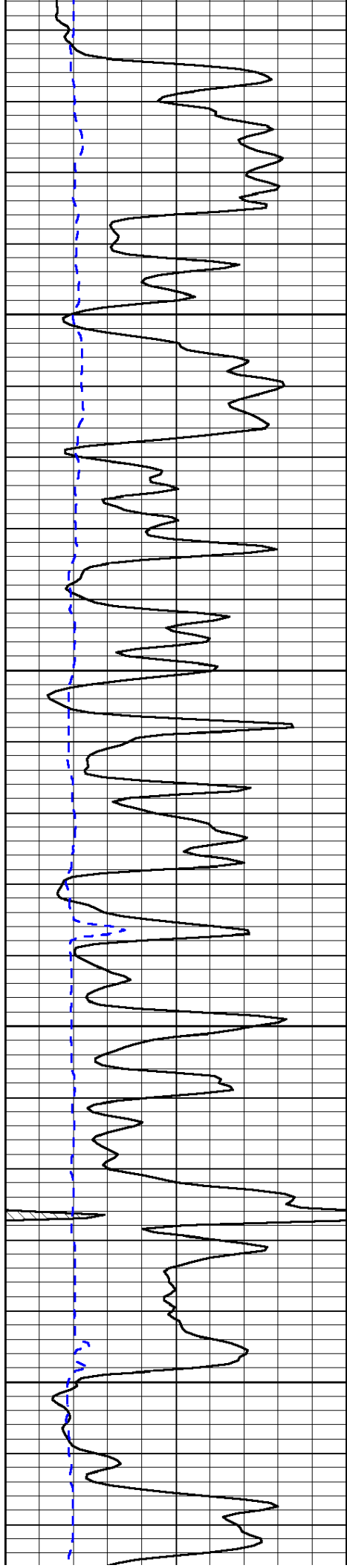




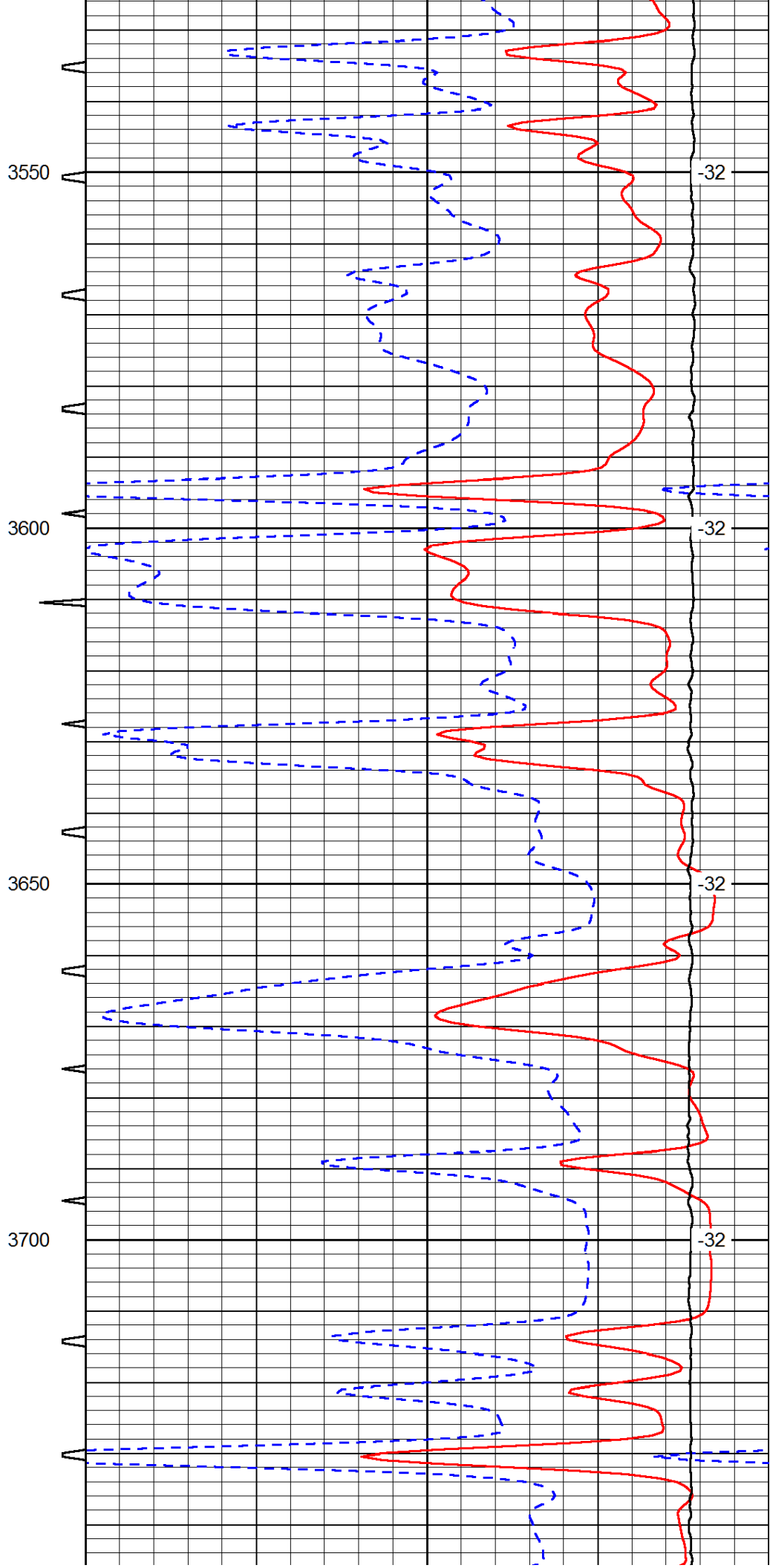
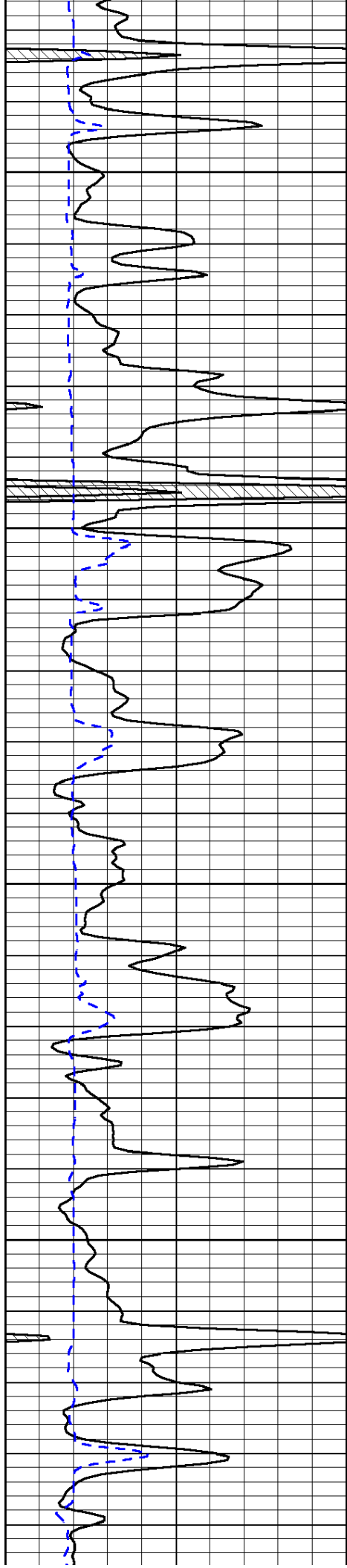


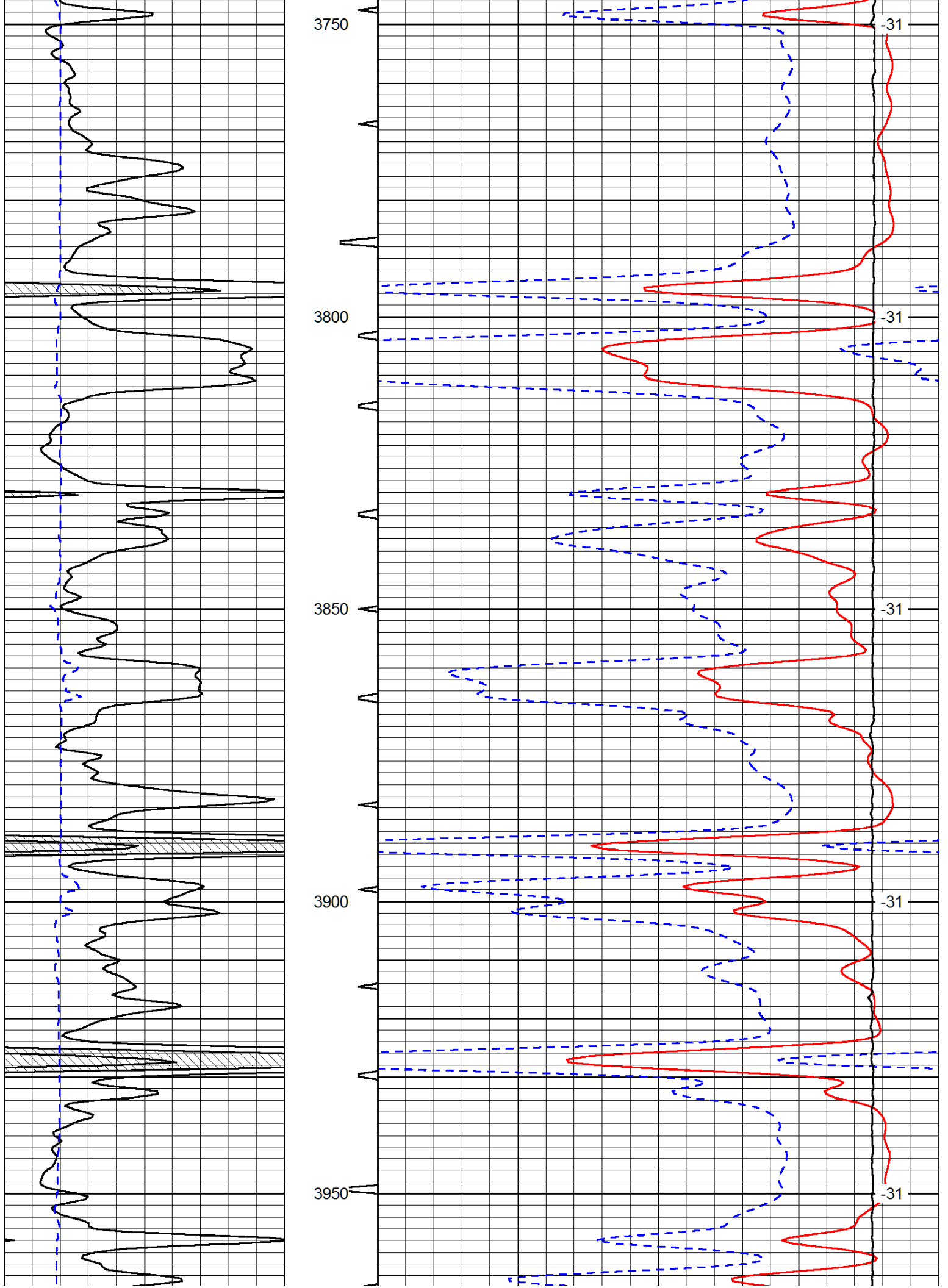


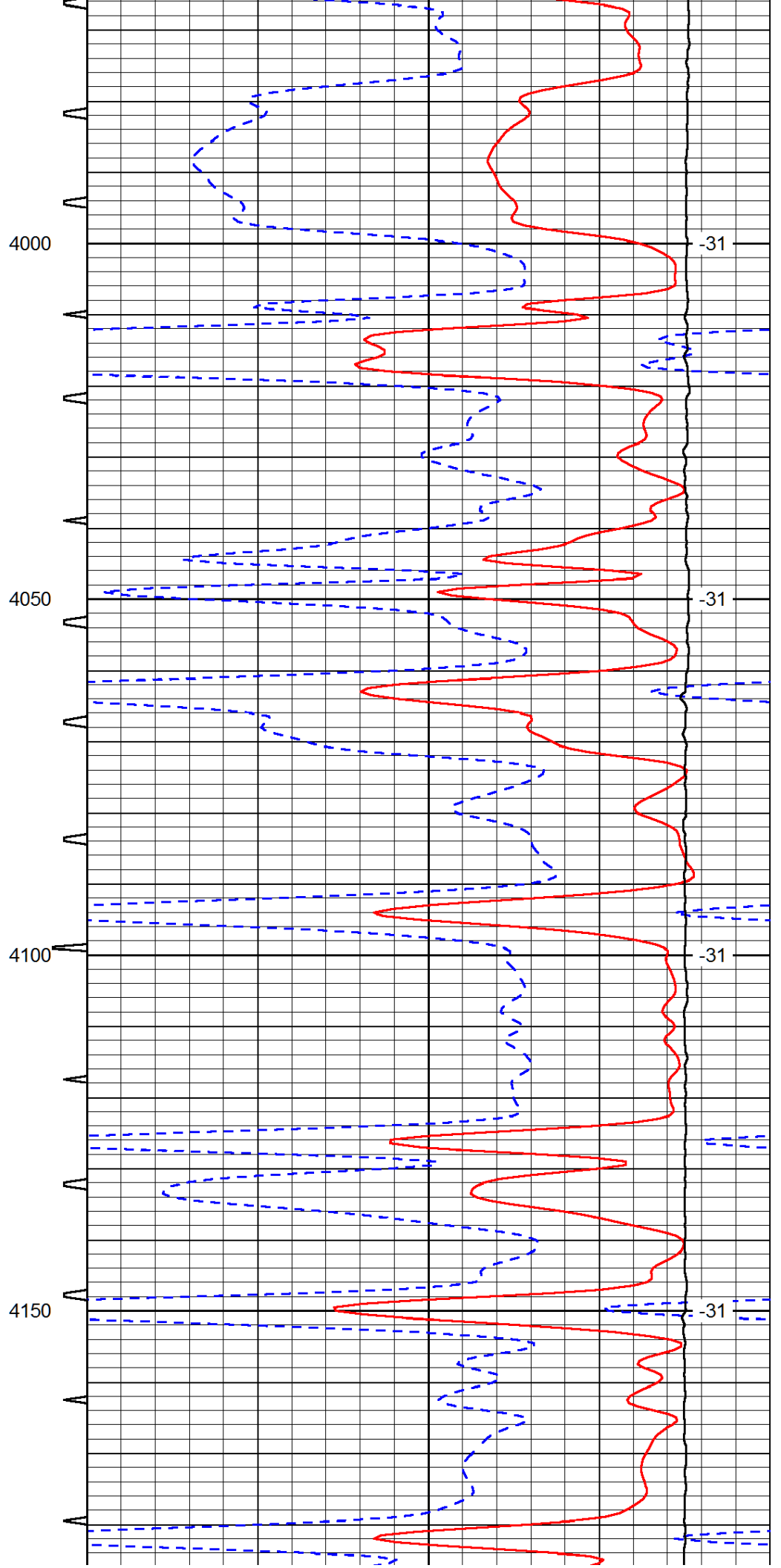
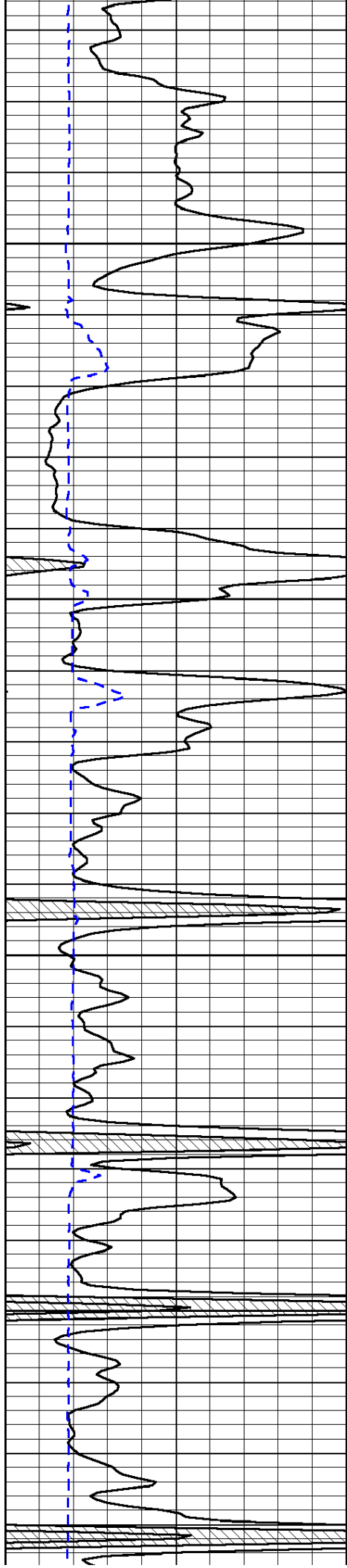


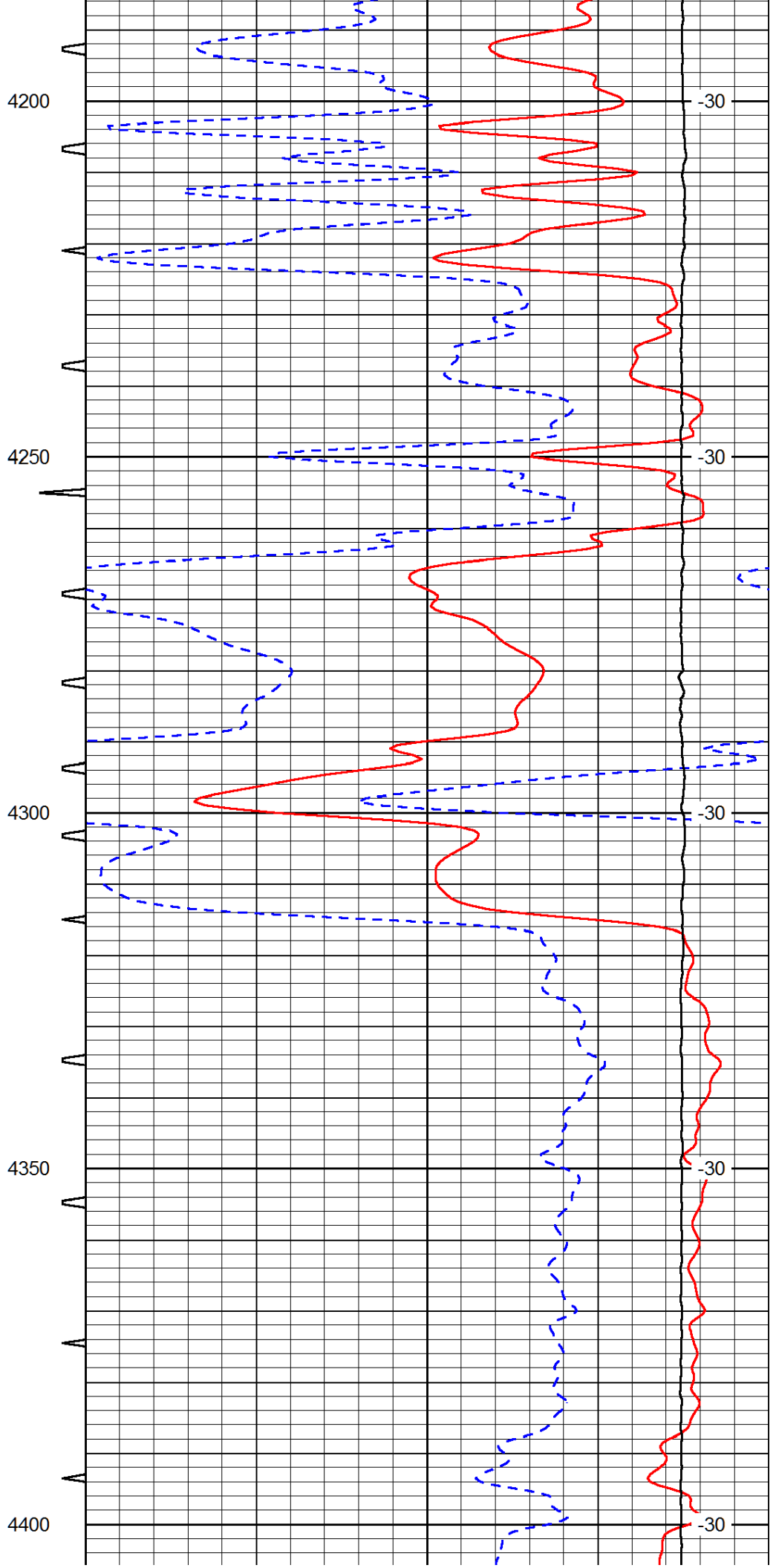
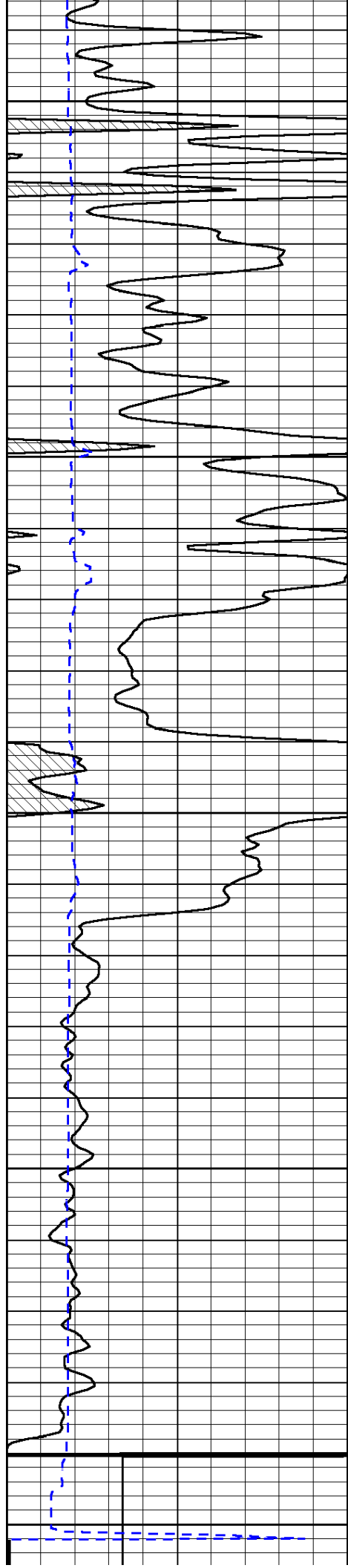


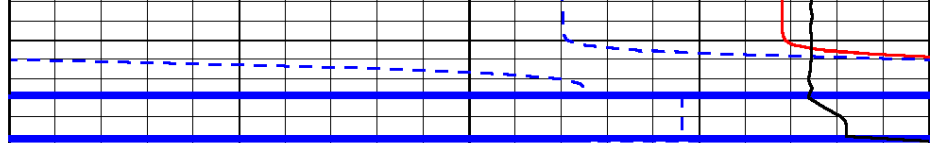
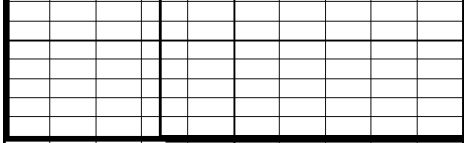












0	Gamma Ray	150
150	Gamma Ray	300
6	dCAL (GAPI)	16

Sonic Int 5 0

140	Delta Time (usec/ft)	40
30	Sonic Porosity	-10
15000	LTEN (lb)	0

LSPD