



Pioneer Energy Services

# Microresistivity Log

15-153-21,007-00-00

API No.

**Company** Forestar Petroleum Corporation  
**Well** K&K # 2-31  
**Field** Beaver Creek  
**County** Rawlins **State** Kansas

**Location** SW-SE-SW-NW  
 2500' FNL & 900' FWL  
 Sec: 31 Twp: 1S Rge: 31W

Other Services  
 CNL/CDL  
 DIL

**Permanent Datum** Ground Level Elevation 2870  
**Log Measured From** Kelly Bushing 6 Ft. Above Perm. Datum  
**Drilling Measured From** Kelly Bushing

Elevation  
 K.B. 2876  
 D.F.  
 G.L. 2870

Date	5/14/2014
Run Number	Two
Depth Driller	4150
Depth Logger	4151
Bottom Logged Interval	4150
Top Log Interval	3400
Casing Driller	8.625 @ 218
Casing Logger	218
Bit Size	7.875
Type Fluid in Hole	Chemical
Salinity, ppm CL	500
Density / Viscosity	9.1 54
pH / Fluid Loss	11.5 6.4
Source of Sample	Flowline
Rm @ Meas. Temp	.90 @ 72
Rmf @ Meas. Temp	.68 @ 72
Rmc @ Meas. Temp	1.22 @ 72
Source of Rmf / Rmc	Charts
Rm @ BHT	.55 @ 118
Operating Rig Time	4 Hours
Max Rec. Temp. F	118
Equipment Number	108
Location	Hays
Recorded By	J. Hennickson
Witnessed By	Charles Sturdavant

<<< Fold Here >>>

All interpretations are opinions based on inferences from electrical or other measurements and we cannot and do not guarantee the accuracy or correctness of any interpretation, and we shall not, except in the case of gross or willful negligence on our part, be liable or responsible for any loss, costs, damages, or expenses incurred or sustained by anyone resulting from any interpretation made by any of our officers, agents or employees. These interpretations are also subject to our general terms and conditions set out in our current Price Schedule.

**Comments**

Thank you for using Pioneer Energy Services  
[www.pioneerenergy.com](http://www.pioneerenergy.com)  
 785 625 3858

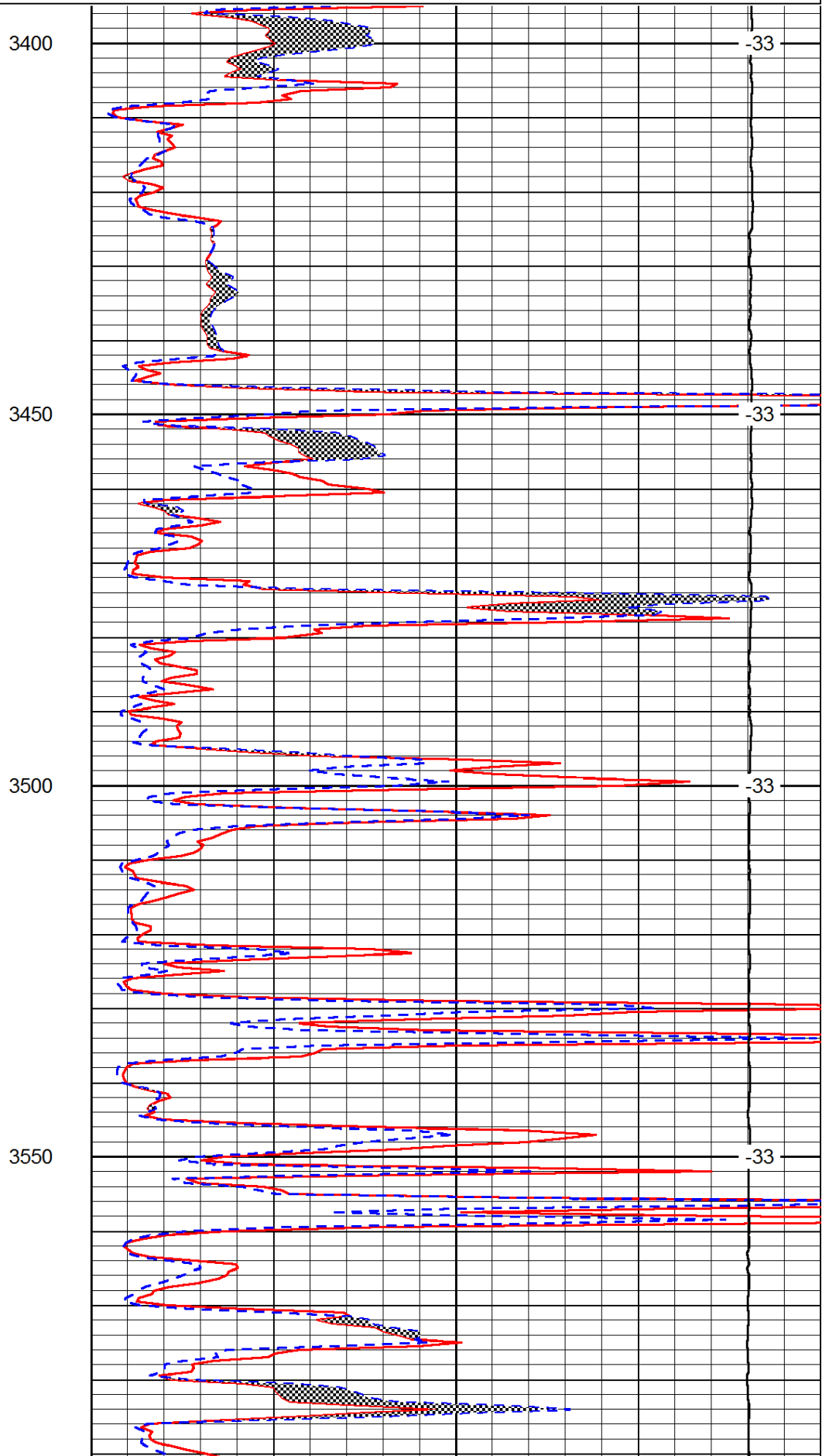
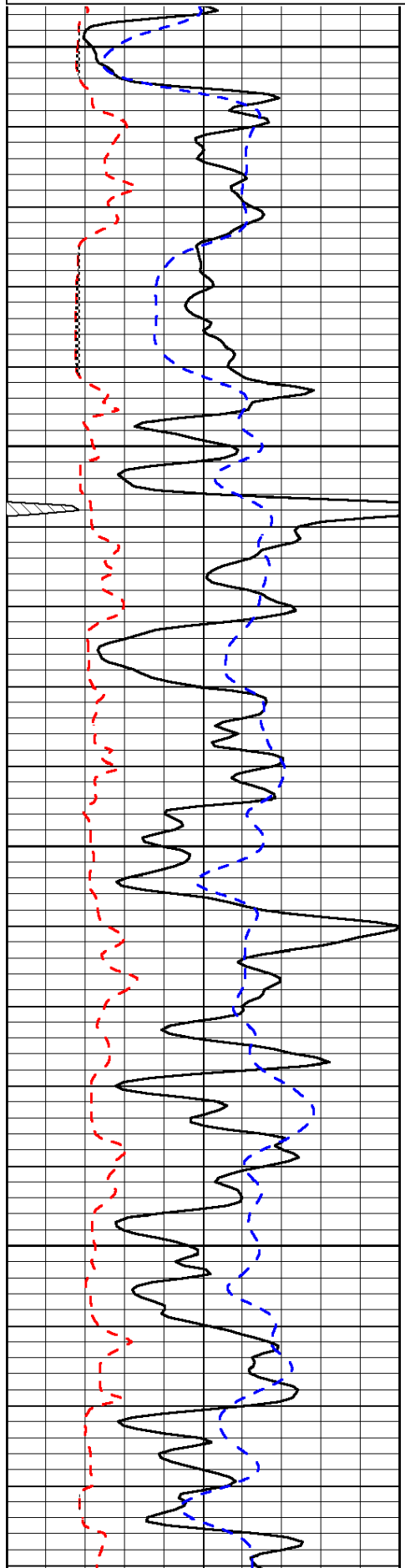
Herndon Kansas  
 North Edge of Town, 3 1/2 West, 1 North, 1/2 West, South Into

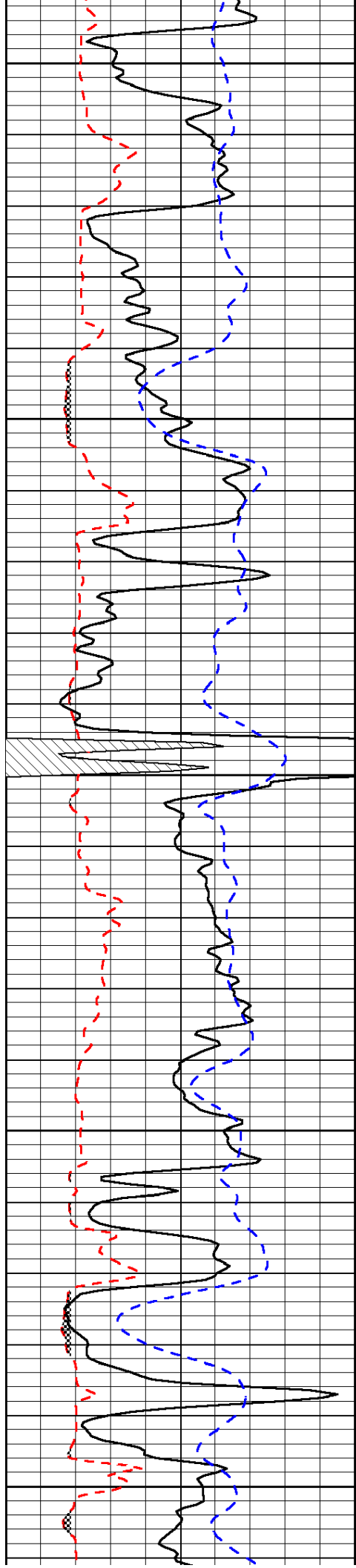
Database File: c:\warrior\data\forestar\_k&k # 2-31\forestar\_k\_k\_2\_31hd.db  
 Dataset Pathname: DIL\forestk  
 Presentation Format: micro  
 Dataset Creation: Thu May 15 00:18:08 2014  
 Charted by: Depth in Feet scaled 1:240

0	Gamma Ray	150
6	Micro Log Caliper (GAPI)	16
-200	SP (mV)	0

0	Micro Inverse 1 X 1	40
0	Micro Normal 2"	40
15000	Line Weight	0

LSPD





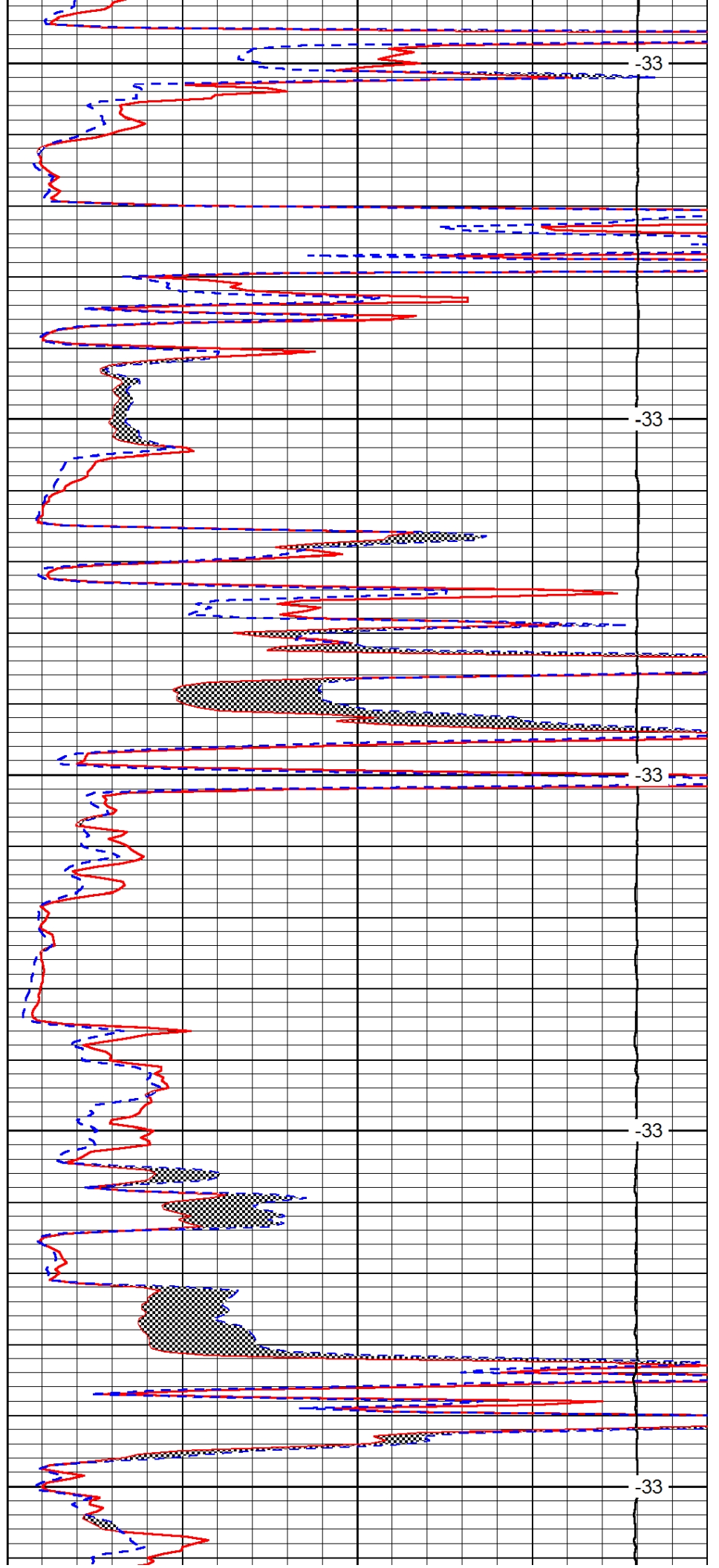
3600

3650

3700

3750

3800



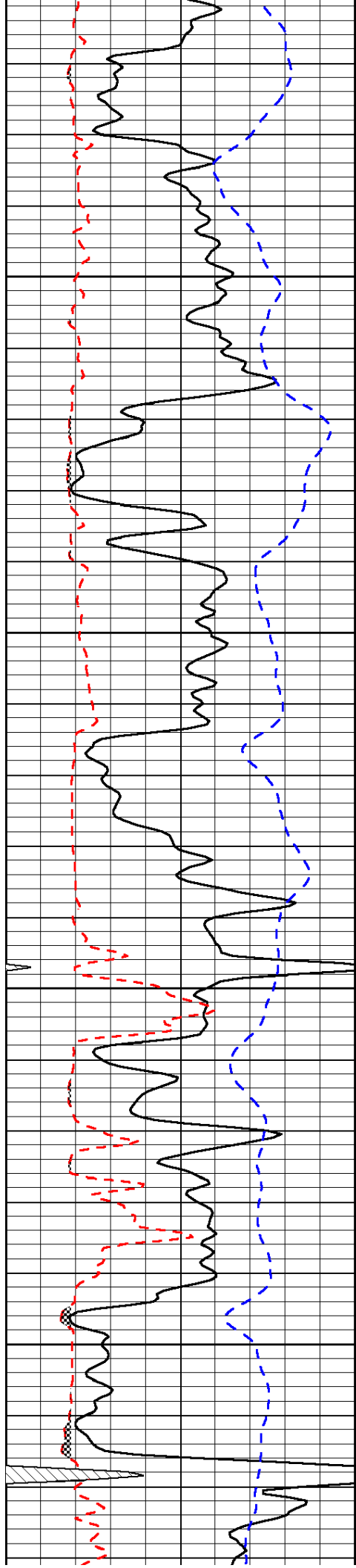
-33

-33

-33

-33

-33

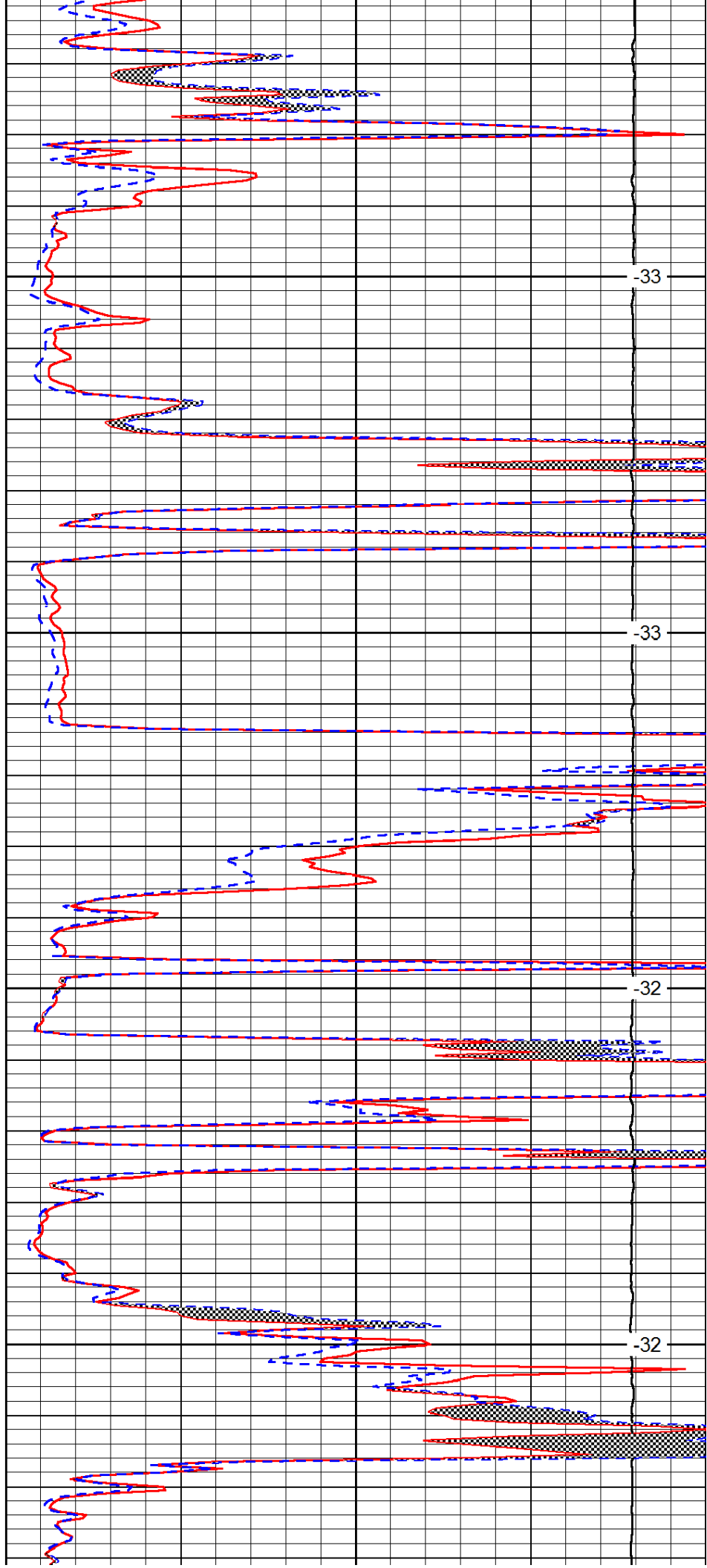


3850

3900

3950

4000

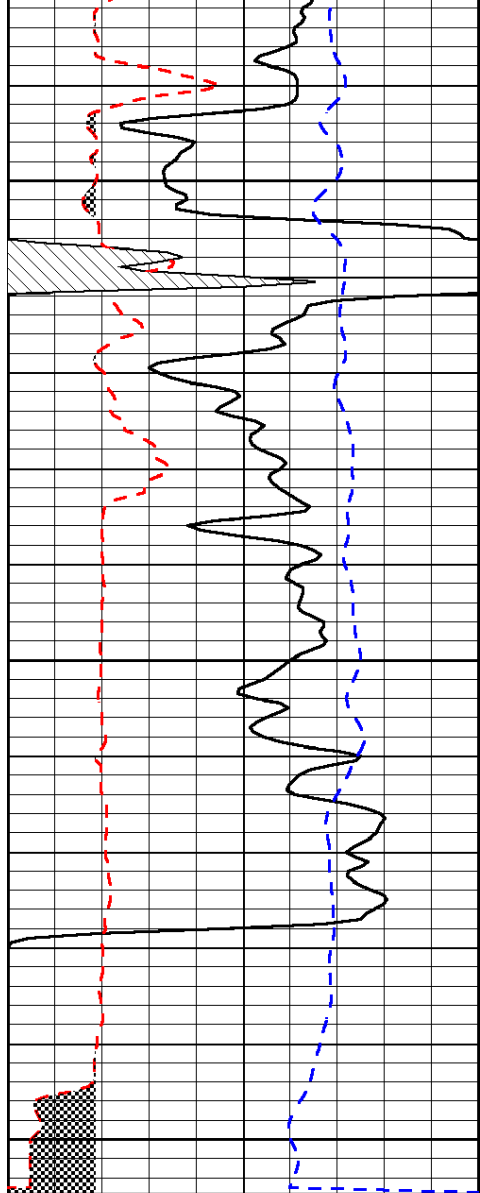


-33

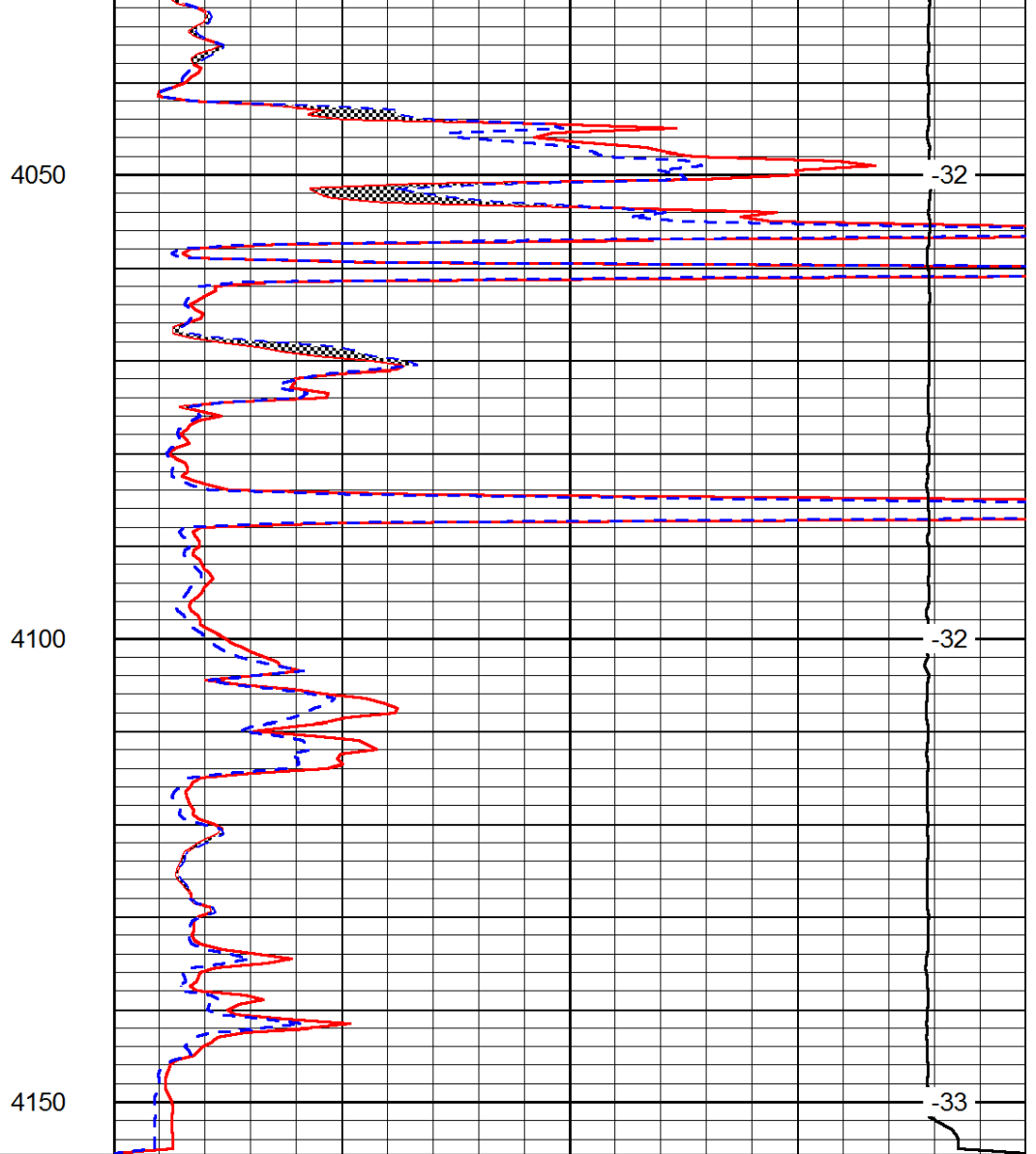
-33

-32

-32



0	Gamma Ray	150
6	Micro Log Caliper (GAPI)	16
-200	SP (mV)	0



0	Micro Inverse 1 X 1	40
0	Micro Normal 2''	40
15000	Line Weight	0

LSPD