



Pioneer Energy Services

Dual Induction Log

15-153-21,007-00-00

API No.

Company **Forestar Petroleum Corporation**

Well **K&K # 2-31**

Field **Beaver Creek**

County **Rawlins** State

Kansas

Location

SW-SE-SW-NW
2500' FNL & 900' FWL

Sec: 31 Twp: 1S Rge: 31W

Other Services
CNL/CDL
MEL

Permanent Datum Ground Level Elevation 2870
Log Measured From Kelly Bushing 6 Ft. Above Perm. Datum

Drilling Measured From Kelly Bushing

Elevation
K.B. 2876
D.F.
G.L. 2870

Date 5/14/2014

Run Number One

Depth Driller 4150

Depth Logger 4151

Bottom Logged Interval 4150

Top Log Interval 200

Casing Driller 8.625 @ 218

Casing Logger 218

Bit Size 7.875

Type Fluid in Hole Chemical

Salinity,ppm CL 500

Density / Viscosity 9.1 54

pH / Fluid Loss 11.5 6.4

Source of Sample Flowline

Rm @ Meas. Temp .90 @ 72

Rmf @ Meas. Temp .68 @ 72

Rmc @ Meas. Temp 1.22 @ 72

Source of Rmf / Rmc Charts

Rm @ BHT .55 @ 118

Operating Rig Time 4 Hours

Max Rec. Temp. F 118

Equipment Number 108

Location Hays

Recorded By J. Hennickson

Witnessed By Charles Sturdavant

<<< Fold Here >>>

All interpretations are opinions based on inferences from electrical or other measurements and we cannot and do not guarantee the accuracy or correctness of any interpretation, and we shall not, except in the case of gross or willful negligence on our part, be liable or responsible for any loss, costs, damages, or expenses incurred or sustained by anyone resulting from any interpretation made by any of our officers, agents or employees. These interpretations are also subject to our general terms and conditions set out in our current Price Schedule.

Comments

Thank you for using Pioneer Energy Services
www.pioneerenergy.com
 785 625 3858

Herndon Kansas
 North Edge of Town, 3 1/2 West, 1 North, 1/2 West, South Into

Database File: c:\warrior\data\forestar_k&k # 2-31\forestar_k_k_2_31hd.db
 Dataset Pathname: DIL/forestk
 Presentation Format: dil2in
 Dataset Creation: Thu May 15 00:18:08 2014
 Charted by: Depth in Feet scaled 1:600

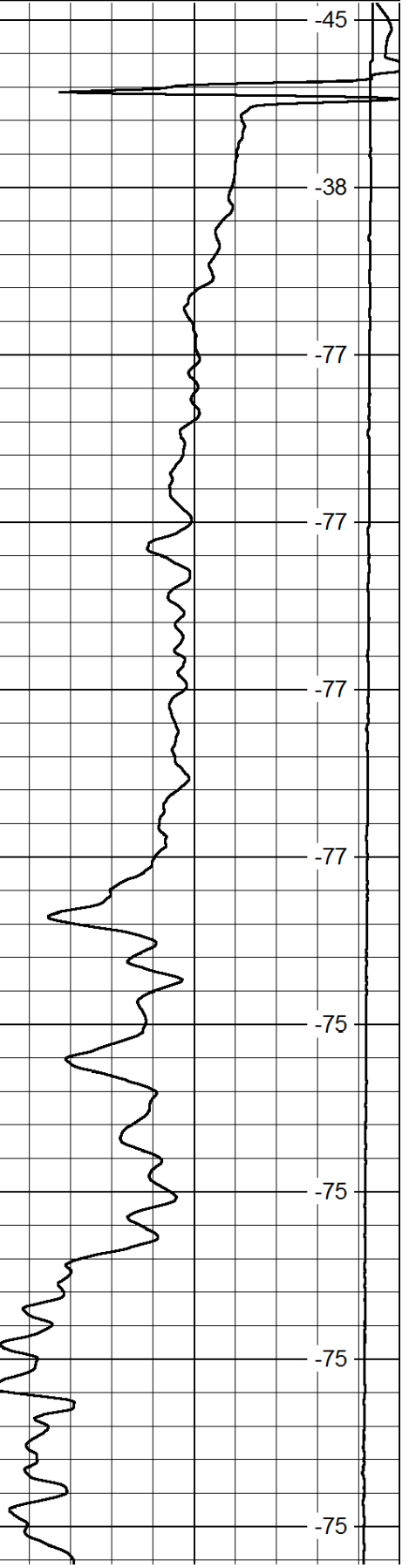
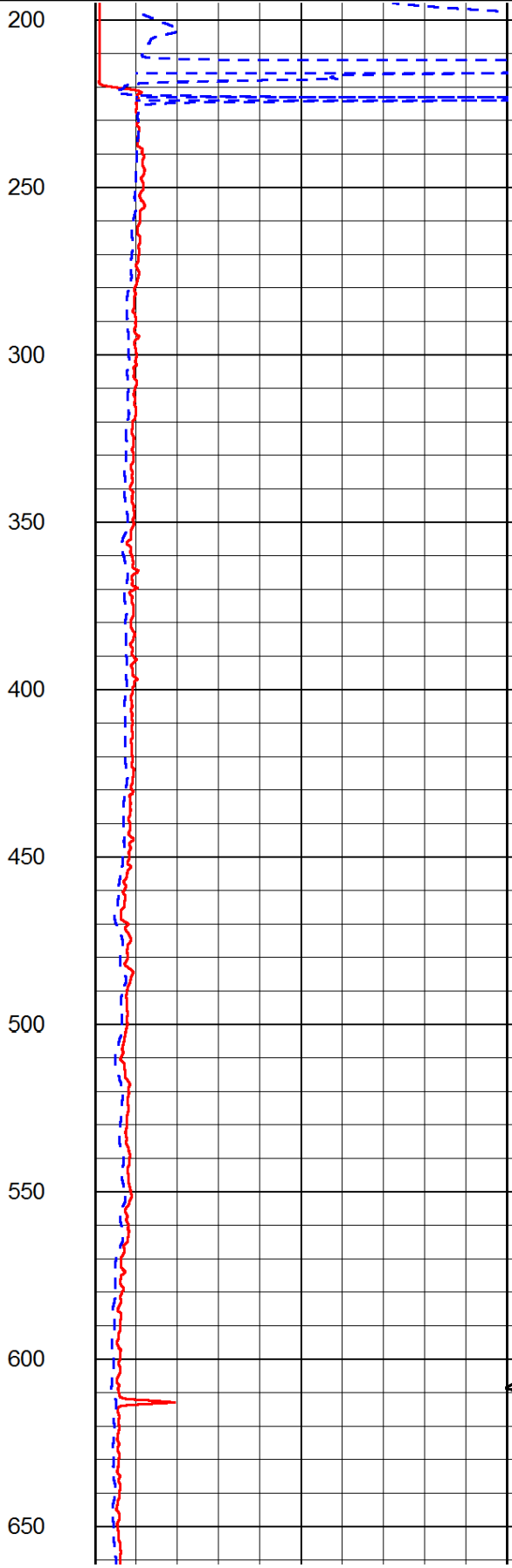
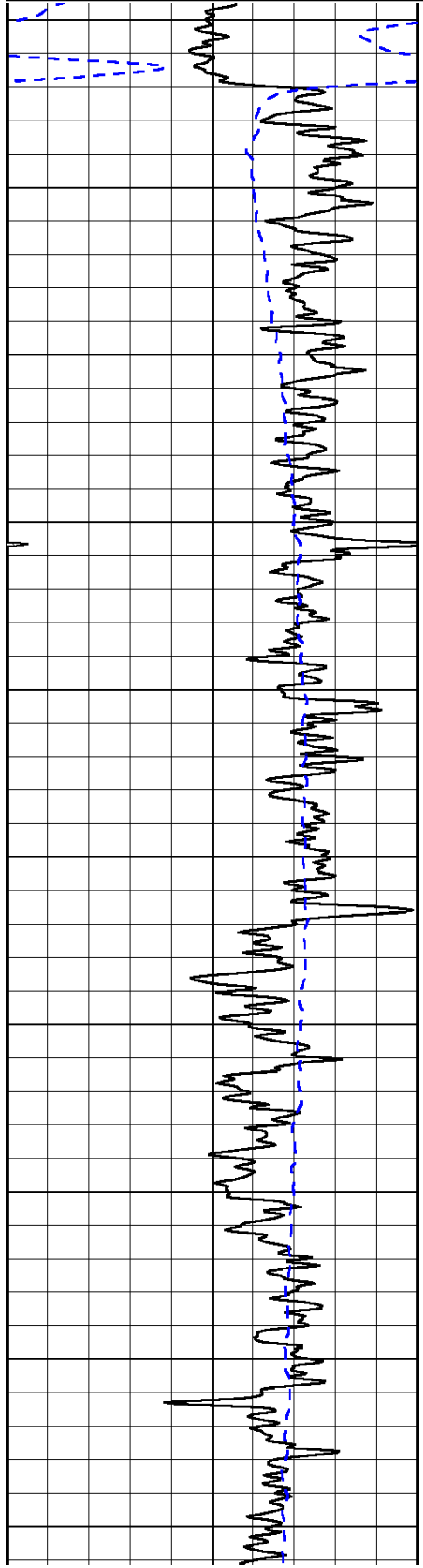
0	Gamma Ray	150
-200	SP (mV)	0

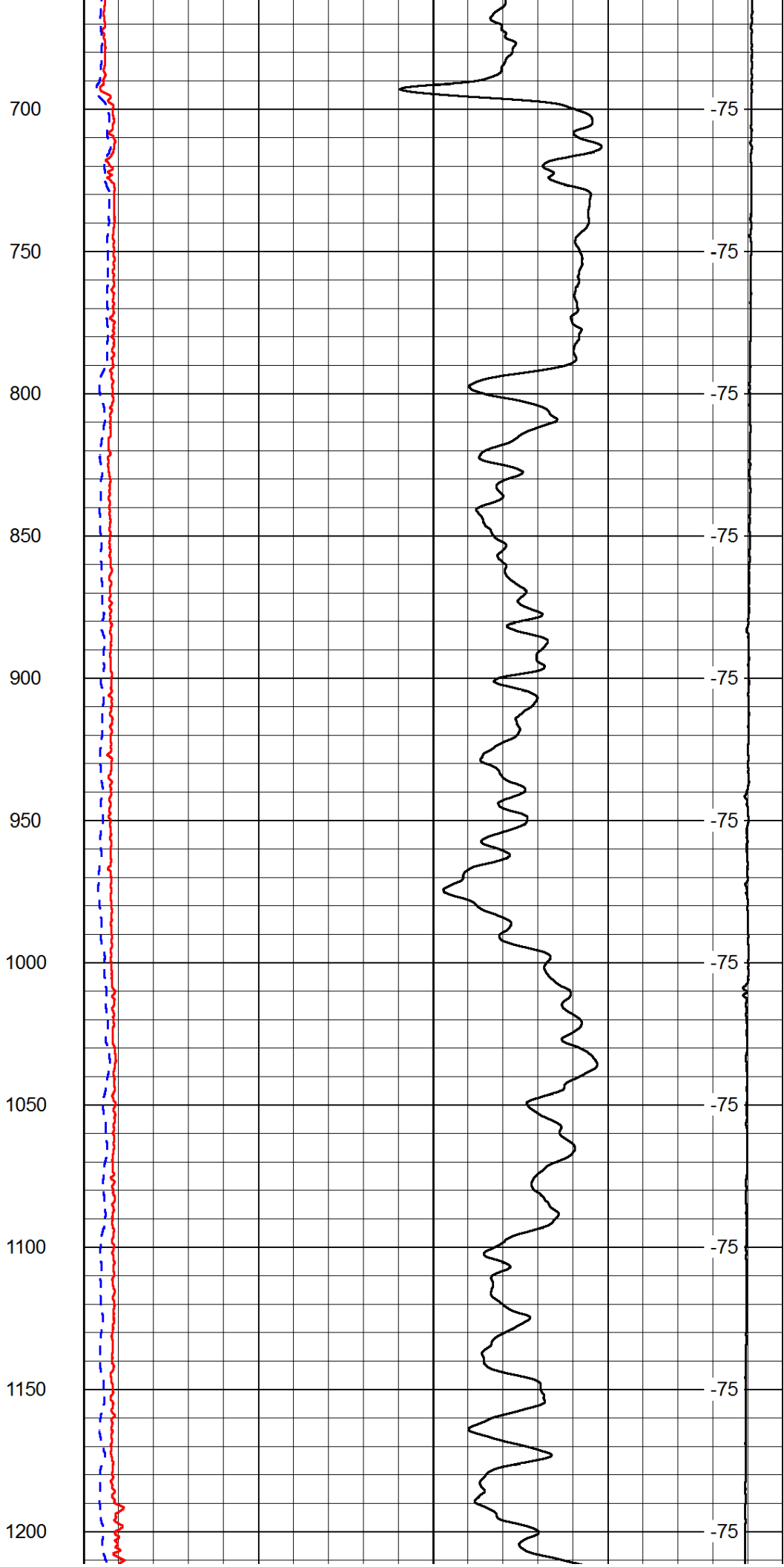
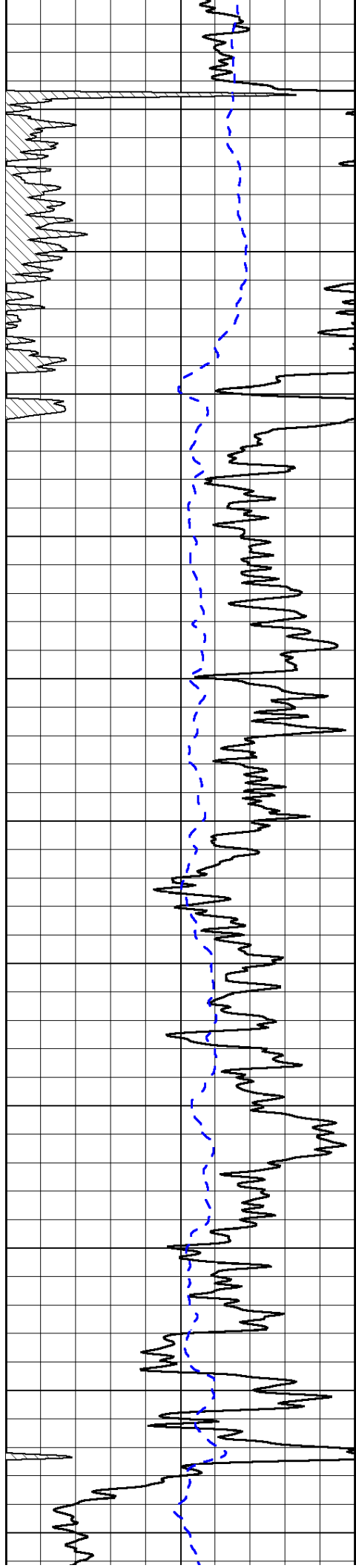
0	Shallow Resistivity	50
0	Deep Resistivity	50

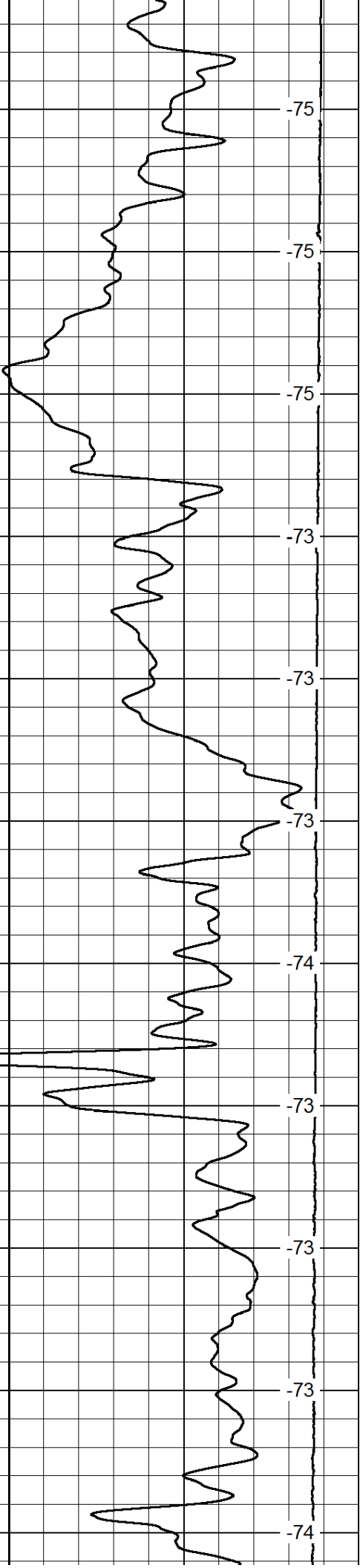
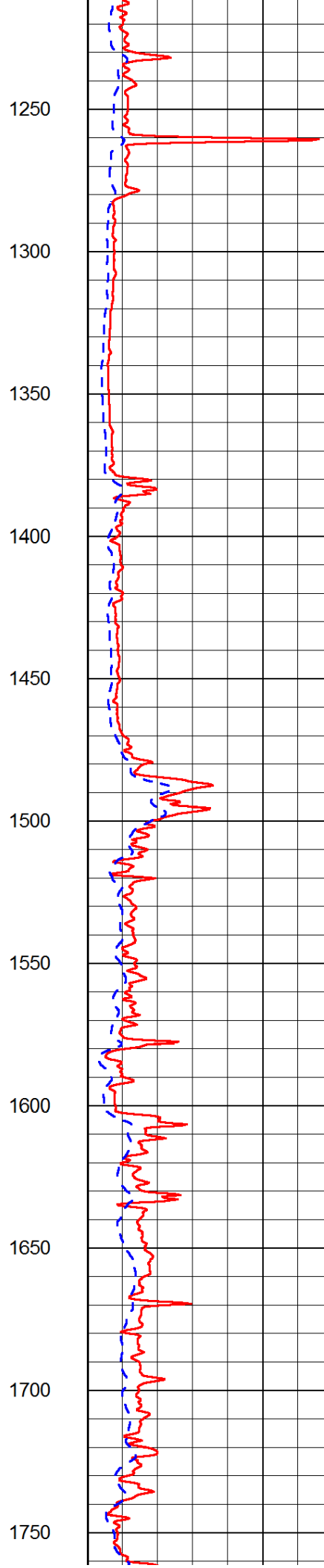
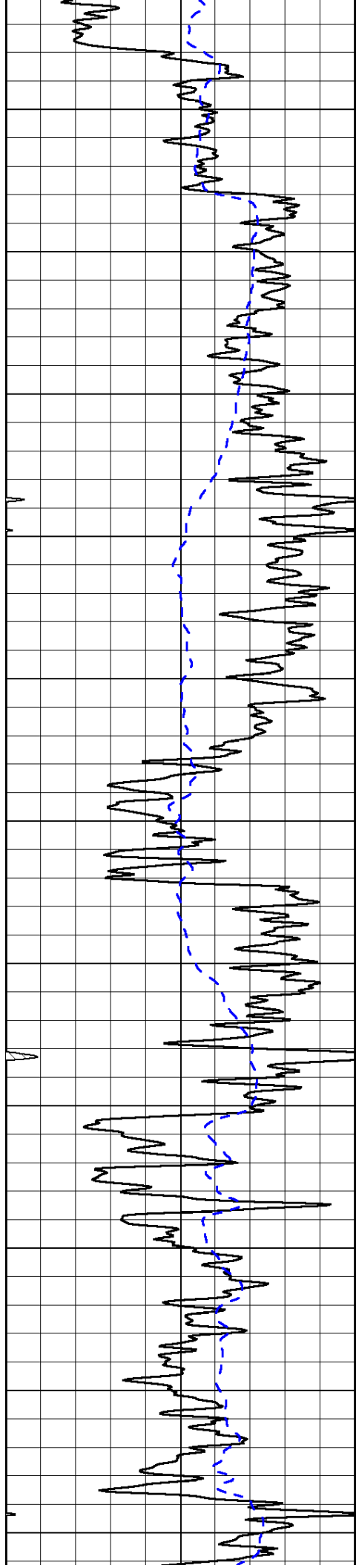
LSPD

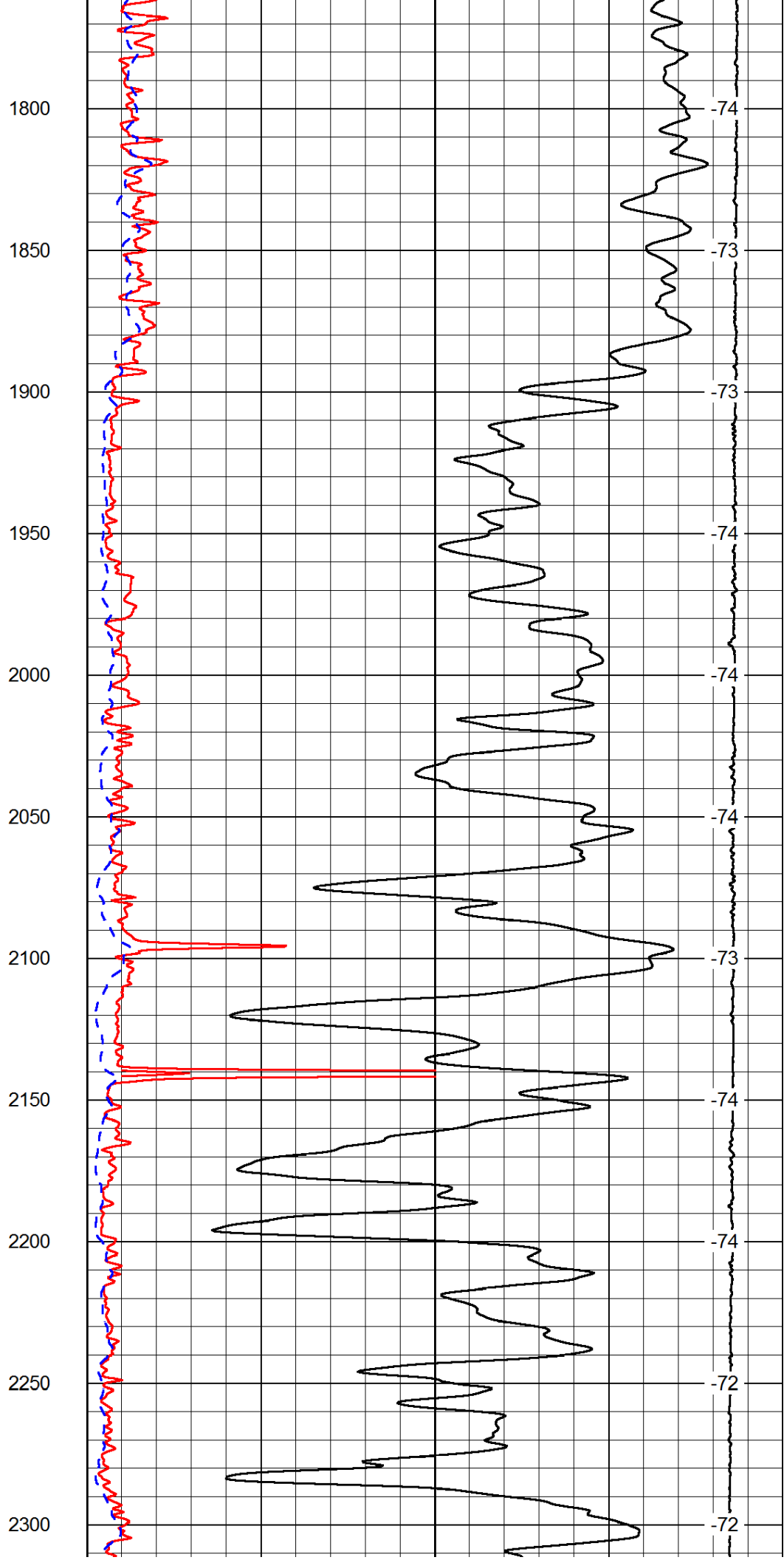
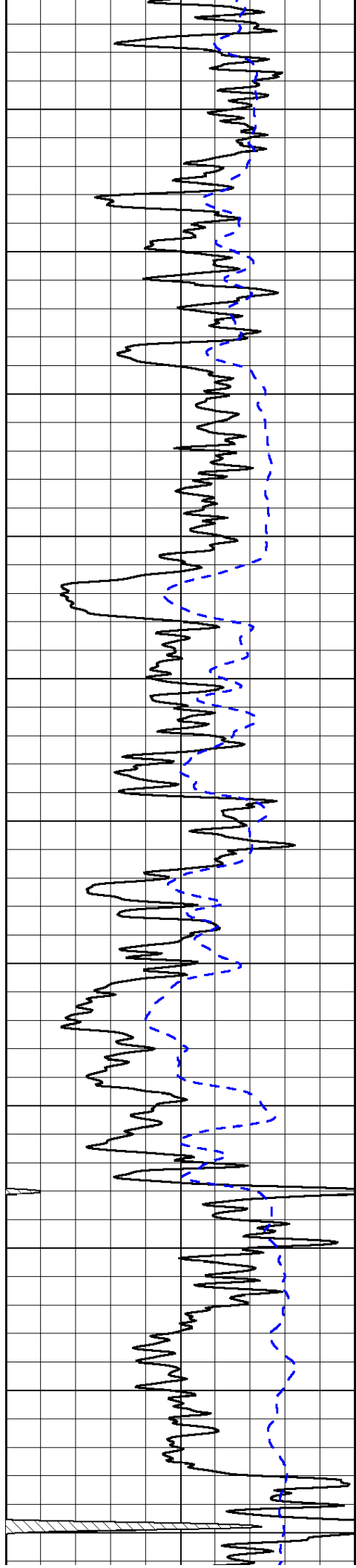
1000	Conductivity	0
15000	Line Tension	0

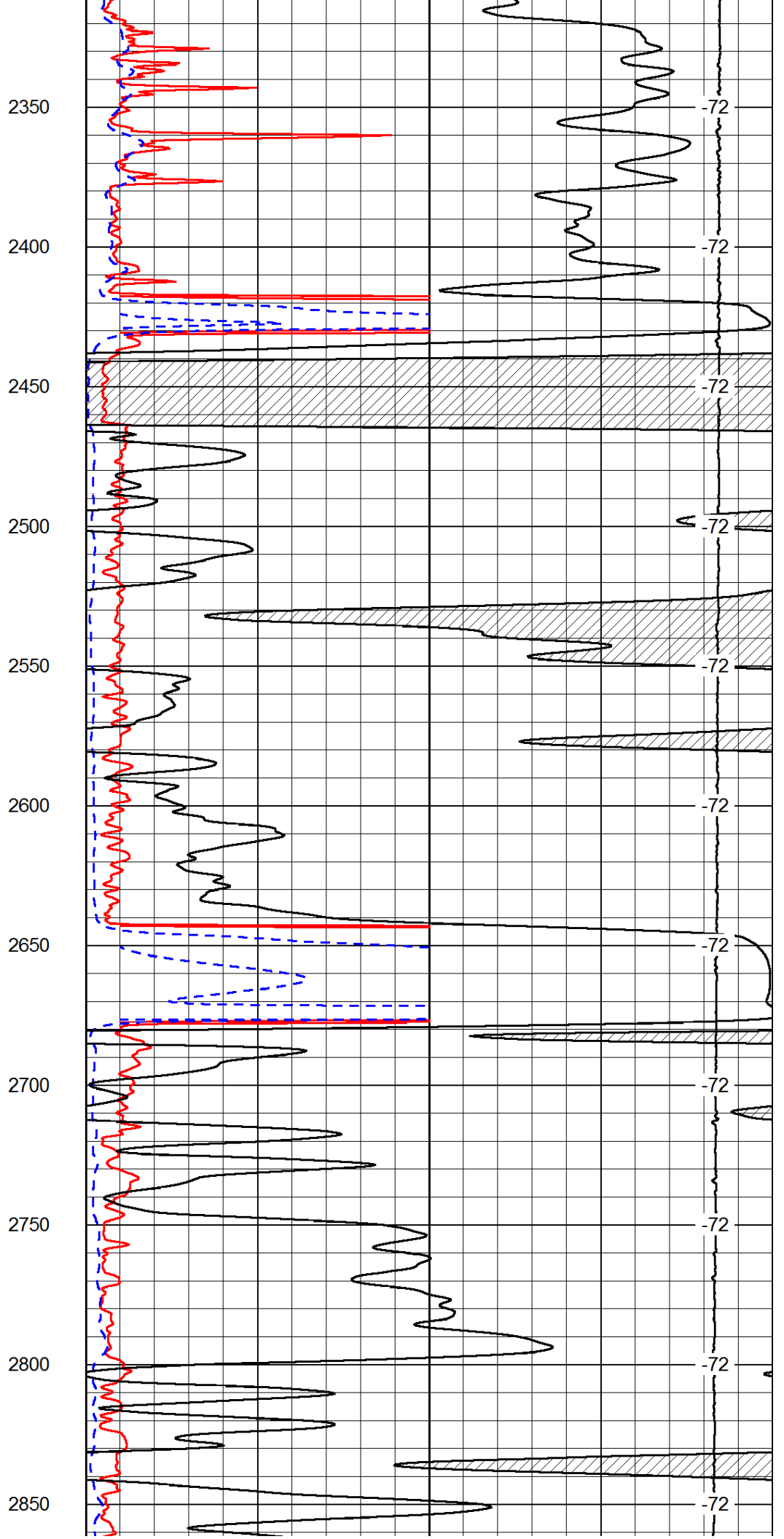
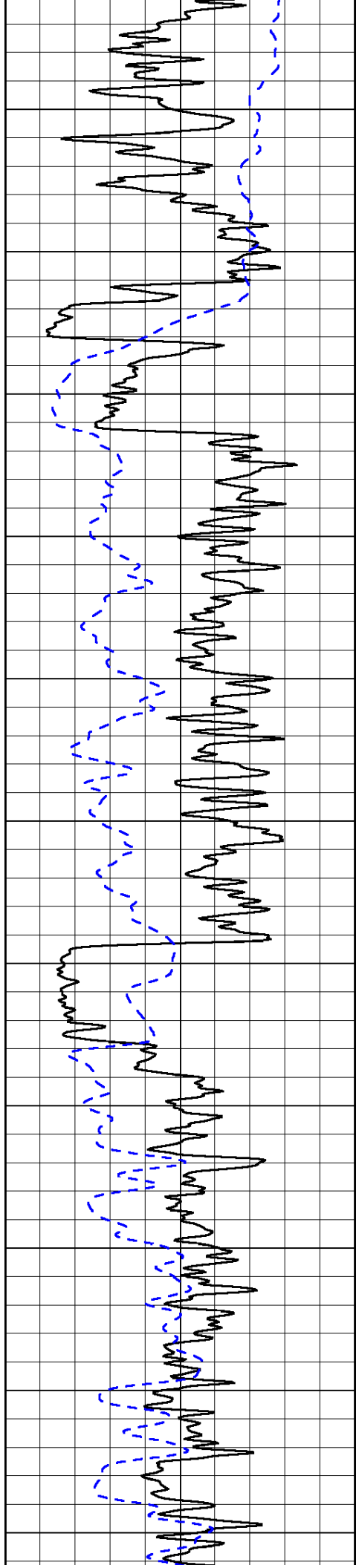
50	Shallow Resistivity	500
50	Deep Resistivity	500

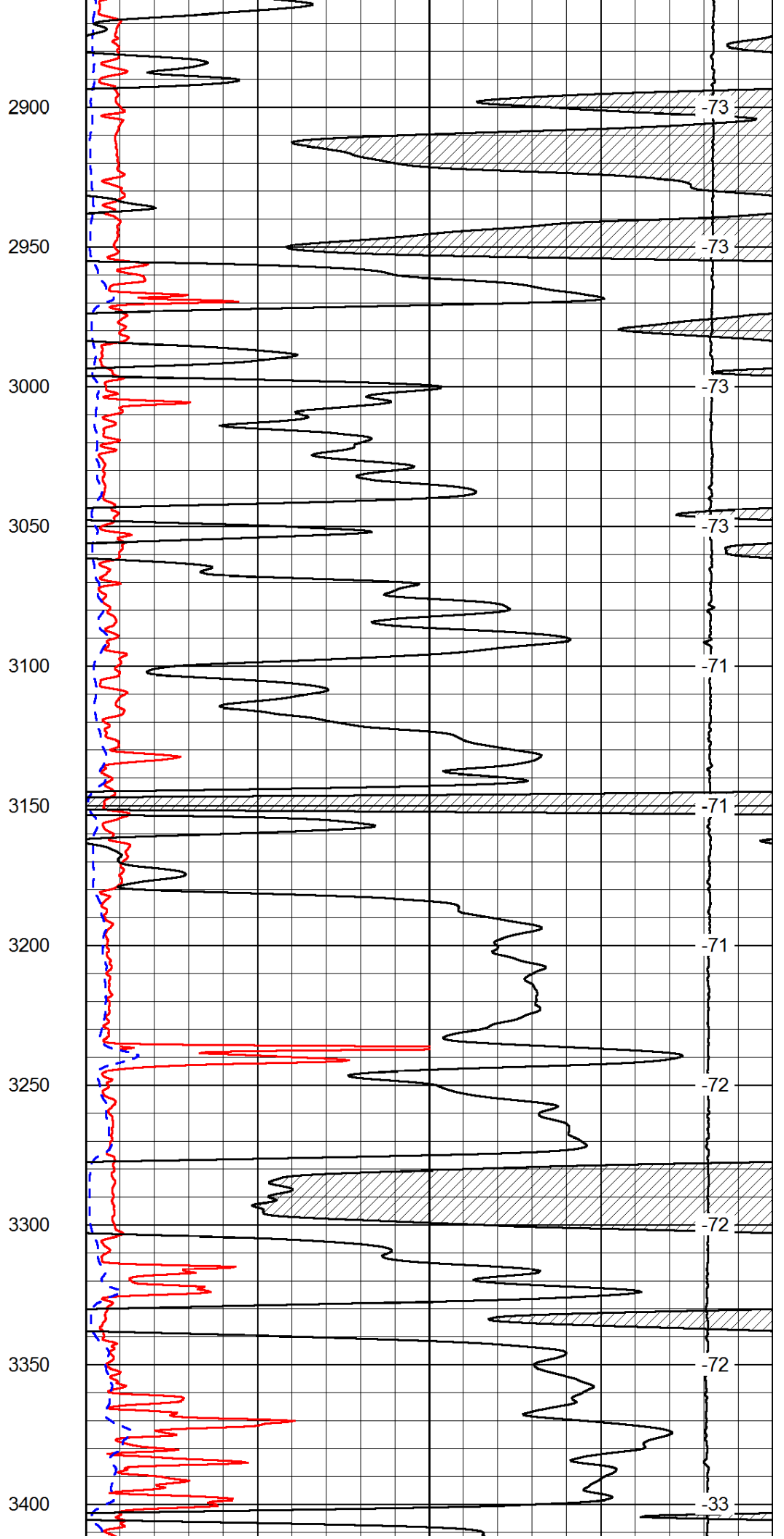
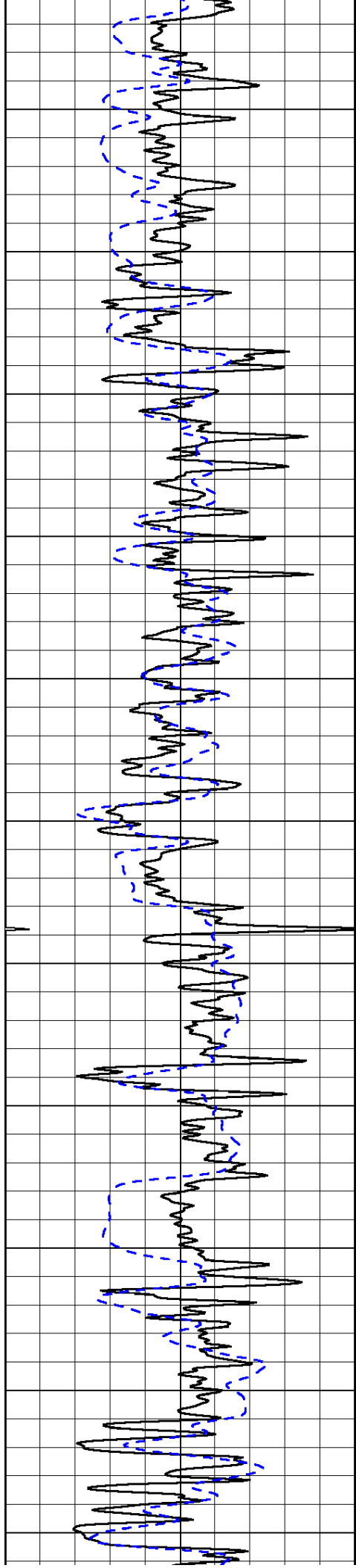


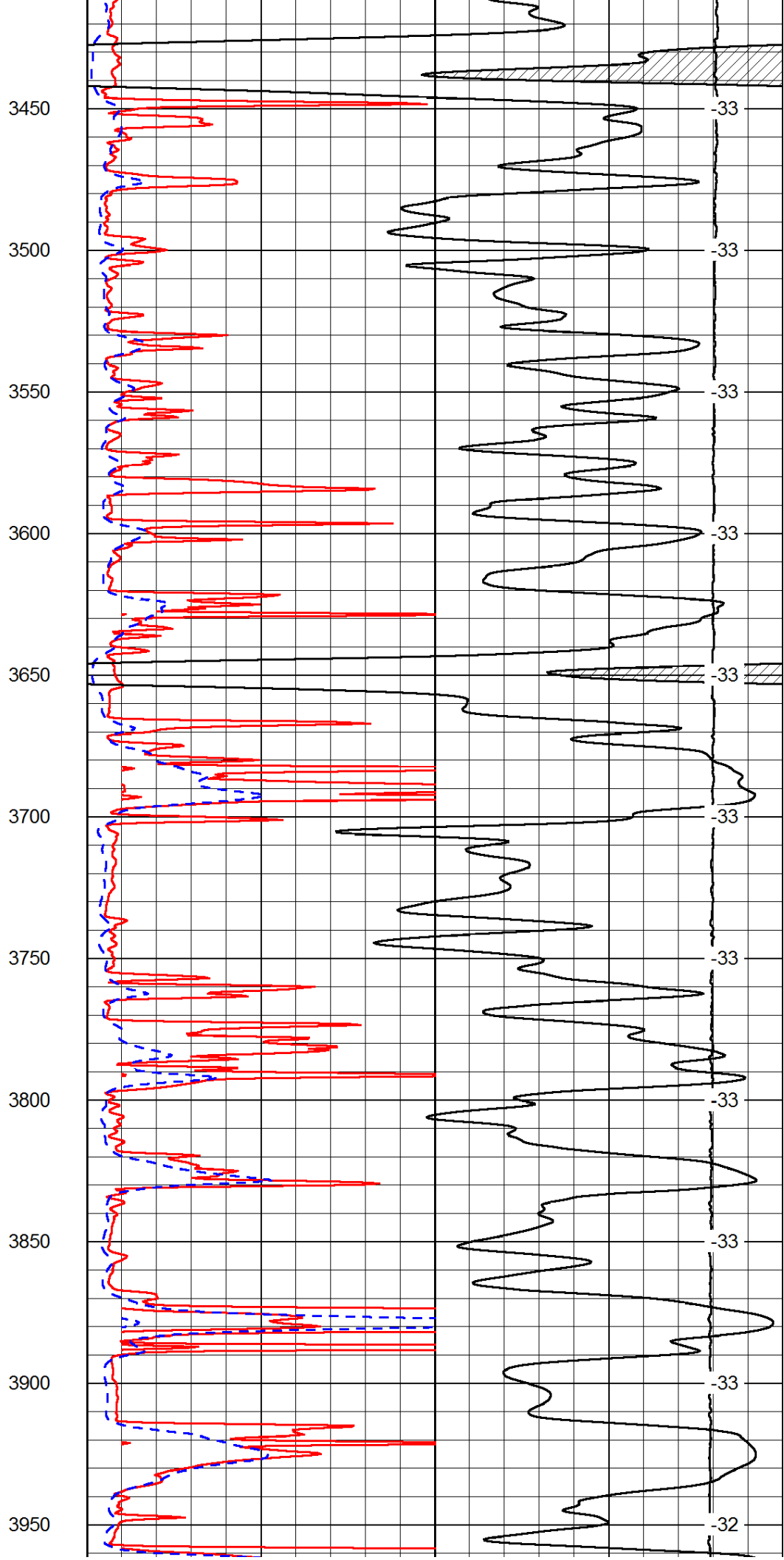
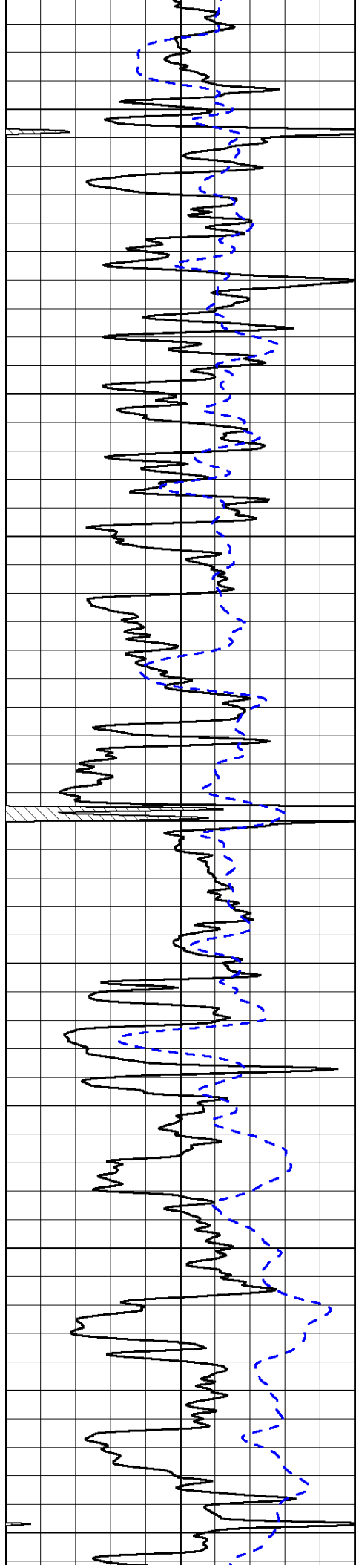


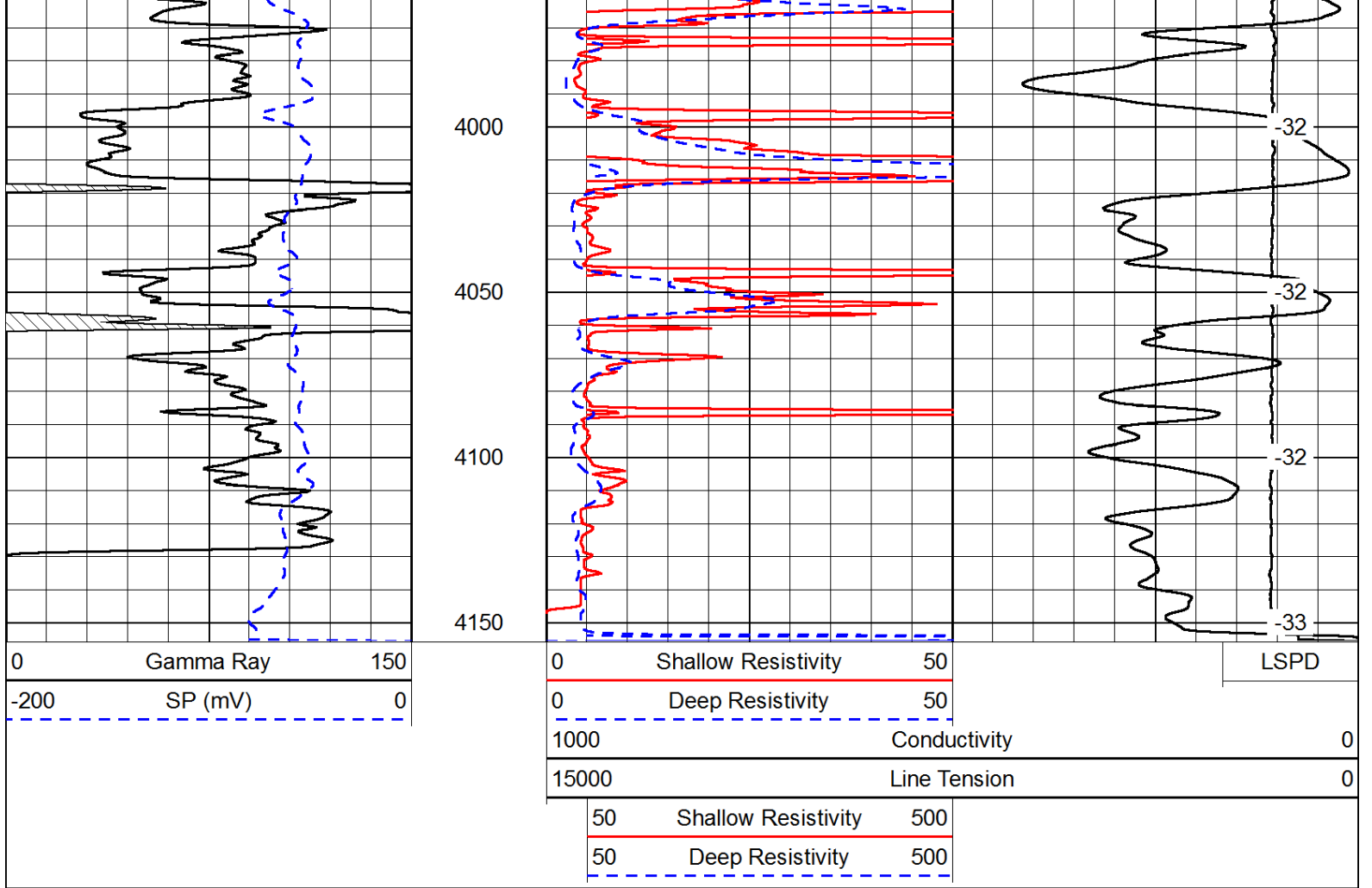




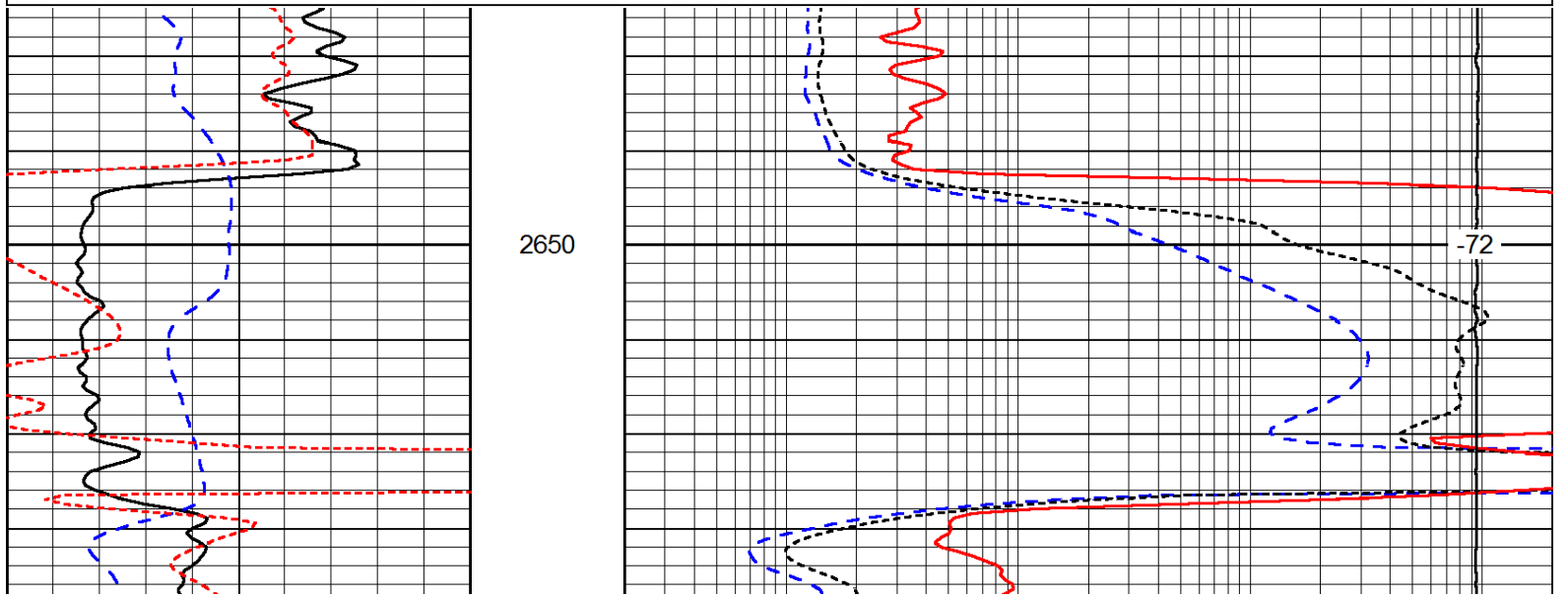
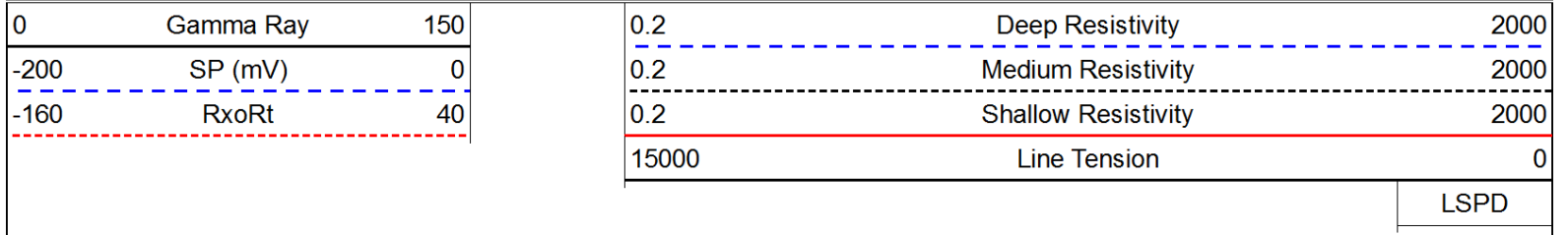


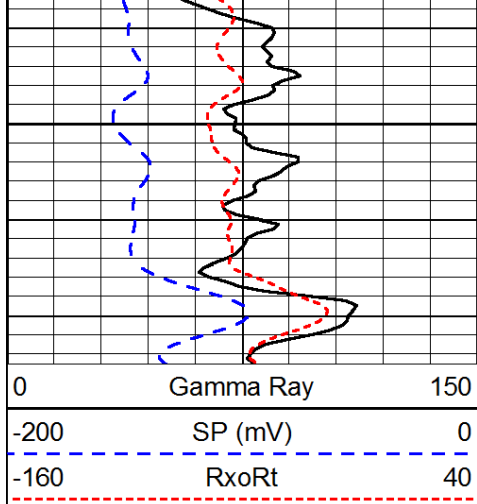




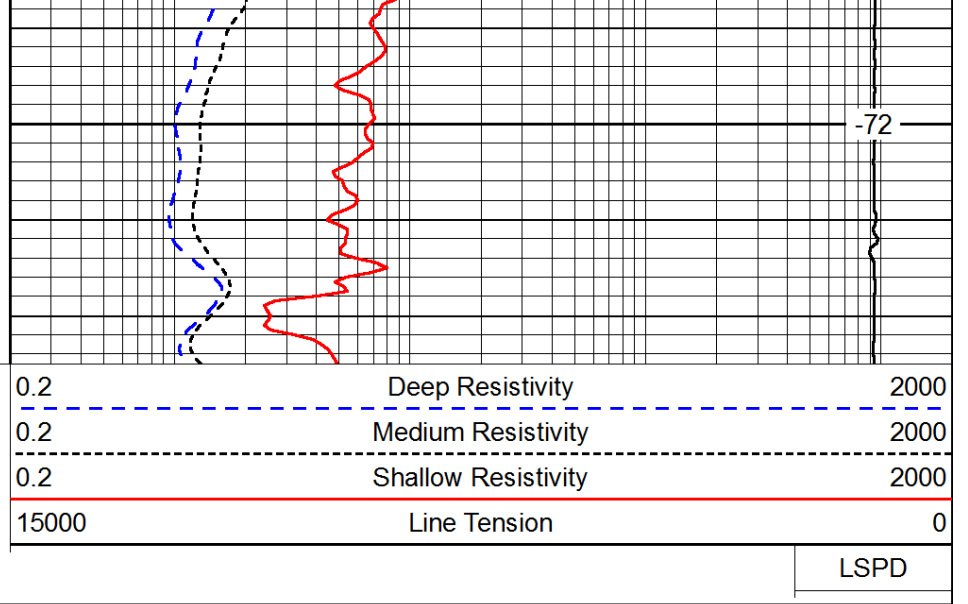


Database File: c:\warrior\data\forestar_k&k # 2-31\forestar_k_k_2_31hd.db
 Dataset Pathname: DIL/forestk
 Presentation Format: dil
 Dataset Creation: Thu May 15 00:18:08 2014
 Charted by: Depth in Feet scaled 1:240

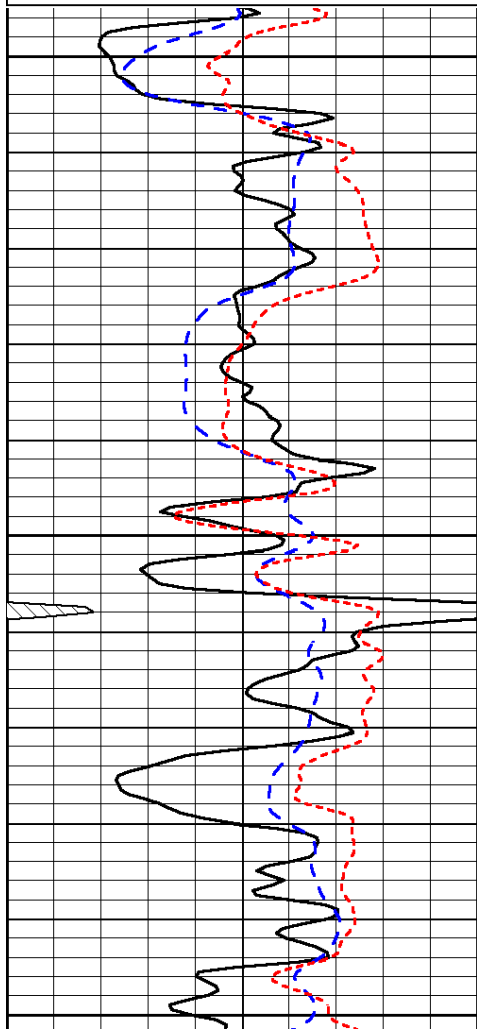
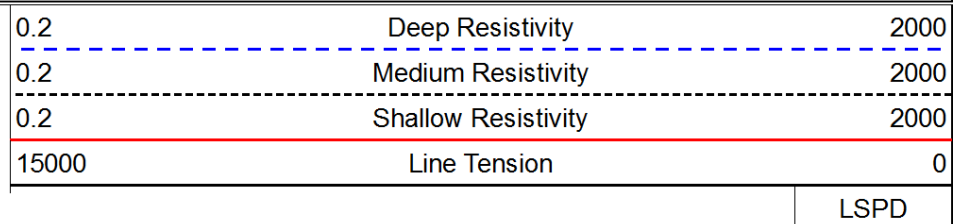
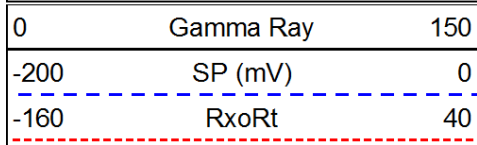




2700



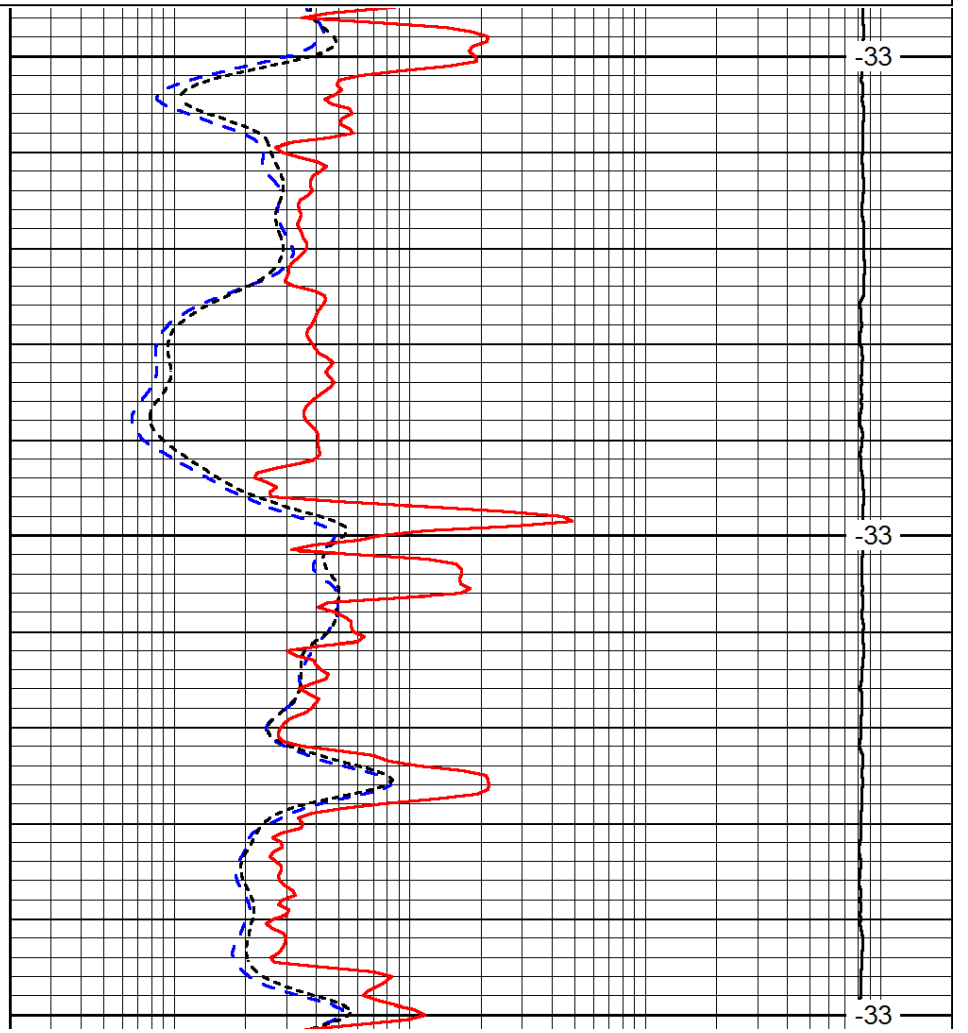
Database File: c:\warrior\data\forestar_k&k # 2-31\forestar_k_k_2_31hd.db
 Dataset Pathname: DIL/forestk
 Presentation Format: dil
 Dataset Creation: Thu May 15 00:18:08 2014
 Charted by: Depth in Feet scaled 1:240

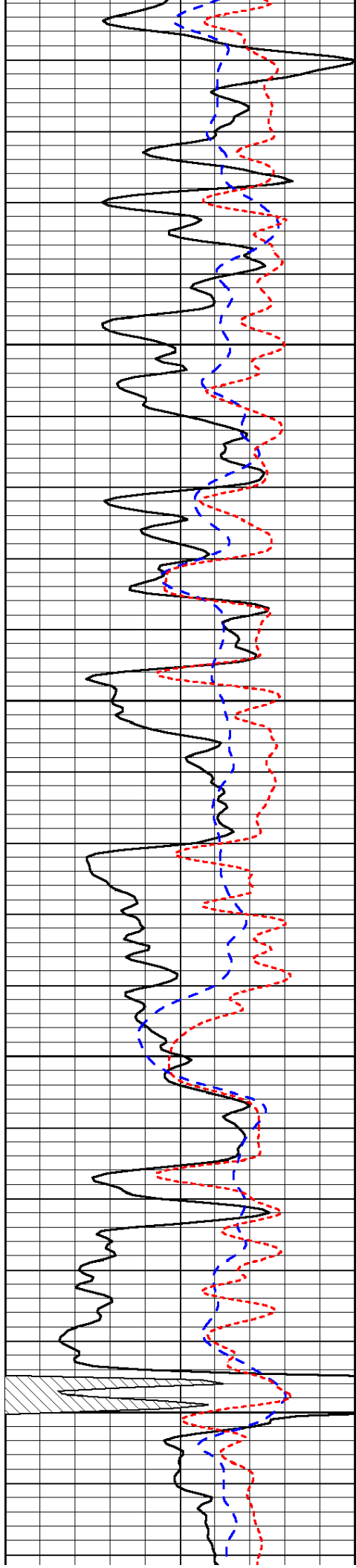


3400

3450

3500



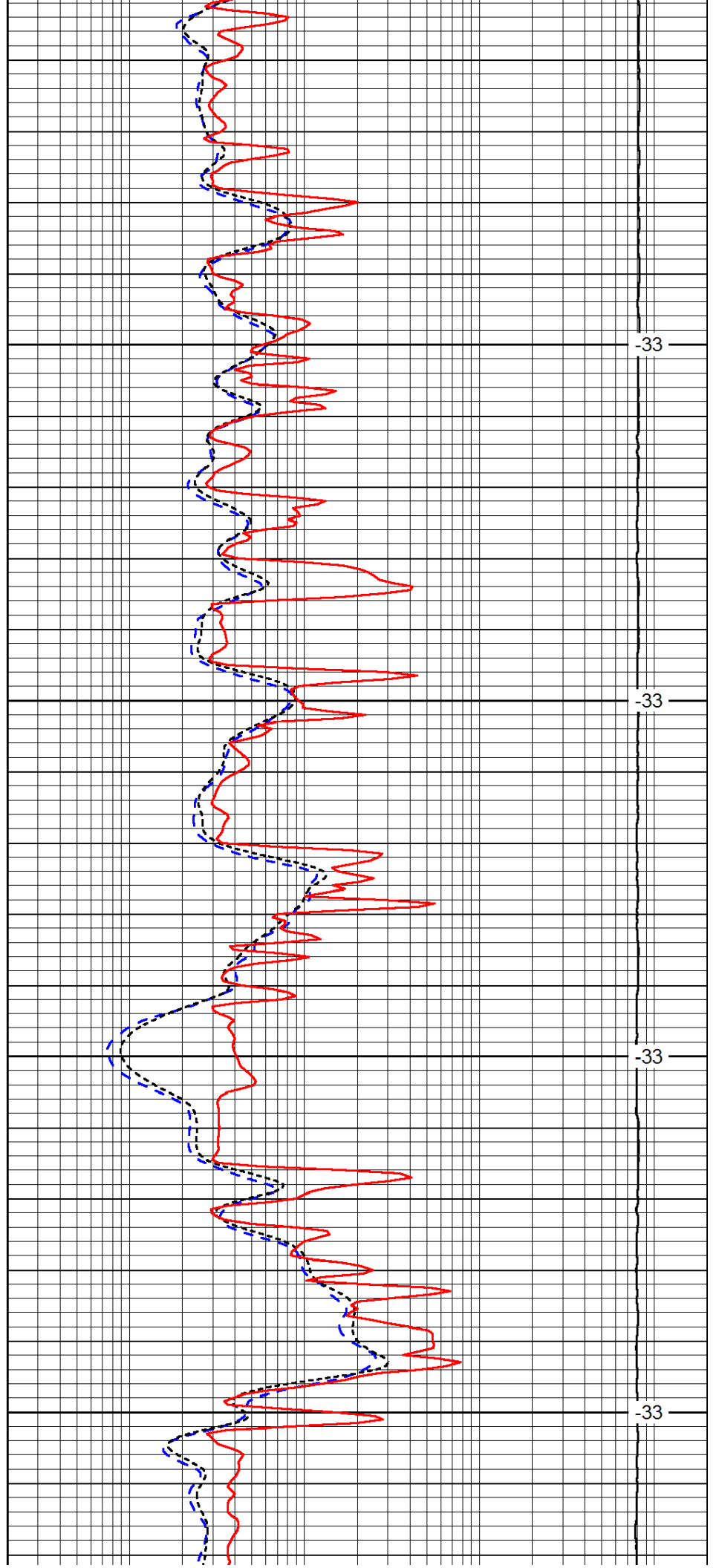


3550

3600

3650

3700

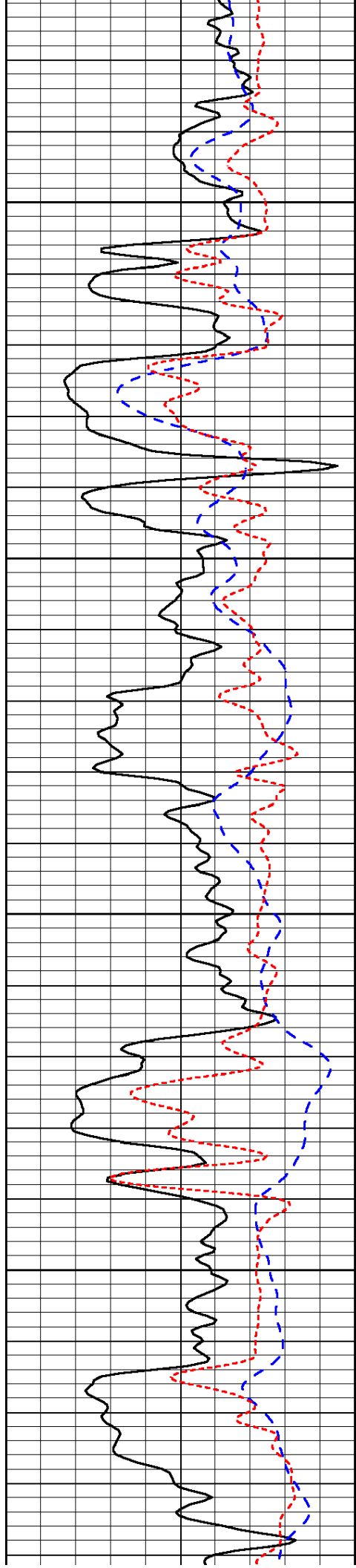


-33

-33

-33

-33

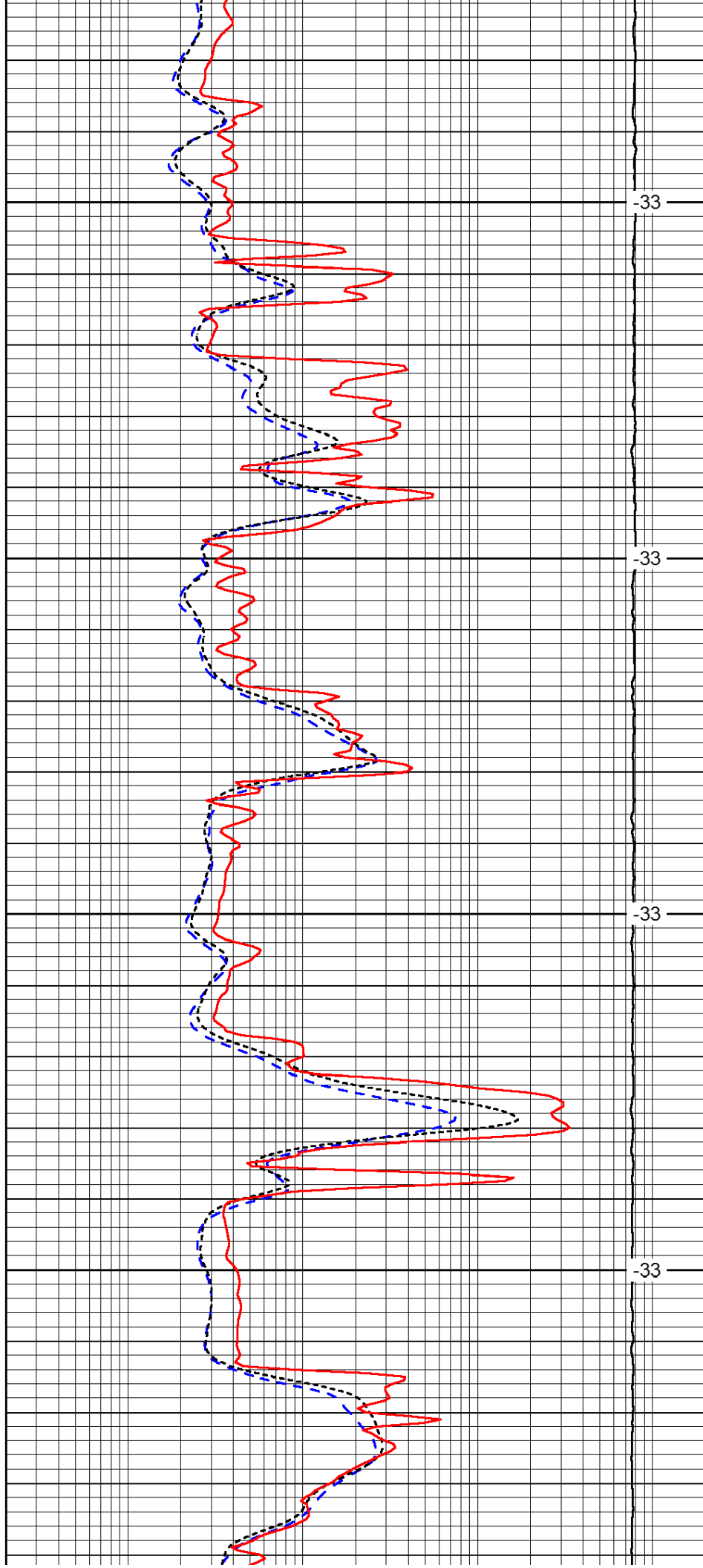


3750

3800

3850

3900

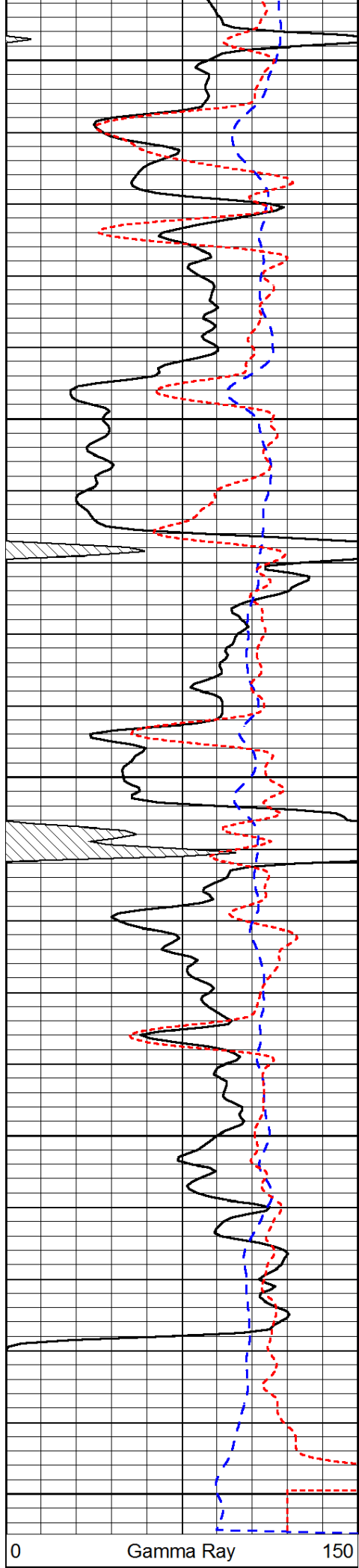


-33

-33

-33

-33



3950

4000

4050

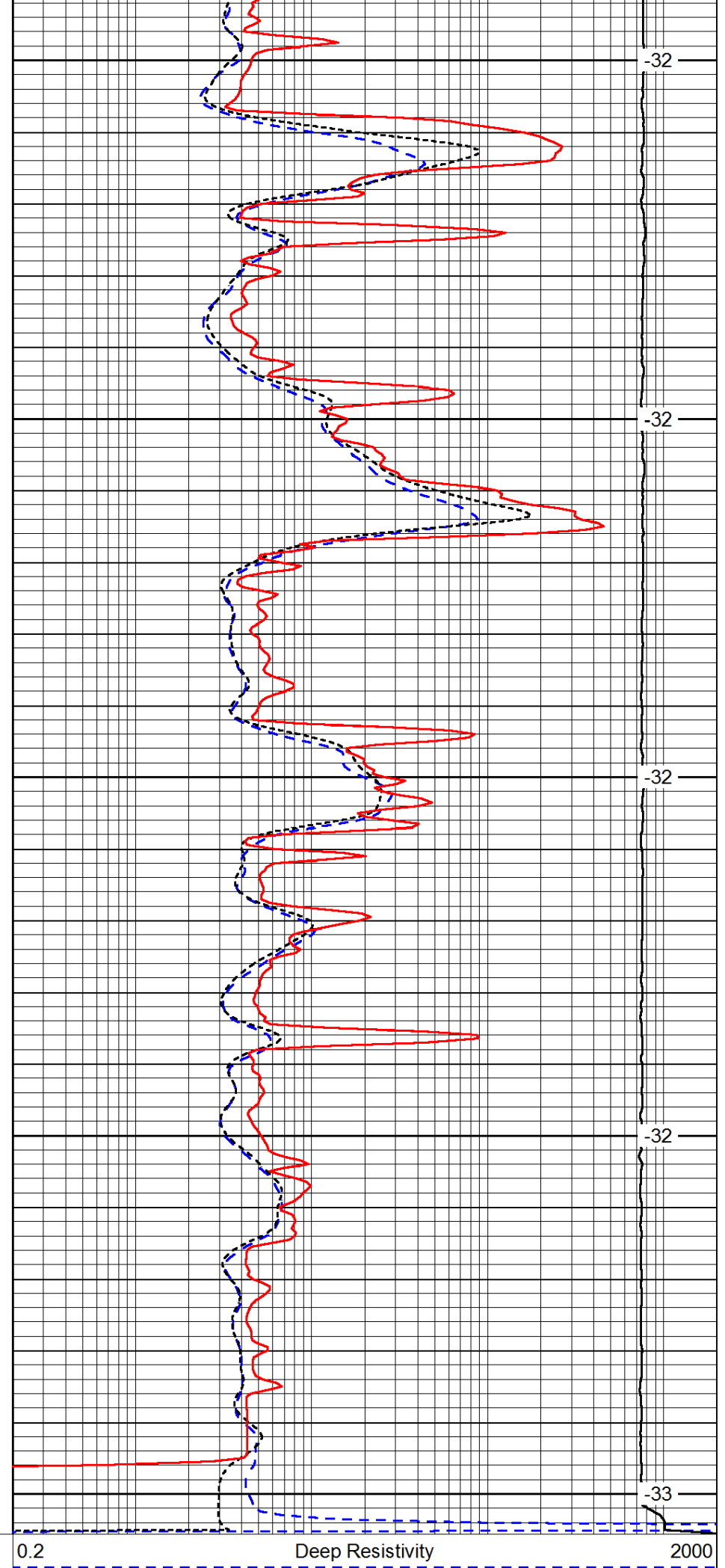
4100

4150

Gamma Ray

0

150



-32

-32

-32

-32

-33

Deep Resistivity

0.2

2000

-200	SP (mV)	0
-160	RxoRt	40

0.2	Medium Resistivity	2000
0.2	Shallow Resistivity	2000
15000	Line Tension	0
		LSPD