



Pioneer Energy Services

Microresistivity Log

Company Black Tea Oil, LLC
Well DFK 1 No.1
Field
County Logan **State** Kansas
Location NE-NW-SE-NW
 1605' FNL & 1745' FWL
Sec: 2 **Twp:** 15S **Rge:** 32W

Other Services
 CNL/CDL
 DIL/BHCS

Permanent Datum Ground Level Elevation 2669
 Log Measured From Kelly Bushing 9 Ft. Above Perm. Datum
 Drilling Measured From Kelly Bushing
 K.B. 2678
 D.F. G.I.L. 2669

| | |
|------------------------|---------------------|
| API No. | 15-109-21,304-00-00 |
| Date | 6/22/14 |
| Run Number | Two |
| Depth Driller | 4400 |
| Depth Logger | 4400 |
| Bottom Logged Interval | 4399 |
| Top Log Interval | 3000 |
| Casing Driller | 8.625 @ 264 |
| Casing Logger | 262 |
| Bit Size | 7.875 |
| Type Fluid in Hole | Chemical |
| Salinity, ppm CL | 4.000 |
| Density / Viscosity | 9.1 52 |
| pH / Fluid Loss | 10.0 7.2 |
| Source of Sample | Flowline |
| Rm @ Meas. Temp | .50 @ 86 |
| Rmf @ Meas. Temp | .38 @ 86 |
| Rmc @ Meas. Temp | .68 @ 86 |
| Source of Rmf / Rmc | Charts |
| Rm @ BHT | .36 @ 120 |
| Operating Rig Time | 5 Hours |
| Max Rec. Temp. F | 120 |
| Equipment Number | 108 |
| Location | Hays |
| Recorded By | J. Henrickson |
| Witnessed By | Kevin Bailey |

<<< Fold Here >>>

All interpretations are opinions based on inferences from electrical or other measurements and we cannot and do not guarantee the accuracy or correctness of any interpretation, and we shall not, except in the case of gross or willful negligence on our part, be liable or responsible for any loss, costs, damages, or expenses incurred or sustained by anyone resulting from any interpretation made by any of our officers, agents or employees. These interpretations are also subject to our general terms and conditions set out in our current Price Schedule.

Comments

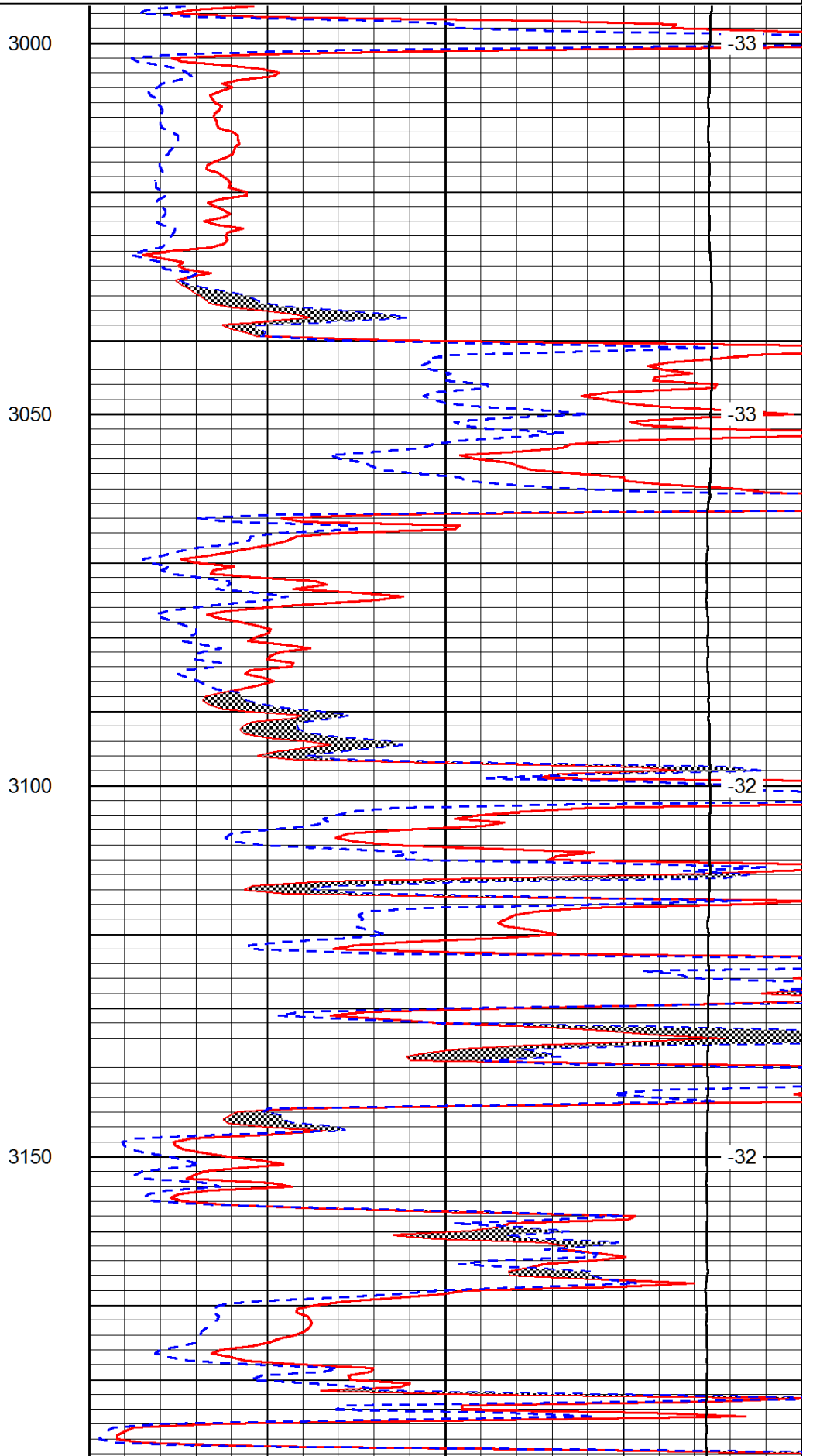
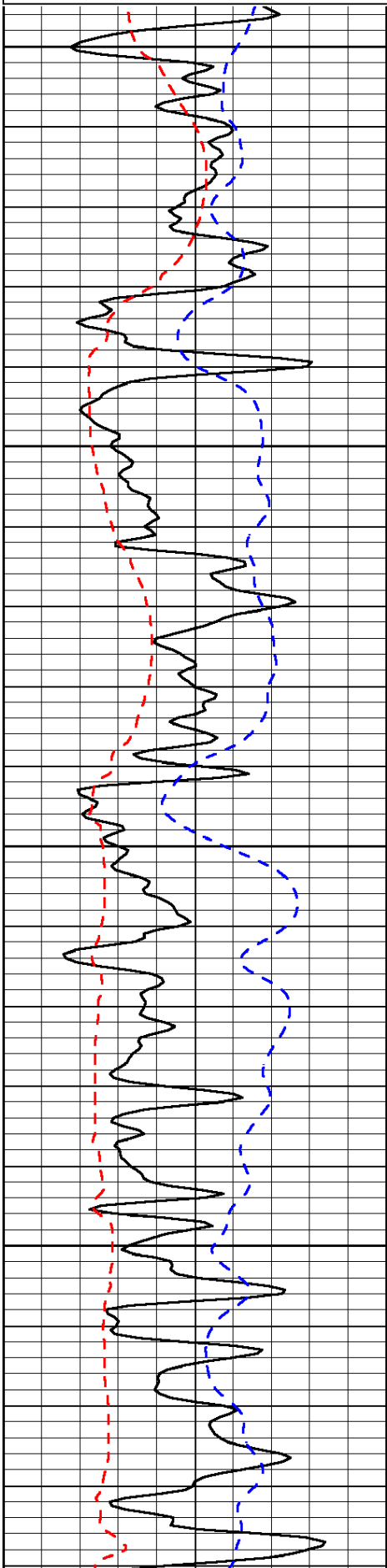
Thank you for using Log-Tech, Inc.
 (785) 625-3858
 Oakley Kansas
 South to Gold Rd, East Into

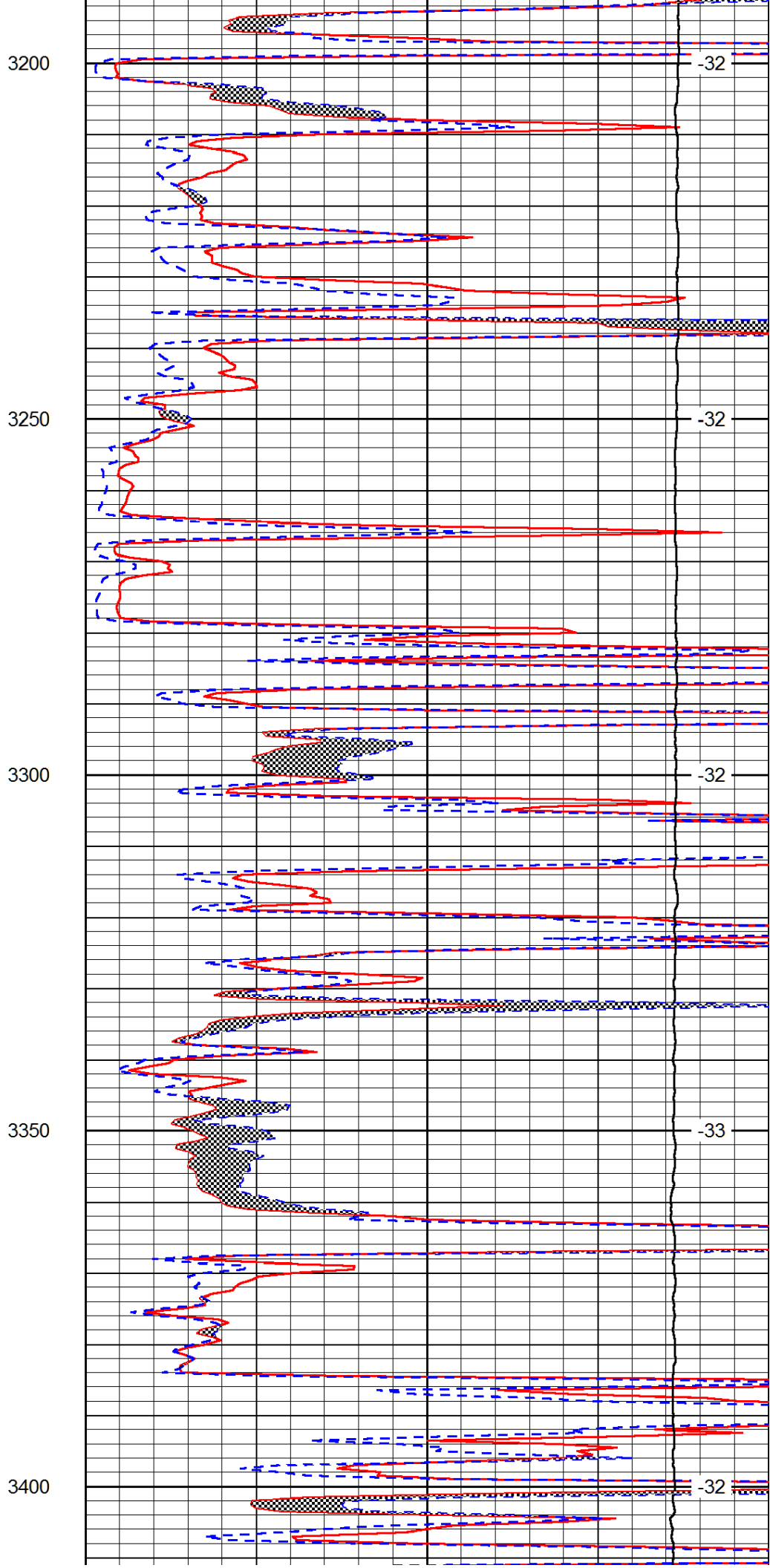
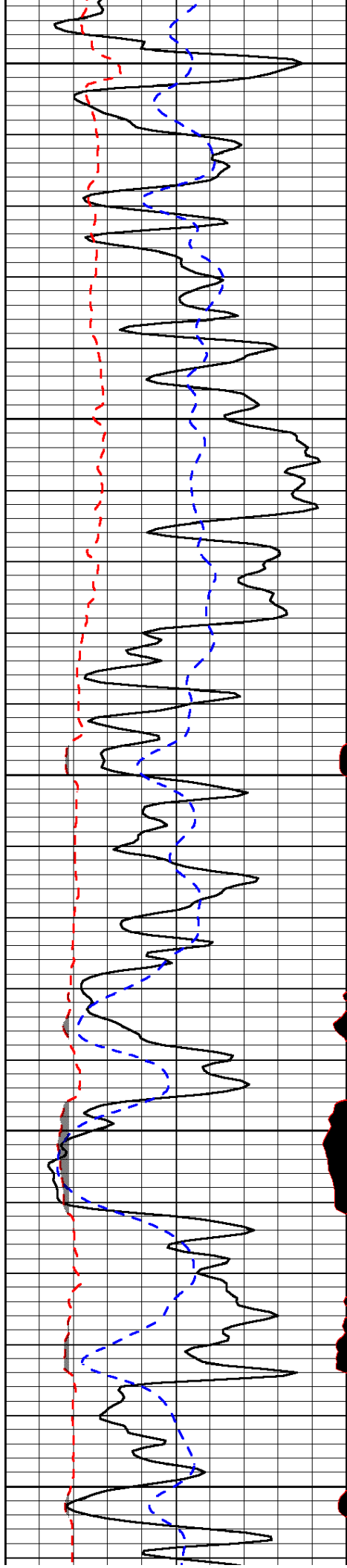
| | |
|----------------------|----------------------------|
| Database File: | blacktea_dfk_1_1hd.db |
| Dataset Pathname: | DIL/bteastk |
| Presentation Format: | micro |
| Dataset Creation: | Sun Jun 22 20:32:53 2014 |
| Charted by: | Depth in Feet scaled 1:240 |

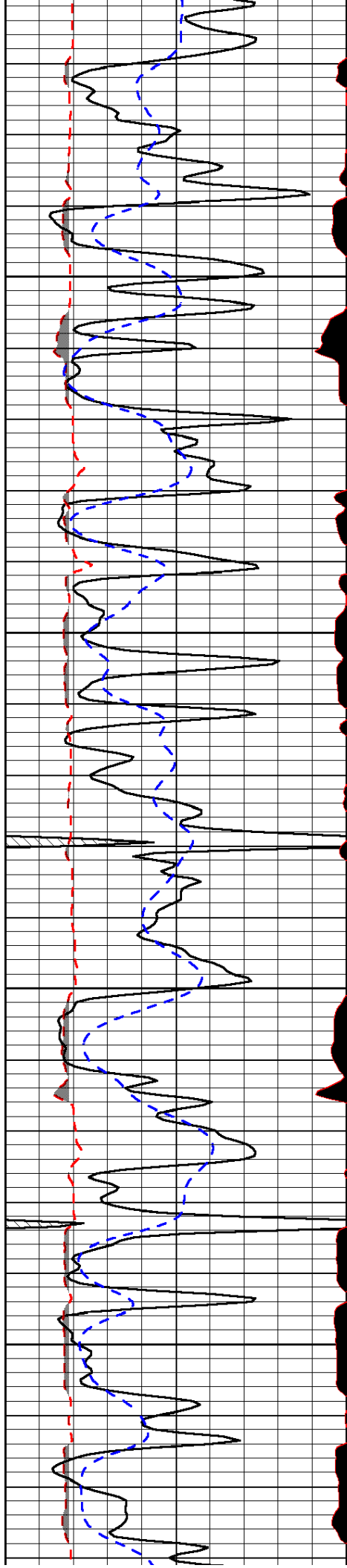
| | | |
|-------|-----------------|-------|
| 0 | Gamma Ray | 150 |
| 6 | MCAL (GAPI) | 16 |
| 2.875 | Mud Cake (GAPI) | 7.875 |
| -200 | SP (mV) | 0 |

| | | |
|-------|---------------------|----|
| 0 | Micro Inverse 1 X 1 | 40 |
| 0 | Micro Normal 2" | 40 |
| 10000 | Line Weight | 0 |

LSPD





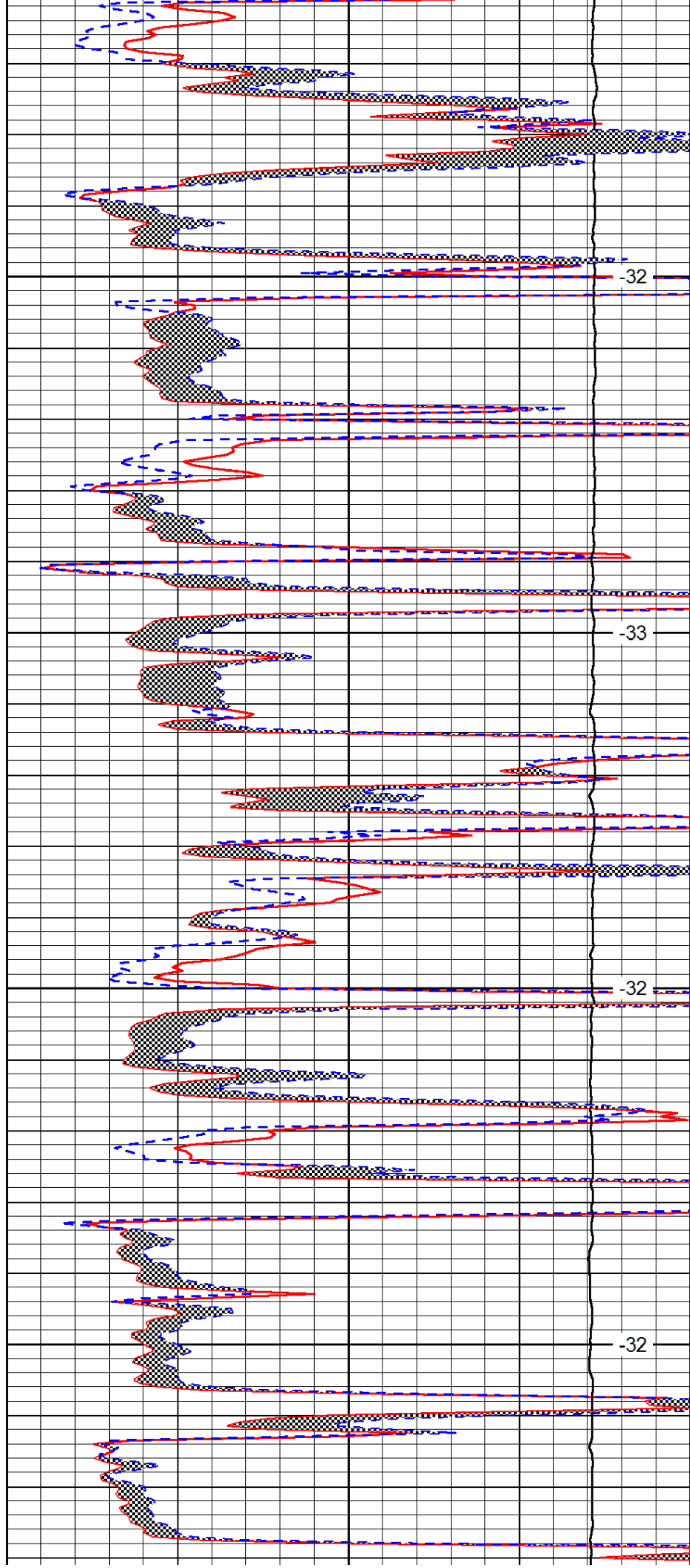


3450

3500

3550

3600

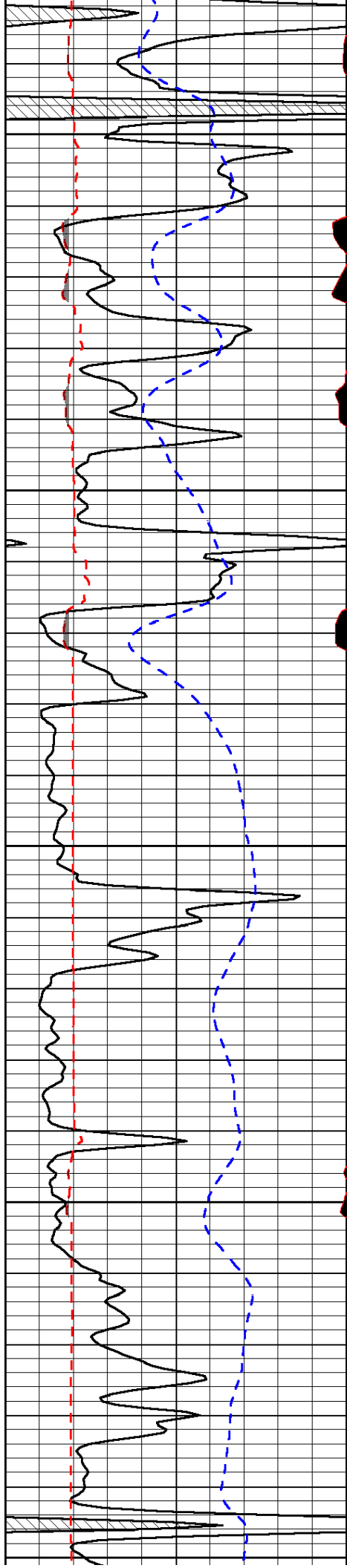


-32

-33

-32

-32



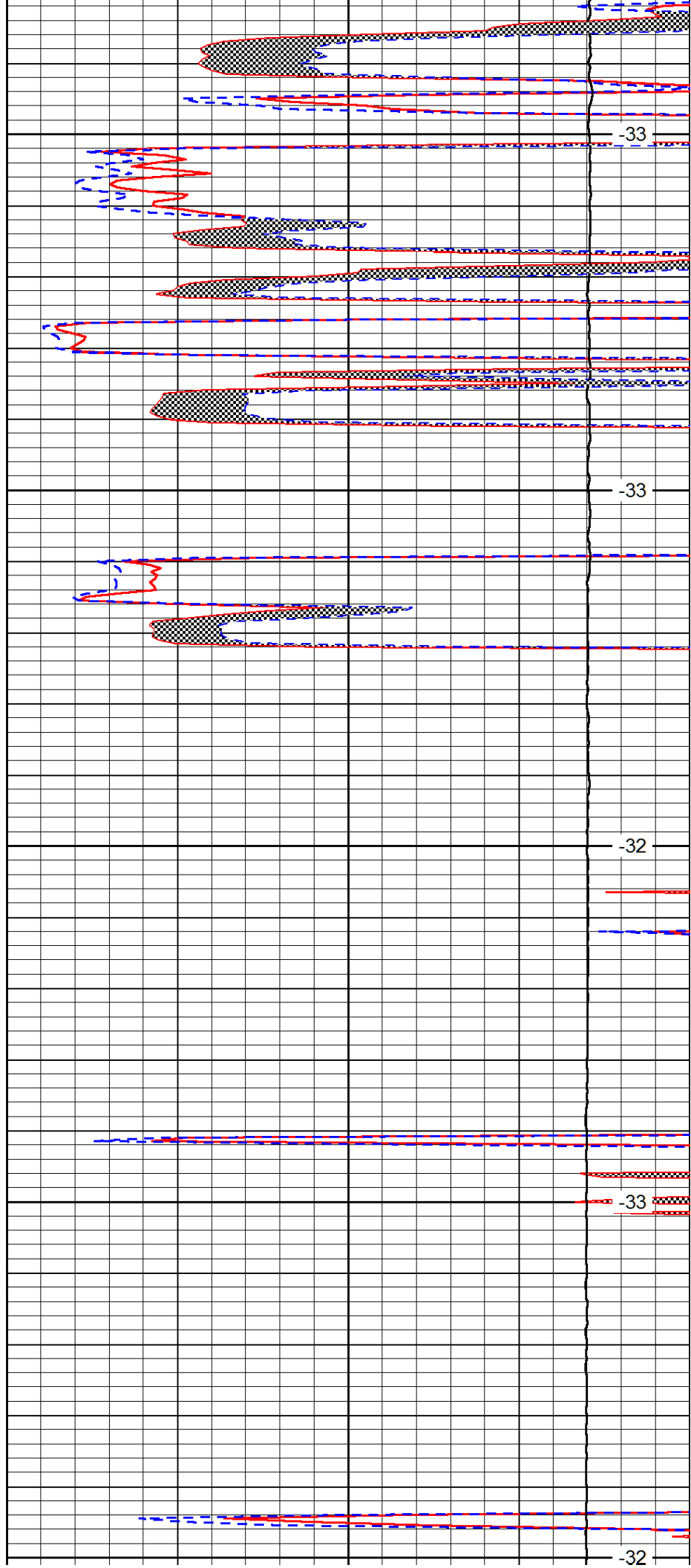
3650

3700

3750

3800

3850



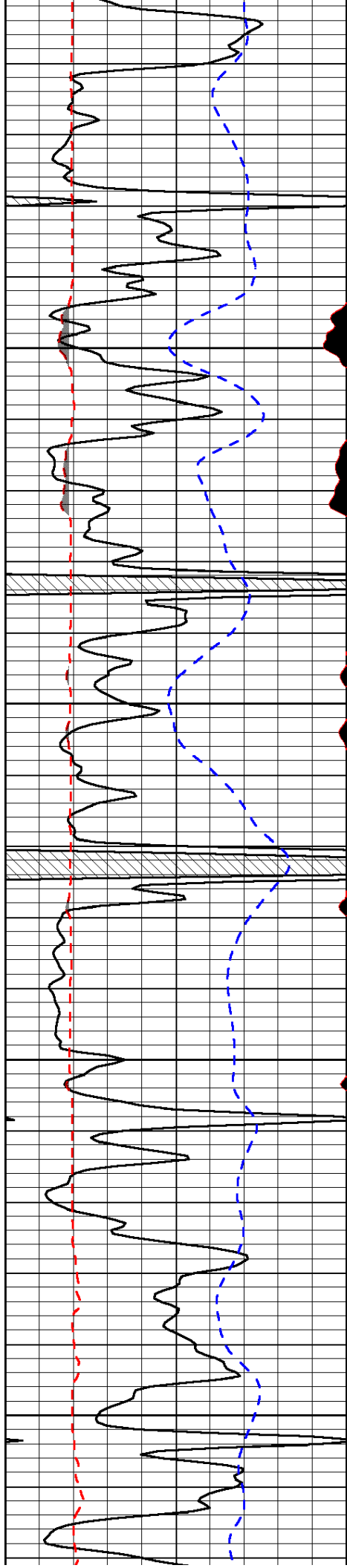
-33

-33

-32

-33

-32

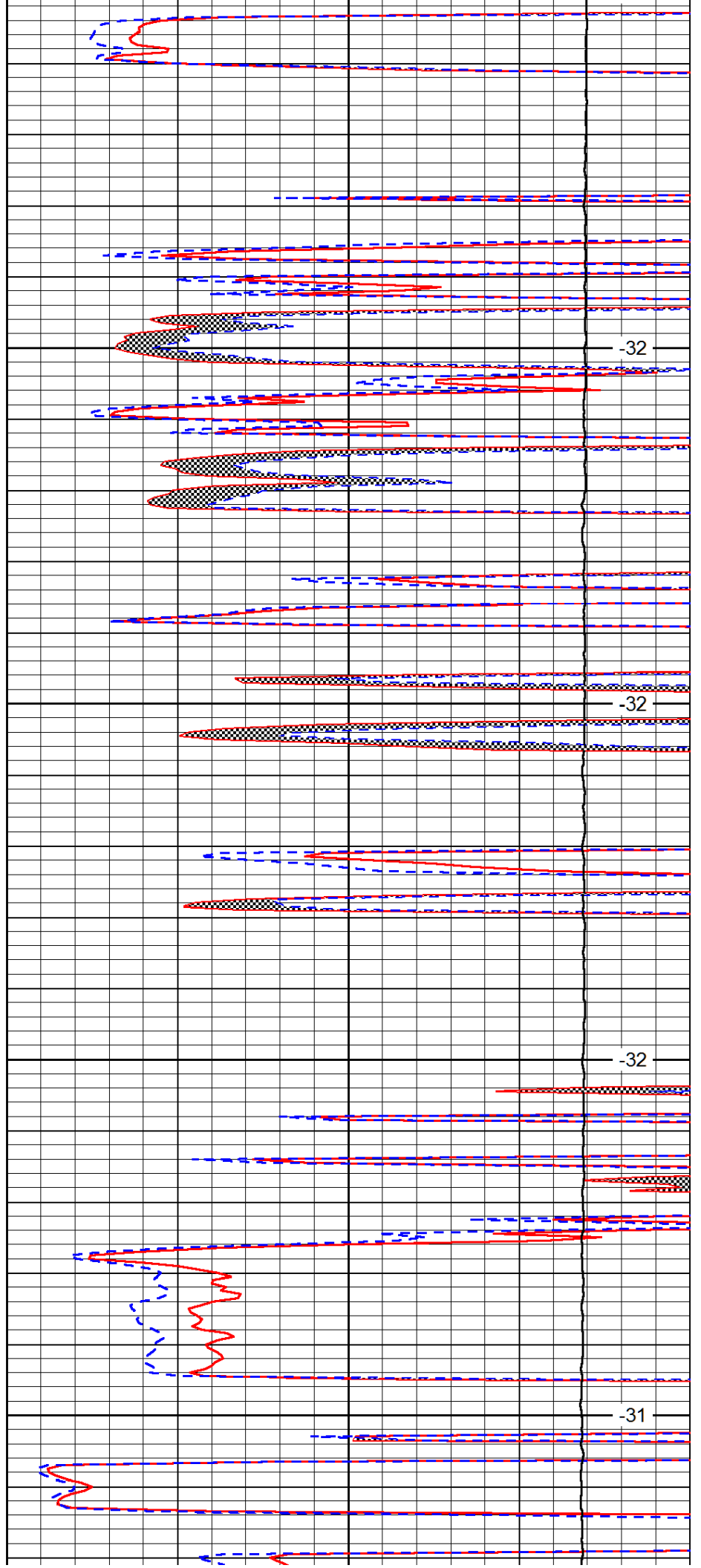


3900

3950

4000

4050

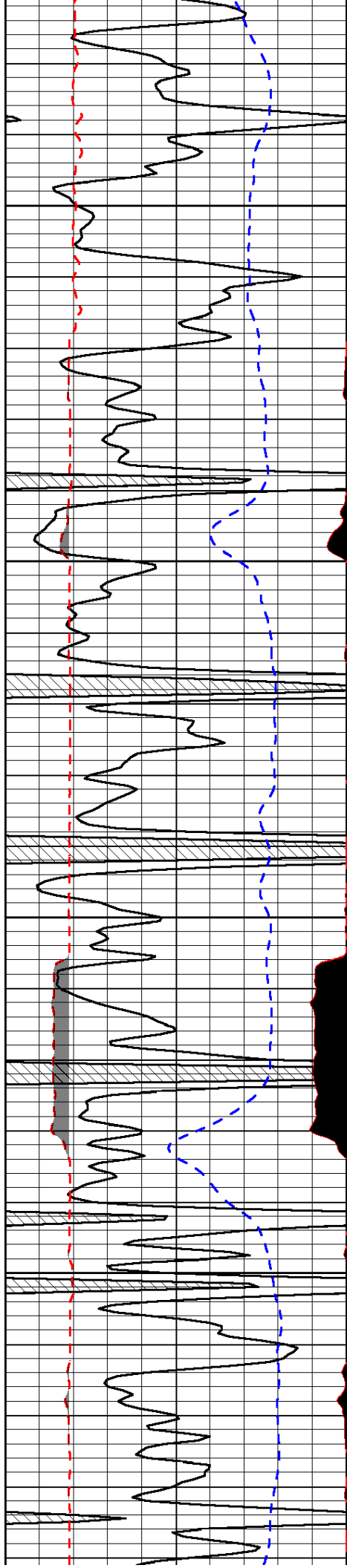


-32

-32

-32

-31

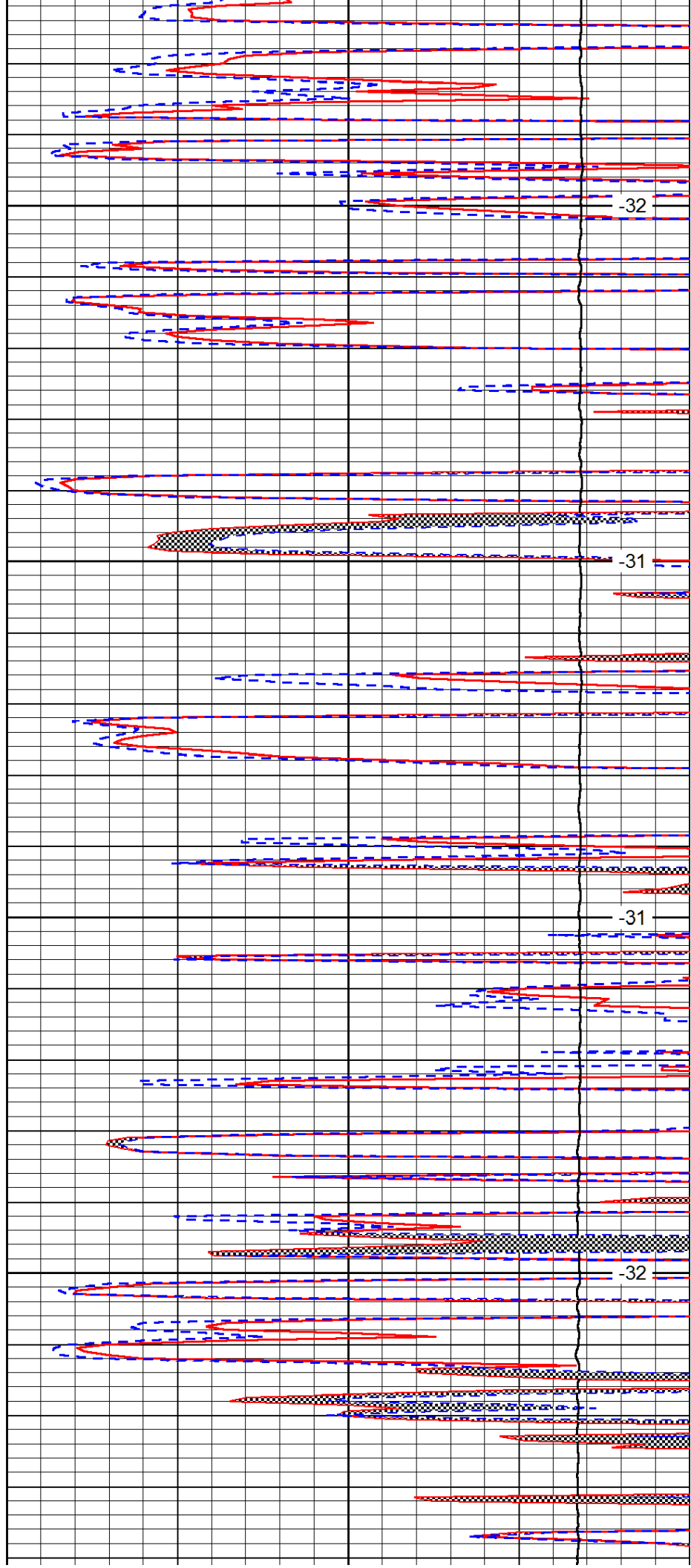


4100

4150

4200

4250

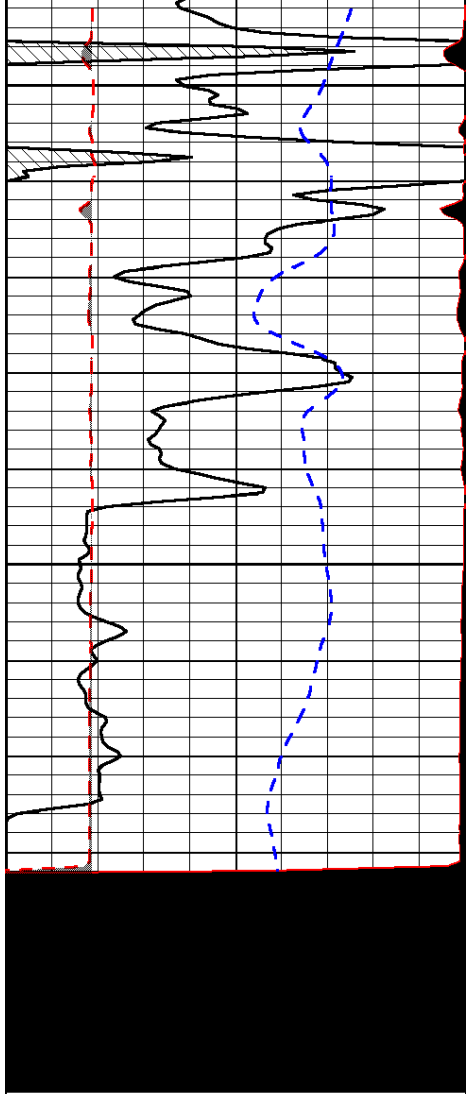


-32

-31

-31

-32

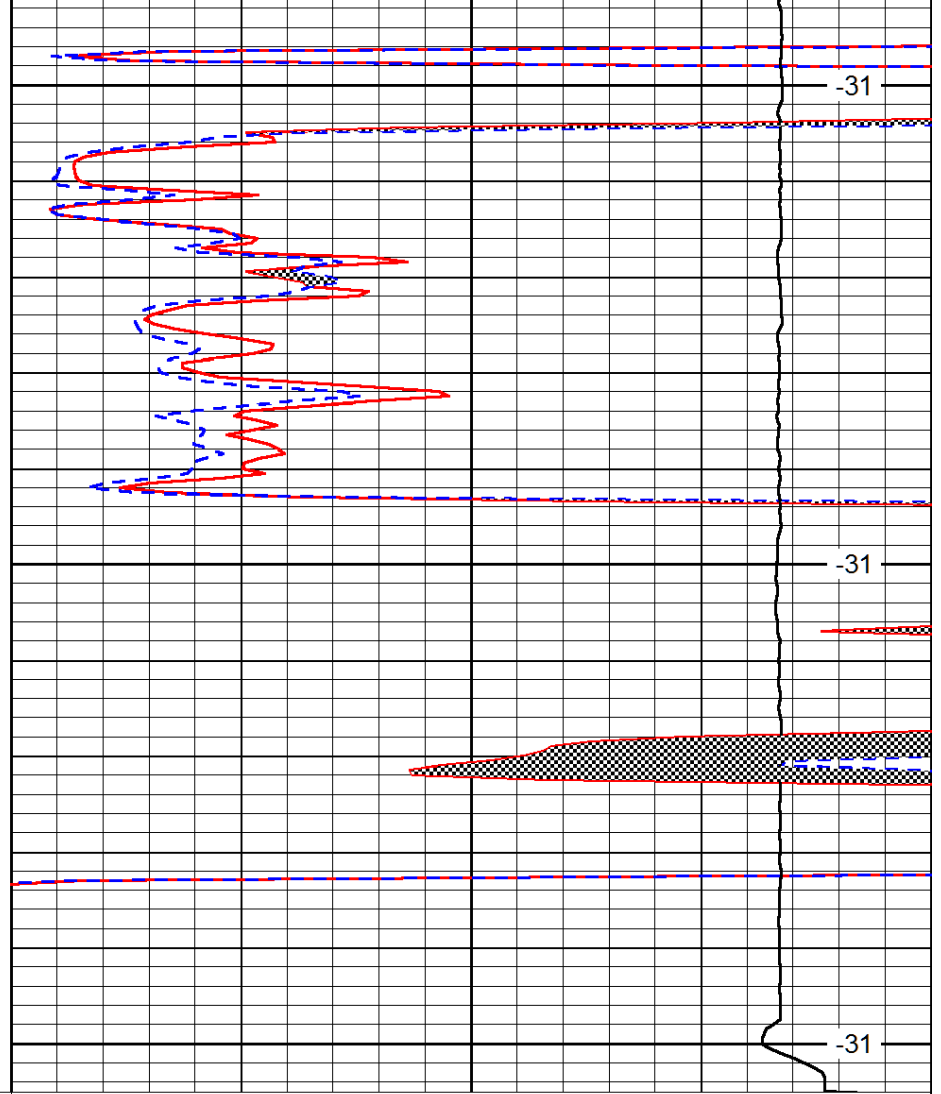


| | | |
|-------|-----------------|-------|
| 0 | Gamma Ray | 150 |
| 6 | MCAL (GAPI) | 16 |
| 2.875 | Mud Cake (GAPI) | 7.875 |
| -200 | SP (mV) | 0 |

4300

4350

4400



| | | |
|-------|---------------------|----|
| 0 | Micro Inverse 1 X 1 | 40 |
| 0 | Micro Normal 2" | 40 |
| 10000 | Line Weight | 0 |

LSPD