



Pioneer Energy Services

Dual Induction Log

API No.	15-109-21,304-00-00	
Company	Black Tea Oil, LLC	
Well	DFK 1 No.1	
Field		
County	Logan	State
		Kansas
Location	NE-NW-SE-NW 1605' FNL & 1745' FWL	
Sec: 2	Twp: 15S	Rge: 32W
Permanent Datum	Ground Level	Elevation 2669
Log Measured From	Kelly Bushing	9 Ft. Above Perm. Datum
Drilling Measured From	Kelly Bushing	
		Other Services CNL/CDL MEL/BHCS
		Elevation K.B. 2678 D.F. 2669 G.L. 2669

Date	6/22/14
Run Number	One
Depth Driller	4400
Depth Logger	4400
Bottom Logged Interval	4399
Top Log Interval	250
Casing Driller	8.625 @ 264
Casing Logger	262
Bit Size	7.875
Type Fluid in Hole	Chemical
Salinity, ppm CL	4.000
Density / Viscosity	9.1 52
pH / Fluid Loss	10.0 7.2
Source of Sample	Flowline
Rm @ Meas. Temp	.50 @ 86
Rmf @ Meas. Temp	.38 @ 86
Rmc @ Meas. Temp	.68 @ 86
Source of Rmf / Rmc	Charts
Rm @ BHT	.36 @ 120
Operating Rig Time	5 Hours
Max Rec. Temp. F	120
Equipment Number	108
Location	Hays
Recorded By	J. Henrickson
Witnessed By	Kevin Bailey

<<< Fold Here >>>

All interpretations are opinions based on inferences from electrical or other measurements and we cannot and do not guarantee the accuracy or correctness of any interpretation, and we shall not, except in the case of gross or willful negligence on our part, be liable or responsible for any loss, costs, damages, or expenses incurred or sustained by anyone resulting from any interpretation made by any of our officers, agents or employees. These interpretations are also subject to our general terms and conditions set out in our current Price Schedule.

Comments

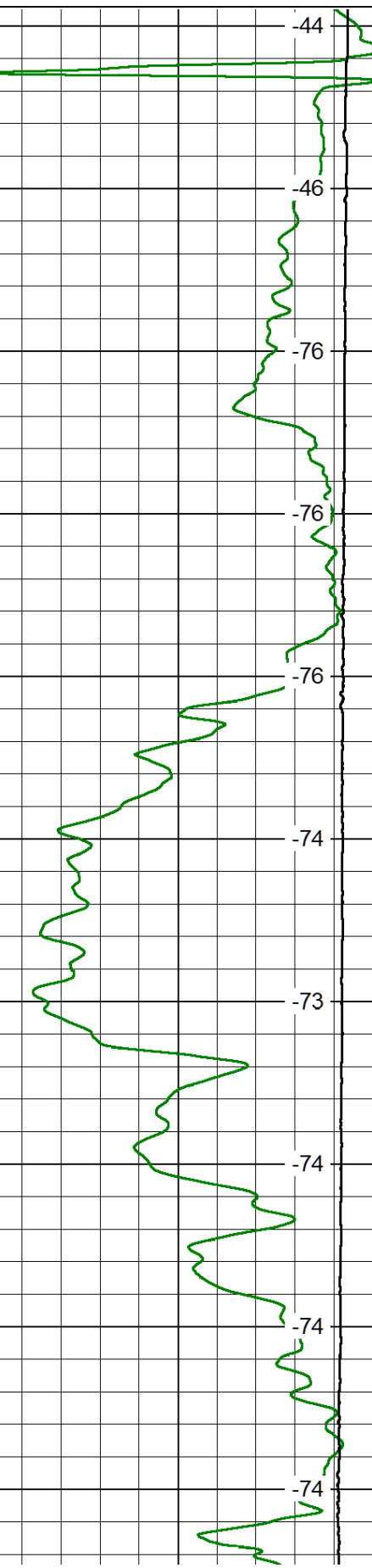
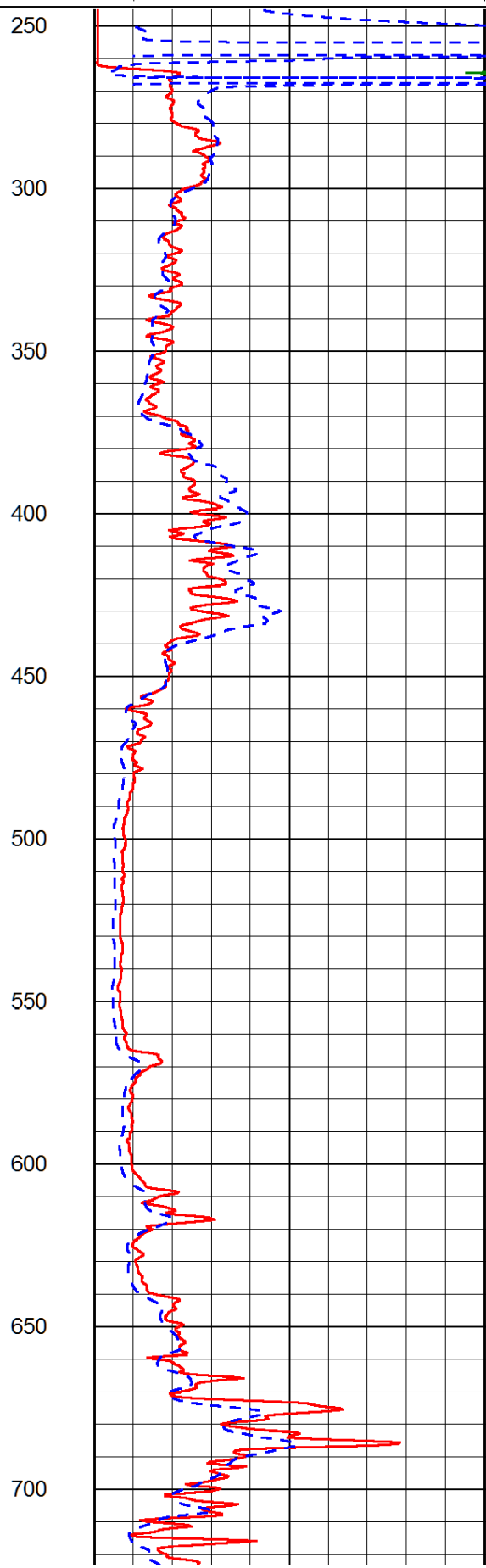
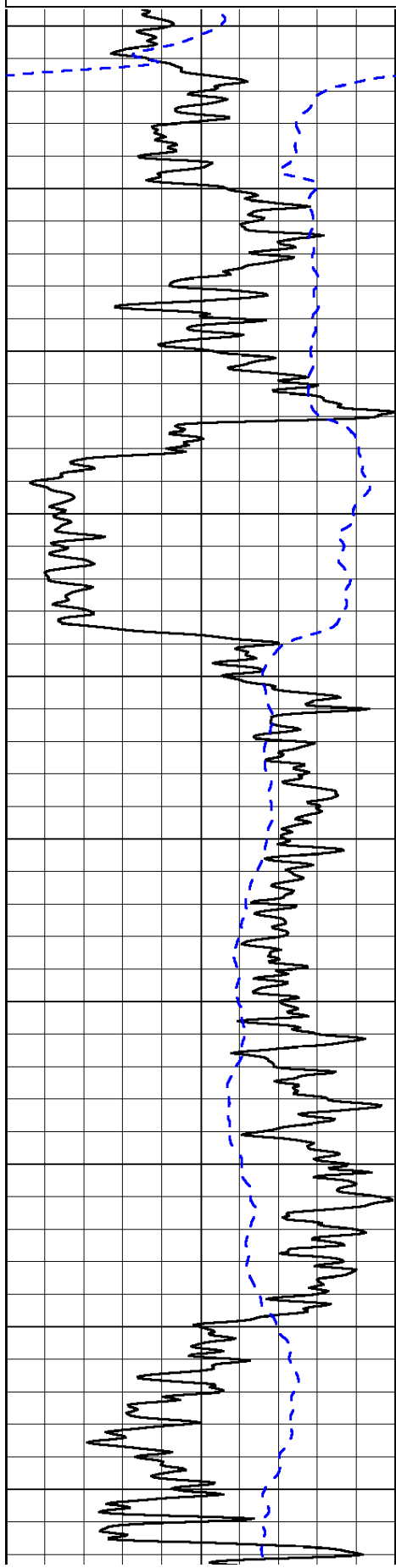
Thank you for using Log-Tech, Inc.
 (785) 625-3858
 Oakley Kansas
 South to Gold Rd, East Into

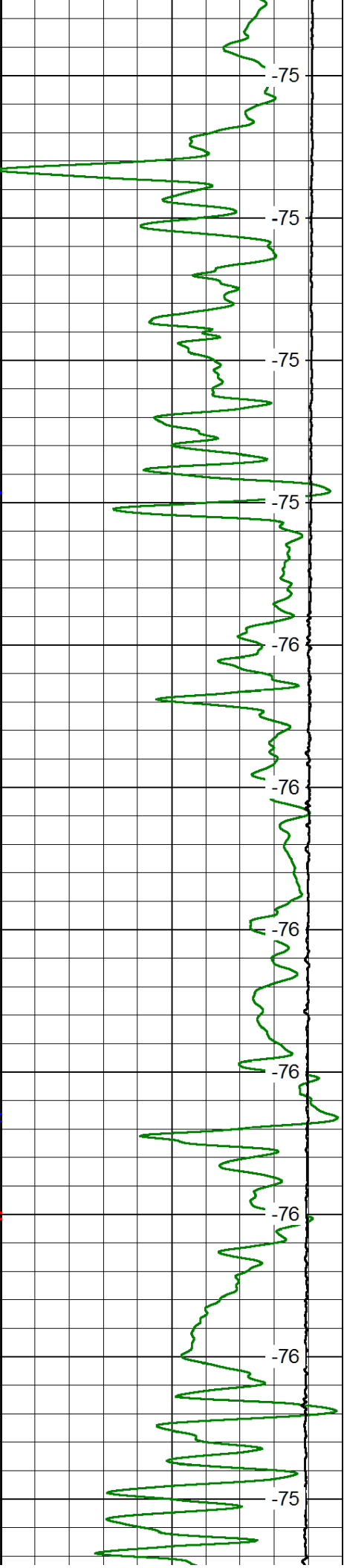
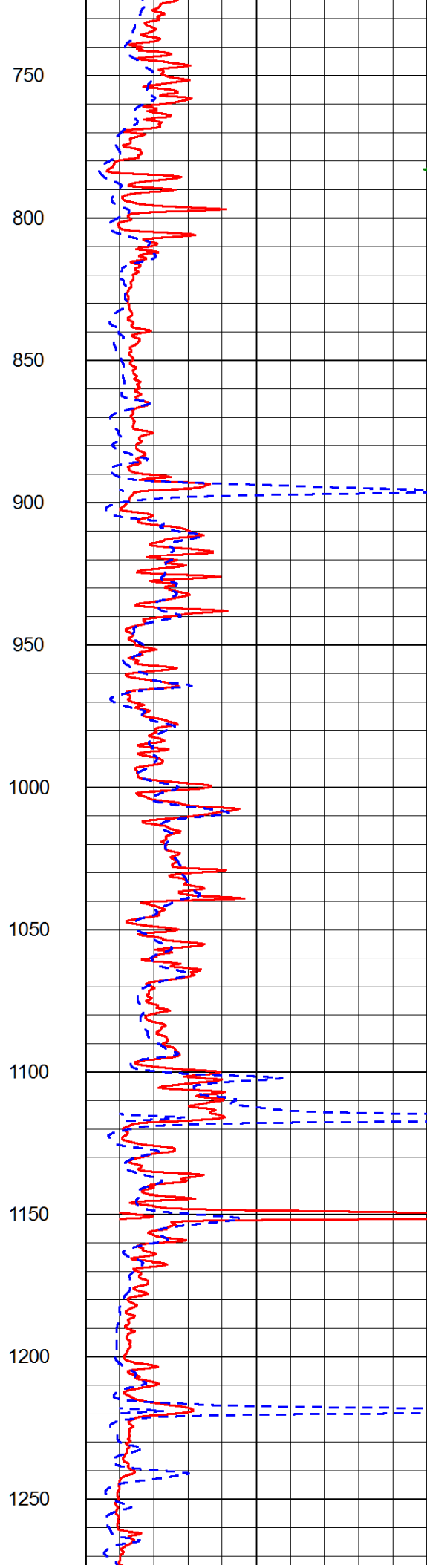
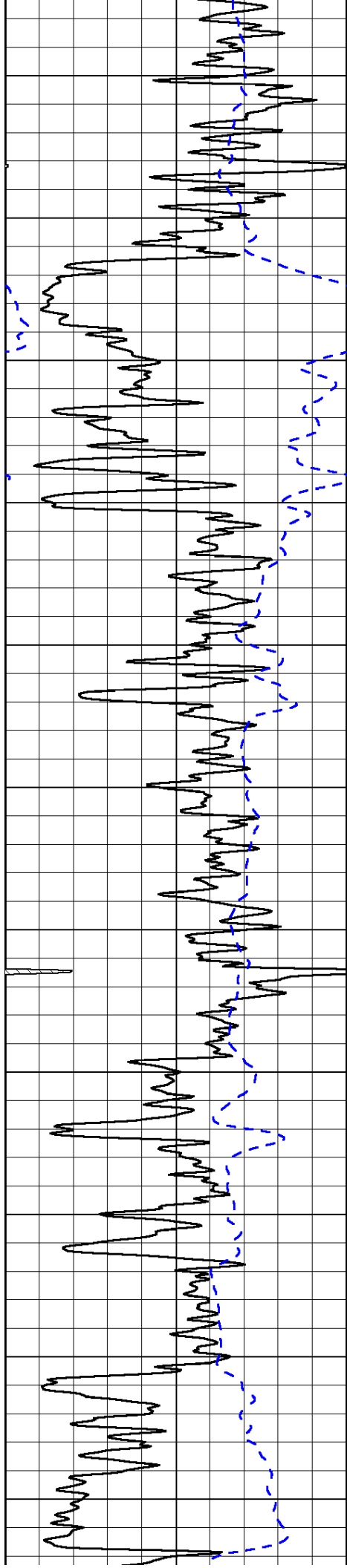
Database File: blacktea_dfk_1_1hd.db
 Dataset Pathname: DIL/bteastk
 Presentation Format: dil2in
 Dataset Creation: Sun Jun 22 20:32:53 2014
 Charted by: Depth in Feet scaled 1:600

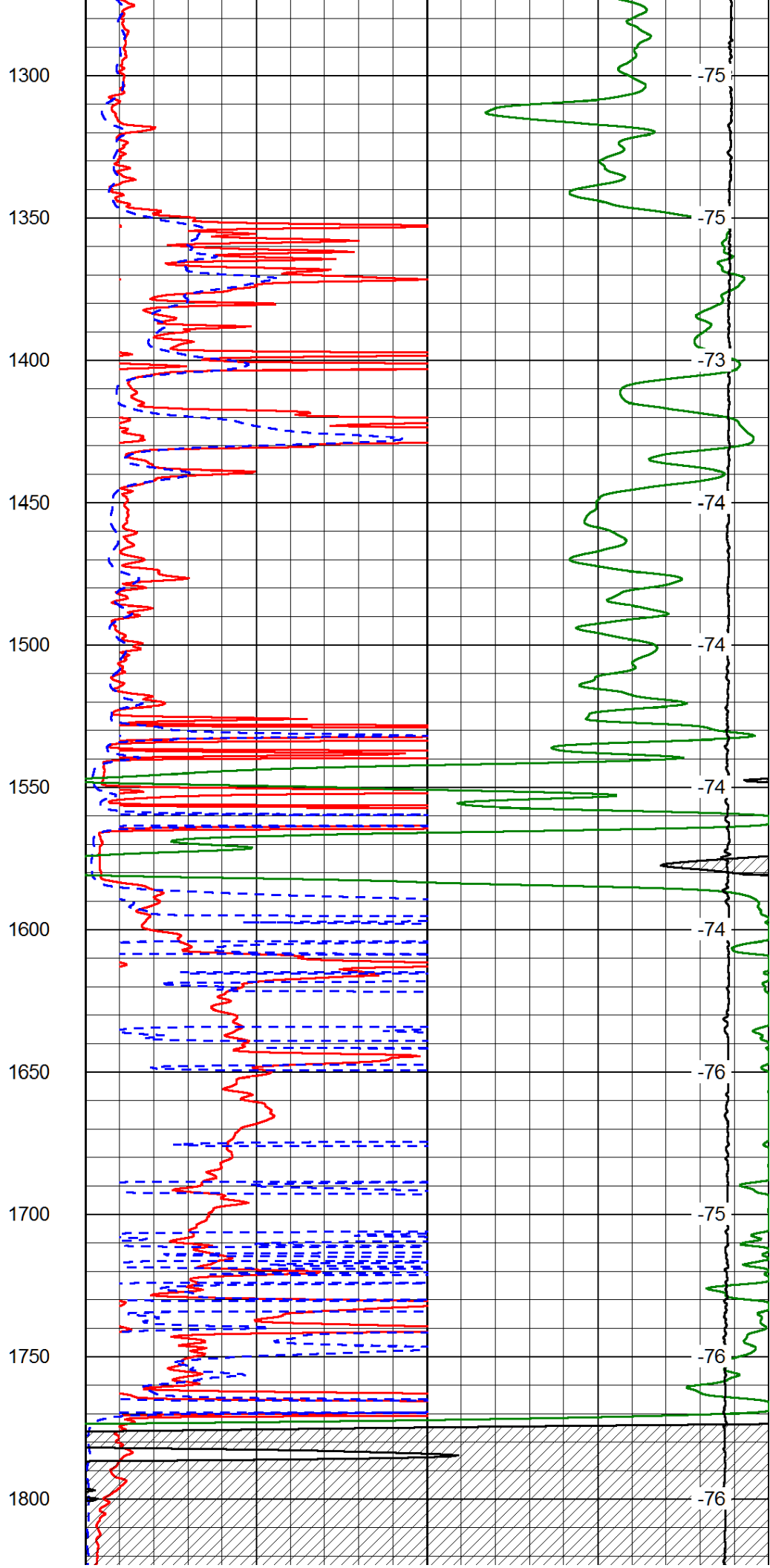
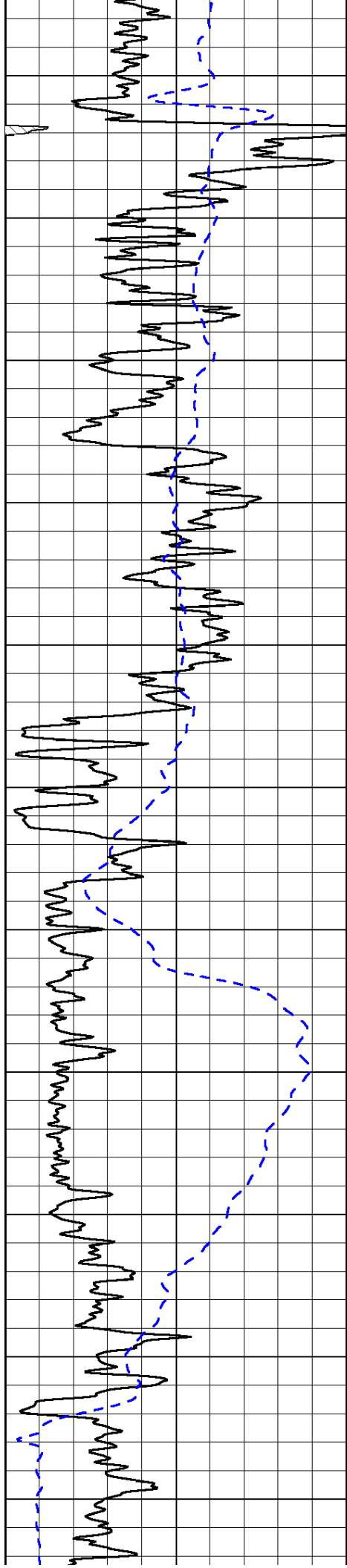
0 Gamma Ray 150
-200 SP (mV) 0

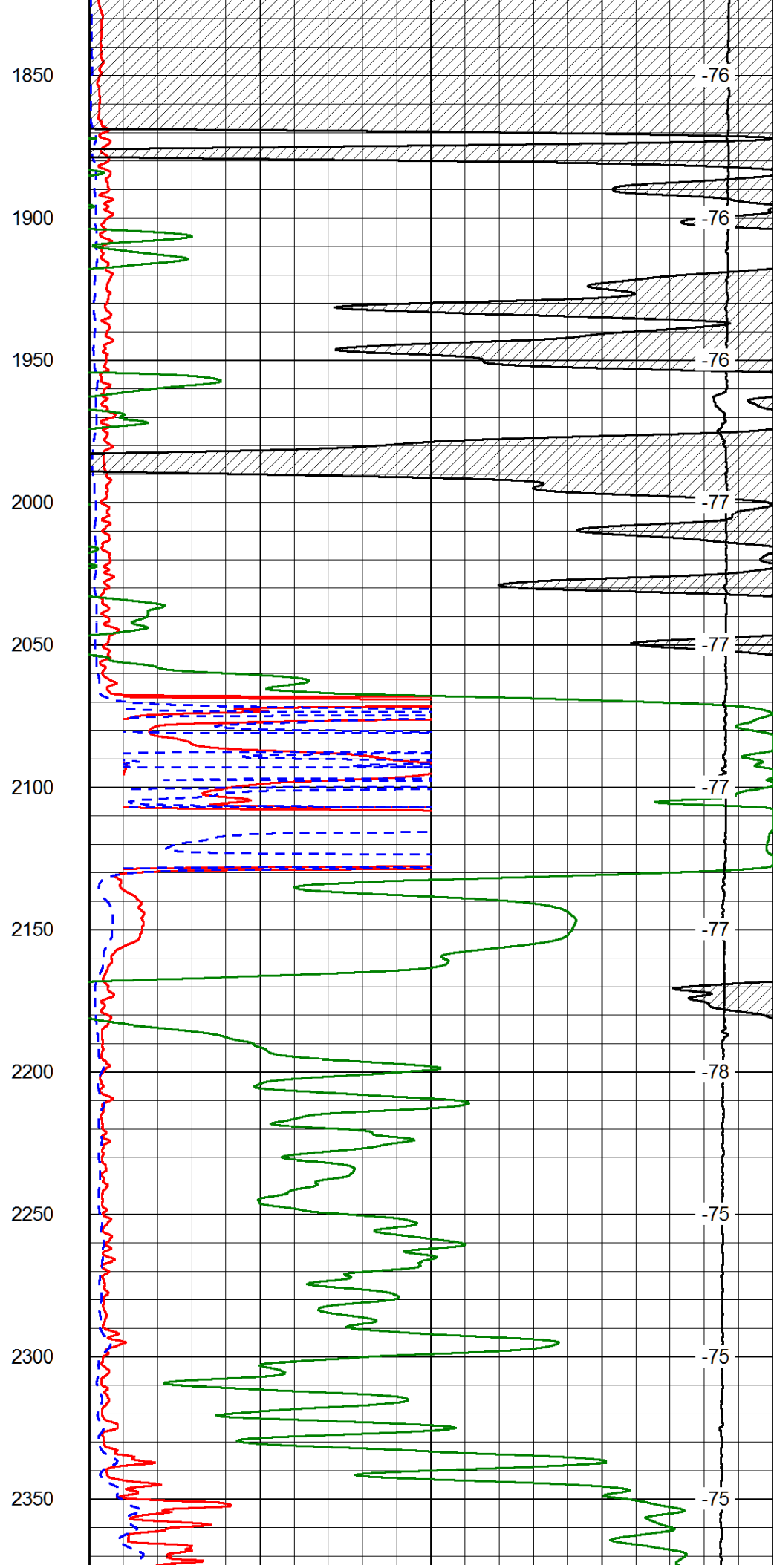
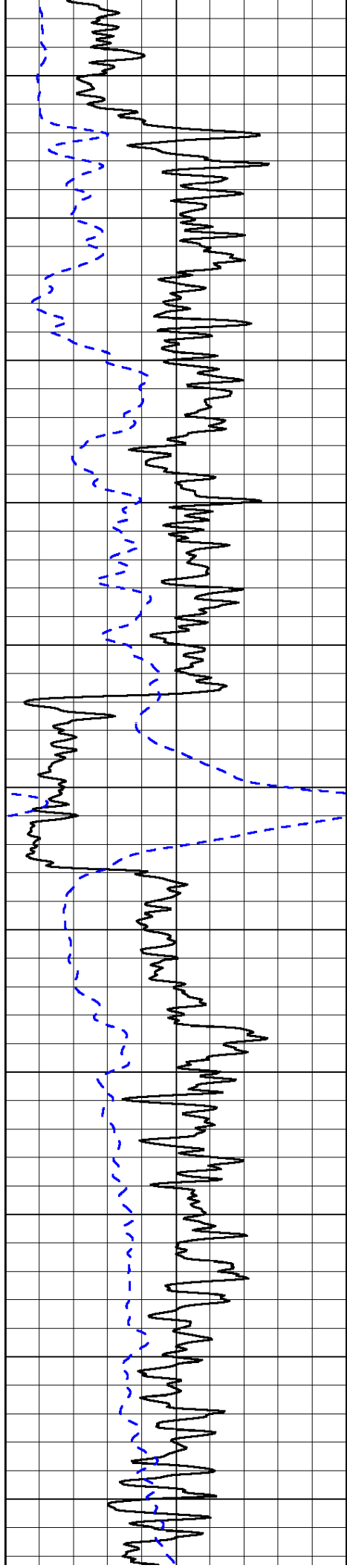
0 Shallow Resistivity 50
0 Deep Resistivity 50
1000 Conductivity 0
15000 Line Tension 0
50 Shallow Resistivity 500
50 Deep Resistivity 500

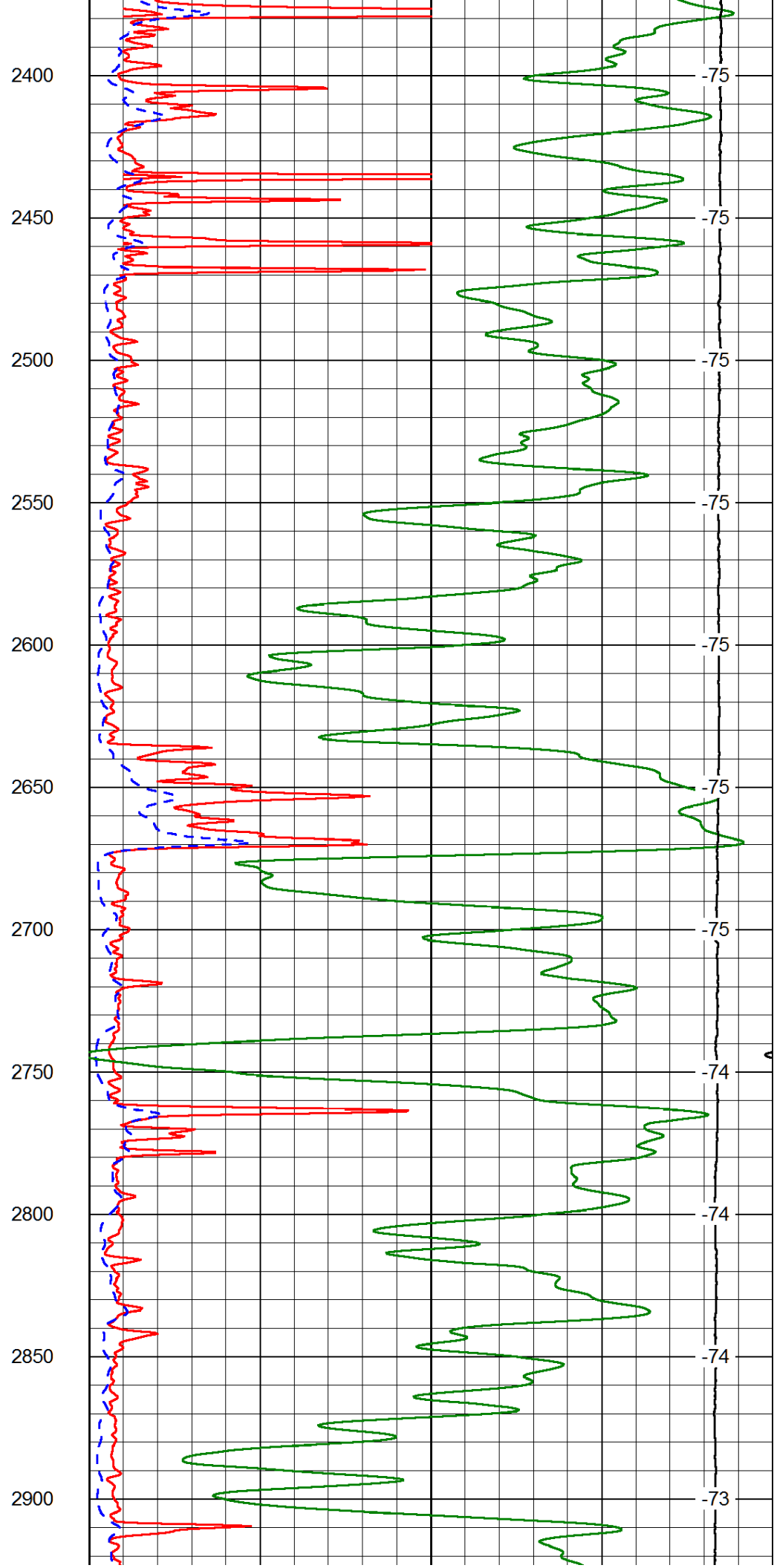
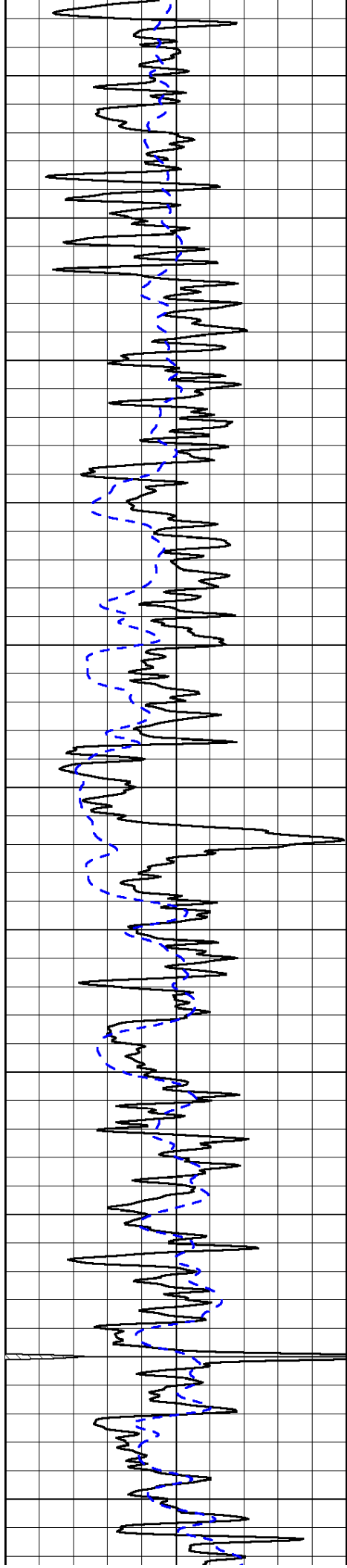
LSPD
0
0

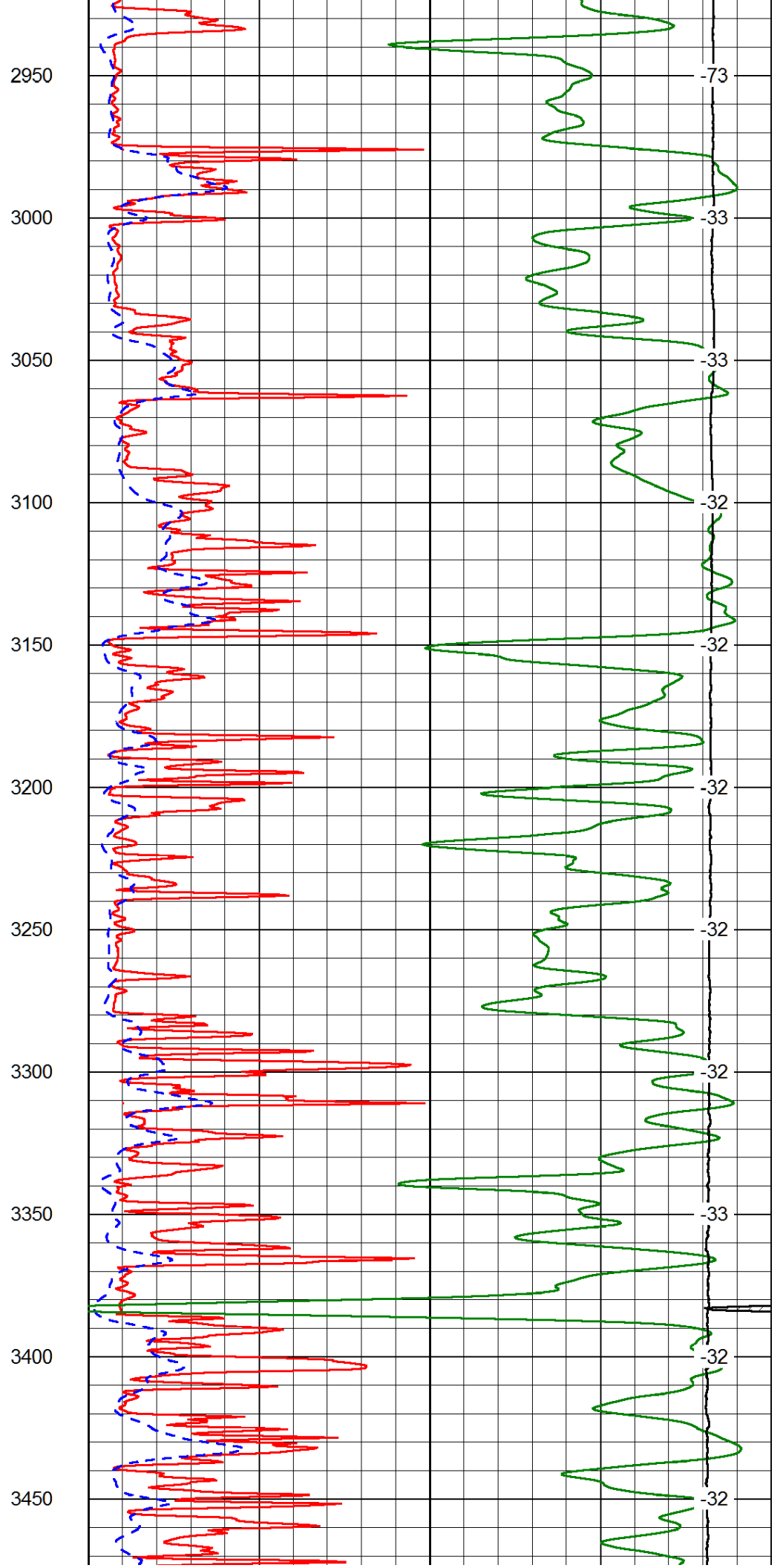
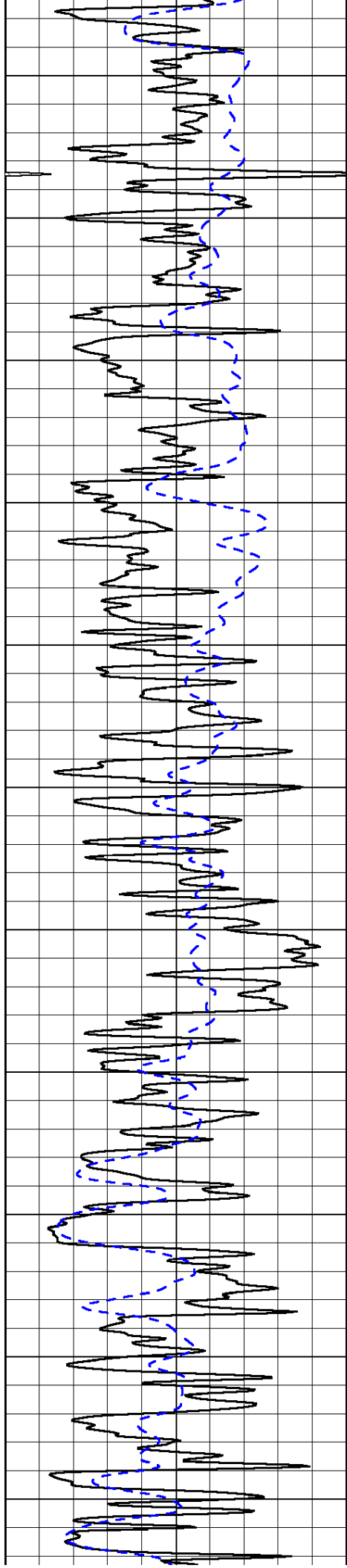


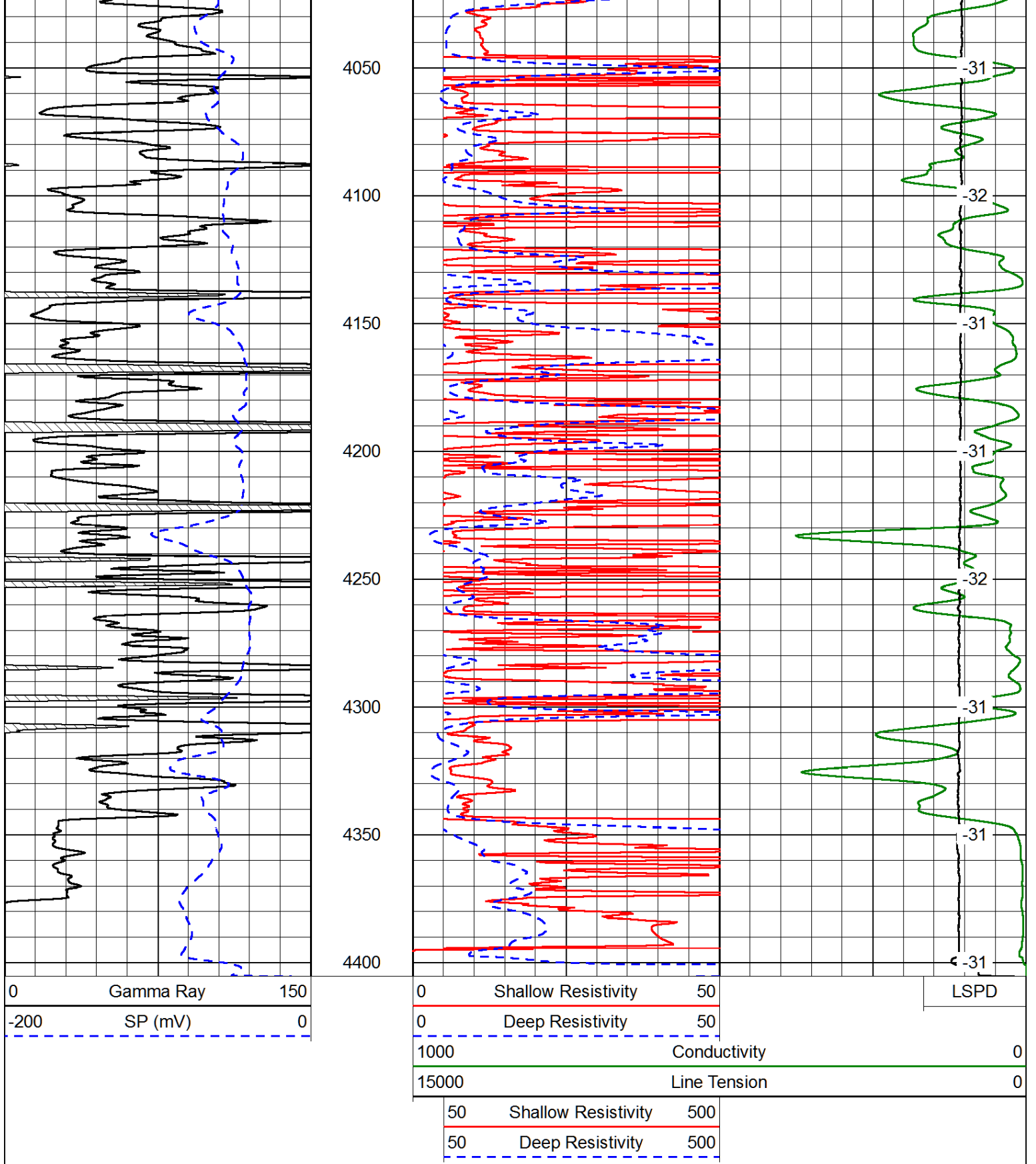




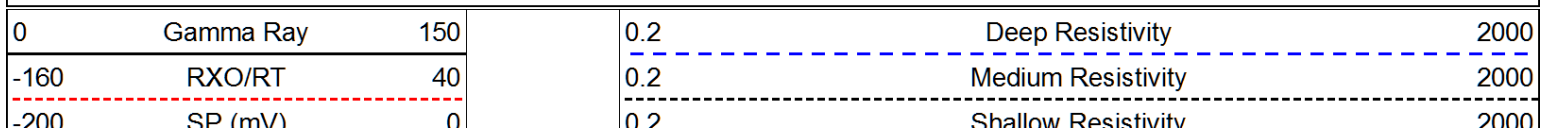


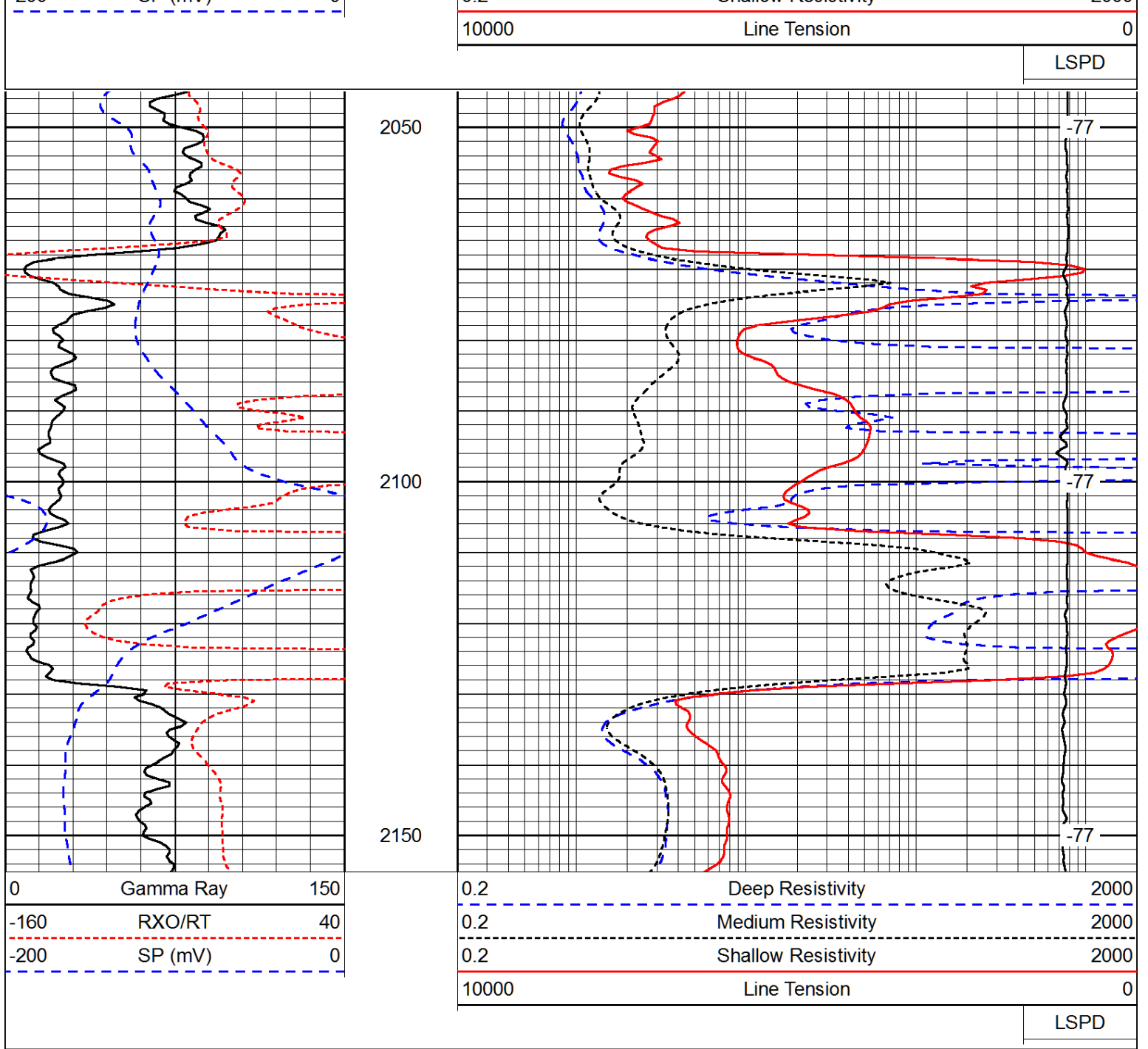




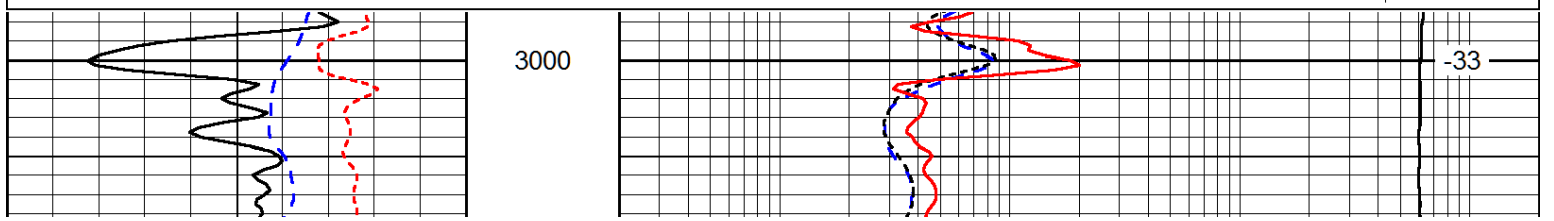
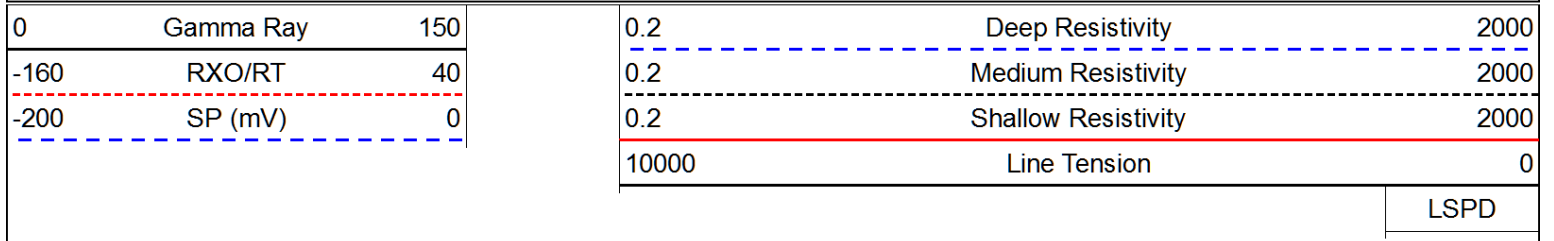


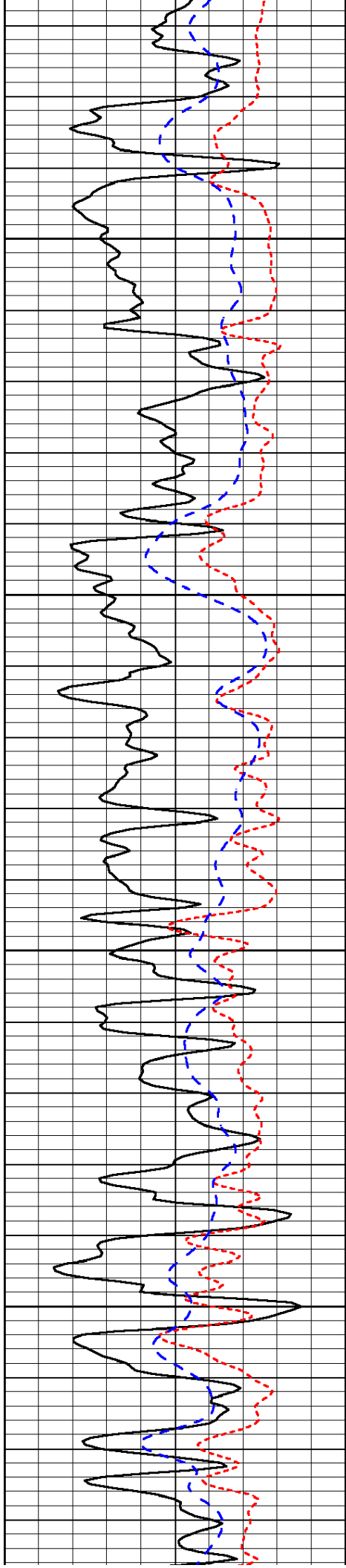
Database File: blacktea_dfk_1_1hd.db
 Dataset Pathname: DIL/bteastk
 Presentation Format: dil
 Dataset Creation: Sun Jun 22 20:32:53 2014
 Charted by: Depth in Feet scaled 1:240





Database File: blacktea_dfk_1_1hd.db
 Dataset Pathname: DIL/bteastk
 Presentation Format: dil
 Dataset Creation: Sun Jun 22 20:32:53 2014
 Charted by: Depth in Feet scaled 1:240



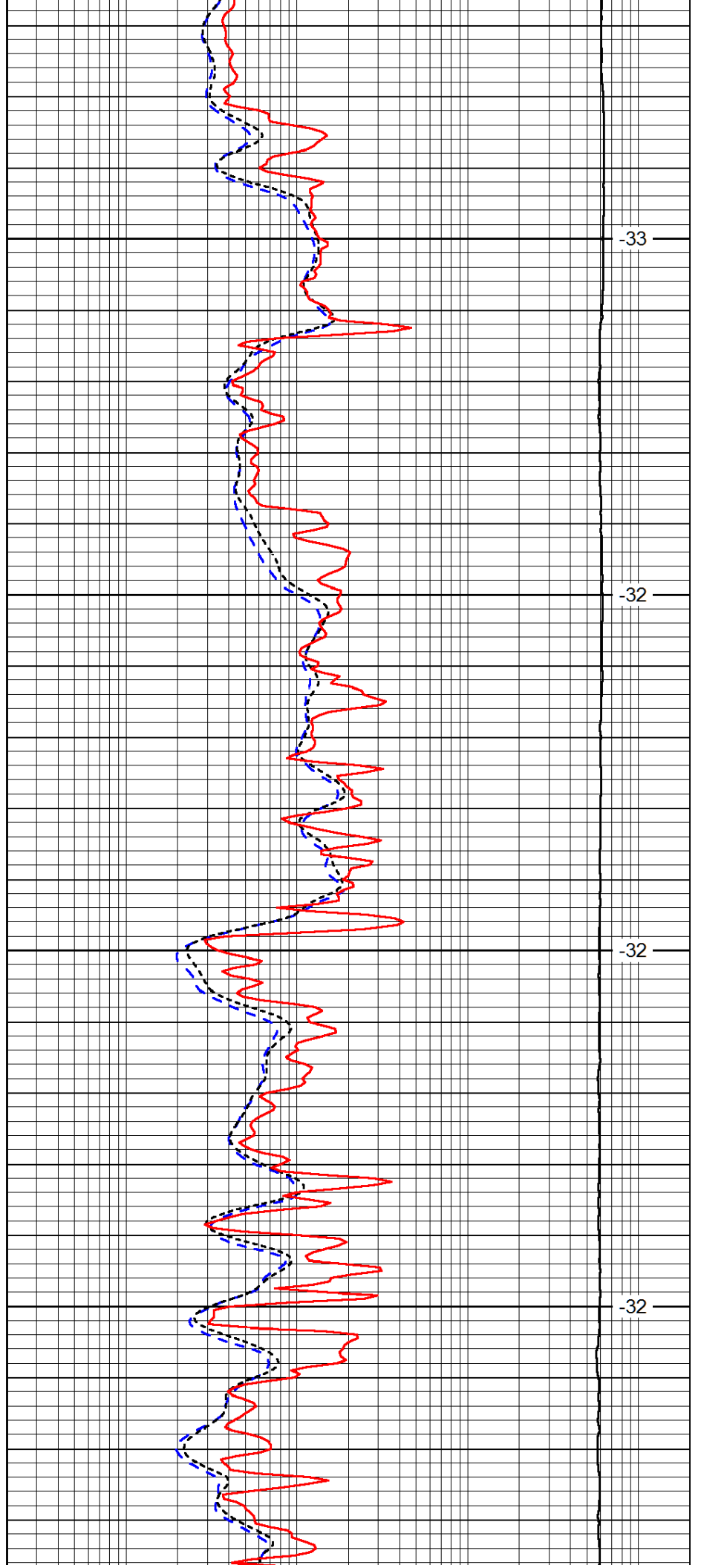


3050

3100

3150

3200

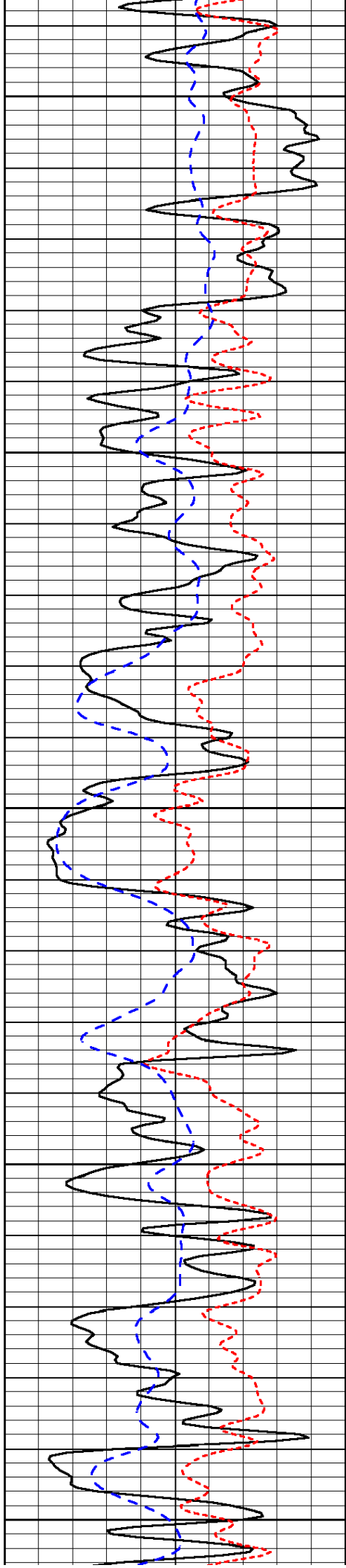


-33

-32

-32

-32



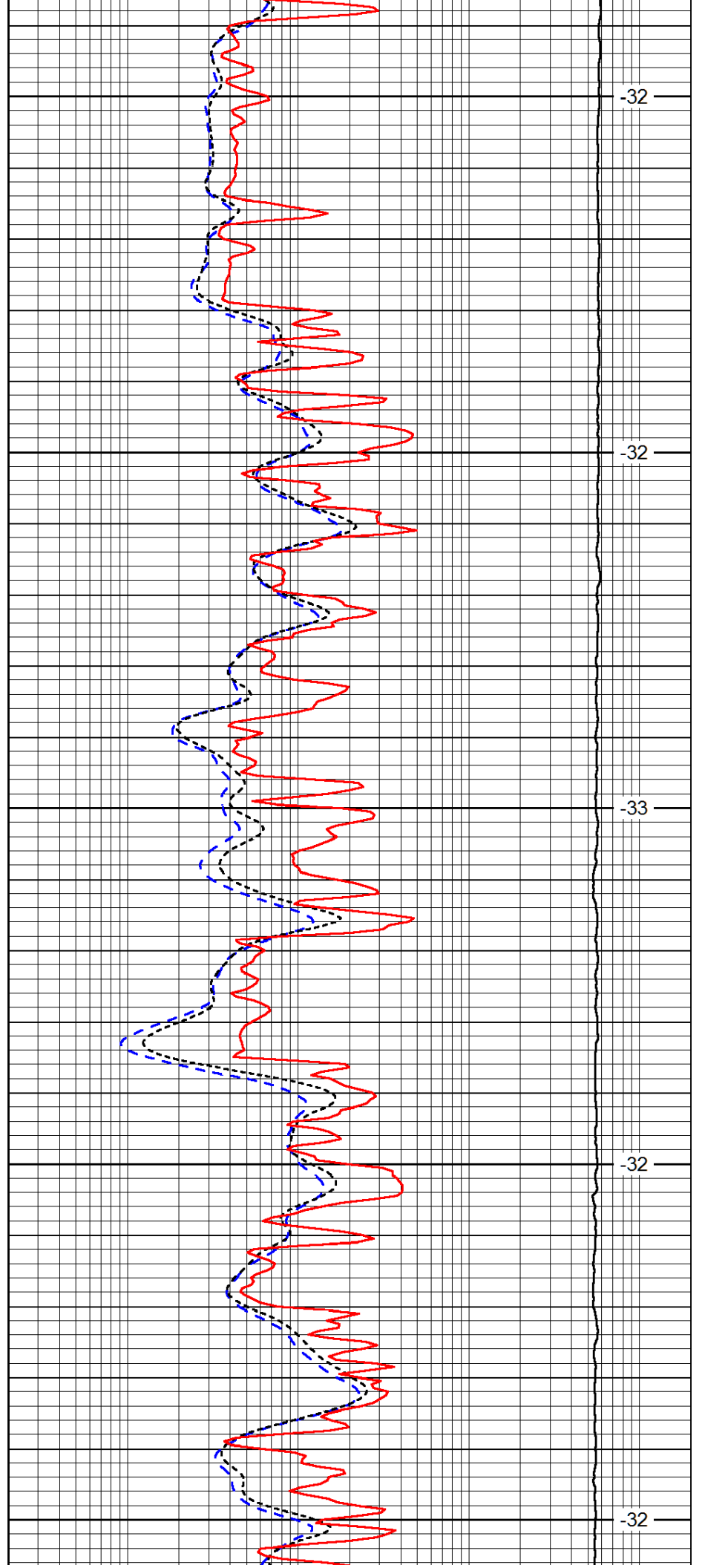
3250

3300

3350

3400

3450



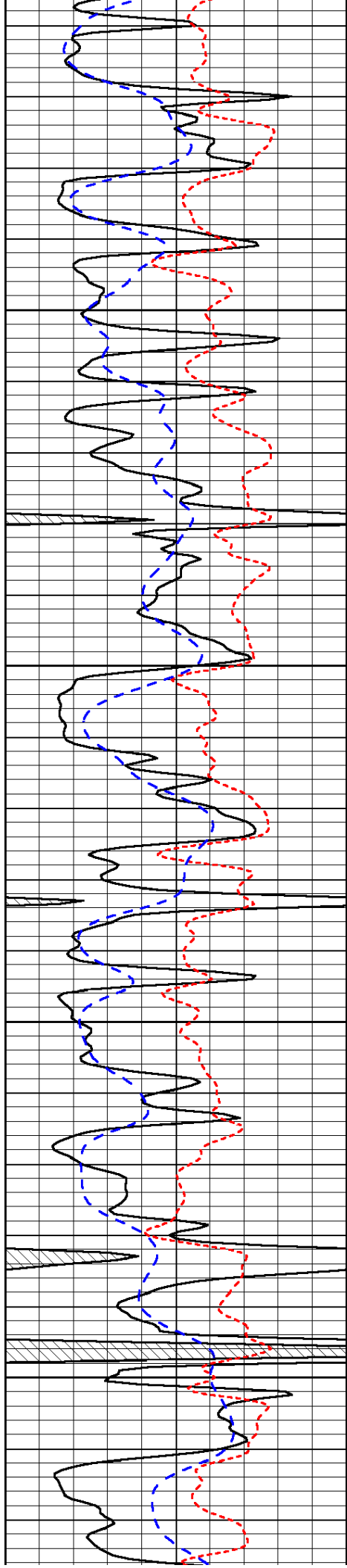
-32

-32

-33

-32

-32

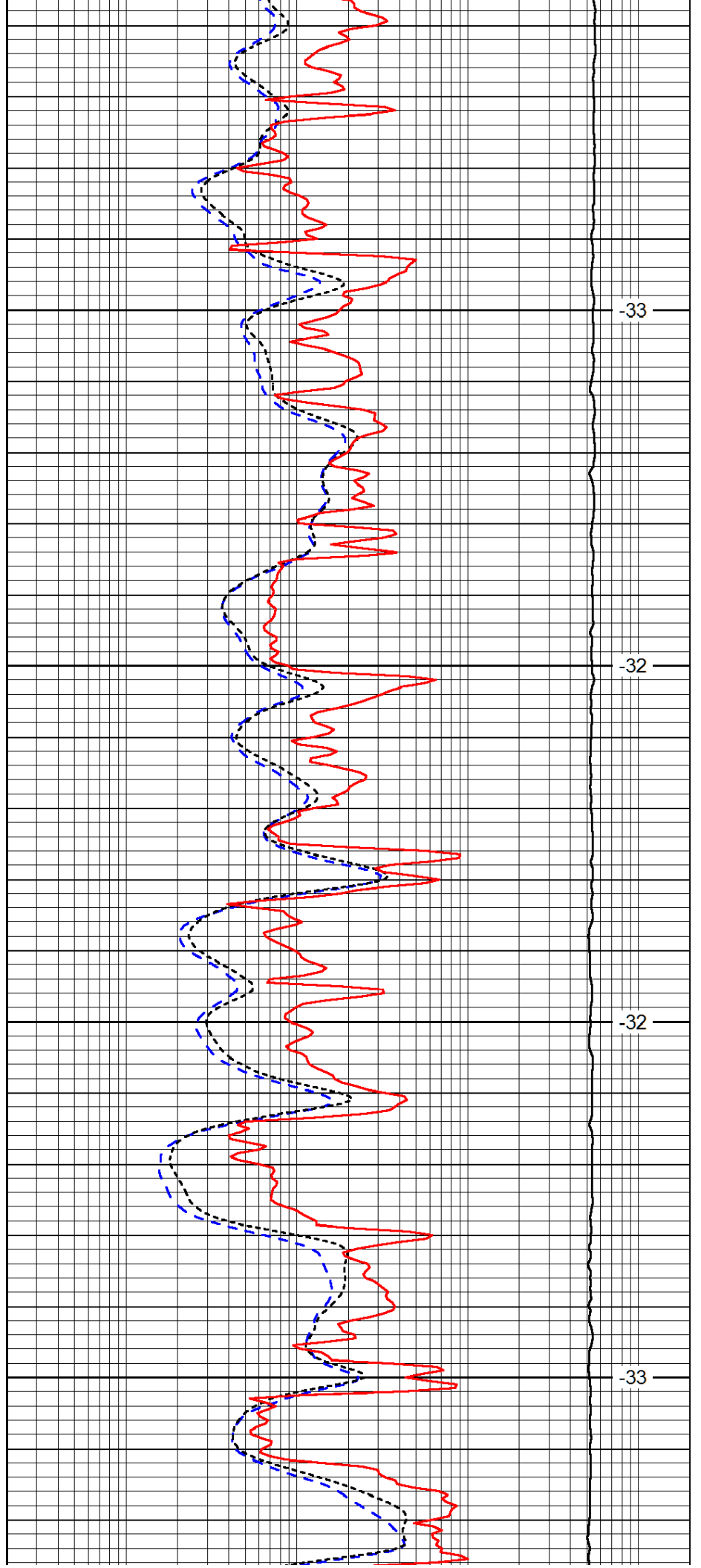


3500

3550

3600

3650

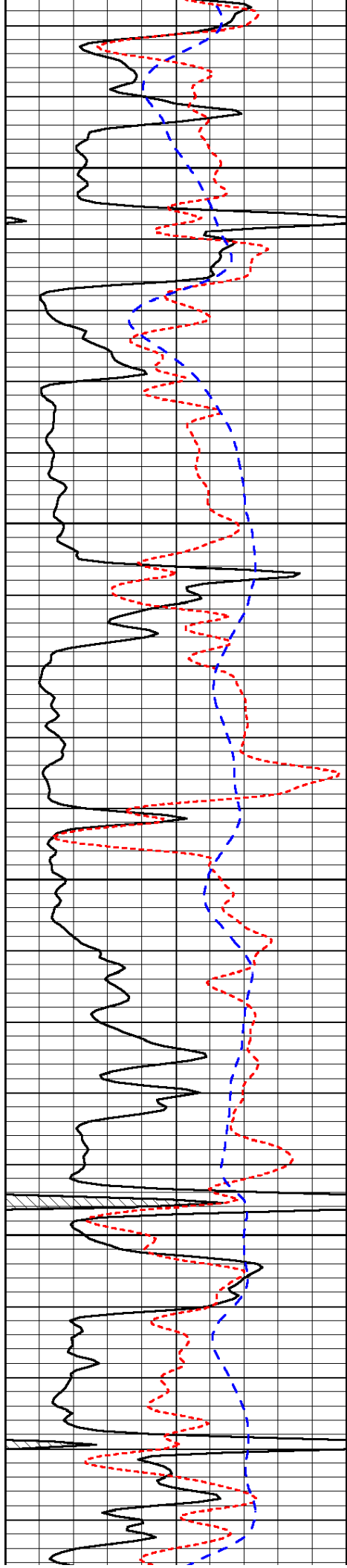


-33

-32

-32

-33

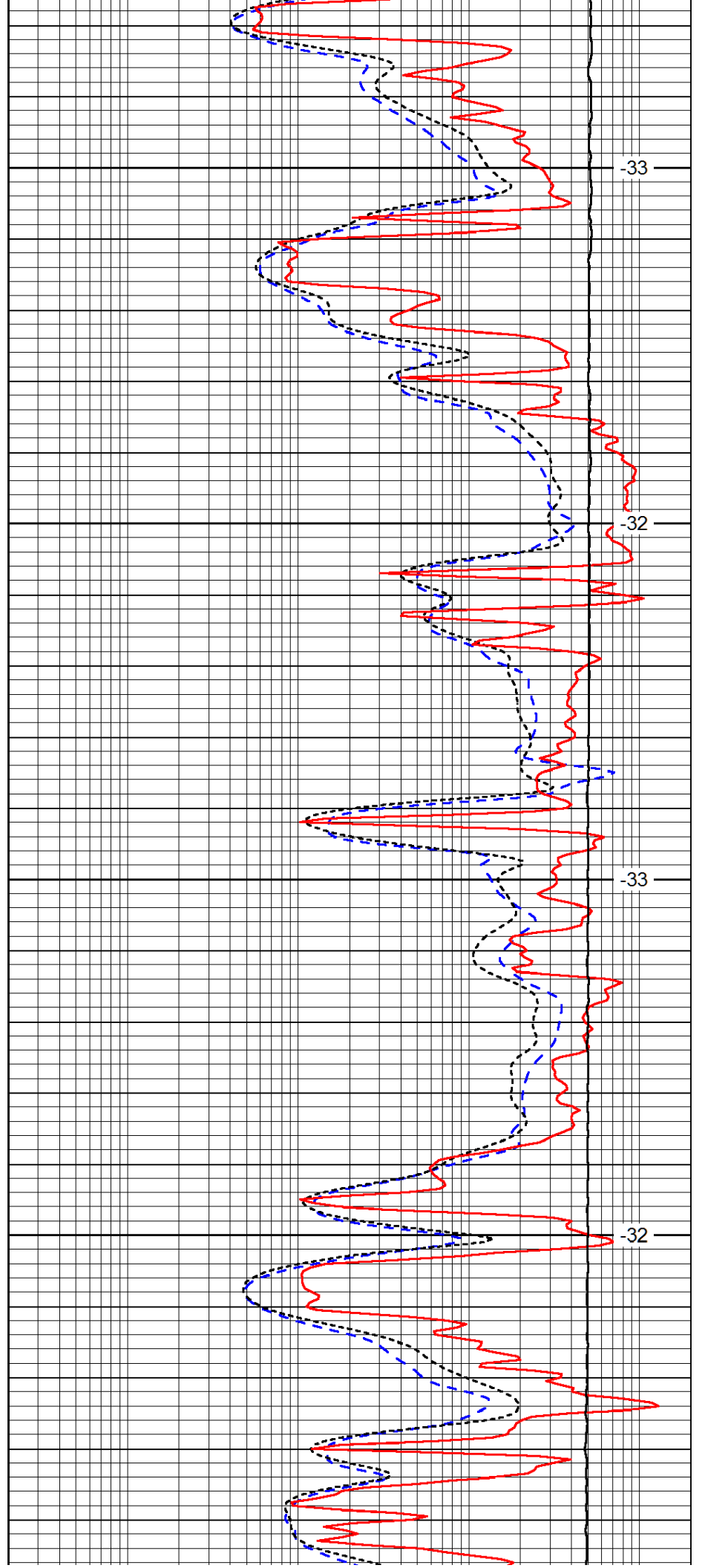


3700

3750

3800

3850

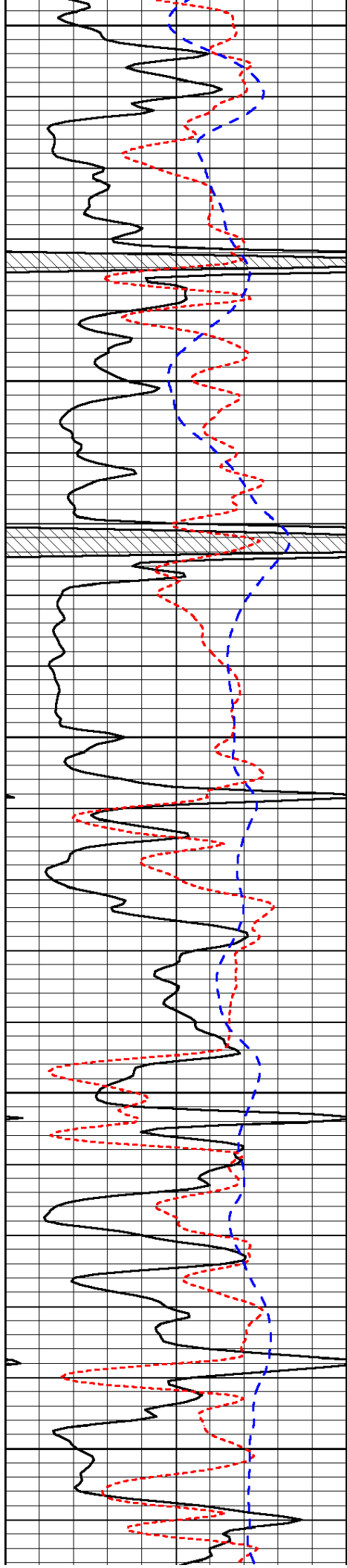


-33

-32

-33

-32



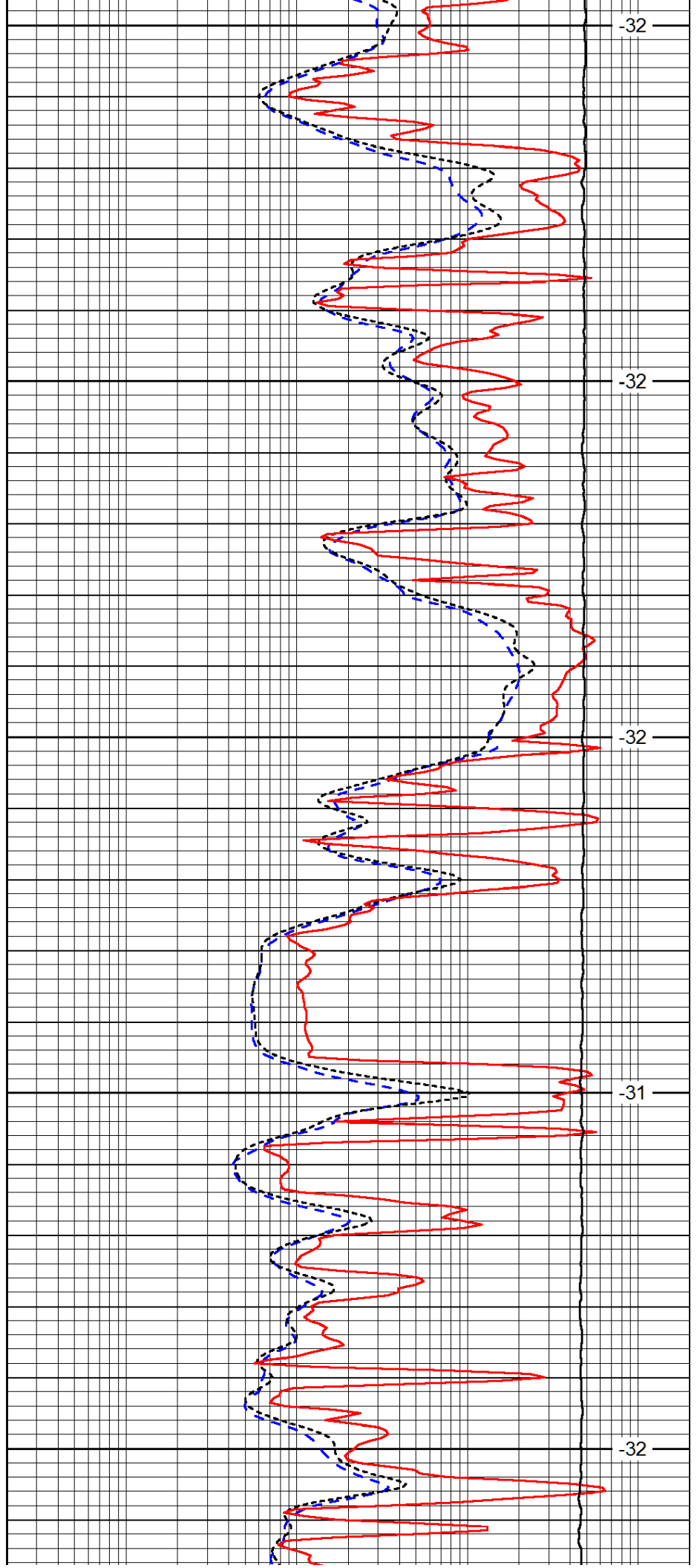
3900

3950

4000

4050

4100



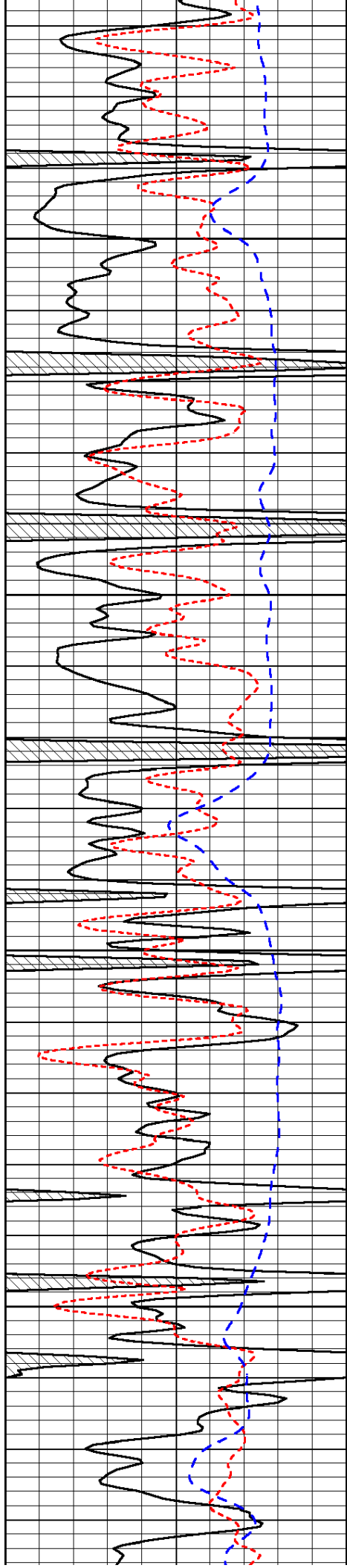
-32

-32

-32

-31

-32

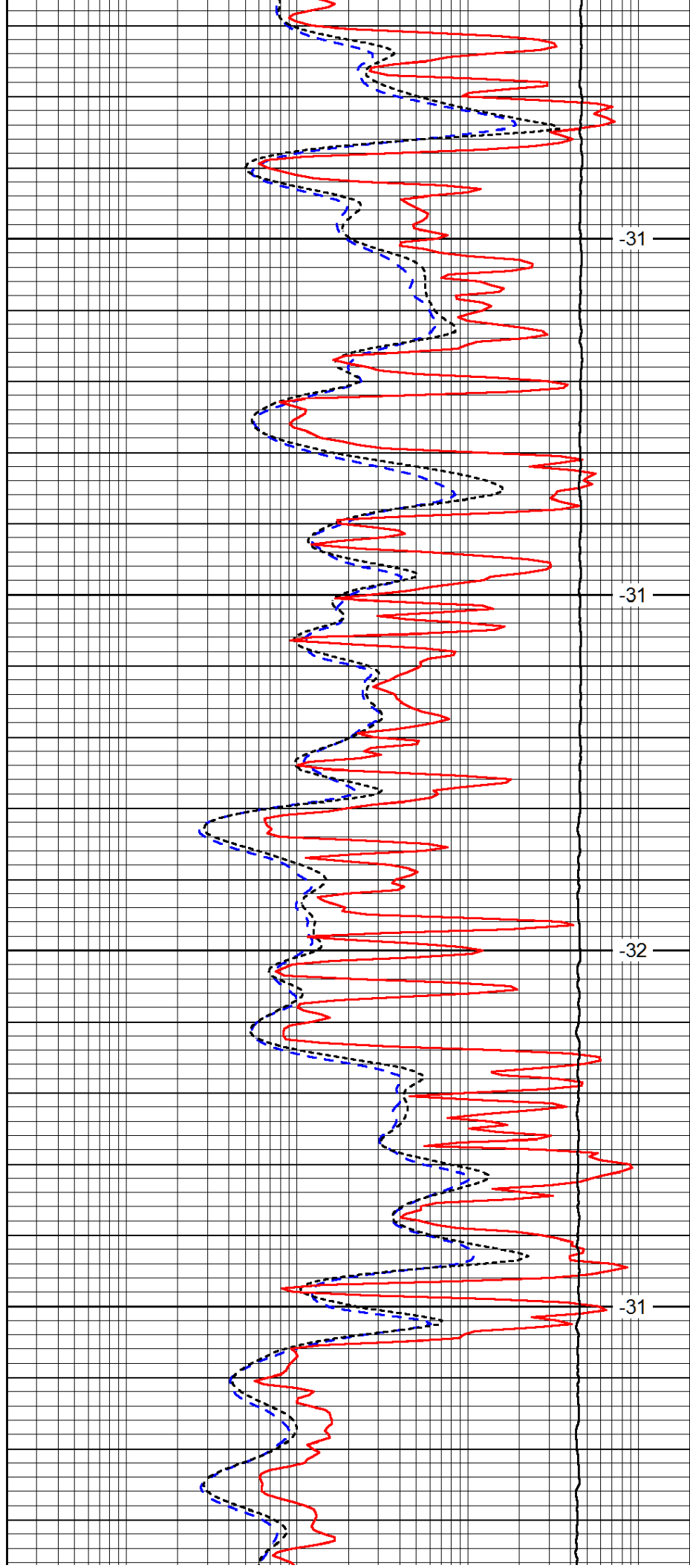


4150

4200

4250

4300

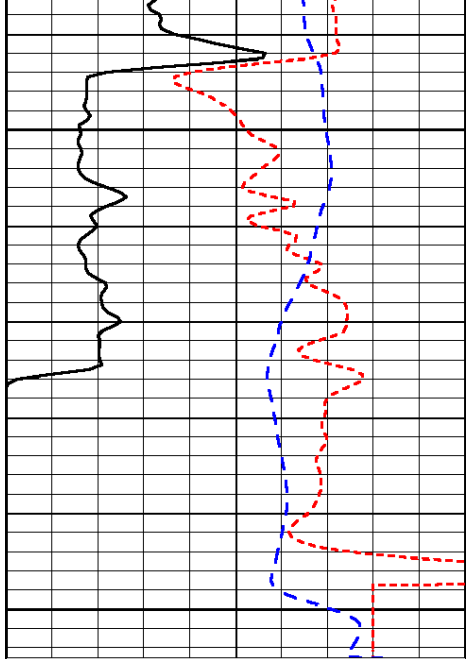


-31

-31

-32

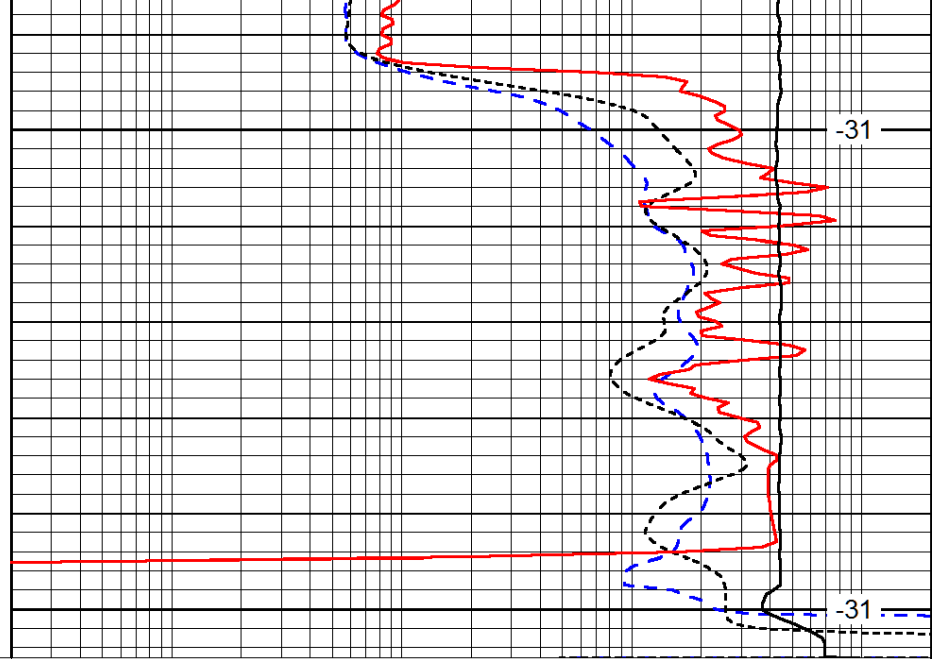
-31



0	Gamma Ray	150
-160	RXO/RT	40
-200	SP (mV)	0

4350

4400



-31

-31

0.2	Deep Resistivity	2000
0.2	Medium Resistivity	2000
0.2	Shallow Resistivity	2000
10000	Line Tension	0

LSPD