



MIDWEST SURVEYS
 LOGGING - PERFORATING - CONSULTING SERVICES
 P.O. Box 68, Osawatomie, KS 66064
 913 / 755 - 2128

GAMMA RAY / NEUTRON / CCL

File No. Company **Haas Petroleum, LLC.**
 Well **Trester No. 3-HP**
 Field **Iola**
 County **Allen** State **Kansas**

Location **495' FNL & 3370' FEL**
SE-NW-NE-NW
 Other Services
 Perforate

Sec. 8 Twp. 24S Rge. 19e
 Permian Datum GL Elevation 1061'
 Log Measured From GL K.B. NA
 Drilling Measured From GL D.F. NA
 GL 1061'

Date 07-09-2014
 Run Number One
 Depth 1024.0
 Depth Logger 1020.0
 Bottom Logged Interval 1019.0
 Top Log Interval 20.0
 Fluid Level Full

Type Fluid Water
 Density / Viscosity NA
 Salinity - PPM Cl NA
 Max Recorded Temp NA
 Estimated Cement Top 0.0
 Equipment No. 102
 Location Osawatimie
 Recorded By Gary Windisch
 Witnessed By John Haas

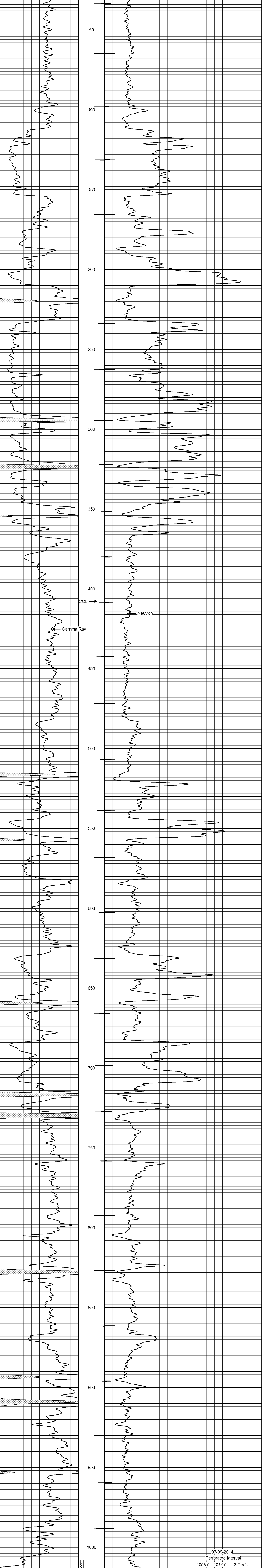
BORE-HOLE RECORD				CASING RECORD			
Run	BIT	FROM	TO	SIZE	WGT	FROM	TO
One	12.25"	0.0	20.0	8.625"	24.0 #	0.0	20.0
Two	6.75"	20.0	1024.0	4.50"	10.5 #	0.0	1020.50

<<< Fold Here >>>
 All interpretations are opinions based on inferences from electrical or other measurements and we cannot and do not guarantee the accuracy or correctness of any interpretation, and we shall not, except in the case of gross or willful negligence on our part, be liable or responsible for any loss, costs, damages, or expenses incurred or sustained by anyone resulting from any interpretation made by any of our officers, agents or employees. These interpretations are also subject to our general terms and conditions set out in our current Price Schedule.

Comments

Drilling Contractor :
 Town Oilfield Services, Inc.

Database File: trester3hp.db
 Dataset Pathname: pass1
 Presentation Format: gr-n-ccl
 Dataset Creation: Wed Jul 09 09:49:46 2014 by Log SCH 111116
 Charted by: Depth in Feet scaled 1:240



07-09-2014
 Perforated Interval
 1008.0 - 1014.0 13 Perfs
 3 3/8" DP 19 Gr. T. ECG