



MIDWEST SURVEYS
 LOGGING - PERFORATING - CONSULTING SERVICES
 P.O. Box 68, Osawatomie, KS 66064
 913 / 755 - 2128

GAMMA RAY / NEUTRON / CCL

File No. Company **Haas Petroleum, LLC.**
 Well **Trester No. 1-HP**
 Field **Iola**
 County **Allen** State **Kansas**

Location **165' FNL & 3370' FEL**
NE-NW-NE-NW
 Sec. 8 Twp. 24S Rge. 19E
 Permian/Datum GL Elevation 1056'
 Log Measured From GL K.B. NA
 Drilling Measured From GL D.F. NA
 G.L. 1056'

Date **07-09-2014**
 Run Number **One**
 Depth Logger **1026.0**
 Bottom Logged Interval **1018.8**
 Top Log Interval **20.0**
 Fluid Level **Full**

Type Fluid **Water**
 Density / Viscosity **NA**
 Salinity - PPM Cl **NA**
 Max Recorded Temp **NA**
 Estimated Cement Top **0.0**
 Equipment No. **102** Orientation
 Recorded By **Gary Windisch**
 Witnessed By **John Haas**

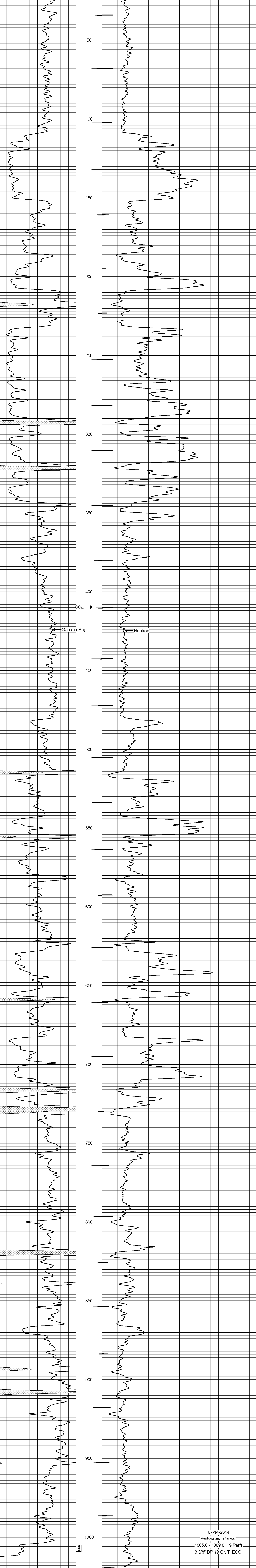
BORE-HOLE RECORD				CASING RECORD			
Run	BIT	FROM	TO	SIZE	WGT	FROM	TO
One	12.25"	0.0	20.0	8.625"	24.0 #	0.0	20.0
Two	6.75"	20.0	1026.0	4.50"	10.5 #	0.0	1018.95

<<< Fold Here >>>
 All interpretations are opinions based on inferences from electrical or other measurements and we cannot and do not guarantee the accuracy or correctness of any interpretation, and we shall not, except in the case of gross or willful negligence on our part, be liable or responsible for any loss, costs, damages, or expenses incurred or sustained by anyone resulting from any interpretation made by any of our officers, agents or employees. These interpretations are also subject to our general terms and conditions set out in our current Price Schedule.

Comments

Drilling Contractor :
Town Oilfield Services, Inc.

Database File: **trester1hp.db**
 Dataset Pathname: **pass1**
 Presentation Format: **gr-n-ccl**
 Dataset Creation: **Wed Jul 09 11:17:24 2014 by Log SCH 111116**
 Charted by: **Depth in Feet scaled 1:240**



07-14-2014
 Perforated Interval
 1005.0 - 1009.0 9 Perfs
 3 3/8" DP 19 Gr. T. ECG