



MIDWEST SURVEYS
 LOGGING - PERFORATING - CONSUL TING SERVICES
 P.O. Box 68, Osawatomie, KS 66064
 913 / 755 - 2128

GAMMA RAY / NEUTRON / CCL

File No. _____
 Company **Haas Petroleum, LLC.**
 Well **Trester No. 5-HP**
 Field **Iola**
 County **Allen** State **Kansas**

Location **845 FNL & 3060 FEL**
NW-SE-NE-NW

Other Services
 Perforate

Sec. 8
 Permament Datum **GL**
 Log Measured From **GL**
 Drilling Measured From **GL**

Date **07-09-2014**
 Run Number **One**
 Depth Logger **1022.0**
 Bottom Logged Interval **1017.0**
 Top Log Interval **20.0**
 Fluid Level **Full**

Type Fluid **Water**
 Density / Viscosity **NA**
 Salinity - PPM Cl **NA**
 Max Recorded Temp **NA**
 Estimated Cement Top **0.0**

Equipment No. **102**
 Recorded By **Gary Windisch**
 Witnessed By **John Haas**

BORE-HOLE RECORD
 RUN No. **BIT FROM TO**
 One **9.815' 20.0 20.0**
 Two **5.625' 20.0 1022.0**

CASING RECORD
 WGT. **WTG. FROM TO**
 One **17.0# 0.0 20.0**
 Two **6.5# 0.0 1018.0**

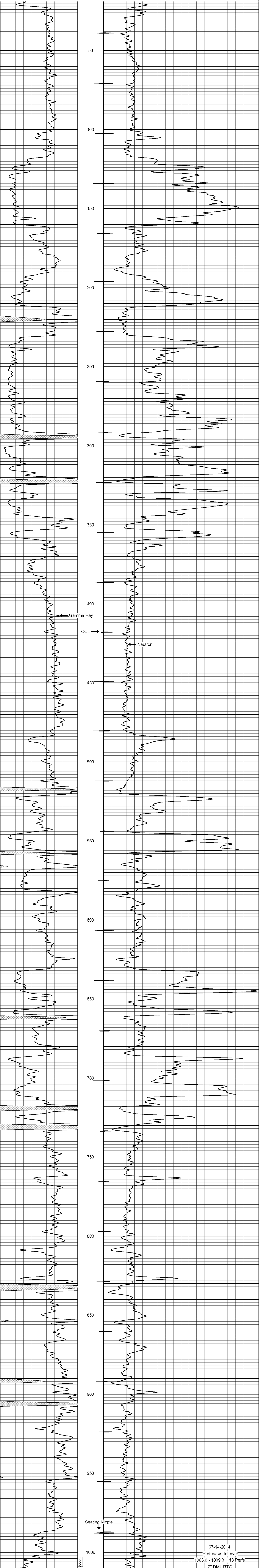
<<< Fold Here >>>

All interpretations are opinions based on inferences from electrical or other measurements and we cannot and do not guarantee the accuracy or correctness of any interpretation, and we shall not, except in the case of gross or willful negligence on our part, be liable or responsible for any loss, costs, damages, or expenses incurred or sustained by anyone resulting from any interpretation made by any of our officers, agents or employees. These interpretations are also subject to our general terms and conditions set out in our current Price Schedule.

Comments

Drilling Contractor :
Town Oilfield Services, Inc.

Database File: **trester5hp.db**
 Dataset Pathname: **pass1**
 Presentation Format: **gr-n-ccl**
 Dataset Creation: **Wed Jul 09 12:05:43 2014 by Log SCH 111116**
 Charted by: **Depth in Feet scaled 1:240**



07-14-2014
 Perforated Interval
 1003.0 - 1009.0 13 Perfs
 2" DML RTG