



Pioneer Energy Services

Gamma Ray / Caliper Log

15-153-21,007-00-00

API No.

Company: Forestar Petroleum Corporation
 Well: K&K No. 2-31
 Field: Beaver Creek
 County: Rawlins
 State: Kansas

Location: SW-SE-SW-NW
 2500' FNL & 900' FWL

Sec: 31 Twp: 1S Rge: 31W

Other Services
 DIL
 MEL

Permanent Datum: Ground Level Elevation 2870

Log Measured From: Kelly Bushing 6 Ft. Above Perm. Datum

Drilling Measured From: Kelly Bushing

Elevation
 K.B. 2876
 D.F. 2870
 G.L. 2870

Date: 5/14/2014

Run Number: One

Type Log: Bhv

Depth Driller: 4150

Depth Logger: 4151

Bottom Logged Interval: 4130

Top Logged Interval: 200

Type Fluid In Hole: Chemical

Salinity, PPM CL: 500

Density: 9.1

Level: Full

Max. Rec. Temp. F: 118

Operating Rig Time: 4 Hours

Equipment -- Location: 108 Hays

Recorded By: J. Henrickson

Witnessed By: Charles Sturdavant

Witnessed By: Charles Sturdavant

Witnessed By: Charles Sturdavant

Witnessed By: Charles Sturdavant

Witnessed By: Charles Sturdavant

Witnessed By: Charles Sturdavant

Witnessed By: Charles Sturdavant

Witnessed By: Charles Sturdavant

Witnessed By: Charles Sturdavant

Borehole Record

Casing Record

Run No.	Bit	From	To	Size	Wgt.	From	To
One	12.25	0	218	8.625	23#	0	218
Two	7.875	218	TD				

Run No.	Bit	From	To	Size	Wgt.	From	To
One	12.25	0	218	8.625	23#	0	218
Two	7.875	218	TD				

Run No.	Bit	From	To	Size	Wgt.	From	To
One	12.25	0	218	8.625	23#	0	218
Two	7.875	218	TD				

Run No.	Bit	From	To	Size	Wgt.	From	To
One	12.25	0	218	8.625	23#	0	218
Two	7.875	218	TD				

Run No.	Bit	From	To	Size	Wgt.	From	To
One	12.25	0	218	8.625	23#	0	218
Two	7.875	218	TD				

Run No.	Bit	From	To	Size	Wgt.	From	To
One	12.25	0	218	8.625	23#	0	218
Two	7.875	218	TD				

<<< Fold Here >>>

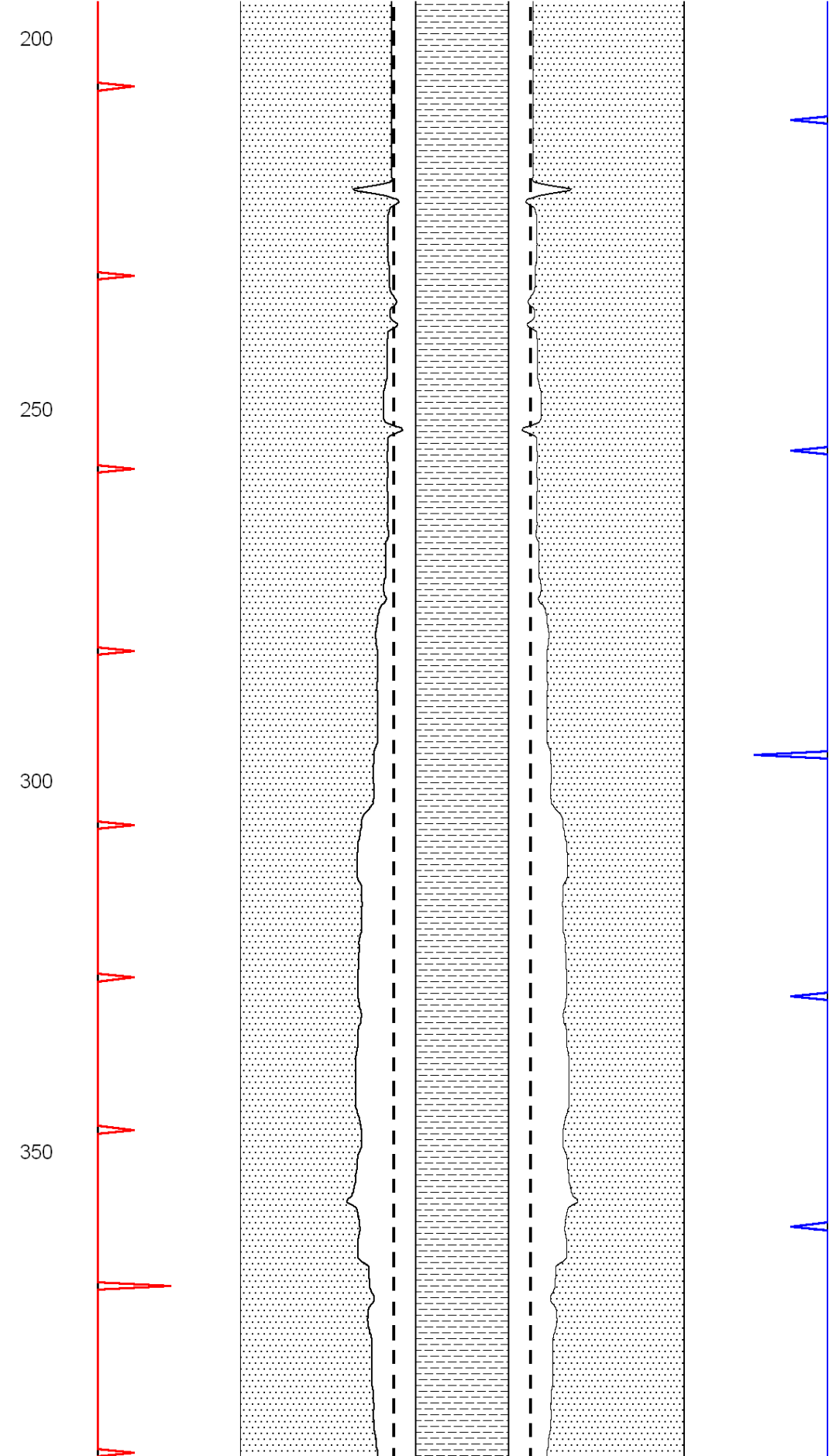
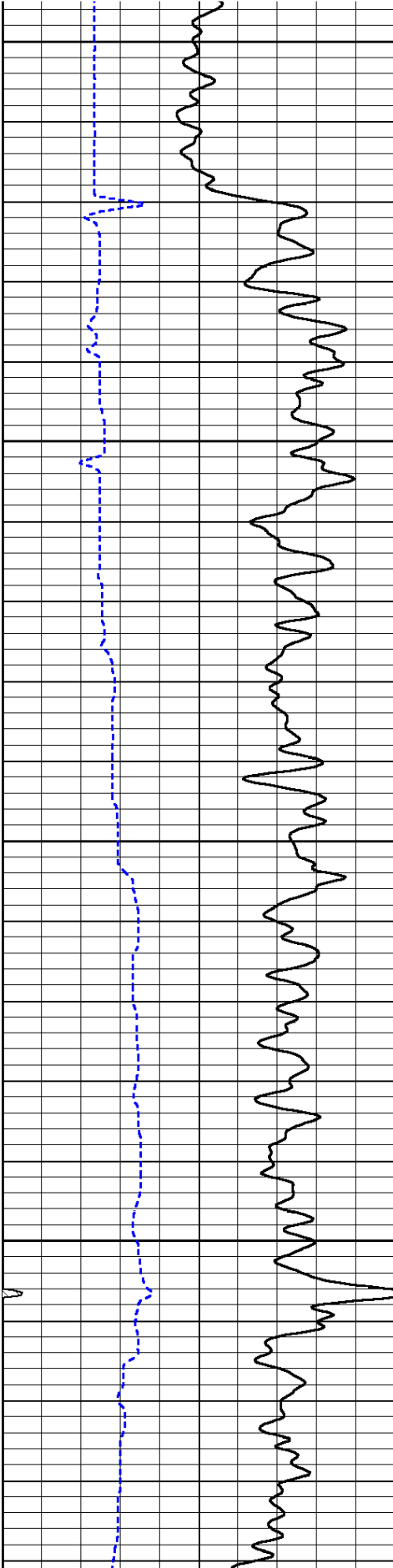
All interpretations are opinions based on inferences from electrical or other measurements and we cannot and do not guarantee the accuracy or correctness of any interpretation, and we shall not, except in the case of gross or willful negligence on our part, be liable or responsible for any loss, costs, damages, or expenses incurred or sustained by anyone resulting from any interpretation made by any of our officers, agents or employees. These interpretations are also subject to our general terms and conditions set out in our current Price Schedule.

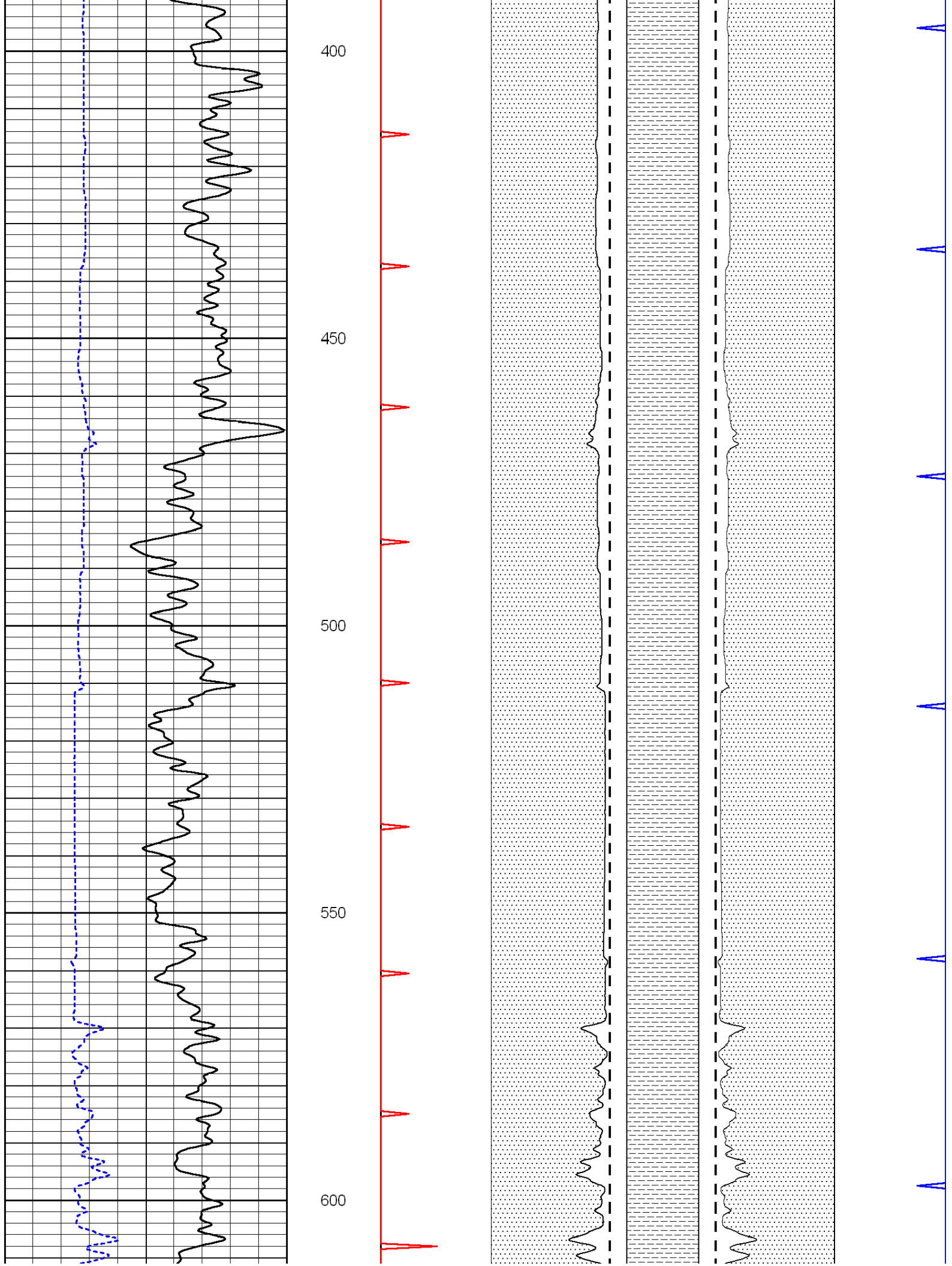
Comments

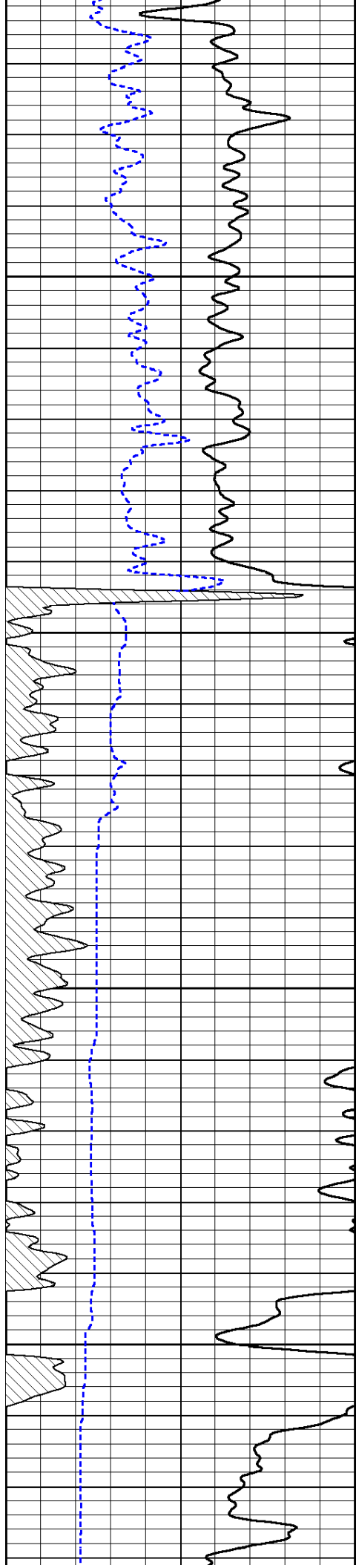
Thank you for using Pioneer Energy Services
 ☐☐ 785.625.3858
 Herndon Kansas
 North Edge of Town, 3 1/2 West, 1 North, 1/2 West, South Into

0	Gamma Ray (GAPI)	150
150	GR (GAPI)	300
6	DCAL (in)	16

0	Borehole Volume (ft3)	10	10	Annular Volume (ft3)	0
---	-----------------------	----	----	----------------------	---





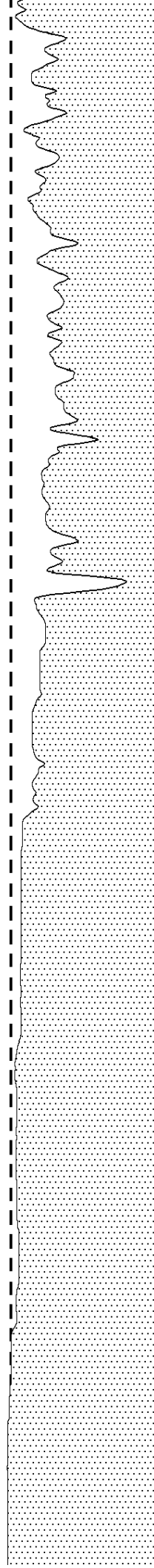
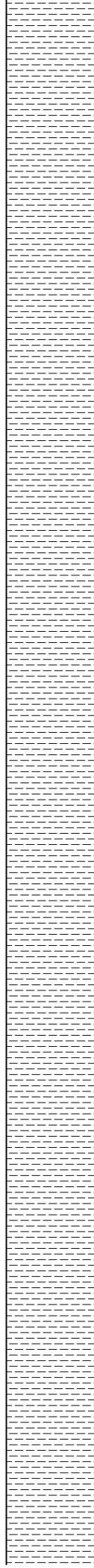
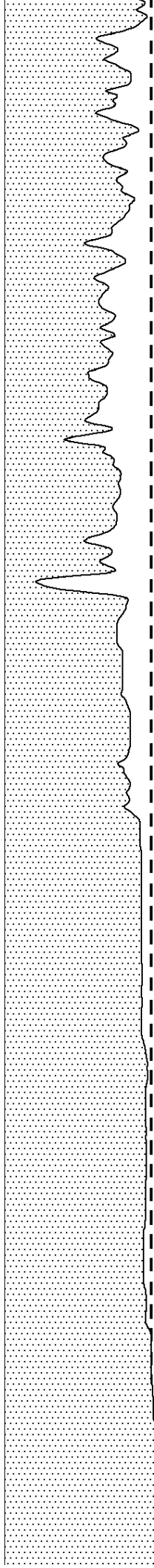


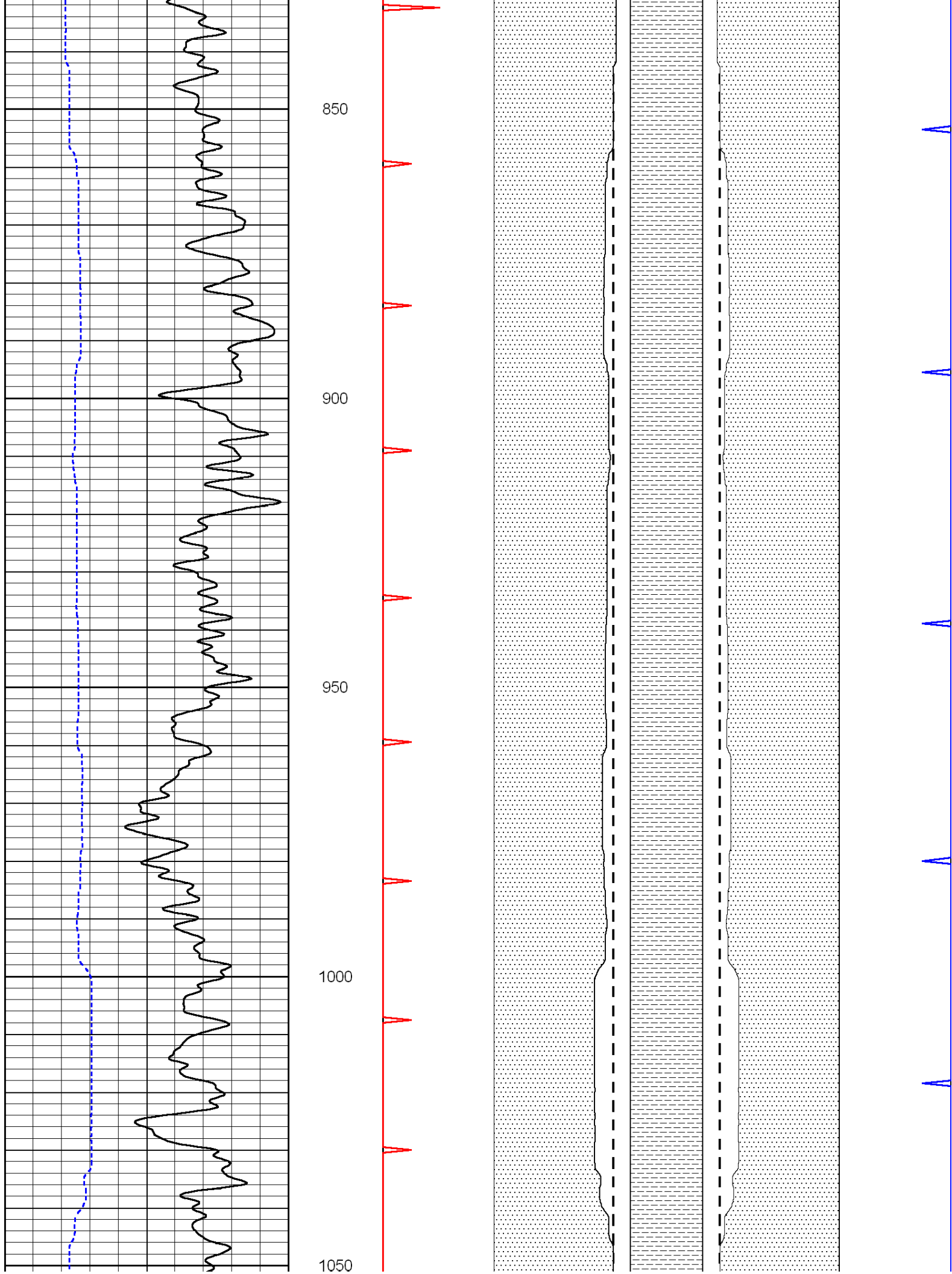
650

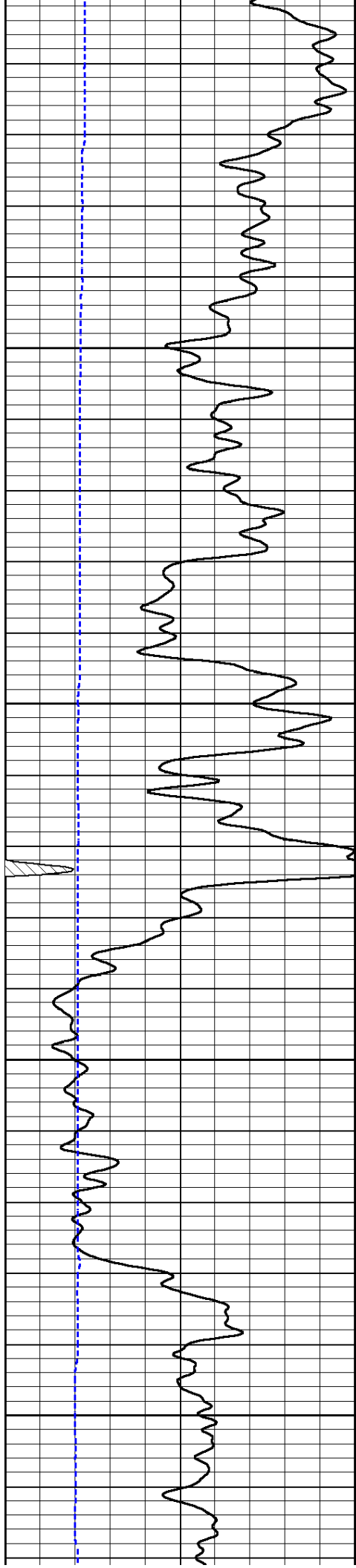
700

750

800





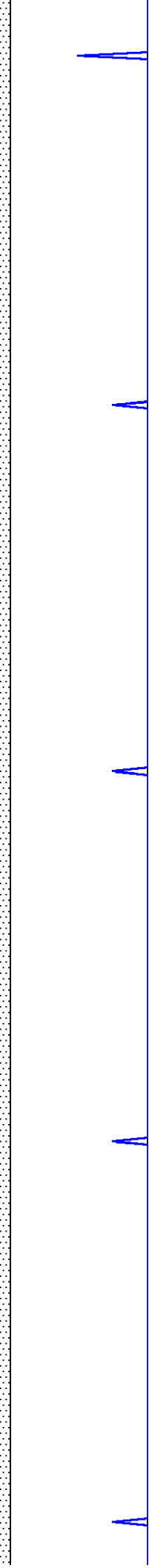
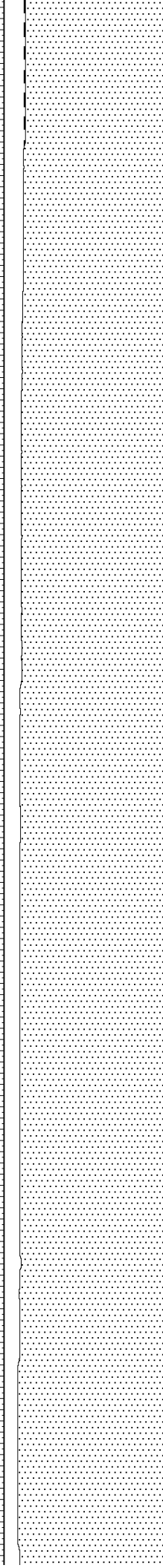
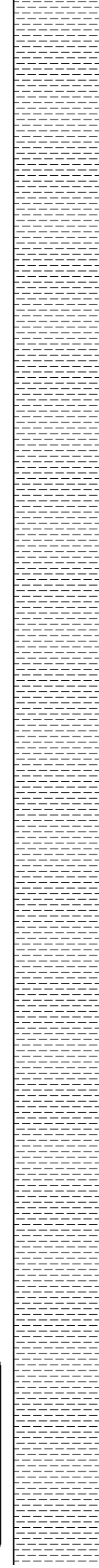
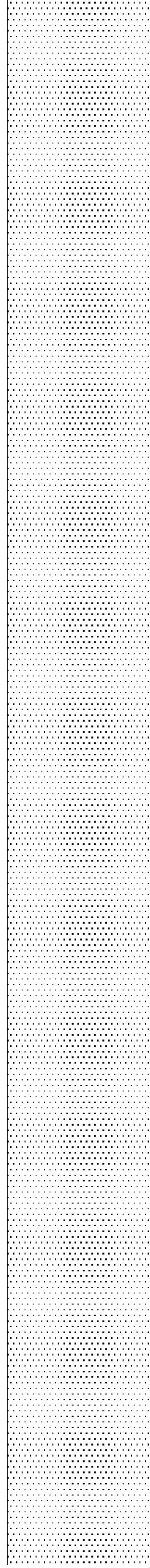
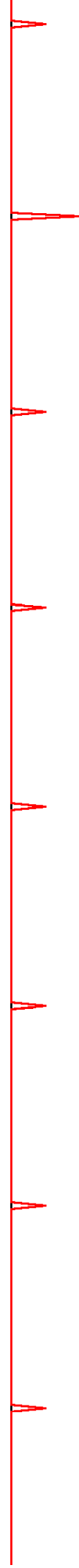


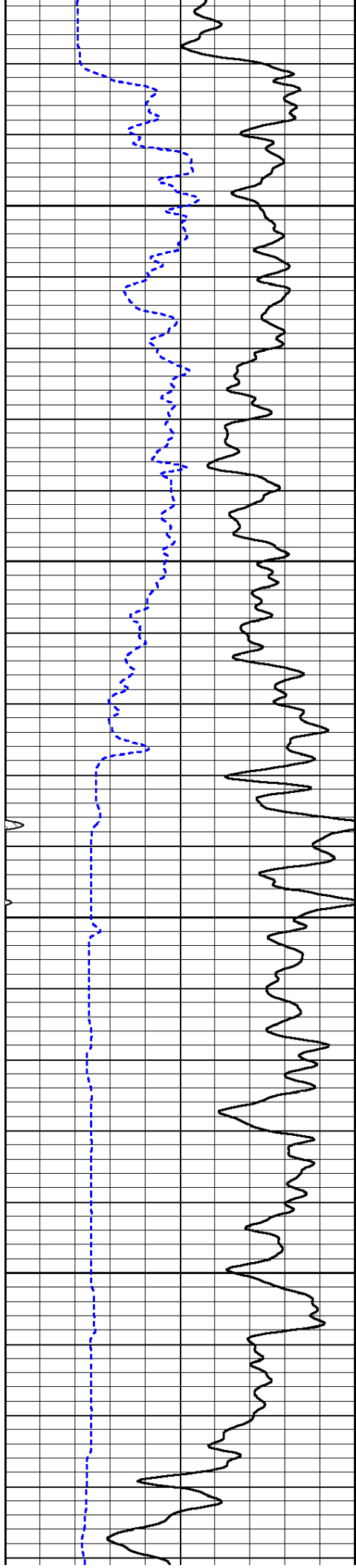
1100

1150

1200

1250



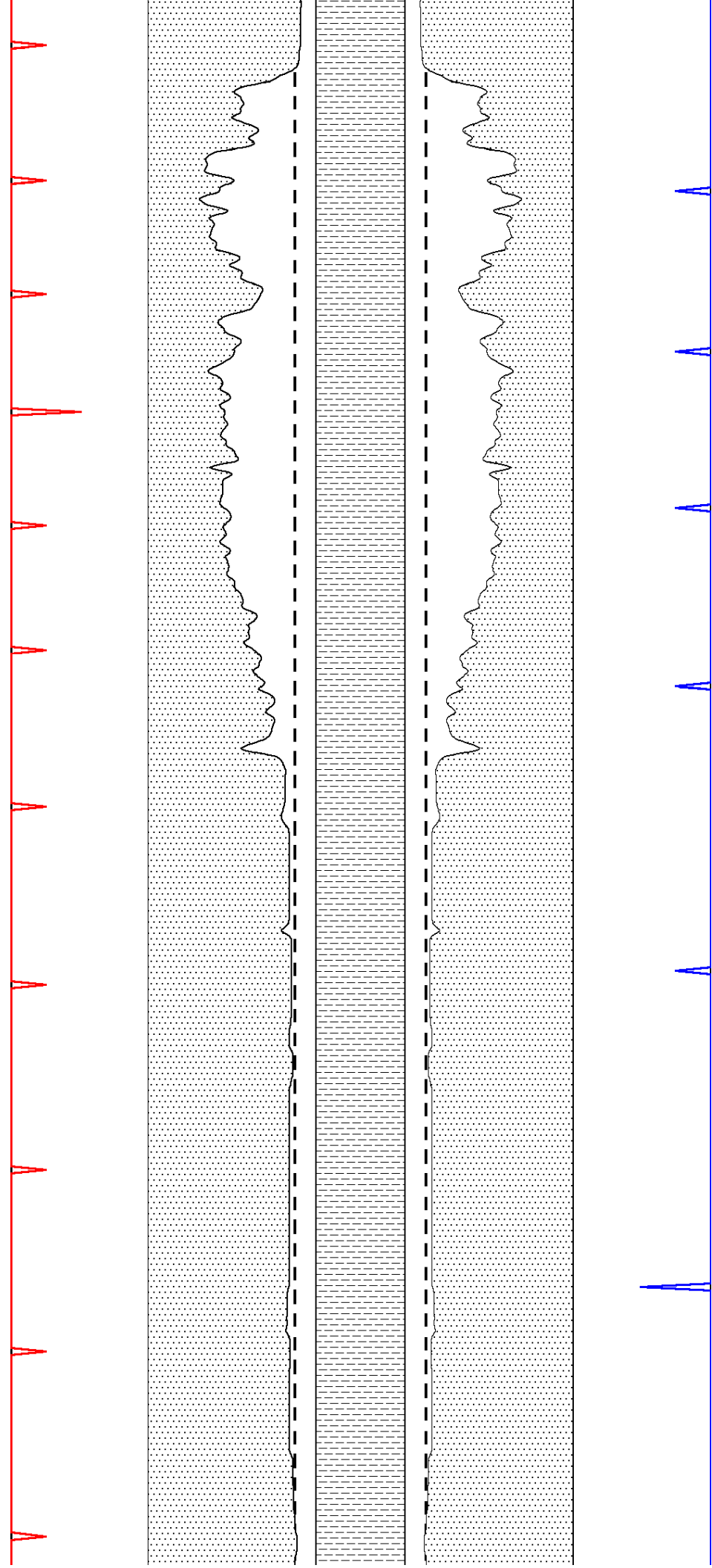


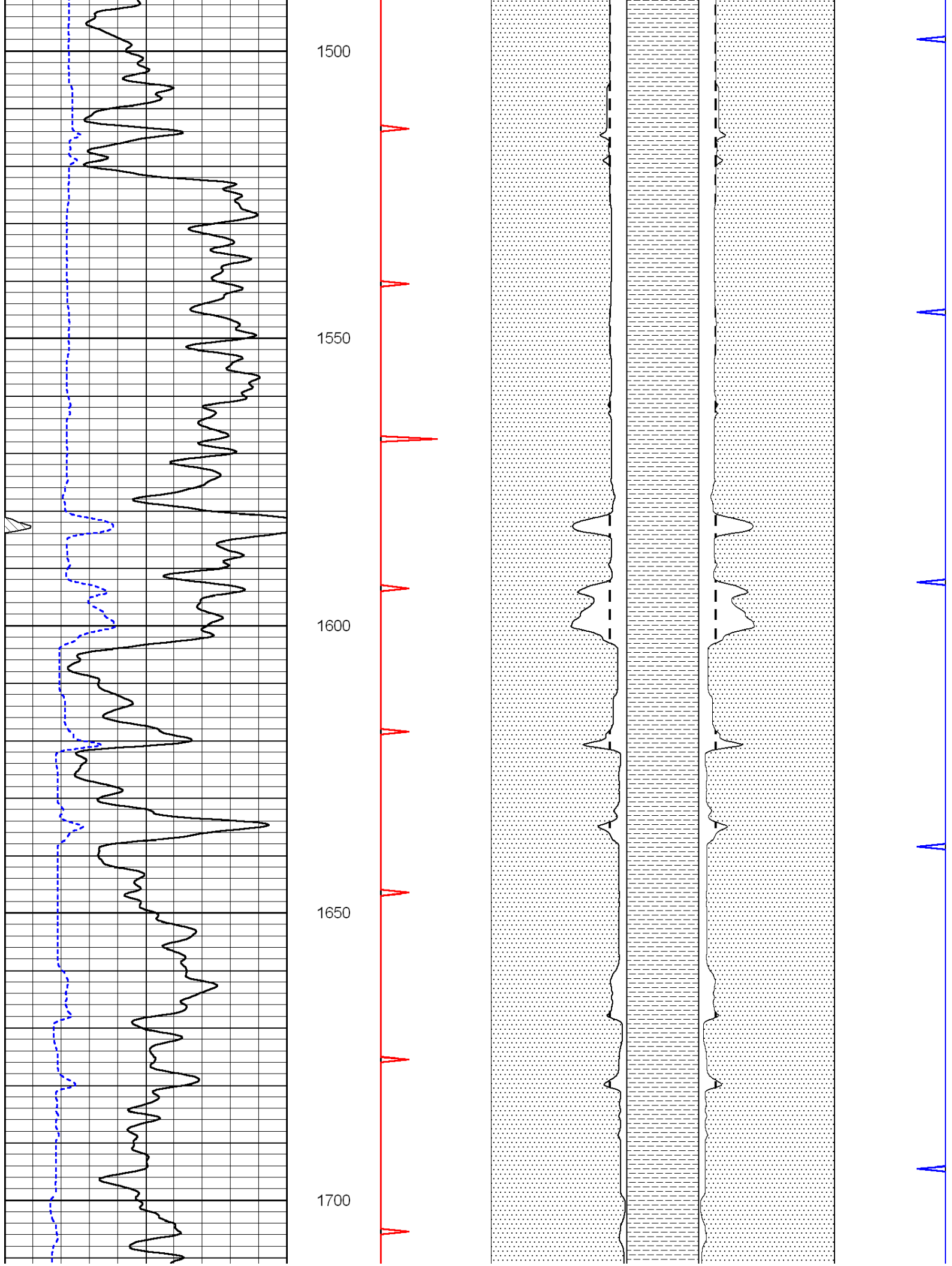
1300

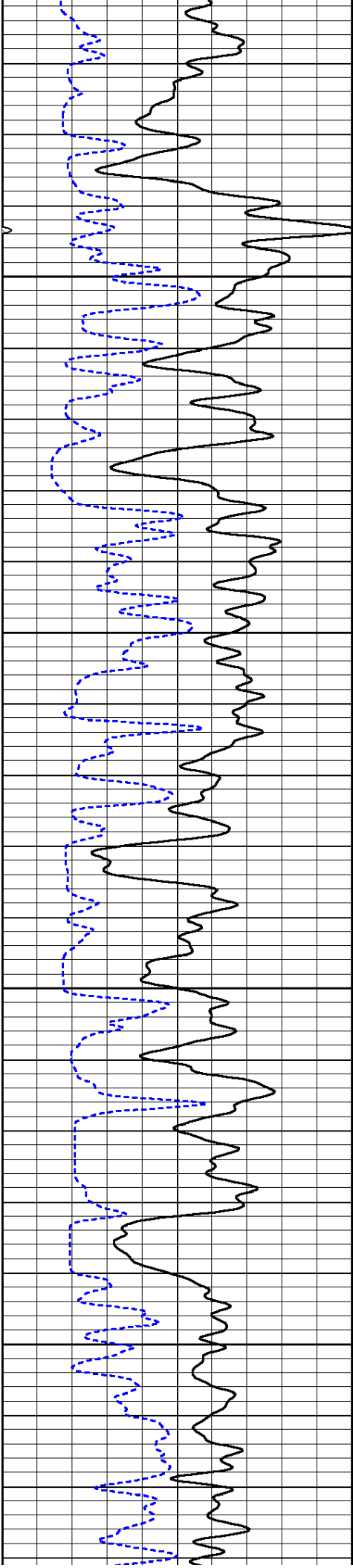
1350

1400

1450





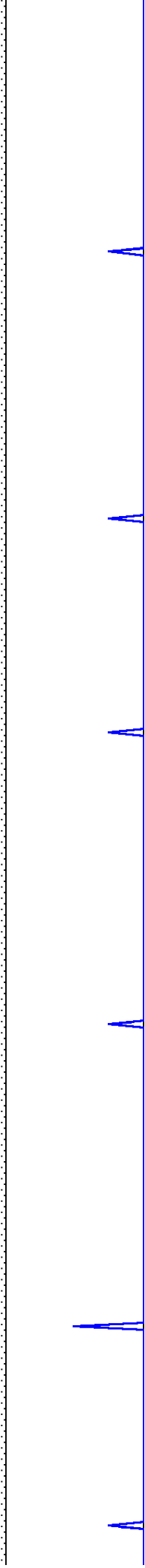
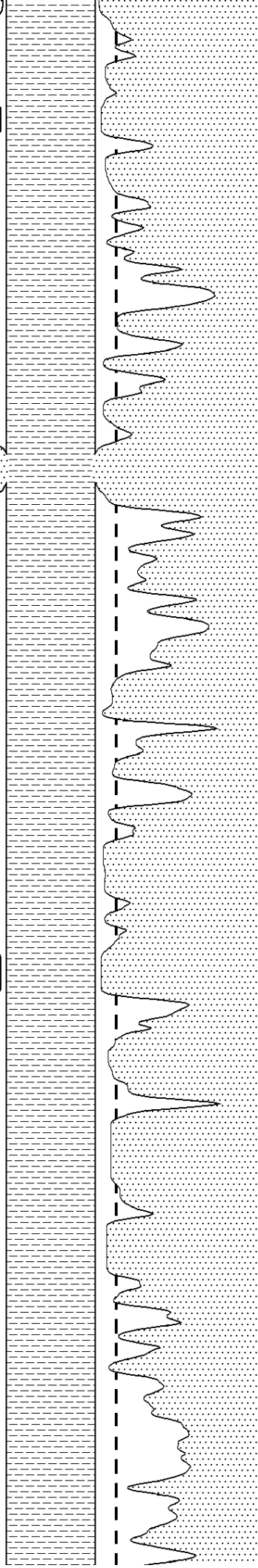
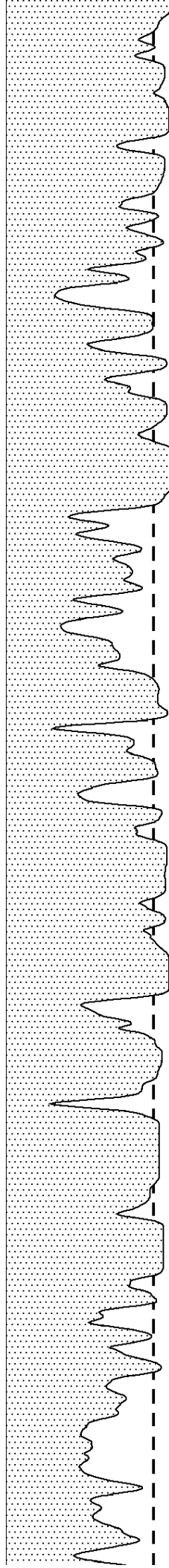


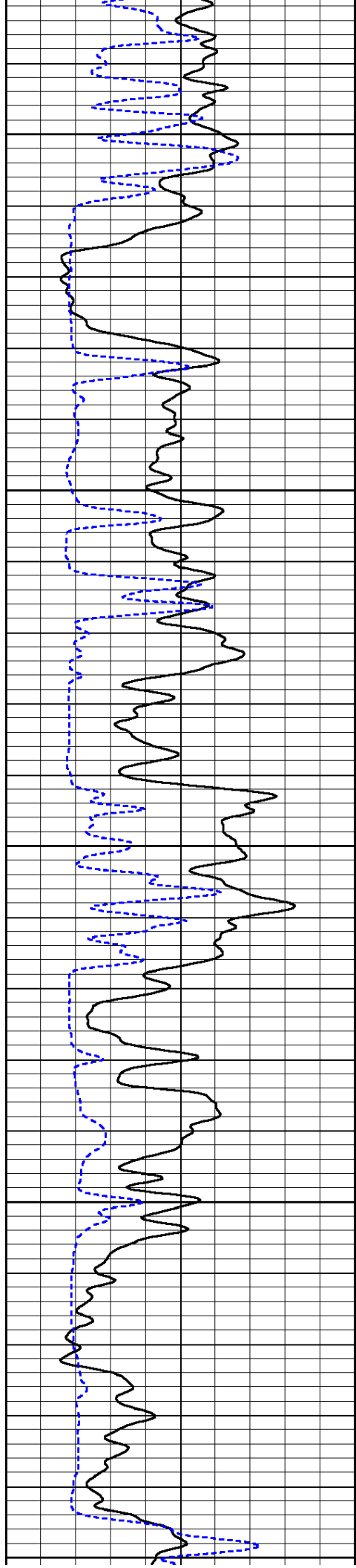
1750

1800

1850

1900





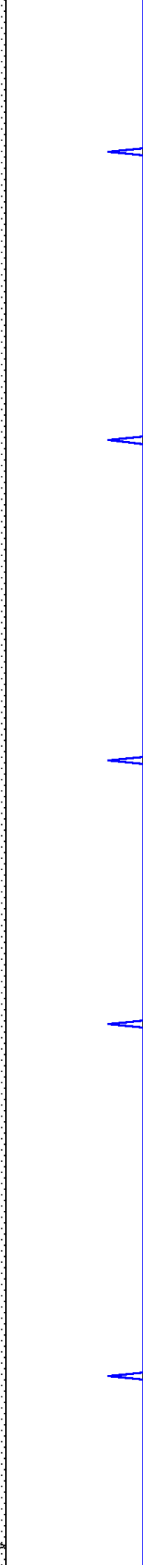
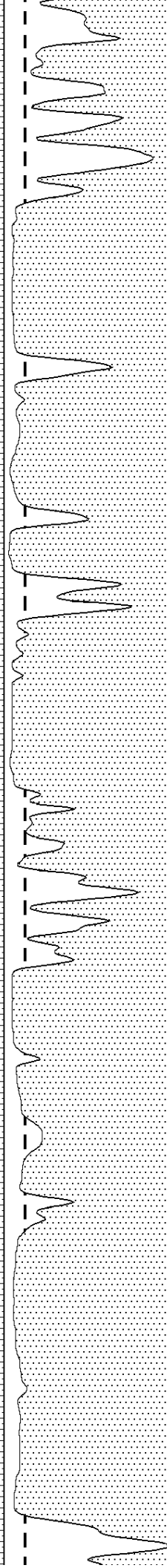
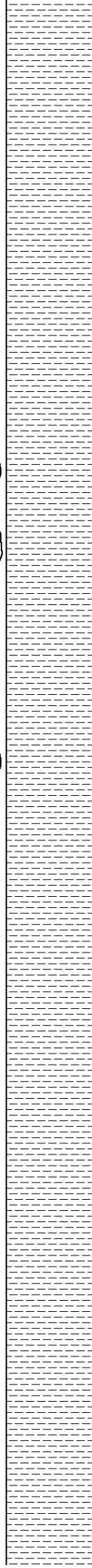
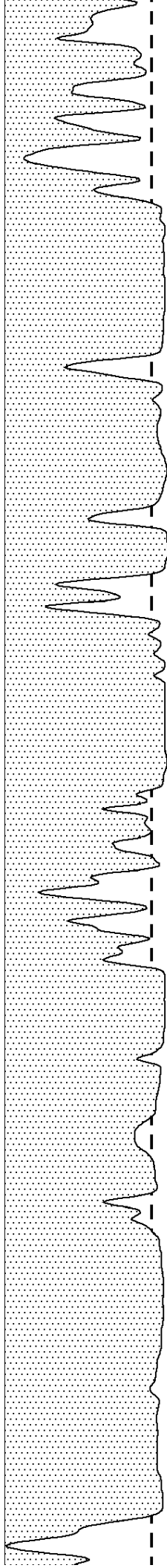
1950

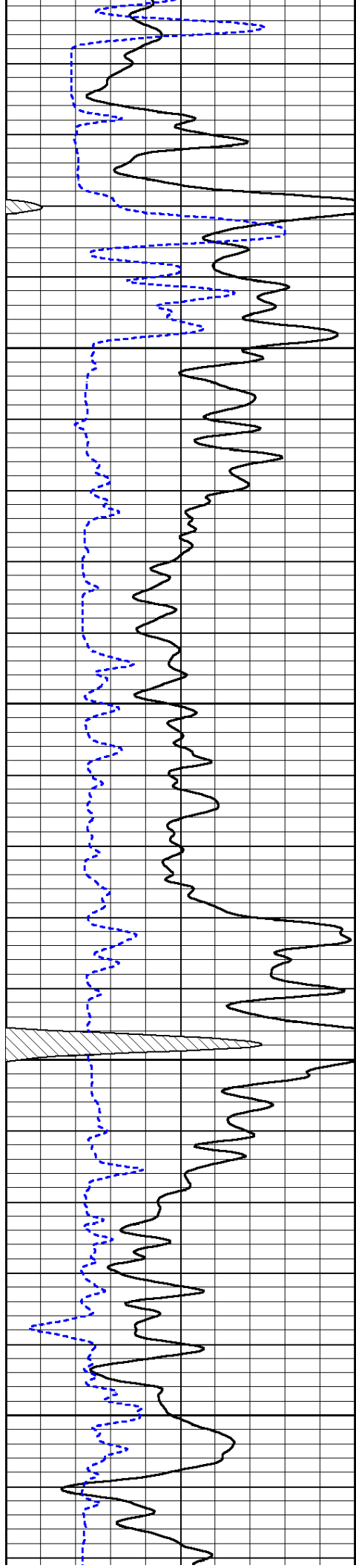
2000

2050

2100

2150



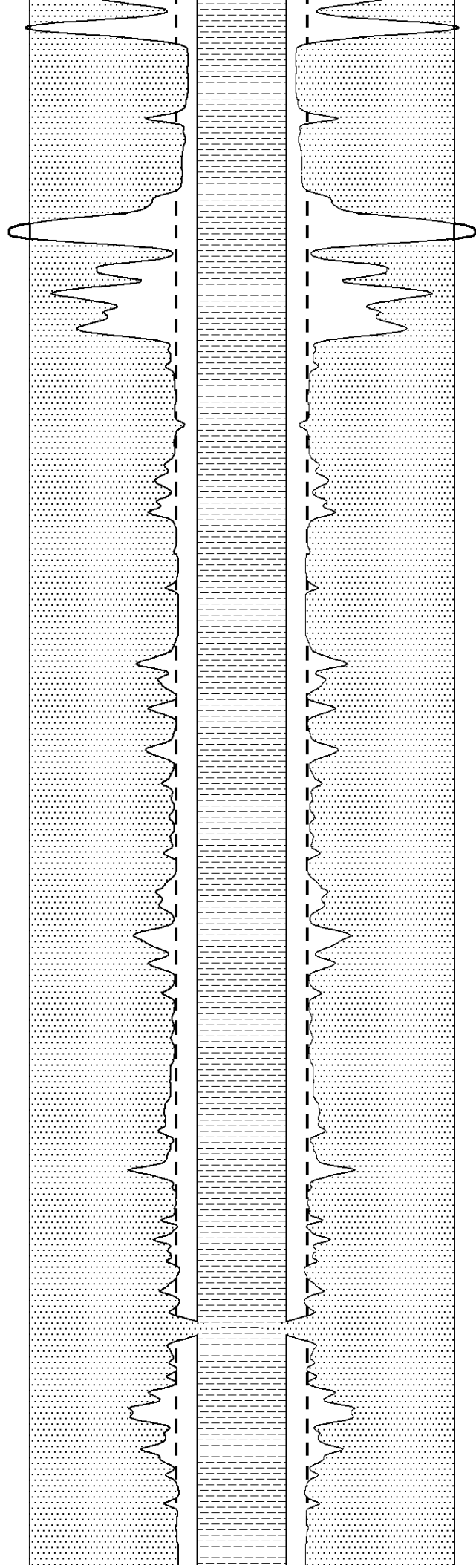


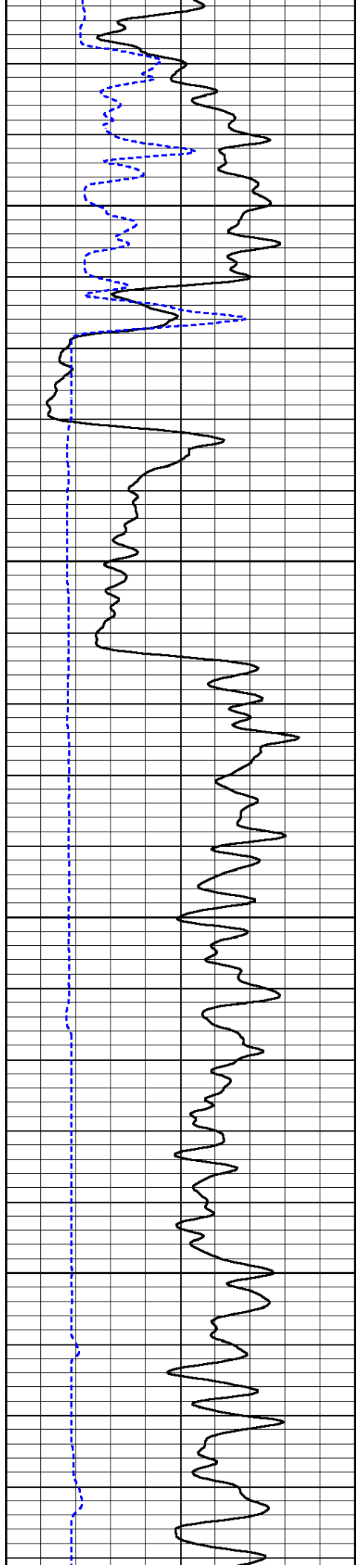
2200

2250

2300

2350



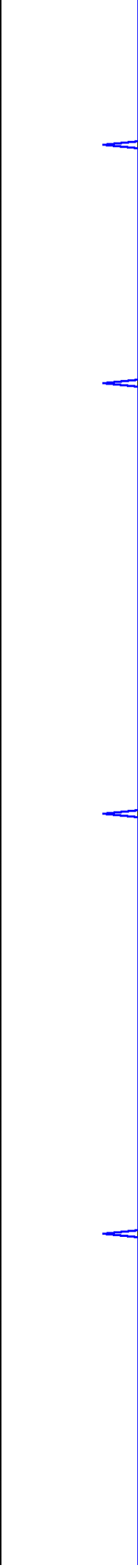
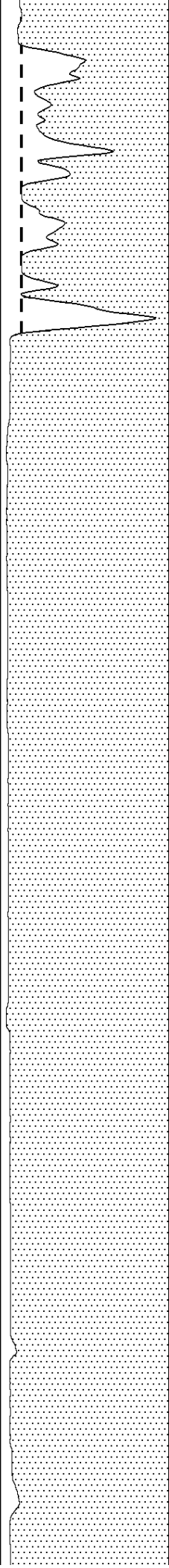
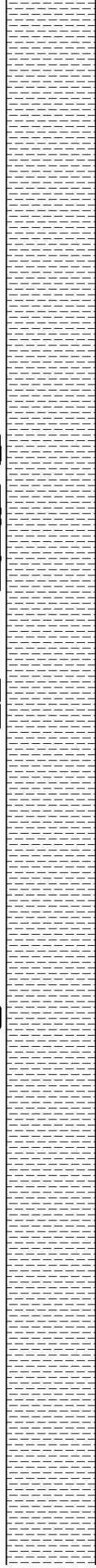
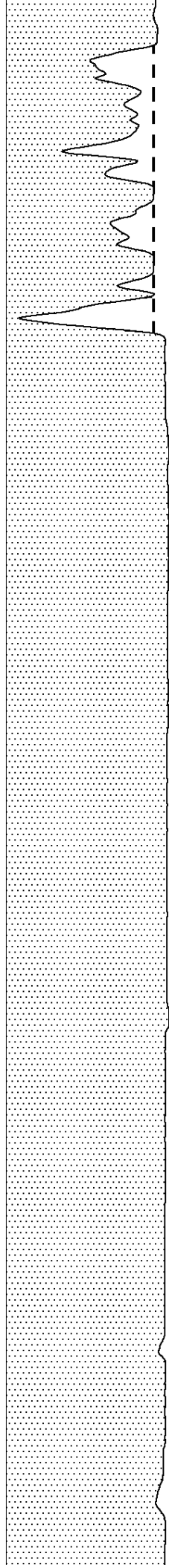


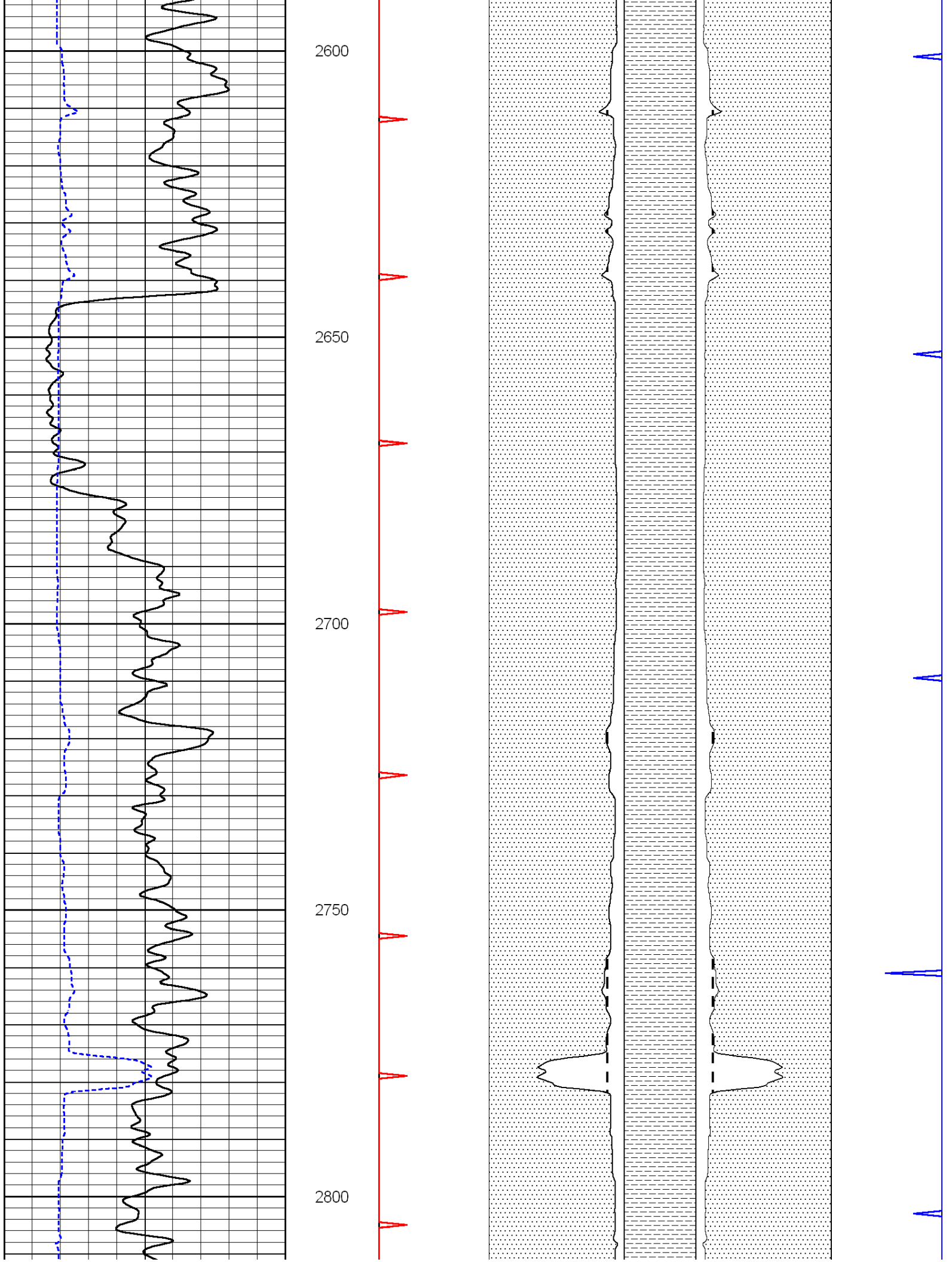
2400

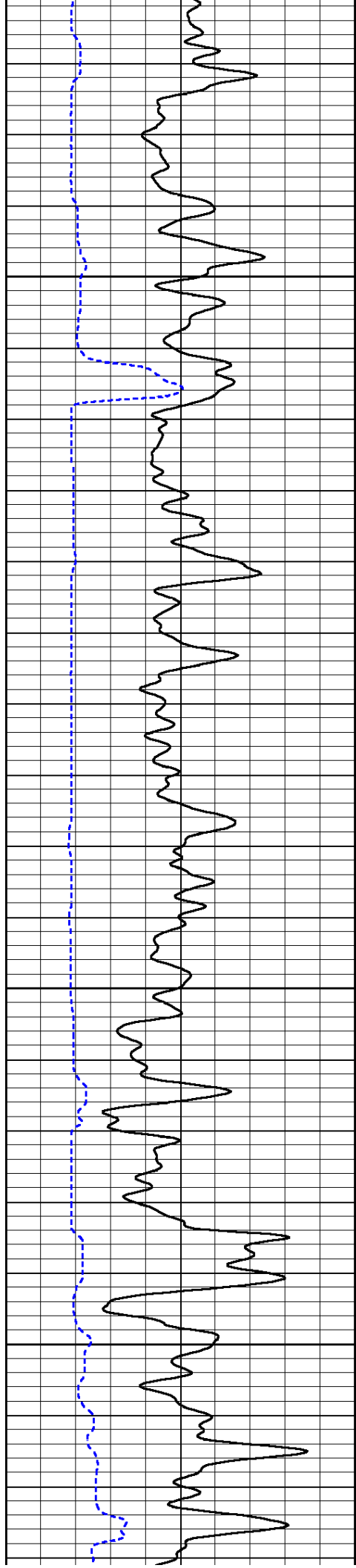
2450

2500

2550





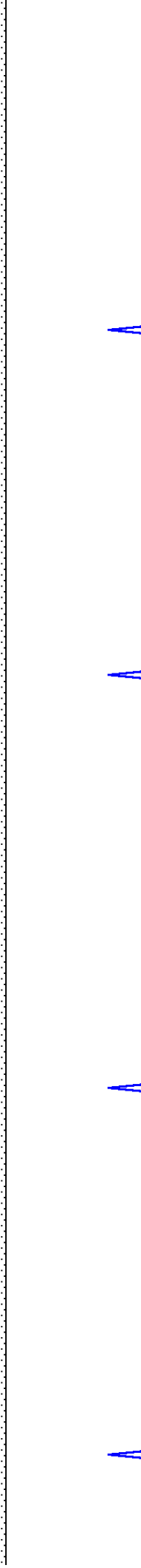
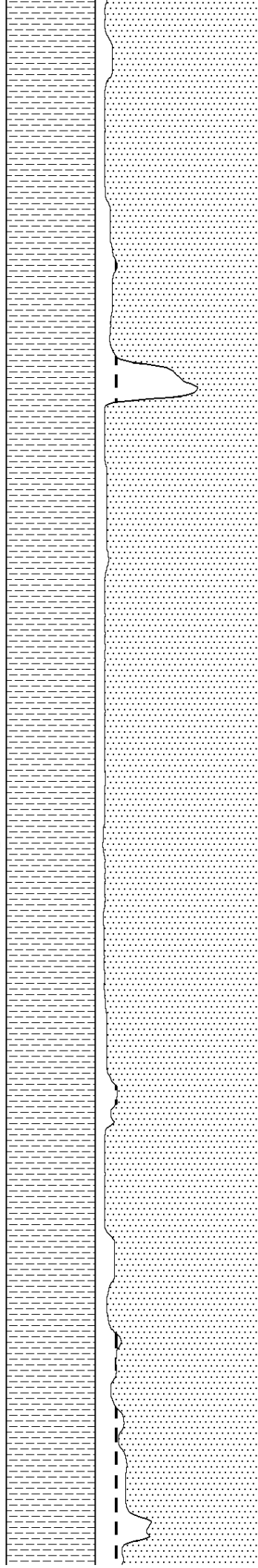
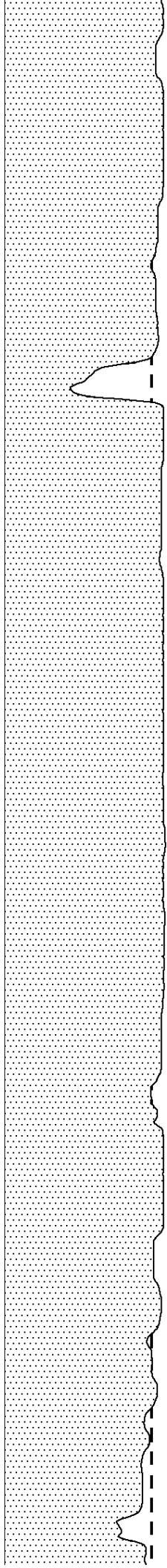


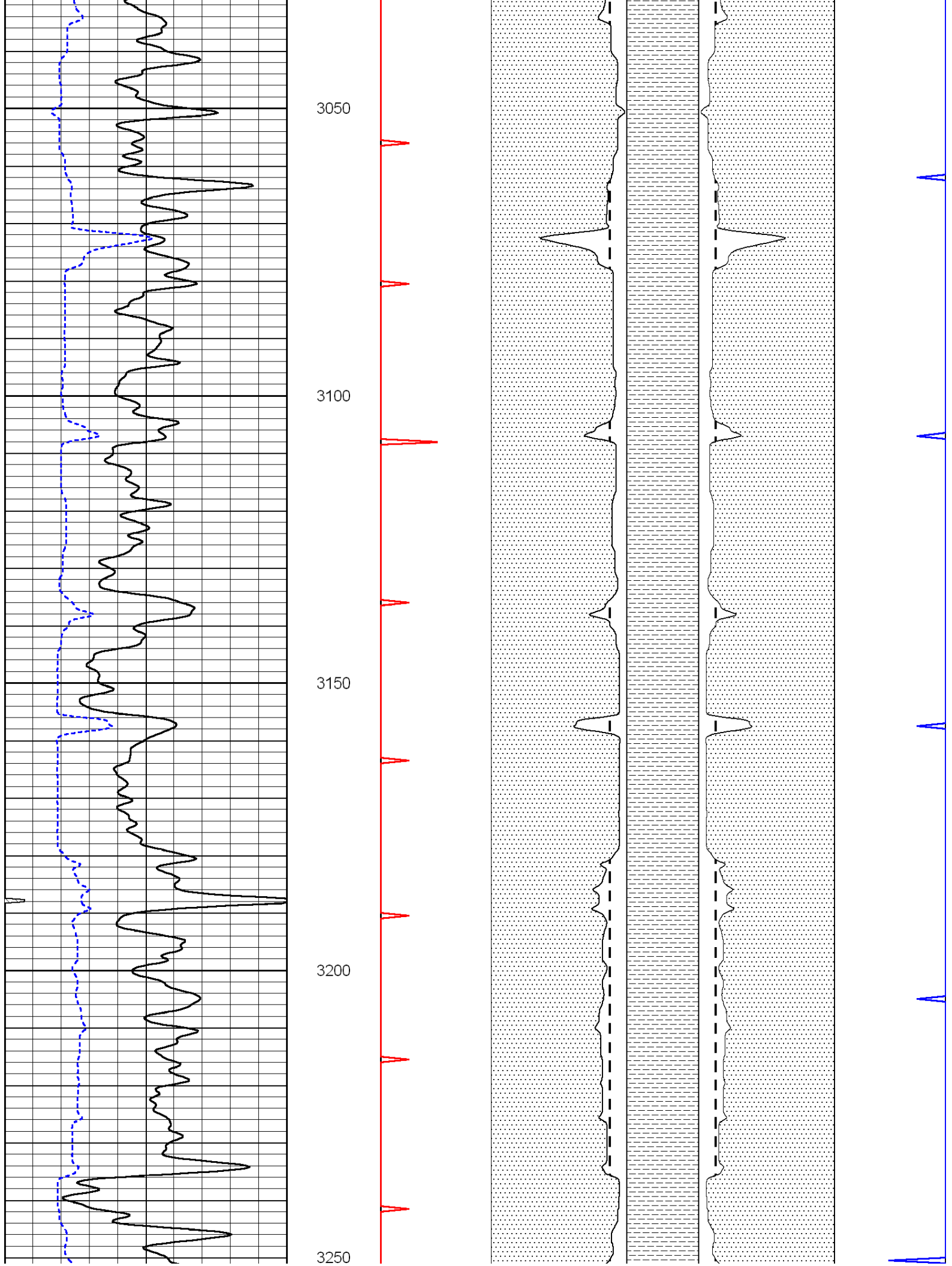
2850

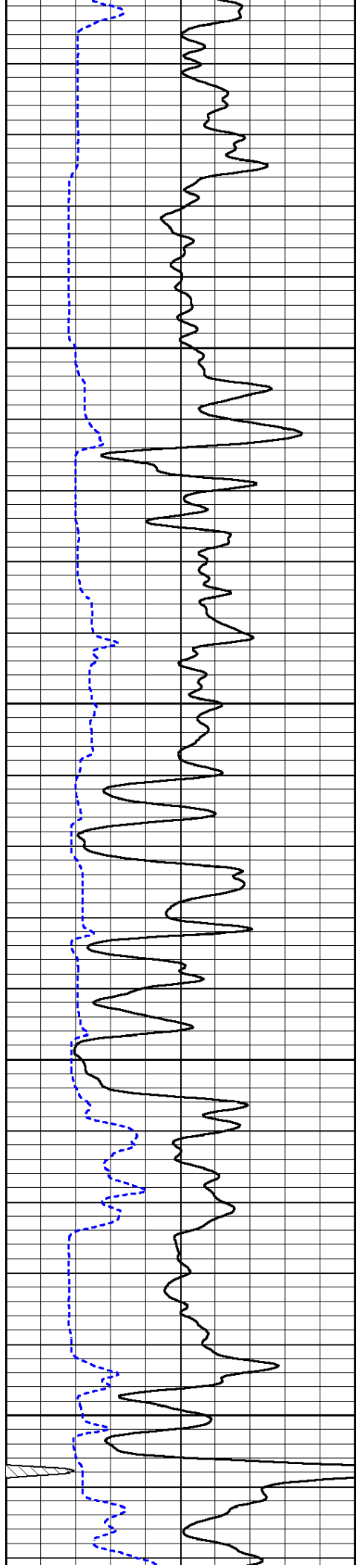
2900

2950

3000





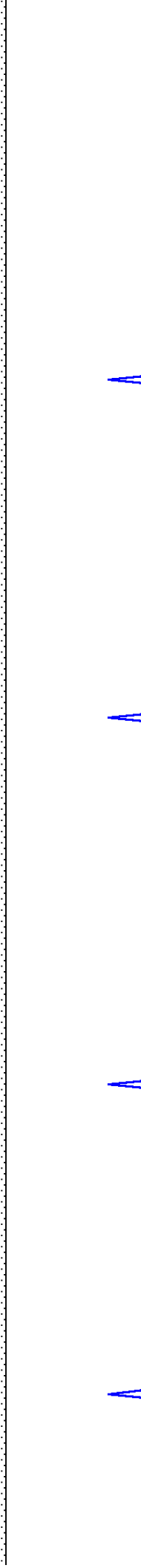
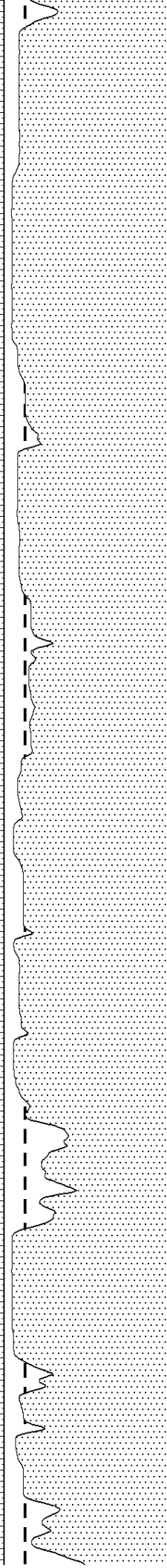
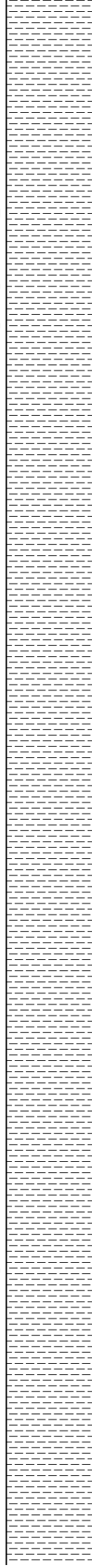
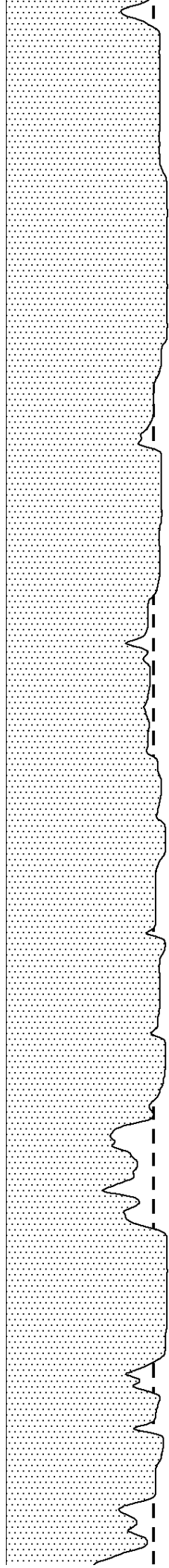


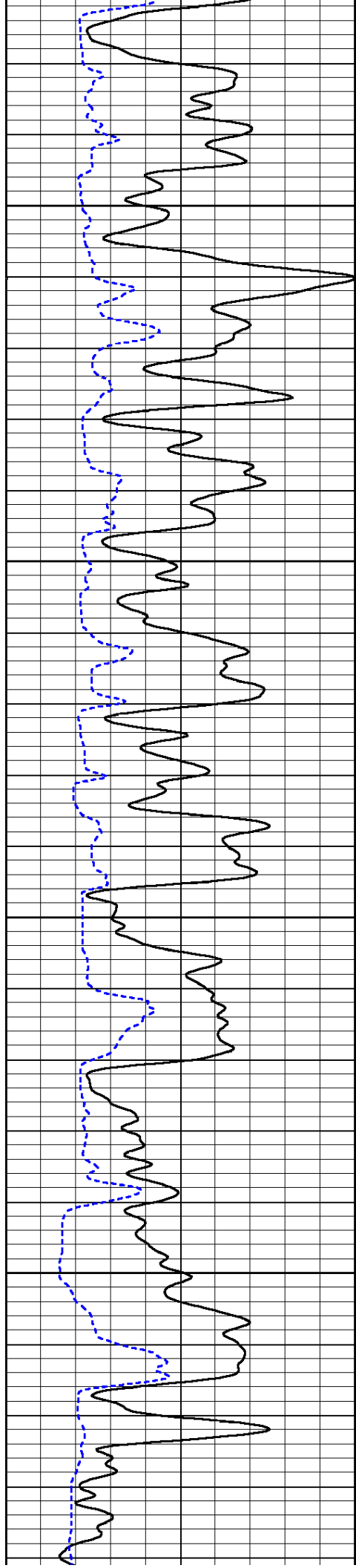
3300

3350

3400

3450



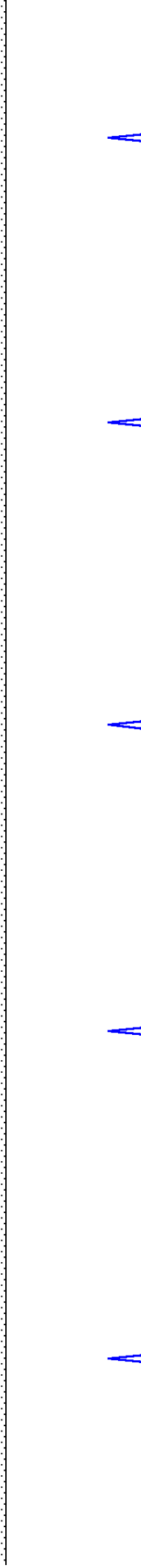
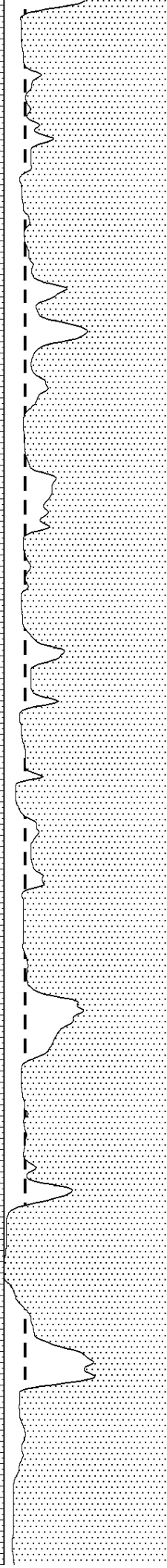
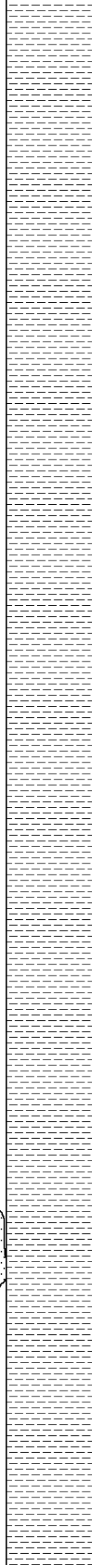
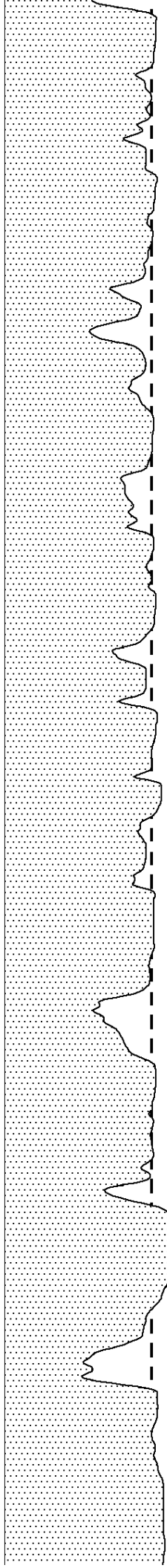
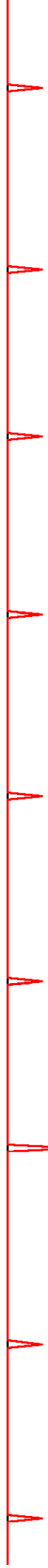


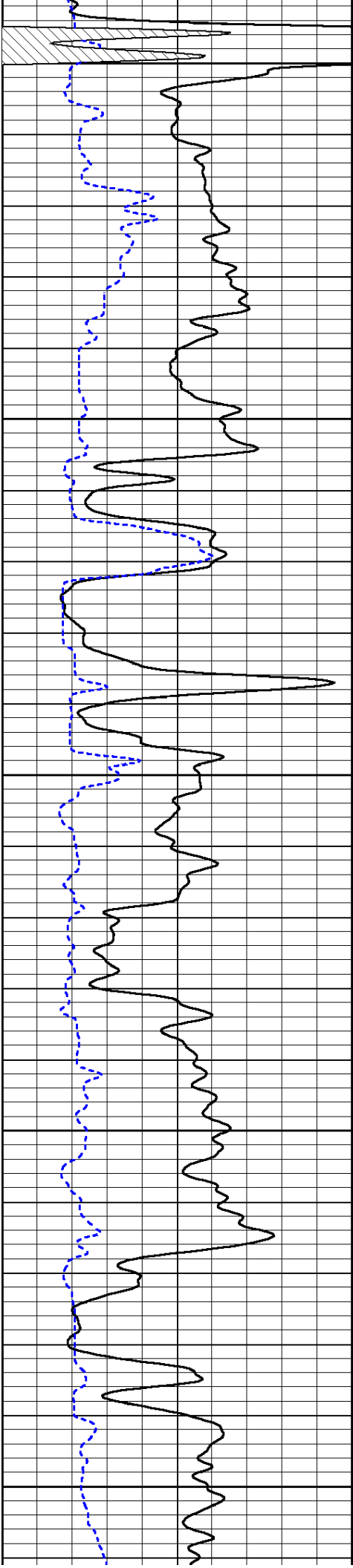
3500

3550

3600

3650





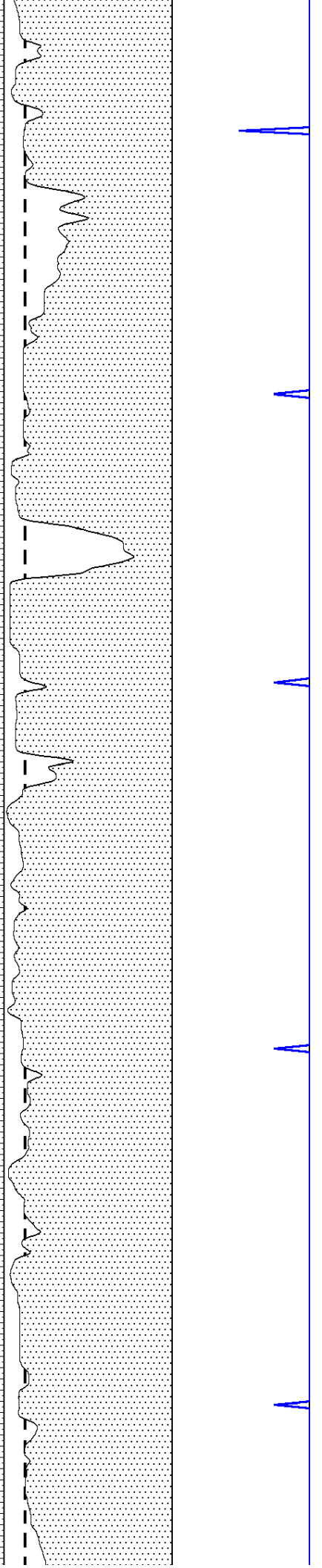
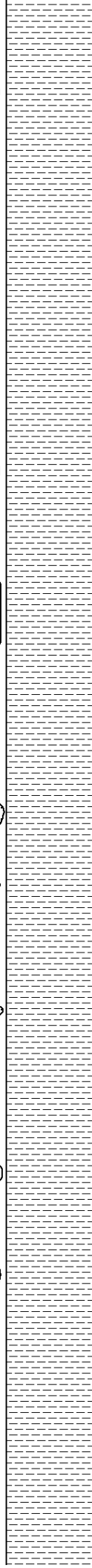
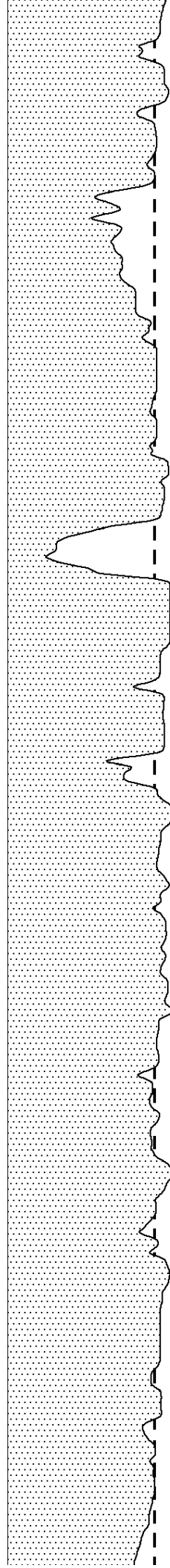
3700

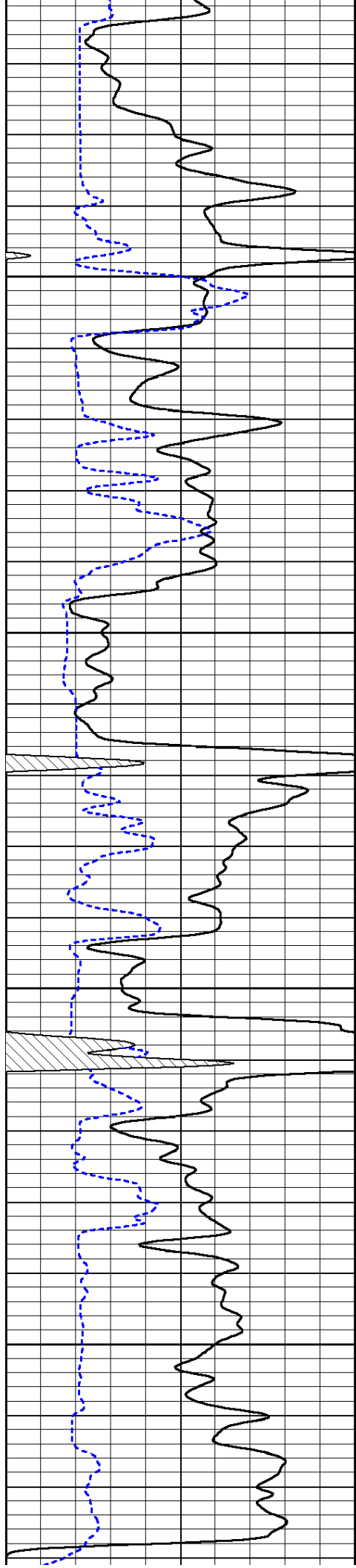
3750

3800

3850

3900



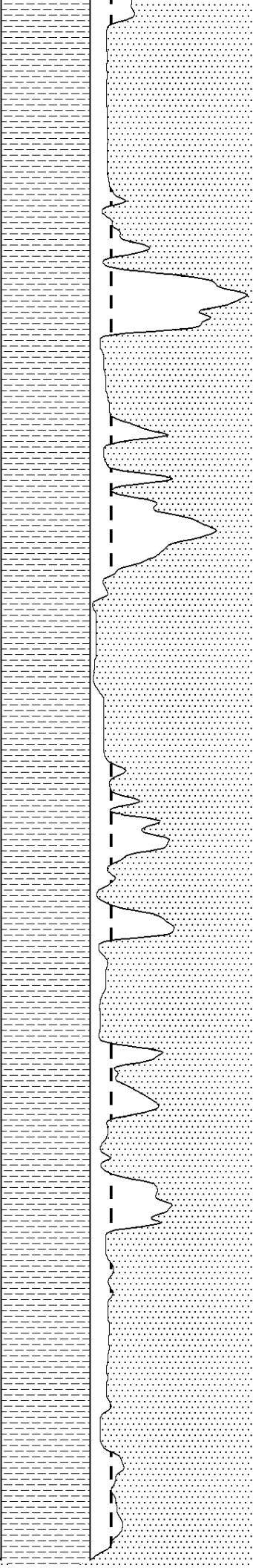
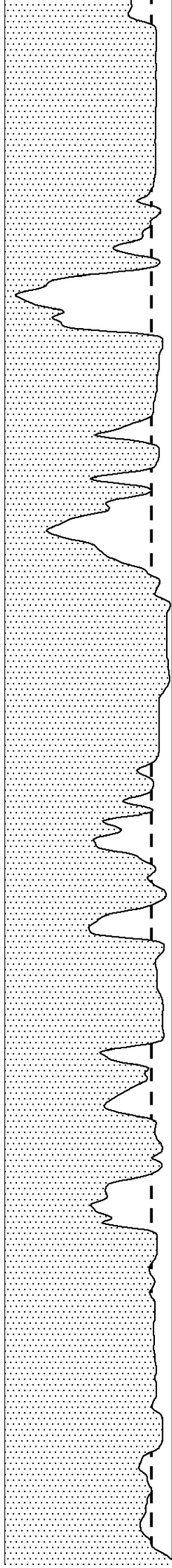


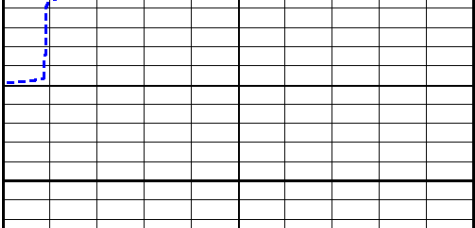
3950

4000

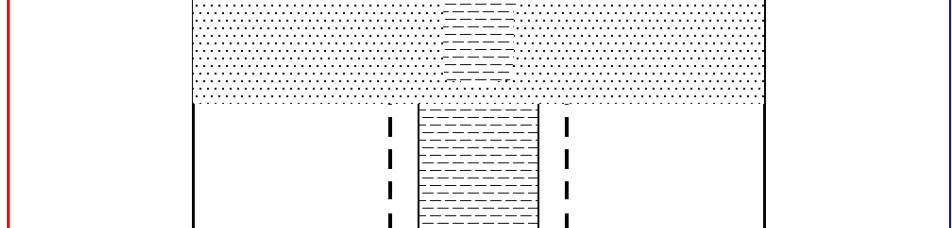
4050

4100





4150



0	Gamma Ray (GAPI)	150
150	GR (GAPI)	300
6	DCAL (in)	16

0	Borehole Volume (ft3)	10	10	Annular Volume (ft3)	0
---	-----------------------	----	----	----------------------	---