



Pioneer Energy Services

Sector Bond / Gamma Ray
CCL Log

15-153-21,007-00-00

Company **Forestar Petroleum Corporation**
Well **K&K No. 2-31**
Field **Beaver Creek**
County **Rawlins** State **Kansas**

Location

2500' FNL & 900' FWL

Other Services

Sec: 31 Twp: 1S Rge: 31W

Elevation

Permanent Datum Ground Level Elevation 2870

Log Measured From Kelly Bushing 6 Ft. Above Perm. Datum

Drilling Measured From Kelly Bushing

K.B. 2876
D.F. 2870
G.L. 2870

Run Number	One	
Date Survey	5/27/14	
Type Cementing Operation	Primary	
Depth Driller	4150	
Depth Logger	4114	
Logged Interval	4115 to 2350	
Casing Driller	5.5 @ TD	
Float Collar -- D.V. Tool	////	////
Squeeze Depth	////	////
Amount & Type Cement	////	////
Amount & Type Admix	////	////
Type Fluid In Hole	Water	
Fluid Level	Full	
Salinity PPM CL	////	////
Weight lb/gal -- Vis.	////	////
Approx. Logged Cement Top	2350	
Calculated Cement Top	////	
Max. Hole Temperature	118	
Tool No.	R #1	
Spacing Recorded	3-5'	
Equipment -- Location	72 Hays	
Recorded By	C Drelling	
Witnessed By	D Porder	

<<< Fold Here >>>

All interpretations are opinions based on inferences from electrical or other measurements and we cannot and do not guarantee the accuracy or correctness of any interpretation, and we shall not, except in the case of gross or willful negligence on our part, be liable or responsible for any loss, costs, damages, or expenses incurred or sustained by anyone resulting from any interpretation made by any of our officers, agents or employees. These interpretations are also subject to our general terms and conditions set out in our current Price Schedule.

Comments

Thank you for using Pioneer Energy Services, Inc. 785.625.3858

Herndon, Kansas

North Edge of Town, 3 1/2 West, 1 North, 1/2 West, South Into



Pioneer Energy Services

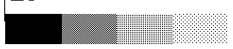
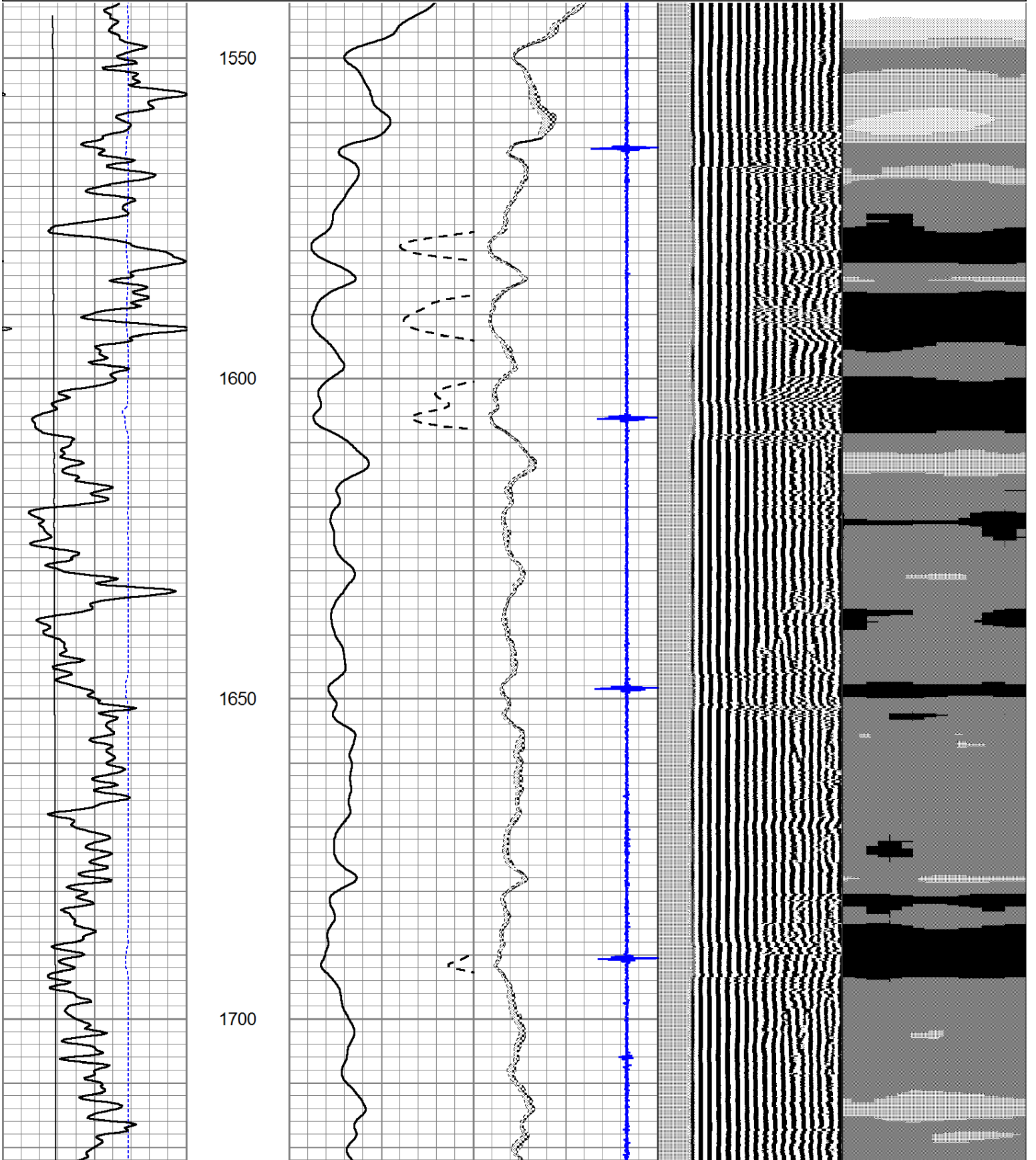
Main Pass

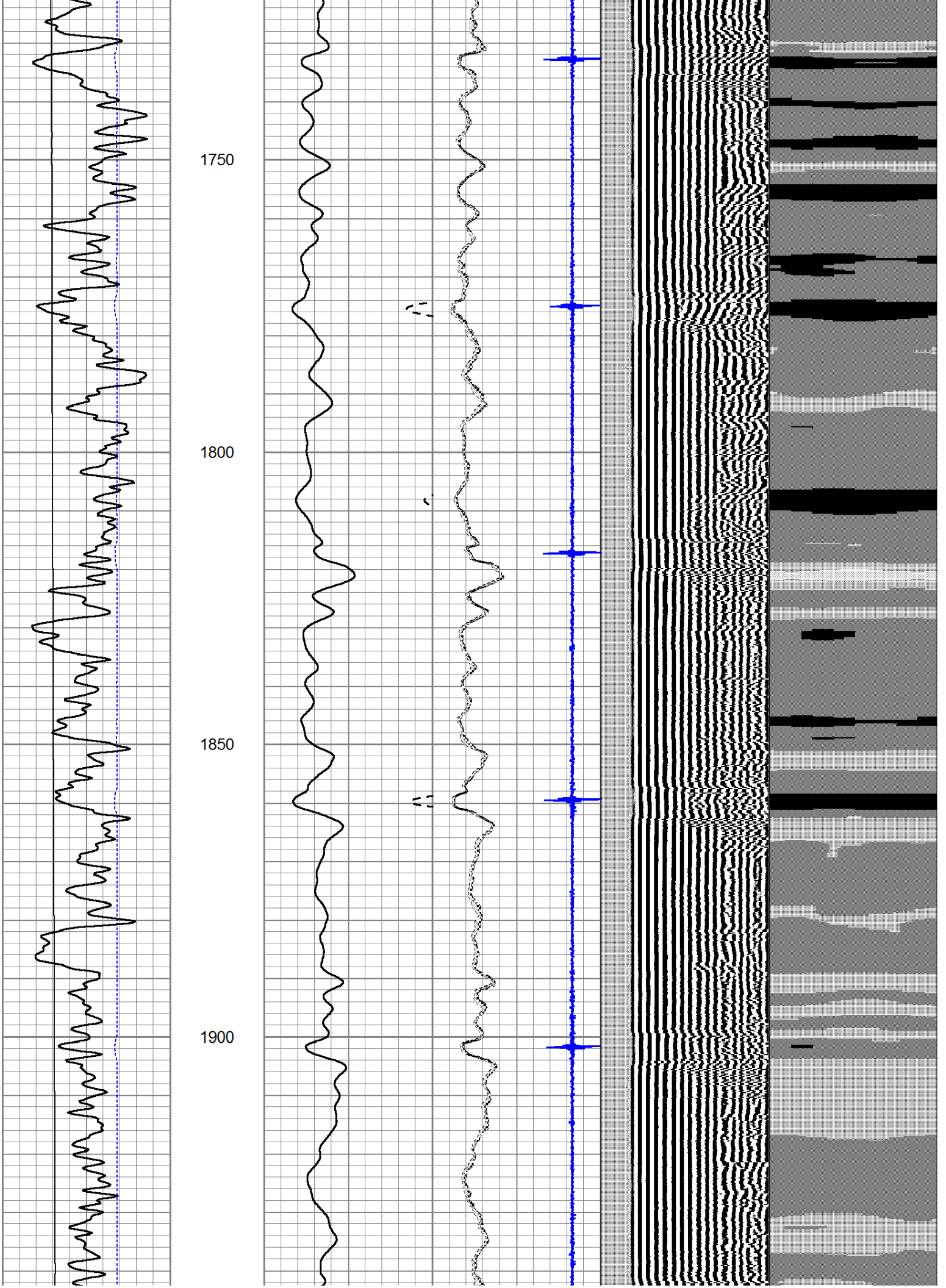
Database File: forestar_petroleum_k&k_2-31_scbl.db
 Dataset Pathname: pass5
 Presentation Format: scbl02
 Dataset Creation: Tue May 27 09:16:42 2014 by Log SCH 111116
 Charted by: Depth in Feet scaled 1:240

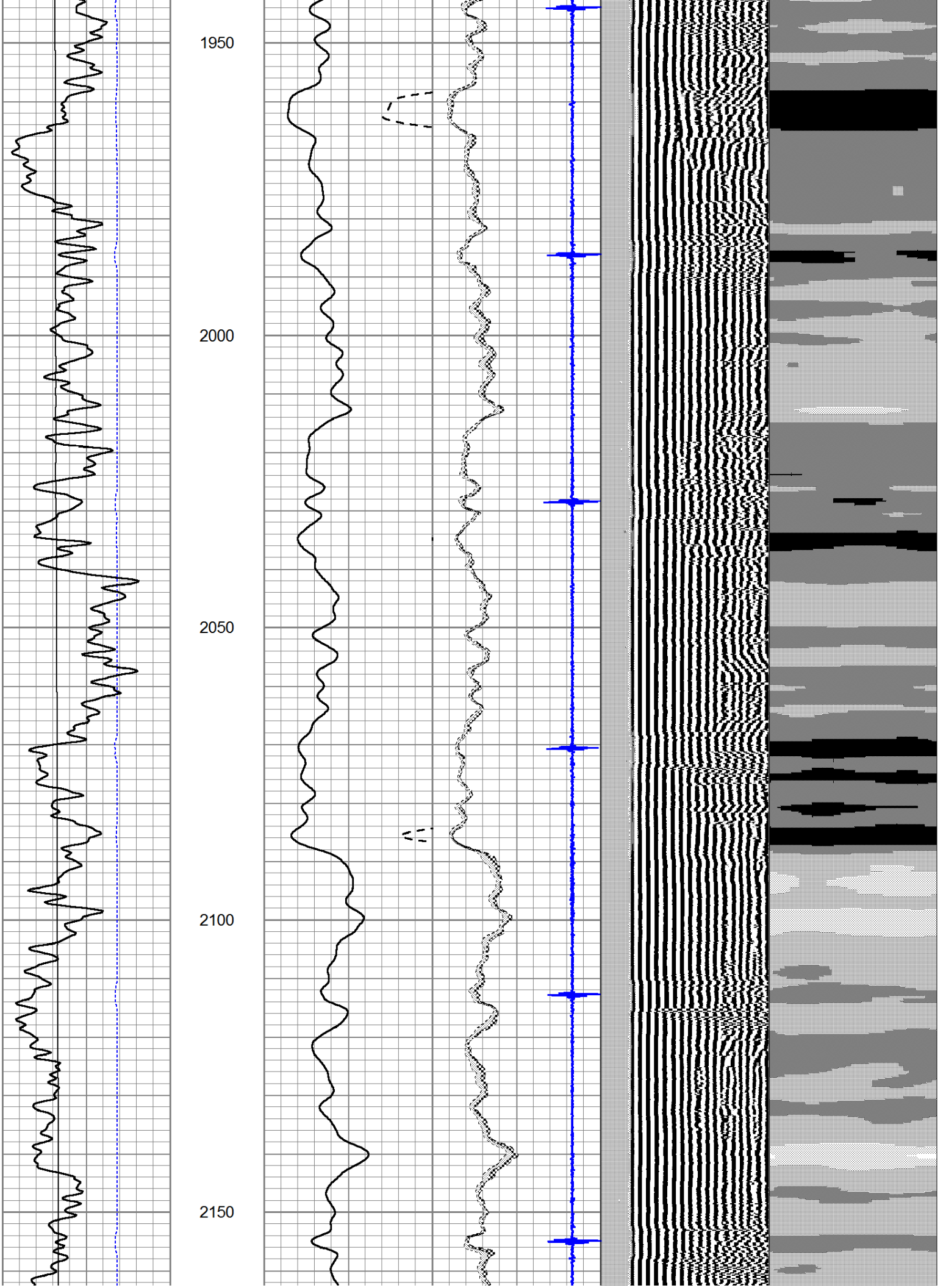
750	TT (usec)	70
0	GR	150
0	LTEN (lb)	2000

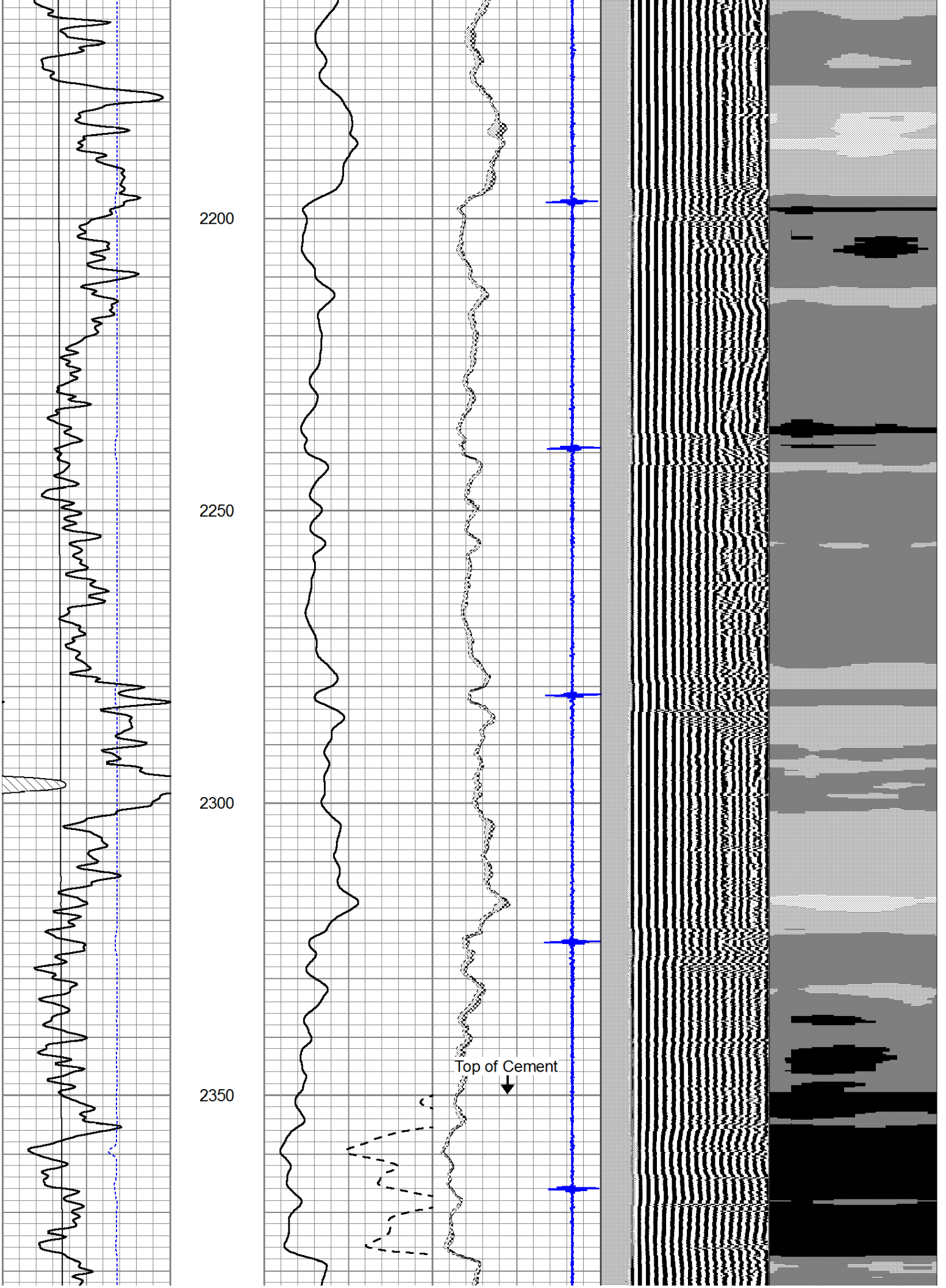
0	AMP (mV)	100	0	AMPAVG	150
0	AMPx5 (mV)	20	0	AMPMAX	150
0			0	AMPMIN	150
5	CCL		-1		

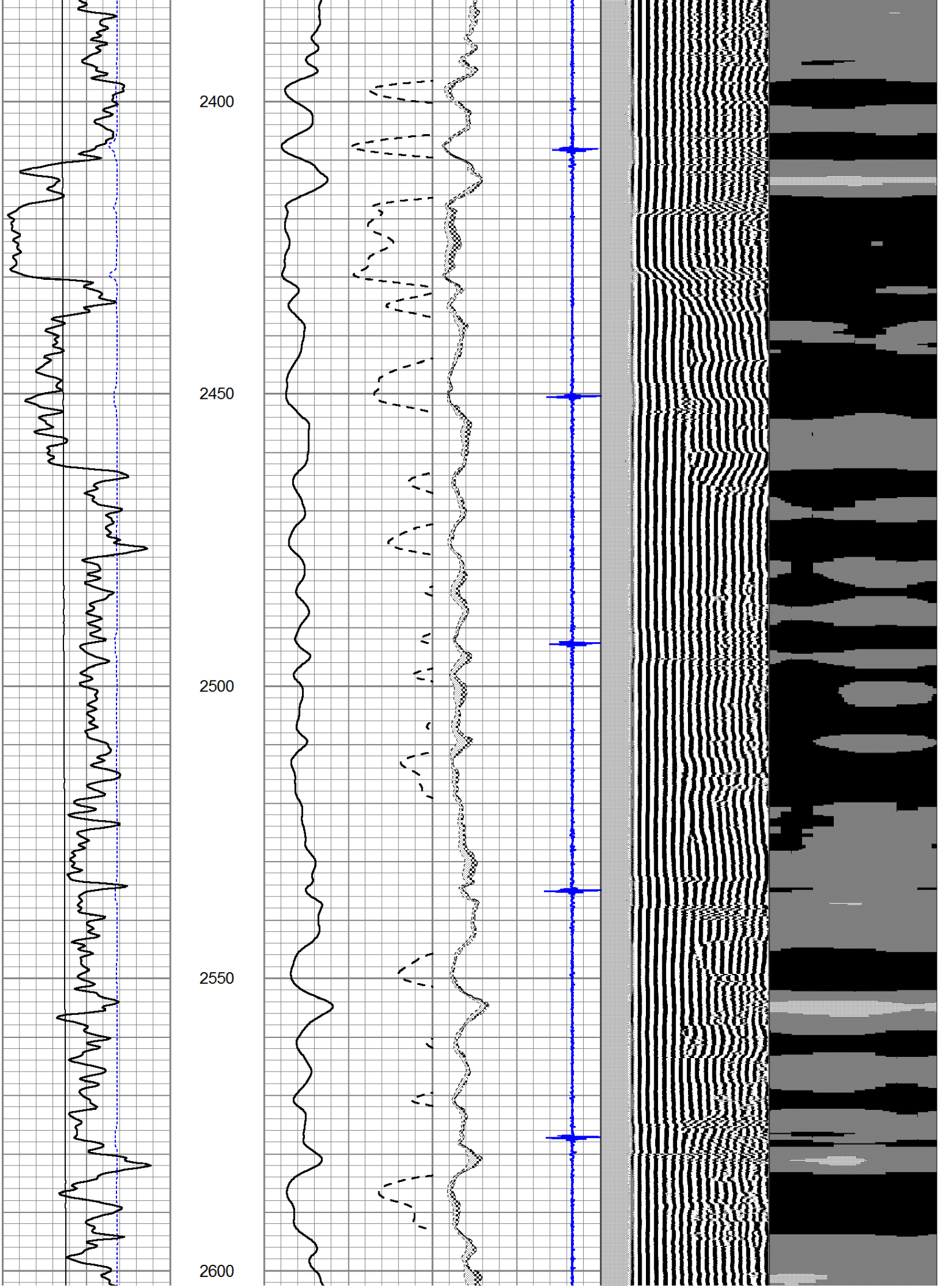
200	VDL	1200	1	Cement Map	8
			25		75

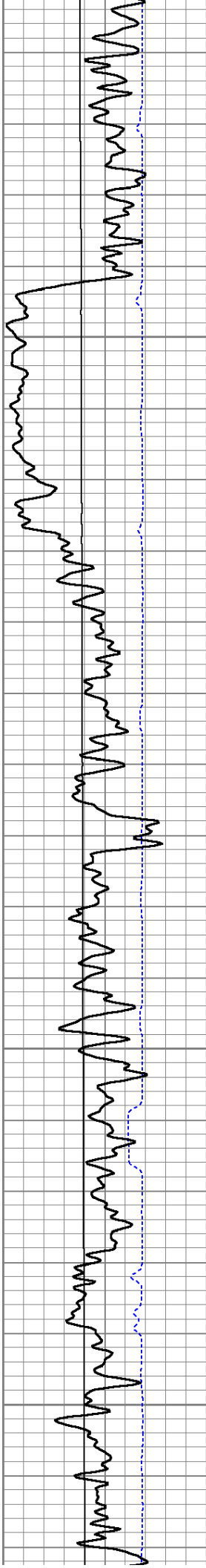











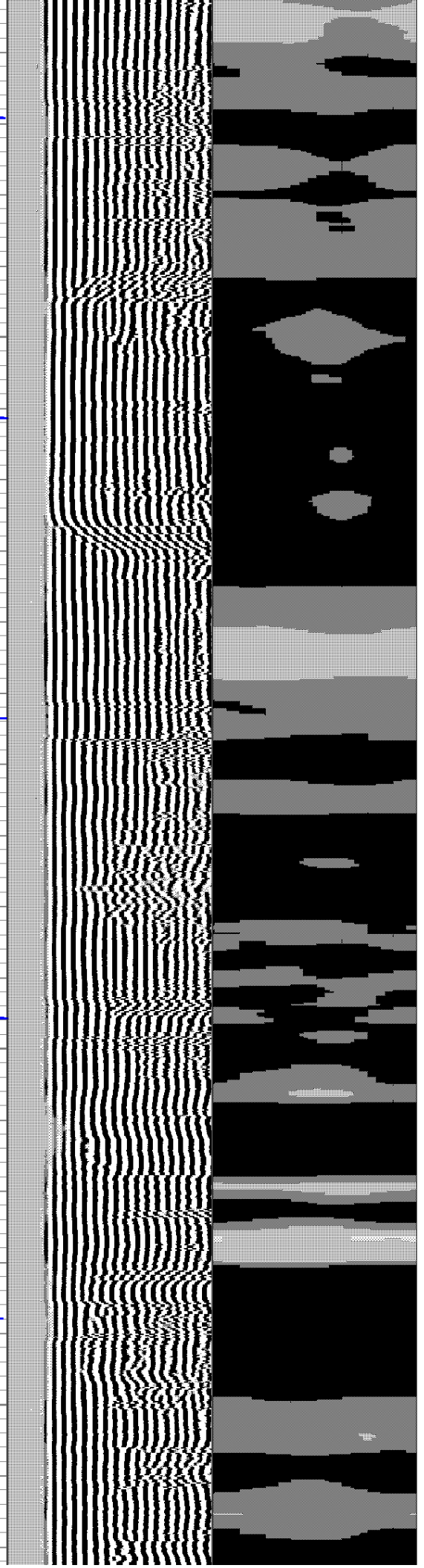
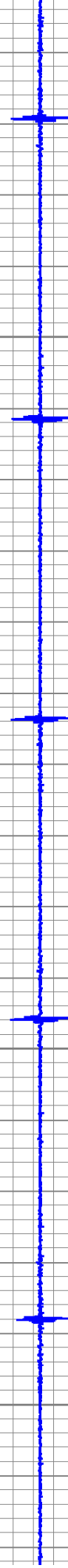
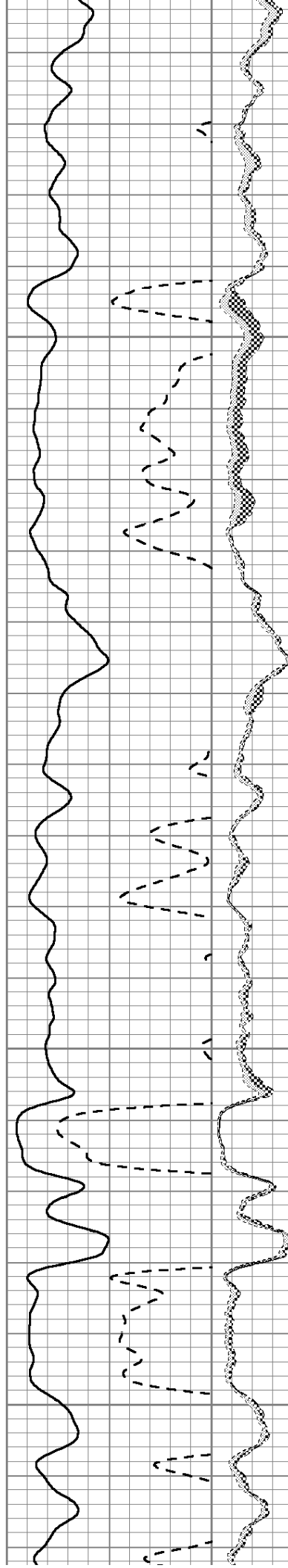


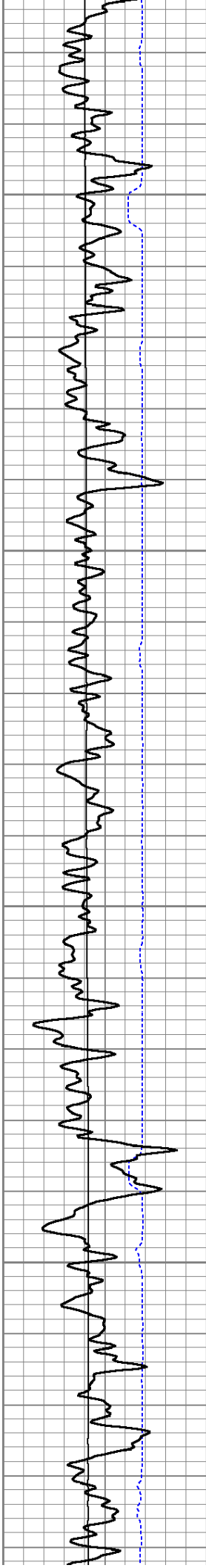
2650

2700

2750

2800



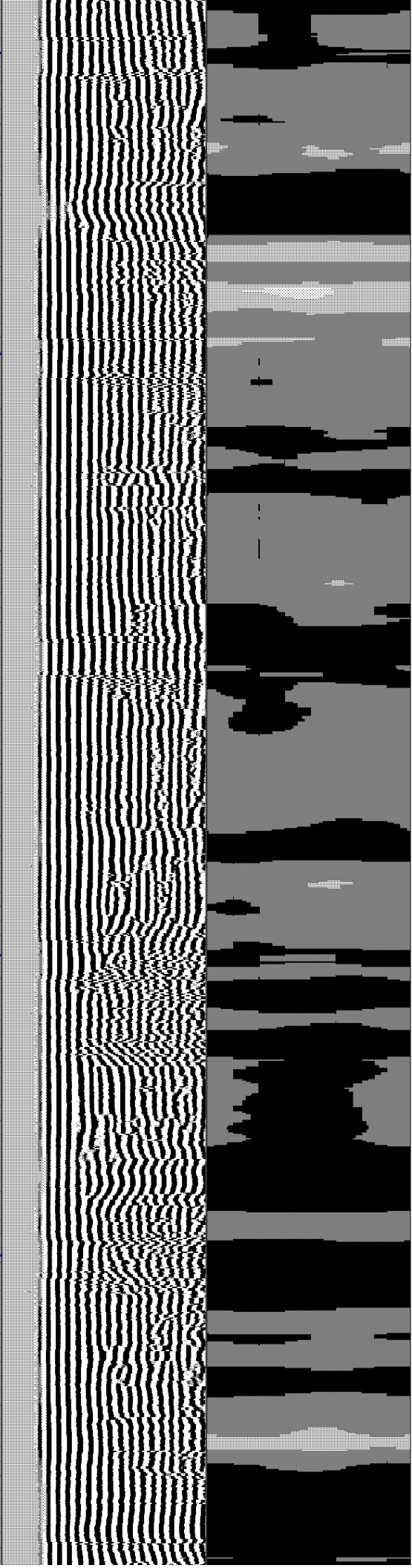
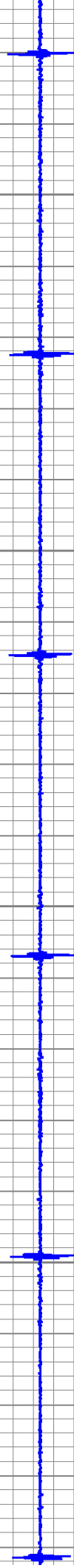
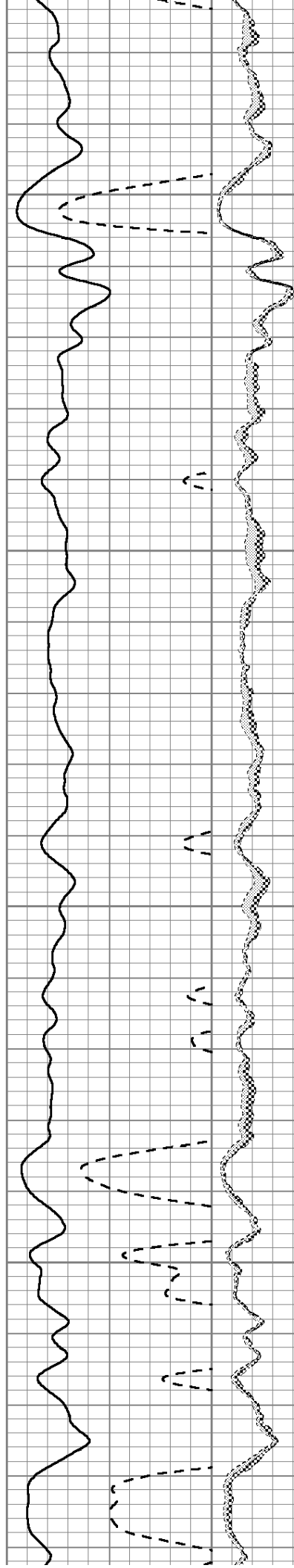


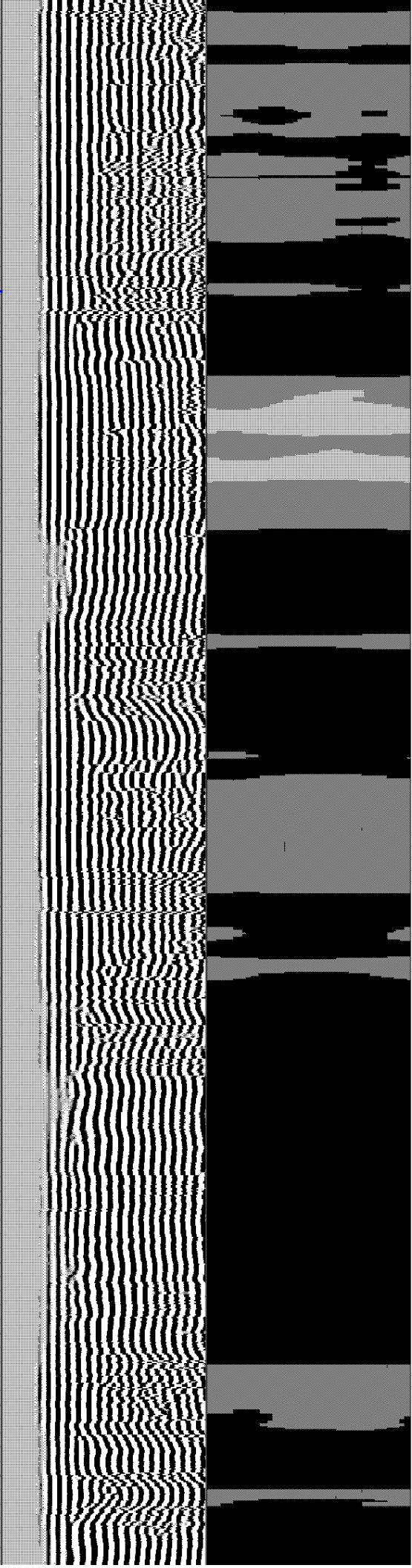
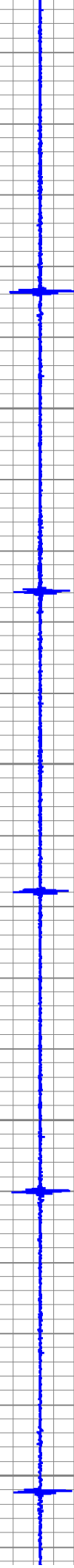
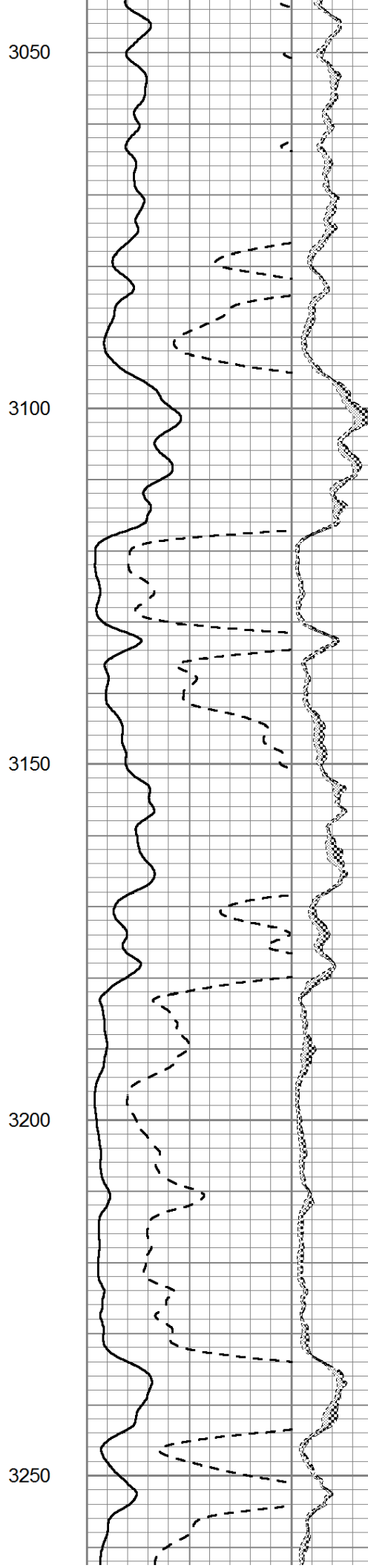
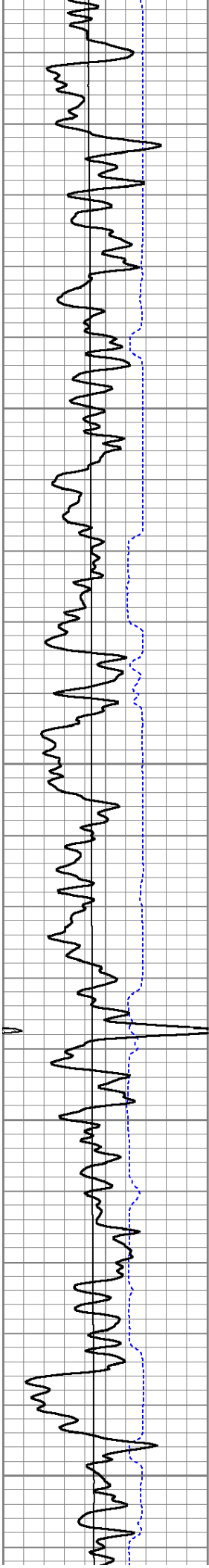
2850

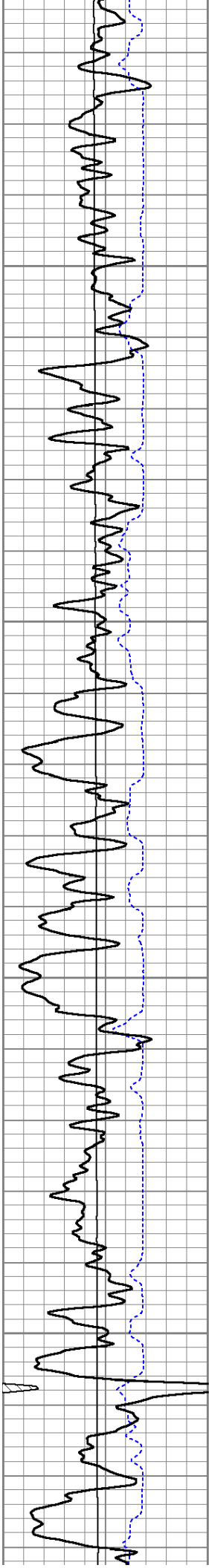
2900

2950

3000





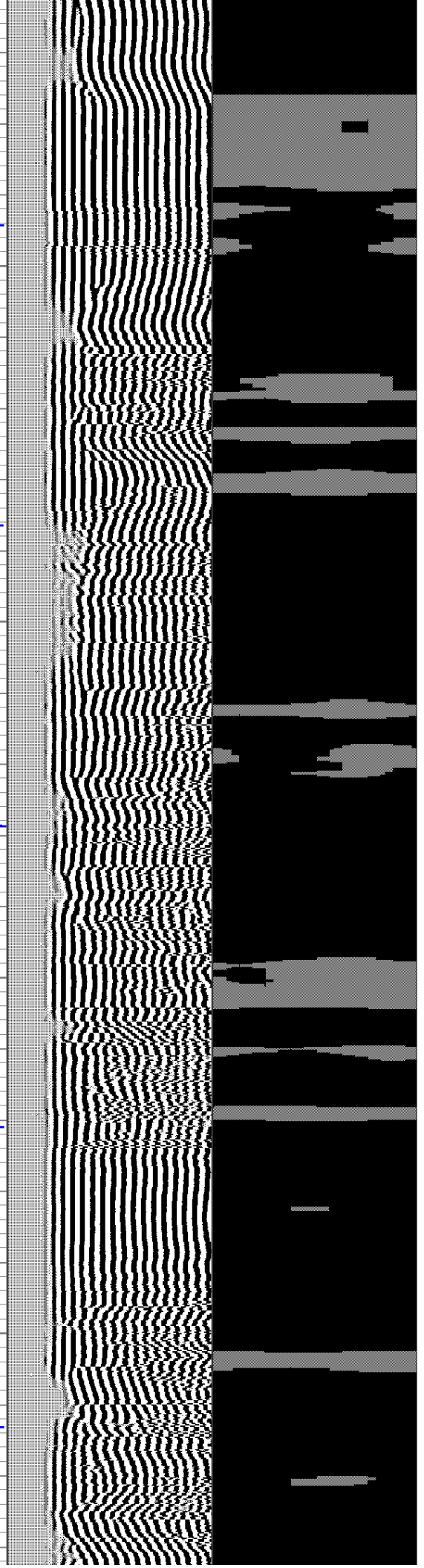
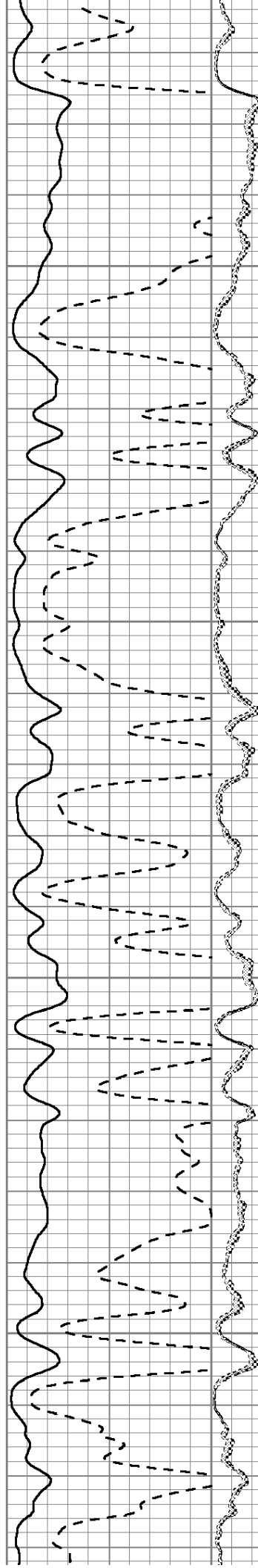


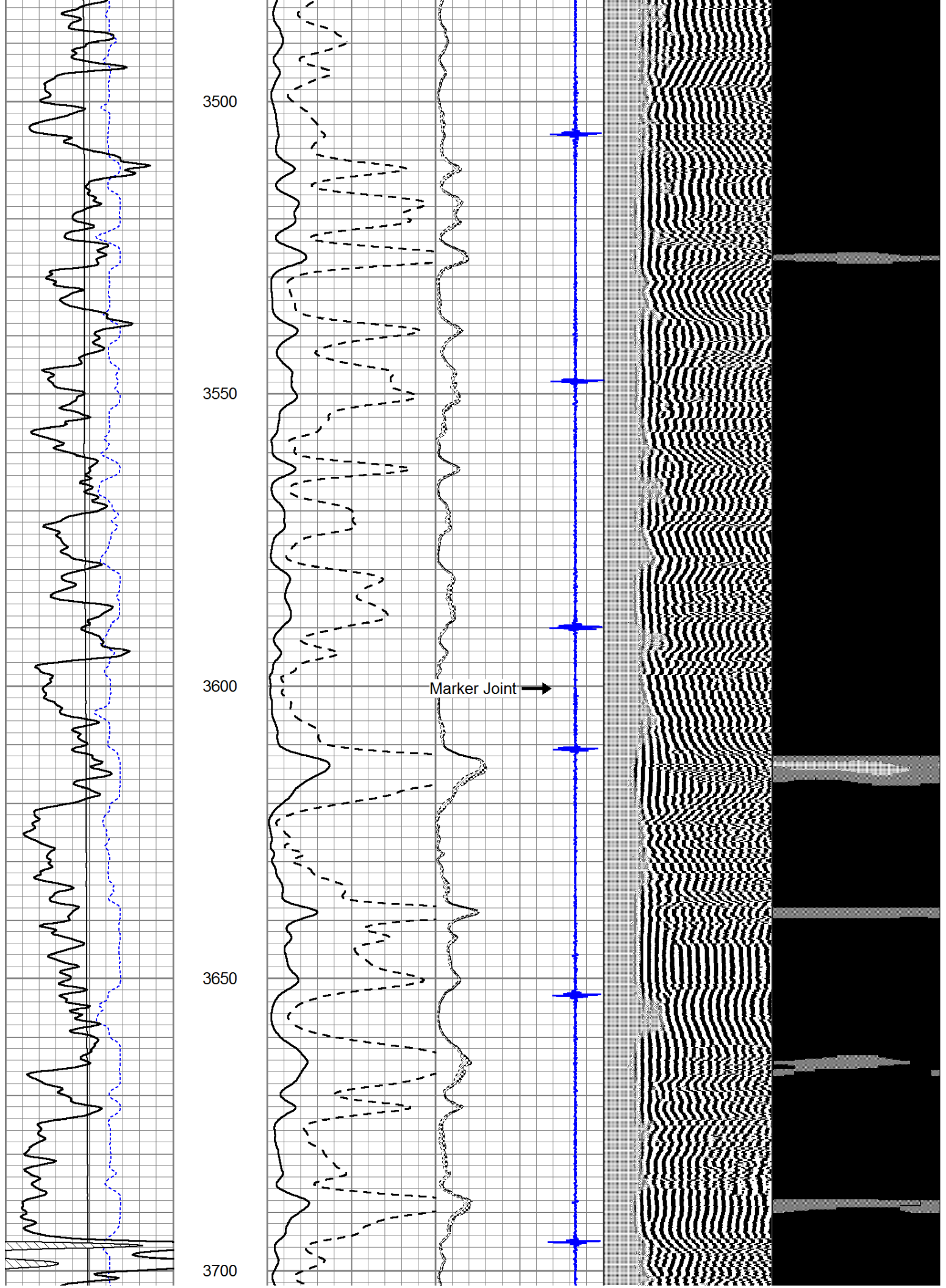
3300

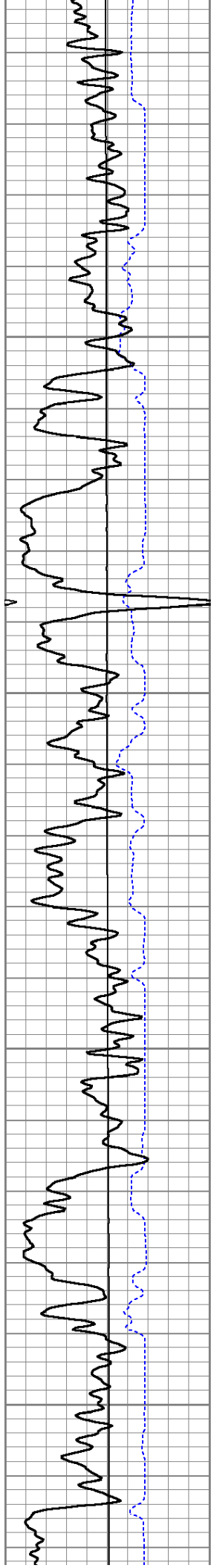
3350

3400

3450





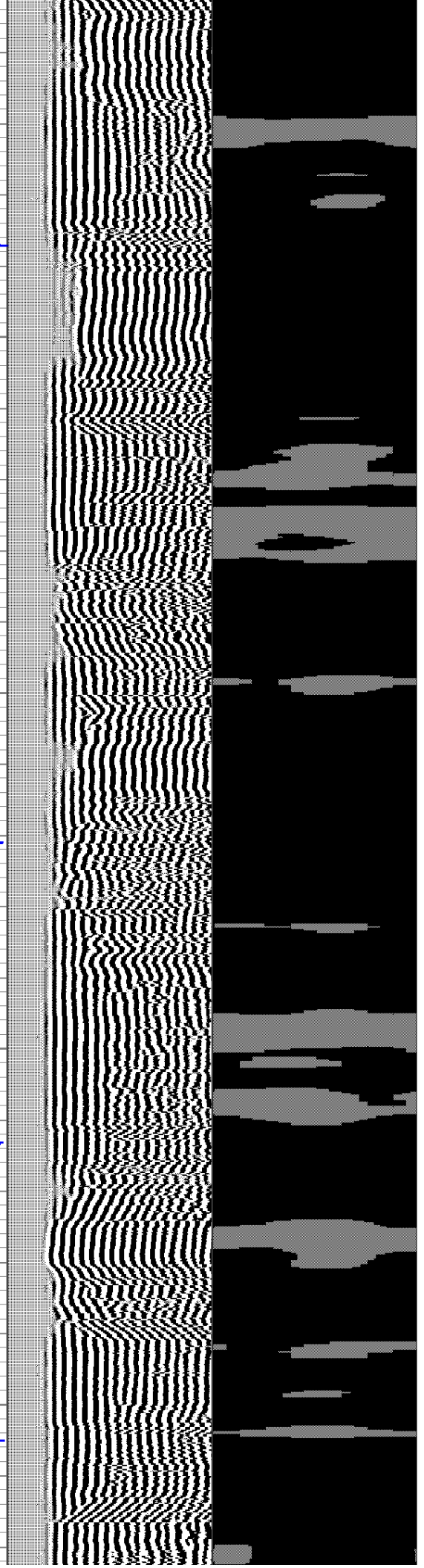
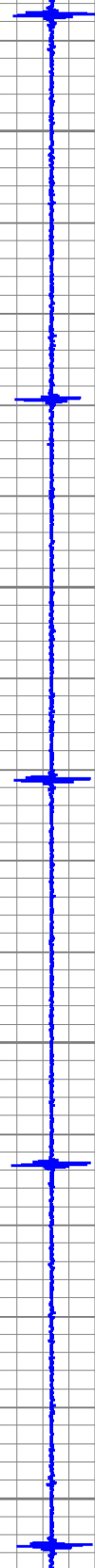
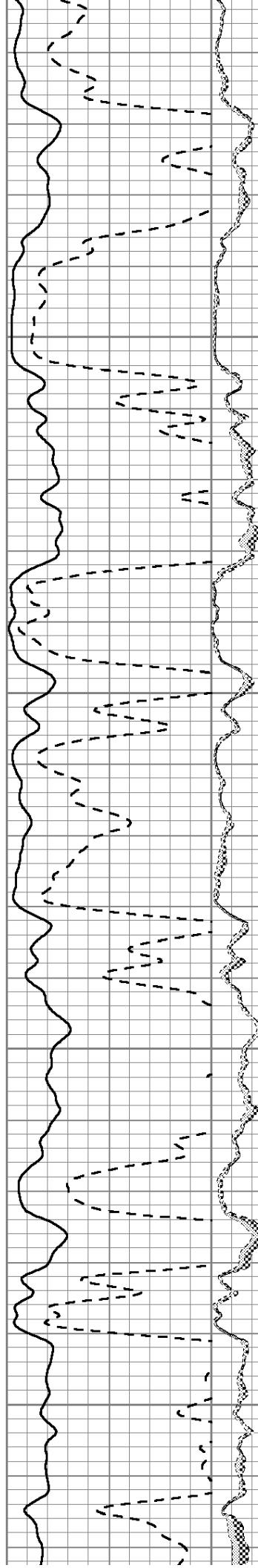


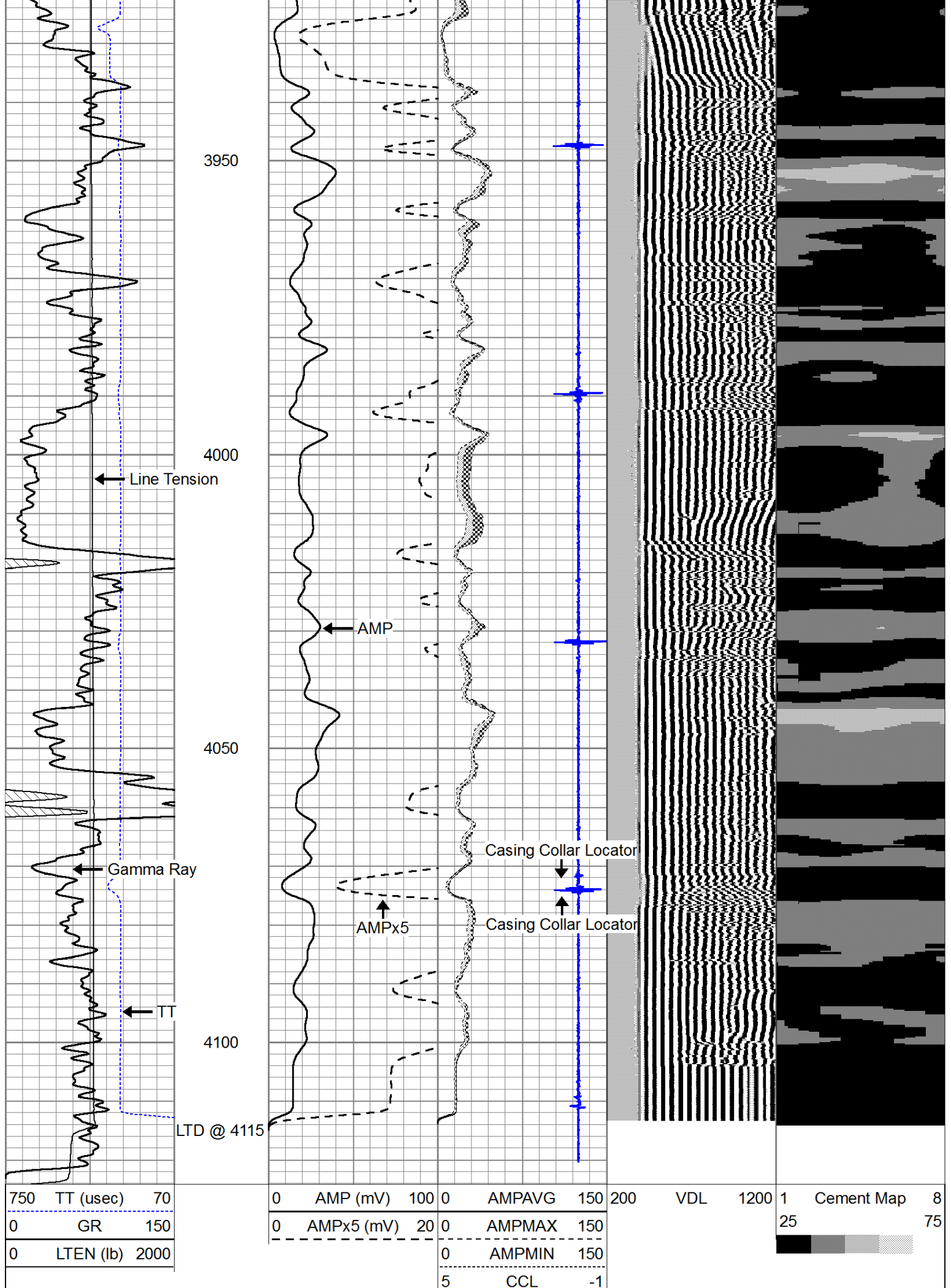
3750

3800

3850

3900





750	TT (usec)	70
0	GR	150
0	LTEN (lb)	2000

0	AMP (mV)	100	0	AMPAVG	150	200	VDL	1200
0	AMPx5 (mV)	20	0	AMPMAX	150			
0	AMPx5 (mV)	20	0	AMPMIN	150			
5	CCL	-1						

1	Cement Map	8
25		75

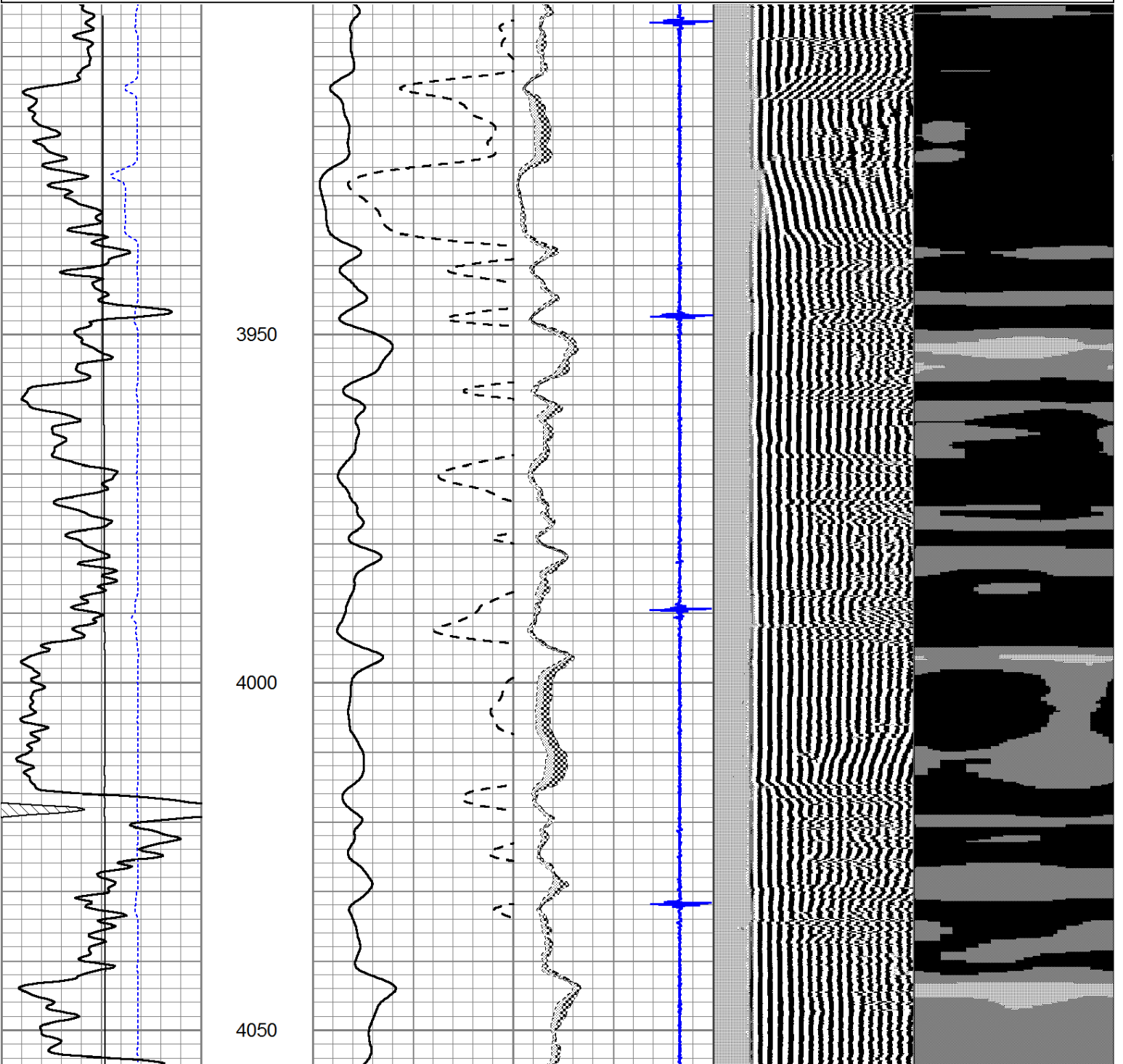


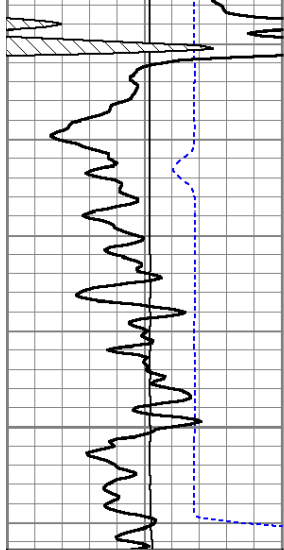
Pioneer Energy Services

Repeat Section

Database File: forestar_petroleum_k&k_2-31_scbl.db
 Dataset Pathname: pass4
 Presentation Format: scbl02
 Dataset Creation: Tue May 27 09:10:16 2014 by Log SCH 111116
 Charted by: Depth in Feet scaled 1:240

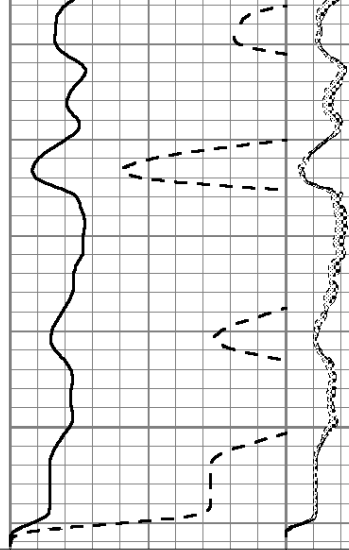
750	TT (usec)	70	0	AMP (mV)	100	0	AMPAVG	150	200	VDL	1200	1	Cement Map	8
0	GR	150	0	AMPx5 (mV)	20	0	AMPMAX	150				25		75
0	LTEN (lb)	2000	0	AMPx5 (mV)	20	0	AMPx5 (mV)	20						
			0	AMPx5 (mV)	20	0	AMPx5 (mV)	20						
			5	CCL		-1								



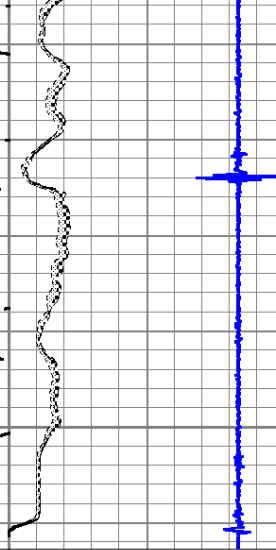


750	TT (usec)	70
0	GR	150
0	LTEN (lb)	2000

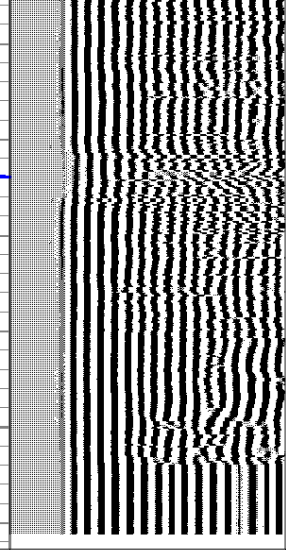
4100



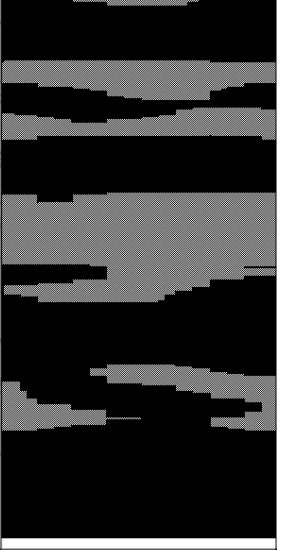
0	AMP (mV)	100
0	AMPx5 (mV)	20



0	AMPAVG	150
0	AMPMAX	150
0	AMPMIN	150
5	CCL	-1



200	VDL	1200
-----	-----	------



1	Cement Map	8
25		75