



Green Country Wireline

**GAMMA RAY
CEMENT BOND LOG
CCL/VDL**

Country USA

Company EXCEL OIL & GAS
Well WINDERS # 15-27
Field PERU-SEDAN
County CHAUTAUQUA
State KANSAS
Country USA

Location: API #: 15-019-27431

Other Services

SEC 15 TWP 34S RGE 12E
NW NE SW NE
3814' FSL & 1659' FEL

Elevation 787'

Elevation

Permanent Datum
Log Measured From
Drilling Measured From

K.B.
D.F.
G.L. 797'

Date	7-29-14				
Run Number	1				
Depth Driller	1062'				
Depth Logger	1041'				
Bottom Logged Interval	1040'				
Top Log Interval	SURFACE				
Open Hole Size	---				
Type Fluid	WATER				
Density / Viscosity	---				
Max. Recorded Temp.	---				
Estimated Cement Top	SURFACE				
Time Well Ready	---				
Time Logger on Bottom	---				
Equipment Number	3				
Location	DEWEY				
Recorded By	HEIKKEN				
Witnessed By	MR JONES				

Borehole Record		Tubing Record					
Run Number	Bit	From	To	Size	Weight	From	To

Casing Record	Size	Wg/ft	Top	Bottom
Surface String	8.625"		SURFACE	40'
Prot. String				
Production String	4.5"		SURFACE	TD
Liner				

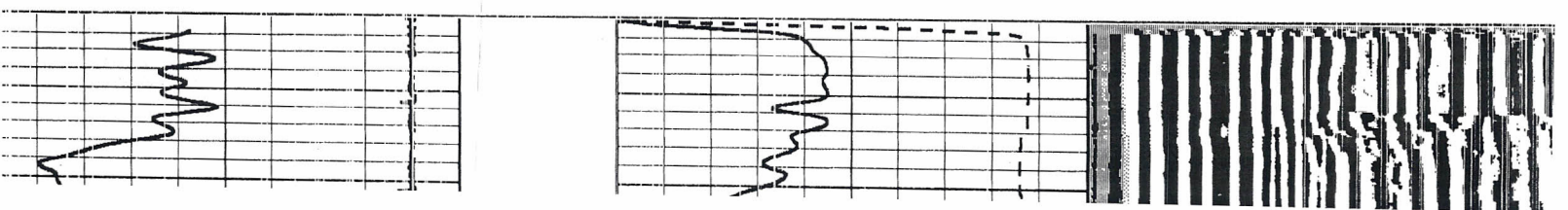
<<< Fold Here >>>

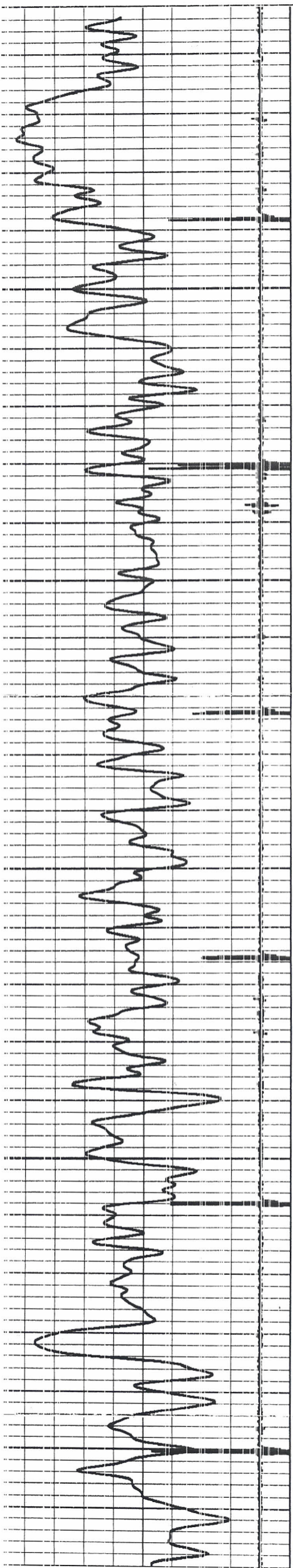
All interpretations are opinions based on inferences from electrical or other measurements and we cannot and do not guarantee the accuracy or correctness of any interpretation, and we shall not, except in the case of gross or willful negligence on our part, be liable or responsible for any loss, costs, damages, or expenses incurred or sustained by anyone resulting from any interpretation made by any of our officers, agents or employees. These interpretations are also subject to our general terms and conditions set out in our current Price Schedule.

Comments

Database File: wind15-27.db
Dataset Pathname: wind15-27/run1/pass1
Presentation Format: standard
Dataset Creation: Tue Jul 29 11:42:00 2014 by Log Std Casedhole 09061
Charted by: Depth in Feet scaled 1:240

Collar Locator	-1	800	TT3FT (usec)	200	200	WVF3FT	1200
Gamma Ray (GAPI)	60	-3	AMP3FT (mV)	300			





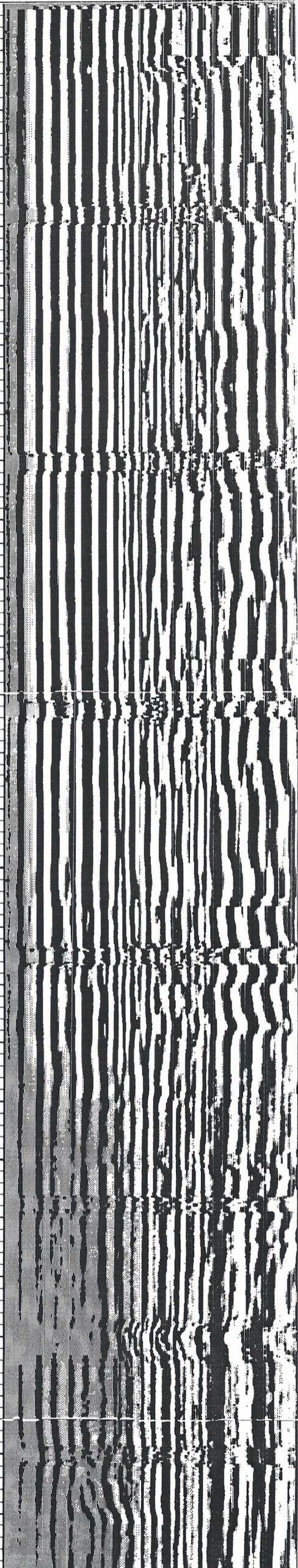
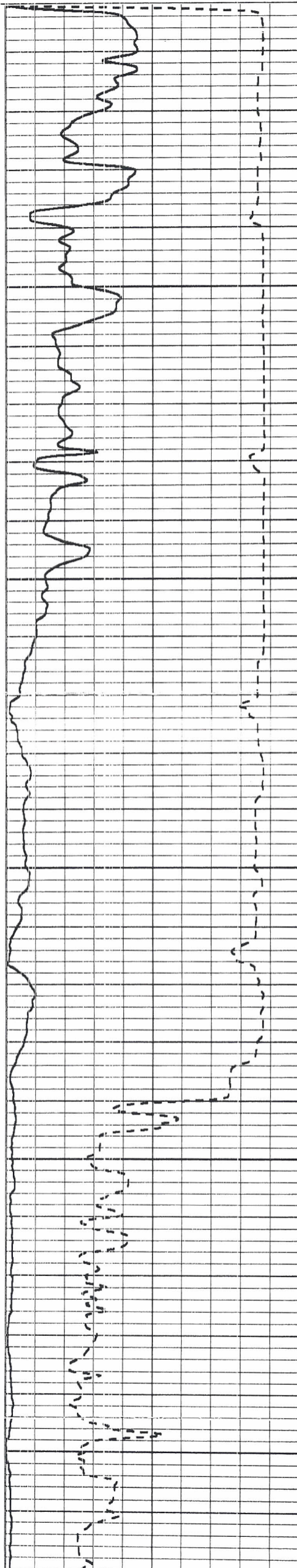
50

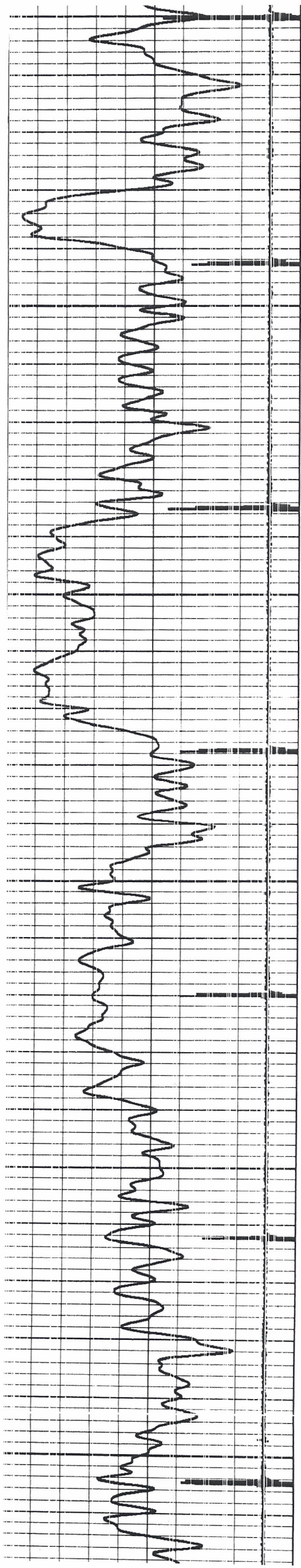
100

150

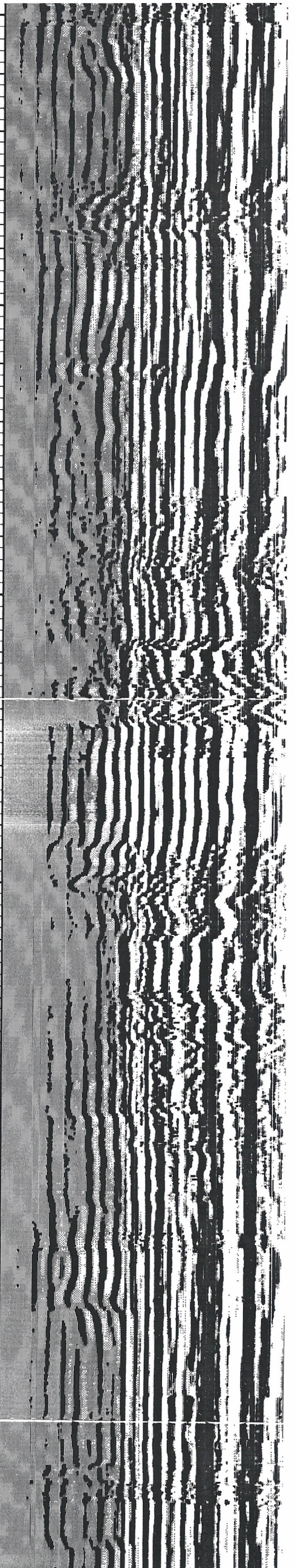
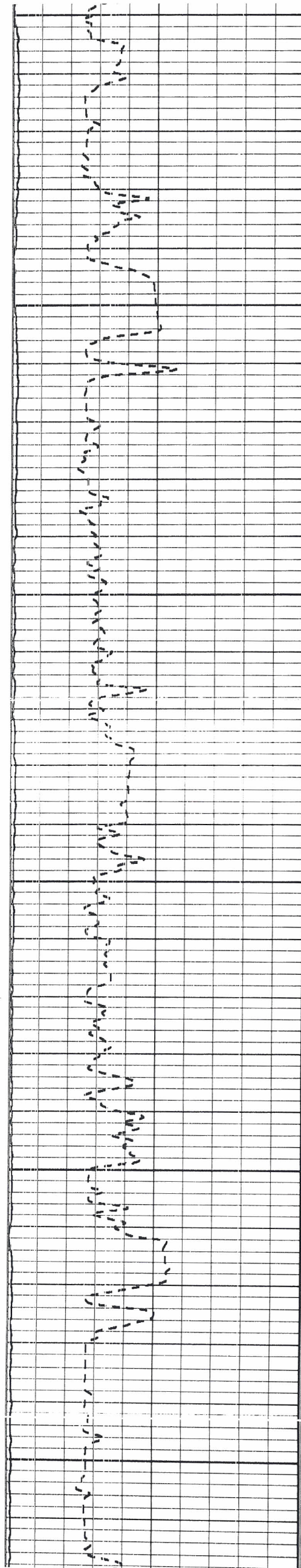
200

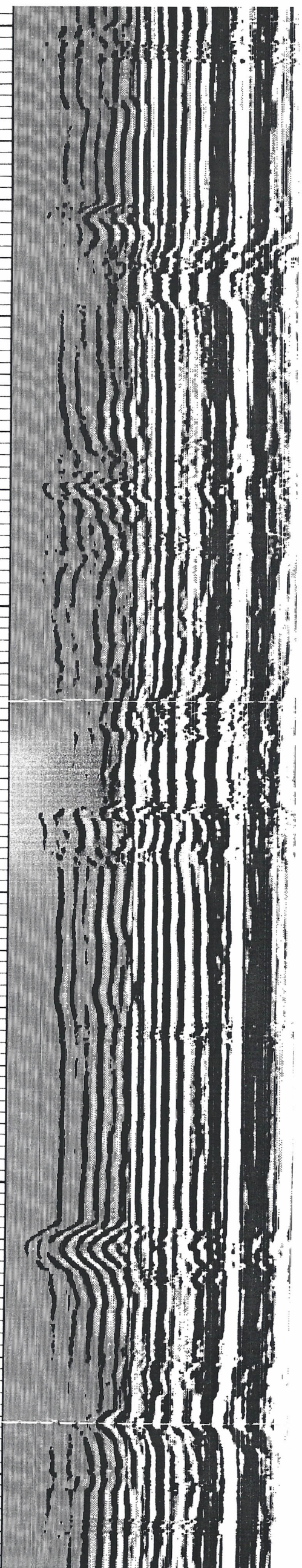
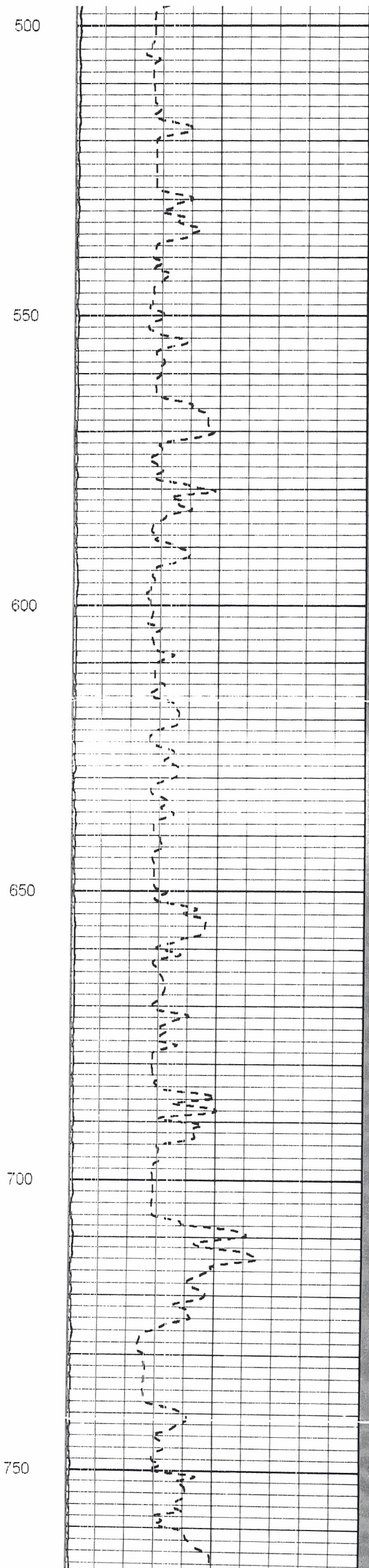
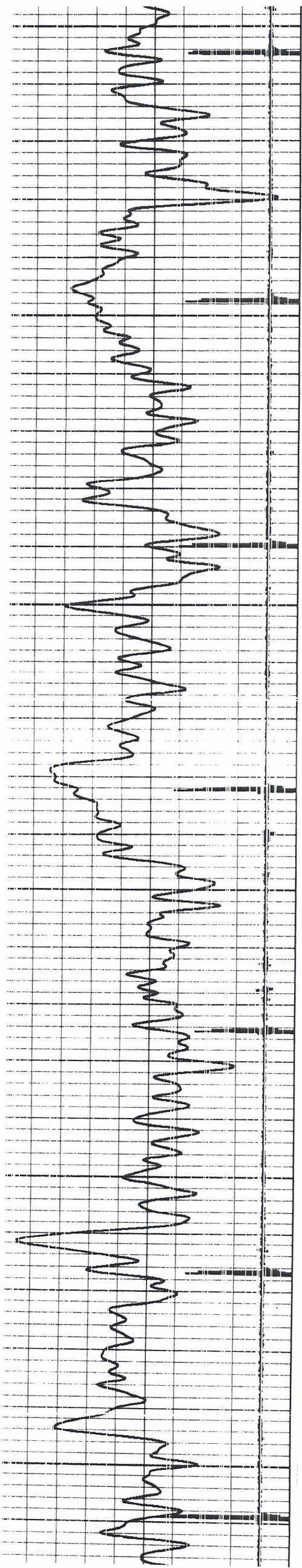
250

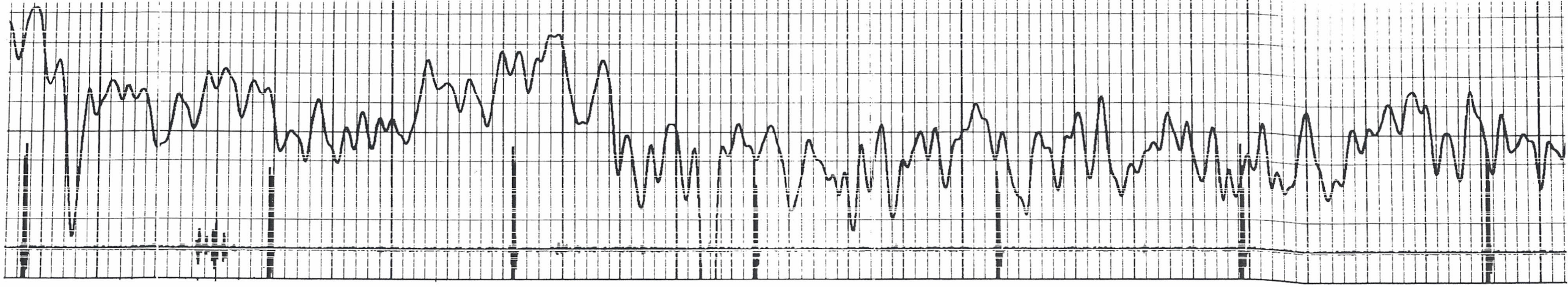




250
300
350
400
450
500







1000

950

7-29-14

900

850

800

750

