



**MIDWEST SURVEYS**  
 LOGGING - PERFORATING - CONSULTING SERVICES  
 P.O. Box 68, Osawatomie, KS 66064  
 913 / 755 - 2128

**GAMMA RAY / NEUTRON / CCL**

File No.

Company Kansas Resources Exploration  
 Well Cartwright No. KRI-17  
 Field Paola - Rantoul  
 County Miami State Kansas

Location 4015' FSL & 520' FEL  
 SW-SE-NE-NE

Other Services  
 Perforate

Sec. 23 Twp. 18S Rge. 21E  
 Permanent Datum GL Elevation 917'  
 Log Measured From GL  
 Drilling Measured From GL

Elevation  
 K.B. NA  
 D.F. NA  
 G.L. 917'

Date

11-20-2014

Run Number

One

Depth Driller

582.0

Depth Logger

530.5

Bottom Logged Interval

529.5

Top Log Interval

20.0

Fluid Level

Full

Type Fluid

Water

Density / Viscosity

NA

Salinity - PPM Cl

NA

Max Recorded Temp

NA

Estimated Cement Top

0.0

Equipment No.

102

Location

Osawatimie

Recorded By

Gary Windisch

Witnessed By

Brad Kramer

BORE-HOLE RECORD				CASING RECORD			
RUN No.	BIT	FROM	TO	SIZE	WGT.	FROM	TO
One	9.875"	0.0	22.10	7.00"	14.0 #	0.0	22.10
Two	5.875"	22.10	582.0	2.875"	6.5 #	0.0	582.80
					Set	At	530.50

<<< Fold Here >>>

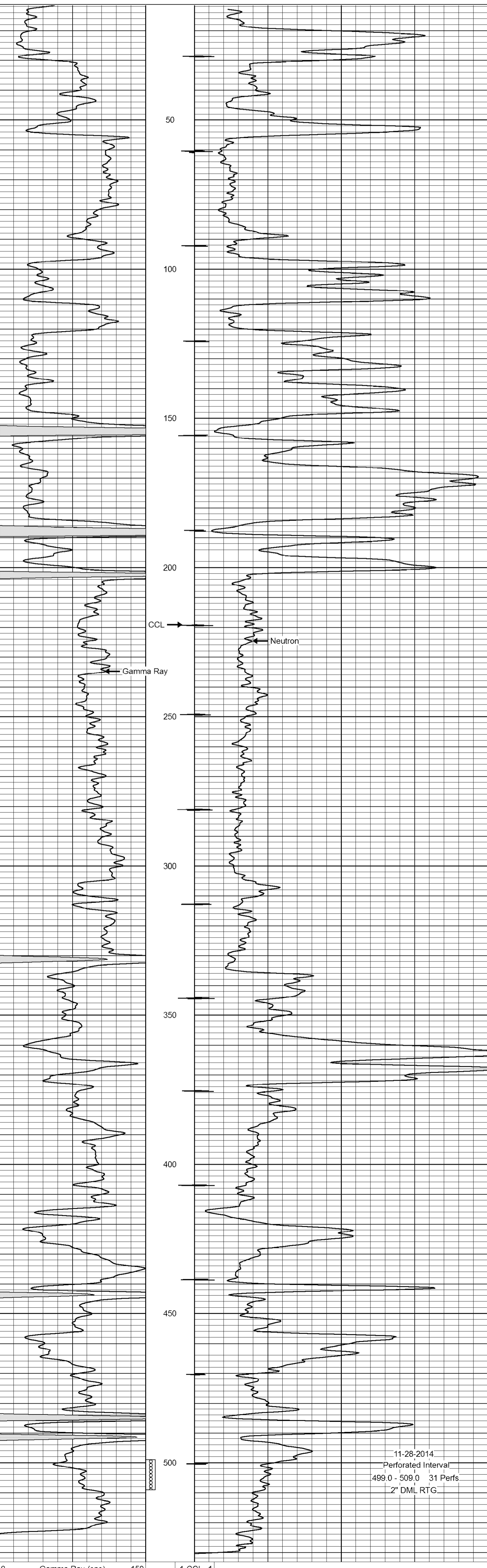
All interpretations are opinions based on inferences from electrical or other measurements and we cannot and do not guarantee the accuracy or correctness of any interpretation, and we shall not, except in the case of gross or willful negligence on our part, be liable or responsible for any loss, costs, damages, or expenses incurred or sustained by anyone resulting from any interpretation made by any of our officers, agents or employees. These interpretations are also subject to our general terms and conditions set out in our current Price Schedule.

Comments

Drilling Contractor :  
 McGown Drilling, Inc.

Database File: cartwright17kri.db  
 Dataset Pathname: pass1  
 Presentation Format: gr-n-ccl  
 Dataset Creation: Thu Nov 20 16:02:15 2014 by Log SCH 111116  
 Charted by: Depth in Feet scaled 1:240

0	Gamma Ray (cps)	150	-1 CCL 1	100	Neutron (cps)	1900
150	Gamma Ray (cps)	300				



11-28-2014  
 Perforated Interval  
 499.0 - 509.0 31 Perfs  
 2" DML RTG

0	Gamma Ray (cps)	150	-1 CCL 1	100	Neutron (cps)	1900
150	Gamma Ray (cps)	300				