



Gamma Ray

REALTIME LOG

Scale: 1:240	TVD	Company: SandRidge Energy	Well: Suzanne 3306 3-34H
Status: Final Print	Field: Harper County	County: Harper	State: Kansas
Job ID: 6208184	Surface Location: 37° 08' 15.833" N	Latitude: 97° 57' 08.894" W	Longitude: Directional/VSS
API Number: 15077220240100	SEC: 34	TWPF: 33S	RNG: 8VV
Permanent Datum (P.D.): Mean Sea Level	Elevation: 1296.00 ft.	Elevations: 18.00 ft.	KB: 1296.00 ft.
Log Measured From: Kelly Bushing	18.00 ft.	Above P.D.: GL:	1278.00 ft.

Interval Logged	Dates	Magnetic Field Reference
Top: 3000 ft.	Date From: 06/Mar/14	Dip Angle: 65.27°
Bottom: 8964 ft.	Date To: 17/Mar/14	Azi Reference North: Grid
	Spud Date: 06/Mar/14	Total Mag to Reference: 4.10°
		Field Strength: 51673.5 nT
		North Correction: 0

Borehole Record			Casing Record			
Hole Size	From	To	Size	Weight	From	To
6.125 in.	5223 ft.	9027 ft.	9.825 in.	36.00 lb/ft	0 ft.	687 ft.
			7 in.	26.00 lb/ft	687 ft.	5223 ft.

Mud Record		Deviation Record	
Type	From	To	Interval
Water Based	687 ft.	5223 ft.	0.7° / 137.3°
Water Based	5223 ft.	9027 ft.	90.5° / 194.4°
			91.8° / 180.7°
			/
			/
			/

Acquisition System	Software Version	Rig:	Unit 310	Other
Advantage	2.20U4	Contractor:	Unit Drilling	
PATS	6.4.1.34	Contractor:	Unit Drilling	
		Distric: / Unit:	Oklahoma City	/ 12472746

Any opinion and / or recommendation expressed orally or written herein, has been prepared carefully and may be used if the user so elects, however, no representative or warranty is made by ourselves or our agents as to the correctness or completeness, and no liability is assumed for any damages resulting from use of the same. INTEQ's liabilities and obligations shall be governed by INTEQ's Standard Terms and Conditions.

Log Run Summary

LWD Run No.	BHA Run No.	Bit Run No.	Bit Size (in.)	Bit Type	Bit Gauge Length (in.)	Assembly Type	Logged Interval		Bit Depth Interval		Date / Time		Circ. Time (hrs.)
							Top (ft.)	Bottom (ft.)	From (ft.)	To (ft.)	Start	End	
1	1	2	8.75	PDC	3	Steerable	3000	5166	687	5223	06/Mar/2014 5:00	13/Mar/2014 02:30	104.10
2	2	3	6.125	PDC	3	Steerable	5166	8964	5223	9027	13/Mar/2014 19:45	17/Mar/2014 16:00	77.00

Crew

Name	Arrive Wellsite	Depart Wellsite	Name	Arrive Wellsite	Depart Wellsite	Name	Arrive Wellsite	Depart Wellsite
William Kilmer	06/Mar/2014	17/Mar/2014	Jared Barnes	06/Mar/2014	17/Mar/2014			

Witness	
Name	LWD Run Number
Tony Lejia	1
Michael Kulehisley	1, 2

Mud Properties Record												
Date / Time	LWD Run No.	Measured Depth (ft.)	Mud Type	Density (PPG)	Viscosity (cp)	pH	Fluid Loss (cc)	Oil / Water	Source	Total Chlorides (ppm)	K+ (%)	
08/Mar/14	1200	1	1096	Water Based Mud	8.9	36	9.0	0.0	0/99.2	Suction	55000	N/A
09/Mar/14	13:00	1	2968	Water Based Mud	8.6	50	11.5	0.0	0/99.6	Suction	400	N/A
10/Mar/14	09:00	1	3886	Water Based Mud	8.6	50	10.5	0.0	0/98.0	Suction	11000	N/A
11/Mar/14	11:00	1	4462	Water Based Mud	8.6	45	11.0	0.0	0/97.0	Suction	12000	N/A
12/Mar/14	11:30	1	5081	Water Based Mud	9.1	45	10.5	0.0	0/94.7	Suction	8000	N/A
13/Mar/14	11:30	2	5223	Water Based Mud	9.0	45	10.0	0.0	0/95.5	Suction	12000	N/A
14/Mar/14	12:00	2	5471	Water Based Mud	8.4	27	11.0	0.0	0/99.0	Suction	1200	N/A
15/Mar/14	13:30	2	6821	Water Based Mud	8.6	27	10.5	0.0	0/99.5	Suction	2300	N/A
16/Mar/14	14:00	2	8026	Water Based Mud	8.6	27	10.5	0.0	0/99.5	Suction	3000	N/A

Mnemonics		
Curve	Description	Units
GRAX	Gamma Ray Apparent	API
TCDX	Downhole Temperature	degF
ROP_AVG	Rate of Penetration, 3.0 ft. Average	ft/hr
WOB_AVG	Weight on Bit, 1.0 ft Average	k lbs
GRIX	Gamma Ray Data Density	unitless
GRTX	Gamma Ray Time Since Drilled	seconds

Equipment and Service Data						
LWD Run No.	Tool	Serial Number	Measurement	Bit Offset (ft)	Max O.D. (in.)	Min I.D. (in.)
1	DIR	12592549	Directional	51.10	6.75	3.25
1	SRIG	12461710	Gamma	56.19	6.75	3.25
2	DIR	12479871	Directional	55.86	4.75	2.88
2	SRIG	10442082	Gamma	60.95	4.75	2.88

Service and Tool Mnemonics	

Mnemonic	Name	Description
DIR	Directional	Wellbore Directional Survey
SRIG	Inclination and Gamma	Probe Based Gamma Ray and Inclination Module

Comments

1) Gamma was logged starting at 3000 feet MD (2984 TVD).

2) Baker Hughes INTEQ run 1 utilized a 6 3/4 inch NaviGamma Service (Directional and Gamma Ray) atop a 8 3/4 inch bit and 6 3/4" steerable assembly from 687 to 5223 feet MD (687 to 4476 feet TVD).


3) Baker Hughes INTEQ run 2 utilized a 4 3/4 inch NaviGamma Service (Directional and Gamma Ray) atop a 6 1/8 inch bit and 4 3/4" steerable assembly from 5223 to 9027 feet MD (4476 to 4480 feet TVD).

4) Depth measurements were obtained from a depth control system not supplied by Baker Hughes INTEQ. Due to a lack of control by Baker Hughes INTEQ logging engineers, depth calculations and measurements could not be independently verified and the unverified depths are supplied to INTEQ are being used to present logging data.

Remarks

Number	Measured Depth (ft)	Hole Section (in.)	LWD Run No.	Remark
1	5223	8.75	2	The interval from 5186 to 5223 feet MD (4478 to 4476 feet TVD) was logged up to 37 hours after drilling due to a trip out of hole to place casing and to pickup a new bit, motor, and MWD.
2	9027	6.125	2	The interval from 8964 to 9027 feet MD (4482 to 4480 feet TVD) was not logged due to Gamma Ray sensor to bit offset at well TD.

Curve Mnemonics		
Curve	Description	Units
GRAX	Gamma Ray - Apparent	API
GRIX	Gamma Ray - Data Point Indicator	unitless
GRTX	Gamma Time Since Drilled GRTX	min
ROP_AVG	Depth Averaged ROP	ft/hr
TCDX	Downhole Temperature	degF
WOB_AVG	AVERAGE Weight On Bit	klbf



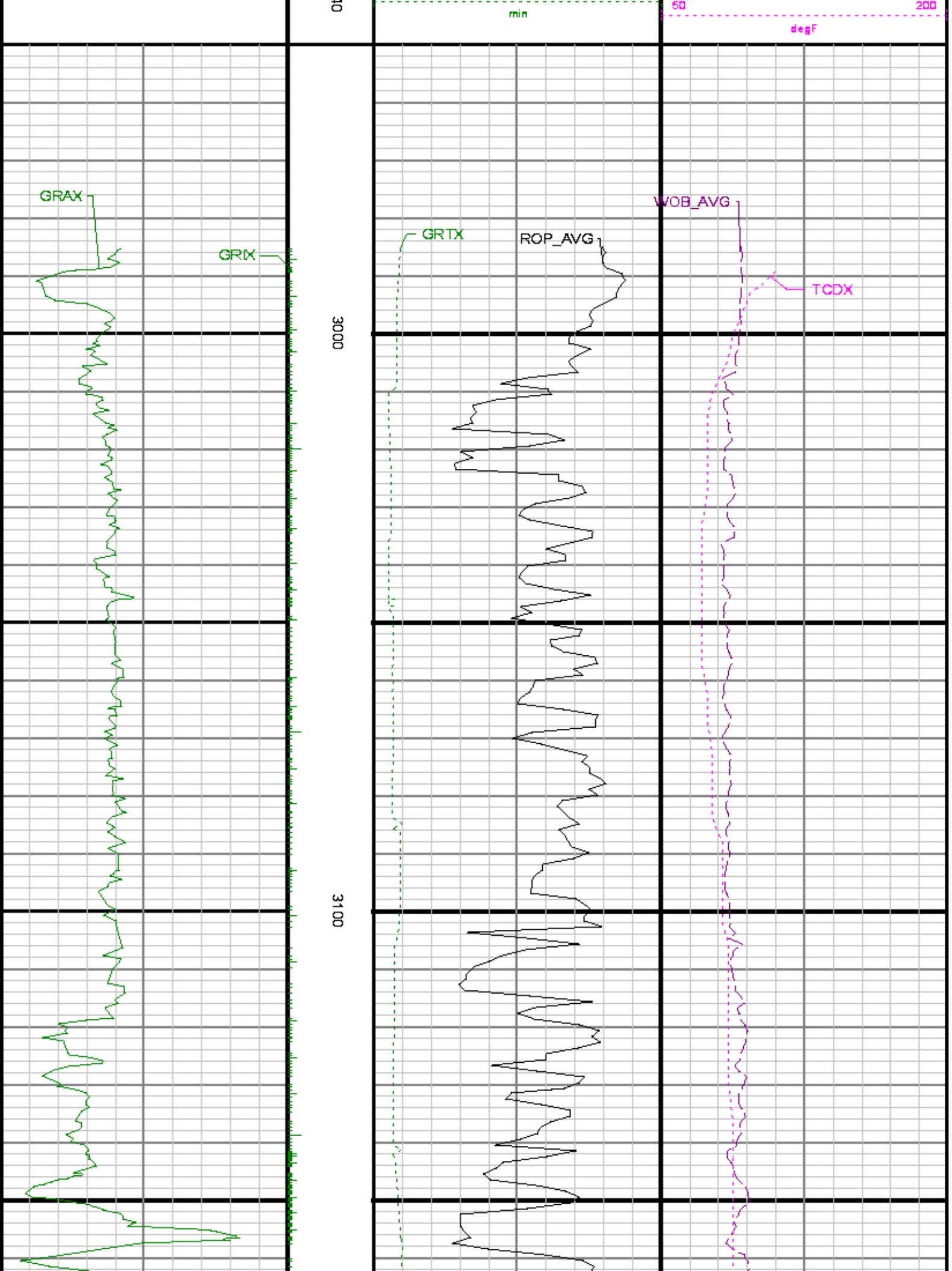
Company : SandRidge Energy, Inc

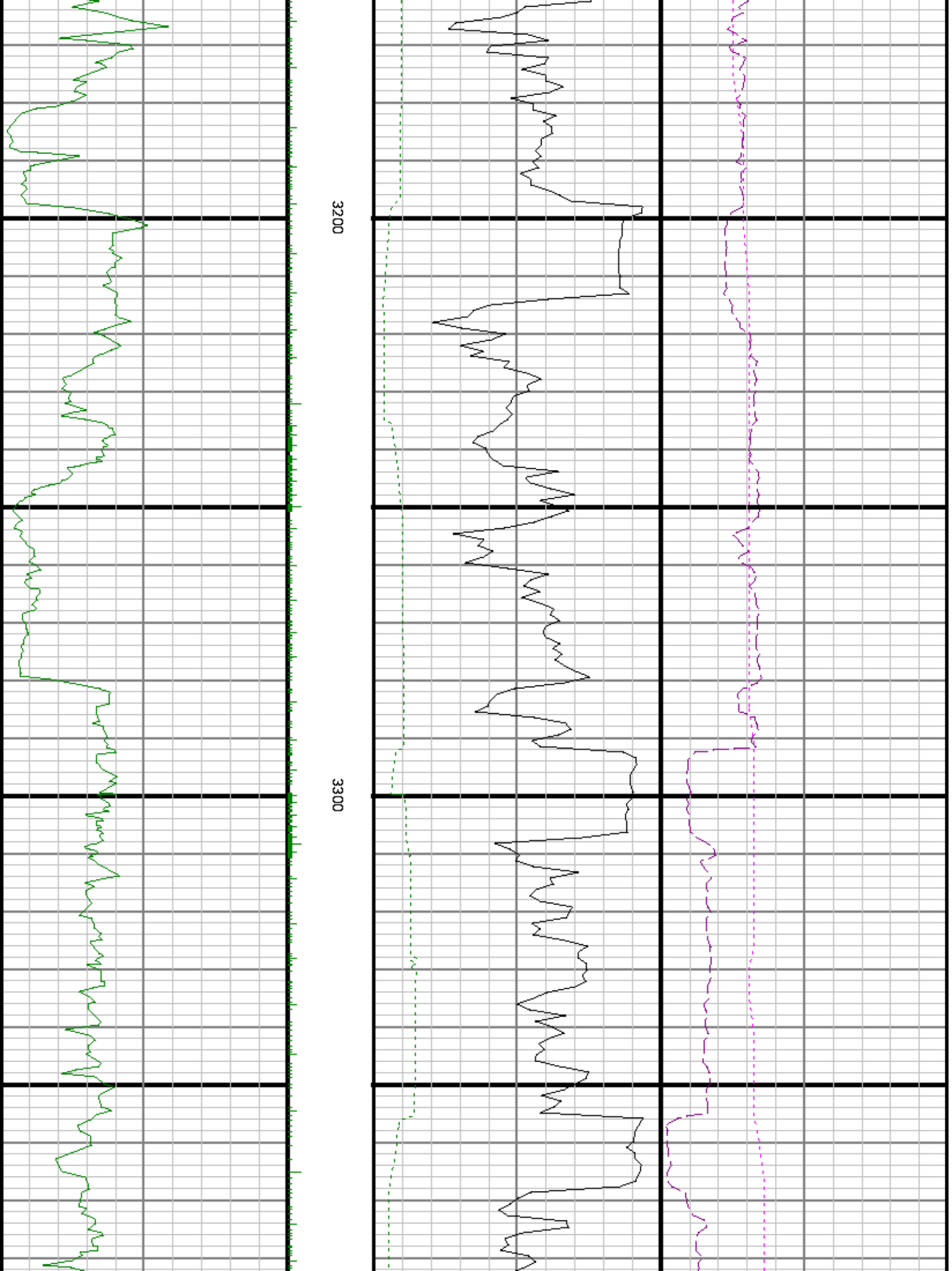
Well : Suzanne 3306 3-34H

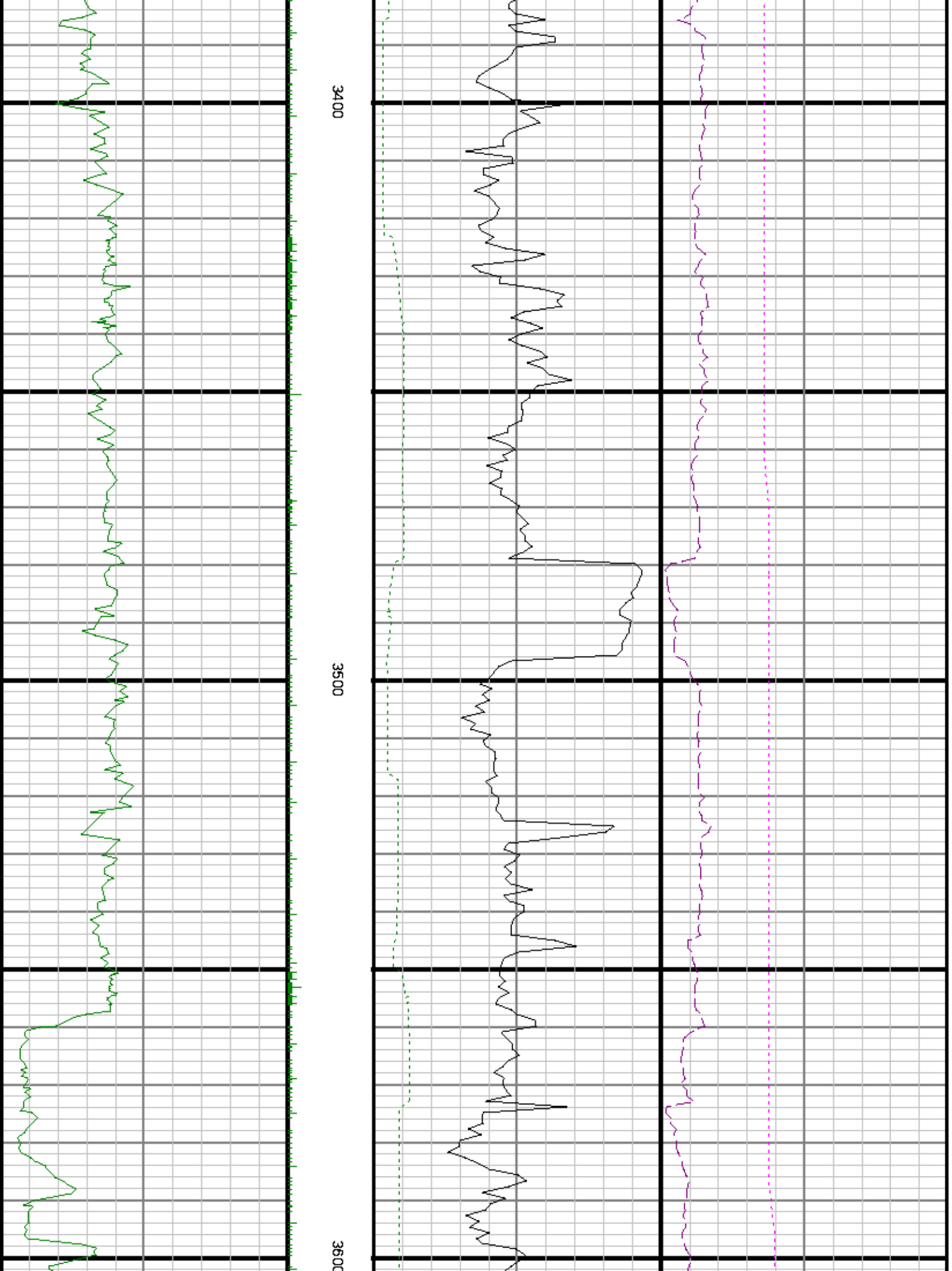
Interval : 2950.00 - 4525.00 feet

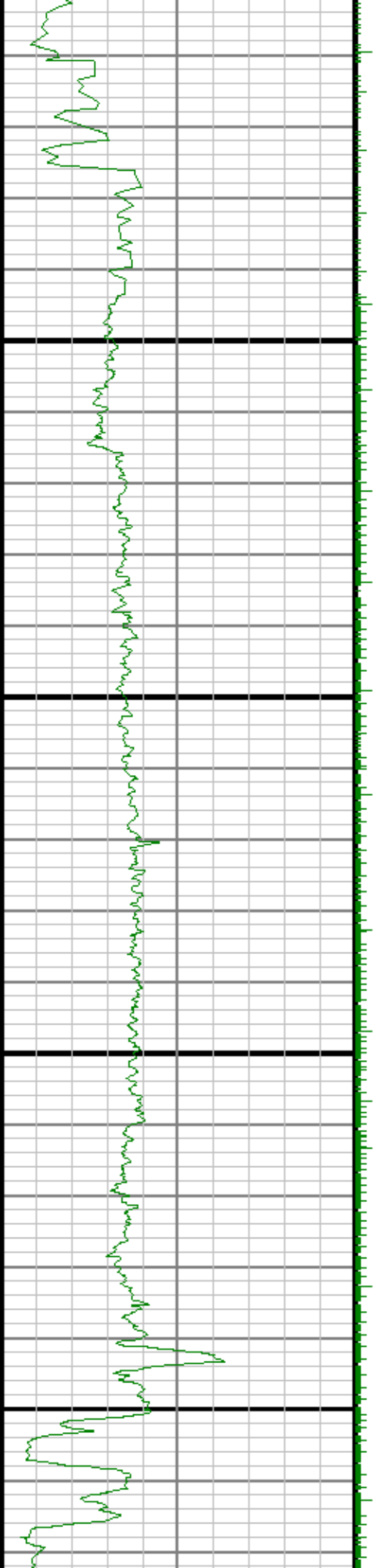
Created : 17/Mar/2014 9:36:21 AM

Gamma Ray Apparent 0.5 ft Avg GRAX □ 350 API	TVD feet: 1.22	Rate Of Penetration 3.0 ft AVG 350 □ ft/hr Gamma Time Since Drilled GRTX □ 600	Surface Weight On Bit 1.0 ft WOB_AVG □ 75 klbf Downhole Temperature TCDX
---	----------------	---	--





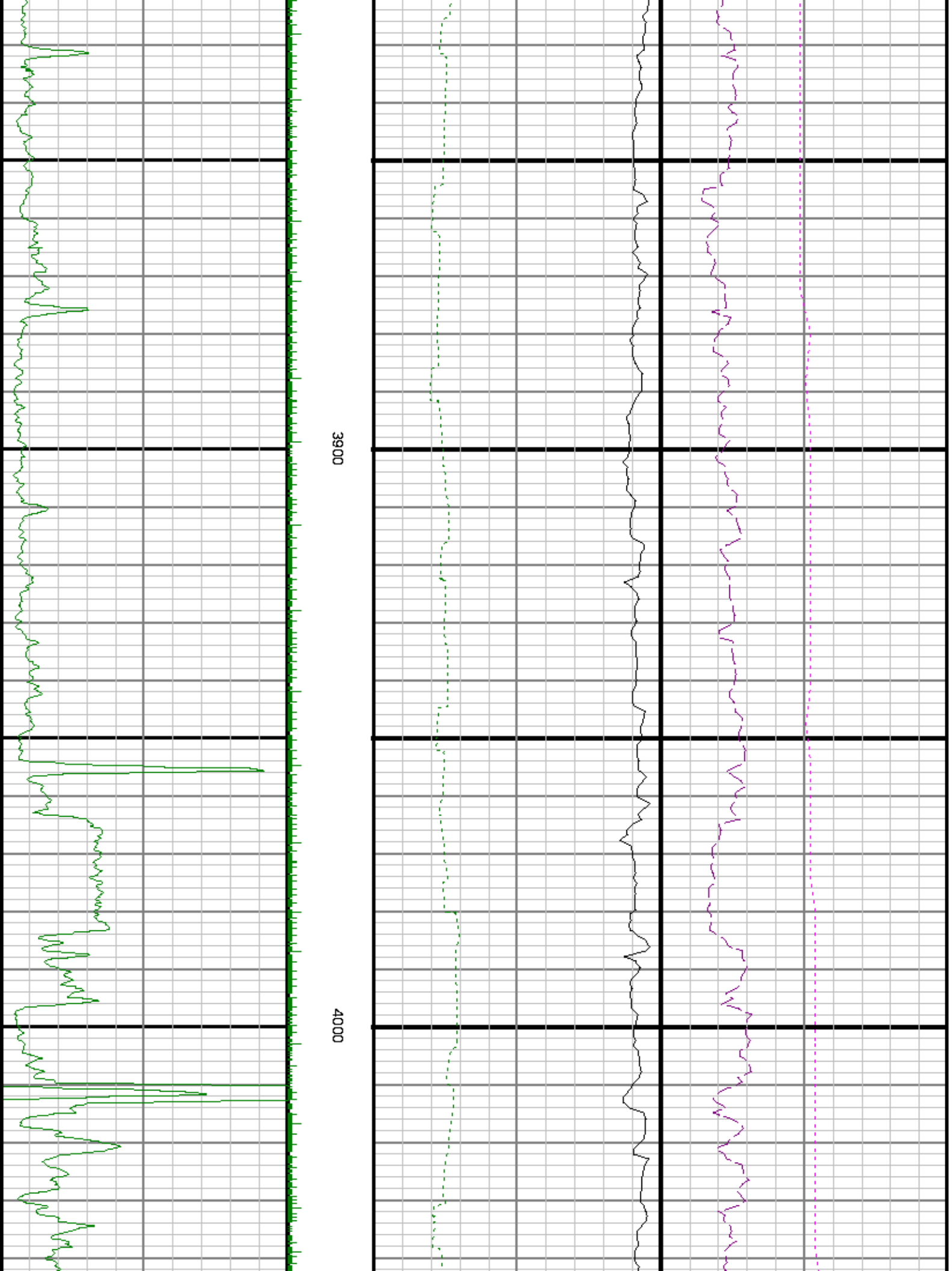




3700

3800

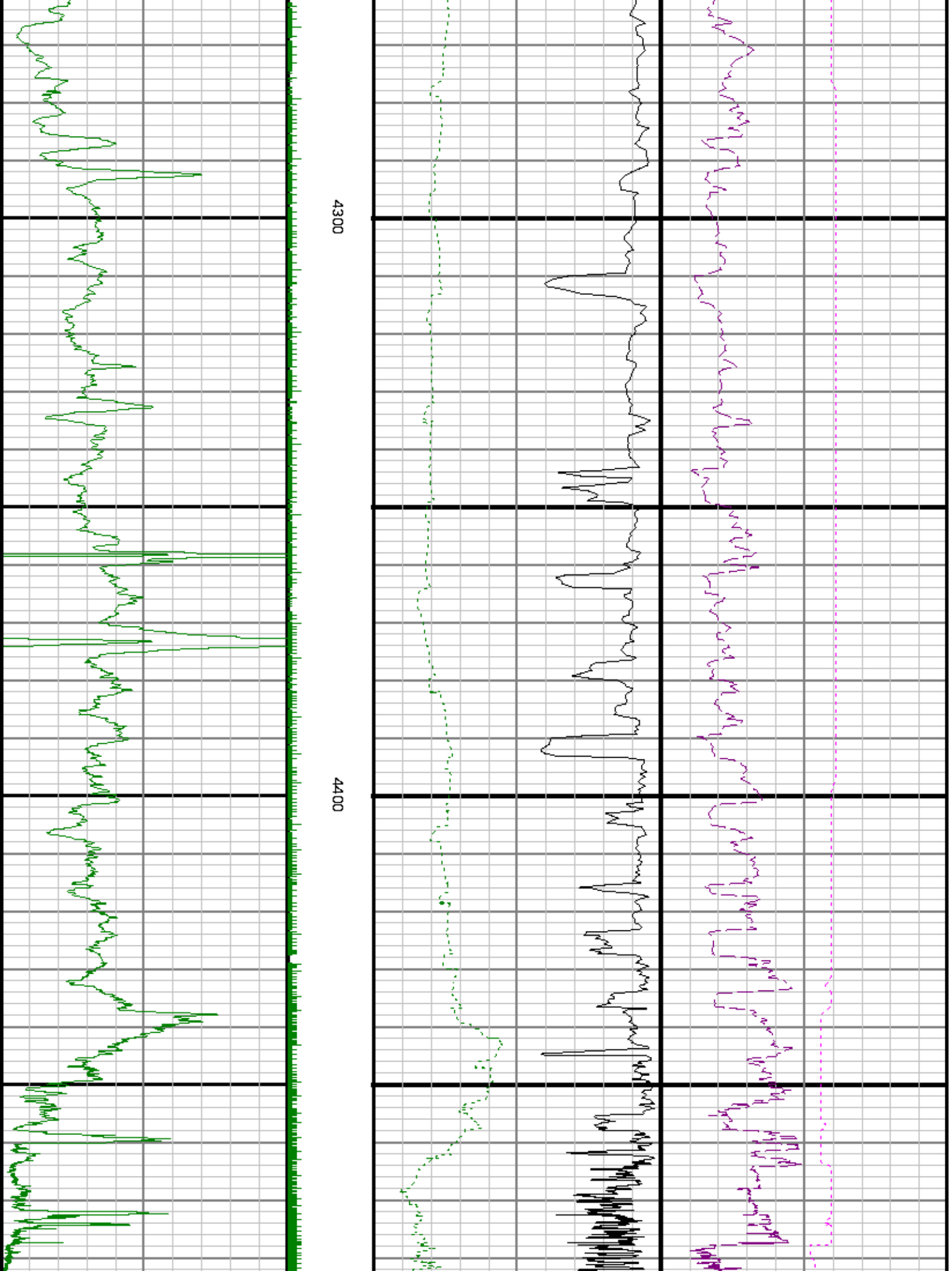






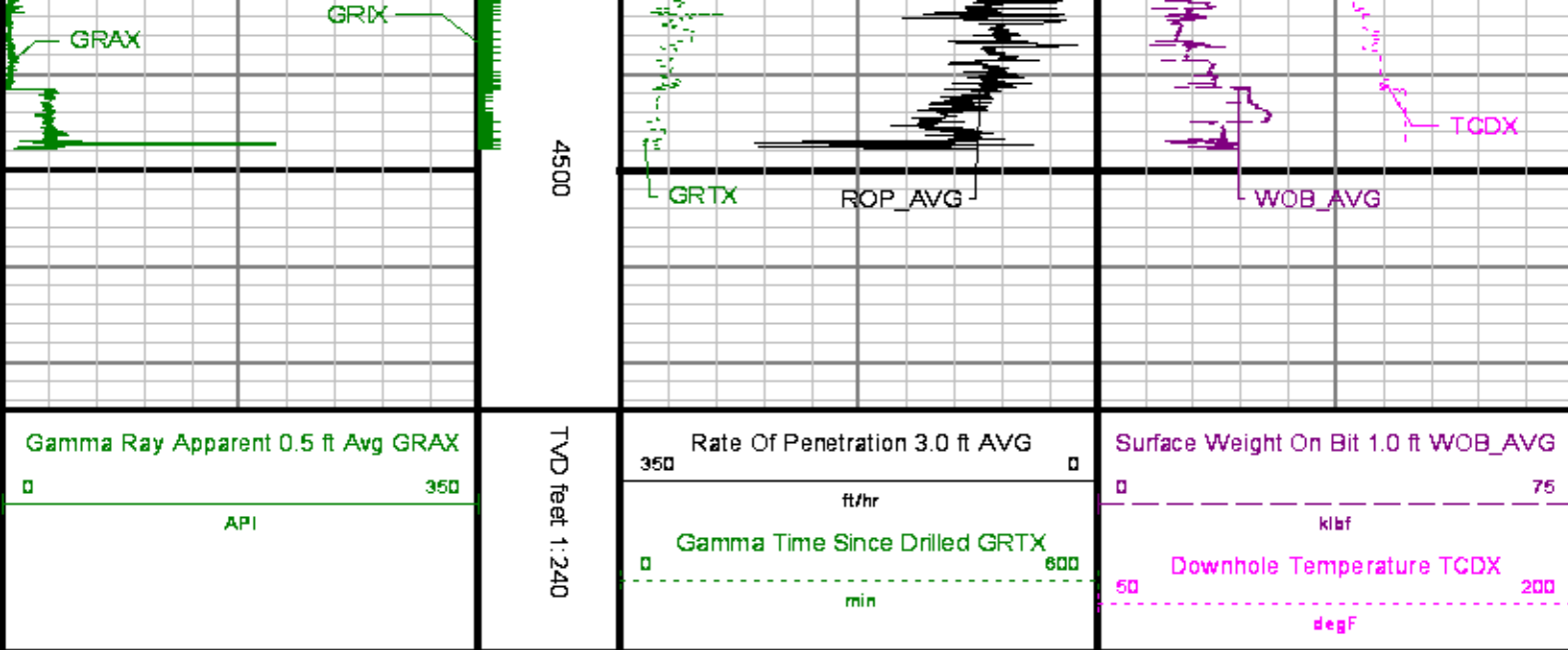
4100

4200



4300

4400



ADVANTAGE Final Survey Listing

Operator : SandRidge Energy, Inc	Field : Harper County	API No : 15077220240100
Well : Suzanne 3306 3-34H	Rig : Unit 310	Job : 6208164
Wellbore : Suzanne 3306 3-34H Orig Hole		

Well Origin

Latitude	37.14 deg	Longitude	-97.95 deg
North Reference	Grid	Drill Depth Zero	NULL
Vertical Datum is	Mean Sea Level	Vertical Datum to DDZ	1296.00 ft
Vertical Section North	0.00 ft	Vertical Section East	0.00 ft
Vertical Section Azimuth	188.44 deg	Vertical Section Depth	0.00ft
Grid Convergence	-0.34 deg	Magnetic Declination	4.44 deg
Total Correction	4.10 deg	TVD Calculation Method	Minimal Curvature
D-Row Calculation	Mageorr1	Local Magnetic Field	51674 nT
Local Magnetic Dip Angle	65.27 deg	Local Gravity Field	9.799 m/s ²

Tie	MD ft	Incl deg	Azim deg	North ft	East ft	TVD ft	VS ft	Incr VS ft	Crs Len ft	DLS deg/100ft	Build deg/100ft	Turn deg/100ft
-----	----------	-------------	-------------	-------------	------------	-----------	----------	---------------	---------------	------------------	--------------------	-------------------

	0.00	0.00	0.00	0.00	0.00	0.00	0.00	0.00				
U	18.00	0.00	0.00			18.00			18.00			
	250.00	0.75	137.34	-1.12	1.03	249.99	0.95	1.52	232.00	0.32	0.32	59.20
	687.00	0.50	137.34	-4.62	4.26	686.97	3.95	6.29	437.00	0.06	-0.06	0.00
	738.00	0.07	137.34	-4.81	4.43	737.97	4.11	6.54	51.00	0.85	-0.85	0.01
	801.00	0.72	284.23	-4.88	4.06	800.96	4.23	6.92	63.00	1.22	1.04	201.40
	862.00	1.99	275.15	-4.82	2.62	861.95	4.38	8.35	61.00	2.10	2.07	17.91
	925.00	2.79	272.84	-4.65	0.00	924.89	4.60	10.98	63.00	1.28	1.27	-3.66
	987.00	3.82	277.64	-4.30	-3.55	986.79	4.77	14.55	62.00	1.71	1.66	7.74
	1049.00	5.03	279.86	-3.56	-8.27	1048.60	4.73	19.33	62.00	1.97	1.95	3.58

	1112.00	5.35	282.10	-2.47	-13.86	1111.34	4.48	25.02	63.00	0.60	0.51	3.56
	1174.00	5.97	286.53	-0.95	-19.77	1173.04	3.84	31.13	62.00	1.22	1.00	7.16
	1236.00	6.19	287.13	0.95	-26.05	1234.69	2.88	37.69	62.00	0.37	0.36	0.96
	1329.00	6.55	287.60	4.03	-35.90	1327.12	1.28	48.01	93.00	0.39	0.39	0.50
	1380.00	7.09	287.38	5.14	-39.41	1357.90	0.70	51.69	31.00	1.73	1.73	-0.71
	1453.00	6.77	283.05	8.09	-50.22	1450.22	-0.63	62.89	93.00	0.66	-0.34	-4.66
	1548.00	6.51	289.52	11.15	-60.75	1544.59	-2.11	73.86	95.00	0.83	-0.27	6.81
	1642.00	6.86	290.06	14.86	-71.04	1637.95	-4.27	84.80	94.00	0.38	0.37	0.58
	1737.00	7.62	287.10	18.65	-82.39	1732.19	-6.36	96.77	95.00	0.89	0.80	-3.11
	1832.00	7.84	285.91	22.28	-94.65	1826.33	-8.15	109.55	95.00	0.29	0.23	-1.25

1927.00	7.22	284.35	25.54	-106.67	1920.51	-9.61	122.00	95.00	0.69	-0.66	-1.64	
2022.00	6.95	285.05	28.51	-118.00	2014.78	-10.89	133.71	95.00	0.30	-0.29	0.73	
2117.00	7.70	290.20	32.20	-129.51	2109.01	-12.84	145.80	95.00	1.05	0.79	5.42	
2212.00	7.54	293.98	36.93	-141.18	2203.17	-15.81	158.39	95.00	0.55	-0.16	3.99	
2307.00	7.00	285.67	41.03	-152.45	2297.41	-18.21	170.38	95.00	1.24	-0.57	-8.75	
2402.00	6.86	283.72	43.94	-163.54	2391.71	-19.46	181.85	95.00	0.29	-0.15	-2.05	
2496.00	6.26	283.57	46.47	-173.98	2485.10	-20.43	192.59	94.00	0.64	-0.64	-0.16	
2591.00	7.10	284.86	49.19	-184.69	2579.45	-21.55	203.64	95.00	0.89	0.88	1.36	
2686.00	7.87	288.48	52.76	-196.53	2673.64	-23.34	216.01	95.00	0.95	0.81	3.82	
2781.00	6.58	290.24	56.71	-207.81	2767.89	-25.59	227.96	95.00	1.38	-1.36	1.85	
2876.00	7.76	292.15	61.01	-218.85	2862.14	-28.22	239.81	95.00	1.26	1.24	2.01	
2970.00	7.87	290.70	65.67	-230.75	2955.27	-31.09	252.59	94.00	0.24	0.12	-1.54	
3065.00	7.77	287.72	69.93	-242.95	3049.38	-33.51	265.51	95.00	0.44	-0.10	-3.14	
3160.00	6.27	284.68	73.20	-254.09	3143.67	-35.11	277.12	95.00	1.63	-1.59	-3.20	
3255.00	7.08	288.48	76.37	-264.65	3238.03	-36.70	288.15	95.00	0.97	0.85	4.00	
3349.00	7.73	285.90	79.93	-276.22	3331.24	-38.53	300.26	94.00	0.78	0.69	-2.74	
3444.00	7.13	284.58	83.17	-288.07	3425.44	-39.99	312.54	95.00	0.66	-0.63	-1.39	
3508.00	8.30	288.29	85.62	-296.30	3488.86	-41.20	321.13	64.00	1.98	1.83	5.80	
3571.00	8.35	290.35	88.64	-304.91	3551.20	-42.92	330.25	63.00	0.48	0.08	3.26	
3634.00	7.63	286.11	91.39	-313.22	3613.59	-44.43	339.00	63.00	1.47	-1.13	-6.72	
3686.00	7.06	283.40	92.43	-317.17	3645.33	-44.88	343.09	32.00	2.11	-1.81	-8.48	
3729.00	7.02	272.84	93.52	-324.78	3707.85	-44.84	350.78	63.00	2.05	-0.05	-16.76	
3781.00	7.95	259.03	93.20	-328.91	3739.58	-43.91	354.92	32.00	6.31	2.90	-43.18	
3792.00	9.57	250.88	91.94	-333.45	3770.22	-42.01	359.63	31.00	6.56	5.22	-26.29	
3824.00	11.05	242.33	89.65	-338.68	3801.71	-38.97	365.34	32.00	6.65	4.64	-26.72	
3855.00	13.18	236.29	86.31	-344.25	3832.02	-34.84	371.84	31.00	7.98	6.87	-19.46	
3887.00	15.12	227.20	81.44	-350.35	3863.05	-29.14	379.64	32.00	9.20	6.06	-28.42	
3919.00	17.23	221.15	75.04	-356.53	3893.78	-21.89	388.54	32.00	8.43	6.60	-18.89	
3950.00	19.69	215.56	67.33	-362.59	3923.19	-13.38	398.35	31.00	9.74	7.91	-18.03	
3982.00	22.06	211.23	57.80	-368.85	3953.09	-3.04	409.74	32.00	8.84	7.41	-13.54	
Tie	MD	Incl	Azim	North	East	TVD	VS	Incr VS	Crs Len	DLS	Build	Turn
	ft	deg	deg	ft	ft	ft	ft	ft	ft	deg/100ft	deg/100ft	deg/100ft
4014.00	24.14	206.88	46.83	-374.92	3982.52	8.71	422.28	32.00	8.42	6.52	-13.60	
4046.00	26.27	201.15	34.38	-380.44	4011.48	21.83	436.90	32.00	10.11	6.64	-17.91	
4077.00	28.46	198.15	20.96	-385.21	4039.01	35.80	450.14	31.00	8.35	7.07	-9.68	
4109.00	30.60	197.74	5.96	-390.07	4066.85	51.36	465.91	32.00	6.71	6.68	-1.29	
4140.00	32.96	197.50	-9.60	-395.01	4093.20	67.47	482.24	31.00	7.65	7.64	-0.76	
4172.00	35.74	197.61	-26.81	-400.45	4119.62	85.30	500.29	32.00	8.66	8.66	0.34	
4204.00	38.43	197.02	-45.23	-406.19	4145.14	104.36	519.58	32.00	8.50	8.42	-1.86	
4235.00	40.66	196.90	-64.11	-411.95	4169.05	123.88	539.32	31.00	7.19	7.18	-0.39	
4267.00	42.44	198.09	-84.35	-418.33	4192.99	144.84	560.54	32.00	6.08	5.56	3.72	
4299.00	43.92	197.15	-105.22	-424.96	4216.33	166.45	582.44	32.00	5.06	4.65	-2.92	
4330.00	45.23	197.60	-125.98	-431.46	4238.41	187.95	604.19	31.00	4.33	4.21	1.46	
4362.00	47.68	196.56	-148.15	-438.26	4260.45	210.88	627.39	32.00	8.04	7.68	-3.28	
4394.00	50.09	194.98	-171.36	-444.81	4281.50	234.79	651.49	32.00	8.38	7.52	-4.92	
4425.00	53.04	194.19	-194.85	-450.92	4300.76	259.93	676.77	31.00	9.72	9.51	-2.55	
4457.00	54.97	193.76	-219.97	-457.17	4319.57	284.69	701.66	32.00	6.13	6.03	-1.33	
4488.00	57.33	193.57	-244.99	-463.25	4336.84	310.33	727.40	31.00	7.65	7.63	-0.63	
4520.00	59.57	193.96	-271.48	-469.74	4353.58	337.48	754.67	32.00	7.08	7.00	1.24	
4552.00	61.75	194.56	-298.51	-476.61	4369.26	365.23	782.57	32.00	7.00	6.81	1.86	
4583.00	63.91	194.63	-325.20	-483.56	4383.41	392.65	810.14	31.00	6.97	6.97	0.24	
4615.00	66.10	193.92	-353.30	-490.71	4396.93	421.50	839.15	32.00	7.13	6.83	-2.24	
4646.00	67.97	193.48	-381.03	-497.47	4409.03	449.92	867.69	31.00	6.18	6.04	-1.41	
4678.00	70.03	193.37	-410.09	-504.41	4420.49	479.68	897.56	32.00	6.43	6.42	-0.34	
4710.00	71.75	193.06	-439.52	-511.32	4430.97	509.81	927.79	32.00	5.45	5.38	-0.96	
4741.00	73.91	192.86	-468.39	-517.96	4440.12	539.34	957.41	31.00	7.01	6.98	-0.64	
4773.00	77.05	192.70	-498.59	-524.81	4448.15	570.22	988.38	32.00	9.81	9.80	-0.51	
4805.00	80.01	193.73	-529.12	-531.98	4454.51	601.47	1019.74	32.00	9.78	9.26	3.22	
4869.00	84.10	193.56	-590.70	-546.93	4463.35	664.58	1083.11	64.00	6.40	6.39	-0.26	
4932.00	85.85	193.89	-651.67	-561.82	4468.87	727.07	1145.87	63.00	2.82	2.77	0.53	
4996.00	86.54	193.06	-713.76	-576.71	4473.12	790.68	1209.73	64.00	1.69	1.09	-1.30	
5059.00	87.91	193.91	-774.95	-591.38	4476.17	853.36	1272.65	63.00	2.55	2.16	1.35	
5122.00	89.45	194.20	-836.05	-606.68	4477.63	916.04	1335.63	63.00	2.49	2.45	0.46	

5169.00	90.49	194.40	-881.59	-618.29	4477.65	962.79	1382.83	47.00	2.26	2.23	0.41	
5269.00	91.48	193.77	-978.57	-642.62	4475.93	1082.29	1482.81	100.00	1.17	0.98	-0.63	
5351.00	88.95	192.28	-1058.45	-661.09	4475.63	1144.02	1584.80	82.00	3.59	-3.08	-1.84	
5397.00	87.97	190.82	-1103.50	-670.29	4476.86	1189.93	1610.59	46.00	3.80	-2.15	-3.13	
5493.00	88.71	186.18	-1198.38	-684.46	4479.65	1285.87	1706.52	96.00	4.89	0.77	-4.83	
5587.00	89.02	184.80	-1291.93	-693.45	4481.52	1379.72	1800.50	94.00	1.51	0.33	-1.47	
5651.00	89.23	183.12	-1355.77	-697.87	4482.50	1443.52	1864.49	64.00	2.64	0.34	-2.62	
5746.00	89.57	181.92	-1450.67	-702.04	4483.50	1538.00	1959.48	95.00	1.32	0.36	-1.27	
5841.00	90.09	181.81	-1545.62	-705.13	4483.78	1632.38	2054.48	95.00	0.56	0.55	-0.11	
5936.00	88.31	180.78	-1640.58	-707.28	4485.10	1726.62	2149.47	95.00	2.17	-1.88	-1.08	
6031.00	88.74	179.83	-1735.55	-707.79	4487.56	1820.64	2244.43	95.00	1.10	0.45	-1.00	
6126.00	89.11	179.40	-1830.53	-707.15	4489.35	1914.49	2339.42	95.00	0.60	0.39	-0.46	
6221.00	89.38	179.76	-1925.52	-706.45	4490.60	2008.35	2434.41	95.00	0.48	0.29	0.39	
6315.00	89.72	179.46	-2019.51	-705.81	4491.33	2101.23	2528.40	94.00	0.49	0.36	-0.33	
6410.00	89.97	179.15	-2114.50	-704.66	4491.58	2195.03	2623.40	95.00	0.41	0.26	-0.32	
6505.00	90.62	179.46	-2209.49	-703.51	4491.10	2288.82	2718.40	95.00	0.76	0.68	0.33	
6600.00	90.49	179.33	-2304.49	-702.51	4490.18	2382.64	2813.40	95.00	0.19	-0.13	-0.14	
6695.00	90.46	179.19	-2399.47	-701.29	4489.39	2476.42	2908.39	95.00	0.15	-0.03	-0.15	
6790.00	90.03	178.82	-2494.46	-699.63	4488.98	2570.13	3003.39	95.00	0.60	-0.45	-0.39	
Tie	MD ft	Incl deg	Azim deg	North ft	East ft	TVD ft	VS ft	Incr VS ft	Crs Len ft	DLS deg/100ft	Build deg/100ft	Turn deg/100ft
6884.00	90.74	178.74	-2588.43	-697.63	4488.35	2662.80	3097.39	94.00	0.76	0.75	-0.08	
6979.00	89.38	179.42	-2683.42	-696.11	4488.25	2756.53	3192.39	95.00	1.60	-1.43	0.72	
7074.00	89.29	180.70	-2778.41	-696.21	4489.34	2850.51	3287.38	95.00	1.35	-0.10	1.35	
7169.00	90.25	180.80	-2873.40	-697.46	4489.73	2944.65	3382.38	95.00	1.01	1.00	0.10	
7264.00	90.80	180.76	-2968.39	-698.75	4488.86	3038.80	3477.37	95.00	0.59	0.58	-0.04	
7359.00	90.18	180.59	-3063.38	-699.87	4488.04	3132.92	3572.37	95.00	0.67	-0.65	-0.18	
7454.00	90.62	182.09	-3158.35	-702.09	4487.38	3227.19	3667.36	95.00	1.64	0.45	1.58	
7549.00	89.23	181.53	-3253.30	-705.09	4487.51	3321.55	3762.36	95.00	1.57	-1.46	-0.59	
7644.00	90.09	180.69	-3348.27	-706.93	4488.07	3415.77	3857.36	95.00	1.26	0.91	-0.88	
7739.00	91.57	182.14	-3443.23	-709.28	4486.69	3510.04	3952.34	95.00	2.18	1.56	1.52	
7833.00	89.82	181.37	-3537.17	-712.16	4485.55	3603.39	4046.33	94.00	2.04	-1.87	-0.81	
7928.00	86.61	180.95	-3632.10	-714.09	4488.51	3697.57	4141.27	95.00	3.40	-3.37	-0.44	
8023.00	87.81	180.93	-3726.97	-715.66	4493.13	3791.65	4236.16	95.00	1.26	1.26	-0.02	
8118.00	88.77	181.61	-3821.90	-717.76	4495.96	3885.66	4331.11	95.00	1.23	1.00	0.71	
8212.00	90.03	180.95	-3915.87	-719.86	4496.95	3979.12	4425.11	94.00	1.51	1.34	-0.69	
8307.00	89.35	180.90	-4010.86	-721.40	4497.46	4073.30	4520.10	95.00	0.71	-0.71	-0.06	
8402.00	90.25	182.13	-4105.82	-723.91	4497.79	4167.60	4615.10	95.00	1.60	0.94	1.30	
8497.00	91.11	182.25	-4200.74	-727.54	4496.67	4262.03	4710.09	95.00	0.92	0.91	0.13	
8592.00	90.58	181.35	-4295.68	-730.53	4495.26	4356.38	4805.08	95.00	1.10	-0.55	-0.95	
8686.00	92.40	181.62	-4389.62	-732.96	4492.81	4449.66	4899.05	94.00	1.96	1.94	0.28	
8781.00	92.37	181.80	-4484.49	-735.79	4488.85	4543.92	4993.96	95.00	0.19	-0.04	0.19	
8876.00	91.88	179.69	-4579.41	-737.02	4485.33	4637.99	5088.89	95.00	2.28	-0.52	-2.22	
8968.00	91.79	180.69	-4671.36	-737.32	4482.39	4728.99	5180.84	92.00	1.09	-0.10	1.08	
Projection to TD:												
9027.00	91.79	180.69	-4730.33	-738.02	4480.55	4787.42	5239.82	59.00	0.00	0.00	0.00	