

MIDWEST SURVEYS

LOGGING - PERFORATING - CONSULTING SERVICES
 P.O. Box 60, Osawatomie, KS 66064
 913 / 755 - 2128

GAMMA RAY / NEUTRON / CCL

API# 15-001-31,094

File No.

Company **Haas Petroleum, LLC.**

Well **Miewes No. 7-HP**

Field **Iola**

County **Allen**

State **Kansas**

Location

**1155' FNL & 1540' FEL
 SE-SE-NW-NE**

Other Services
Perforate

Sec. 8

Twp. 24S

Rge. 19E

Permanent Datum

GL

Elevation

1061'

Log Measured From

GL

Elevation

Drilling Measured From

GL

K.B. NA
 D.F. NA
 G.L. 1061'

Date

06-24-2014

Run Number

One

Depth Driller

1019.0

Depth Logger

1013.0

Bottom Logged Interval

1012.0

Top Log Interval

20.0

Fluid Level

Full

Type Fluid

Water

Density / Viscosity

NA

Salinity - PPM Cl

NA

Max Recorded Temp

NA

Estimated Cement Top

0.0

Equipment No.

102

Recorded By

Osawatimie

Witnessed By

Gay Windisch

Witnessed By

John Haas

Location

Osawatimie

Location

Osawatimie

Location

Osawatimie

Location

Osawatimie

Location

Osawatimie

Location

Osawatimie

Location

Osawatimie

Location

Osawatimie

Location

Osawatimie

BORE-HOLE RECORD				CASING RECORD			
NO.	BIT	FROM	TO	SIZE	WGT.	FROM	TO
One	9.875"	0.0	20.0	7.00"	17.0#	0.0	20.0
Two	5.625"	20.0	1019.0	2.875"	6.5#	0.0	1016.90

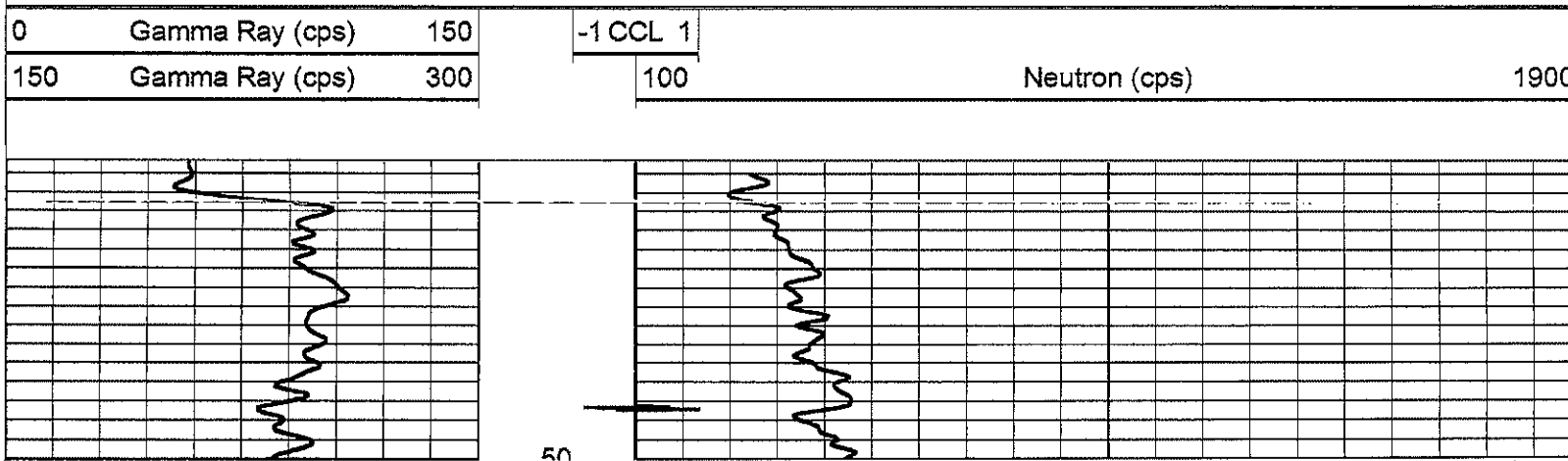
<<< Fold Here >>>

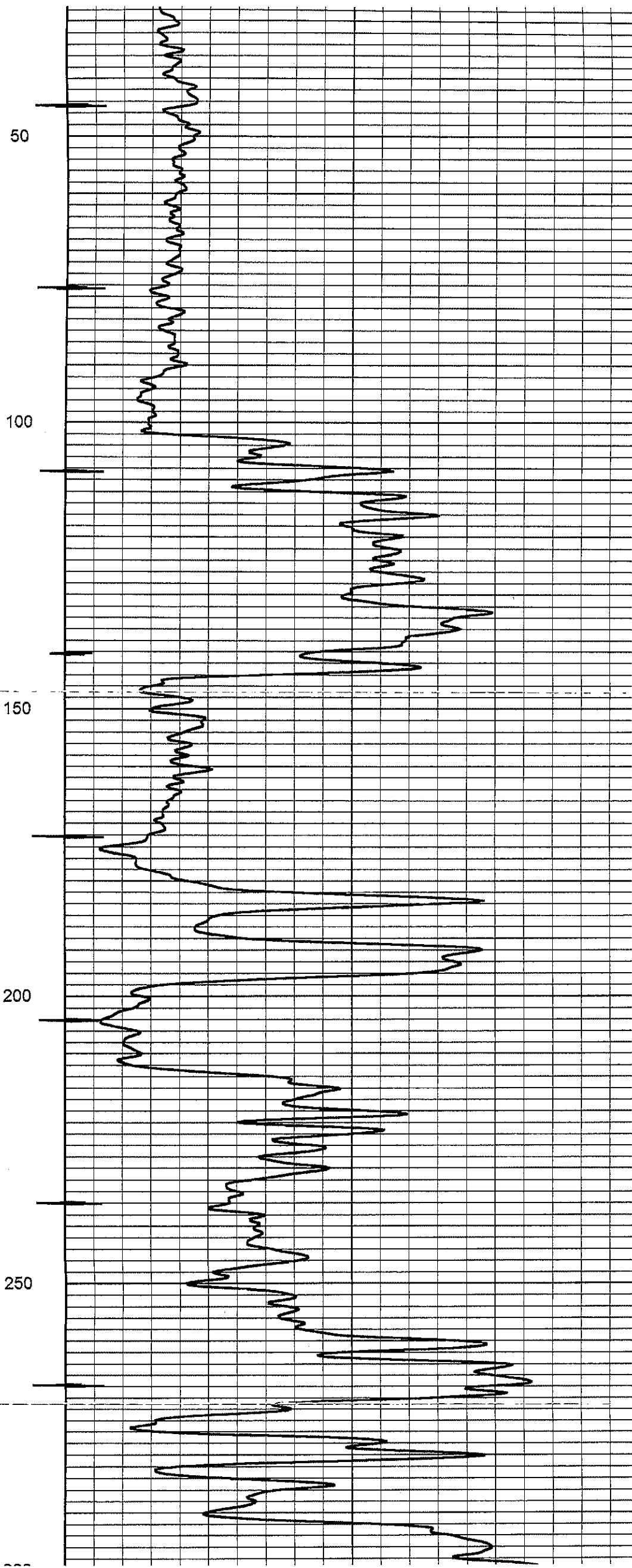
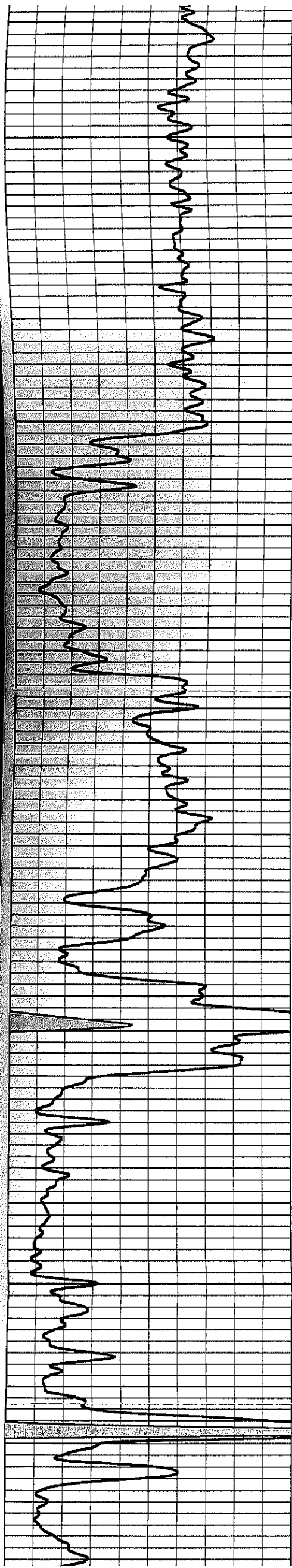
All interpretations are opinions based on inferences from electrical or other measurements and we cannot and do not guarantee the accuracy or correctness of any interpretation, and we shall not, except in the case of gross or willful negligence on our part, be liable or responsible for any loss, costs, damages, or expenses incurred or sustained by anyone resulting from any interpretation made by any of our officers, agents or employees. These interpretations are also subject to our general terms and conditions set out in our current Price Schedule.

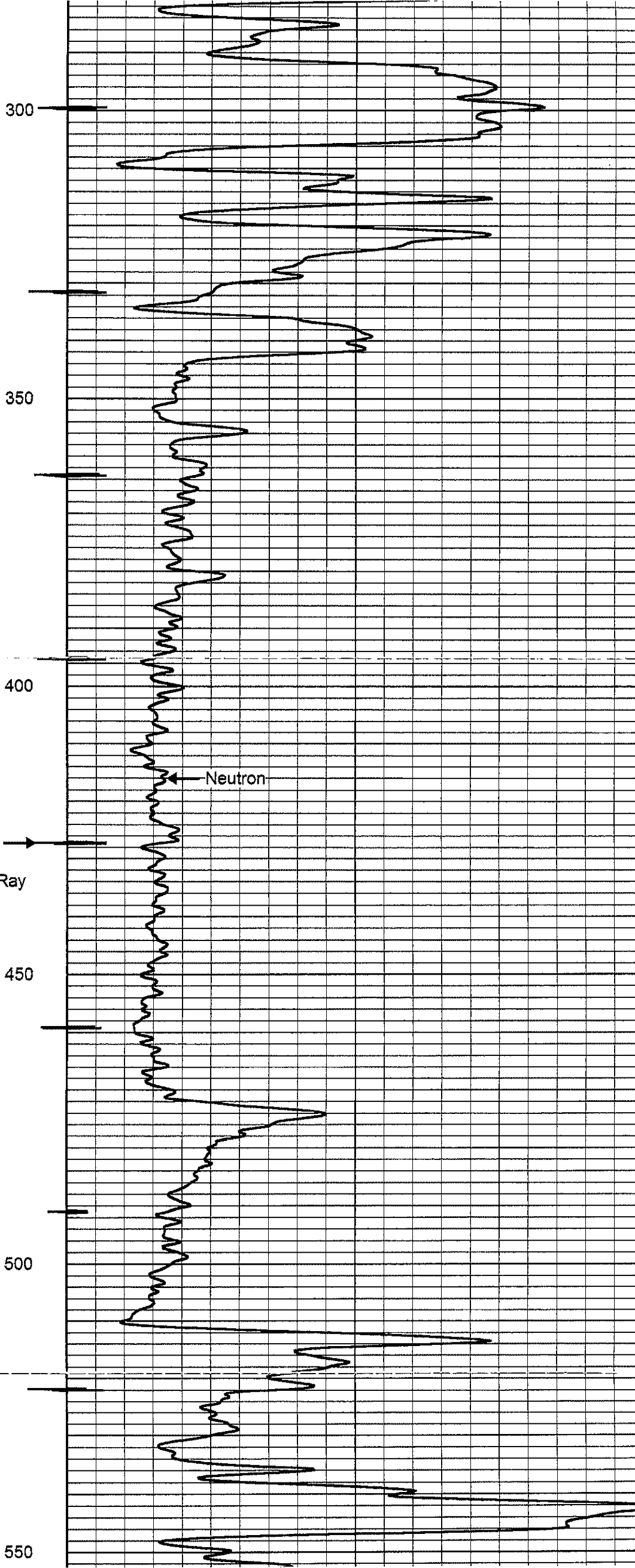
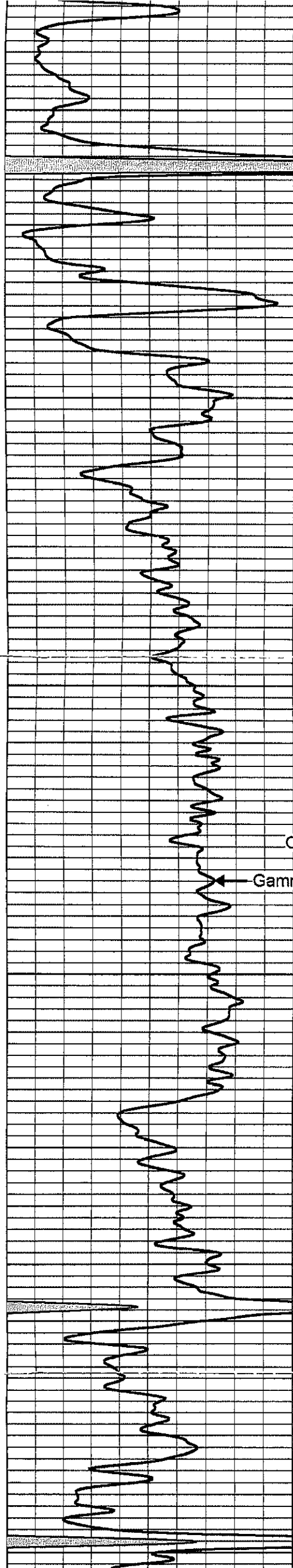
Comments

Drilling Contractor :
 Town Oilfield Services, Inc.

Database File: miewes7hp.db
 Dataset Pathname: pass1
 Presentation Format: gr-n-ccl
 Dataset Creation: Tue Jun 24 11:36:08 2014 by Log SCH 111116
 Charted by: Depth in Feet scaled 1:240



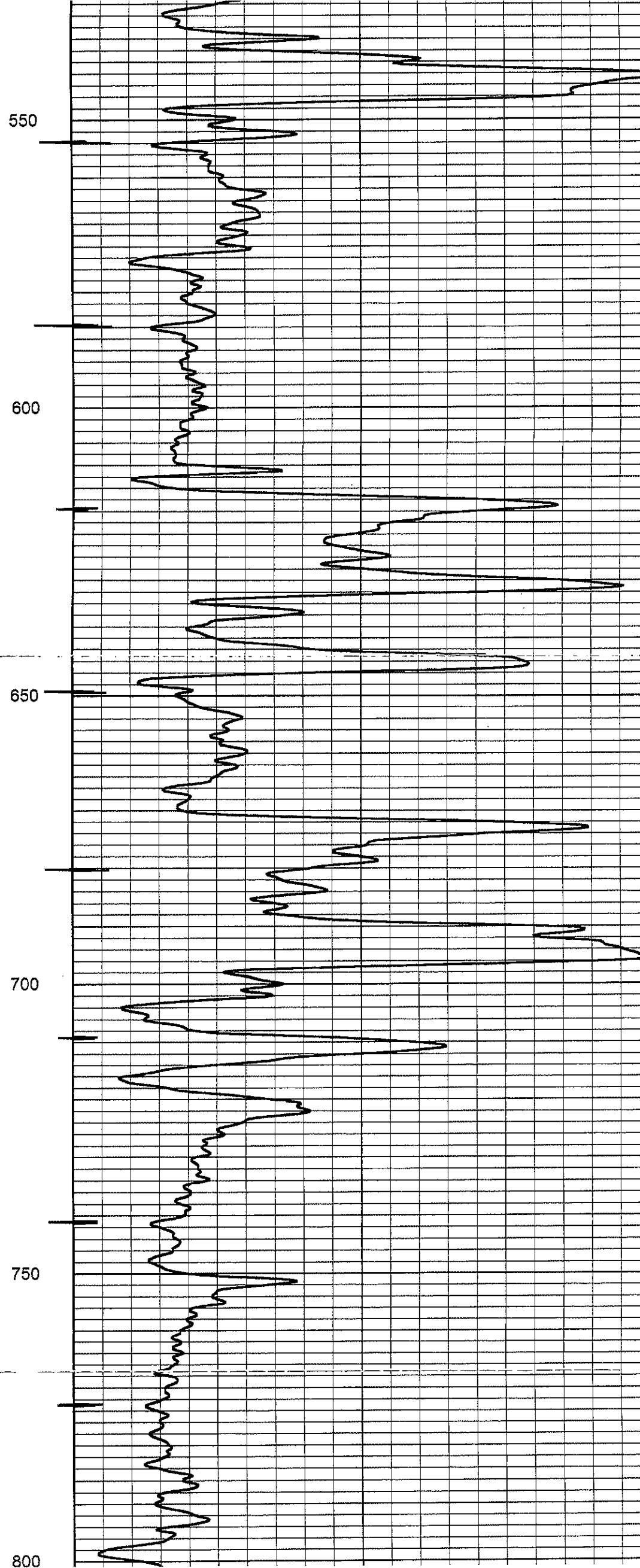
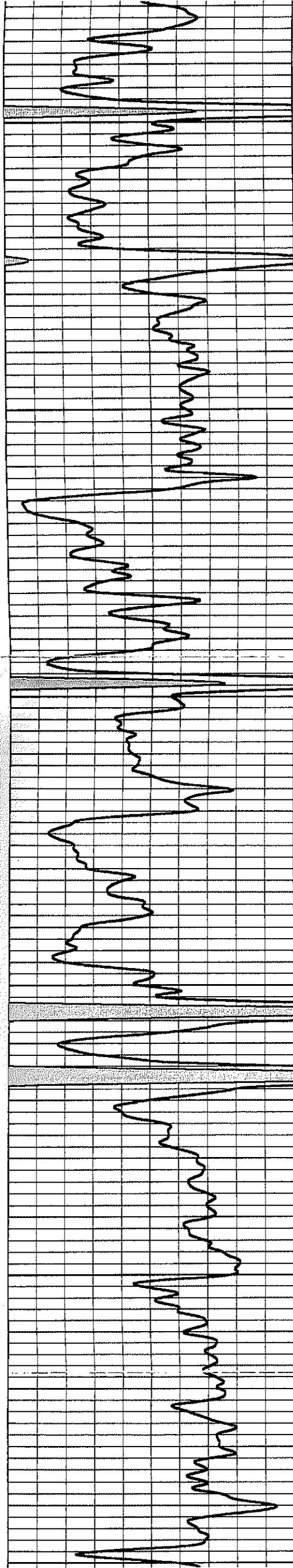


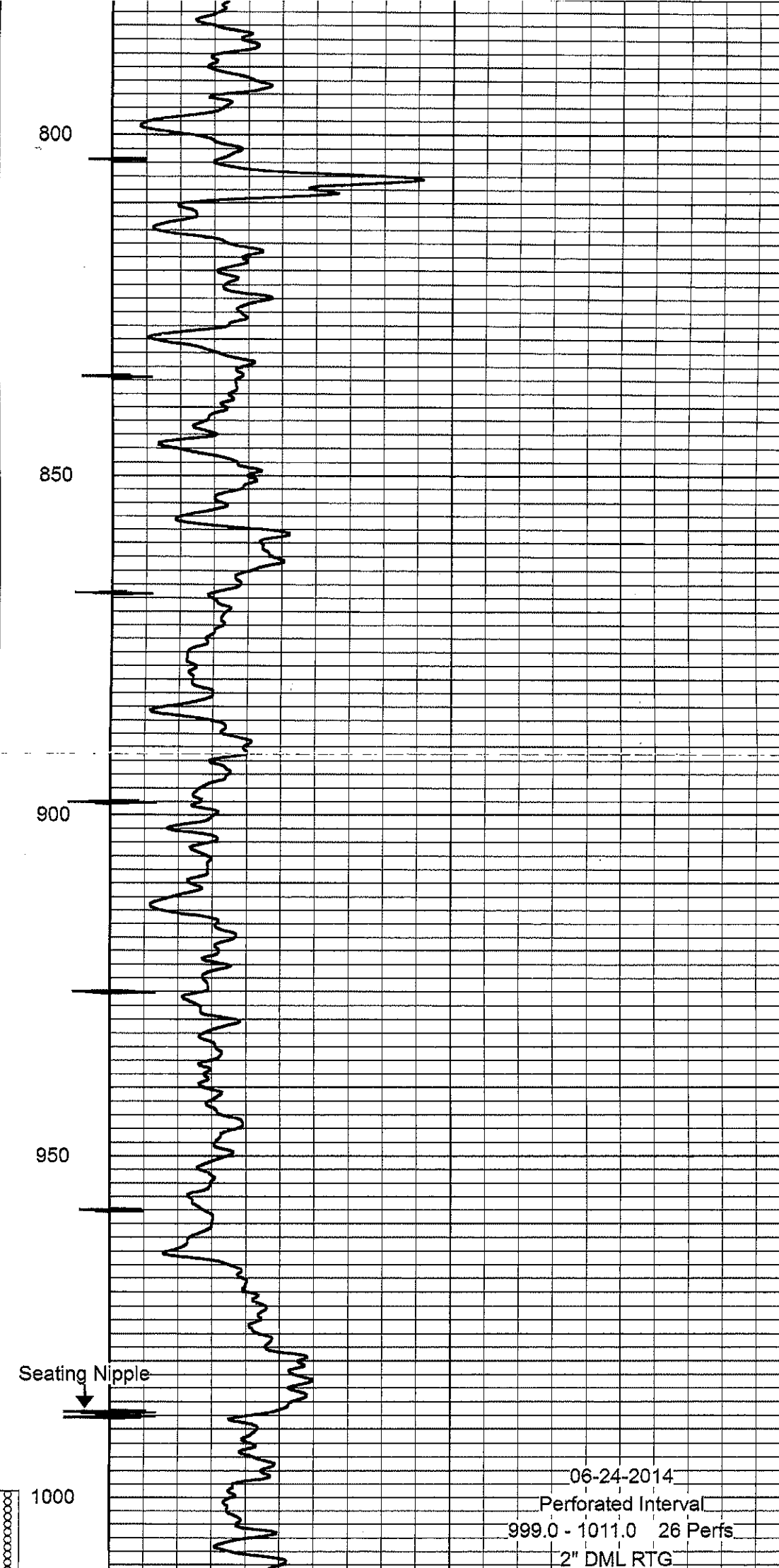
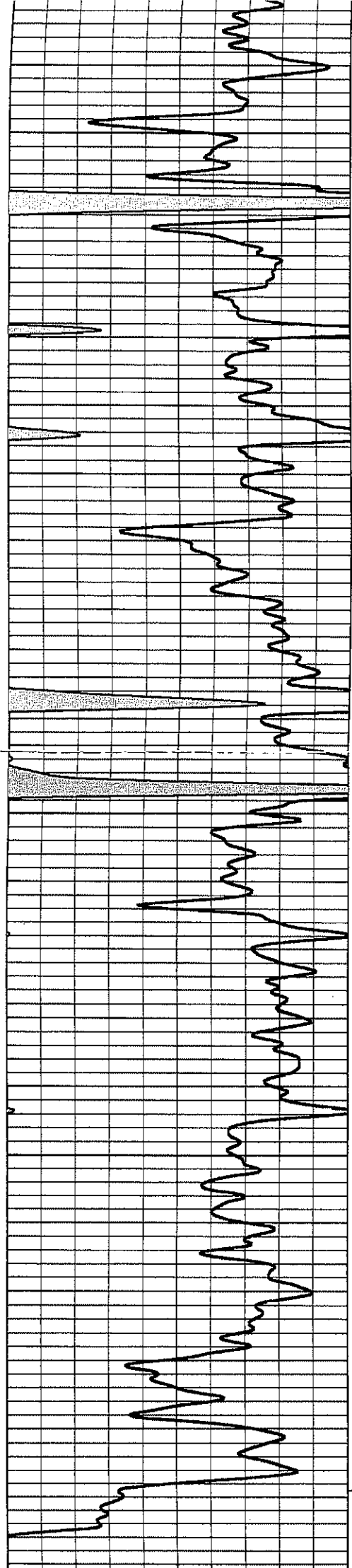


CCL

Gamma Ray

Neutron





06-24-2014
 Perforated Interval
 999.0 - 1011.0 26 Perfs
 2" DML RTG

0	Gamma Ray (cps)	150
150	Gamma Ray (cps)	300

100	1 CCL 1	100
-----	---------	-----

100	Neutron (cps)	1900
-----	---------------	------