

**MIDWEST SURVEYS**  
 LOGGING - PERFORATING - CONSULTING SERVICES  
 P.O. Box 68, Osawatomie, KS 66064  
 913 / 755 - 2128

**GAMMA RAY / NEUTRON / CCL**

File No.

API# 15-001-31,088

Company **Haas Petroleum, LLC.**

Well **Miewes No. 6-HP**

Field **Iola**

County **Allen** State **Kansas**

Location

**1155' FNL & 1830' FEL  
 SW-SE-NW-NE**

Other Services  
**Perforate**

Sec. **8** Twp. **24S** Rge. **19E**

Permanent Datum **GL** Elevation **1072'**

Log Measured From **GL**

Drilling Measured From **GL**

Elevation  
 K.B. NA  
 D.F. NA  
 G.L. 1072'

Date **07-02-2014**

Run Number **One**

Depth Driller **1030.0**

Depth Logger **1025.0**

Bottom Logged Interval **1024.0**

Top Log Interval **20.0**

Fluid Level **Full**

Type Fluid **Water**

Density / Viscosity **NA**

Salinity - PPM Cl **NA**

Max Recorded Temp **NA**

Estimated Cement Top **0.0**

Equipment No. **102** Location **Osawatomie**

Recorded By **Gary Wfrindsch**

Witnessed By **John Haas**

RUN

BORE-HOLE RECORD

CASING RECORD

No.	BIT	FROM		SIZE	WGT.	FROM		TO
		FROM	TO			FROM	TO	
One	12.25"	0.0	20.0	8.625"	24.0 #	0.0	0.0	20.0
Two	6.75"	20.0	1030.0	4.50"	10.5 #	0.0	0.0	1026.29

<<< Fold Here >>>

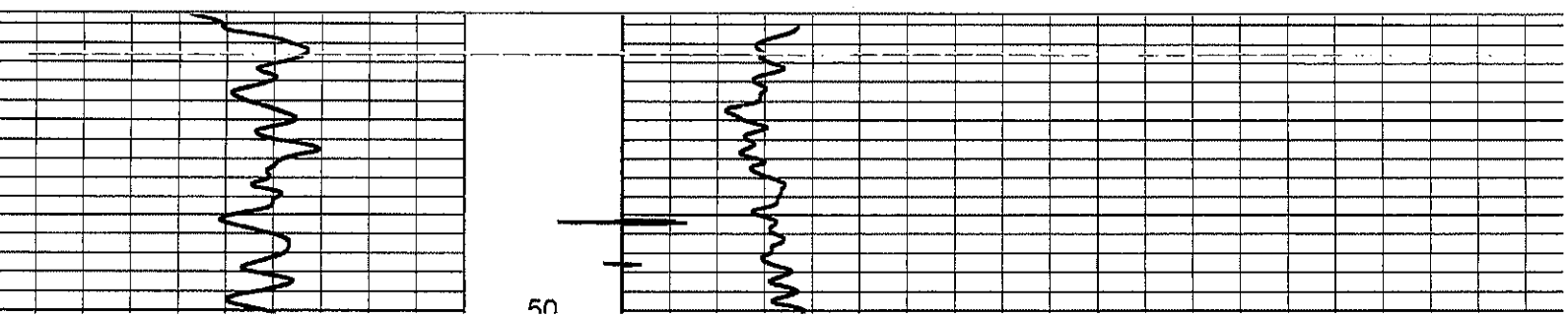
All interpretations are opinions based on inferences from electrical or other measurements and we cannot and do not guarantee the accuracy or correctness of any interpretation, and we shall not, except in the case of gross or willful negligence on our part, be liable or responsible for any loss, costs, damages, or expenses incurred or sustained by anyone resulting from any interpretation made by any of our officers, agents or employees. These interpretations are also subject to our general terms and conditions set out in our current Price Schedule.

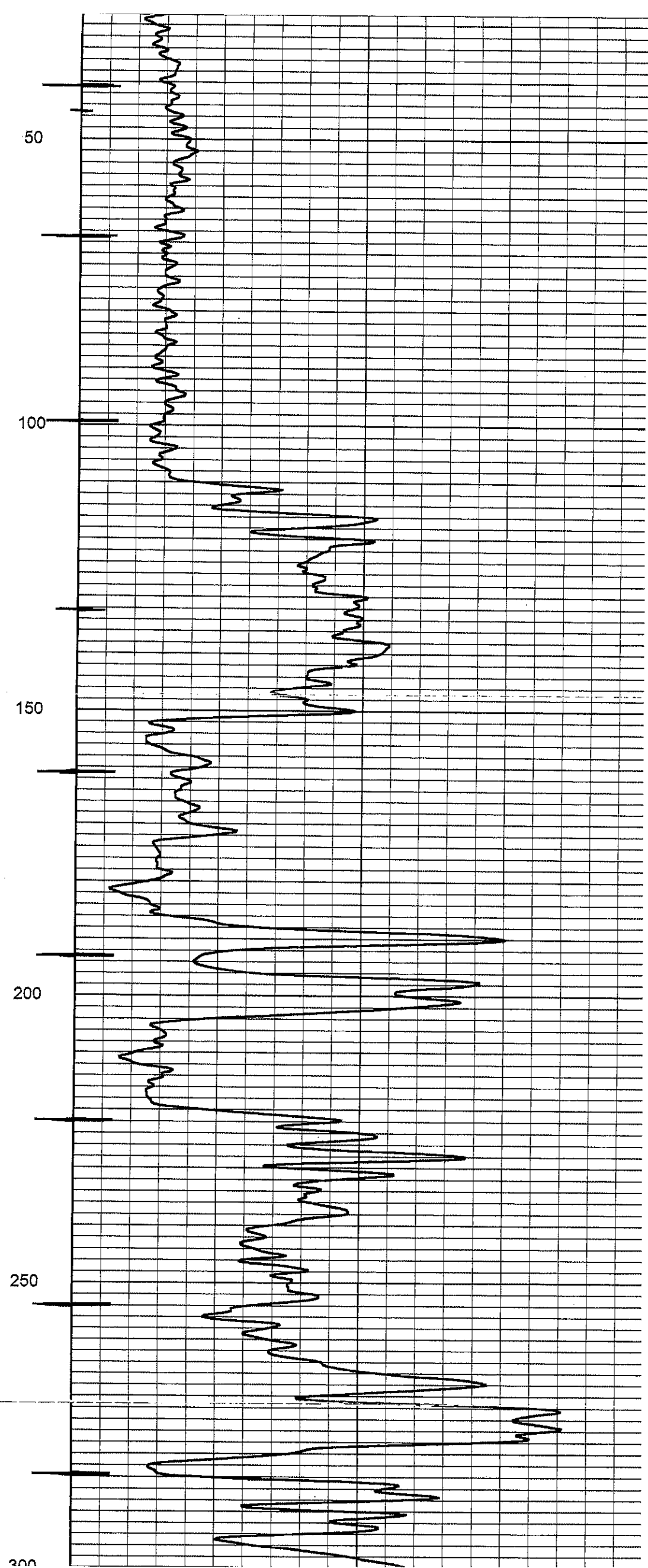
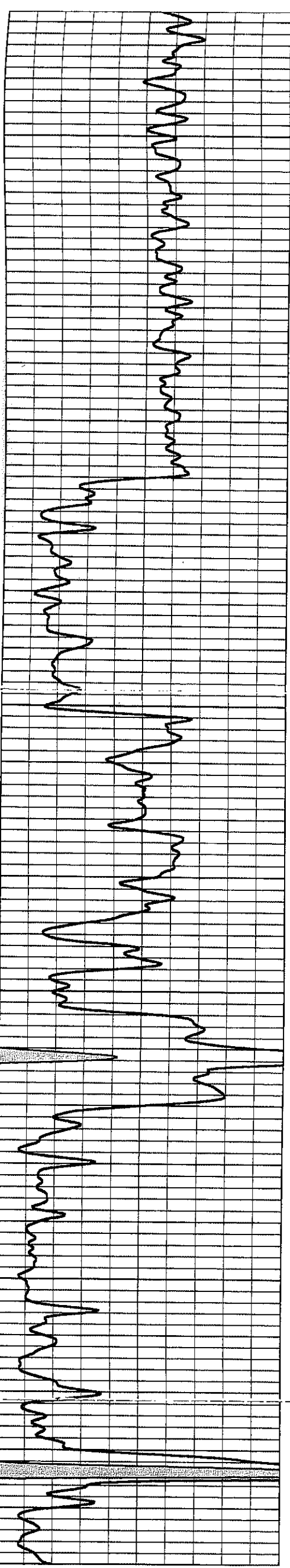
**Comments**

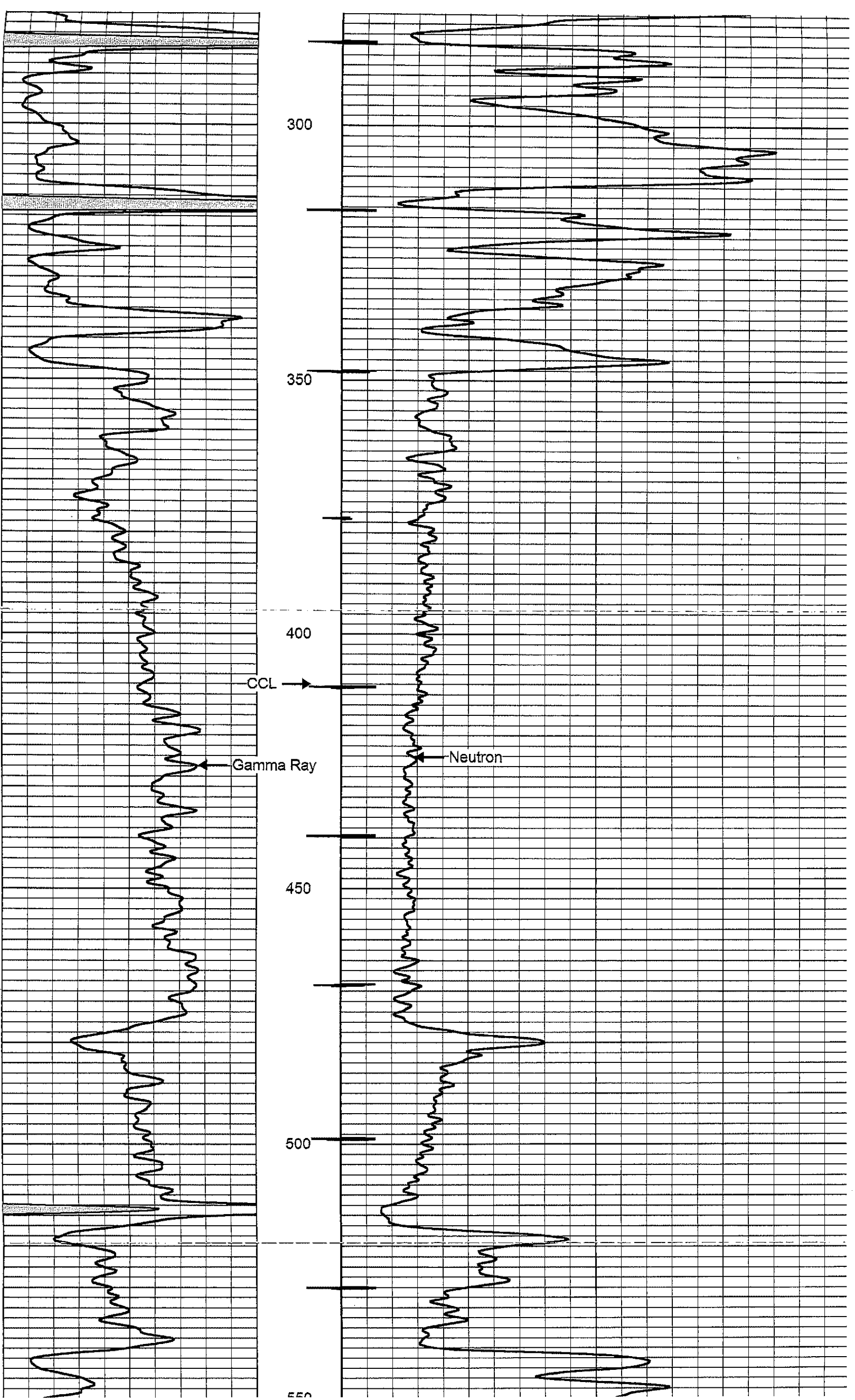
Drilling Contractor :  
 Town Oilfield Services, Inc.

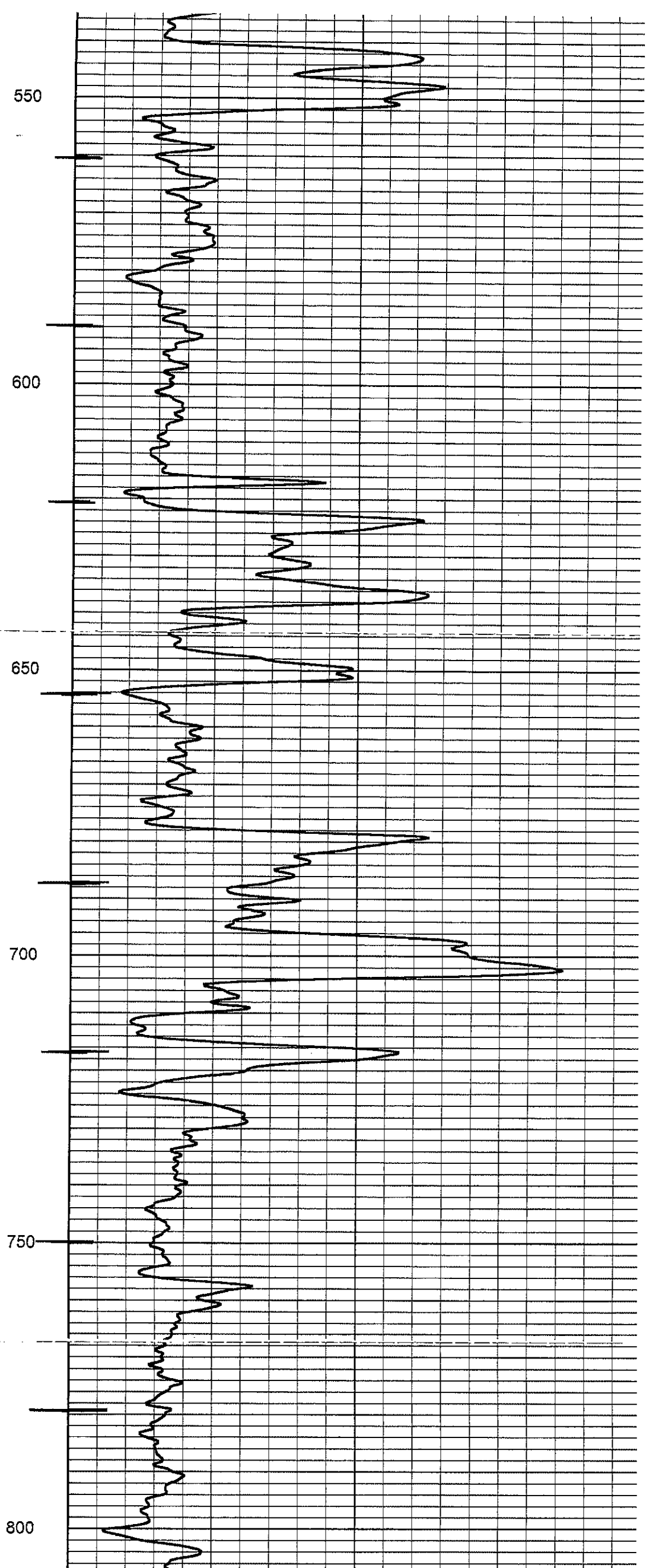
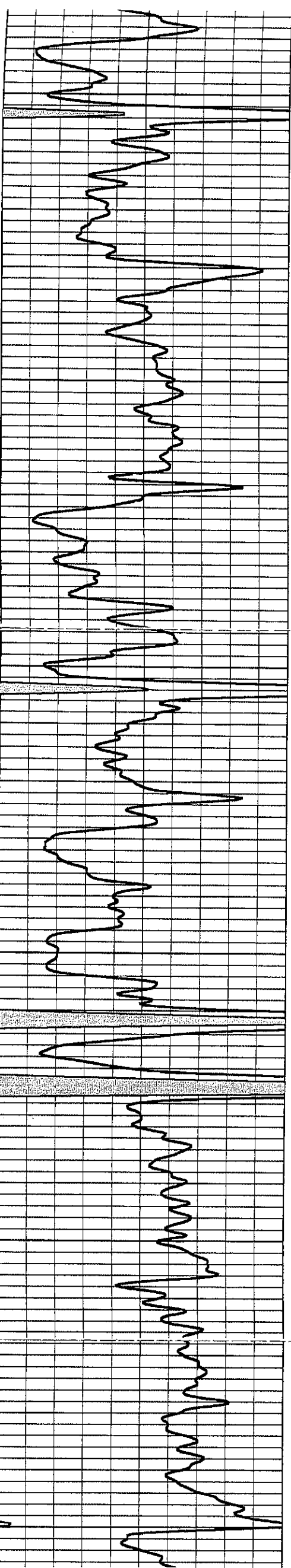
Database File: **miewes6hp.db**  
 Dataset Pathname: **pass1**  
 Presentation Format: **gr-n-ccl**  
 Dataset Creation: **Wed Jul 02 08:46:33 2014 by Log SCH 111116**  
 Charted by: **Depth in Feet scaled 1:240**

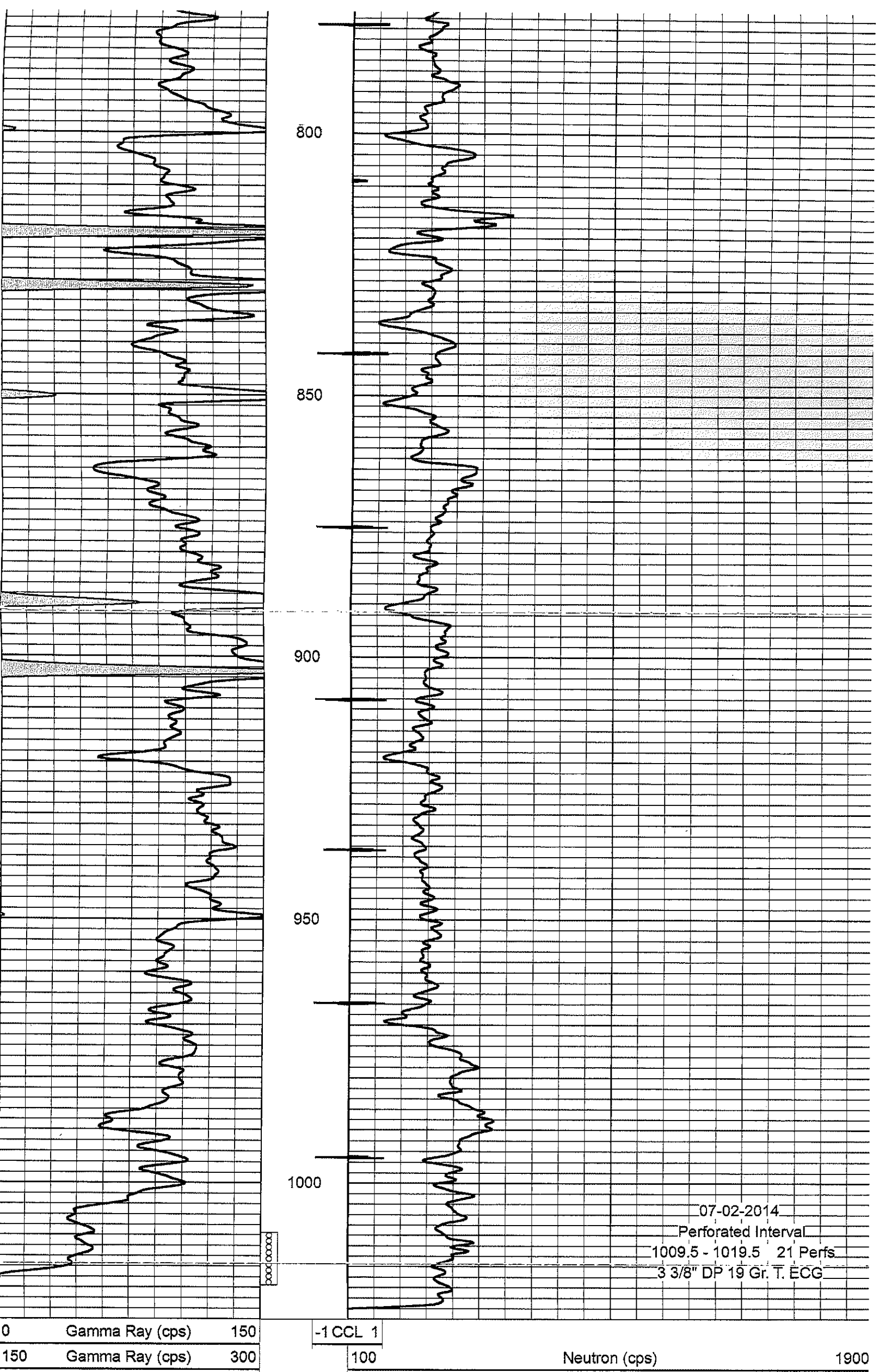
0	Gamma Ray (cps)	150	-1 CCL 1	100	Neutron (cps)	1900
150	Gamma Ray (cps)	300				











0 Gamma Ray (cps) 150  
 150 Gamma Ray (cps) 300

-1 CCL 1  
 100

Neutron (cps) 1900

07-02-2014  
 Perforated Interval  
 1009.5 - 1019.5 21 Perfs  
 3 3/8" DP 19 Gr. T. ECG