



MIDWEST SURVEYS
 LOGGING - PERFORATING - CONSULTING SERVICES
 P.O. Box 68, Osawatomie, KS 66064
 913 / 755 - 2128

GAMMA RAY / NEUTRON / CCL

File No. Company **Haas Petroleum, LLC.**

Well **Trester No. 4-HP**

Field **Iola**

County **Allen** State **Kansas**

Location **825 FNL & 3370' FEL**

NE-SW-NE-NW

Sec. 8 Twp. 24S Rge. 19E

Permian/Datum GL Elevation 1061'

Log Measured From GL K.B. NA

Drilling Measured From GL D.F. NA

Date 07-02-2014

Run Number One

Depth Miller 1028.0

Bottom Logger 1025.0

Bottom Logged Interval 1024.0

Top Log Interval 20.0

Fluid Level Full

Type Fluid Water

Density / Viscosity NA

Salinity - PPM Cl NA

Max Recorded Temp NA

Estimated Cement Top 0.0

Equipment No. Location 102 Osawatimie

Recorded By Gary Windisch

Witnessed By John Haas

BORE-HOLE RECORD				CASING RECORD			
Run	BIT	FROM	TO	SIZE	WGT	FROM	TO
One	12.25"	0.0	20.0	8.625"	24.0 #	0.0	20.0
Two	6.75"	20.0	1028.0	4.50"	10.5 #	0.0	1025.0

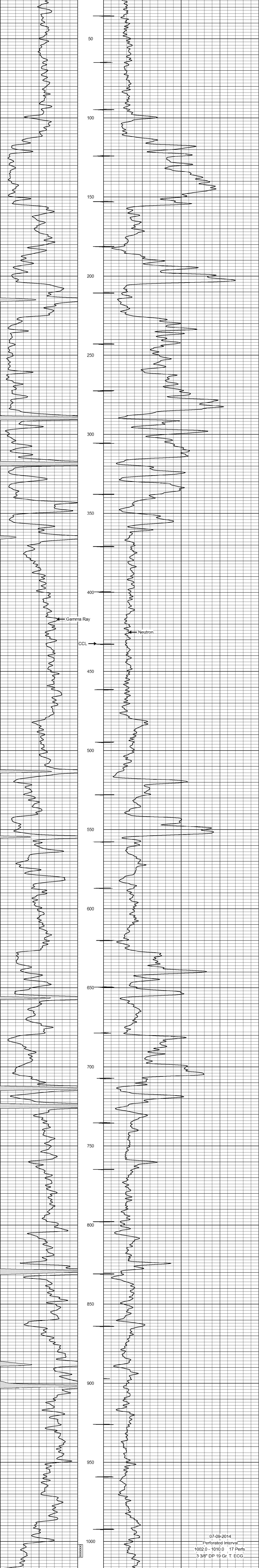
<<< Fold Here >>>

All interpretations are opinions based on inferences from electrical or other measurements and we cannot and do not guarantee the accuracy or correctness of any interpretation, and we shall not, except in the case of gross or willful negligence on our part, be liable or responsible for any loss, costs, damages, or expenses incurred or sustained by anyone resulting from any interpretation made by any of our officers, agents or employees. These interpretations are also subject to our general terms and conditions set out in our current Price Schedule.

Comments

Drilling Contractor :
 Town Oilfield Services, Inc.

Database File: trester4hp.db
 Dataset Pathname: pass1
 Presentation Format: gr-n-ccl
 Dataset Creation: Wed Jul 02 11:43:37 2014 by Log SCH 111116
 Charted by: Depth in Feet scaled 1:240



07-09-2014
 Perforated Interval
 1002.0 - 1010.0 17 Perfs
 3 3/8" DP 19 Gr. T. ECG