



**WIRELINE
SERVICES, INC.**
CHANUTE, KANSAS

**GAMMA RAY
NEUTRON
COMPLETION LOG**

Company **BULLDOG OIL COMPANY**
Well **JORDAN #7-R**
Field **HUMBOLDT-CHANUTE**
County **ALLEN**
State **KANSAS**

Company **BULLDOG OIL COMPANY**
Well **JORDAN #7-R**
Field **HUMBOLDT-CHANUTE**
County **ALLEN** State **KANSAS**

Location: **API # : 15-001-31120-00-00**
3135' FSL & 2970' FEL
N2 SE SE NW
SEC 29 TWP 26S RGE 20E

Permanent Datum	GL	Elevation	991' EST
Log Measured From	GL	K.B.	D.F.
Drilling Measured From	GL	G.L.	991' EST.

Date	8-14-14		
Run Number	1 NW		
Depth Driller	900'		
Depth Logger	877.1'		
Top Log Interval	0		
Bottom Logged Interval	877.1'		
Fluid Level	FULL		
Type Fluid	WATER		
Production Casing	2 7/8" @ TD	@	@
Max. Recorded Temp.			
Estimated Cement Top			
Calculated Cement Top			
Amount & Type Cement			
Amount & Type Admix			
Drilling Contractor			
Equipment Number	103		
Location			
Recorded By	SOLOMON, B.		
Witnessed By	BALLARD, D.		

<<< Fold Here >>>

All interpretations are opinions based on inferences from electrical or other measurements and we cannot and do not guarantee the accuracy or correctness of any interpretation, and we shall not, except in the case of gross or willful negligence on our part, be liable or responsible for any loss, costs, damages, or expenses incurred or sustained by anyone resulting from any interpretation made by any of our officers, agents or employees. These interpretations are also subject to our general terms and conditions set out in our current Price Schedule.

Comments

THANK YOU

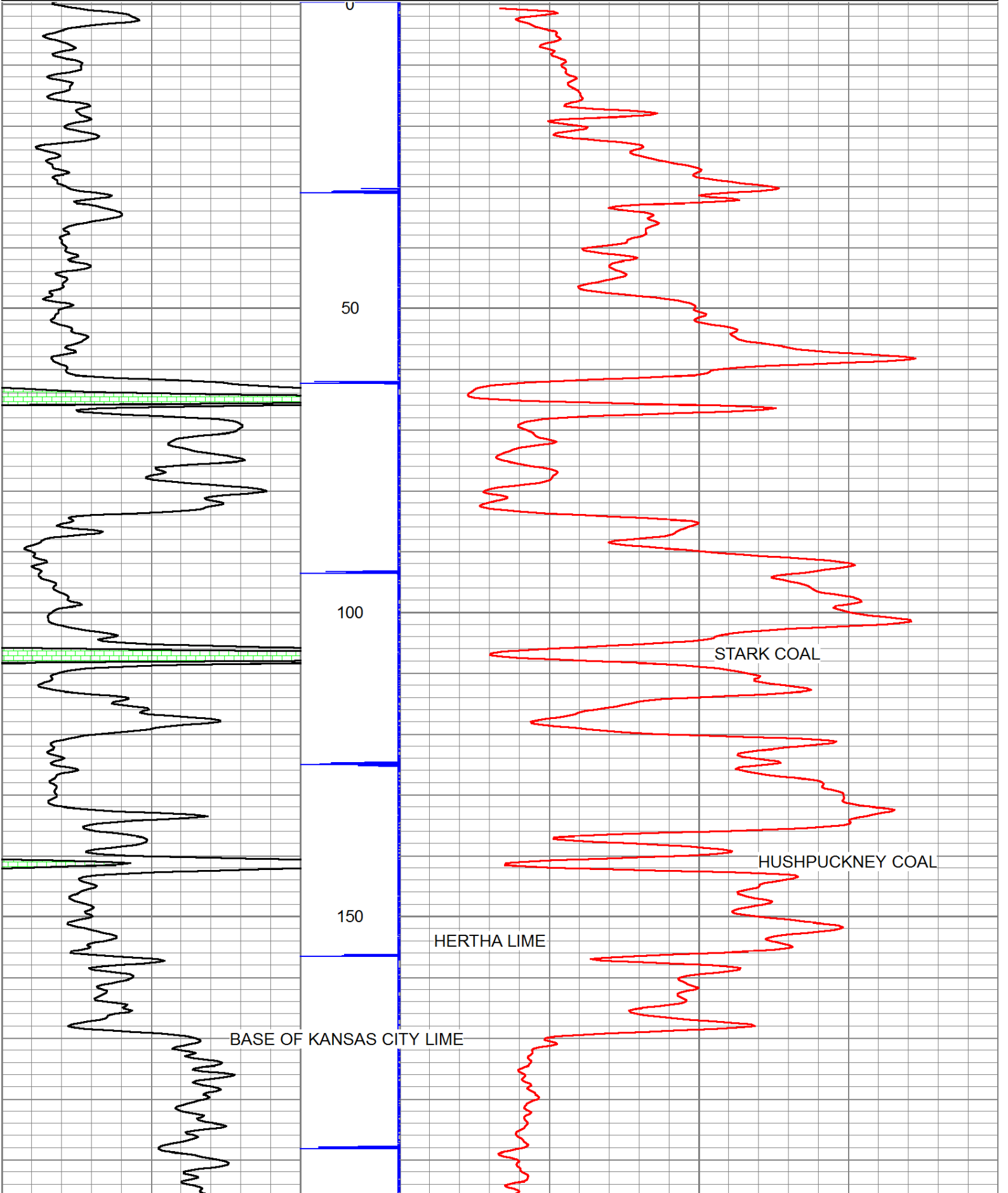
Sensor	Offset (ft)	Schematic	Description	Len (ft)	OD (in)	Wt (lb)

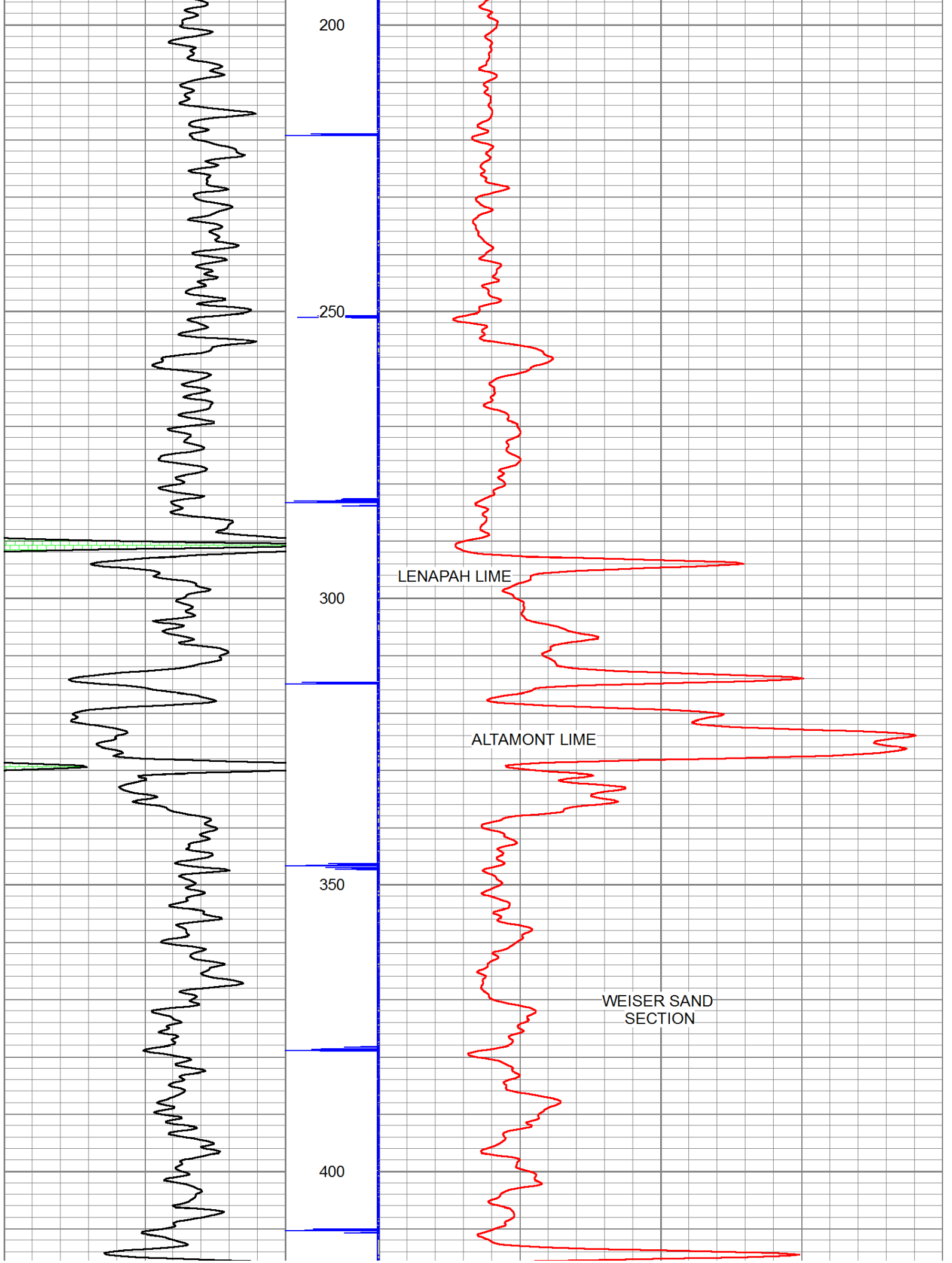
GR	7.59		GR-TITAN_169 (TIT169_001) Titan 1 11/16" Gamma Ray	4.75	1.69	20.00
CCL	5.05		CCL-TITAN_169 (TIT169) Titan 1 11/16" Logging CCL	1.83	1.69	7.50
NEU	0.63		NEU-TITAN (TIT801) TITAN 1 11/16" Neutron	4.33	1.69	25.00

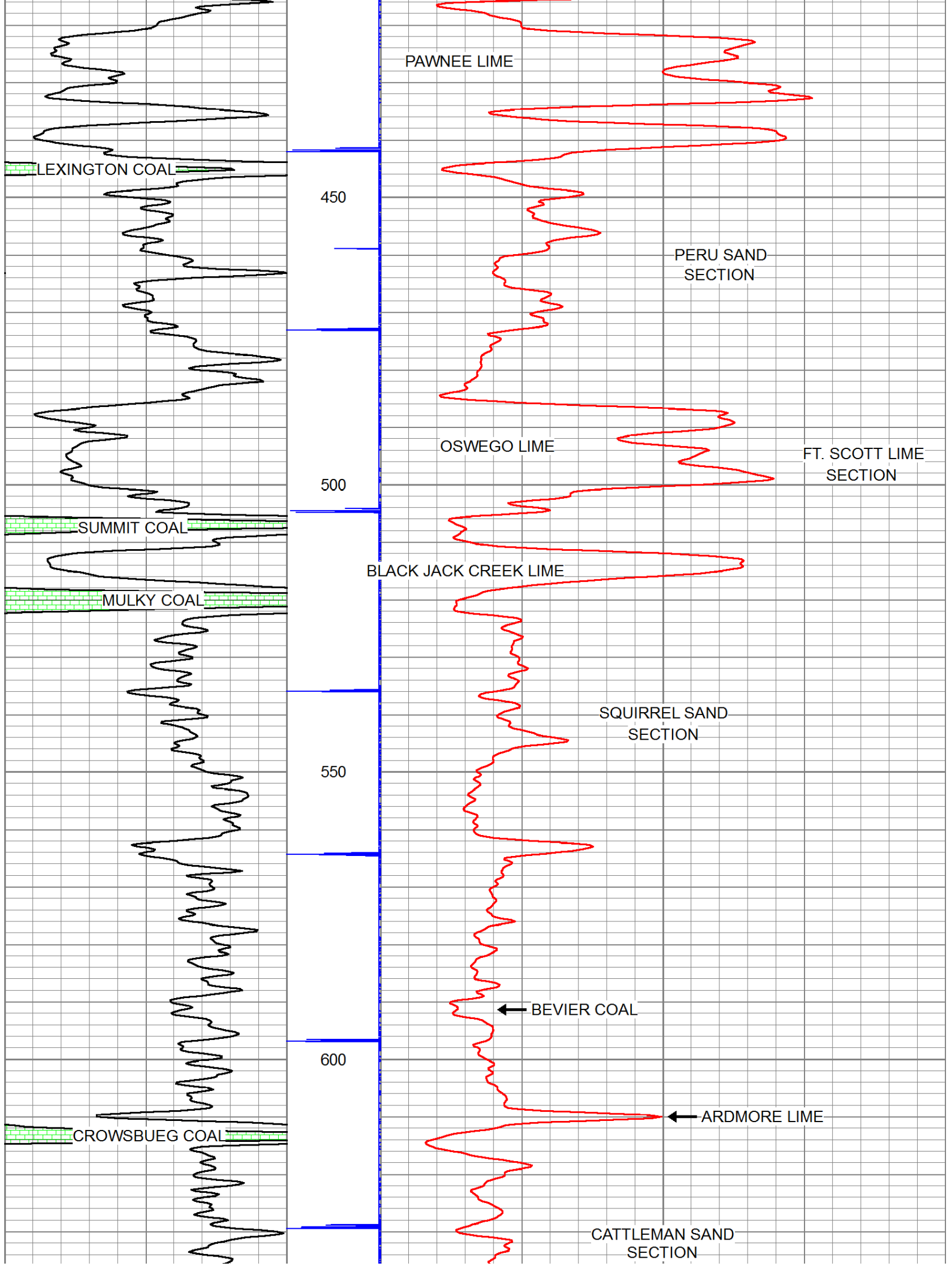
Dataset: jordan #7-r.db: field/well/run1/pass1
 Total Length: 10.92 ft
 Total Weight: 52.50 lb
 O.D.: 1.69 in

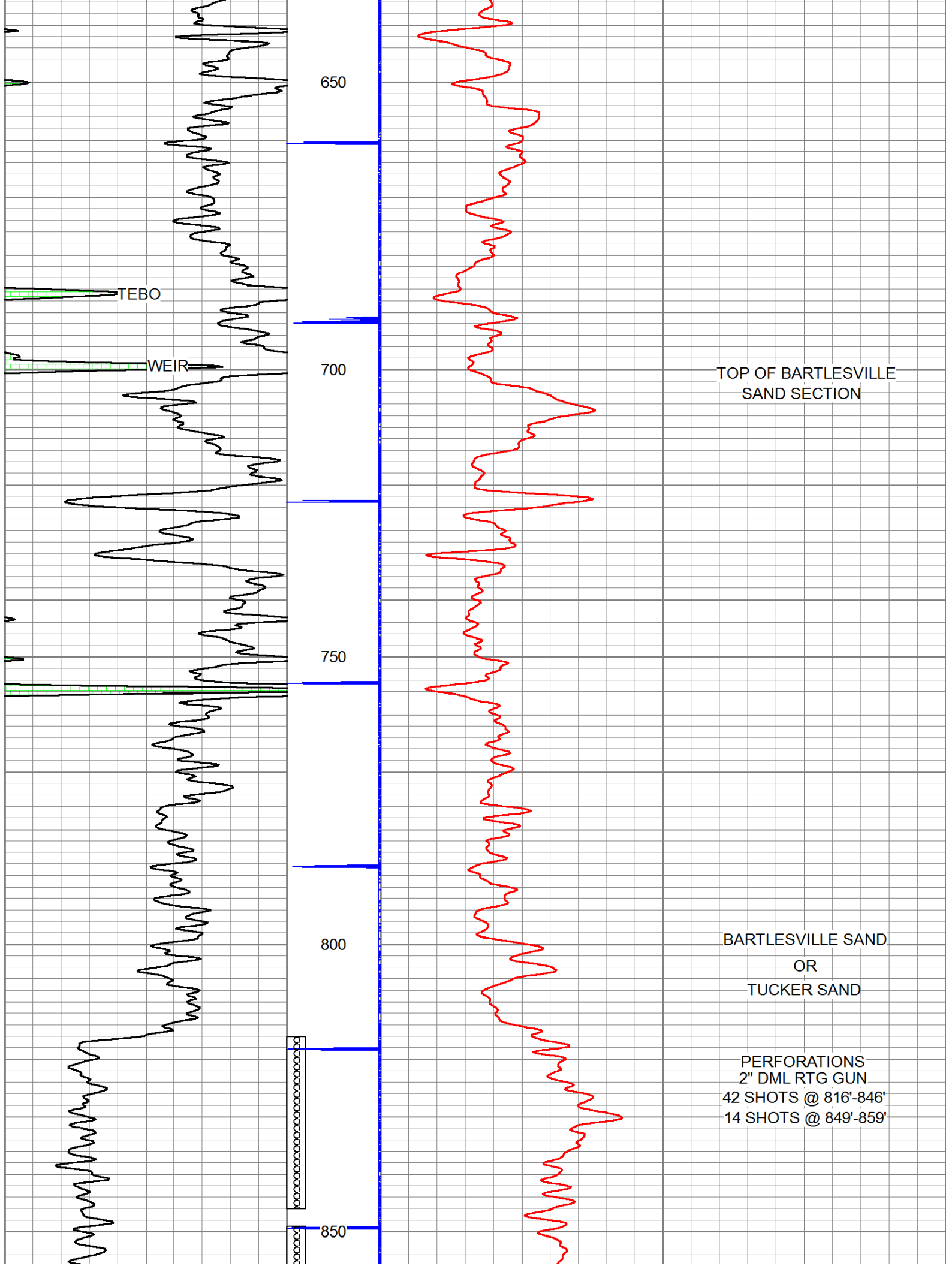
Database File: e:\jordan #7-r.db
 Dataset Pathname: pass1
 Presentation Format: gr-n-ccl

150	gr	300	3	CCLJ.05	100	NEU (cps)	1800
0	GR	150					









650

TEBO

WEIR

700

TOP OF BARTLESVILLE SAND SECTION

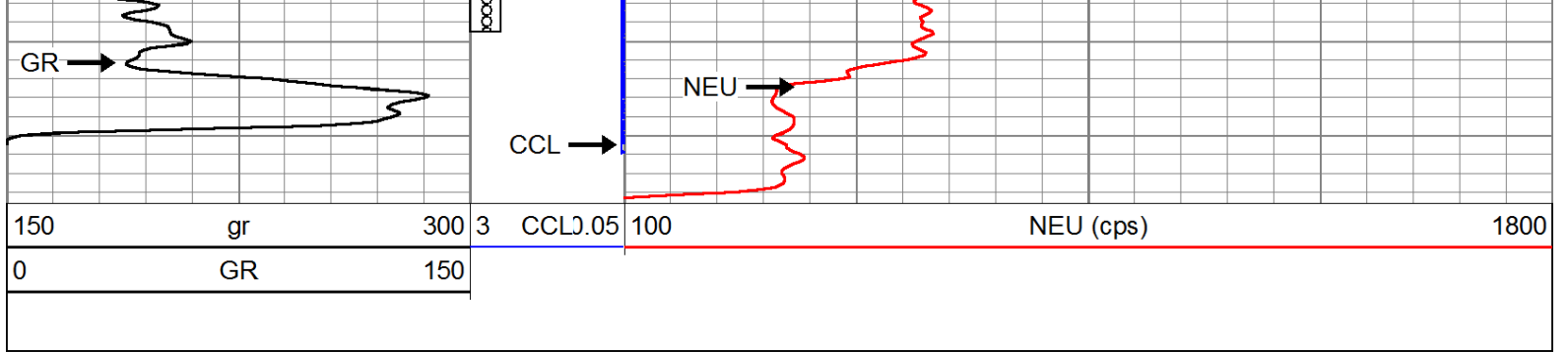
750

800

BARTLESVILLE SAND
OR
TUCKER SAND

850

PERFORATIONS
2" DML RTG GUN
42 SHOTS @ 816'-846'
14 SHOTS @ 849'-859'



Company	BULLDOG OIL COMPANY
Well	JORDAN #7-R
Field	HUMBOLDT-CHANUTE
County	ALLEN SEC. 29 TWP. 26S RGE. 20E
State	KANSAS
Date	8-14-14