



**GAMMA RAY  
NEUTRON  
COMPLETION LOG**

Company VERDE OIL COMPANY  
 Well CAMPBELL #I-11-11  
 Field HUMBOLDT - CHANUTE  
 County ALLEN  
 State KANSAS

Company VERDE OIL COMPANY  
 Well CAMPBELL #I-11-11  
 Field HUMBOLDT - CHANUTE  
 County ALLEN State KANSAS

Location: API # : 15-001-31161-00-00  
 165' FSL & 1155' FEL  
 SW SW SE SE  
 SEC 29 TWP 26S RGE 20E  
 Permanent Datum GL Elevation 1016' EST  
 Log Measured From GL  
 Drilling Measured From GL Elevation K.B. D.F. G.L. 1016' EST.

|                        |               |
|------------------------|---------------|
| Date                   | 10-31-14      |
| Run Number             | 1 NW          |
| Depth Driller          | 915'          |
| Depth Logger           | 886.9'        |
| Top Log Interval       | 0             |
| Bottom Logged Interval | 886.9'        |
| Fluid Level            | FULL          |
| Type Fluid             | WATER         |
| Production Casing      | 2 7/8" @ TD @ |
| Max. Recorded Temp.    |               |
| Estimated Cement Top   |               |
| Calculated Cement Top  |               |
| Amount & Type Cement   |               |
| Amount & Type Admix    |               |
| Drilling Contractor    |               |
| Equipment Number       | 103           |
| Location               |               |
| Recorded By            | SOLOMON, B.   |
| Witnessed By           | DALE, J.      |

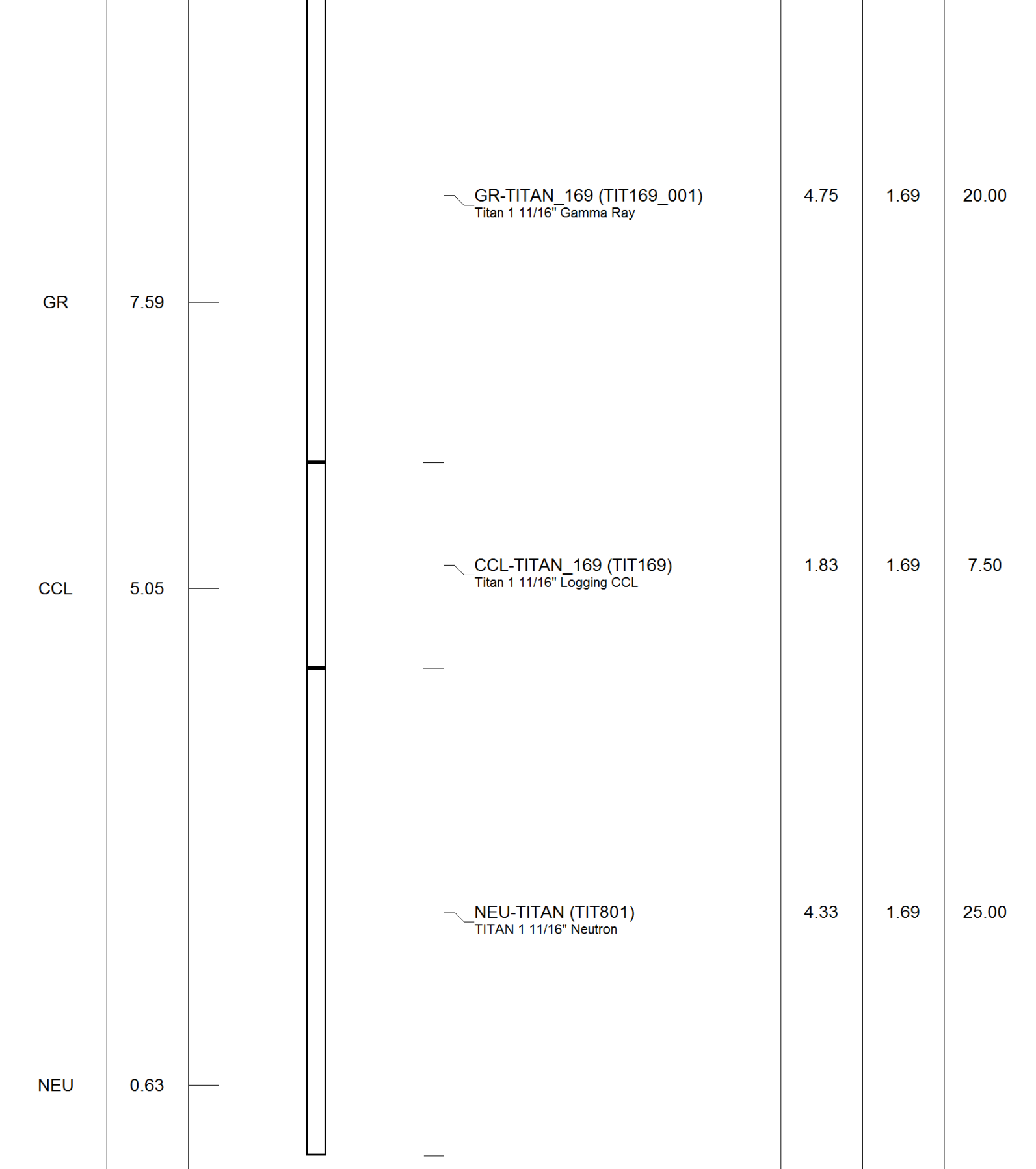
<<< Fold Here >>>

All interpretations are opinions based on inferences from electrical or other measurements and we cannot and do not guarantee the accuracy or correctness of any interpretation, and we shall not, except in the case of gross or willful negligence on our part, be liable or responsible for any loss, costs, damages, or expenses incurred or sustained by anyone resulting from any interpretation made by any of our officers, agents or employees. These interpretations are also subject to our general terms and conditions set out in our current Price Schedule.

Comments

THANK YOU.

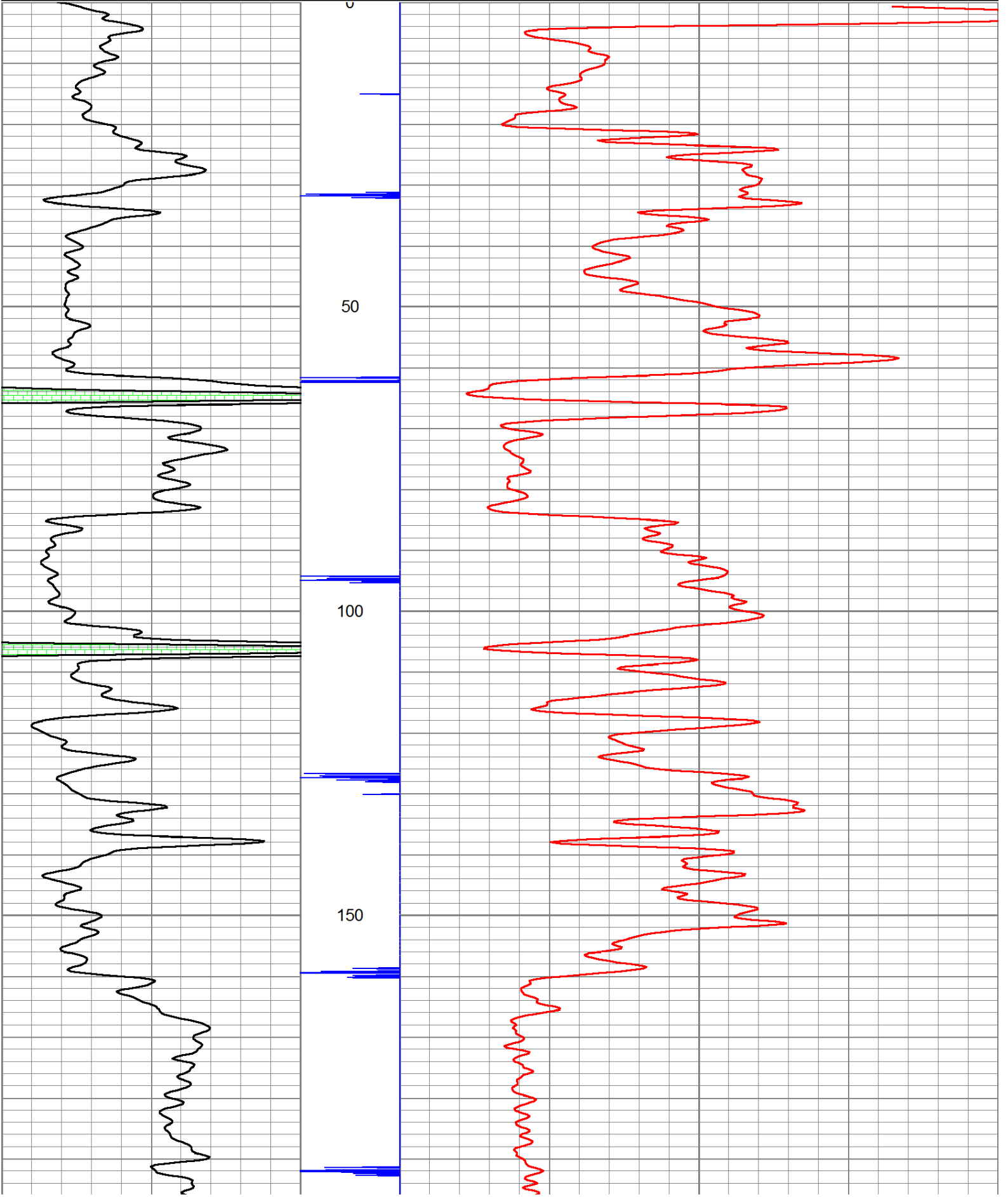
| Sensor | Offset (ft) | Schematic | Description | Len (ft) | OD (in) | Wt (lb) |
|--------|-------------|-----------|-------------|----------|---------|---------|
|        |             |           |             |          |         |         |

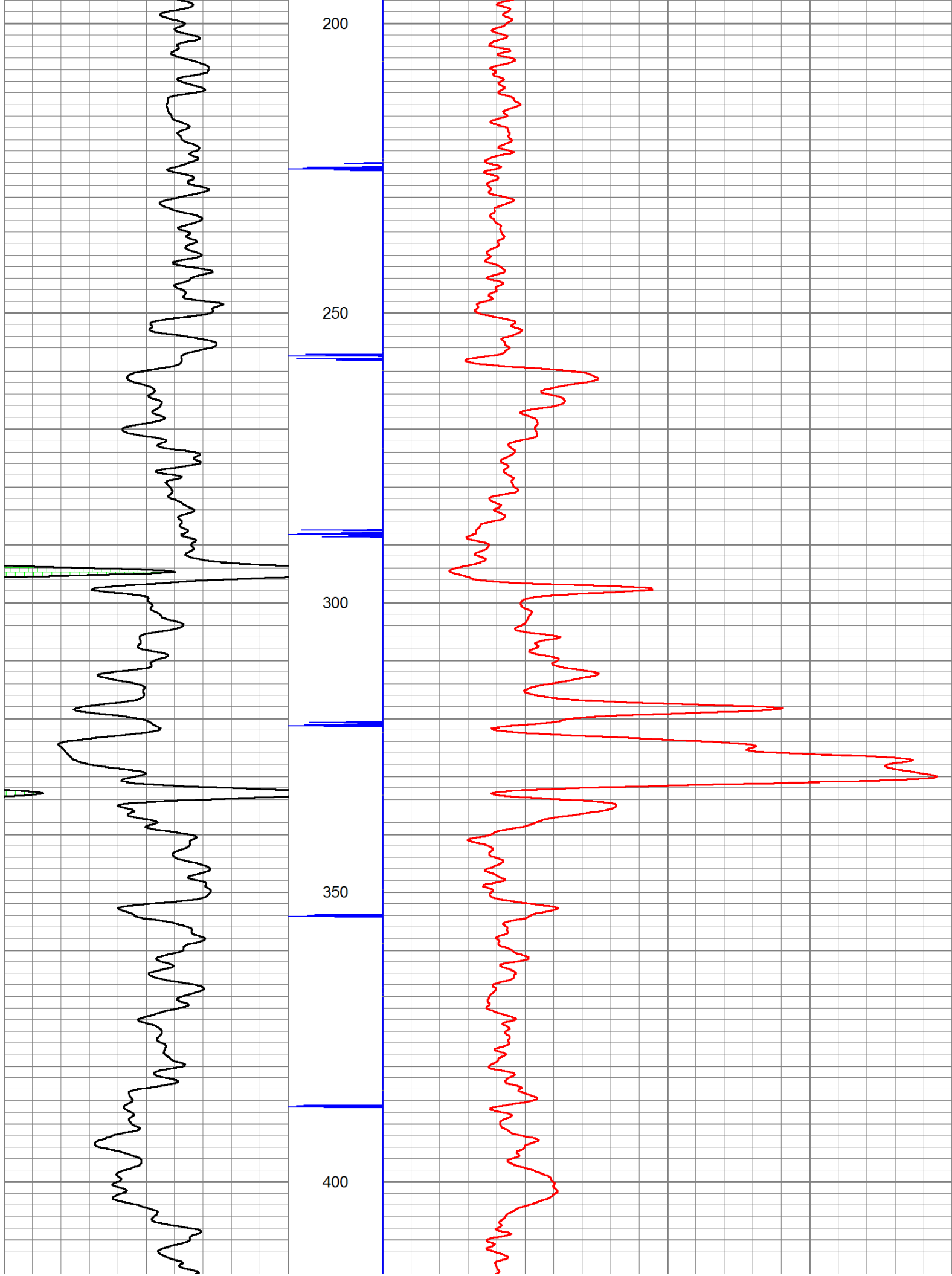


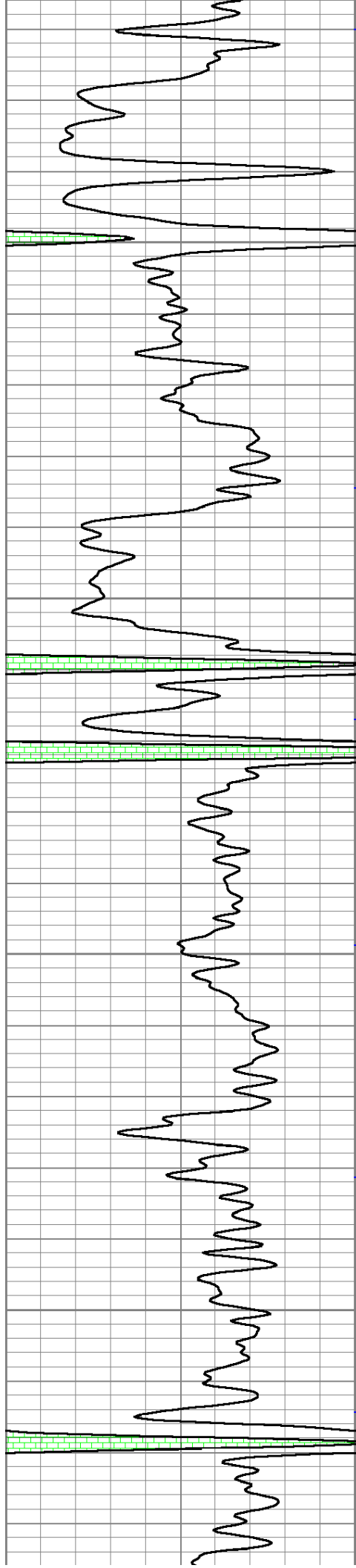
Dataset: campbell #-11-11.db: field/well/run1/pass1  
 Total Length: 10.92 ft  
 Total Weight: 52.50 lb  
 O.D.: 1.69 in

Database File: e:\campbell #-11-11.db  
 Dataset Pathname: pass1  
 Presentation Format: gr-n-ccl

|     |    |     |   |     |   |     |           |      |
|-----|----|-----|---|-----|---|-----|-----------|------|
| 150 | gr | 300 | 3 | CCL | 0 | 100 | NEU (cps) | 1700 |
| 0   | GR | 150 |   |     |   |     |           |      |







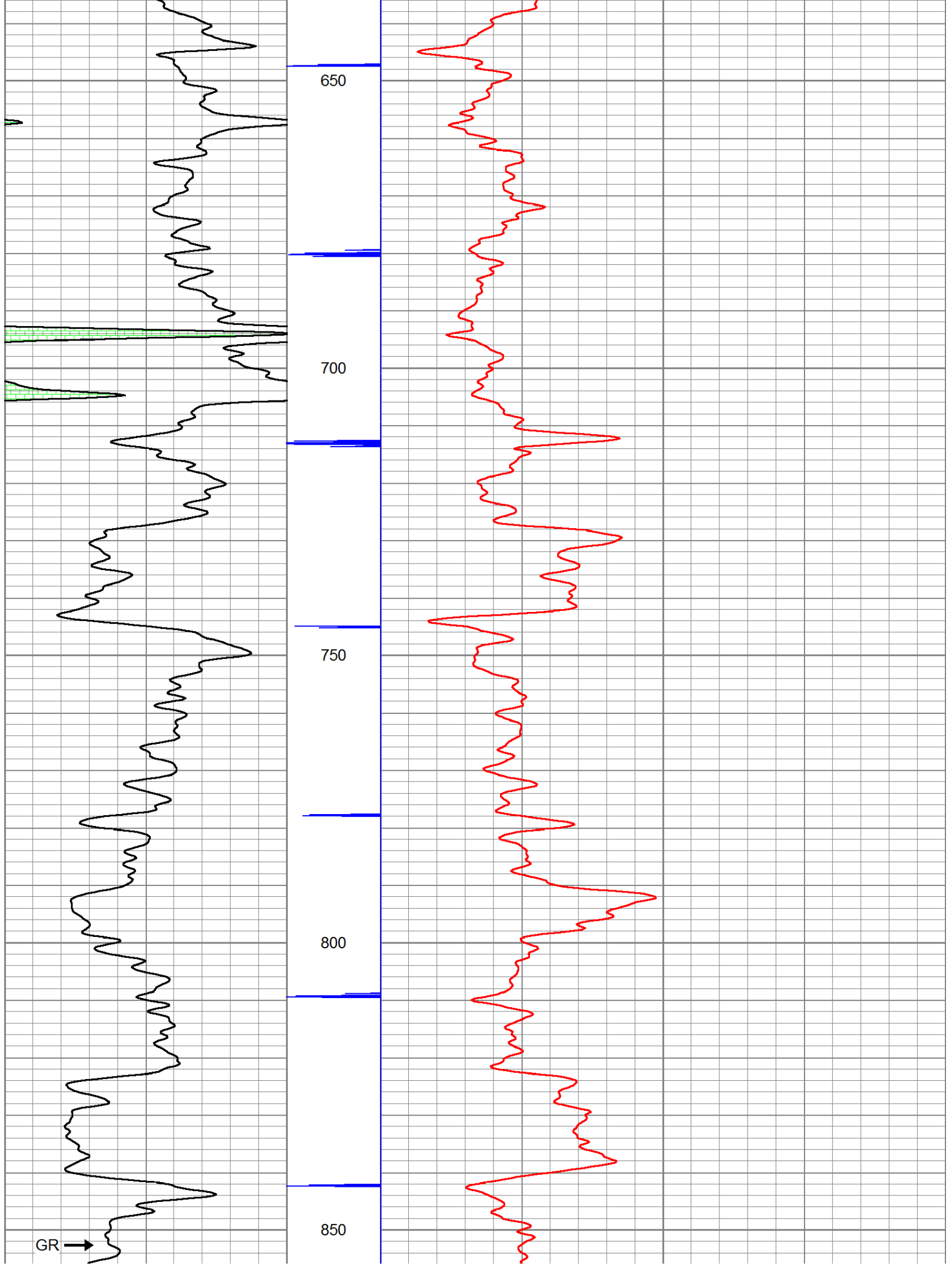
450

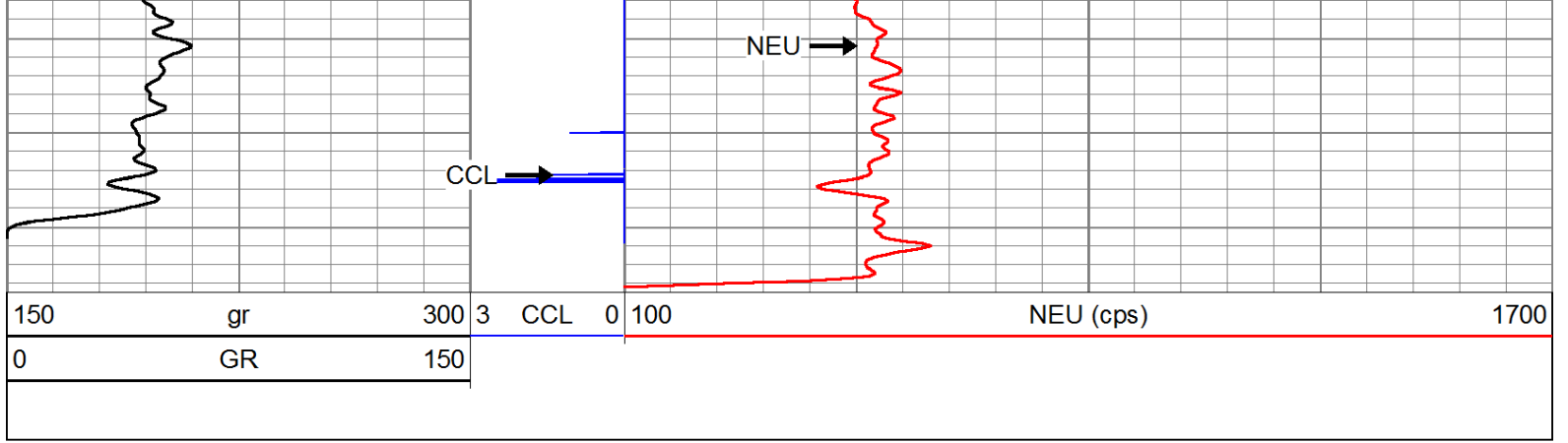
500

550

600







Company VERDE OIL COMPANY  
 Well CAMPBELL #I-11-11  
 Field HUMBOLDT - CHANUTE  
 County SEC. 29 TWP. 26S RGE. 20E  
 State KANSAS Date 10-31-14