



**GAMMA RAY  
NEUTRON  
COMPLETION LOG**

Company VERDE OIL COMPANY  
 Well CAMPBELL #11-12  
 Field HUMBOLDT - CHANUTE  
 County ALLEN  
 State KANSAS

Company VERDE OIL COMPANY  
 Well CAMPBELL #11-12  
 Field HUMBOLDT - CHANUTE  
 County ALLEN State KANSAS

Location: API # : 15-001-31162-00-00 Other Services  
 165' FSL & 825' FEL  
 SE SW SE SE  
 SEC 29 TWP 26S RGE 20E  
 Permanent Datum GL Elevation 1016EST  
 Log Measured From GL K.B.  
 Drilling Measured From GL D.F.  
 G.L. 1016EST.

Date	10-31-14		
Run Number	1 NW		
Depth Driller	915'		
Depth Logger	885.3'		
Top Log Interval	0		
Bottom Logged Interval	885.3'		
Fluid Level	FULL		
Type Fluid	WATER		
Production Casing	2 7/8" @ TD	@	@
Max. Recorded Temp.			
Estimated Cement Top			
Calculated Cement Top			
Amount & Type Cement			
Amount & Type Admix			
Drilling Contractor			
Equipment Number	103		
Location			
Recorded By	SOLOMON, B.		
Witnessed By	DALE, J.		

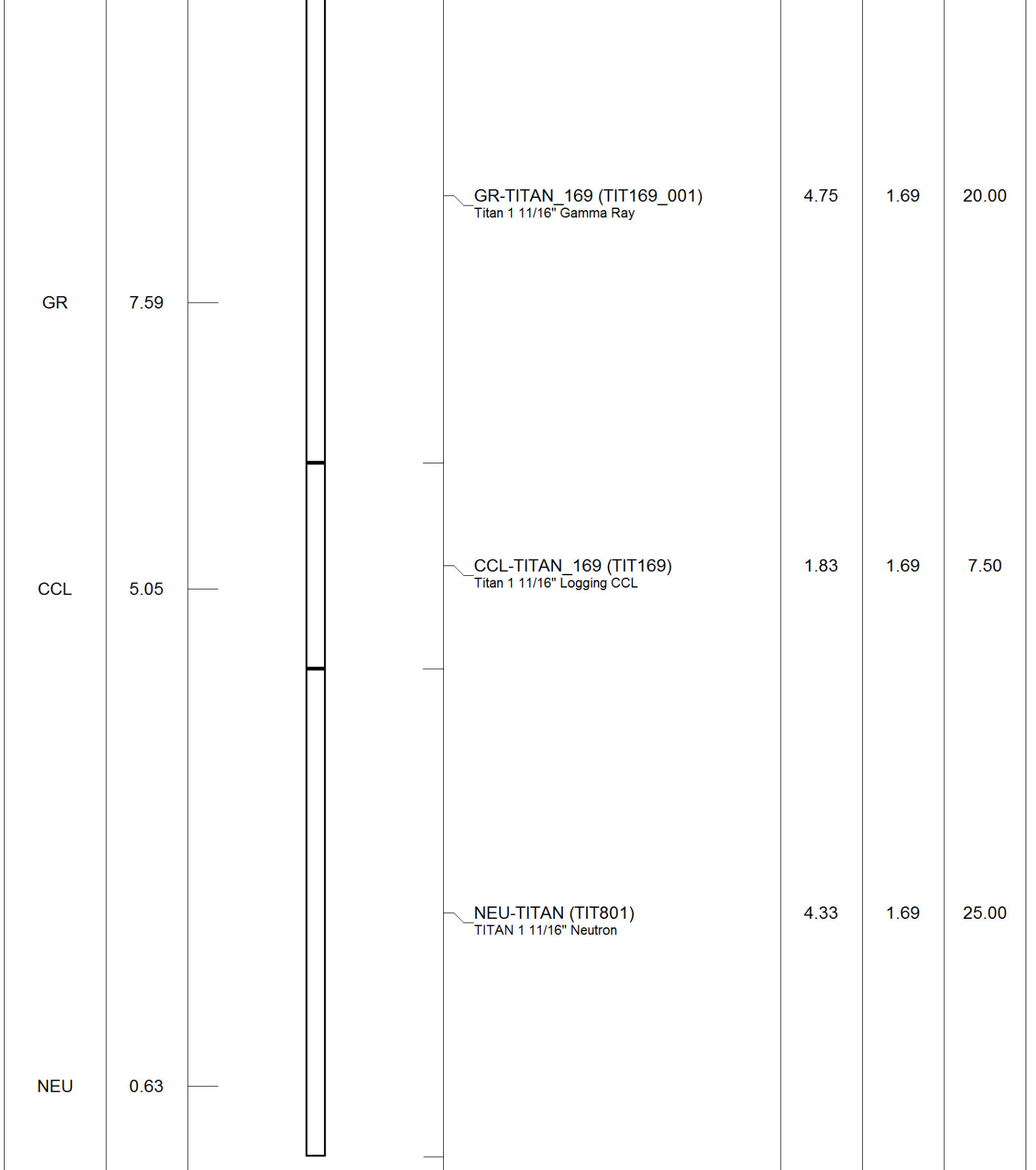
<<< Fold Here >>>

All interpretations are opinions based on inferences from electrical or other measurements and we cannot and do not guarantee the accuracy or correctness of any interpretation, and we shall not, except in the case of gross or willful negligence on our part, be liable or responsible for any loss, costs, damages, or expenses incurred or sustained by anyone resulting from any interpretation made by any of our officers, agents or employees. These interpretations are also subject to our general terms and conditions set out in our current Price Schedule.

Comments

THANK YOU.

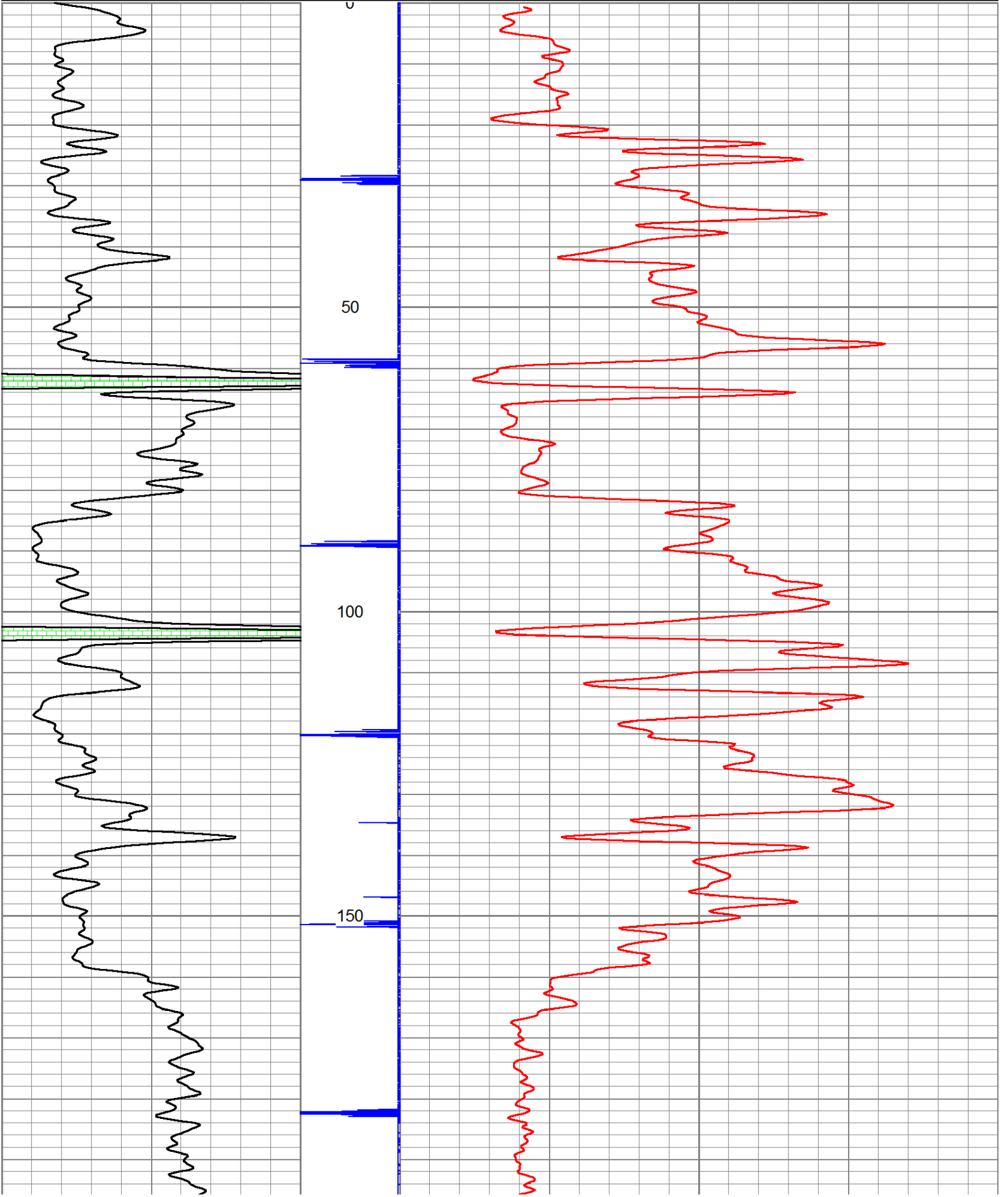
Sensor	Offset (ft)	Schematic	Description	Len (ft)	OD (in)	Wt (lb)

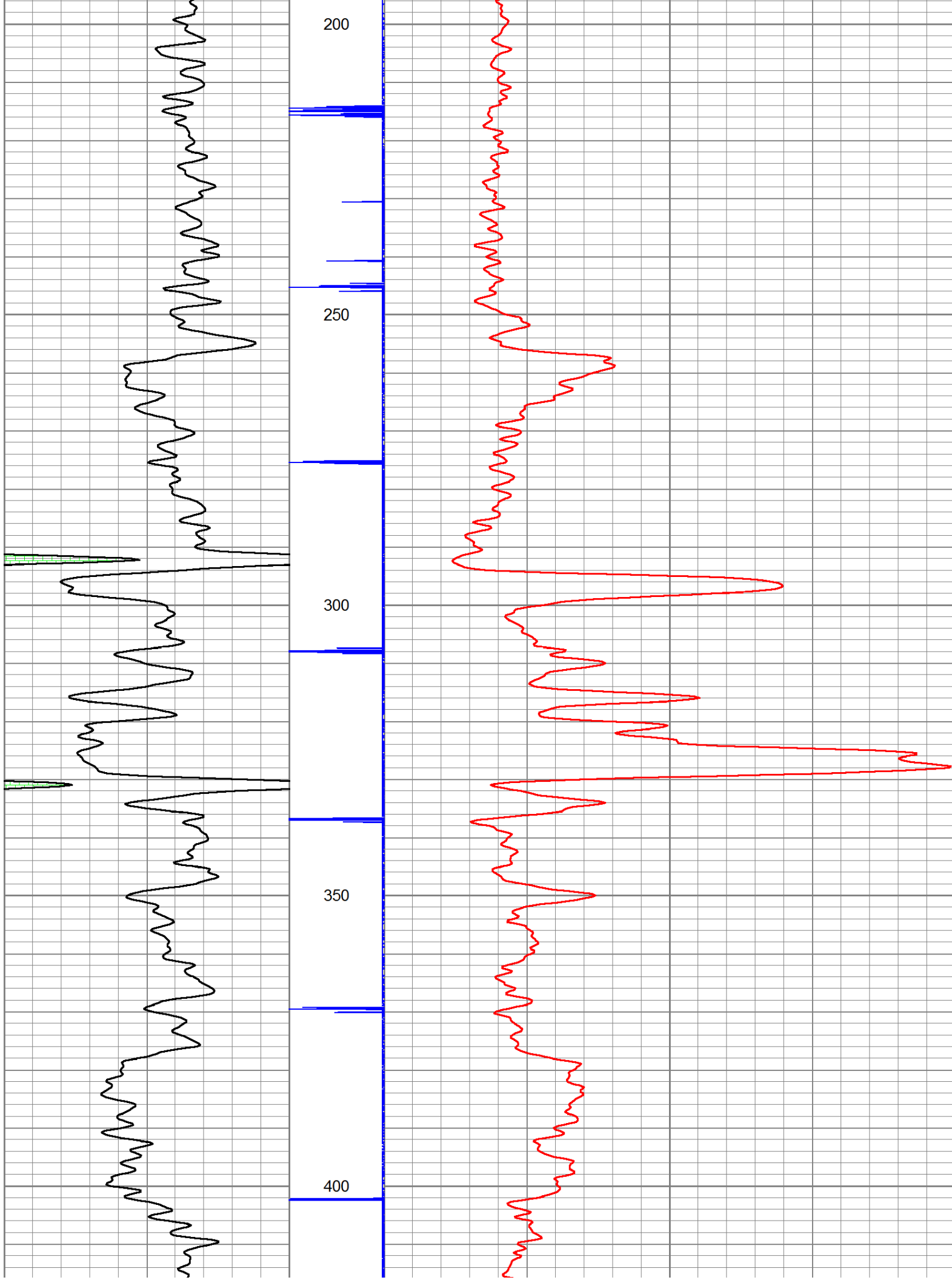


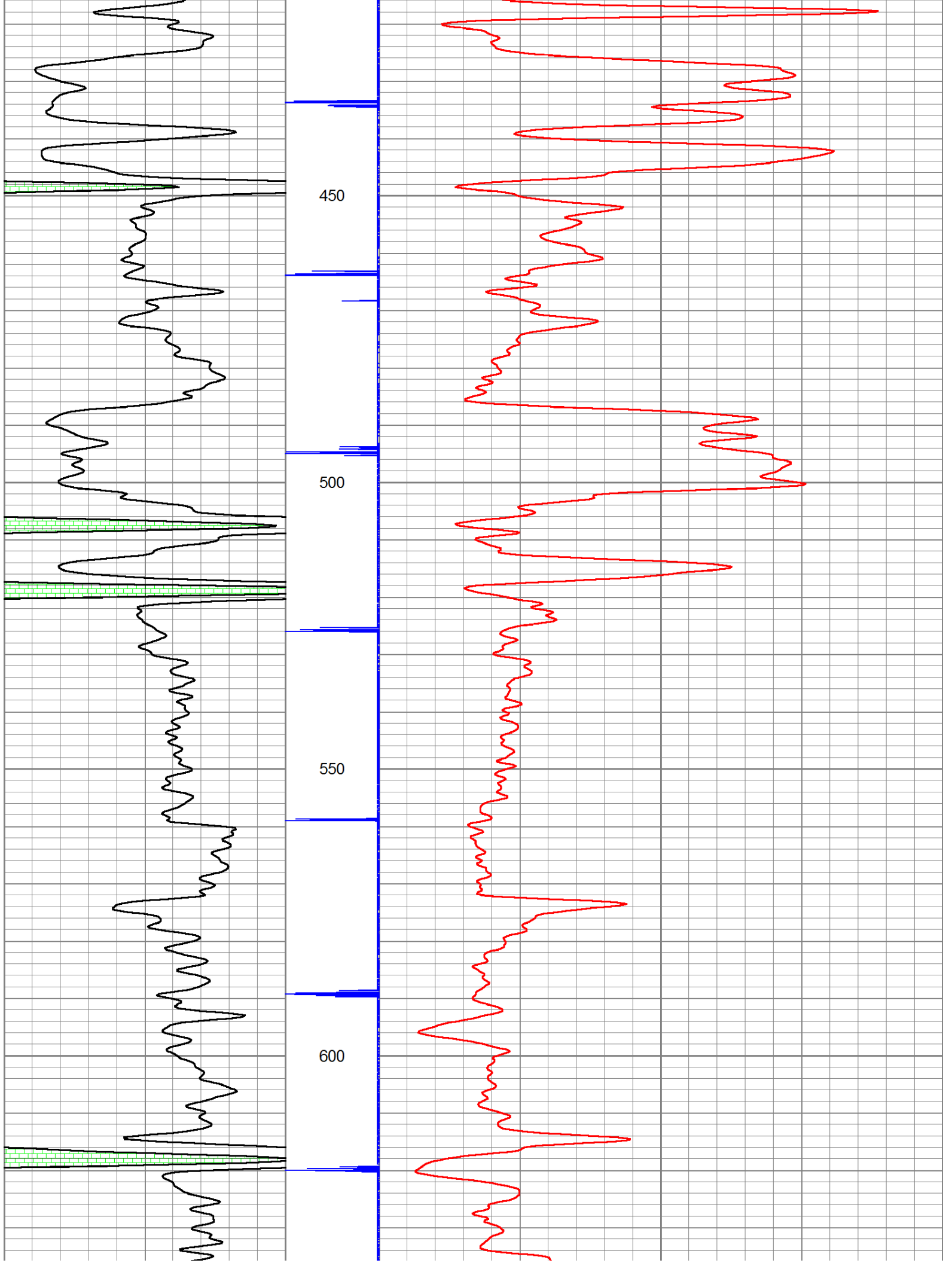
Dataset: campbell #11-12.db: field/well/run1/pass1  
 Total Length: 10.92 ft  
 Total Weight: 52.50 lb  
 O.D.: 1.69 in

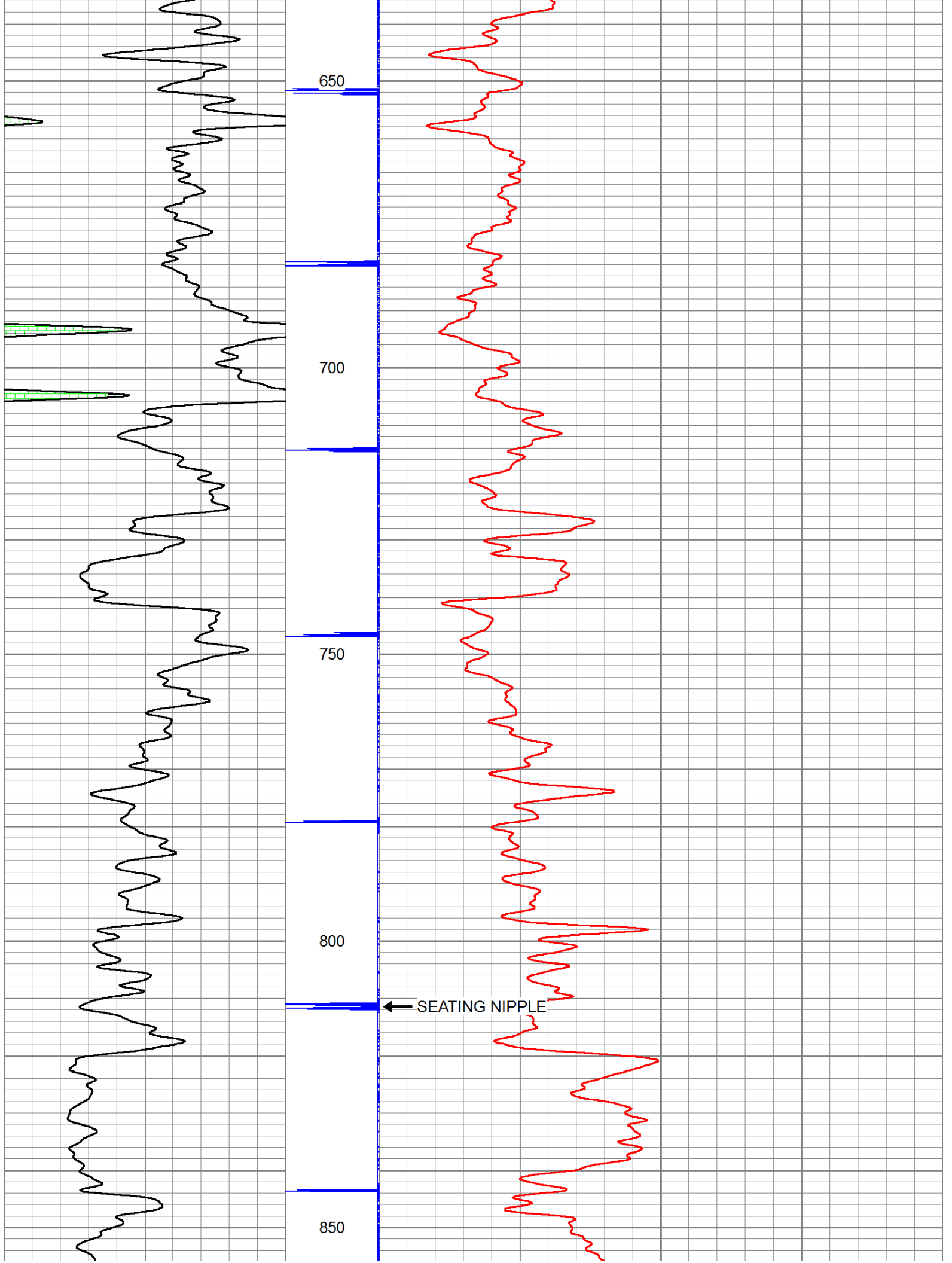
Database File: e:\campbell #11-12.db  
 Dataset Pathname: pass1  
 Presentation Format: gr-n-ccl

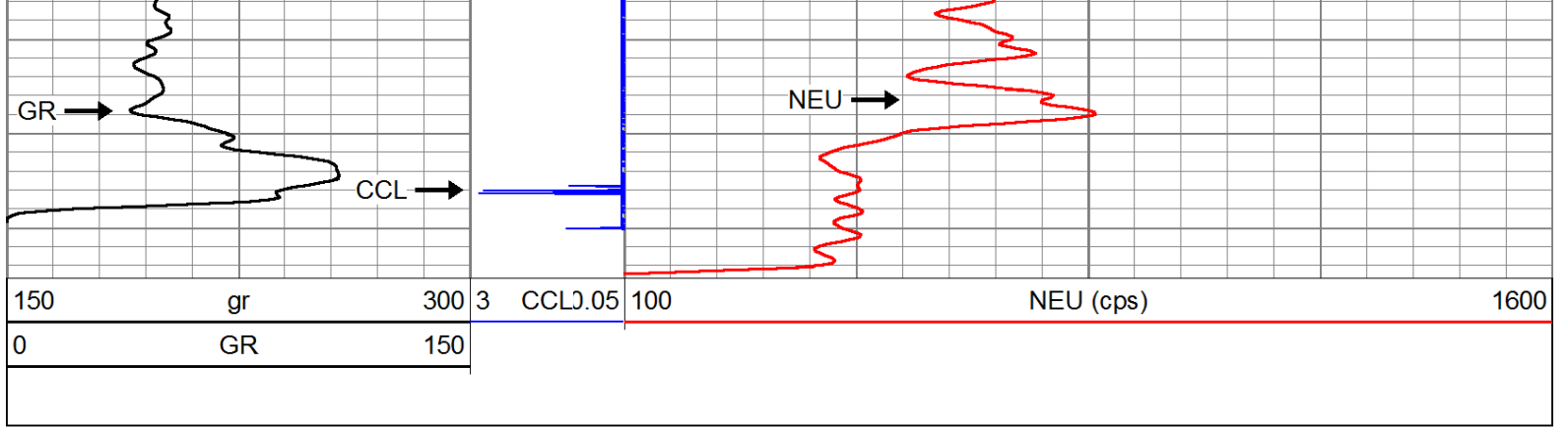
150	gr	300	3	CCLJ.05	100	NEU (cps)	1600
0	GR	150					











Company	VERDE OIL COMPANY
Well	CAMPBELL #11-12
Field	HUMBOLDT - CHANUTE
County	ALLEN SEC. 29 TWP. 26S RGE. 20E
State	KANSAS
Date	10-31-14