



**GAMMA RAY  
NEUTRON  
COMPLETION LOG**

Company VERDE OIL COMPANY  
 Well CAMPBELL #1-95-65  
 Field HUMBOLDT - CHANUTE  
 County ALLEN  
 State KANSAS

Company VERDE OIL COMPANY  
 Well CAMPBELL #1-95-65  
 Field HUMBOLDT - CHANUTE  
 County ALLEN State KANSAS

Location: API # : 15-001-31143-00-00  
 660' FSL & 2640' FEL  
 S/2 S/2  
 SEC 29 TWP 26S RGE 20E  
 Permanent Datum GL Elevation 992EST.  
 Log Measured From GL K.B.  
 Drilling Measured From GL D.F.  
 G.L. 992EST.  
 Elevation

Date	9-22-14
Run Number	1 NW
Depth Driller	915'
Depth Logger	871.9'
Top Log Interval	0
Bottom Logged Interval	871.9'
Fluid Level	FULL
Type Fluid	WATER
Production Casing	2 7/8" @ TD @
Max. Recorded Temp.	
Estimated Cement Top	
Calculated Cement Top	
Amount & Type Cement	
Amount & Type Admix	
Drilling Contractor	
Equipment Number	103
Location	
Recorded By	SOLOMON, B.
Witnessed By	DALE, J.

<<< Fold Here >>>

All interpretations are opinions based on inferences from electrical or other measurements and we cannot and do not guarantee the accuracy or correctness of any interpretation, and we shall not, except in the case of gross or willful negligence on our part, be liable or responsible for any loss, costs, damages, or expenses incurred or sustained by anyone resulting from any interpretation made by any of our officers, agents or employees. These interpretations are also subject to our general terms and conditions set out in our current Price Schedule.

Comments

THANK YOU

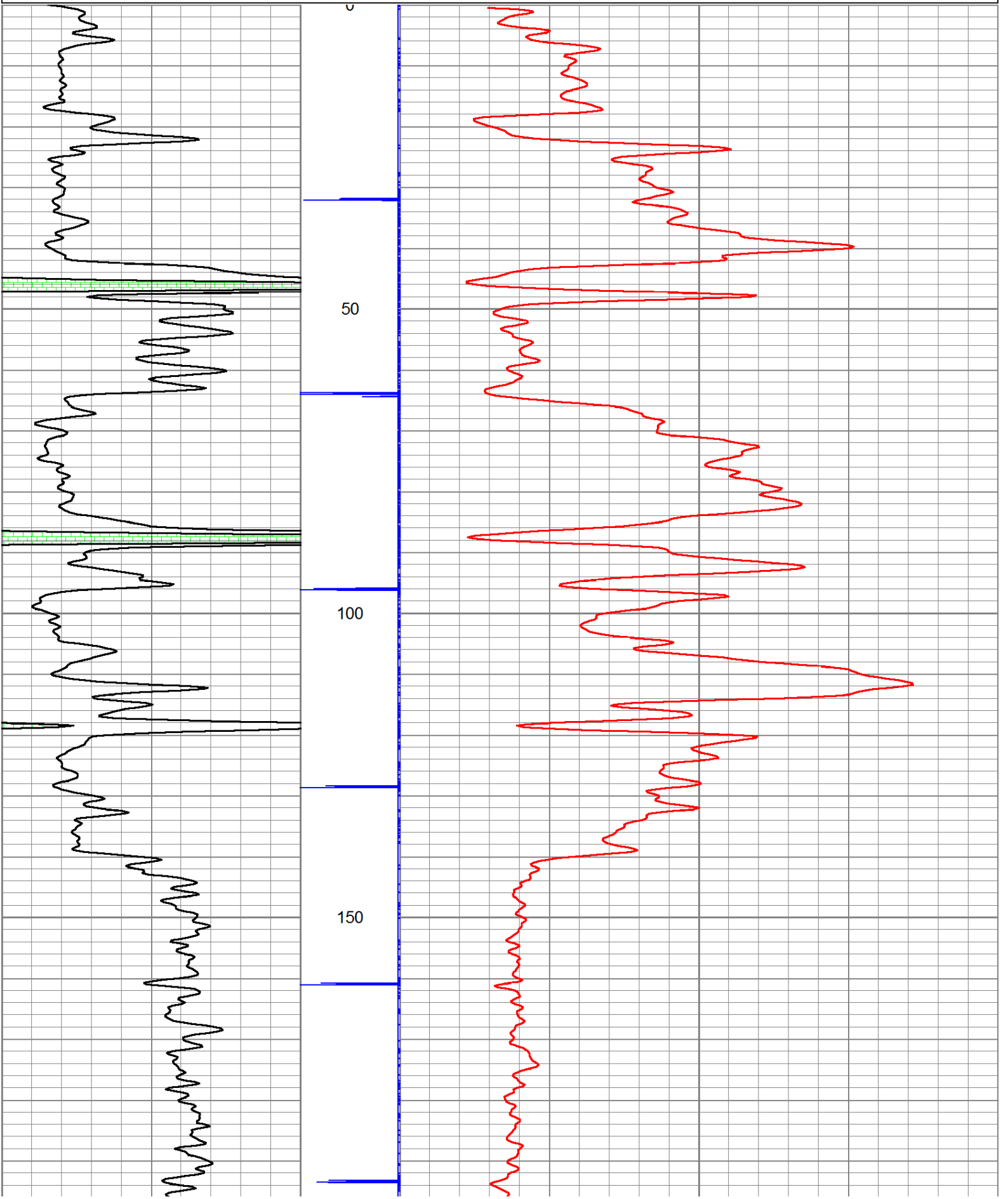
Sensor	Offset (ft)	Schematic	Description	Len (ft)	OD (in)	Wt (lb)

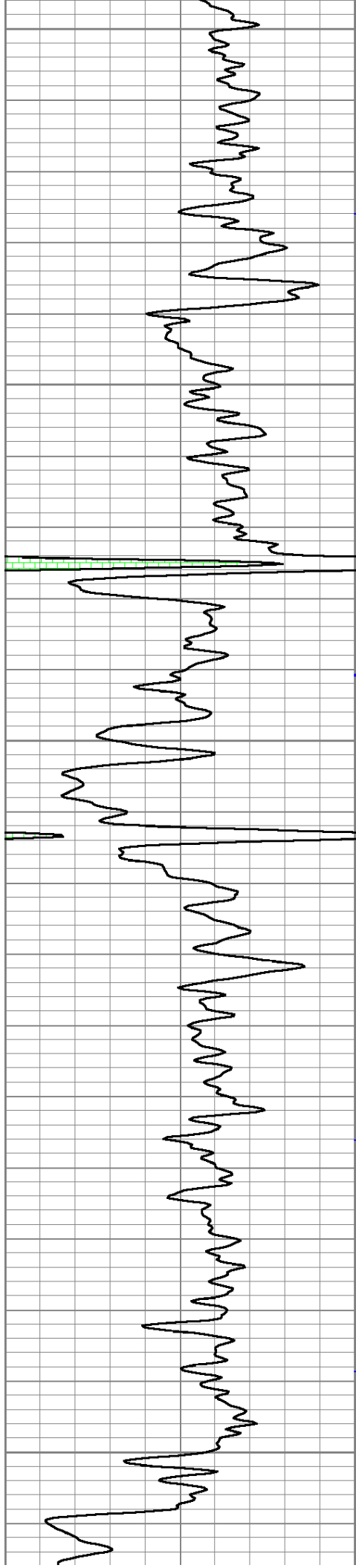
GR	7.59	GR-TITAN_169 (TIT169_001) Titan 1 11/16" Gamma Ray	4.75	1.69	20.00
CCL	5.05	CCL-TITAN_169 (TIT169) Titan 1 11/16" Logging CCL	1.83	1.69	7.50
NEU	0.63	NEU-TITAN (TIT801) TITAN 1 11/16" Neutron	4.33	1.69	25.00

Dataset: campbell #-95-65.db: field/well/run1/pass1  
 Total Length: 10.92 ft  
 Total Weight: 52.50 lb  
 O.D.: 1.69 in

Database File: p:\logs\verde oil company\campbell #-95-65\campbell #-95-65.db  
 Dataset Pathname: pass1  
 Presentation Format: gr-n-ccl

150	gr	300	3	CCLJ.05	100	NEU (cps)	1700
0	GR	150					





200

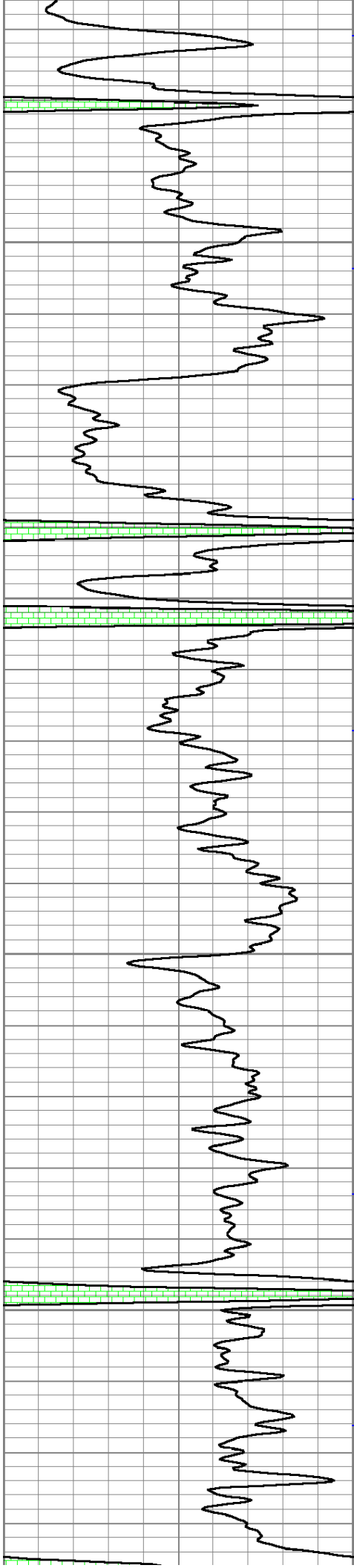
250

300

350

400



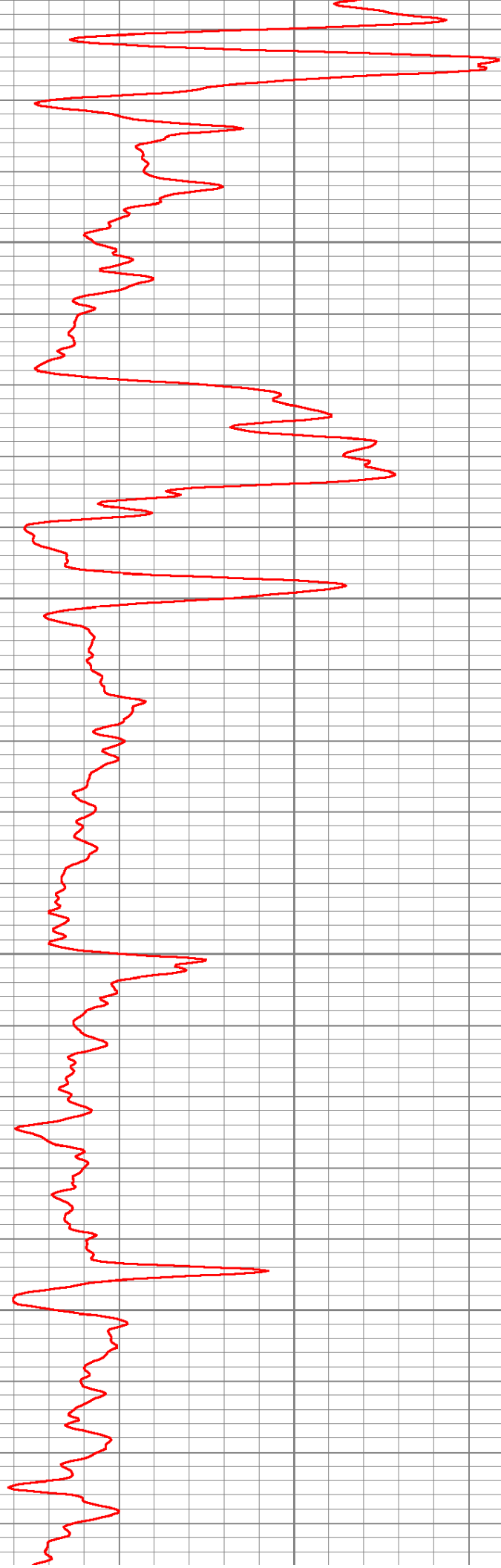


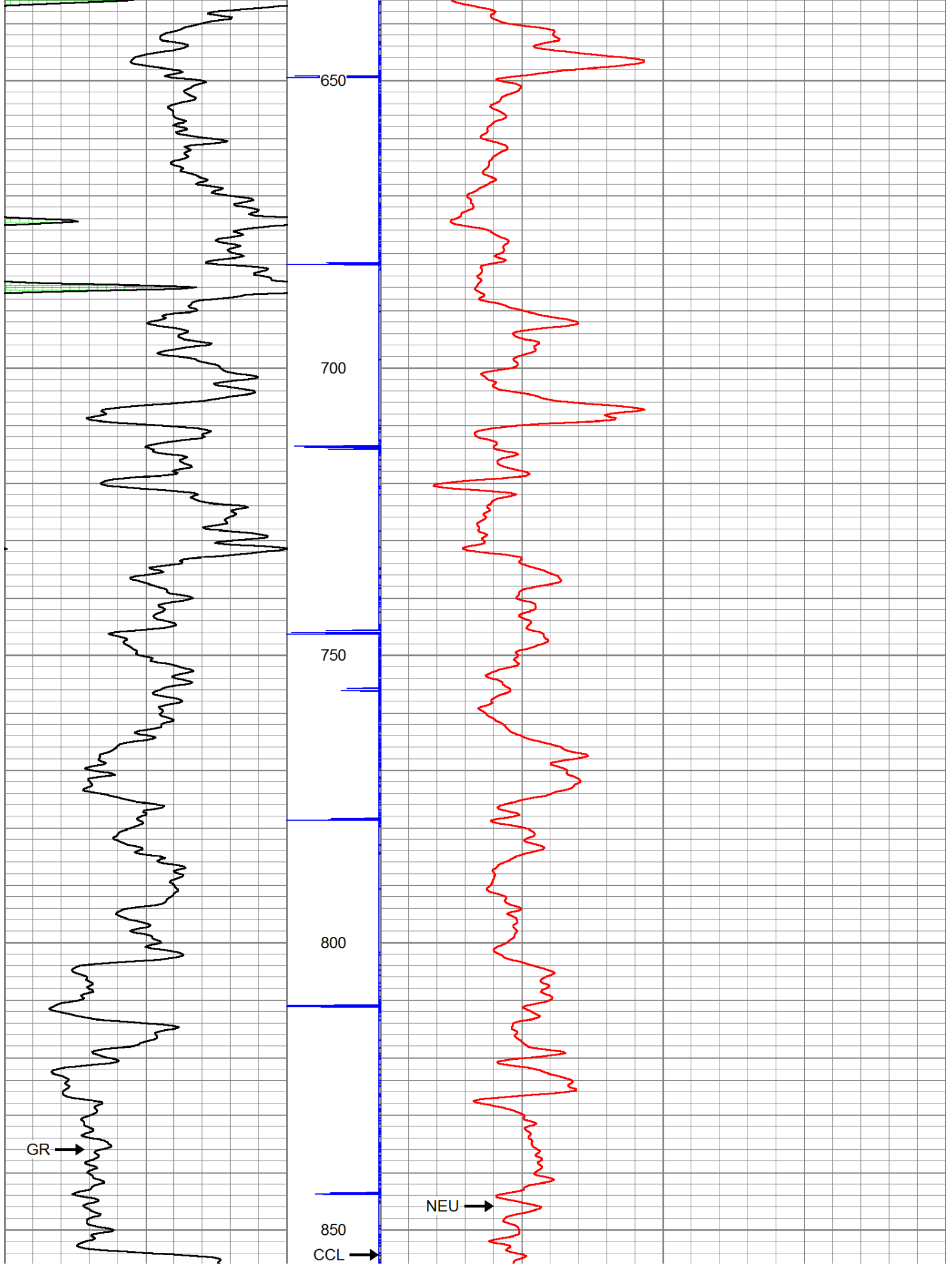
450

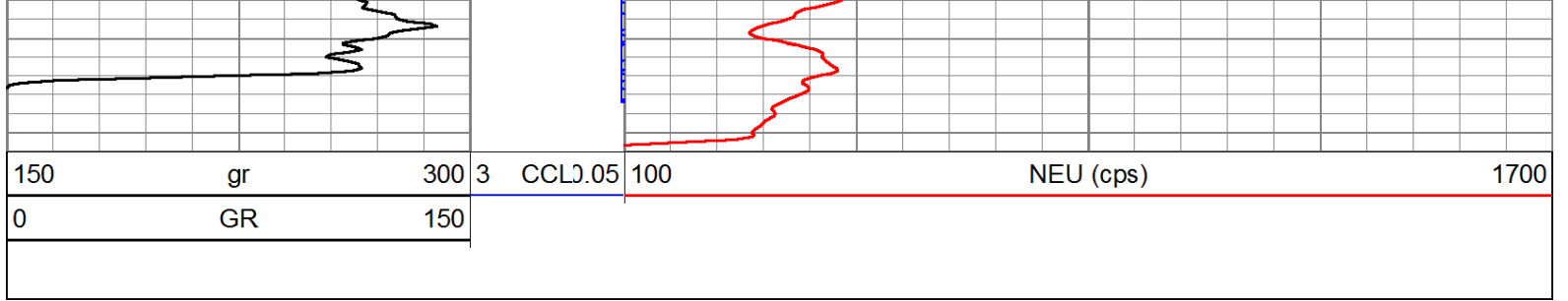
500

550

600







Company	VERDE OIL COMPANY
Well	CAMPBELL #I-95-65
Field	HUMBOLDT - CHANUTE
County	ALLEN SEC. 29 TWP. 26S RGE. 20E
State	KANSAS
Date	9-22-14