



**GAMMA RAY
NEUTRON
COMPLETION LOG**

Company VERDE OIL COMPANY
 Well CAMPBELL #105-125
 Field HUMBOLDT - CHANUTE
 County ALLEN
 State KANSAS

Company VERDE OIL COMPANY
 Well CAMPBELL #105-125
 Field HUMBOLDT - CHANUTE
 County ALLEN State KANSAS

Location: API # : 15-001-31160-00-00
 330' FSL & 660' FEL
 S/2 SE SE
 SEC 29 TWP 26S RGE 20E
 Permanent Datum GL Elevation 1013'EST
 Log Measured From GL K.B.
 Drilling Measured From GL D.F.
 G.L. 1013'EST.

Date	10-31-14		
Run Number	1 NW		
Depth Driller	915'		
Depth Logger	886.5'		
Top Log Interval	0		
Bottom Logged Interval	886.5'		
Fluid Level	FULL		
Type Fluid	WATER		
Production Casing	2 7/8" @ TD	@	@
Max. Recorded Temp.			
Estimated Cement Top			
Calculated Cement Top			
Amount & Type Cement			
Amount & Type Admix			
Drilling Contractor			
Equipment Number	103		
Location			
Recorded By	SOLOMON, B.		
Witnessed By	DALE, J.		

<<< Fold Here >>>

All interpretations are opinions based on inferences from electrical or other measurements and we cannot and do not guarantee the accuracy or correctness of any interpretation, and we shall not, except in the case of gross or willful negligence on our part, be liable or responsible for any loss, costs, damages, or expenses incurred or sustained by anyone resulting from any interpretation made by any of our officers, agents or employees. These interpretations are also subject to our general terms and conditions set out in our current Price Schedule.

Comments

THANK YOU.

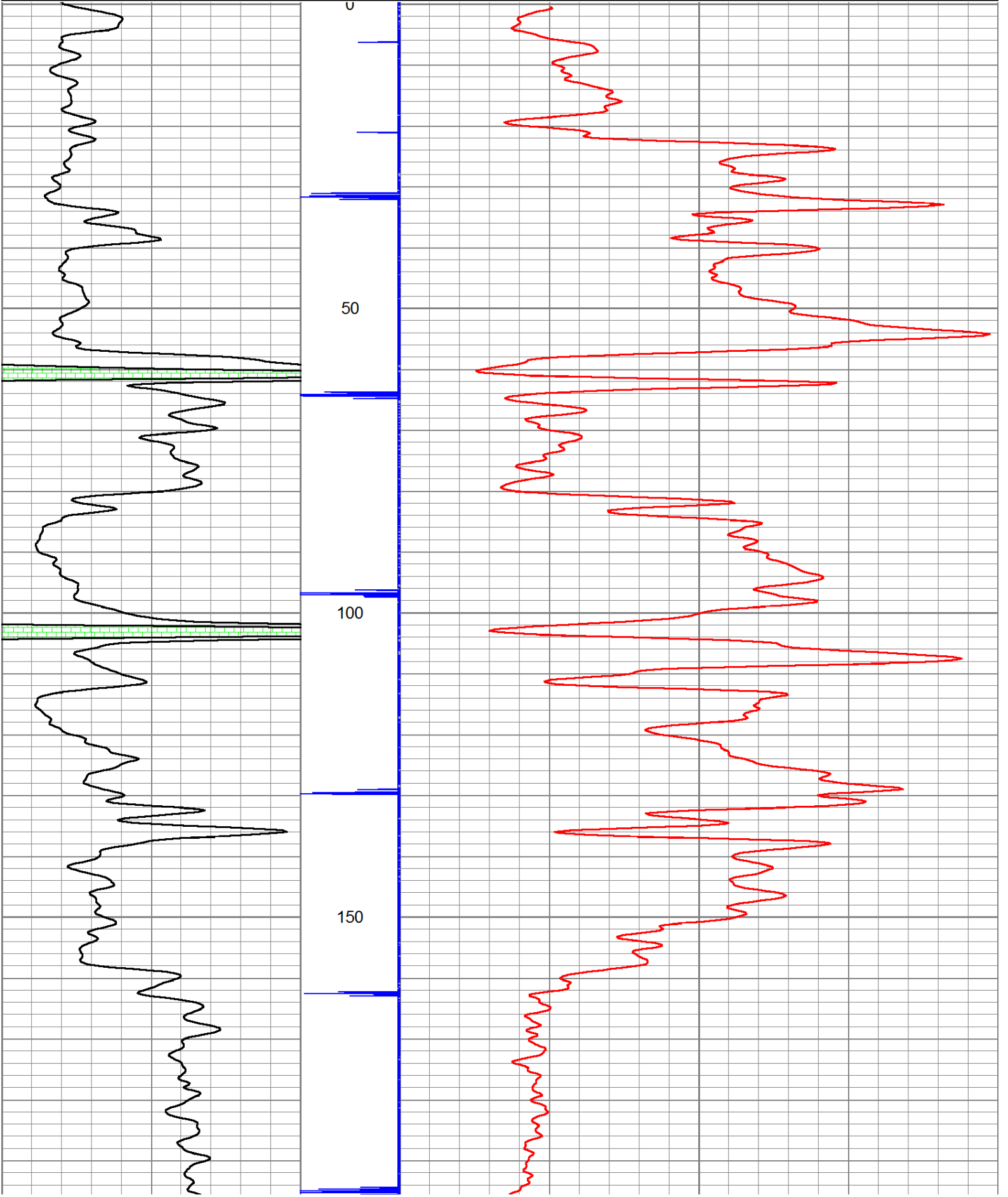
Sensor	Offset (ft)	Schematic	Description	Len (ft)	OD (in)	Wt (lb)

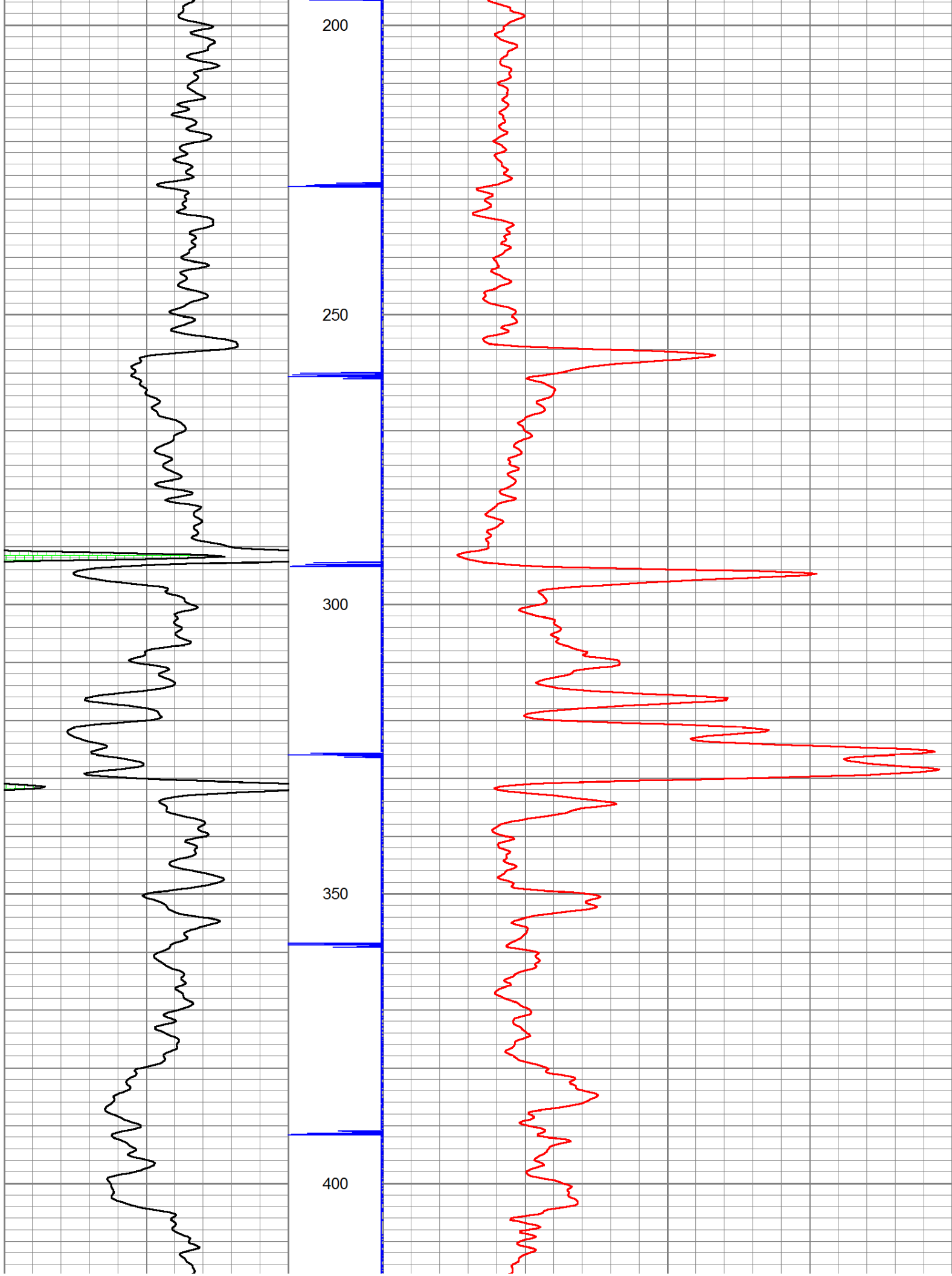
GR	7.59	GR-TITAN_169 (TIT169_001) Titan 1 11/16" Gamma Ray	4.75	1.69	20.00
CCL	5.05	CCL-TITAN_169 (TIT169) Titan 1 11/16" Logging CCL	1.83	1.69	7.50
NEU	0.63	NEU-TITAN (TIT801) TITAN 1 11/16" Neutron	4.33	1.69	25.00

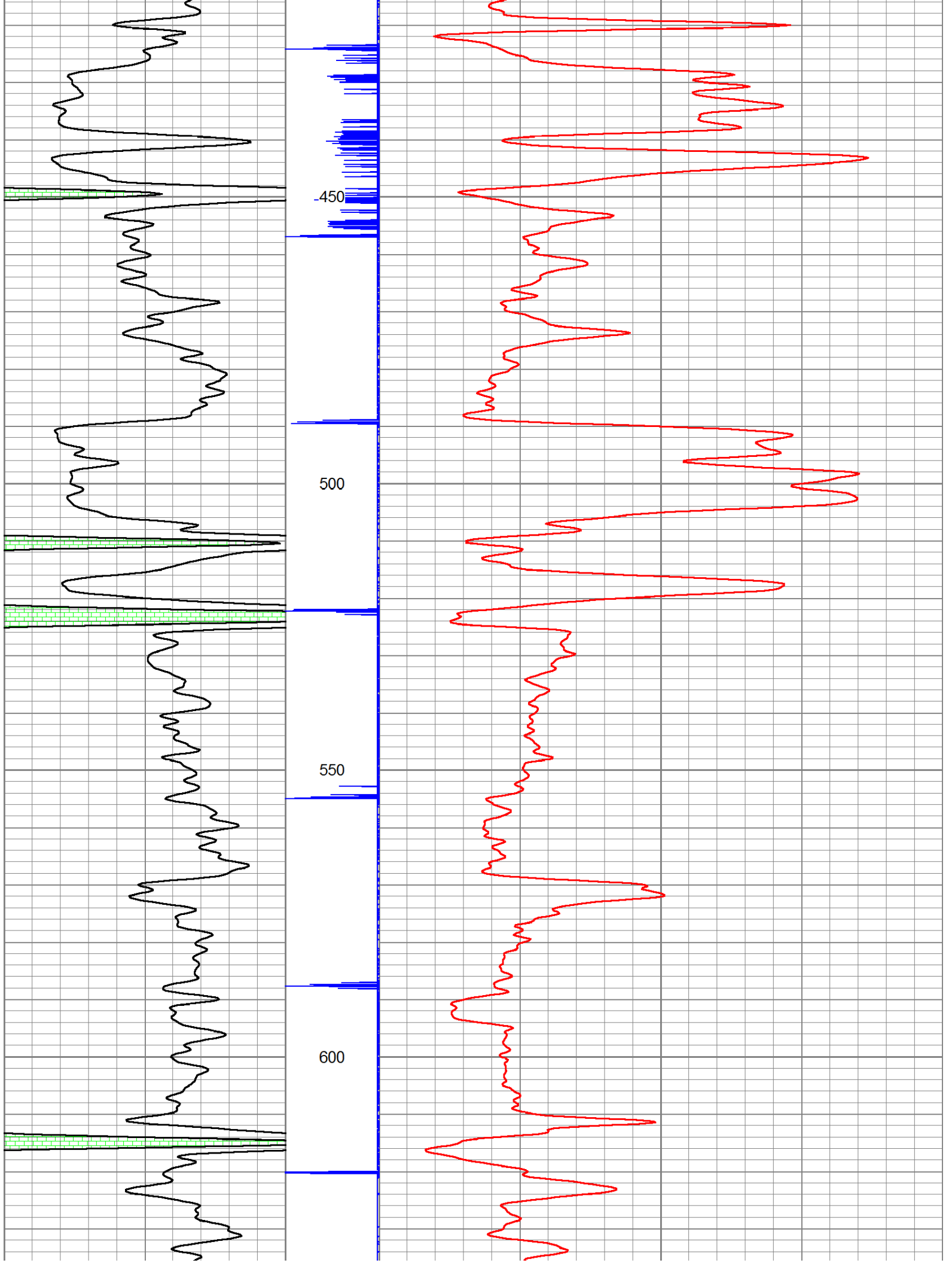
Dataset: campbell #105-125.db: field/well/run1/pass1
 Total Length: 10.92 ft
 Total Weight: 52.50 lb
 O.D.: 1.69 in

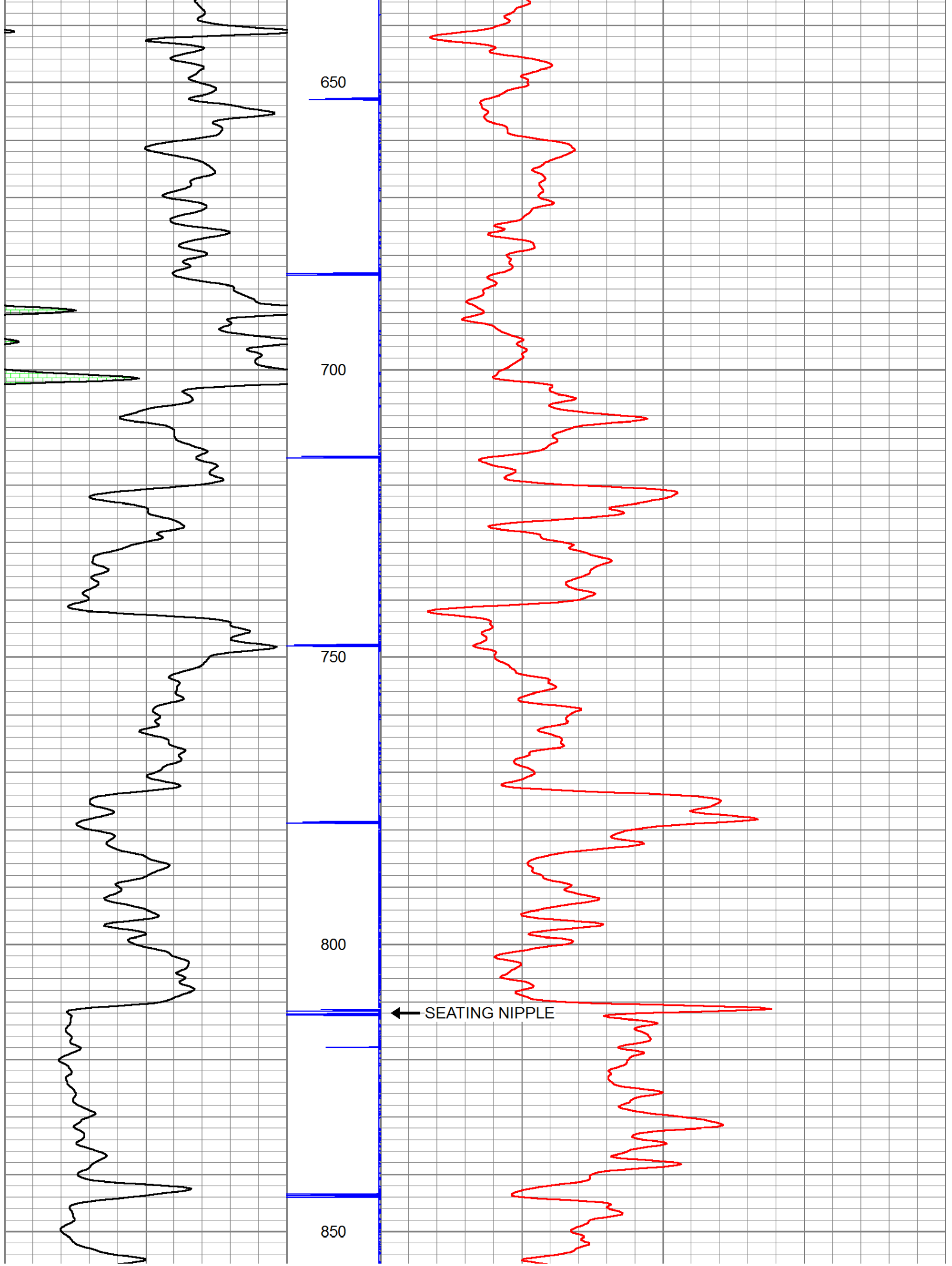
Database File: e:\campbell #105-125.db
 Dataset Pathname: pass1
 Presentation Format: gr-n-ccl

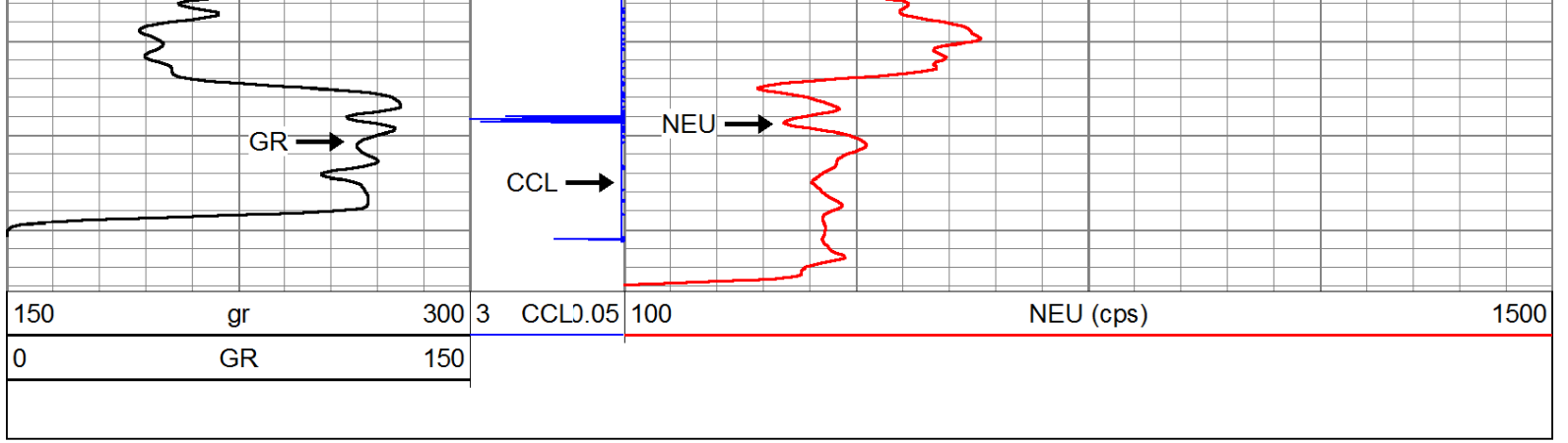
150	gr	300	3	CCLJ.05	100	NEU (cps)	1500
0	GR	150					











Company	VERDE OIL COMPANY
Well	CAMPBELL #105-125
Field	HUMBOLDT - CHANUTE
County	ALLEN SEC. 29 TWP. 26S RGE. 20E
State	KANSAS
Date	10-31-14