



**WIRELINE SERVICES, INC.**  
CHANUTE, KANSAS

**GAMMA RAY  
NEUTRON  
COMPLETION LOG**

Company VERDE OIL COMPANY  
Well CAMPBELL #95-135  
Field HUMBOLDT - CHANUTE  
County ALLEN  
State KANSAS

Company VERDE OIL COMPANY  
Well CAMPBELL #95-135  
Field HUMBOLDT - CHANUTE  
County ALLEN State KANSAS

Location: API #: 15-001-31149-00-00  
660' FSL & 330' FEL  
E/2 SE SE  
SEC 29 TWP 26S RGE 20E  
Permanent Datum GL Elevation 1013'EST  
Log Measured From GL  
Drilling Measured From GK  
Elevation  
K.B.  
D.F.  
G.L. 1013'EST.

Date	9-22-14		
Run Number	1 NW		
Depth Driller	915'		
Depth Logger	880.2'		
Top Log Interval	0		
Bottom Logged Interval	880.2'		
Fluid Level	FULL		
Type Fluid	WATER		
Production Casing	2 7/8" @ TD	@	@
Max. Recorded Temp.			
Estimated Cement Top			
Calculated Cement Top			
Amount & Type Cement			
Amount & Type Admix			
Drilling Contractor			
Equipment Number	103		
Location			
Recorded By	SOLOMON, B.		
Witnessed By	DALE, J.		

<<< Fold Here >>>

All interpretations are opinions based on inferences from electrical or other measurements and we cannot and do not guarantee the accuracy or correctness of any interpretation, and we shall not, except in the case of gross or willful negligence on our part, be liable or responsible for any loss, costs, damages, or expenses incurred or sustained by anyone resulting from any interpretation made by any of our officers, agents or employees. These interpretations are also subject to our general terms and conditions set out in our current Price Schedule.

Comments

THANK YOU

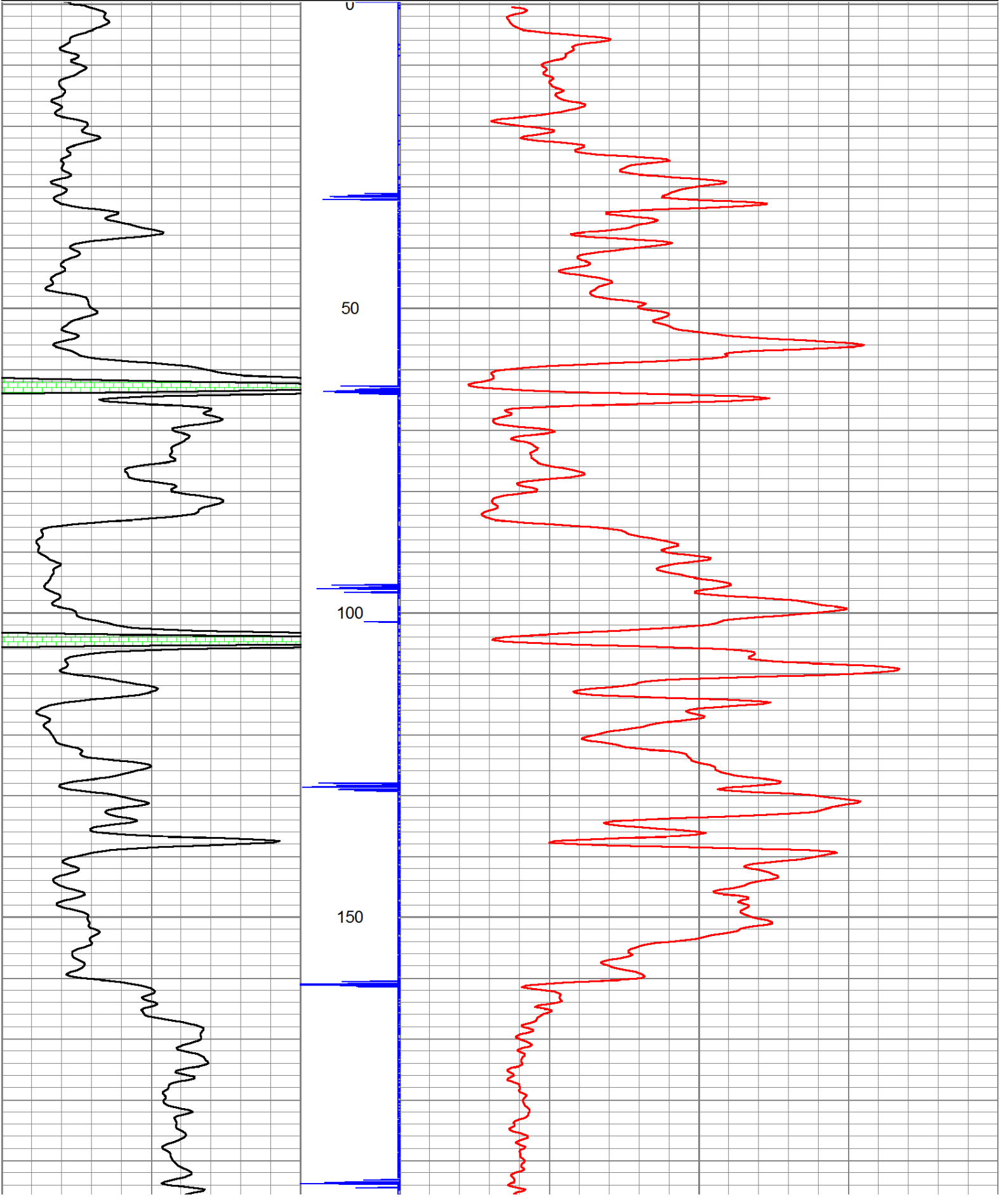
Sensor	Offset (ft)	Schematic	Description	Len (ft)	OD (in)	Wt (lb)

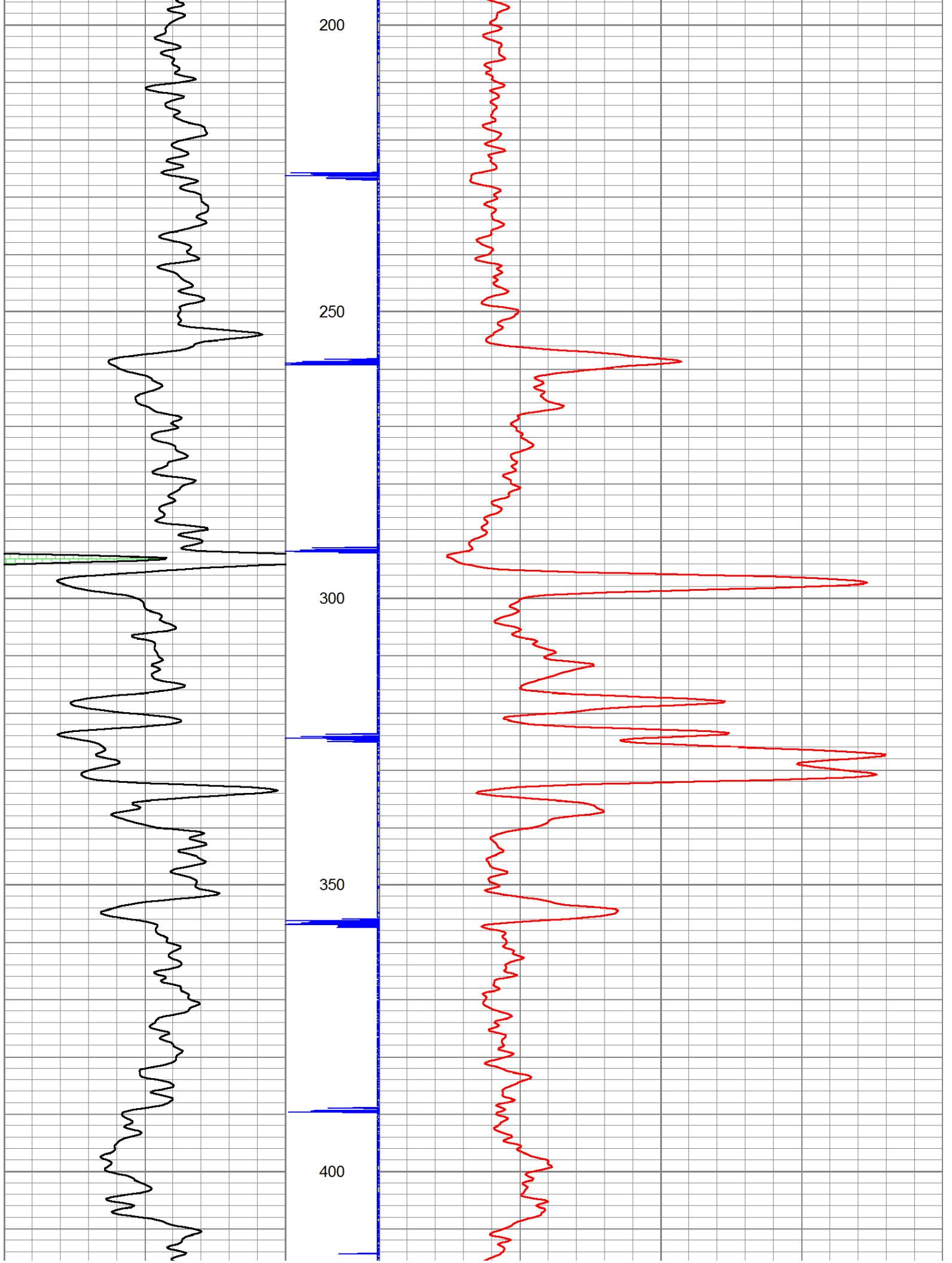
GR	7.59	GR-TITAN_169 (TIT169_001) Titan 1 11/16" Gamma Ray	4.75	1.69	20.00
CCL	5.05	CCL-TITAN_169 (TIT169) Titan 1 11/16" Logging CCL	1.83	1.69	7.50
NEU	0.63	NEU-TITAN (TIT801) TITAN 1 11/16" Neutron	4.33	1.69	25.00

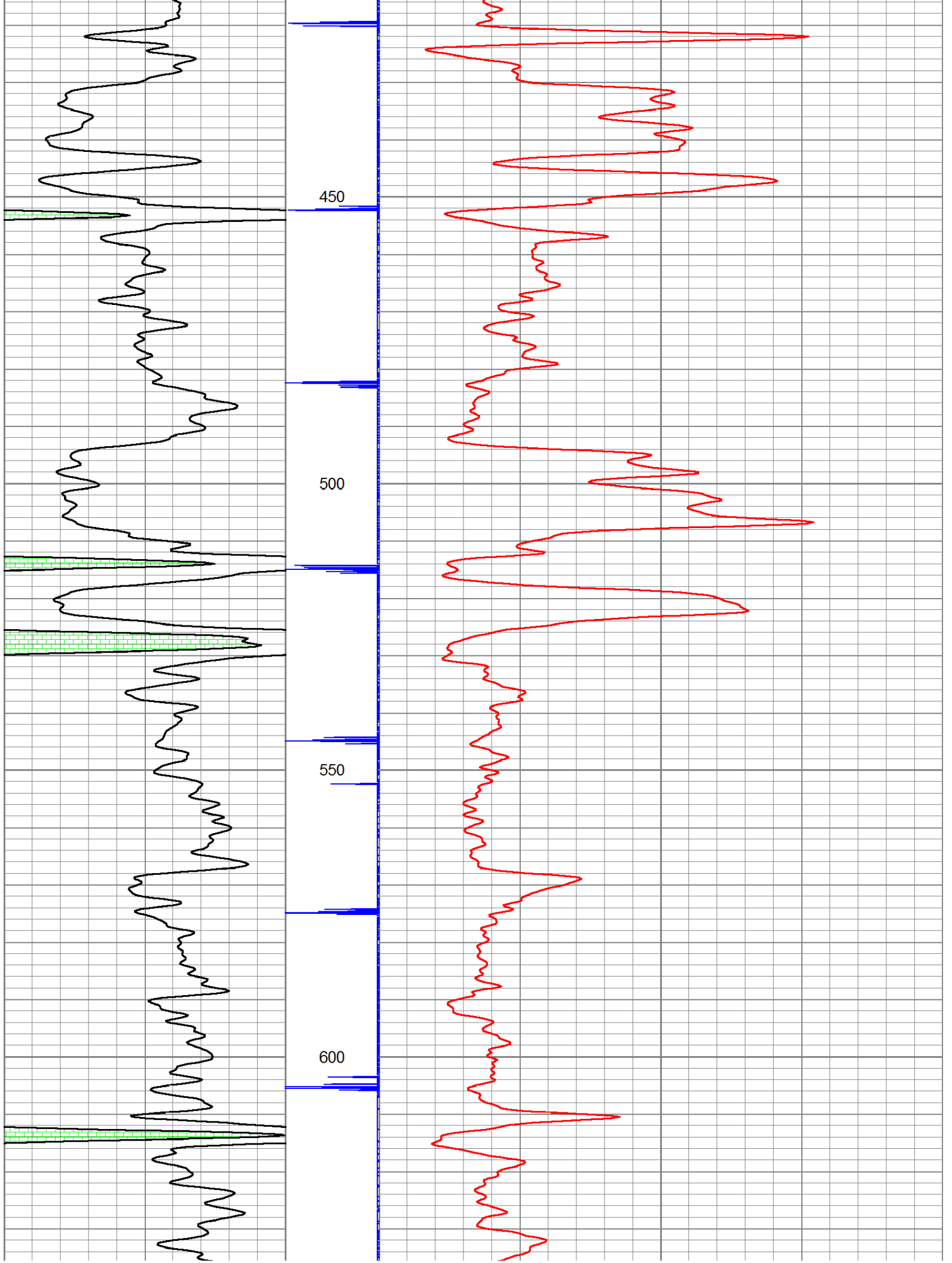
Dataset: campbell #95-135.db: field/well/run1/pass1  
 Total Length: 10.92 ft  
 Total Weight: 52.50 lb  
 O.D. 1.69 in

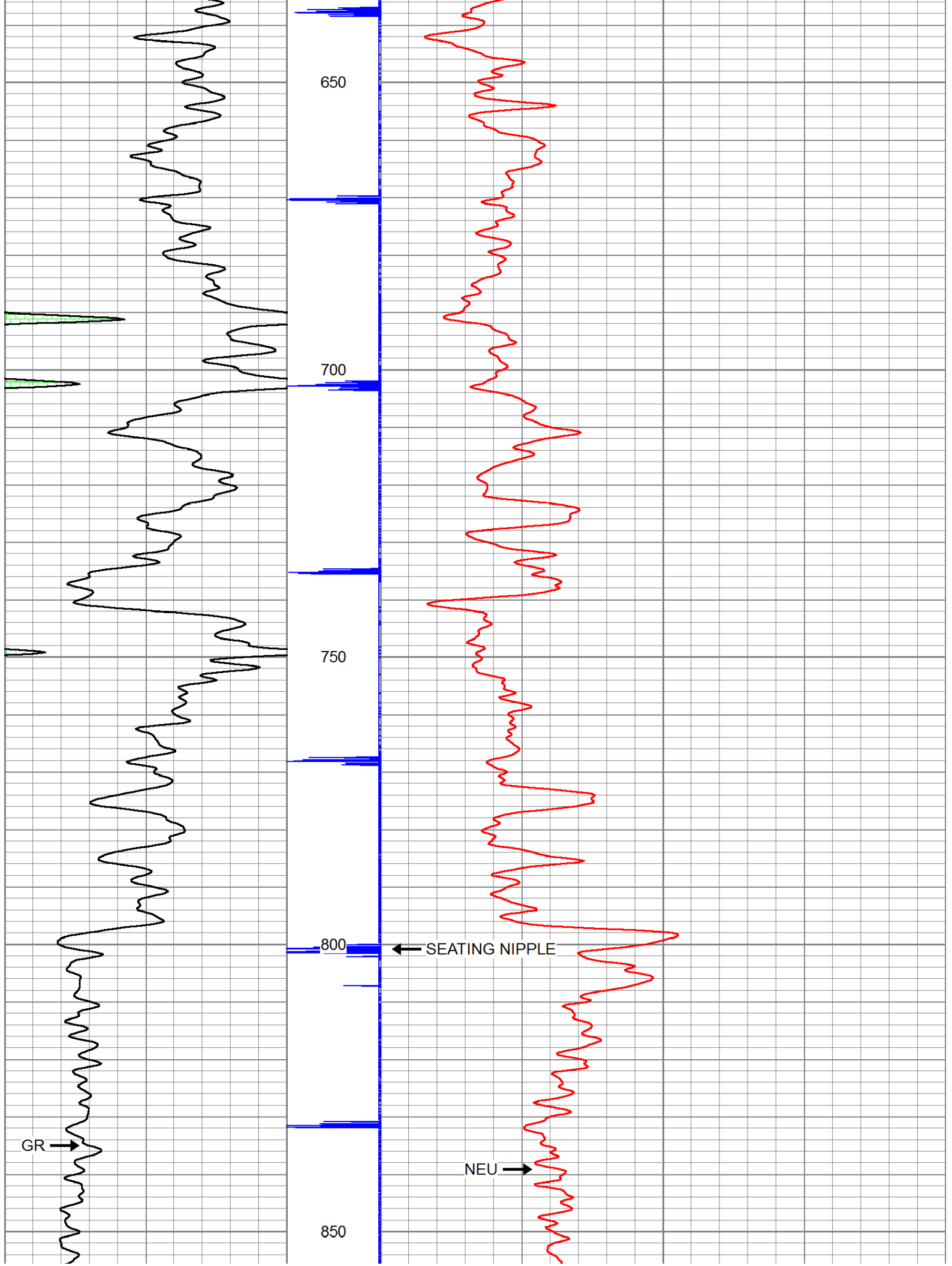
Database File: p:\logs\verde oil company\campbell #95-135\campbell #95-135.db  
 Dataset Pathname: pass1  
 Presentation Format: gr-n-ccl

150	gr	300	3	CCLJ.05	100	NEU (cps)	1700
0	GR	150					









650

700

750

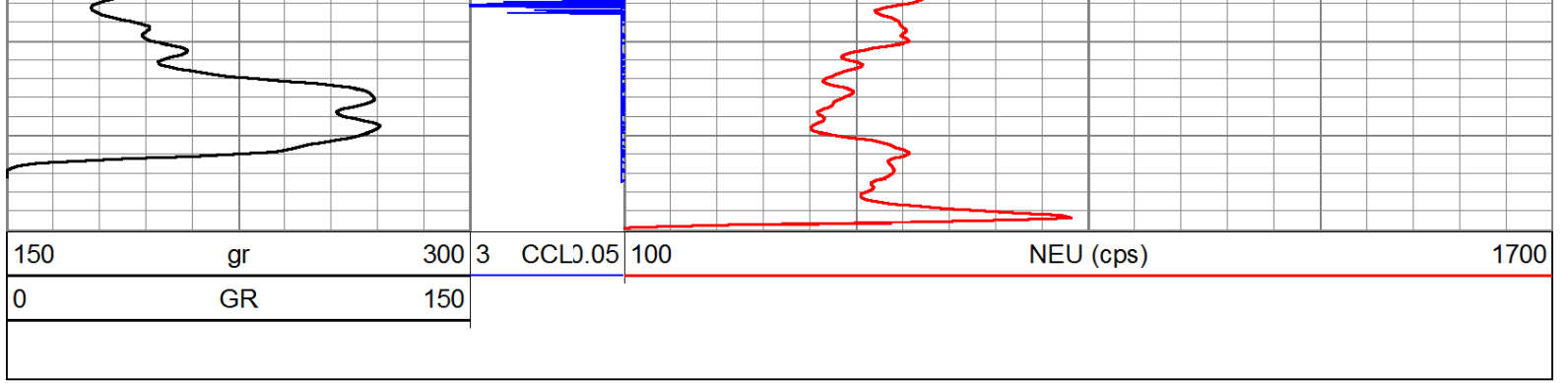
800

850

GR

← SEATING NIPPLE

NEU →



Company	VERDE OIL COMPANY
Well	CAMPBELL #95-135
Field	HUMBOLDT - CHANUTE
County	ALLEN SEC. 29 TWP. 26S RGE. 20E
State	KANSAS
Date	9-22-14