



**GAMMA RAY
NEUTRON
COMPLETION LOG**

Company VERDE OIL COMPANY
 Well CAMPBELL #105-105
 Field HUMBOLDT - CHANUTE
 County ALLEN
 State KANSAS

Company VERDE OIL COMPANY
 Well CAMPBELL #105-105
 Field HUMBOLDT - CHANUTE
 County ALLEN State KANSAS

Location: API #: 15-001-31158-00-00
 330' FSL & 1320' FEL
 S/2 S/2 SE
 SEC 29 TWP 26S RGE 20E
 Permanent Datum GL Elevation 1017EST
 Log Measured From GL
 Drilling Measured From GL
 Elevation K.B. D.F. G.L. 1017EST.

| | |
|------------------------|---------------|
| Date | 10-31-14 |
| Run Number | 1 NW |
| Depth Driller | 915' |
| Depth Logger | 885.6' |
| Top Log Interval | 0 |
| Bottom Logged Interval | 885.6' |
| Fluid Level | FULL |
| Type Fluid | WATER |
| Production Casing | 2 7/8" @ TD @ |
| Max. Recorded Temp. | |
| Estimated Cement Top | |
| Calculated Cement Top | |
| Amount & Type Cement | |
| Amount & Type Admix | |
| Drilling Contractor | |
| Equipment Number | 103 |
| Location | |
| Recorded By | SOLOMON, B. |
| Witnessed By | DALE, J. |

<<< Fold Here >>>

All interpretations are opinions based on inferences from electrical or other measurements and we cannot and do not guarantee the accuracy or correctness of any interpretation, and we shall not, except in the case of gross or willful negligence on our part, be liable or responsible for any loss, costs, damages, or expenses incurred or sustained by anyone resulting from any interpretation made by any of our officers, agents or employees. These interpretations are also subject to our general terms and conditions set out in our current Price Schedule.

Comments

THANK YOU.

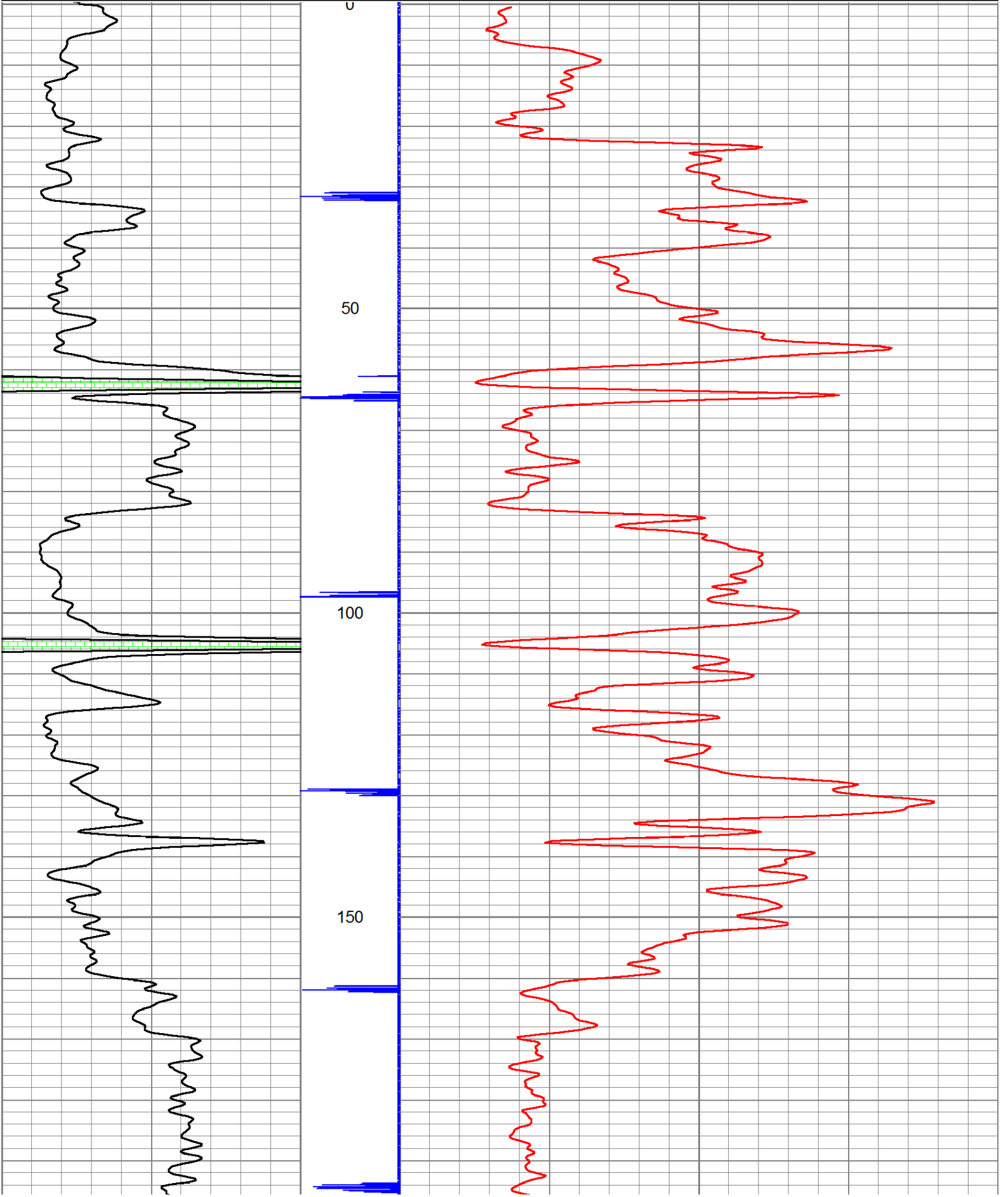
| Sensor | Offset (ft) | Schematic | Description | Len (ft) | OD (in) | Wt (lb) |
|--------|-------------|-----------|-------------|----------|---------|---------|
| | | | | | | |

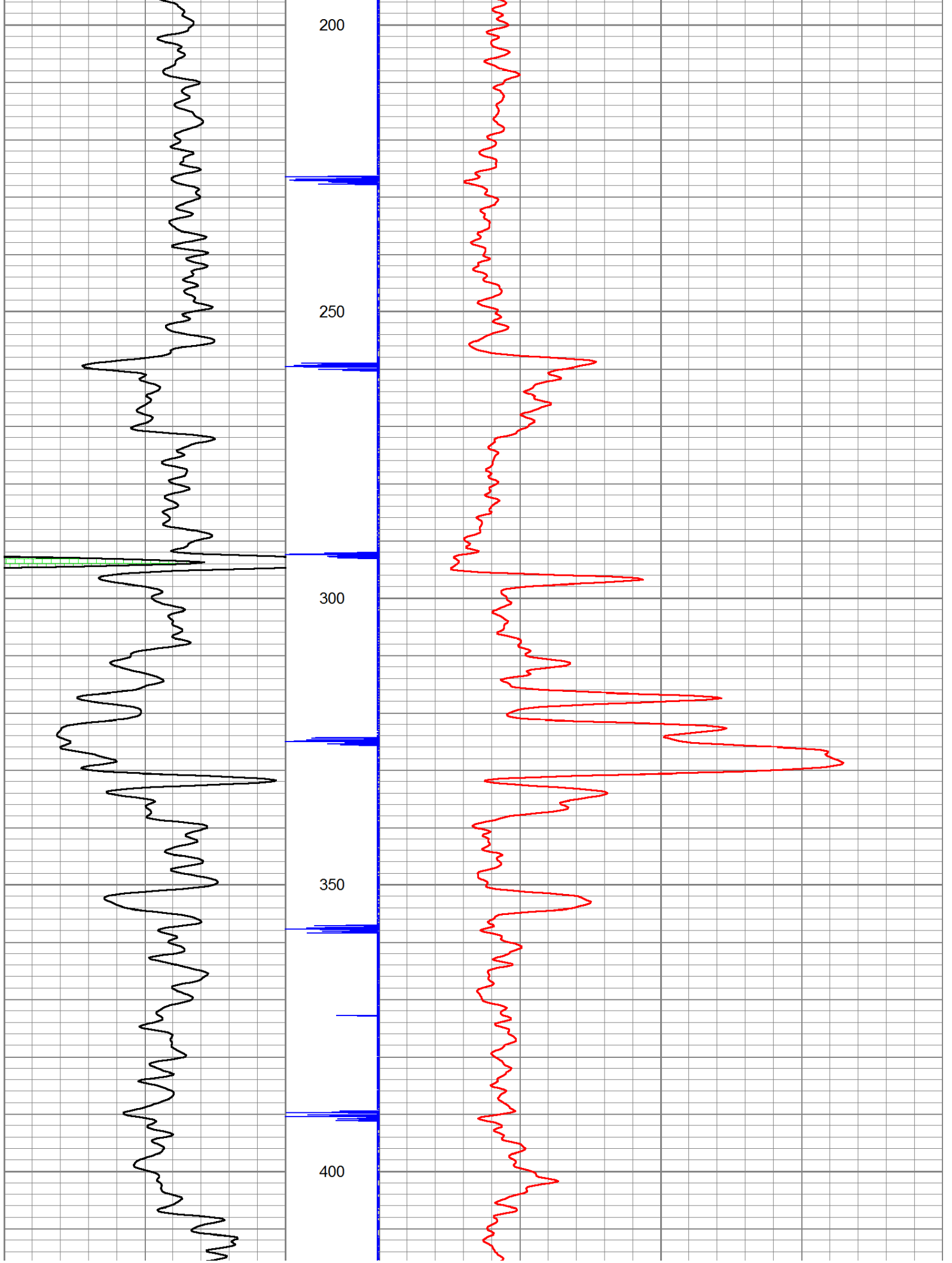
| | | | | | |
|-----|------|---|------|------|-------|
| GR | 7.59 | GR-TITAN_169 (TIT169_001) Titan 1 11/16" Gamma Ray | 4.75 | 1.69 | 20.00 |
| CCL | 5.05 | CCL-TITAN_169 (TIT169) Titan 1 11/16" Logging CCL | 1.83 | 1.69 | 7.50 |
| NEU | 0.63 | NEU-TITAN (TIT801) TITAN 1 11/16" Neutron | 4.33 | 1.69 | 25.00 |

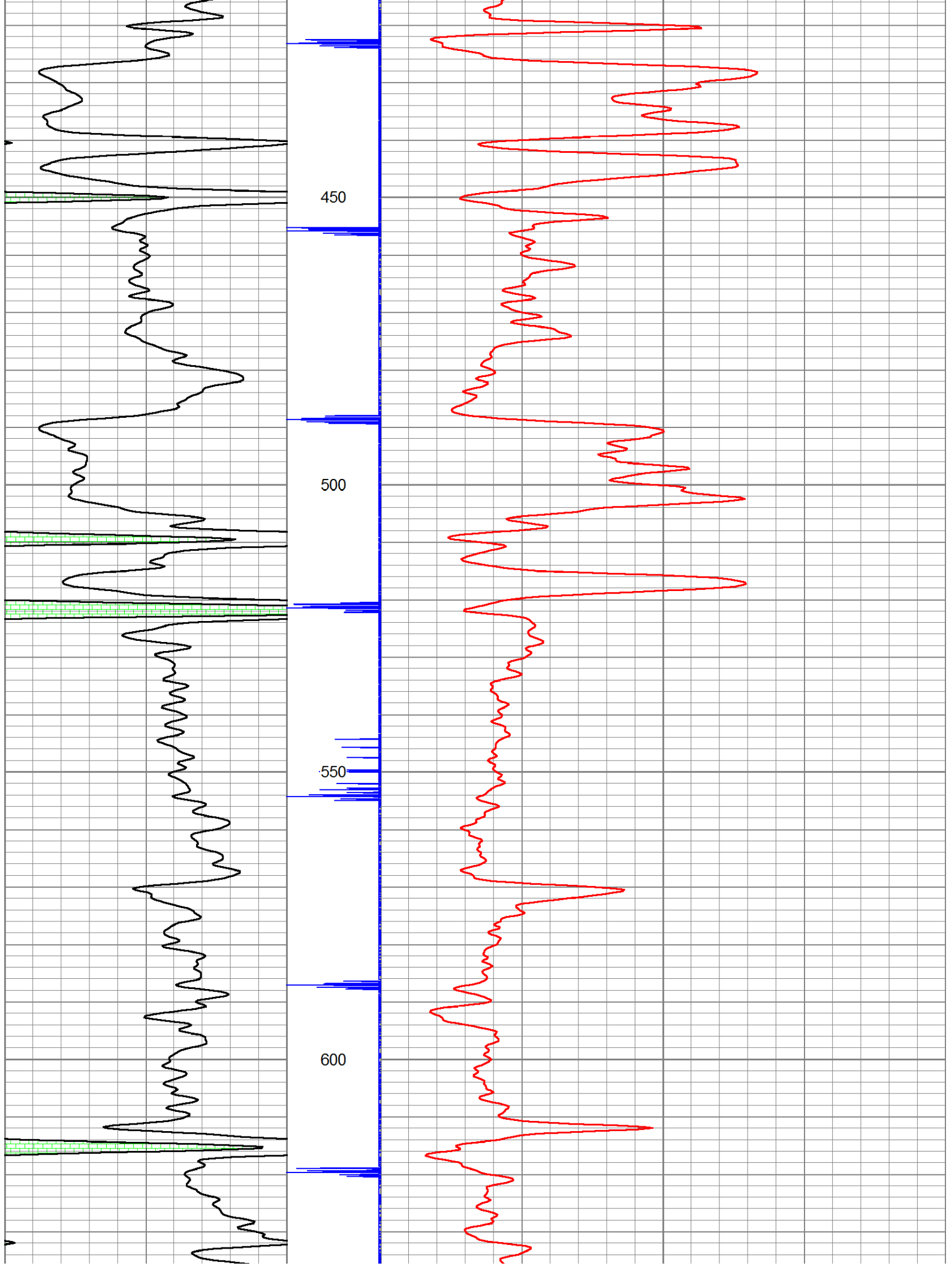
Dataset: campbell #105-105.db: field/well/run1/pass1
 Total Length: 10.92 ft
 Total Weight: 52.50 lb
 O.D.: 1.69 in

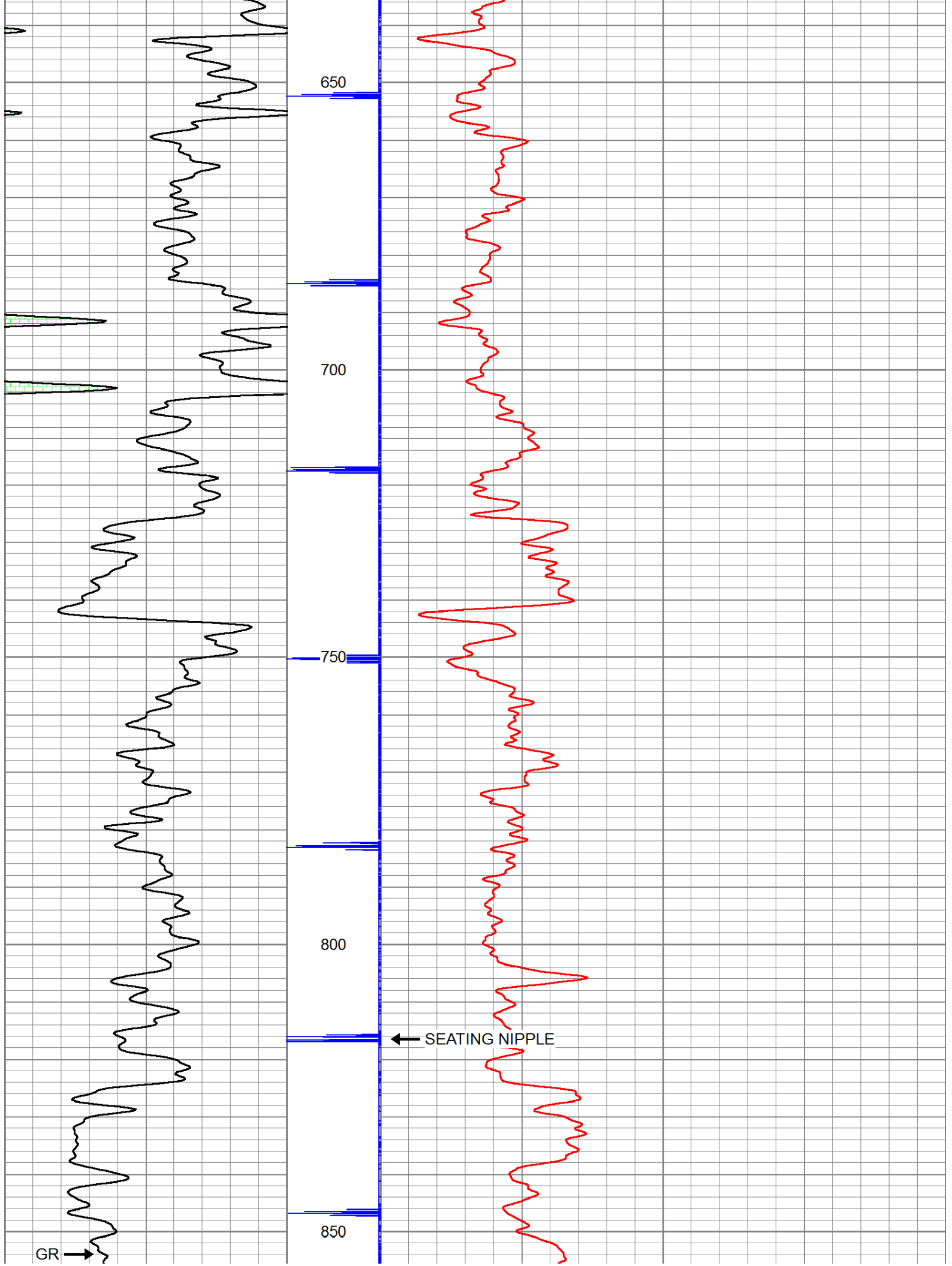
Database File: e:\campbell #105-105.db
 Dataset Pathname: pass1
 Presentation Format: gr-n-ccl

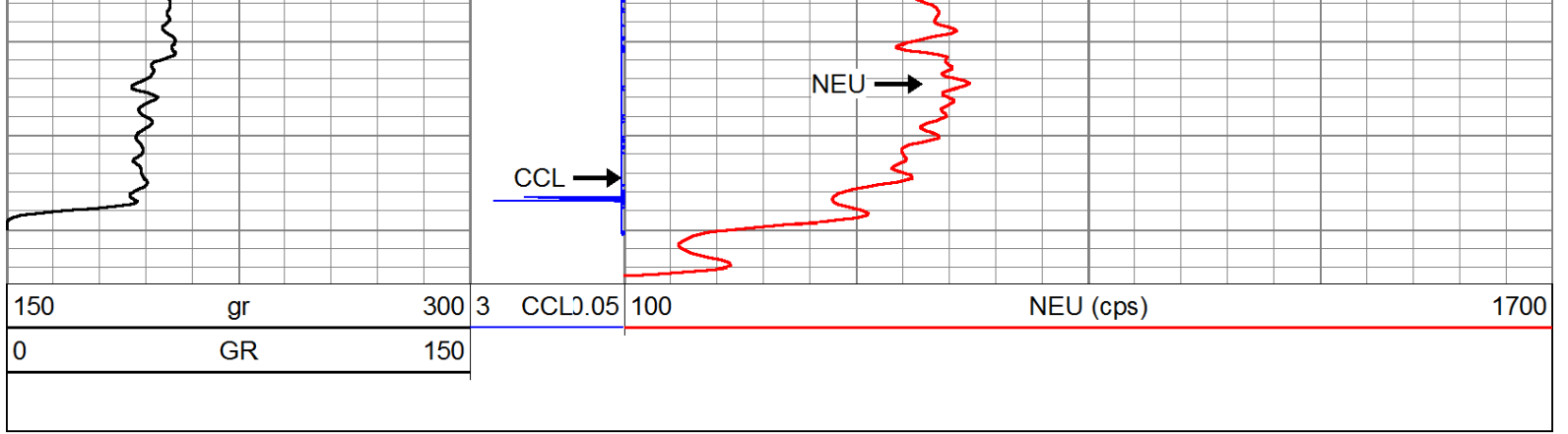
| | | | | | | | |
|-----|----|-----|---|---------|-----|-----------|------|
| 150 | gr | 300 | 3 | CCLJ.05 | 100 | NEU (cps) | 1700 |
| 0 | GR | 150 | | | | | |











| | |
|---------|---------------------------------|
| Company | VERDE OIL COMPANY |
| Well | CAMPBELL #105-105 |
| Field | HUMBOLDT - CHANUTE |
| County | ALLEN SEC. 29 TWP. 26S RGE. 20E |
| State | KANSAS |
| Date | 10-31-14 |