



**GAMMA RAY  
NEUTRON  
COMPLETION LOG**

Company **MIDWAY OIL COMPANY**  
Well **TANNAHILL #1-6**  
Field **VERNON**  
County **WOODSON**  
State **KANSAS**

Company **MIDWAY OIL COMPANY**  
Well **TANNAHILL #1-6**  
Field **VERNON**  
County **WOODSON** State **KANSAS**

Location: **API # : 15-207-29066-00-00** Other Services  
**980' FNL & 2360' FEL**  
**NW SW NW NE**  
**SEC 4 TWP 24S RGE 16E**  
Permanent Datum **G.L.** Elevation **1045'EST**  
Log Measured From **G.L.** **K.B.**  
Drilling Measured From **G.L.** **D.F.**  
**G.L. 1045'EST.**

Date	10-24-2014		
Run Number	1-NEWWELL		
Depth Driller	1117'		
Depth Logger	1102.2'		
Top Log Interval	SURFACE		
Bottom Logged Interval	1102.2'		
Fluid Level	FULL		
Type Fluid	WATER		
Production Casing	2 7/8" @ 1111'	8 5/8" @ 43'	@
Max. Recorded Temp.			
Estimated Cement Top			
Calculated Cement Top			
Amount & Type Cement			
Amount & Type Admix			
Drilling Contractor	WOCO		
Equipment Number	107		
Location			
Recorded By	UDEN, D.		
Witnessed By	LEIS, V.		

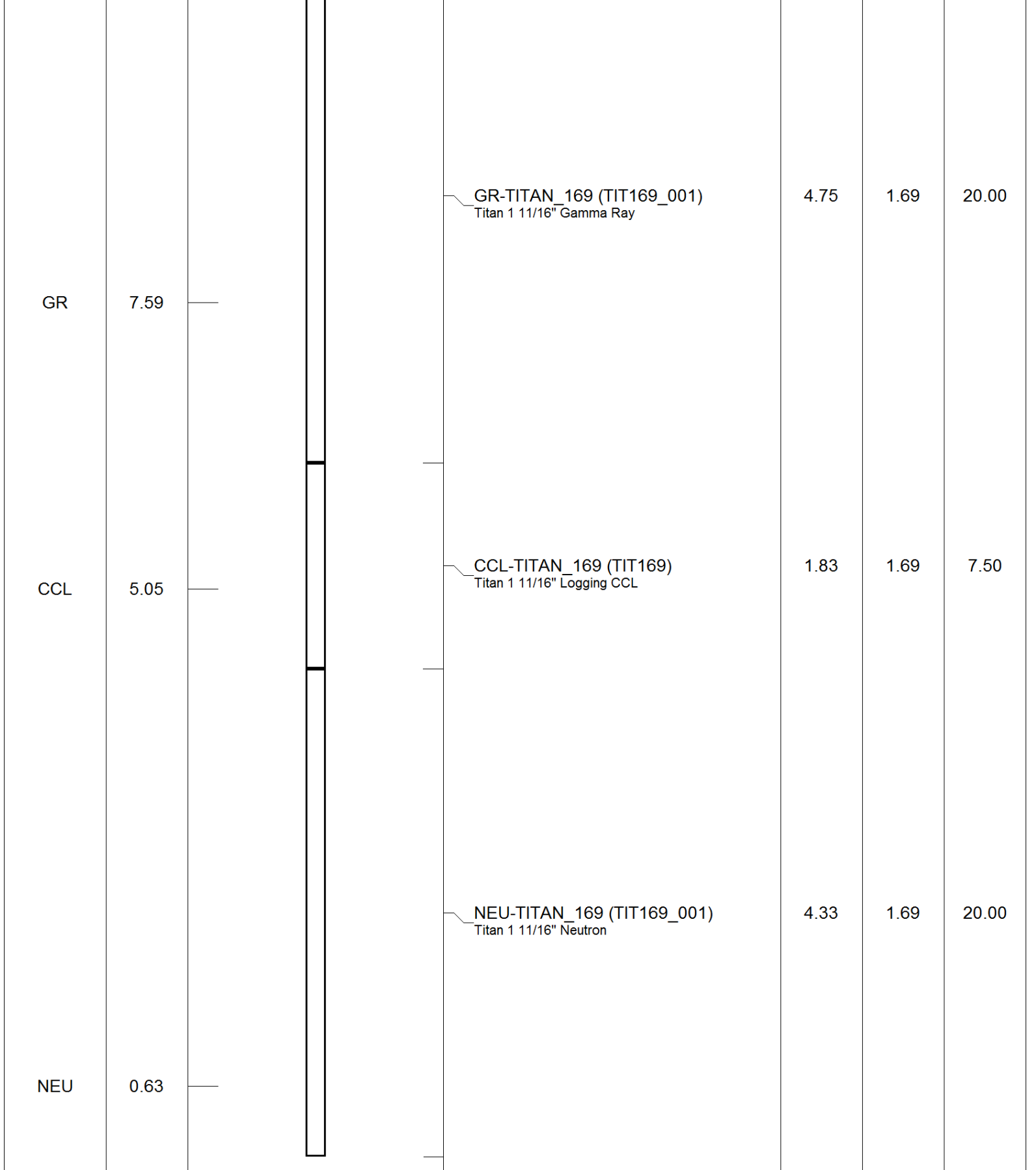
<<< Fold Here >>>

All interpretations are opinions based on inferences from electrical or other measurements and we cannot and do not guarantee the accuracy or correctness of any interpretation, and we shall not, except in the case of gross or willful negligence on our part, be liable or responsible for any loss, costs, damages, or expenses incurred or sustained by anyone resulting from any interpretation made by any of our officers, agents or employees. These interpretations are also subject to our general terms and conditions set out in our current Price Schedule.

Comments

THANK YOU

Sensor	Offset (ft)	Schematic	Description	Len (ft)	OD (in)	Wt (lb)

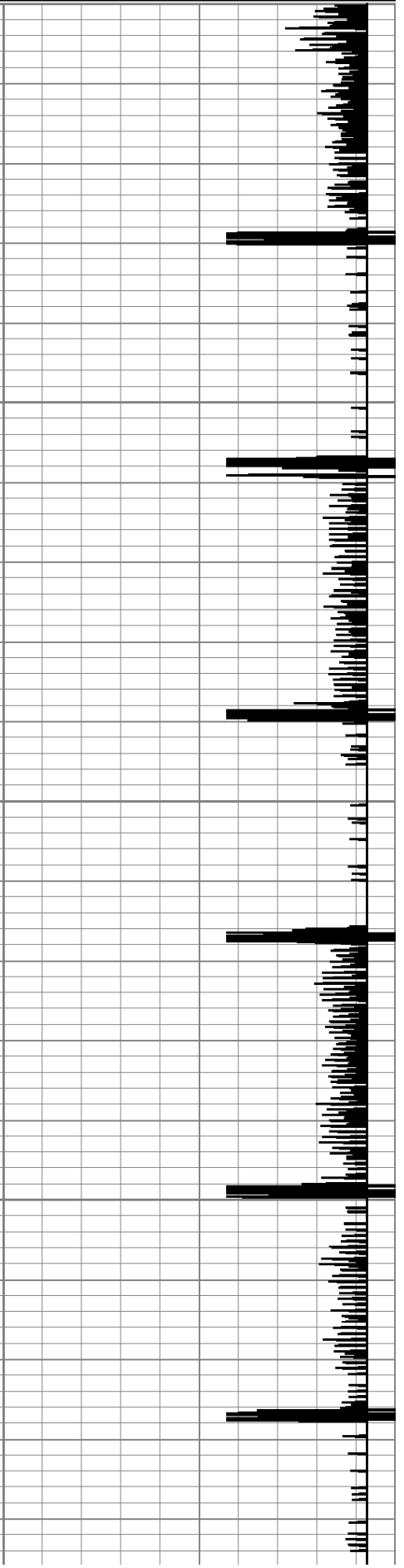
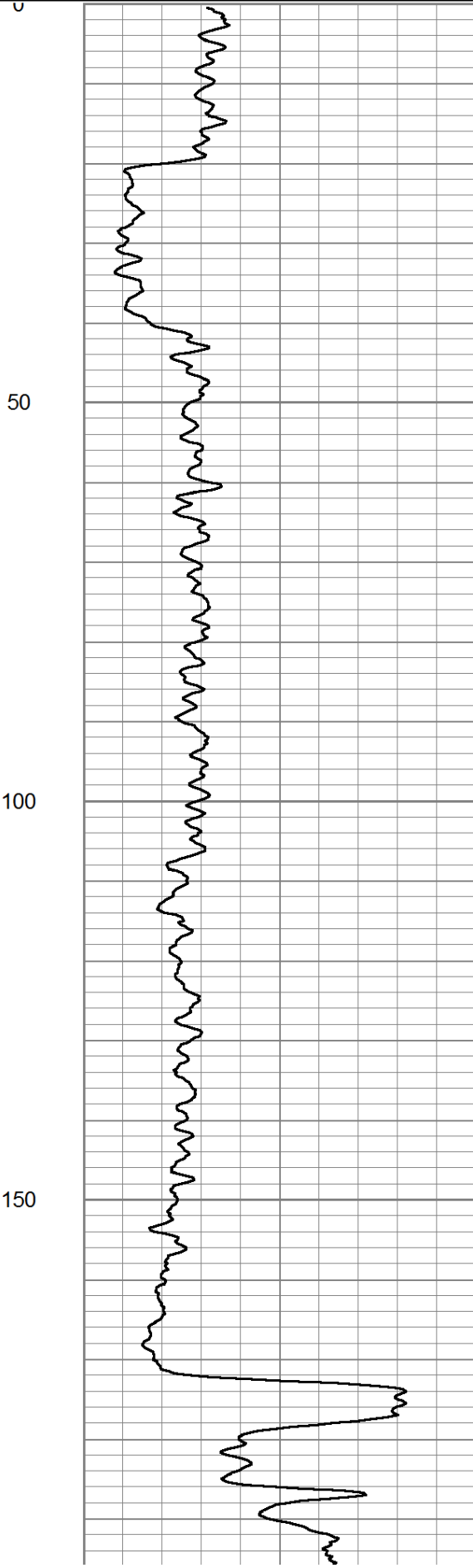
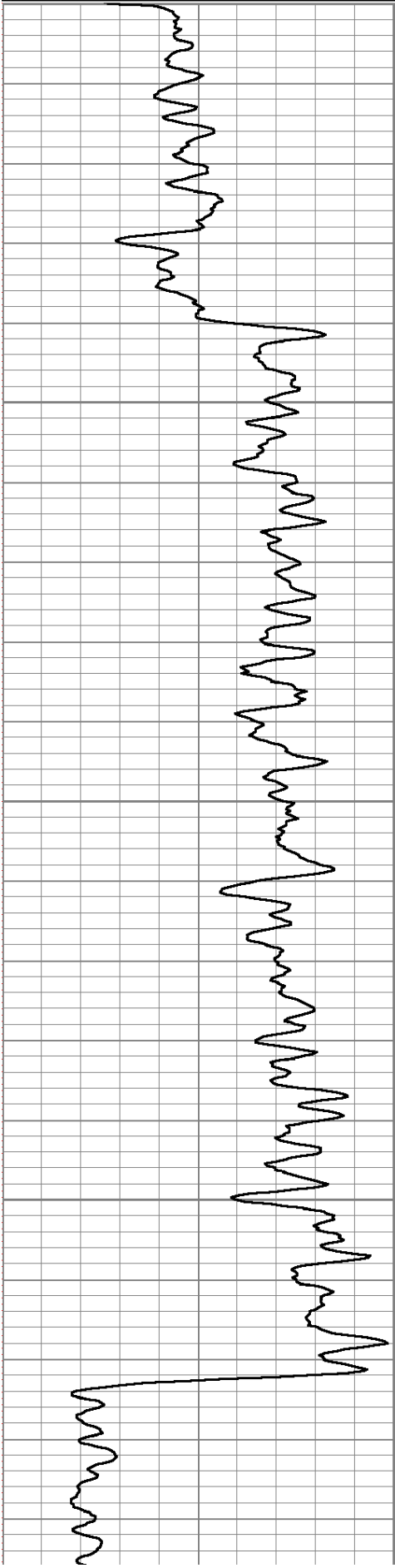


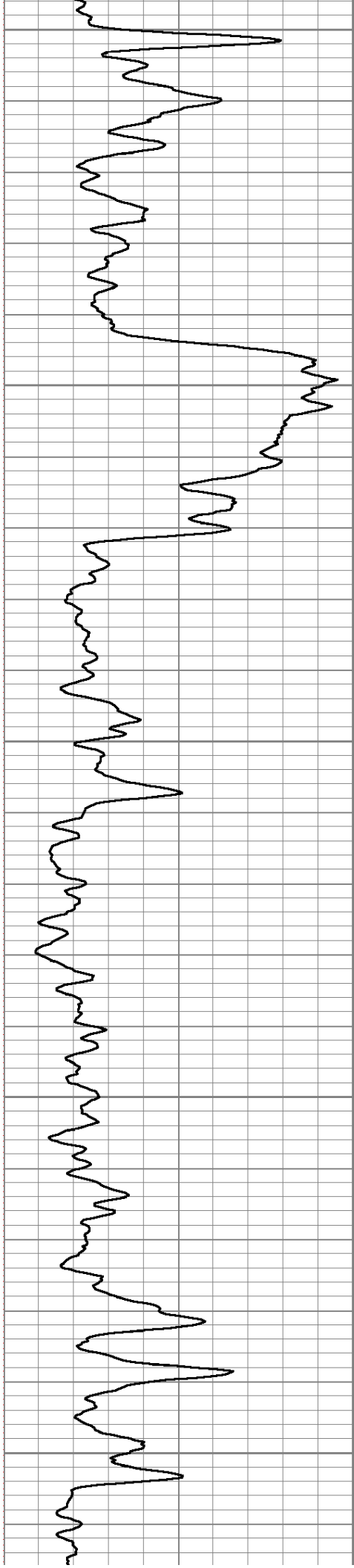
Dataset: tannahill #-6.db: field/well/run1/pass2  
 Total Length: 10.92 ft  
 Total Weight: 47.50 lb  
 O.D.: 1.69 in

Database File: e:\tannahill #-6.db  
 Dataset Pathname: pass2  
 Presentation Format: gr-n-ccl

0	GR	150
150	gr	300

100	NEU	1500
13	CCL	-1





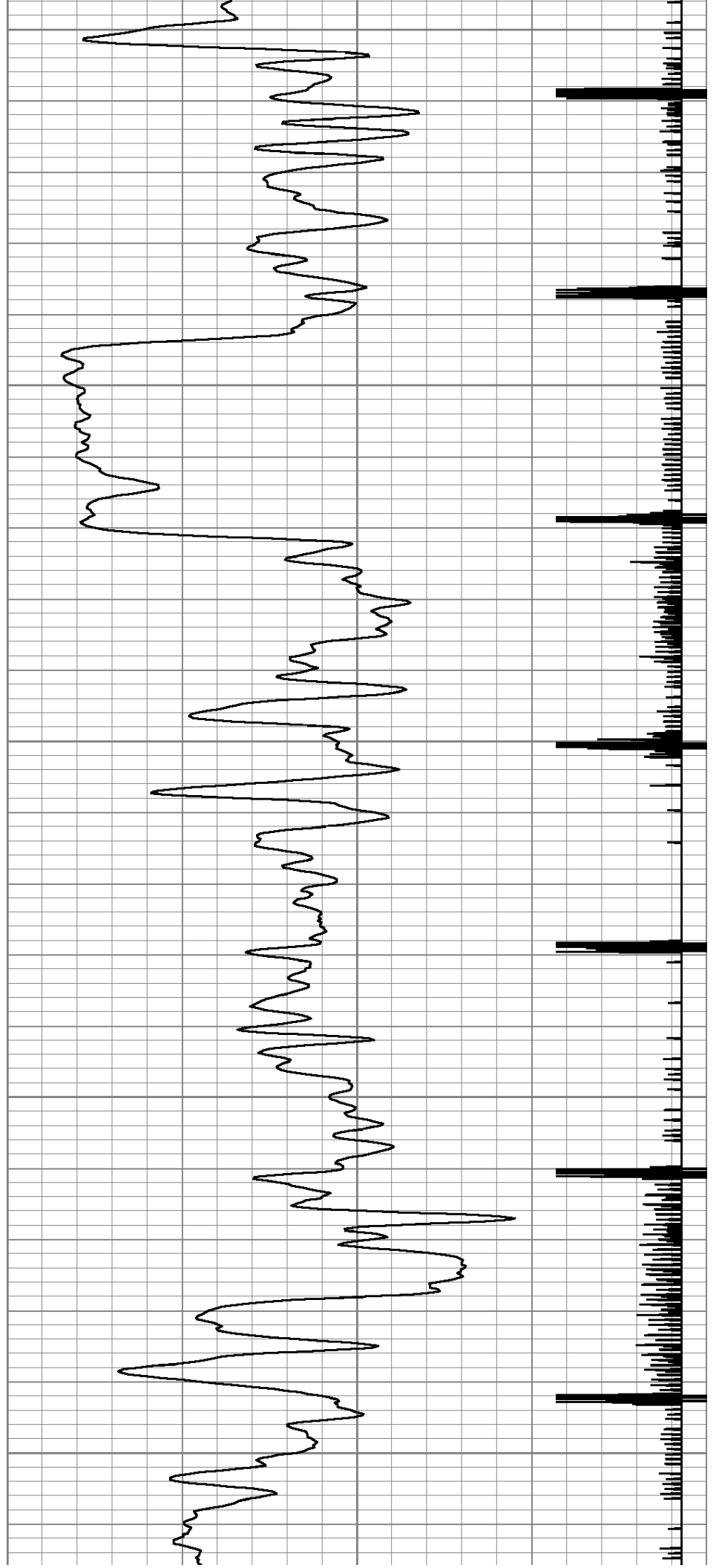
200

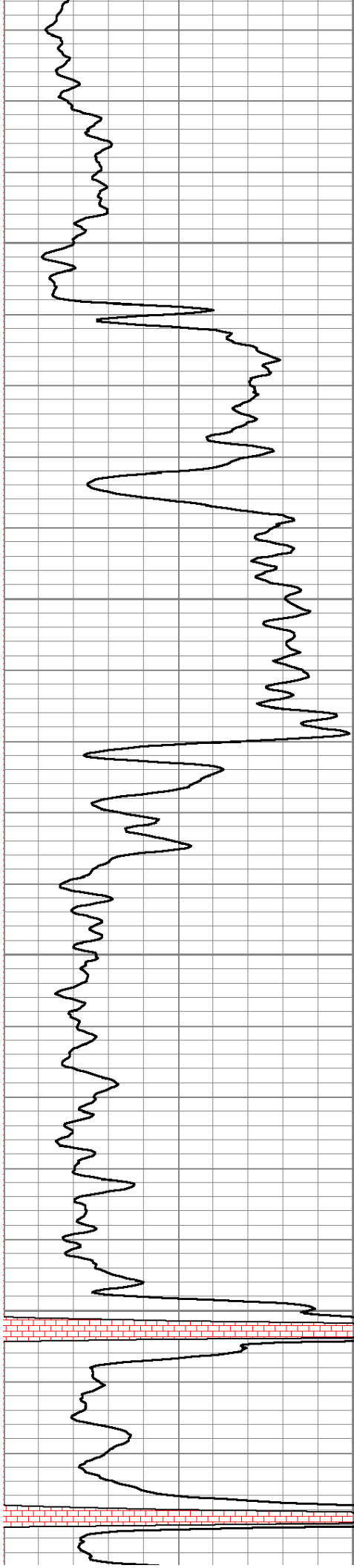
250

300

350

400



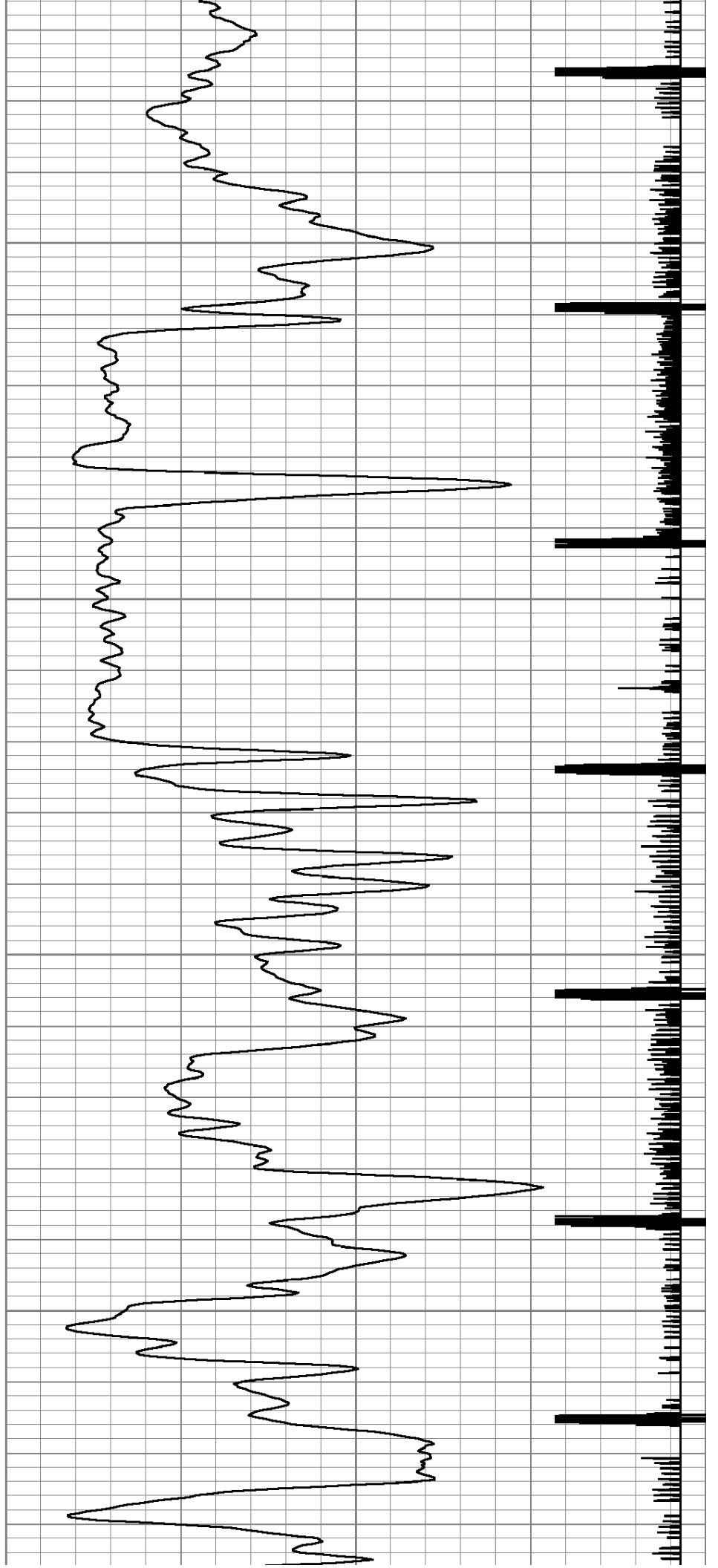


450

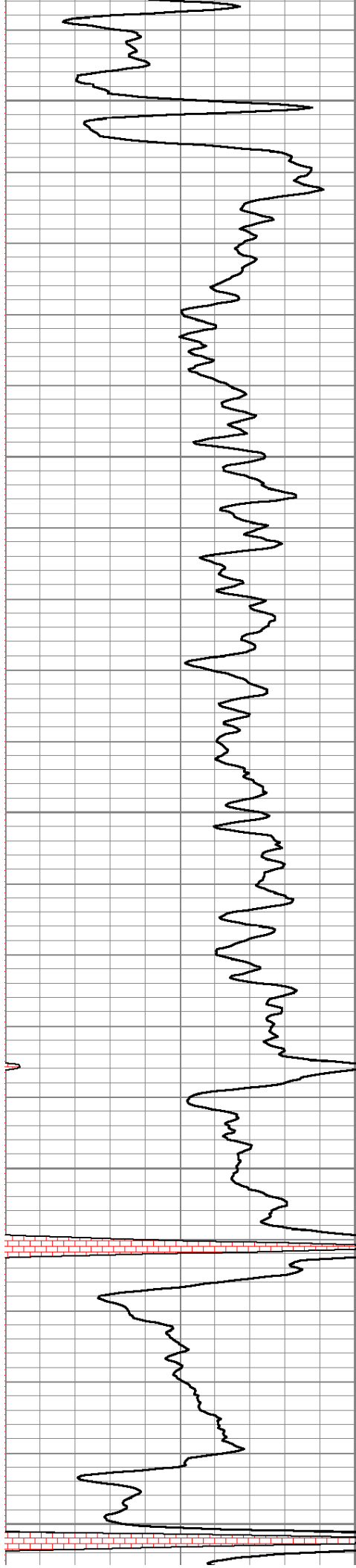
500

550

600



600



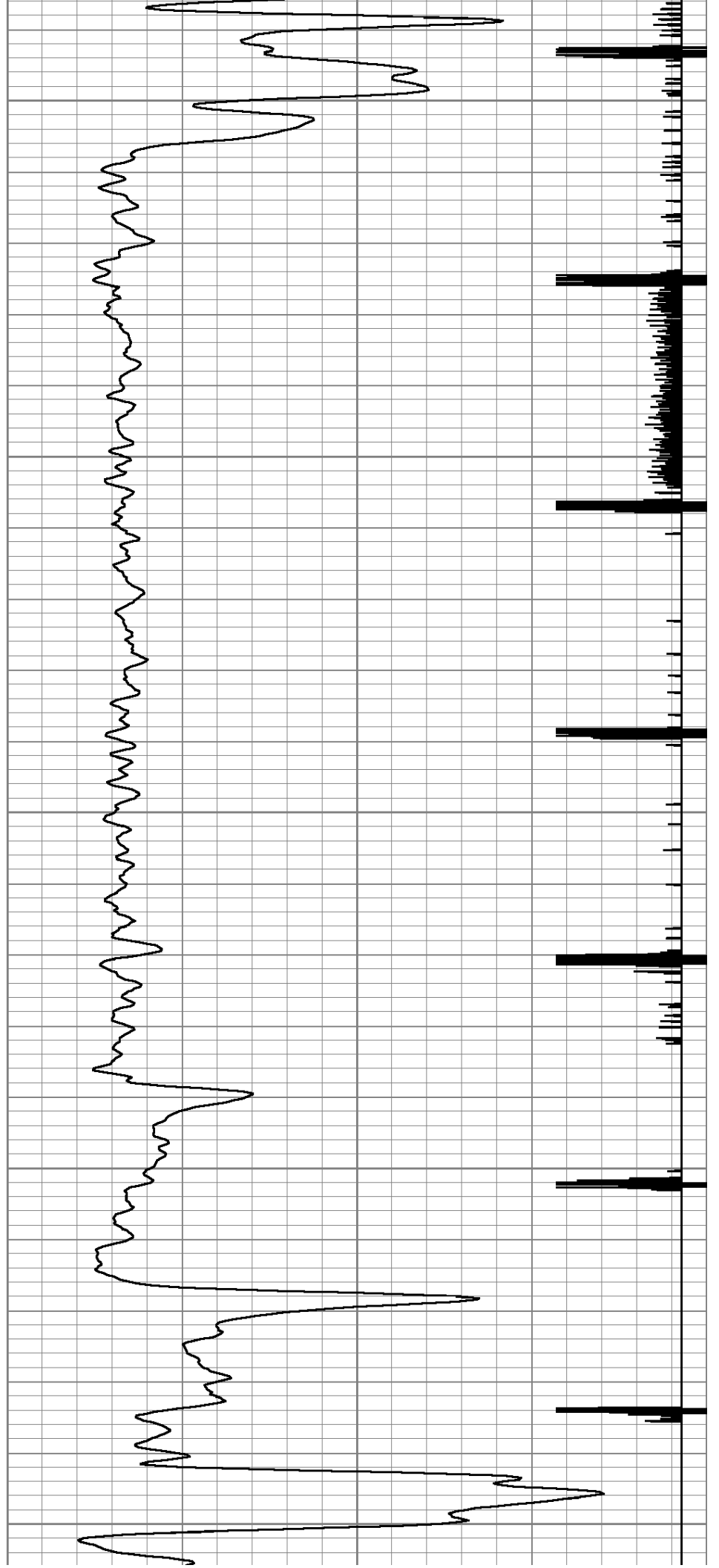
650

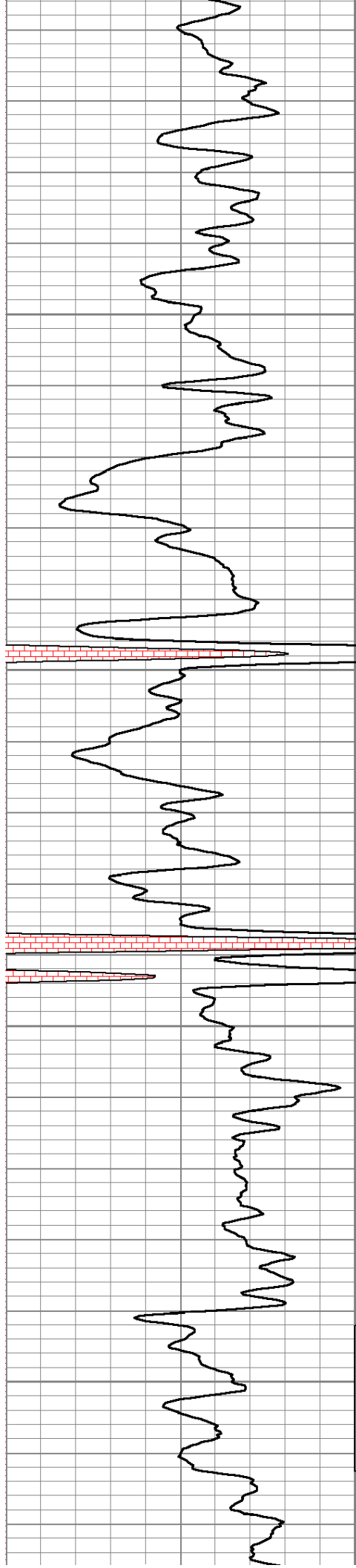
700

750

800

850



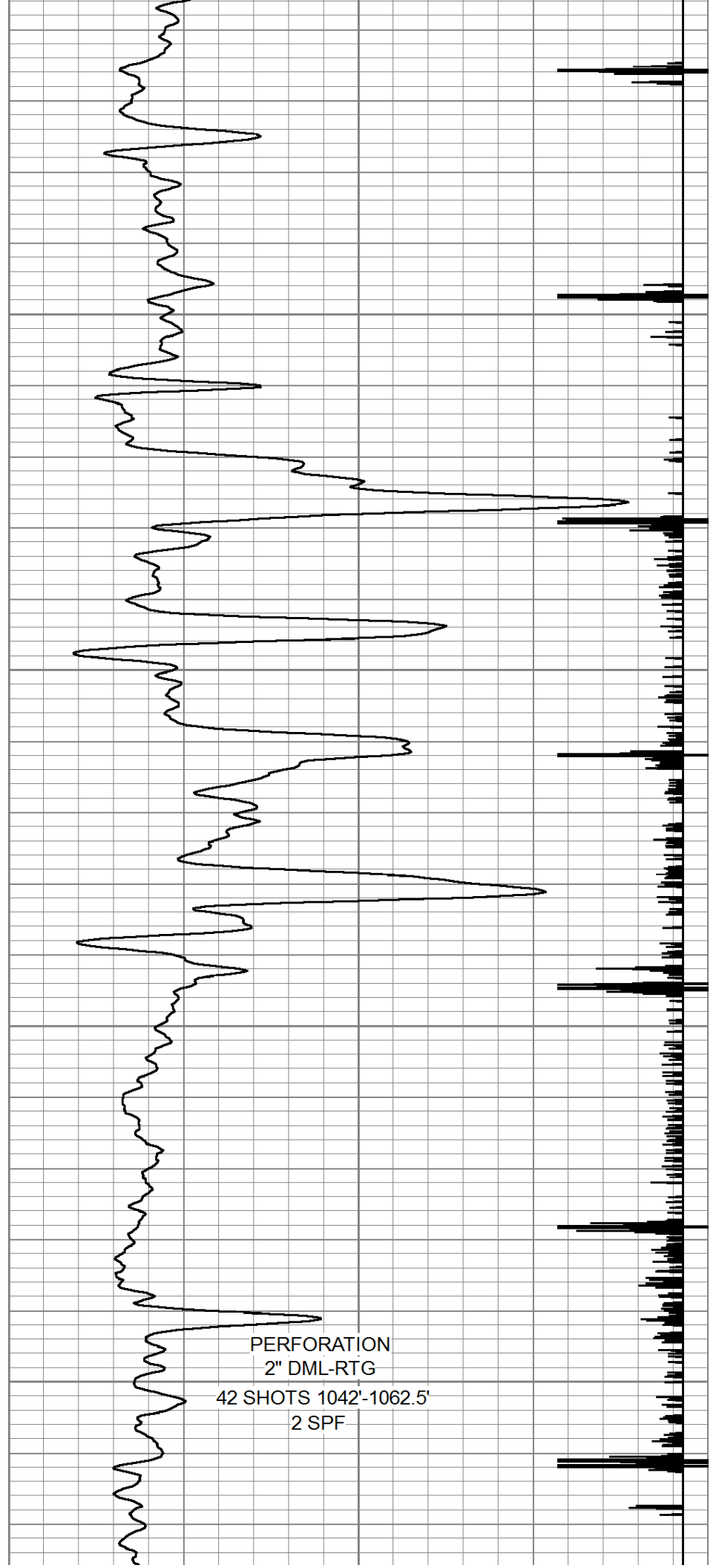


900

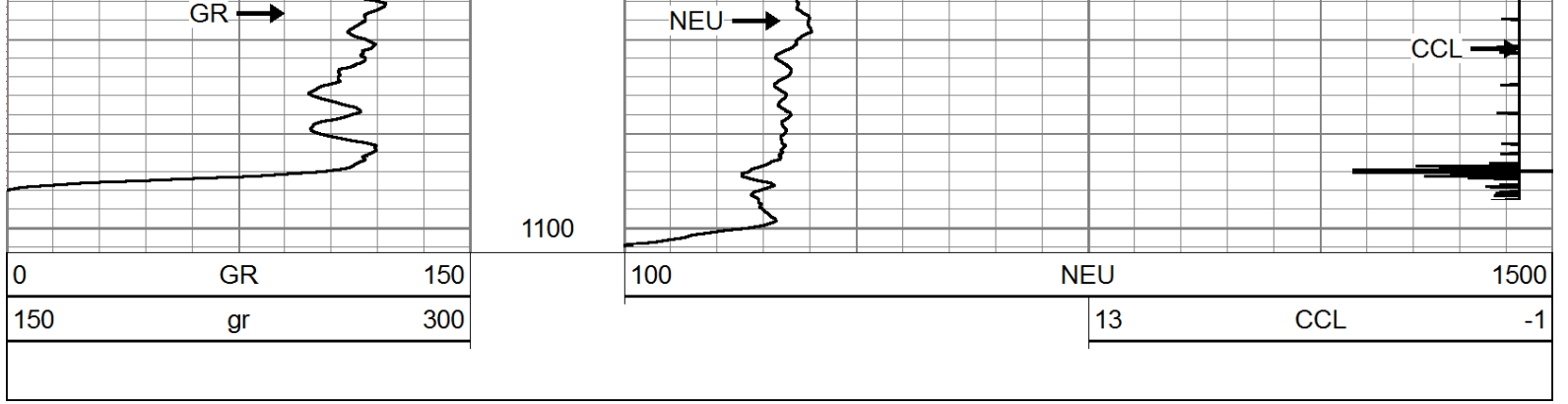
950

1000

1050



PERFORATION  
2" DML-RTG  
42 SHOTS 1042'-1062.5'  
2 SPF



Company	MIDWAY OIL COMPANY
Well	TANNAHILL #I-6
Field	VERNON
County	WOODSON SEC. 4 TWP. 24S RGE. 16E
State	KANSAS
Date	10-24-2014