



**GAMMA RAY
NEUTRON
COMPLETION LOG**

Company **MIDWAY OIL COMPANY**
 Well **TANNAHILL #1-2**
 Field **VERNON**
 County **WOODSON**
 State **KANSAS**

Company **MIDWAY OIL COMPANY**
 Well **TANNAHILL #1-2**
 Field **VERNON**
 County **WOODSON** State **KANSAS**

Location: **API # : 15-207-29062-00-00** Other Services

**560' FSL & 1775' FEL
 NW SE SW SE
 SEC 33 TWP 23S RGE 16E**

Permanent Datum	G.L.	Elevation	1060'EST	Elevation
Log Measured From	G.L.			K.B.
Drilling Measured From	G.L.			D.F.
				G.L. 1060'EST.

Date	10-24-2014		
Run Number	1-NEWWELL		
Depth Driller			
Depth Logger	1116.5'		
Top Log Interval	SURFACE		
Bottom Logged Interval	1116.5'		
Fluid Level	FULL		
Type Fluid	WATER		
Production Casing	2 7/8" @ T.D.	@	@
Max. Recorded Temp.			
Estimated Cement Top			
Calculated Cement Top			
Amount & Type Cement			
Amount & Type Admix			
Drilling Contractor			
Equipment Number	107		
Location			
Recorded By	UDEN, D.		
Witnessed By	LEIS, V.		

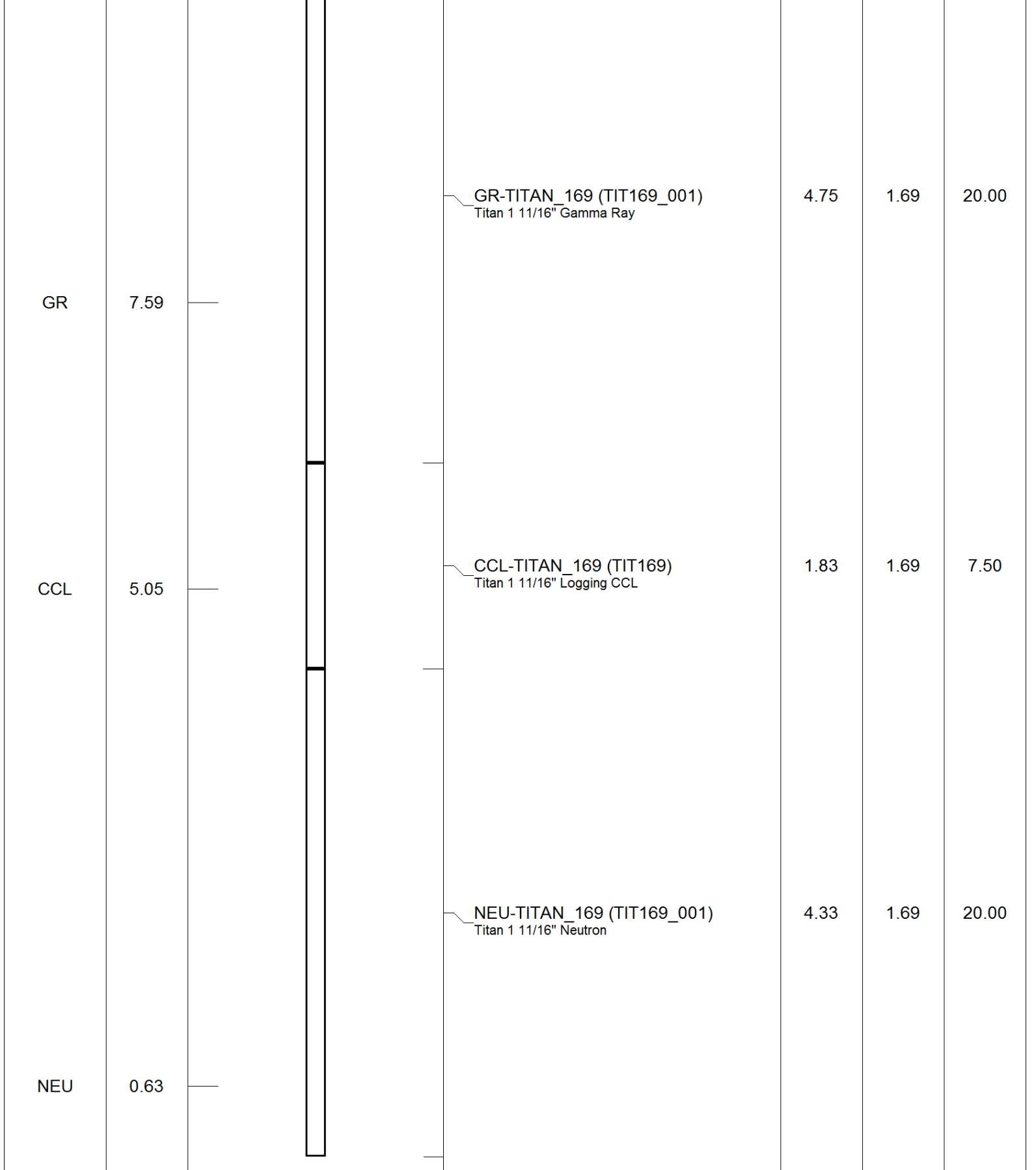
<<< Fold Here >>>

All interpretations are opinions based on inferences from electrical or other measurements and we cannot and do not guarantee the accuracy or correctness of any interpretation, and we shall not, except in the case of gross or willful negligence on our part, be liable or responsible for any loss, costs, damages, or expenses incurred or sustained by anyone resulting from any interpretation made by any of our officers, agents or employees. These interpretations are also subject to our general terms and conditions set out in our current Price Schedule.

Comments

THANK YOU

Sensor	Offset (ft)	Schematic	Description	Len (ft)	OD (in)	Wt (lb)

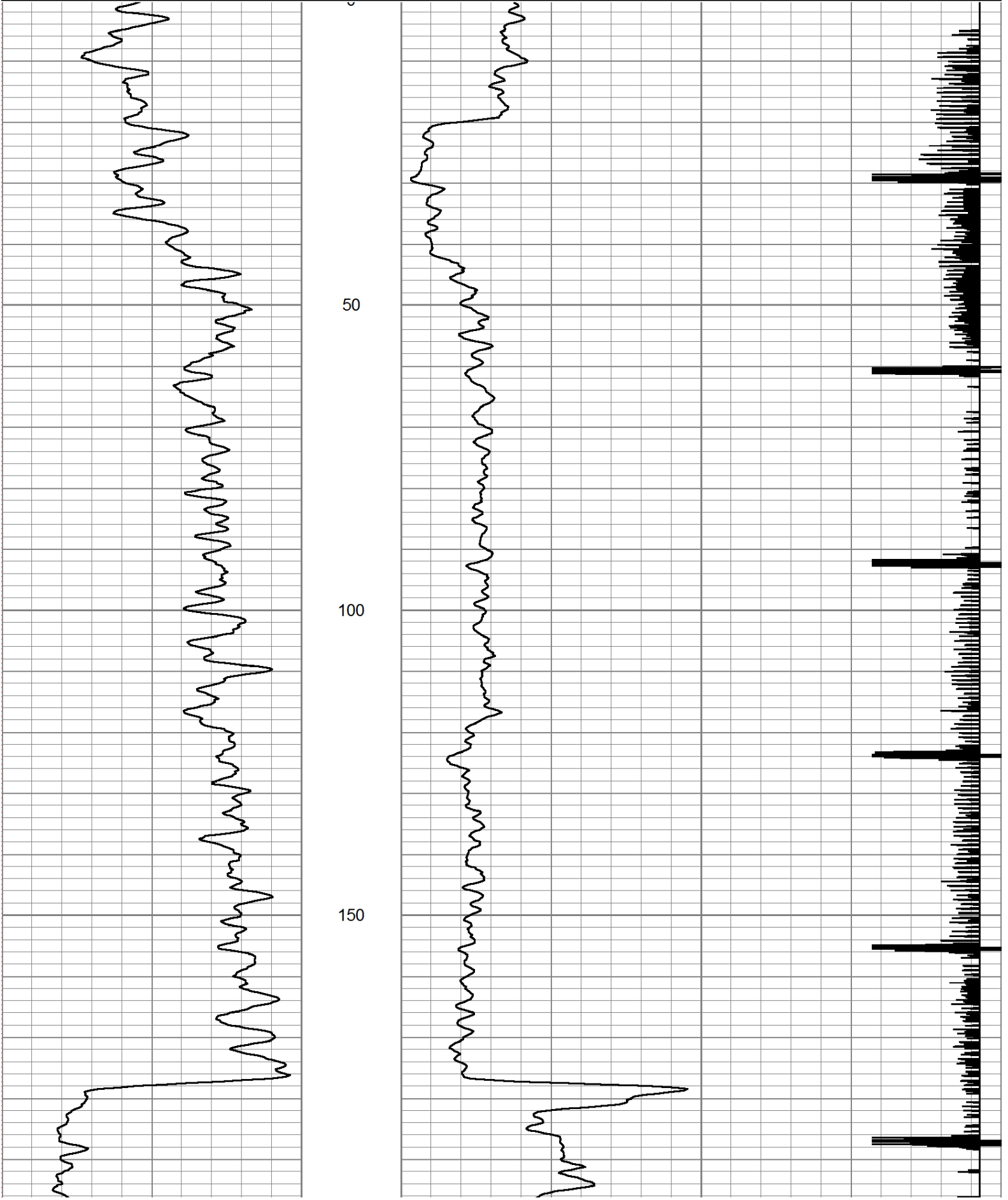


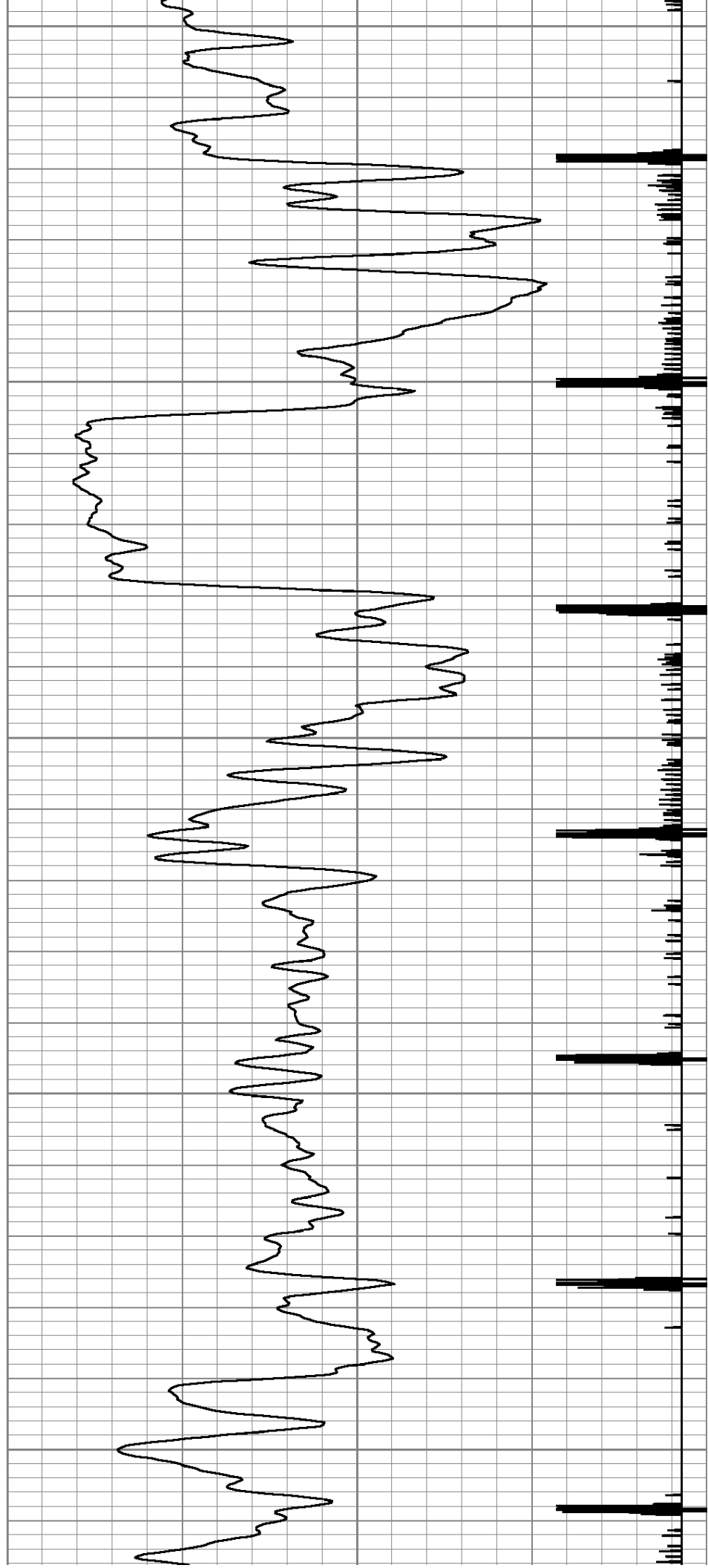
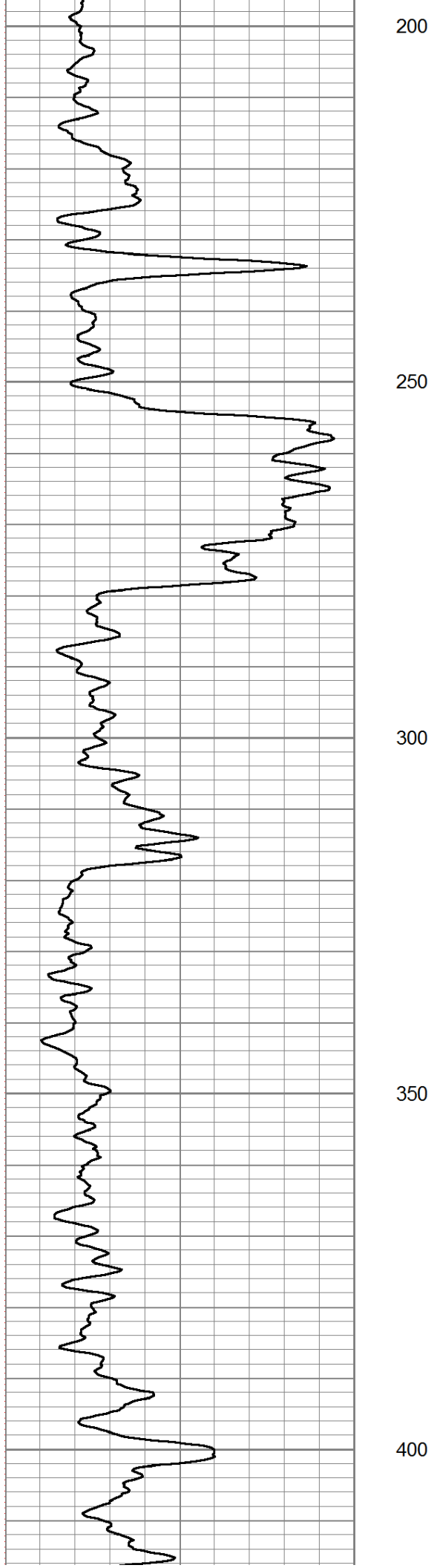
Dataset: tannahill #-2.db: field/well/run1/pass2
 Total Length: 10.92 ft
 Total Weight: 47.50 lb
 O.D.: 1.69 in

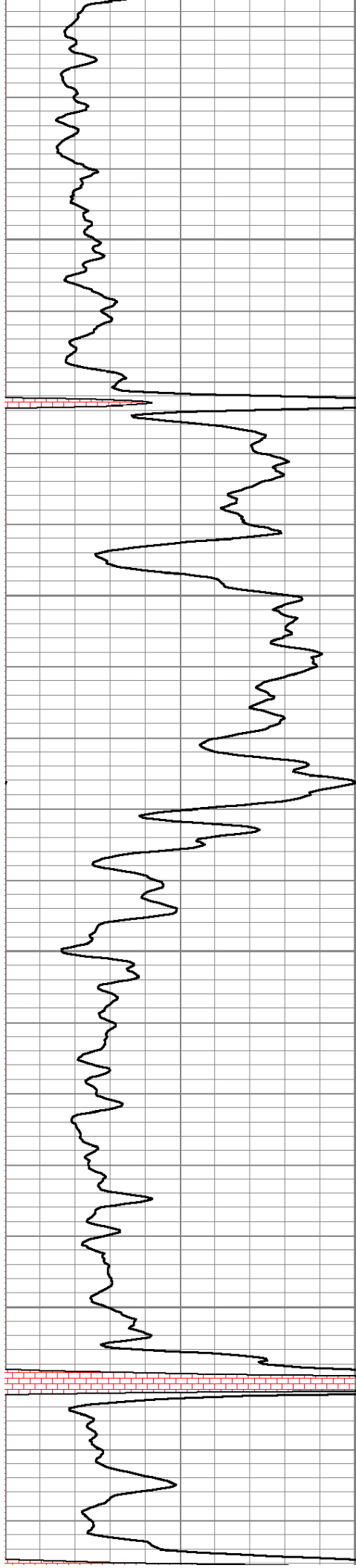
Database File: e:\tannahill #-2.db
 Dataset Pathname: pass2
 Presentation Format: gr-n-ccl

0	GR	150
150	gr	300

100	NEU	1500
13	CCL	-1





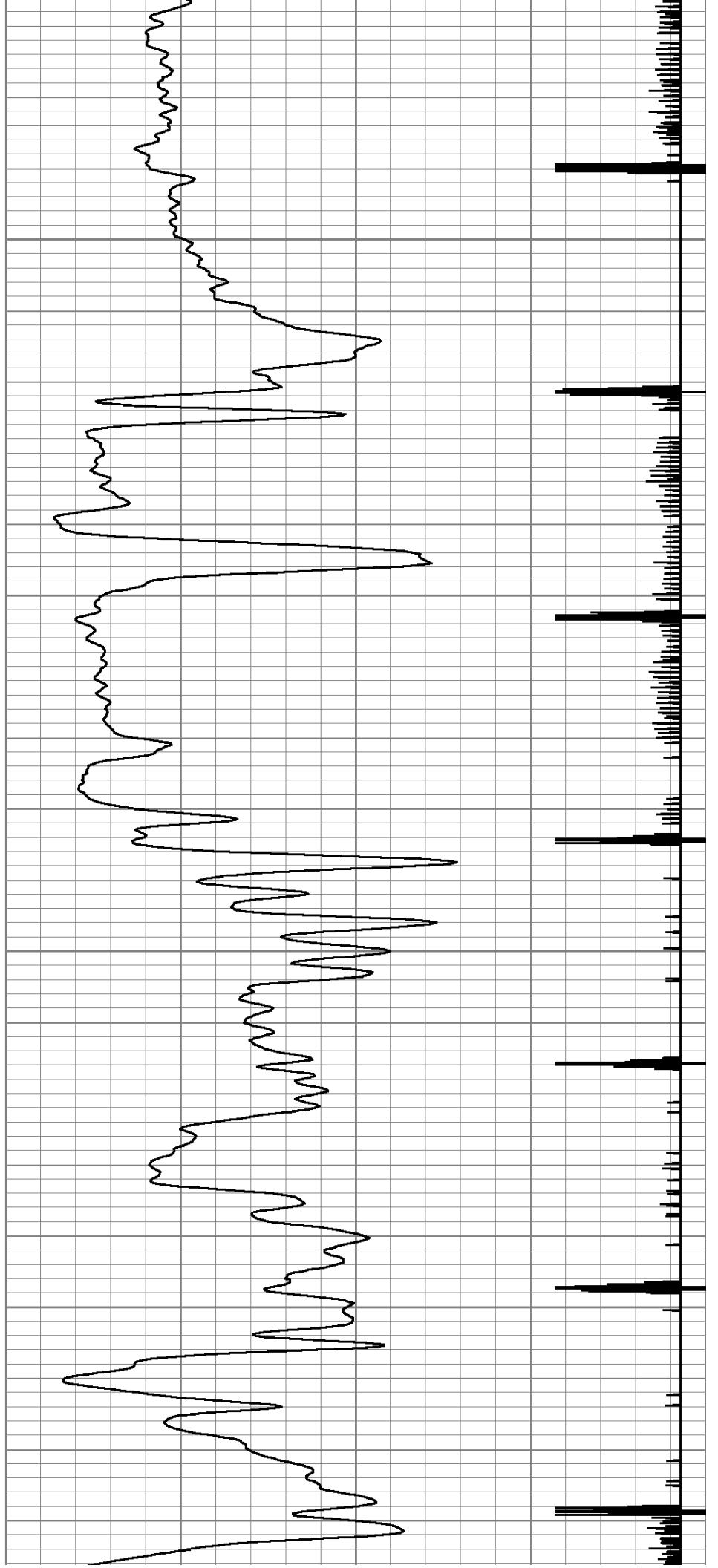


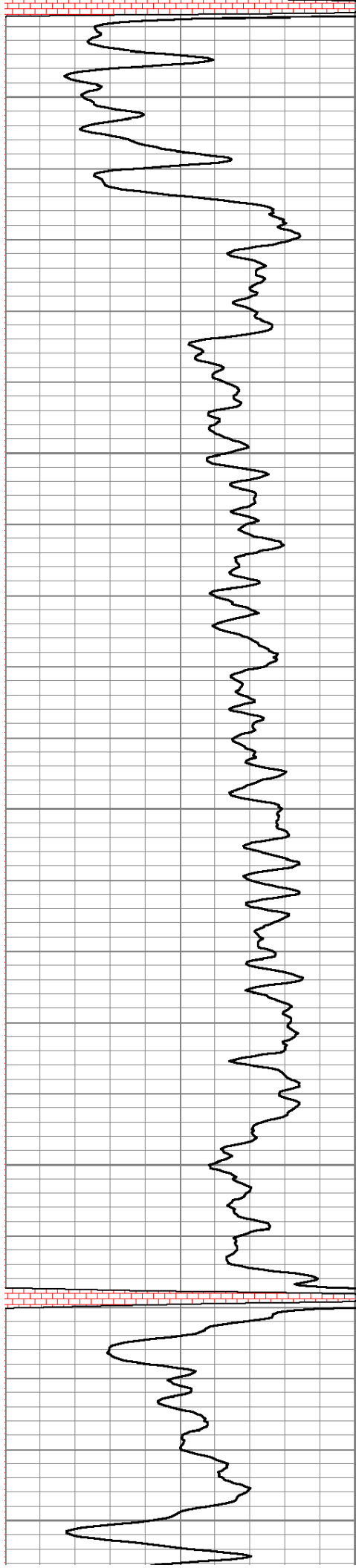
450

500

550

600





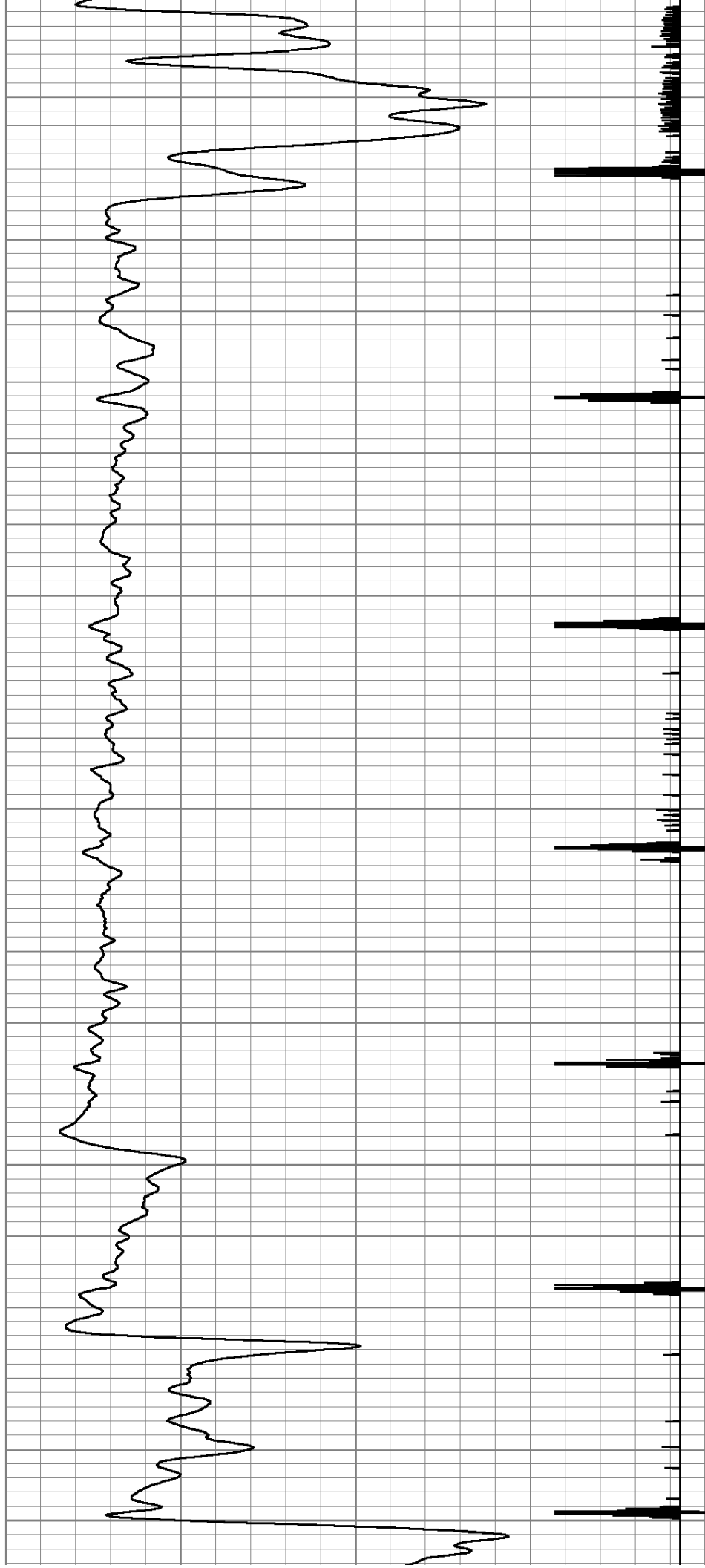
650

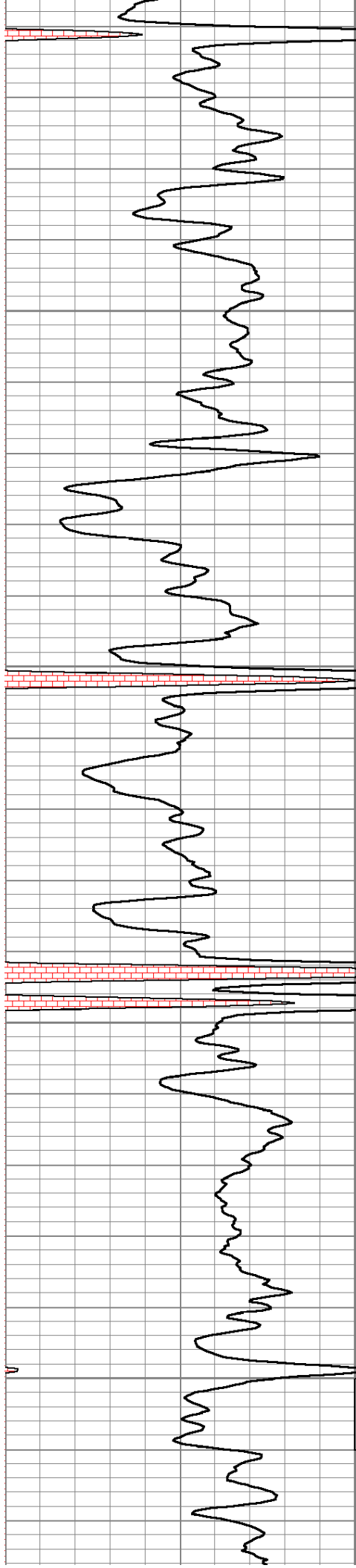
700

750

800

850



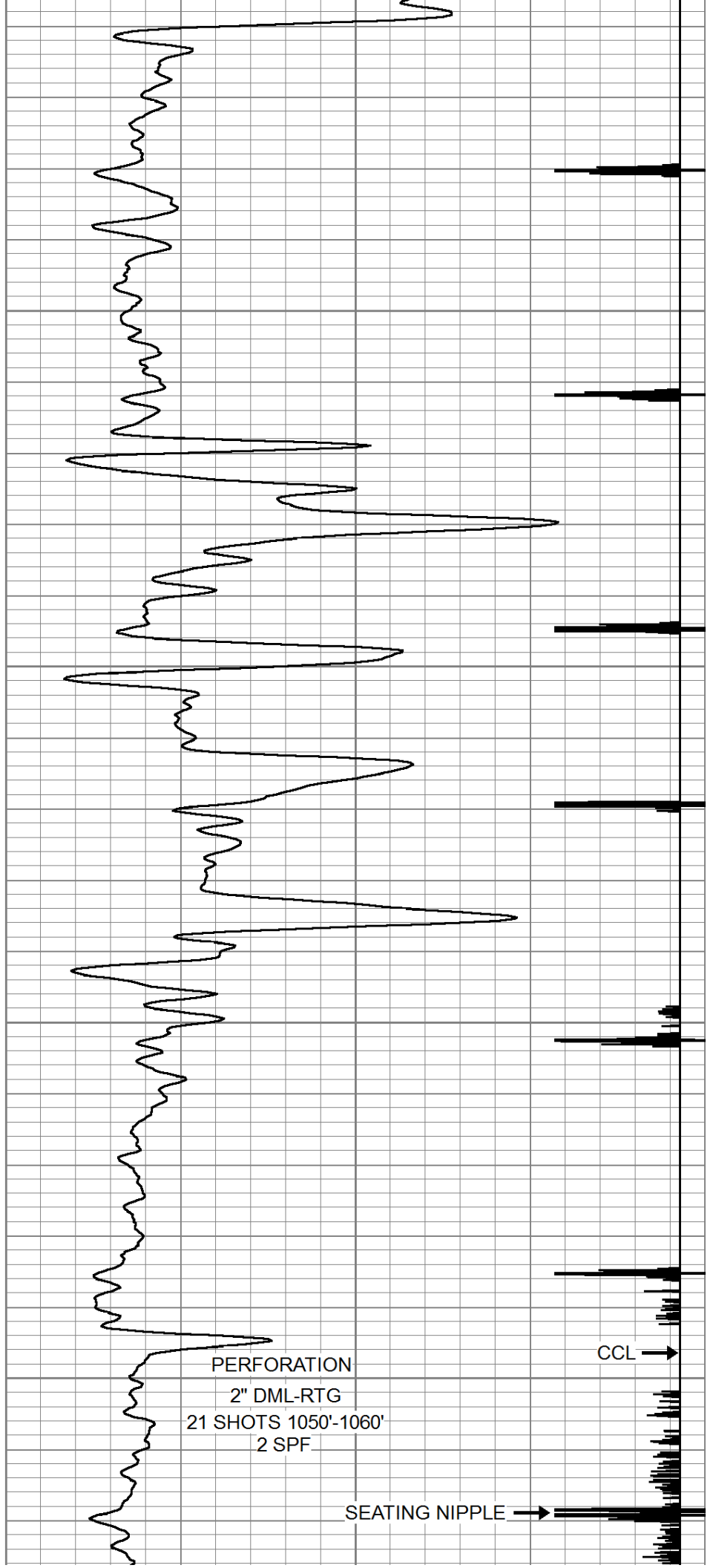
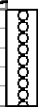


900

950

1000

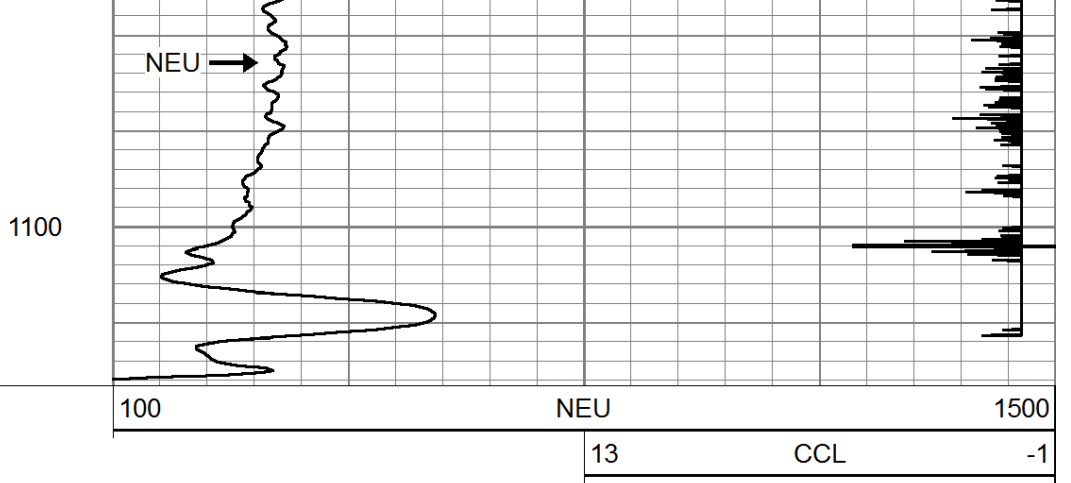
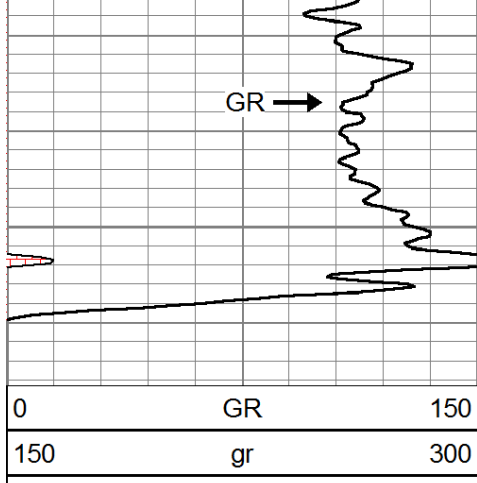
1050



PERFORATION
2" DML-RTG
21 SHOTS 1050'-1060'
2 SPF

CCL →

SEATING NIPPLE →



Company	MIDWAY OIL COMPANY
Well	TANNAHILL #I-2
Field	VERNON
County	WOODSON SEC. 33 TWP. 23S RGE. 16E
State	KANSAS
Date	10-24-2014