



DUAL INDUCTION  
LL3/GR LOG

Company COLT ENERGY, INC.		Company COLT ENERGY, INC.	
Well MURPHEY # MD4		Well MURPHEY # MD4	
Field IOLA		Field IOLA	
County ALLEN		County ALLEN	
State KANSAS		State KANSAS	
Location: API #: 15-001-31172-0000		Other Services	
Permanent Datum NW SE SW NW		CDL/SWN	
Log Measured From 3135' FSL & 890' FWL			
Drilling Measured From SEC 4 TWP 24S RGE 18E		Elevation	
		K.B. ---	
		D.F. ---	
		G.L. 1012'	
Date	12-02-2014		
Run Number	ONE		
Depth Driller	1250'		
Depth Logger	1256'		
Bottom Logged Interval	1254'		
Top Log Interval	SURFACE		
Casing Driller	8 5/8" @ 42.5'		
Casing Logger	8 5/8" @ 42.5'		
Bit Size	6 3/4"		
Type Fluid in Hole	WATER/MUD		
Density / Viscosity			
pH / Fluid Loss			
Source of Sample			
Rm @ Meas. Temp			
Rmf @ Meas. Temp			
Rmc @ Meas. Temp			
Source of Rmf / Rmc			
Rm @ BHT			
Time Circulation Stopped			
Time Logger on Bottom			
Maximum Recorded Temperature			
Equipment Number	OW2		
Location	HOMINY, OK		
Recorded By	LOWERY		
Witnessed By	MS. BALLARD		

<<< Fold Here >>>

All interpretations are opinions based on inferences from electrical or other measurements and we cannot and do not guarantee the accuracy or correctness of any interpretation, and we shall not, except in the case of gross or willful negligence on our part, be liable or responsible for any loss, costs, damages, or expenses incurred or sustained by anyone resulting from any interpretation made by any of our officers, agents or employees. These interpretations are also subject to our general terms and conditions set out in our current Price Schedule.

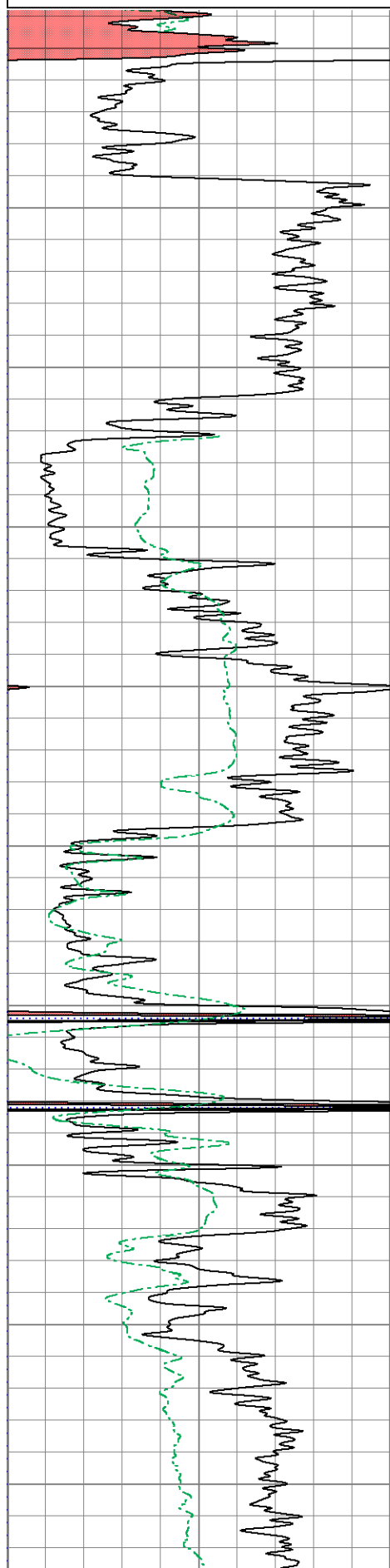
Comments

OW2-8774

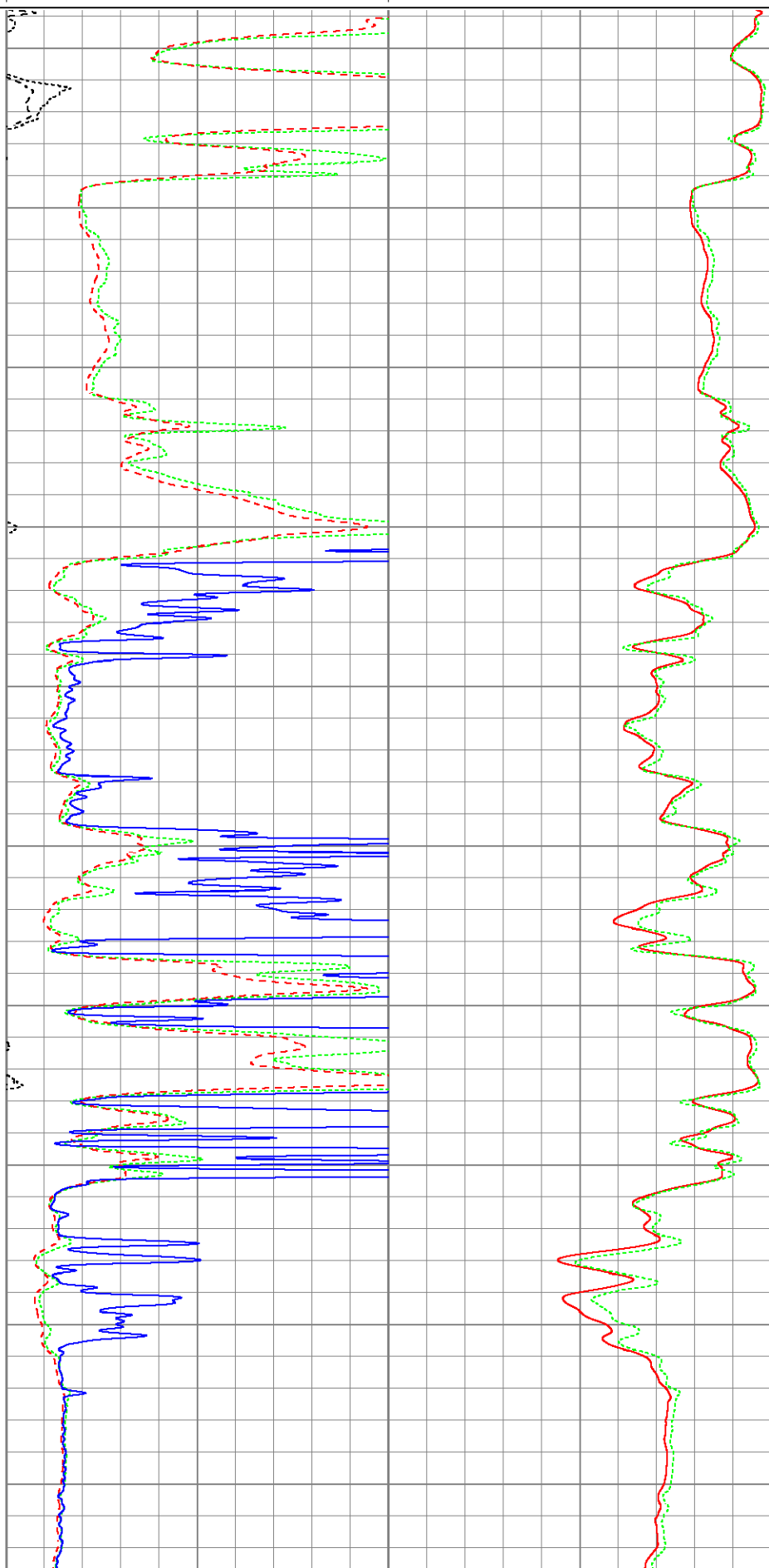
CREW : SHAMBLES

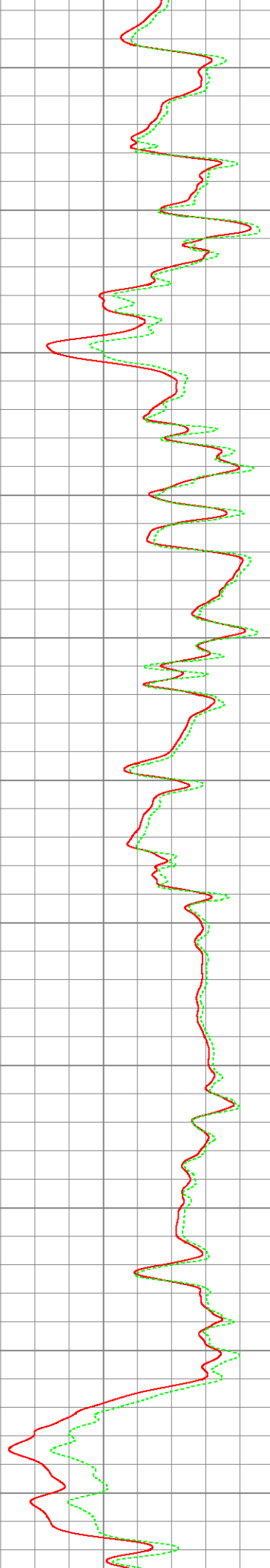
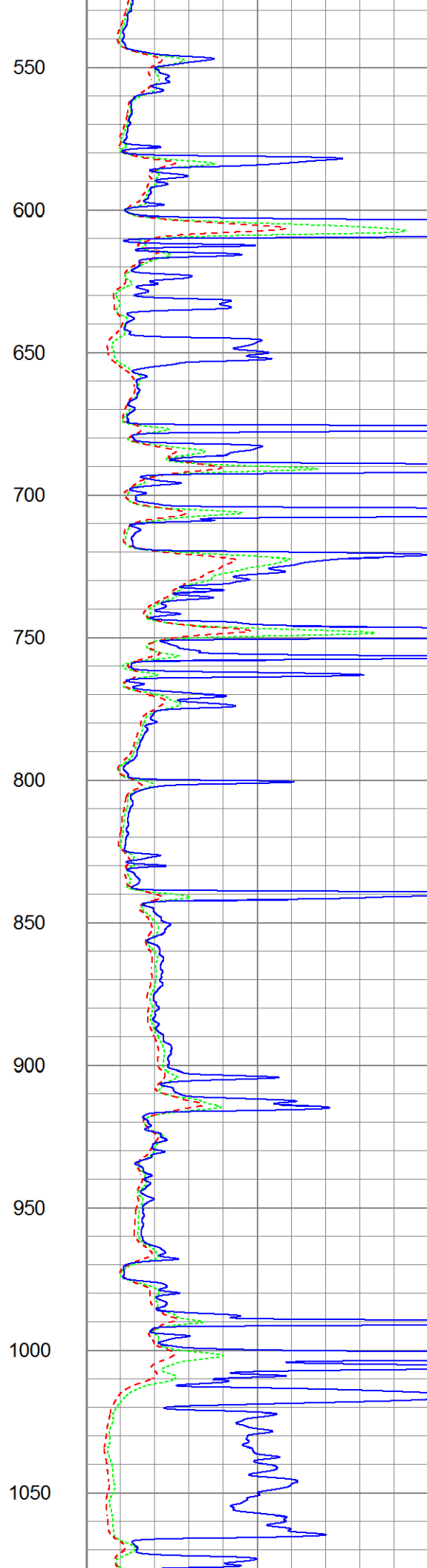
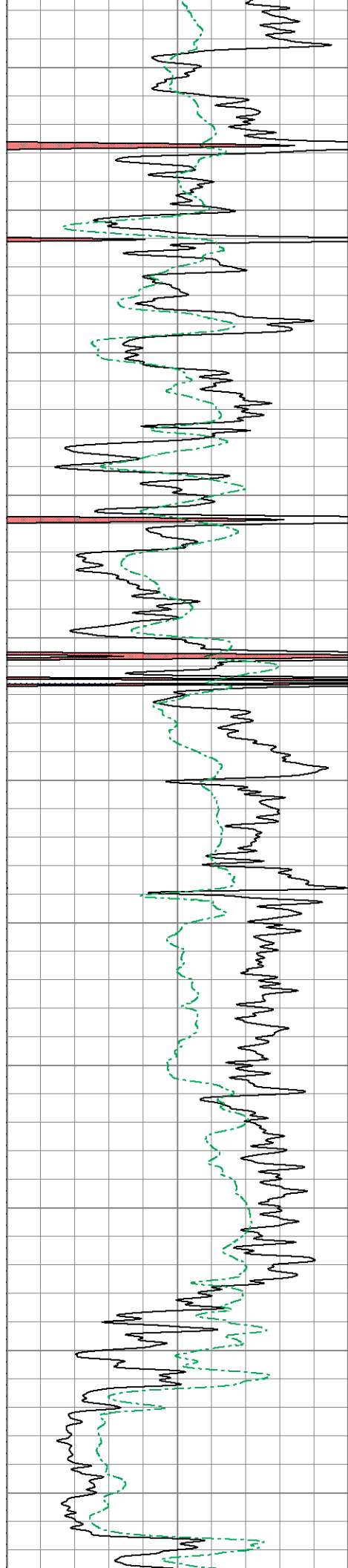
Database File ow2-8774 colt energy.db  
Dataset Pathname DIL/pass1.4  
Presentation Format dil2mdcol  
Dataset Creation Tue Dec 02 18:15:59 2014  
Charted by Depth in Feet scaled 1:600

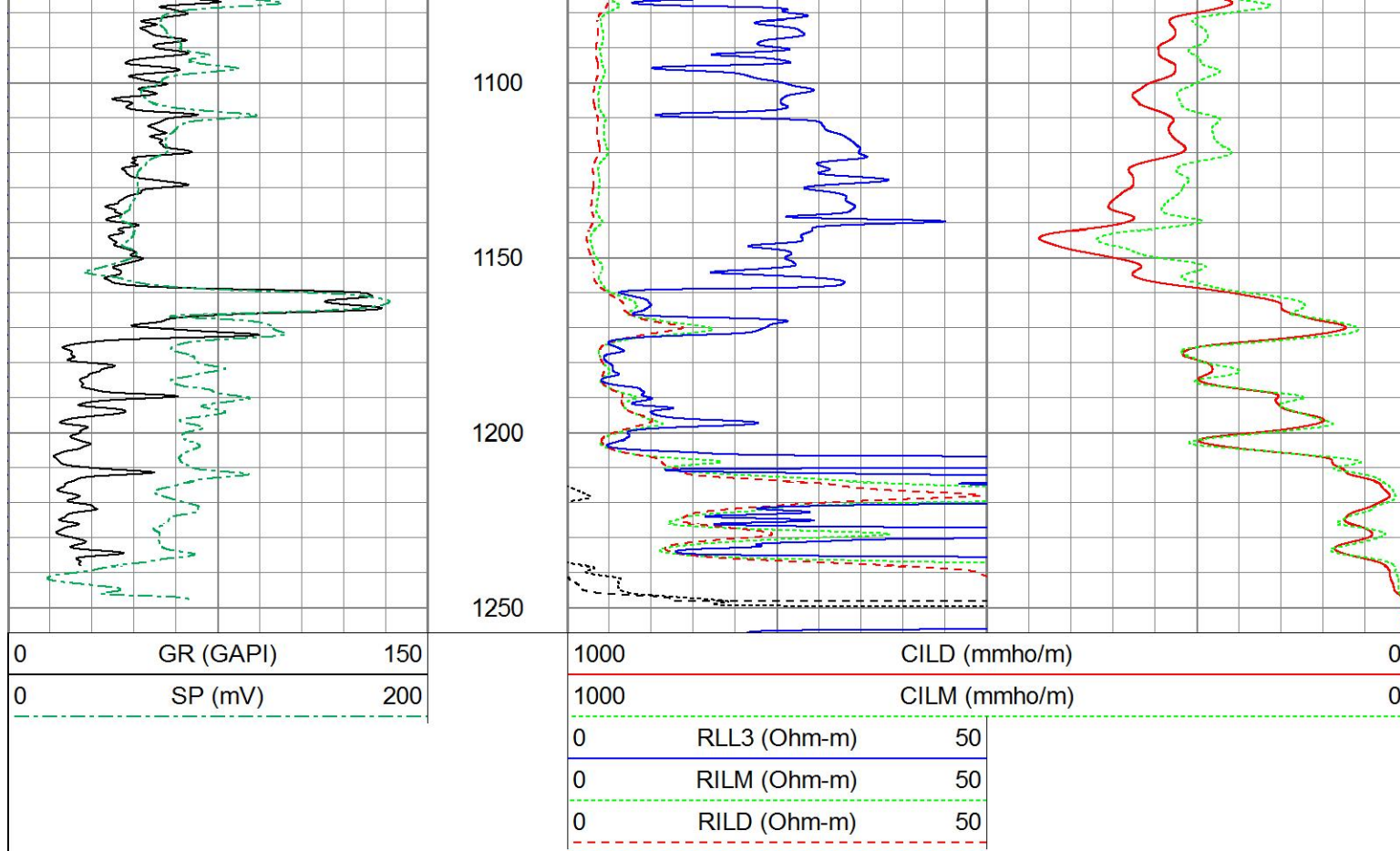
0	GR (GAPI)	150
0	SP (mV)	200



1000	CILD (mmho/m)	0
0	RLL3 (Ohm-m)	50
0	RILM (Ohm-m)	50
0	RILD (Ohm-m)	50



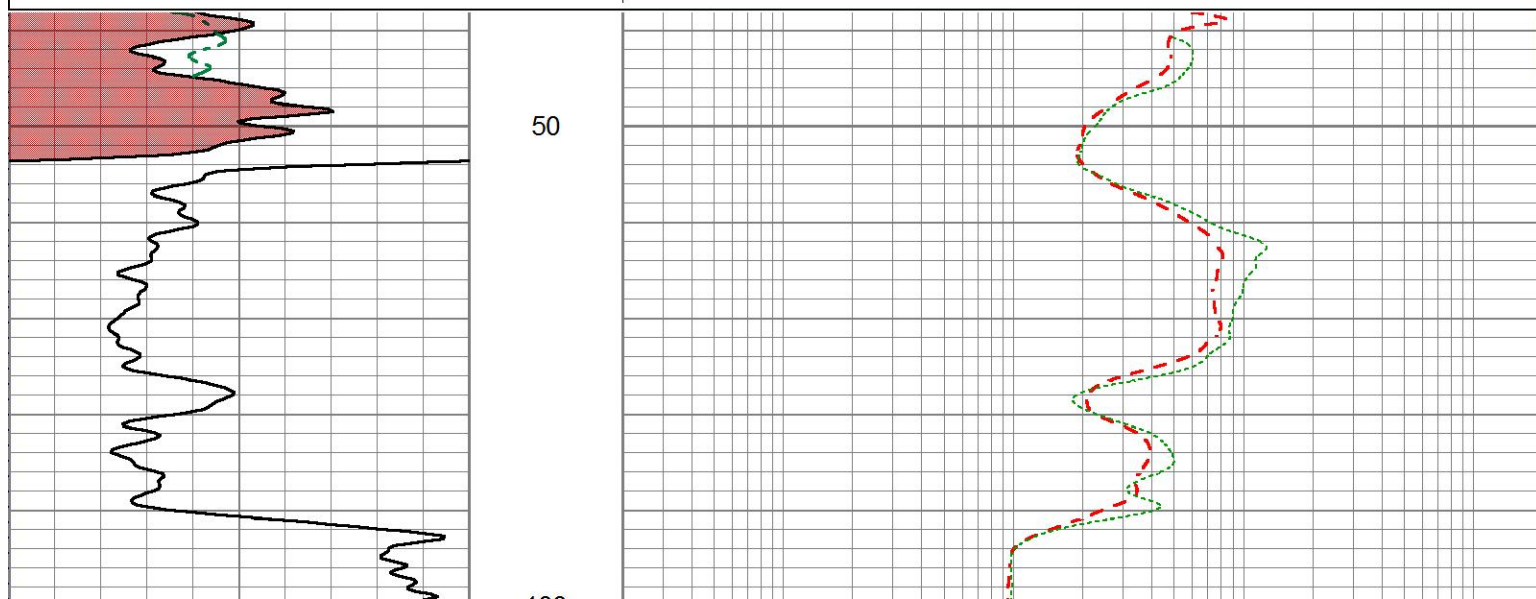


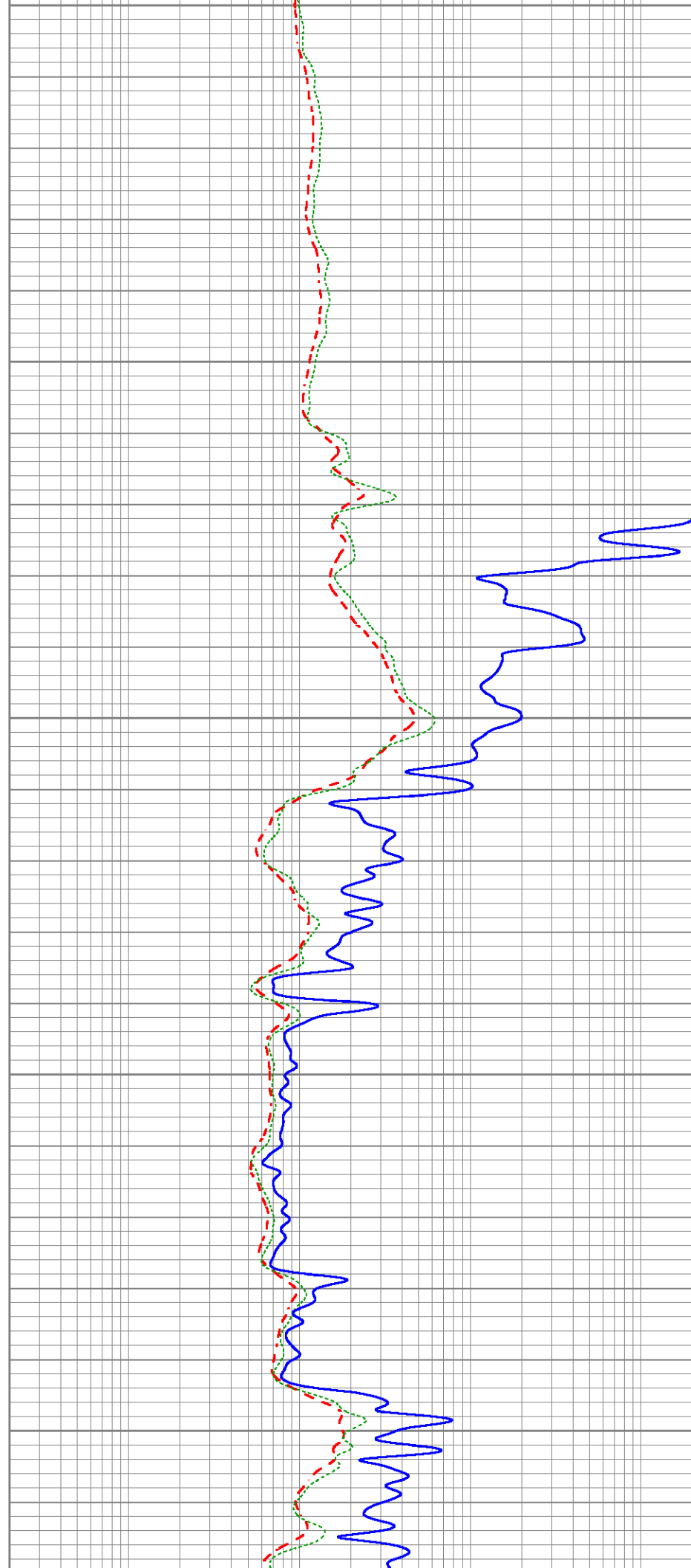
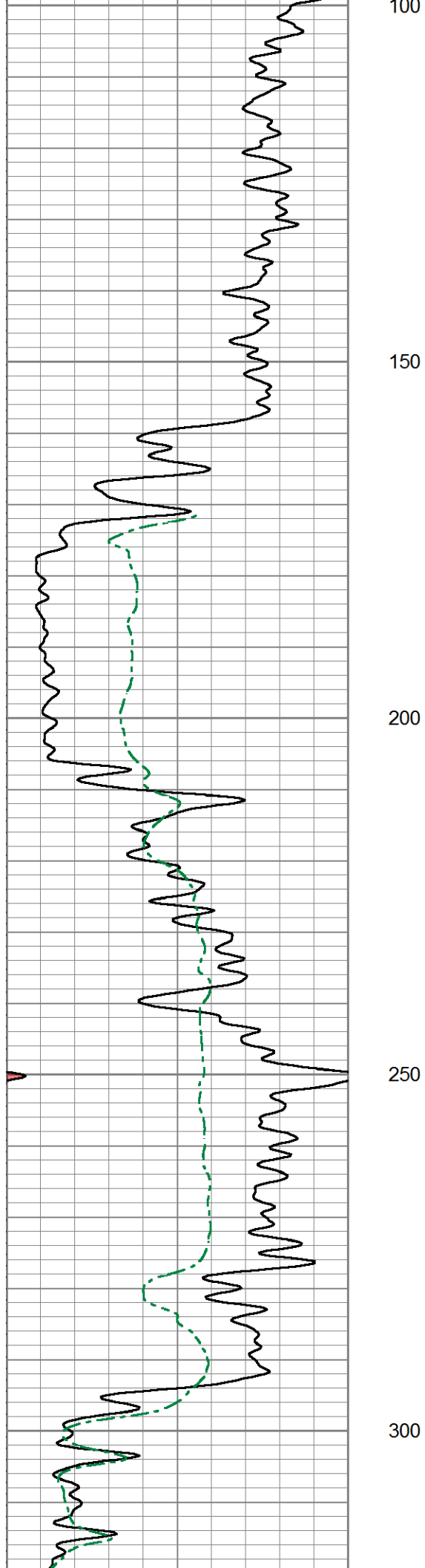


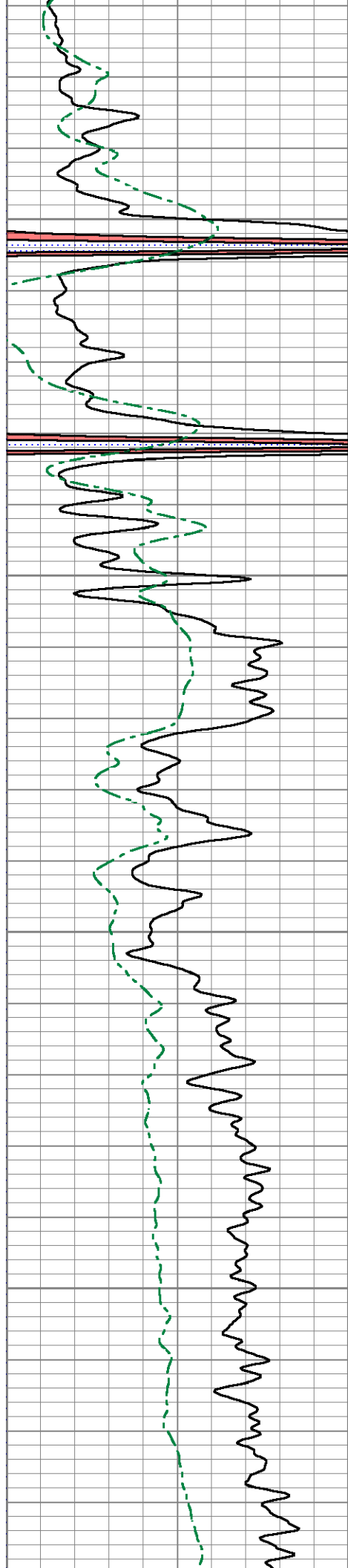
# 5" DIL SECTION

Database File ow2-8774 colt energy.db  
 Dataset Pathname DIL/pass1.3  
 Presentation Format dil5mdcol  
 Dataset Creation Tue Dec 02 18:15:53 2014  
 Charted by Depth in Feet scaled 1:240

0	Gamma Ray (GAPI)	150	0.2	Deep Resistivity (Ohm-m)	2000
0	SP (mV)	200	0.2	Medium Resistivity (Ohm-m)	2000
			0.2	Shallow Resistivity (Ohm-m)	2000





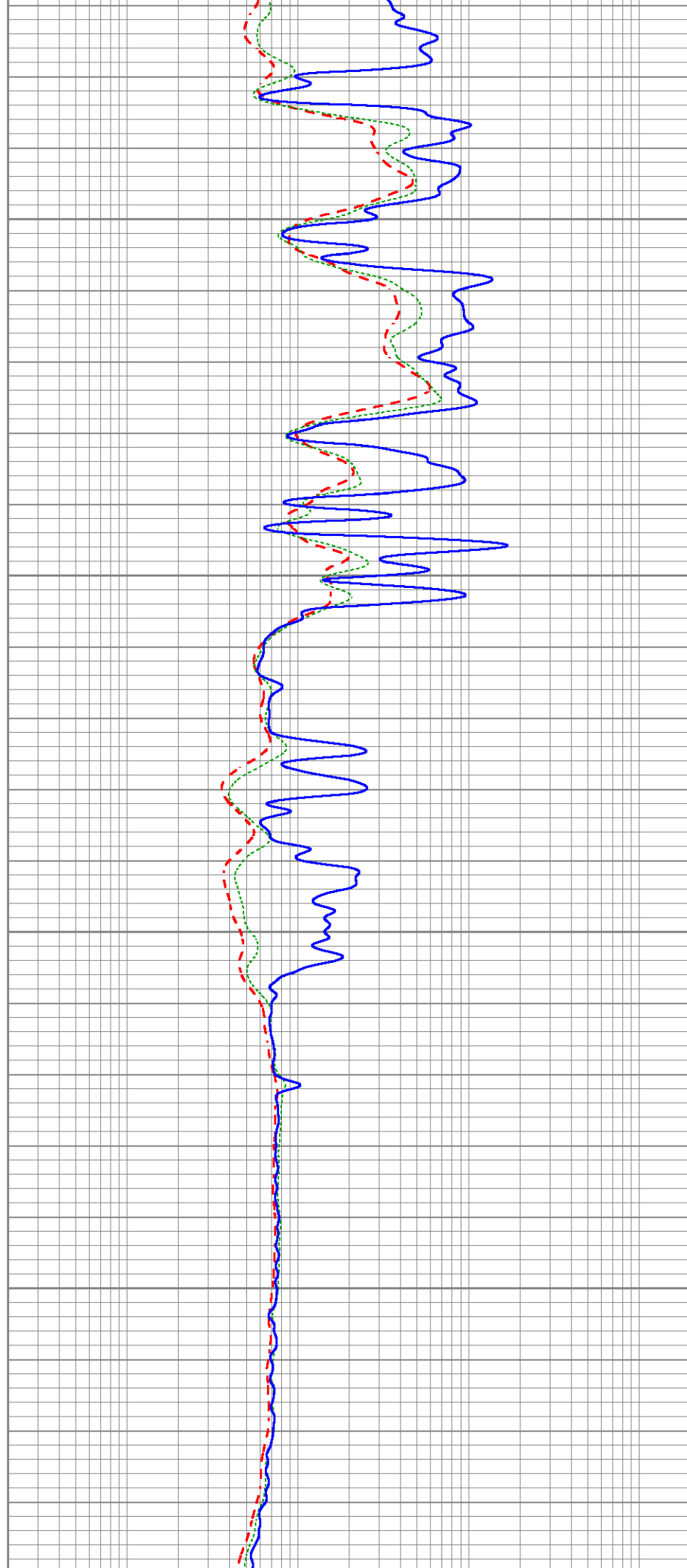


350

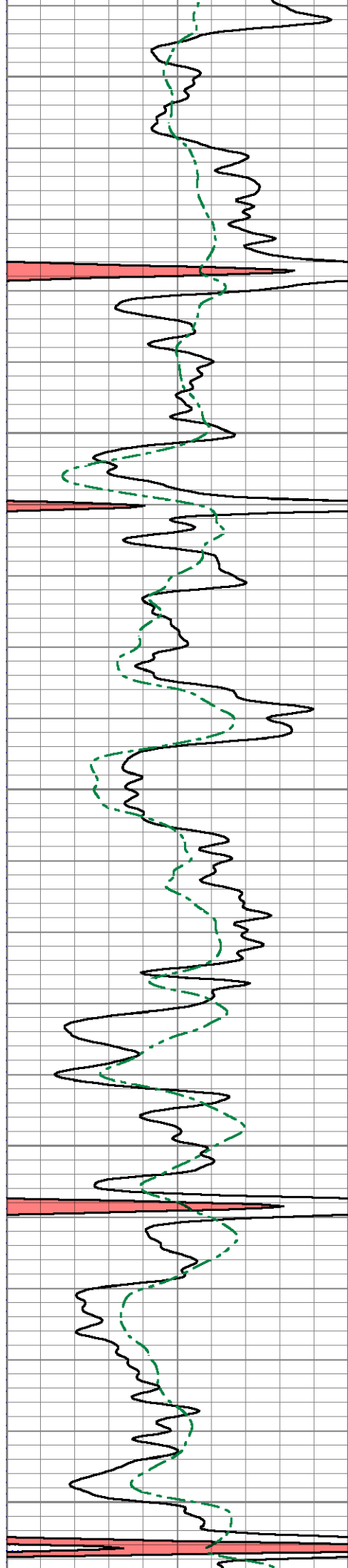
400

450

500







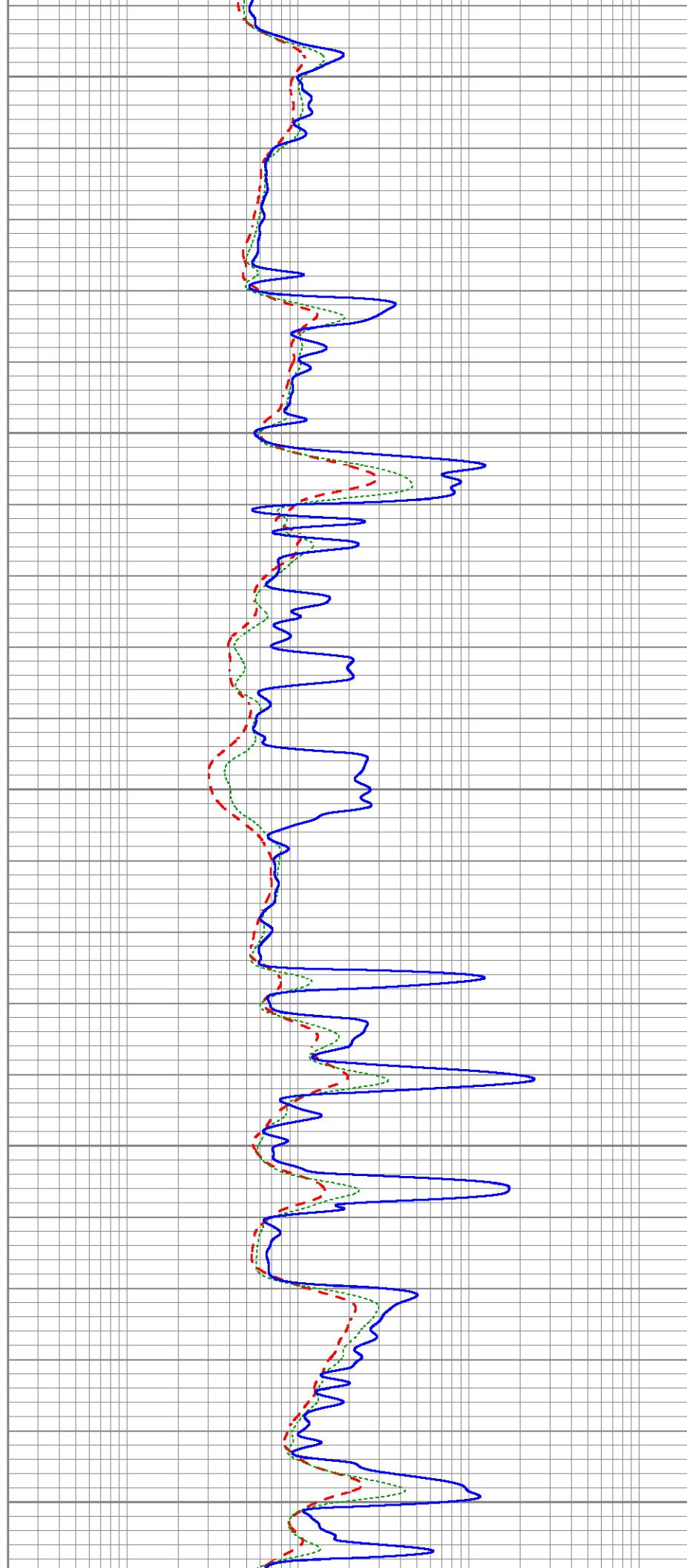
550

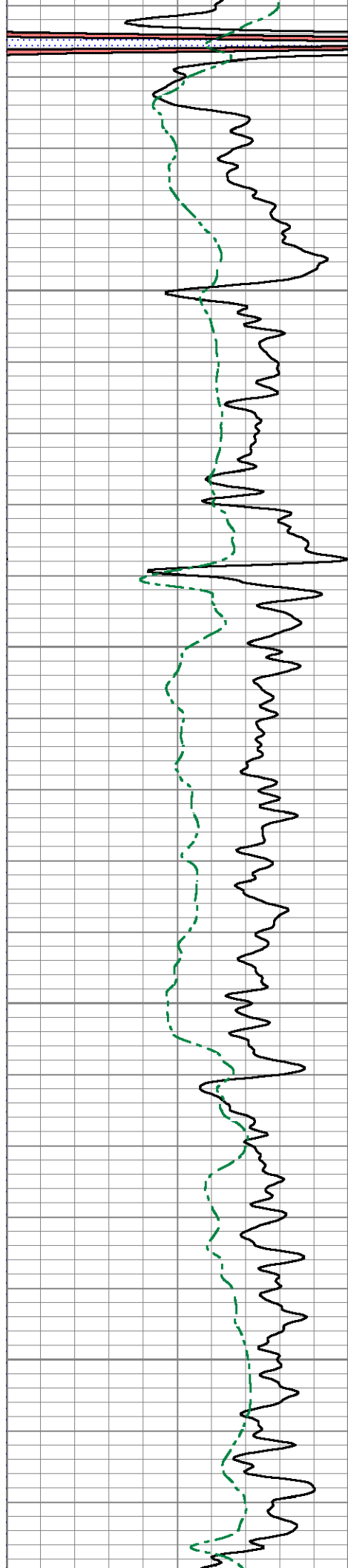
600

650

700

750



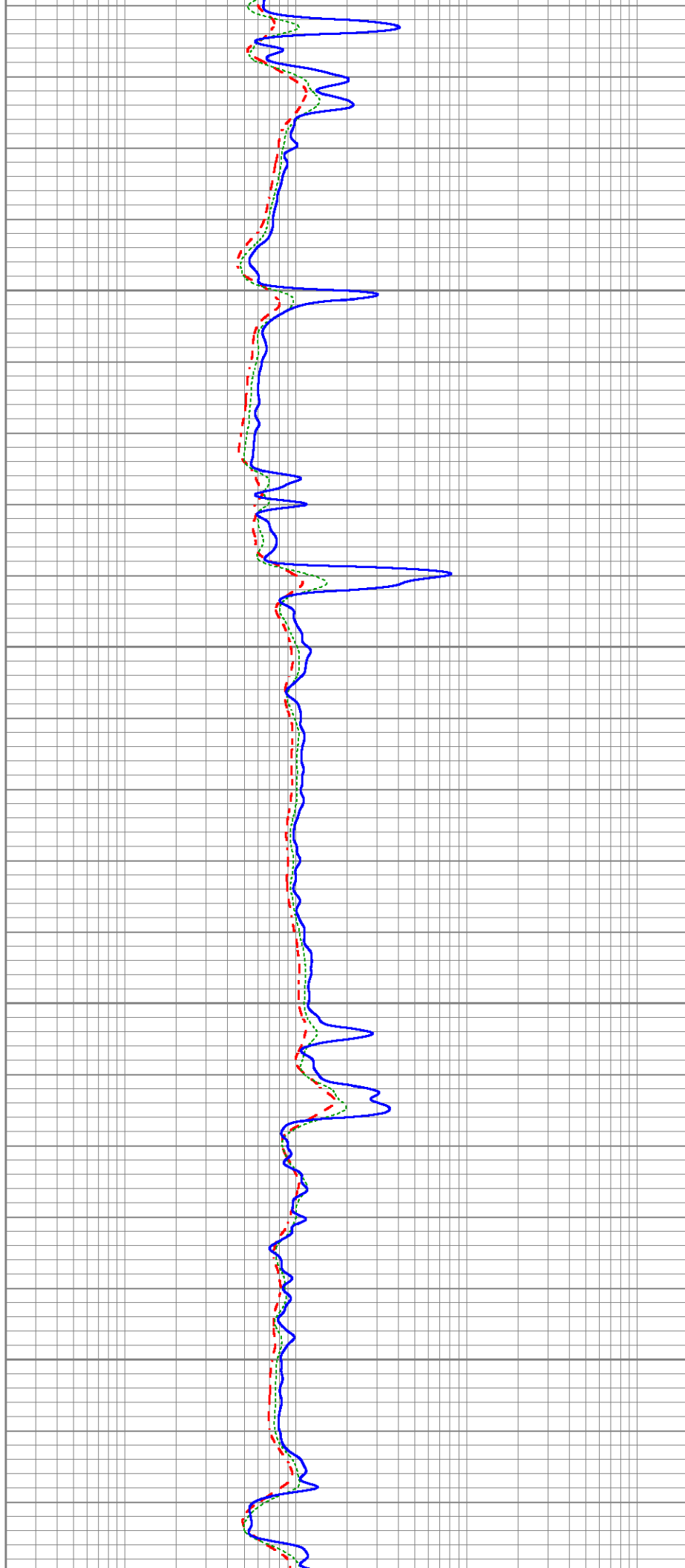


800

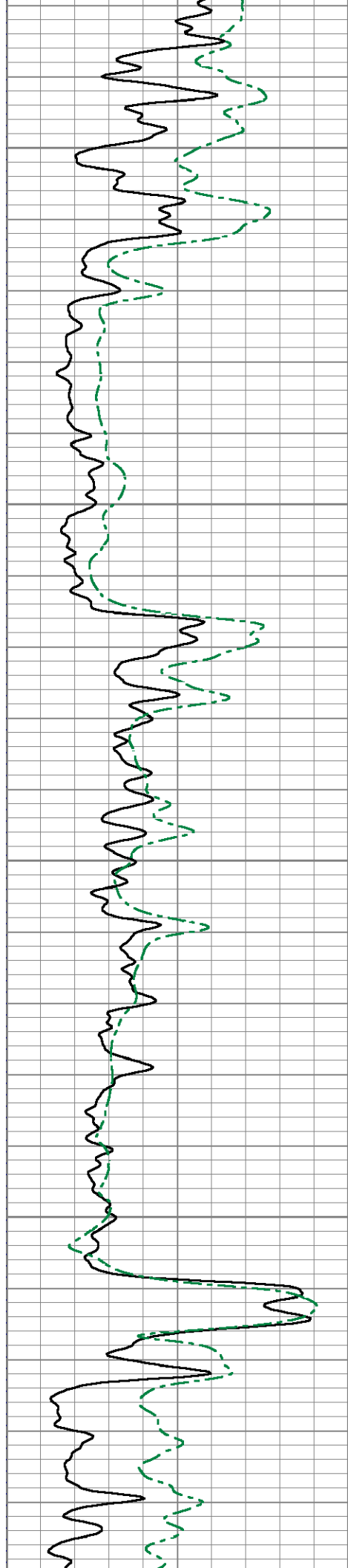
850

900

950







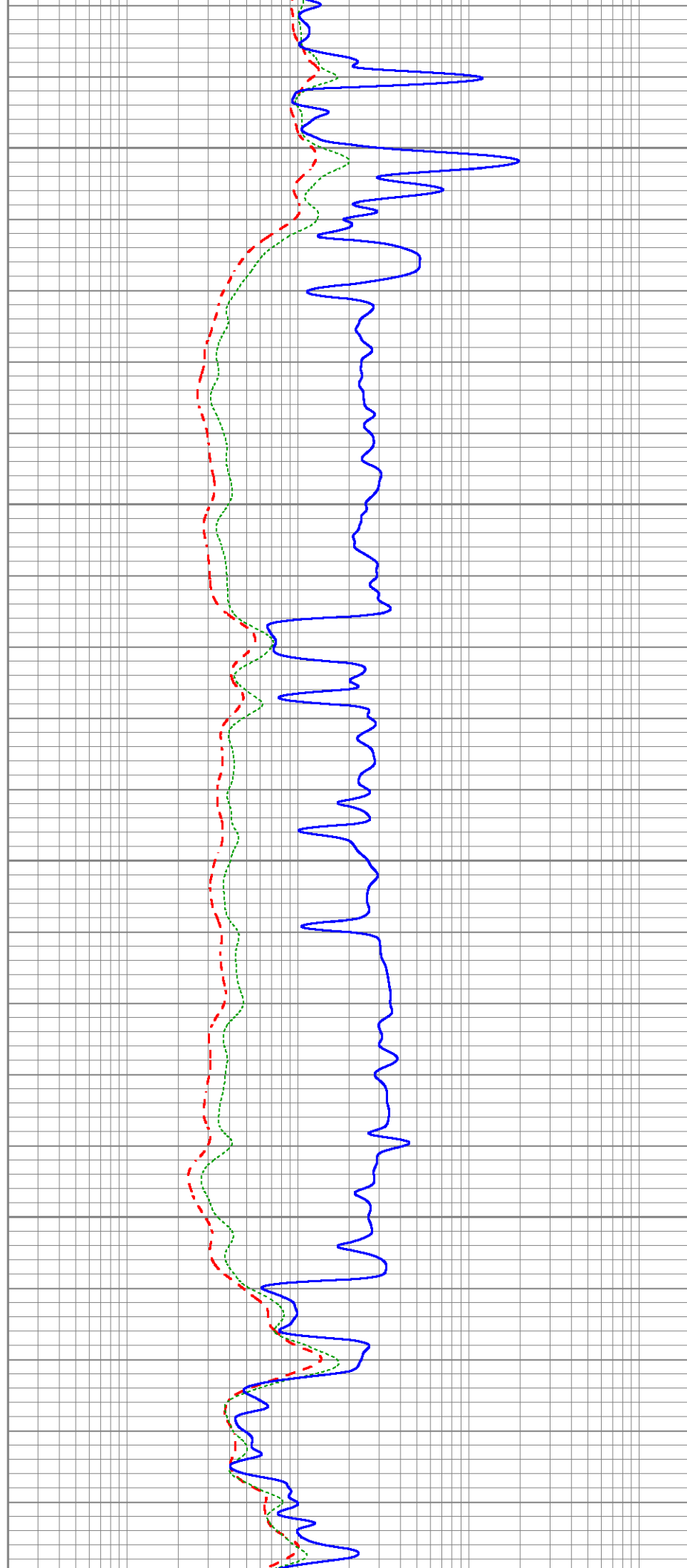
1000

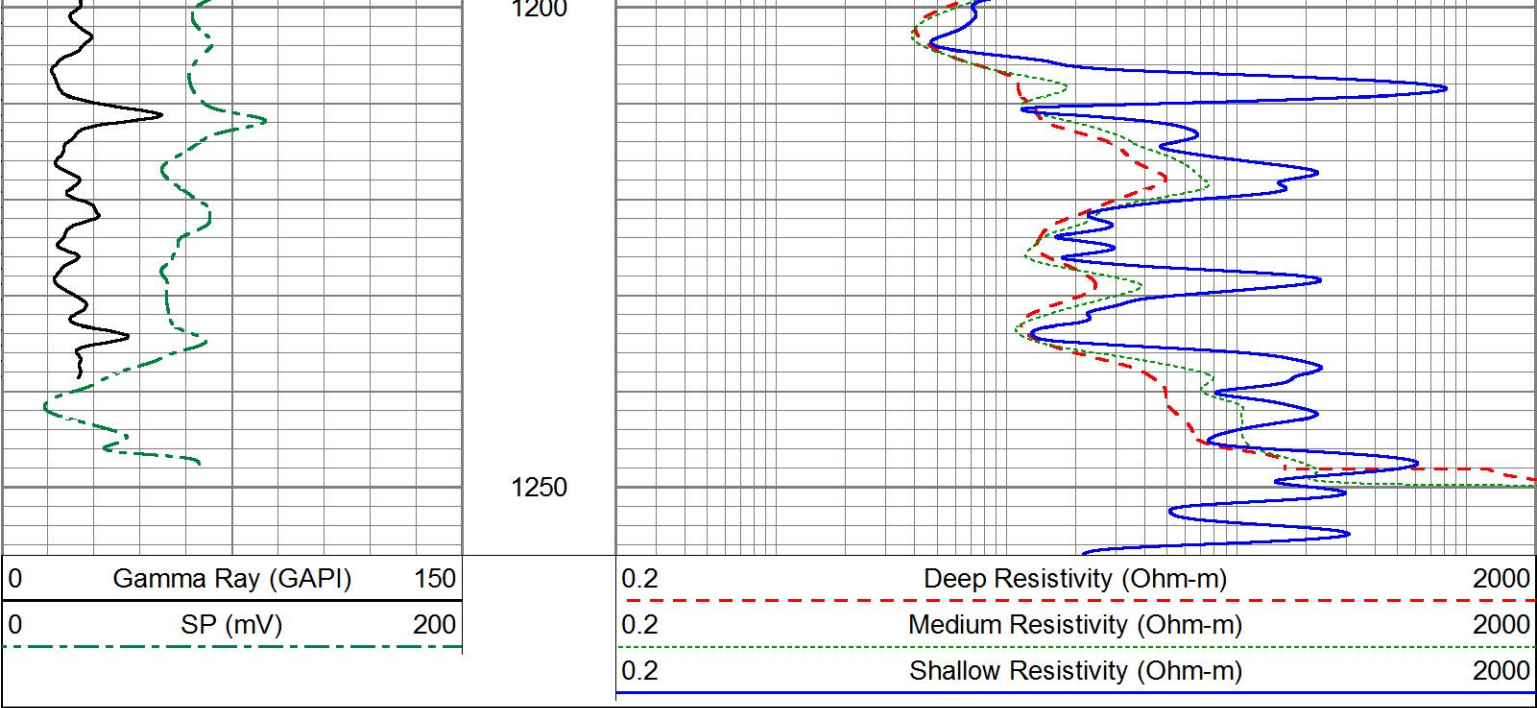
1050

1100

1150

1200





Sensor	Offset (ft)	Schematic	Description	Length (ft)	O.D. (in)	Weight (lb)
			Cable-CableHead Isulation Sub	1.42	3.00	20.00
CILD SP	10.92 10.42		DIL-GEAR (159) Dual Induction Electrical Log	21.36	4.00	345.00
CILM	7.00					
RLL3	1.67					

Dataset: ow2-8774 colt energy.db: field/well/DIL/pass1

Total length: 22.78 ft

Total weight: 365.00 lb

Total weight.	365.00 lb
O.D.:	4.00 in