



**COMPENSATED DENSITY
SIDEWALL NEUTRON LOG**

Company **COLT ENERGY, INC.**
 Well **MURPHEY # MD4**
 Field **IOLA**
 County **ALLEN** State **KANSAS**

Location: **API #: 15-001-31172-0000**
NW SE SW NW
3135' FSL & 890' FWL
SEC 4 TWP 24S RGE 18E

Permanent Datum **GL** Elevation **1012'**
 Log Measured From **GL**
 Drilling Measured From **GL**

Other Services **DIL**
 Elevation **K.B. ---
D.F. ---
G.L. 1012'**

Date	12-02-2014
Run Number	ONE
Depth Driller	1250'
Depth Logger	1256'
Bottom Logged Interval	1254'
Top Log Interval	SURFACE
Casing Driller	8 5/8" @ 42.5'
Casing Logger	8 5/8" @ 42.5'
Bit Size	6 3/4"
Type Fluid in Hole	WATER/MUD
Density / Viscosity	
pH / Fluid Loss	
Source of Sample	
Rm @ Meas. Temp	
Rmf @ Meas. Temp	
Rmc @ Meas. Temp	
Source of Rmf / Rmc	
Rm @ BHT	
Time Circulation Stopped	
Time Logger on Bottom	
Maximum Recorded Temperature	
Equipment Number	OW2
Location	HOMINY, OK
Recorded By	LOWERY
Witnessed By	MS. BALLARD

<<< Fold Here >>>

All interpretations are opinions based on inferences from electrical or other measurements and we cannot and do not guarantee the accuracy or correctness of any interpretation, and we shall not, except in the case of gross or willful negligence on our part, be liable or responsible for any loss, costs, damages, or expenses incurred or sustained by anyone resulting from any interpretation made by any of our officers, agents or employees. These interpretations are also subject to our general terms and conditions set out in our current Price Schedule.

Comments

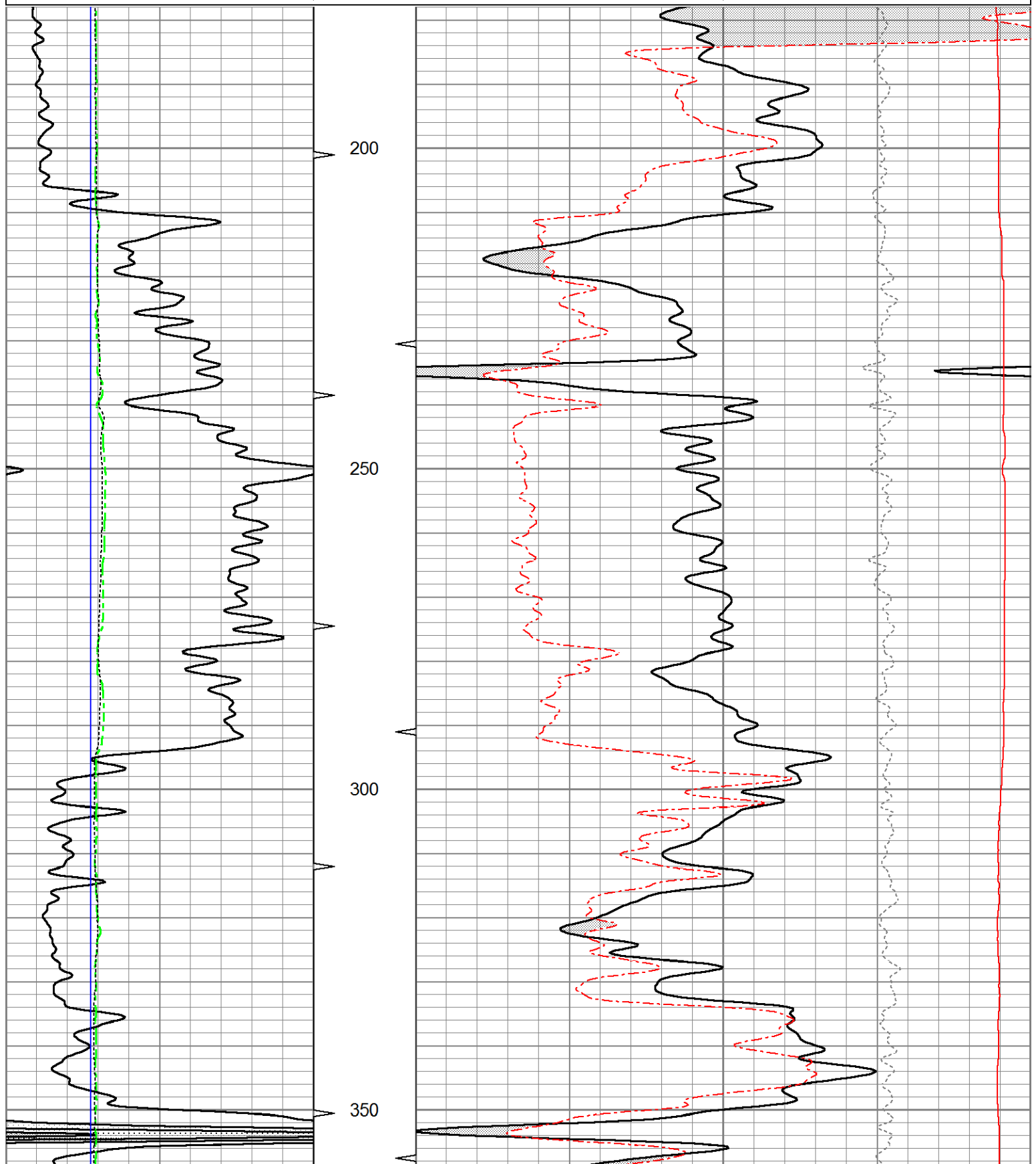
**OW2-8774
 MATRIX LIMESTONE 2.71g/cc
 ABHV COMPUTED WITH 4 1/2" CASING
 CREW : SHAMBLES**

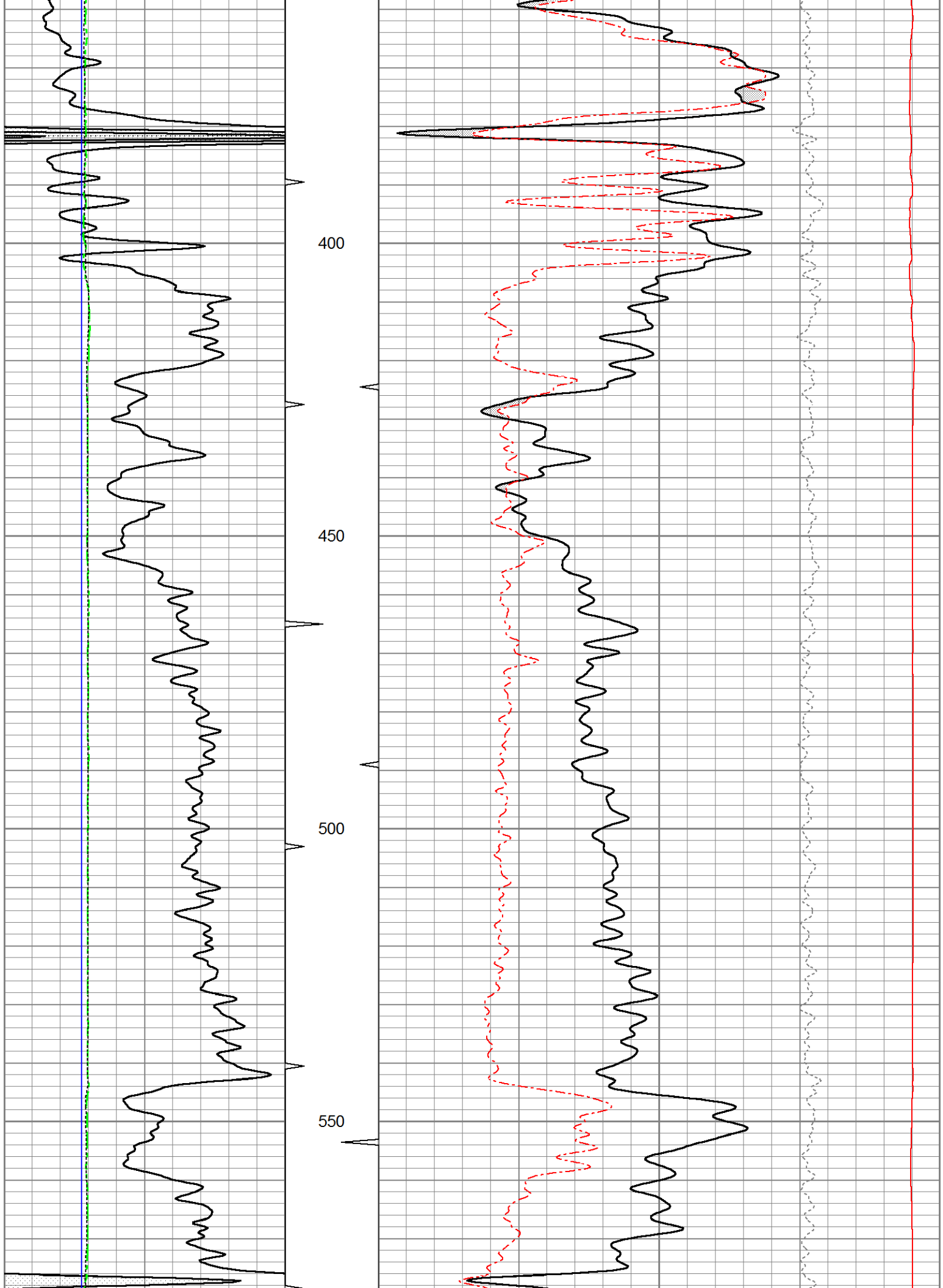


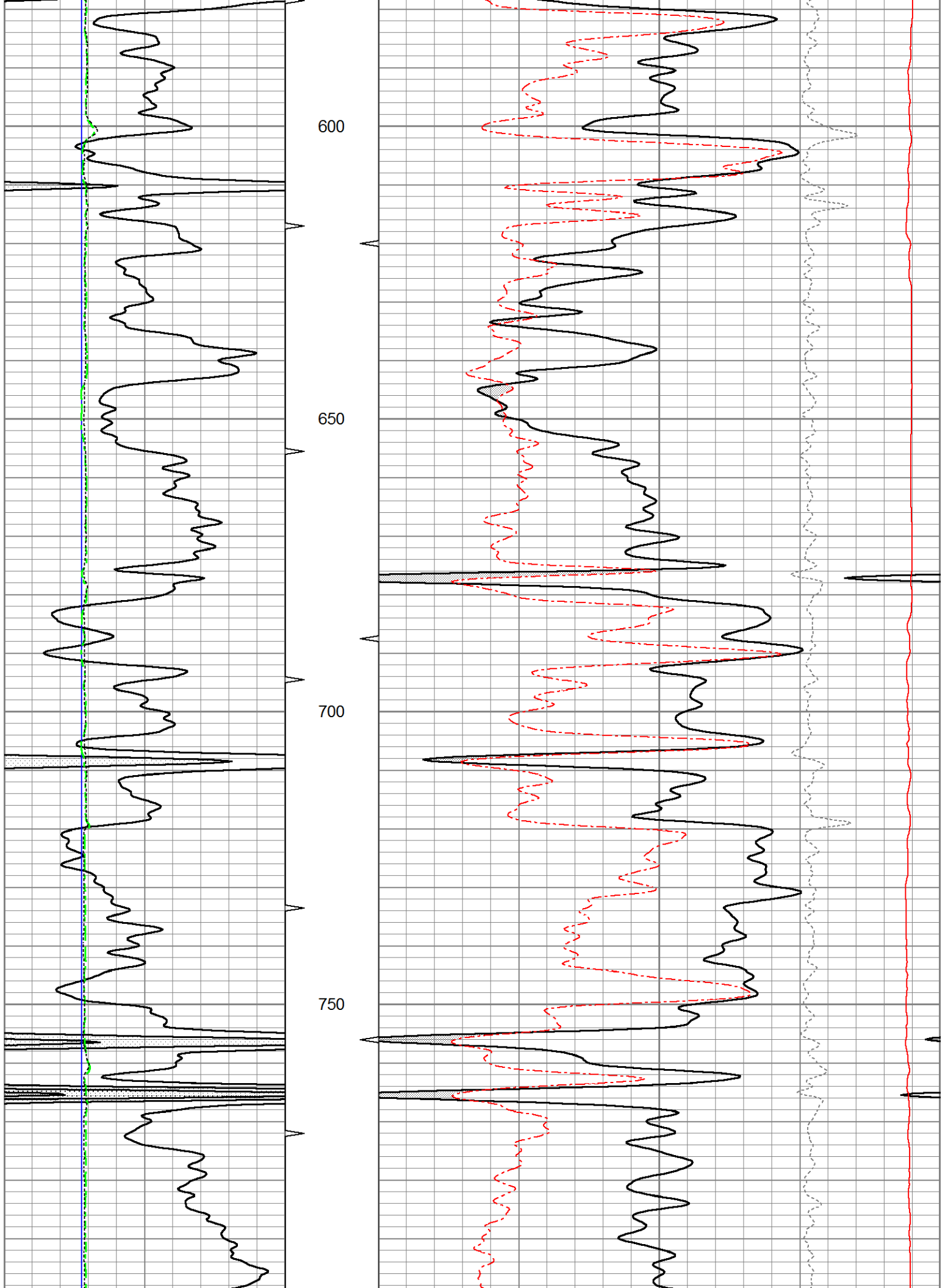
5" CDL/SWN SECTION

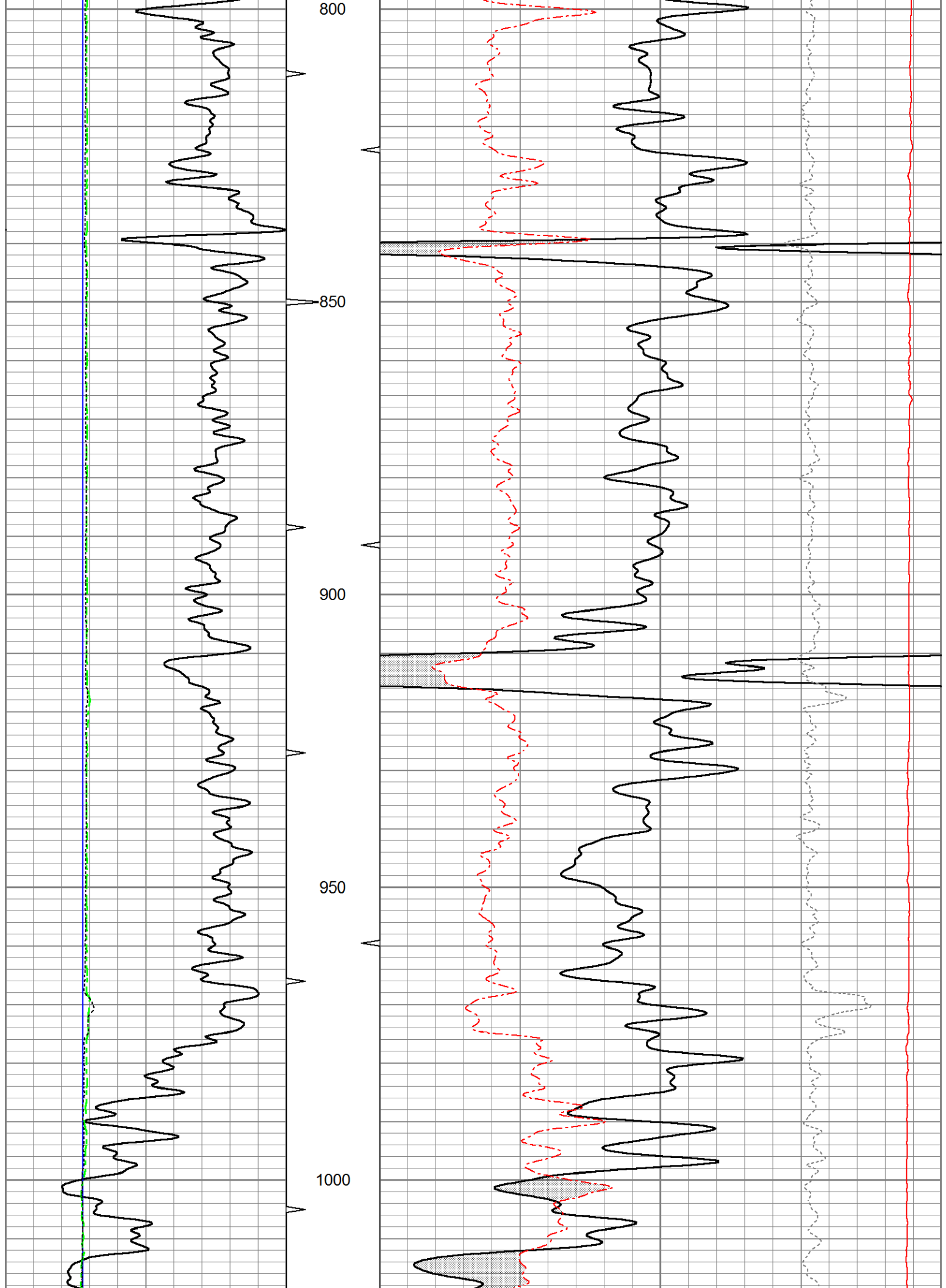
Database File ow2-8774 colt energy.db
 Dataset Pathname CDL/pass1.4
 Presentation Format _neu4
 Dataset Creation Tue Dec 02 17:50:24 2014
 Charted by Depth in Feet scaled 1:240

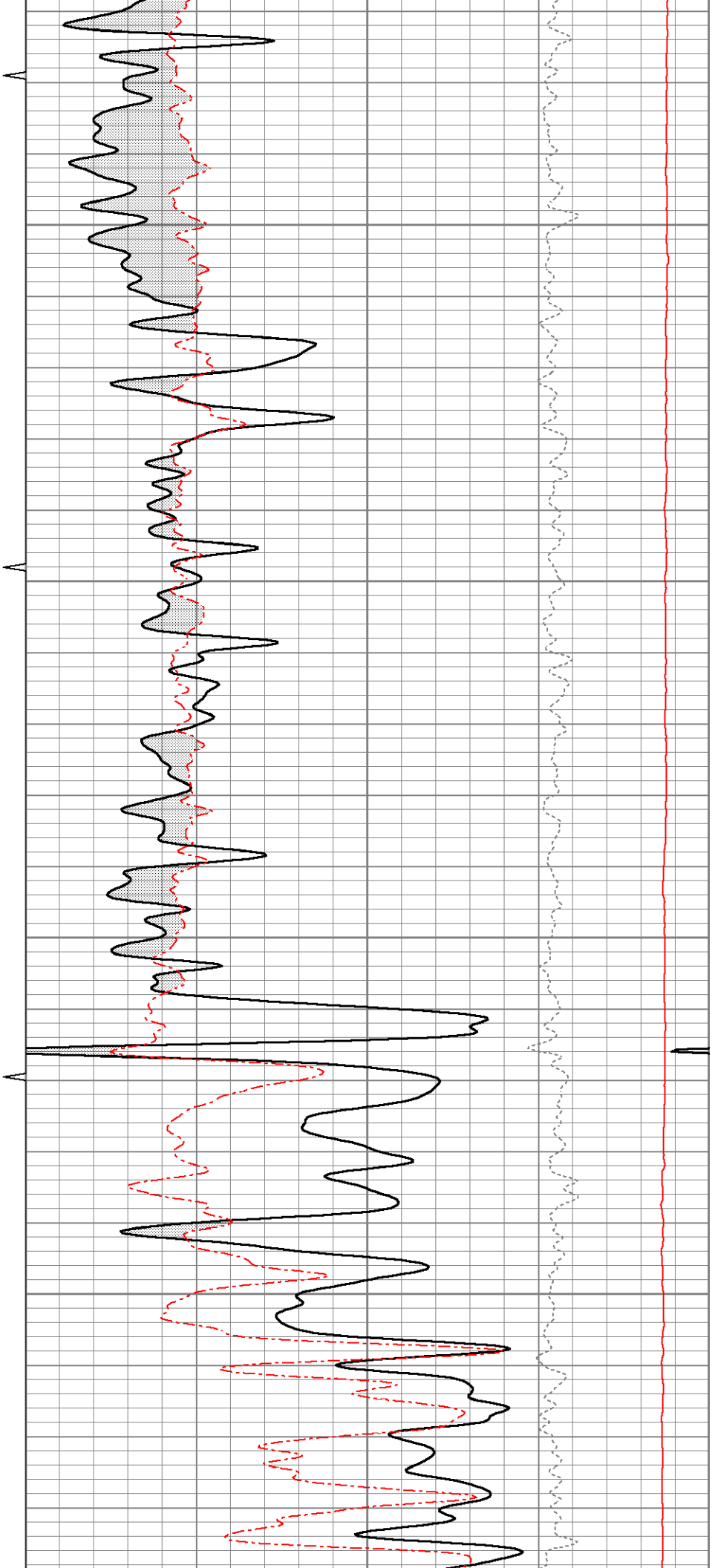
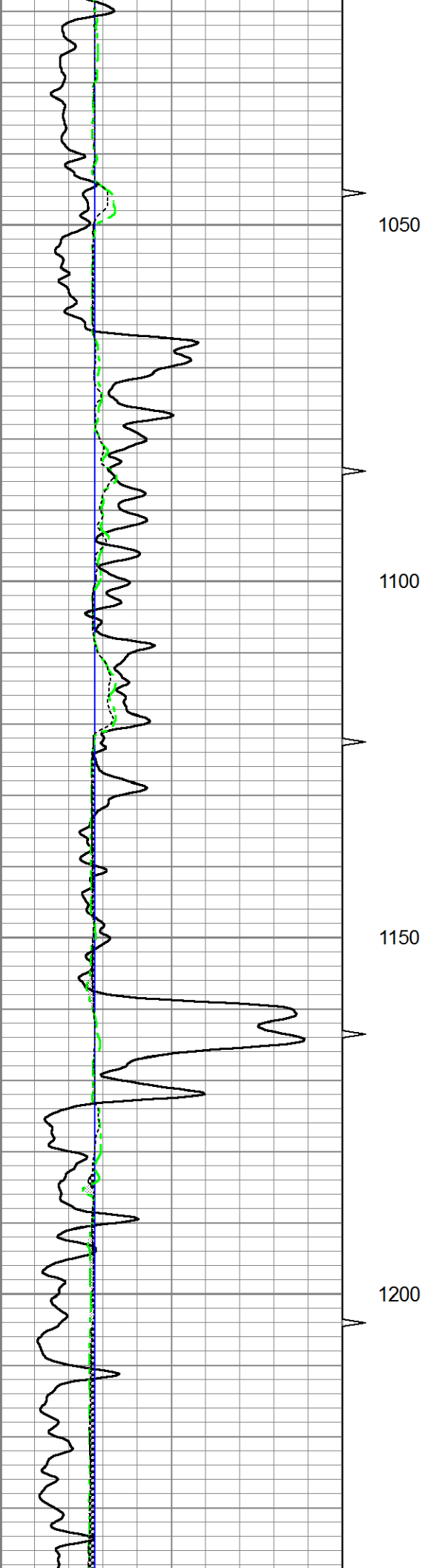
0	Gamma Ray (GAPI)	150	TBHV	30	Density Porosity (pu)	-10
4	Bit size (in)	14	ABHV	30	Neutron Porosity (pu)	-10
4	Neutron Caliper (in)	14			-0.5	Correction (g/cc) 0.5
4	Density Caliper (in)	14			5000	Line Tension (lb) 0

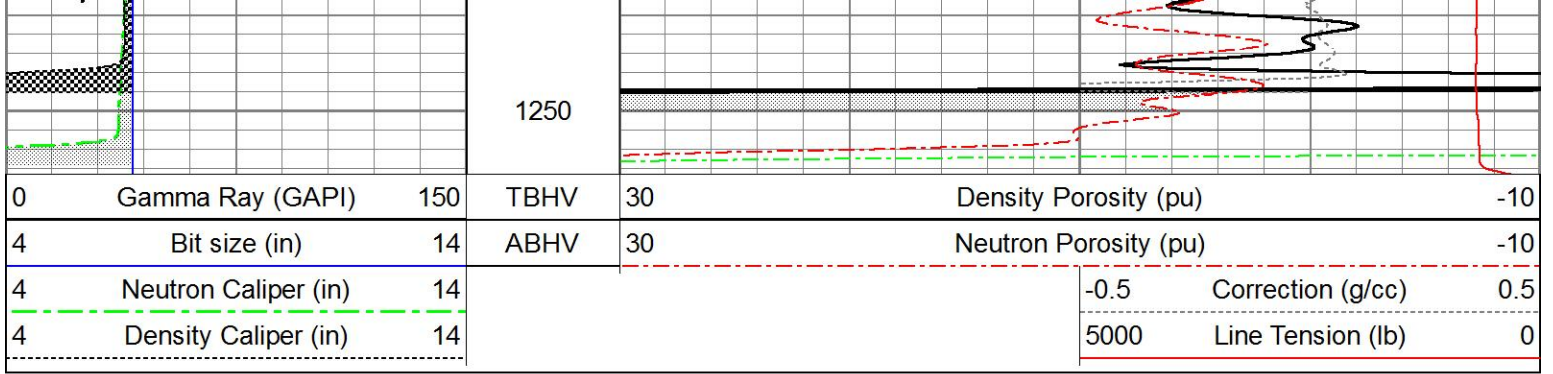








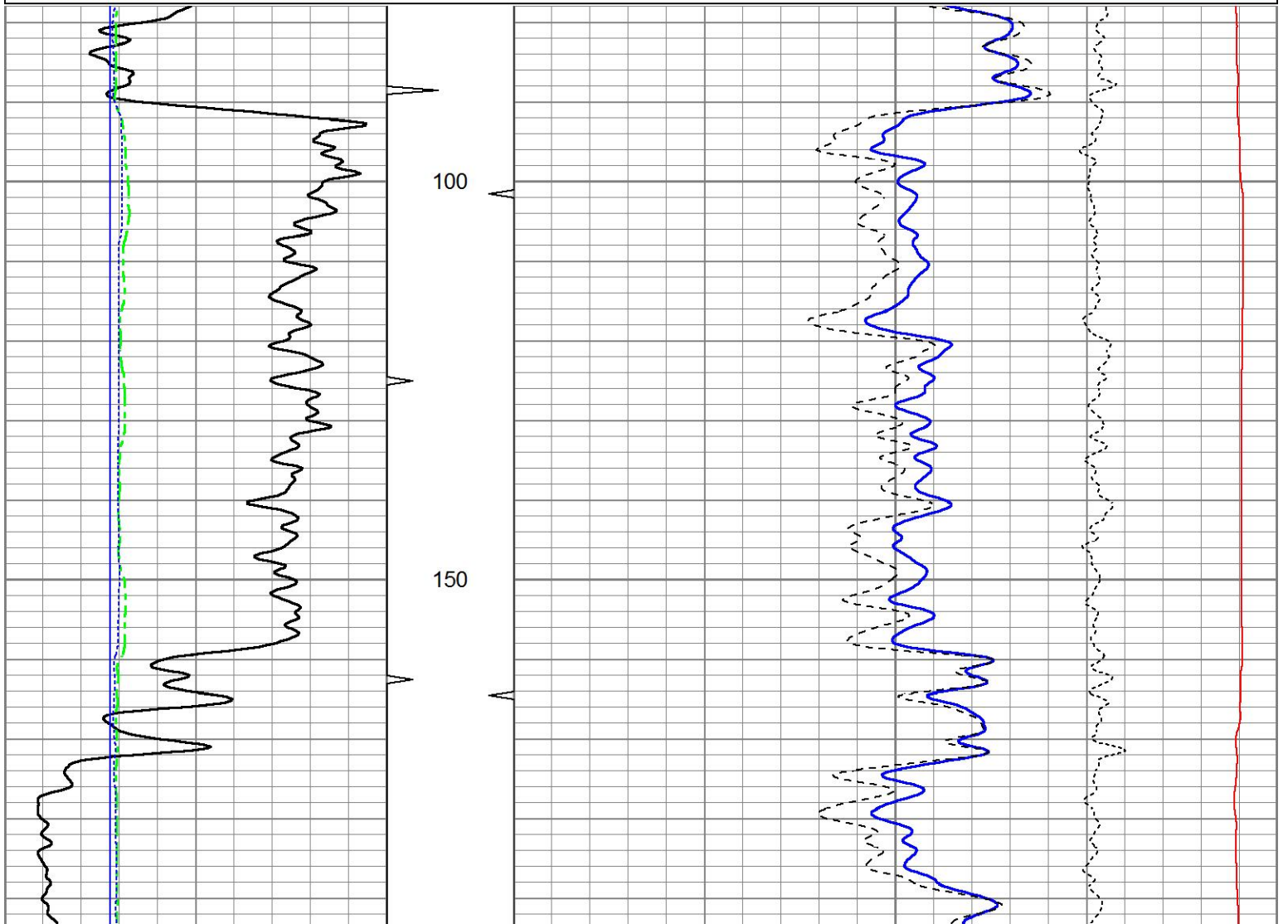


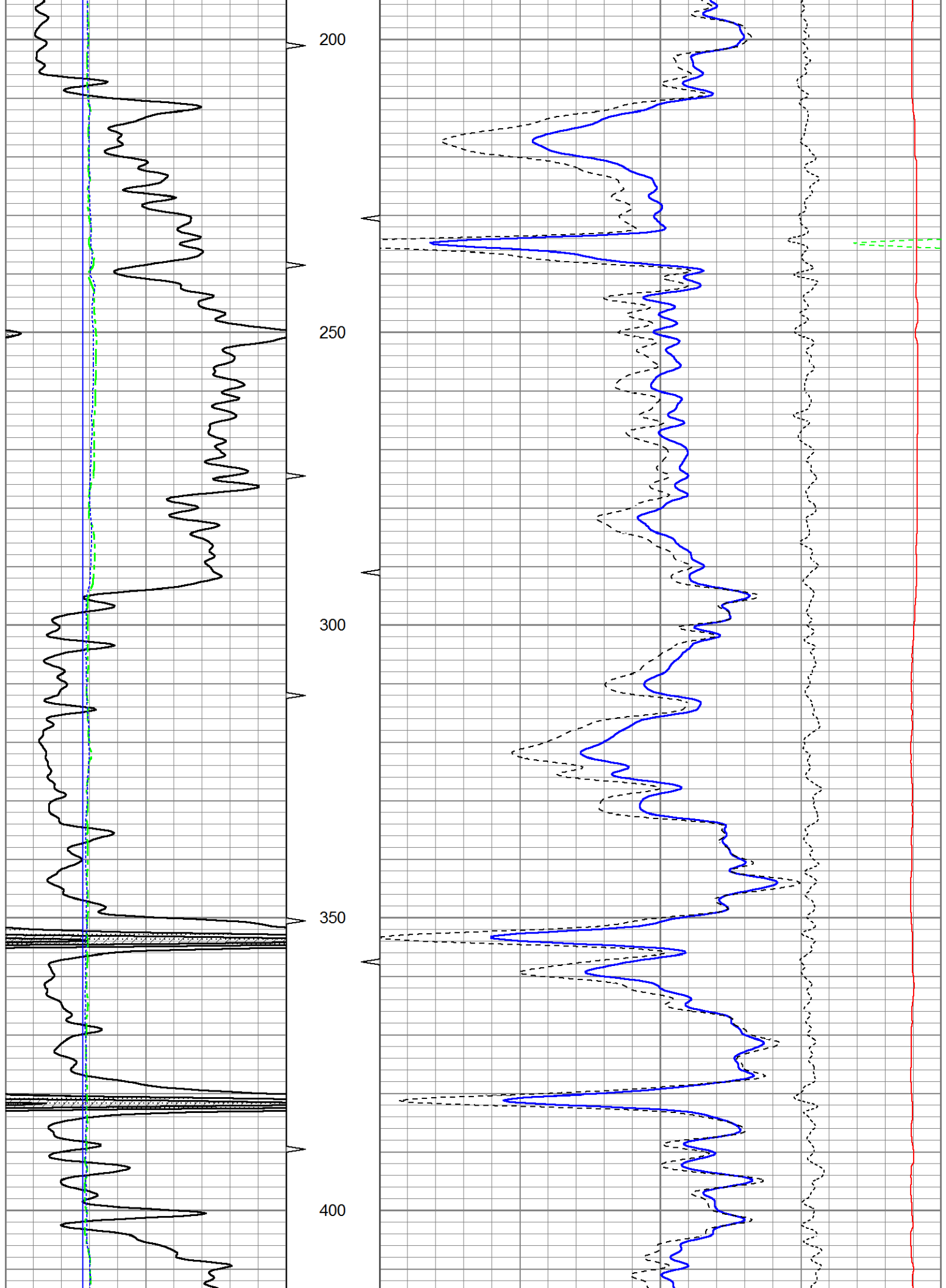


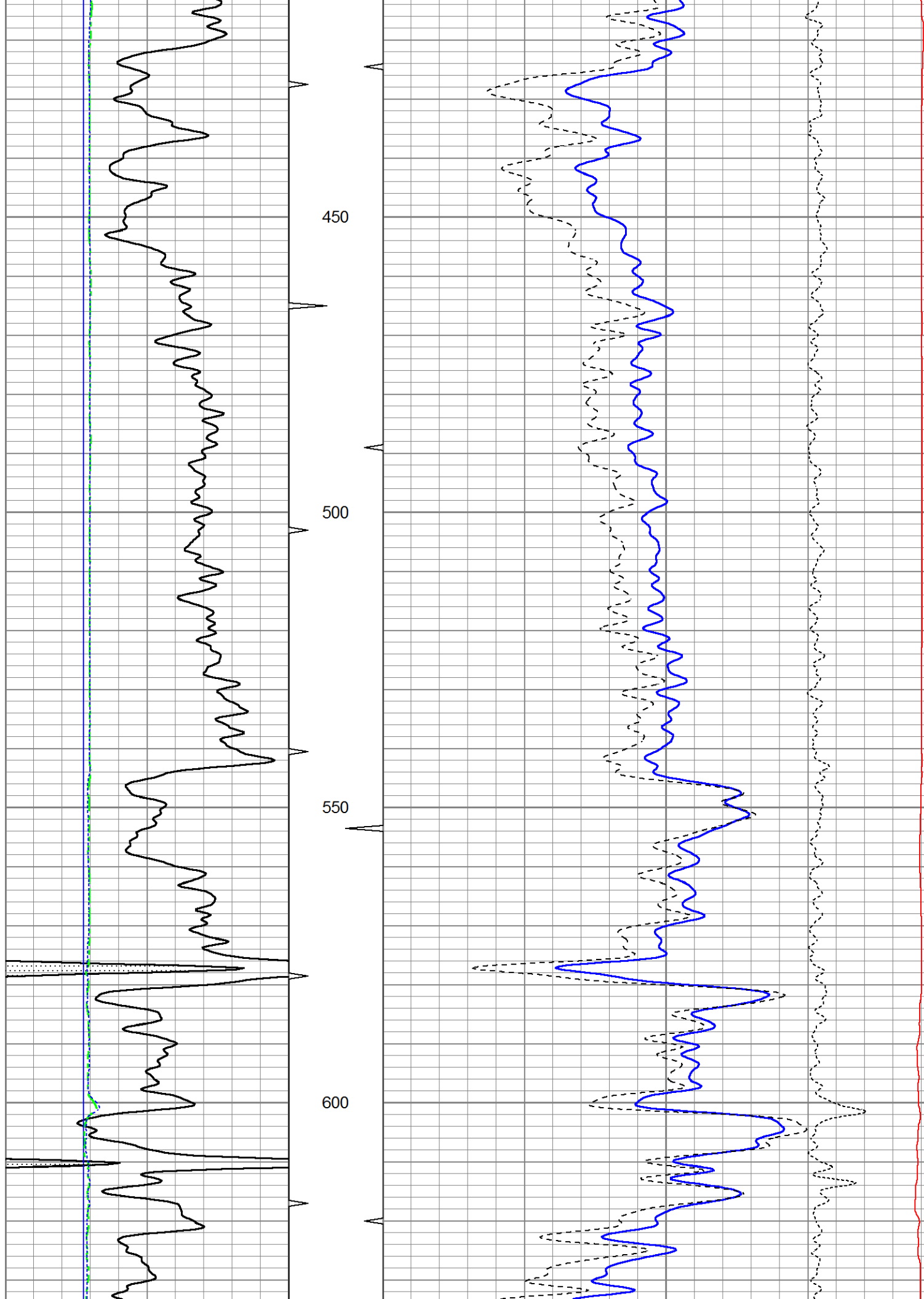
5" CDL SECTION

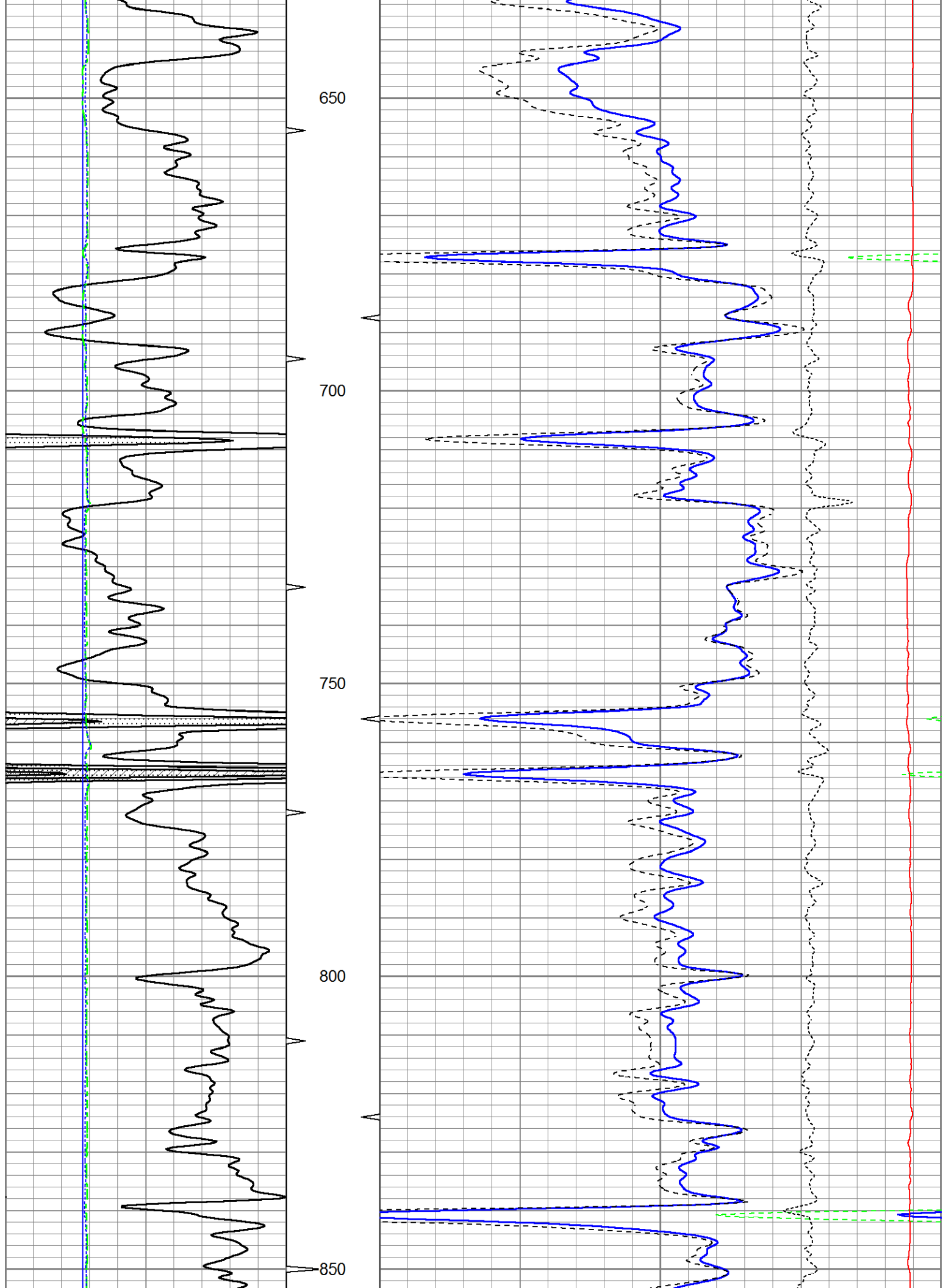
Database File ow2-8774 colt energy.db
 Dataset Pathname CDL/pass1.3
 Presentation Format bulk4
 Dataset Creation Tue Dec 02 17:50:19 2014
 Charted by Depth in Feet scaled 1:240

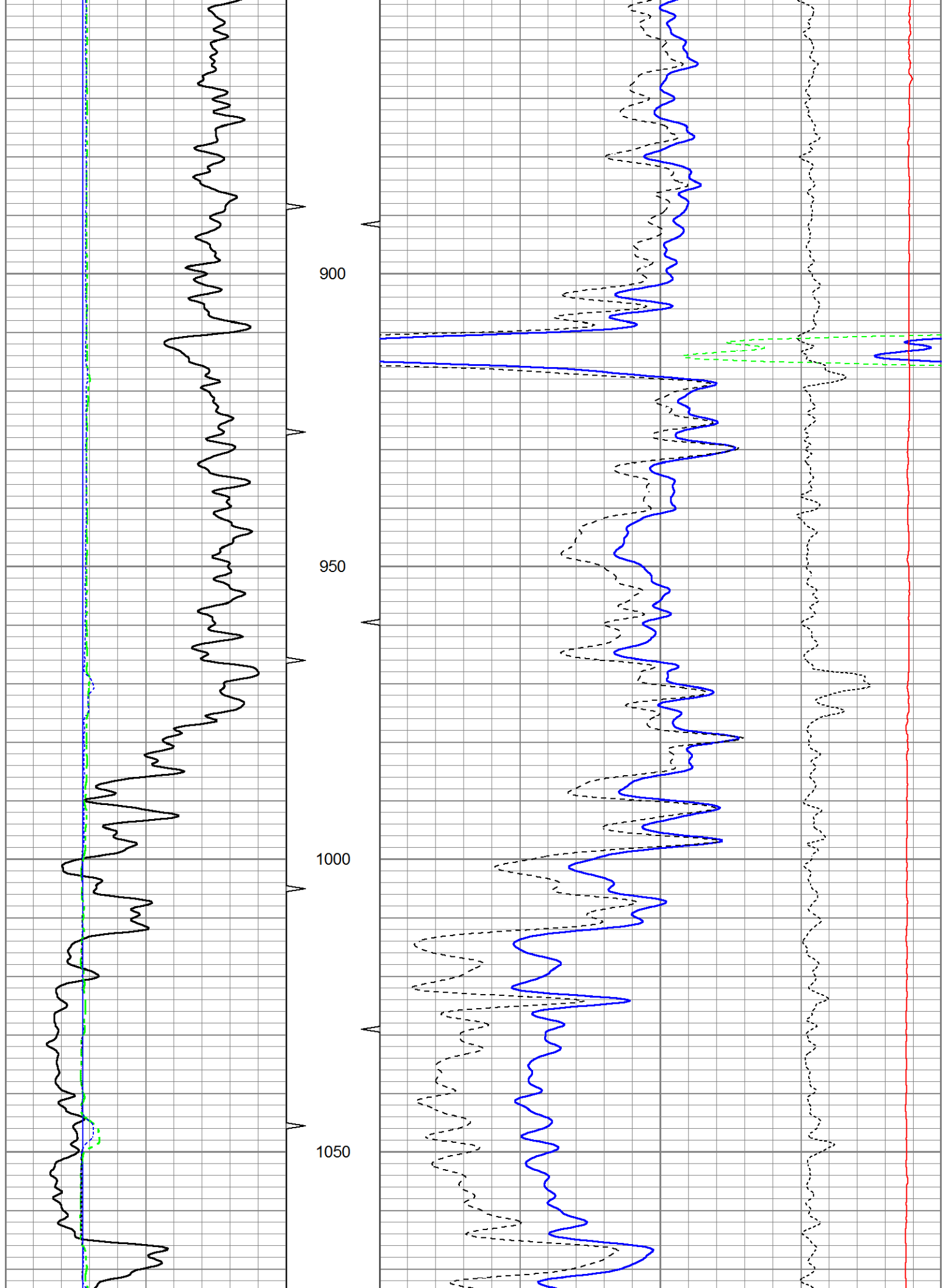
0	Gamma Ray (GAPI)	150	TBHV	2	Bulk Density (g/cc)	3	
4	Bit size (in)	14	ABHV	30	Density porosity (pu)	-10	
4	Neutron Caliper (in)	14			-0.5	Correction (g/cc)	0.5
4	Density Caliper (in)	14			5000	Line Tension (lb)	0

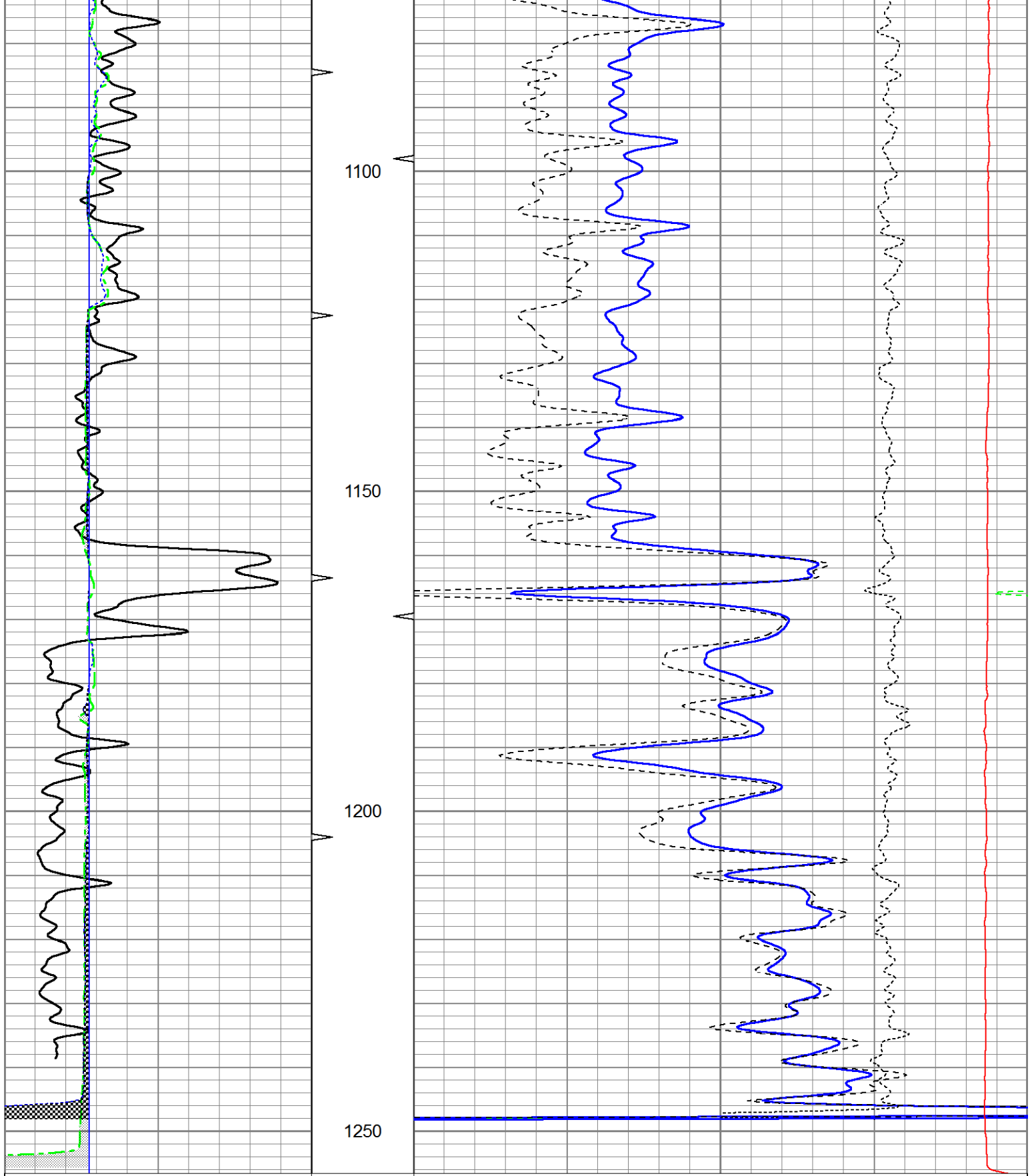












0	Gamma Ray (GAPI)	150	TBHV	2	Bulk Density (g/cc)	3	
4	Bit size (in)	14	ABHV	30	Density porosity (pu)	-10	
4	Neutron Caliper (in)	14			-0.5	Correction (g/cc)	0.5
4	Density Caliper (in)	14			5000	Line Tension (lb)	0

Sensor	Offset (ft)	Schematic	Description	Length (ft)	O.D. (in)	Weight (lb)
			Cable-CableHead	1.42	3.00	20.00

			Isolation Sub	7.72	3.50	20.00
GR	15.60		Gamma-Oilex2122 (2122) Gamma Ray Section	2.83	3.50	75.00
LSD	10.22		Density-Oilex2122 (2122) Density Section	6.08	4.00	200.00
DCAL	9.94					
SSD	9.76					
SCAL	2.54		Neutron-Sidewall3015 (3015) Sidewall Neutron Section	7.81	4.00	150.00
SWN	2.15					
NEU	2.15					

Dataset: ow2-8774 colt energy.db: field/well/CDL/pass1
 Total length: 18.15 ft
 Total weight: 445.00 lb
 O.D.: 4.00 in