



**MIDWEST SURVEYS**  
 LOGGING - PERFORATING - CONSULTING SERVICES  
 P.O. Box 68, Osawatomie, KS 66064  
 913.755.2128

**GAMMA RAY / NEUTRON / CCL**

File No. \_\_\_\_\_

Company **SCZ Resources, LLC.**

Well **Kendall Dice No. D-41**

Field **Humbolt - Chanute**

County **Allen** State **Kansas**

Location **495' FSL & 825' FWL**

**NW-SE-SW-SW**

Sec. 22 Twp. 26S Rge. 18E

Perforated Depth **GL** Elevation **NA**

Log Measured From **GL** K.B. NA

Drilling Measured From **GL** D.F. NA

Date **08-14-2014** Elevation **GL, NA**

Run Number **One**

Depth Driller **888.0**

Bottom Logged Interval **854.0**

Top Log Interval **20.0**

Fluid Level **Full**

Type Fluid **Water**

Density / Viscosity **NA**

Salinity - PPM Cl **NA**

Max Recorded Temp **NA**

Estimated Cement Top **NA**

Equipment No. **0.0**

Recorded By **Osawatomie**

Witnessed By **Gary Windsch**

Witnessed By **Jorge Ranz**

| BORE-HOLE RECORD |             | CASING RECORD |              |
|------------------|-------------|---------------|--------------|
| RUN No.          | BIT FROM TO | SIZE          | WGT. FROM TO |
| One              | 9.875' 20.0 | 7.00"         | 17.0# 20.0   |
| Two              | 5.625' 20.0 | 2.875"        | 6.5# 0.0     |

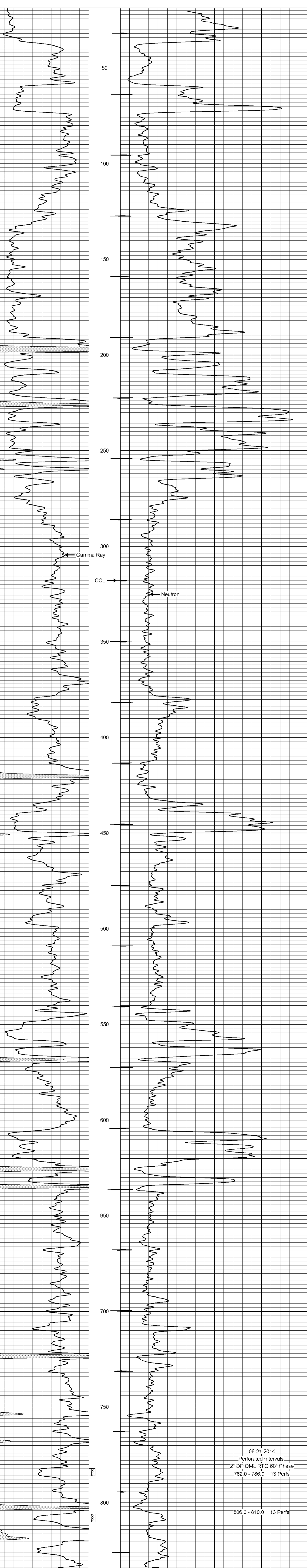
<<< Fold Here >>>

All interpretations are opinions based on inferences from electrical or other measurements and we cannot and do not guarantee the accuracy or correctness of any interpretation, and we shall not, except in the case of gross or willful negligence on our part, be liable or responsible for any loss, costs, damages, or expenses incurred or sustained by anyone resulting from any interpretation made by any of our officers, agents or employees. These interpretations are also subject to our general terms and conditions set out in our current Price Schedule.

Comments

Drilling Contractor :  
 Evans Energy & Development, Inc.

Database File: dice41clk.db  
 Dataset Pathname: pass1  
 Presentation Format: gr-n-ccl  
 Dataset Creation: Thu Aug 14 12:20:45 2014 by Log SCH 111116  
 Charted by: Depth in Feet scaled 1:240



08-21-2014  
 Perforated Intervals  
 2" DP DML RTG 60° Phase  
 782.0 - 786.0 13 Perfs  
 806.0 - 810.0 13 Perfs