



**COMPLETION  
& PRODUCTION  
SERVICES CO.**

**MICRO  
LOG**

Company LIBERTY OPER. & COMPL. INC.  
Well GANOUNG "B" #2  
Field WILDCAT  
County ROOKS  
State KANSAS

Company LIBERTY OPERATIONS & COMPLETIONS, INC.  
Well GANOUNG "B" #2  
Field WILDCAT  
County ROOKS State KANSAS

Location: API # : 15-163-24198-0000  
770' FSL & 2310' FWL  
S/2 - NE - SE - SW  
SEC 28 TWP 10S RGE 17W  
Permanent Datum GROUND LEVEL Elevation 2078  
Log Measured From KELLY BUSHING 5' A.G.L.  
Drilling Measured From KELLY BUSHING  
Other Services  
CDL/CNL/PE  
DIL/SONIC  
Elevation  
K.B. 2083  
D.F. 2081  
G.L. 2078

Date	3/29/14		
Run Number	TWO		
Depth Driller	3780		
Depth Logger	3780		
Bottom Logged Interval	3764		
Top Log Interval	2800		
Casing Driller	7 7/8"@220'		
Casing Logger	218		
Bit Size	7 7/8"		
Type Fluid in Hole	CHEMICAL MUD	CHLORIDES 12,000 PPM	
Density / Viscosity	9.5/50		
pH / Fluid Loss	10.0/16.0		
Source of Sample	FLOWLINE		
Rim @ Meas. Temp	.320@70F		
Rmf @ Meas. Temp	.240@70F		
Rmc @ Meas. Temp	.384@70F		
Source of Rmf / Rmc	MEASUREMENT		
Rim @ BHT	.196@114F		
Time Circulation Stopped	4.5 HOURS		
Time Logger on Bottom	8:45 A.M.		
Maximum Recorded Temperature	114F		
Equipment Number	4854		
Location	HAYS, KANSAS		
Recorded By	JEFF LUEBBERS		
Witnessed By	TONY RICHARDSON	ROGER COMEAU	

<<< Fold Here >>>

All interpretations are opinions based on inferences from electrical or other measurements and we cannot and do not guarantee the accuracy or correctness of any interpretation, and we shall not, except in the case of gross or willful negligence on our part, be liable or responsible for any loss, costs, damages, or expenses incurred or sustained by anyone resulting from any interpretation made by any of our officers, agents or employees. These interpretations are also subject to our general terms and conditions set out in our current Price Schedule.

**Comments**

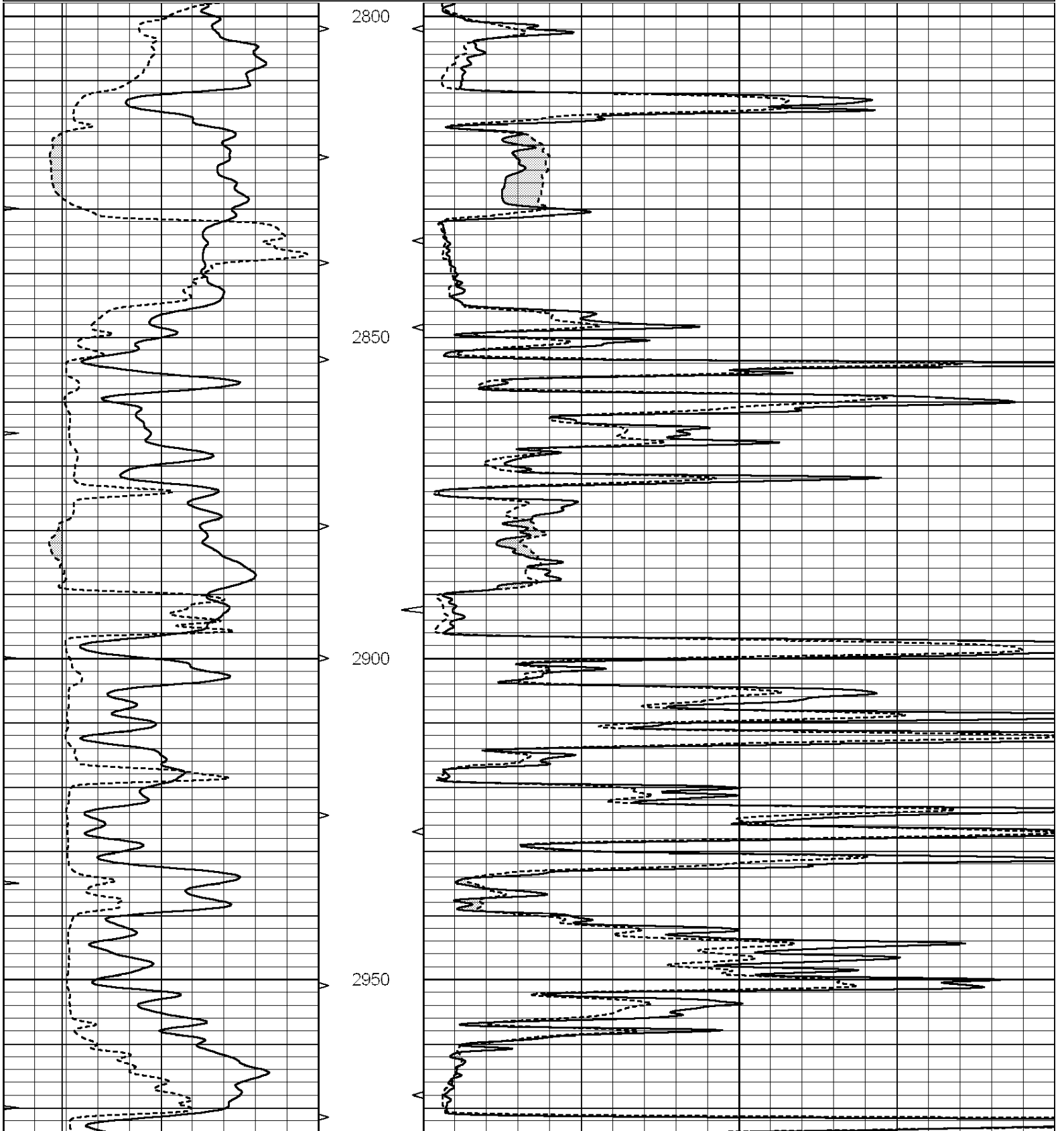
THANK YOU FOR USING "NABORS" HAYS, KANSAS (785) 628-6395  
DIRECTIONS  
PLAINVILLE, KS., S. ON HWY 183 TO "CC RD.", E. TO (DEAD END), 1N. TO "BB RD.", 1E. TO "RD. 21",  
3/4S. TO CATTLE GUARD, 1/2 S.E.

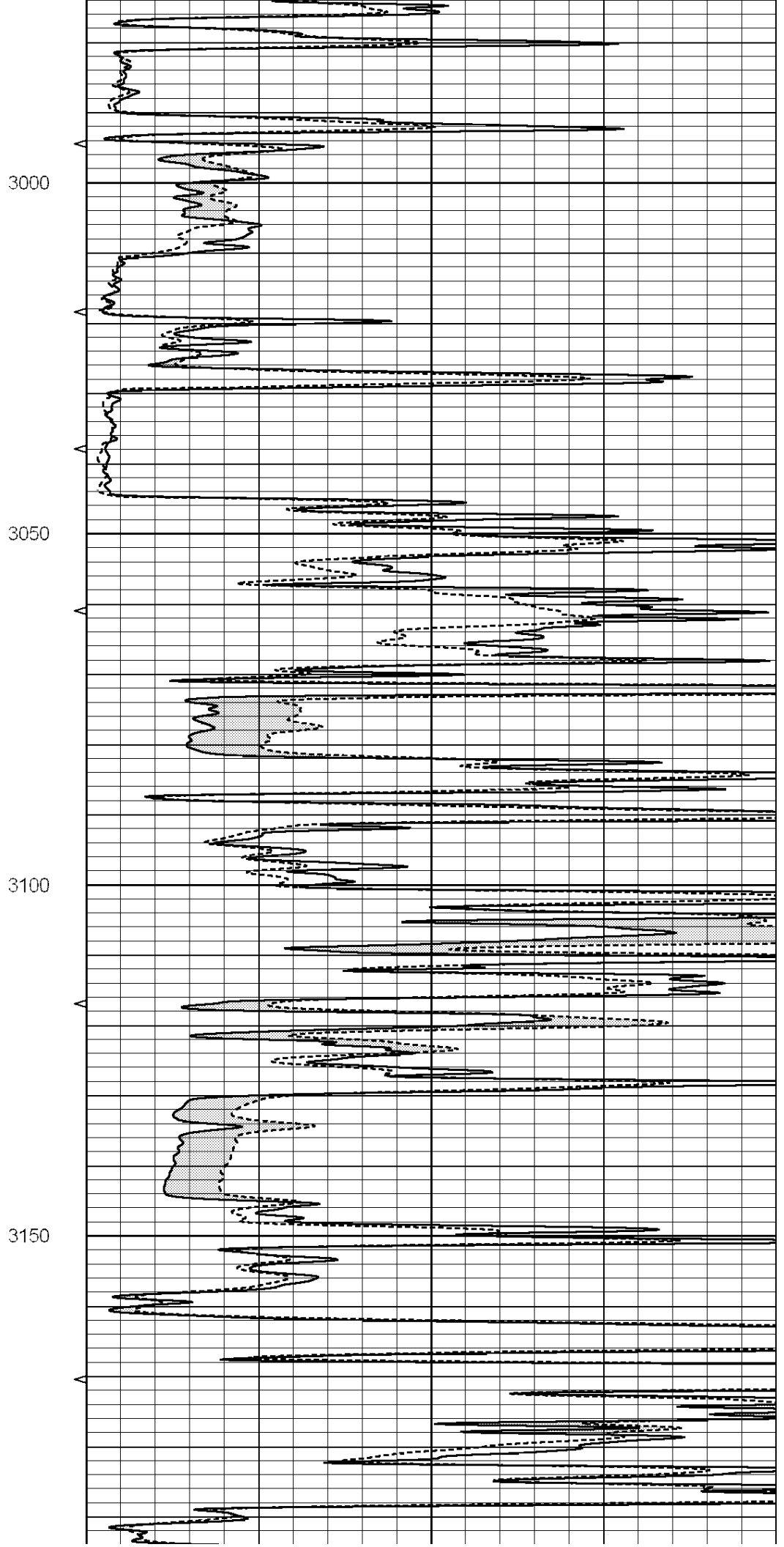
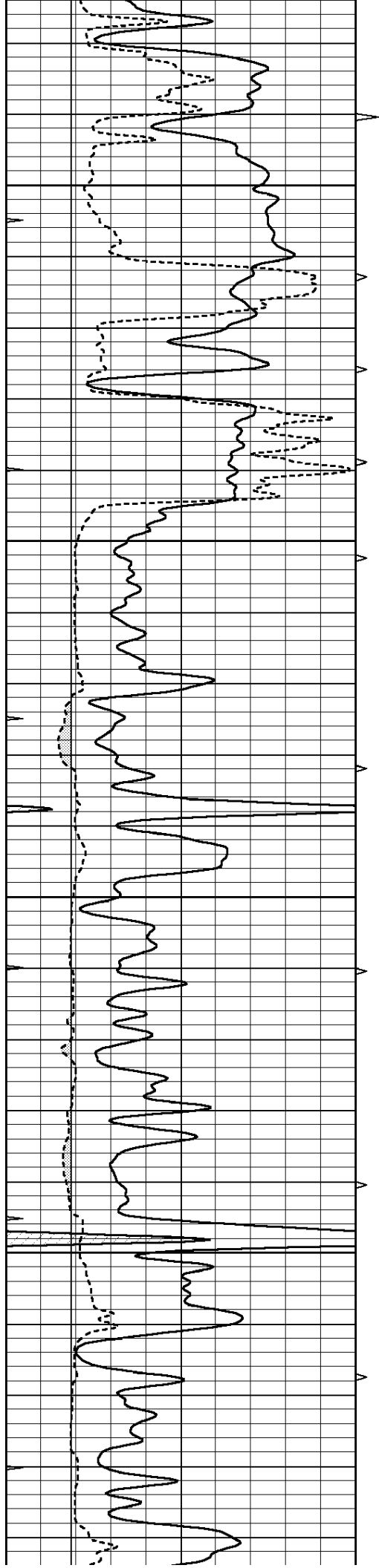


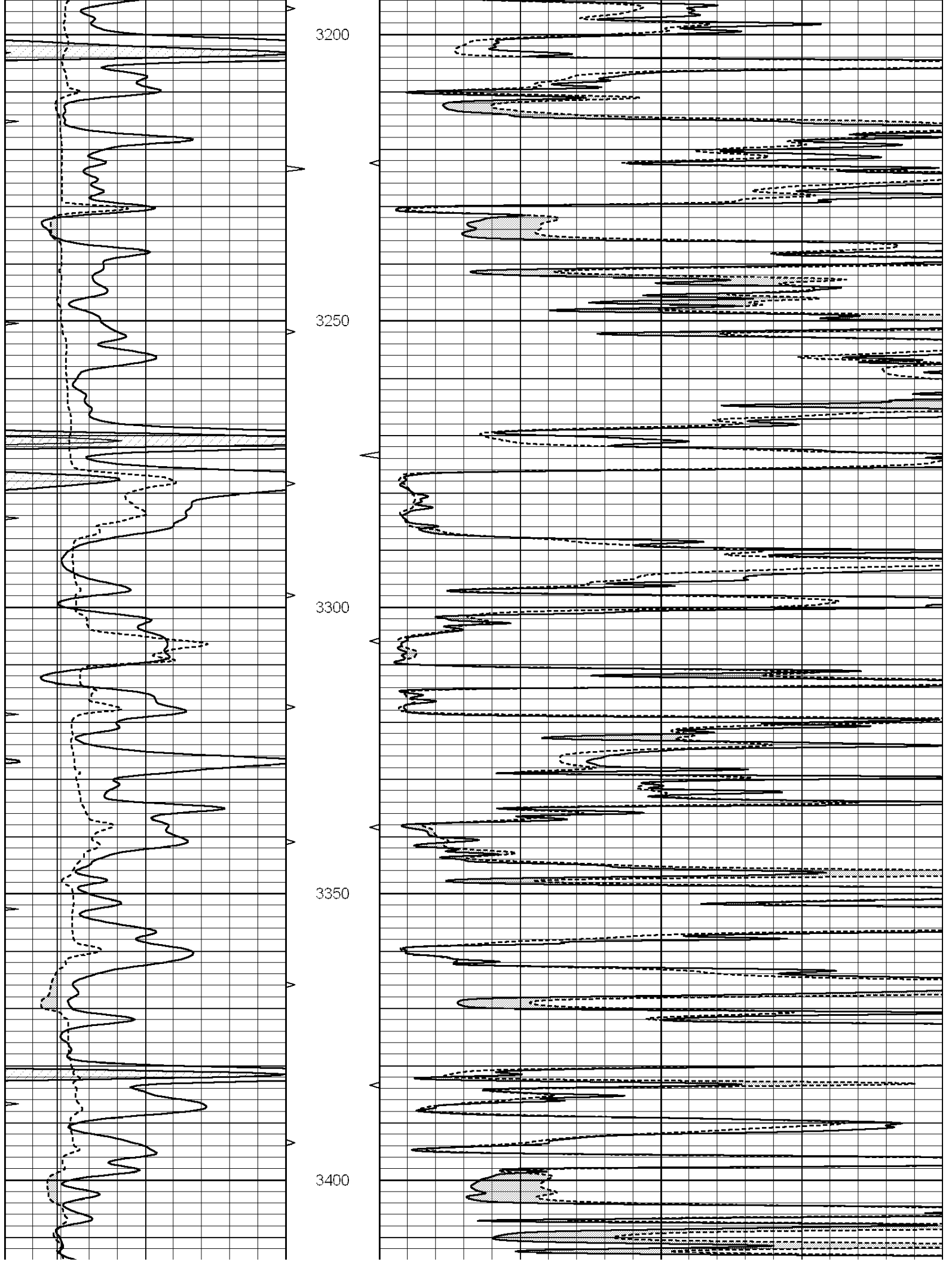
**MAIN SECTION**

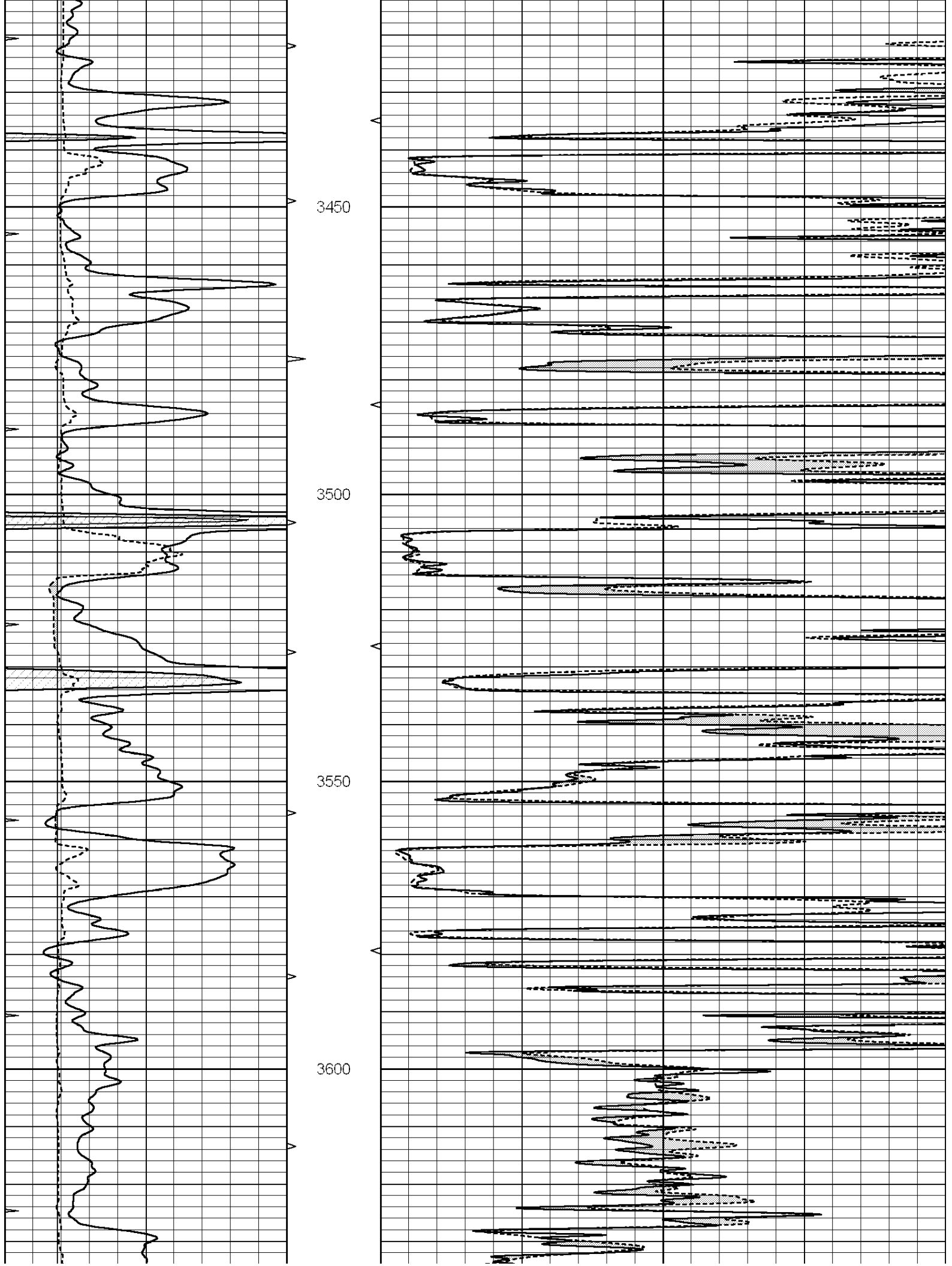
Database File: 22274pe.db  
 Dataset Pathname: pass6.3  
 Presentation Format: micro  
 Dataset Creation: Sat Mar 29 11:58:07 2014  
 Charted by: Depth in Feet scaled 1:240

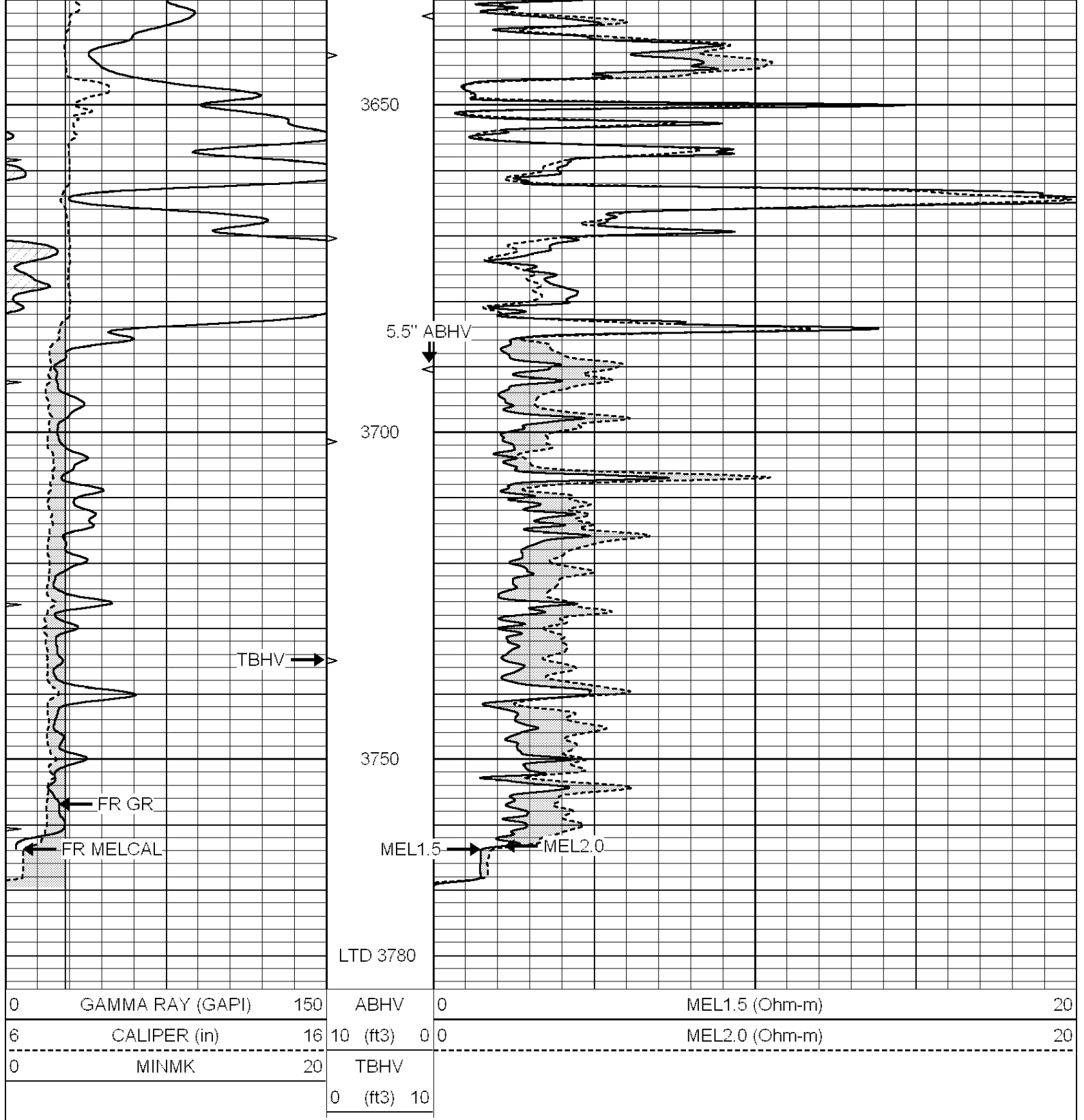
0	GAMMA RAY (GAPI)	150	ABHV	0	MEL1.5 (Ohm-m)	20
6	CALIPER (in)	16	10 (ft3)	0	MEL2.0 (Ohm-m)	20
0	MINMK	20	TBHV			
			0 (ft3)	10		









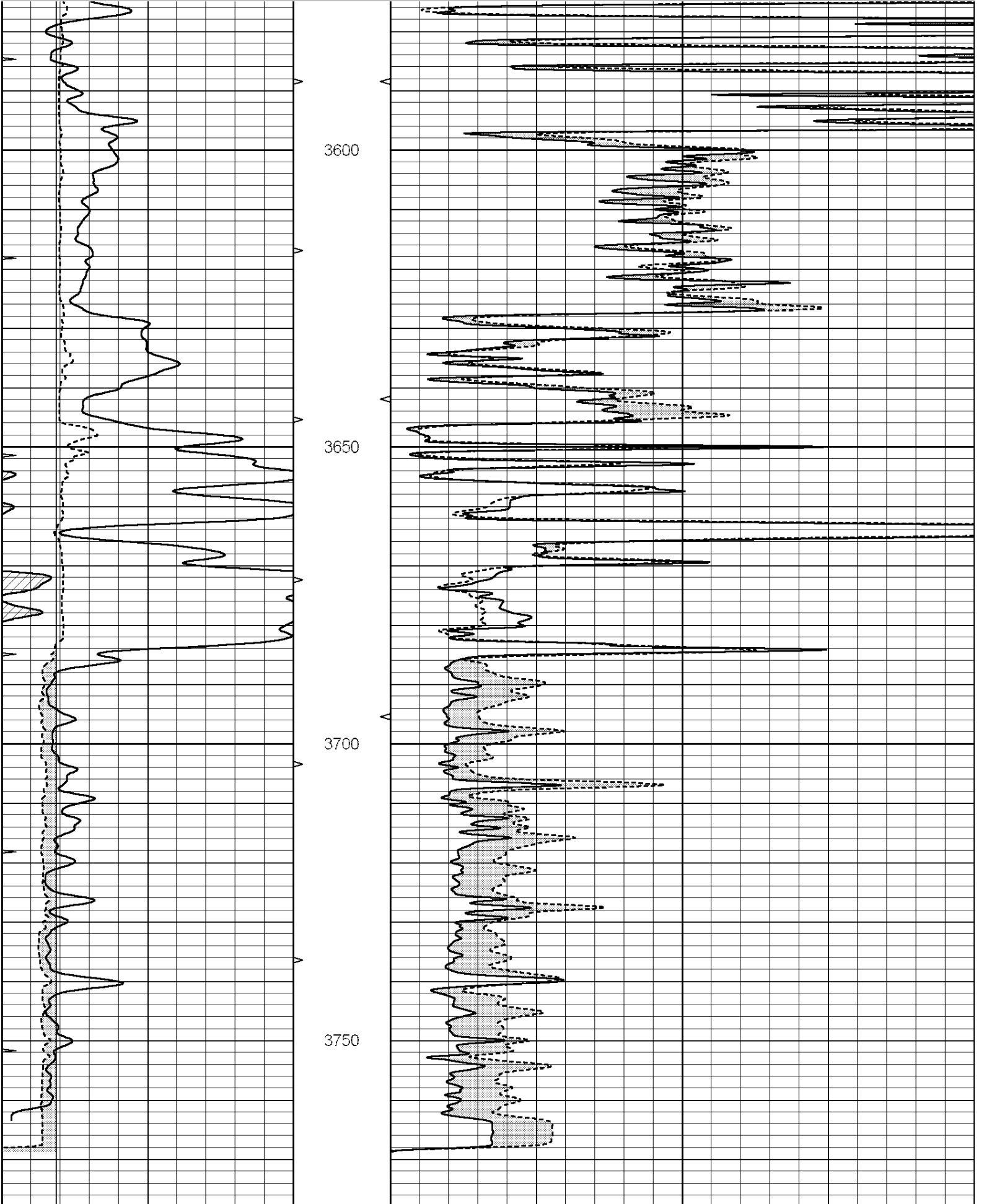


# REPEAT SECTION

Database File: 22274pe.db  
 Dataset Pathname: pass5.2  
 Presentation Format: micro  
 Dataset Creation: Sat Mar 29 11:15:44 2014 by Calc SOC 120430  
 Charted by: Depth in Feet scaled 1:240

0	GAMMA RAY (GAPI)	150	ABHV	0	MEL1.5 (Ohm-m)	20
---	------------------	-----	------	---	----------------	----

6	CALIPER (in)	16	10 (ft3)	0 0	MEL2.0 (Ohm-m)	20
0	MINMK	20	TBHV			
			0 (ft3)	10		



0	GAMMA RAY (GAPI)	150	ABHV	0	MEL1.5 (Ohm-m)	20
6	CALIPER (in)	16	10 (ft3)	0	MEL2.0 (Ohm-m)	20
0	MINMK	20	TBHV			
			0 (ft3)	10		

### Calibration Report

Database File: 22274pe.db  
Dataset Pathname: pass6.3  
Dataset Creation: Sat Mar 29 11:58:07 2014

#### MICRO Calibration Report

Serial Number:	070911	
Tool Model:	ProbeN	
Performed:	Wed Feb 26 12:46:10 2014	
 Caliper Calibration:	Gain=3.764	Offset=2.877
	Low Cal	High Cal
References	7.700	15.000
Readings	1.281	3.221
 1.5" Calibration:	Gain=25.000	Offset=0.000
	Low Cal	High Cal
References	0.000	20.000
Readings	0.001	1.276
 2" Calibration:	Gain=55.000	Offset=-1.000
	Low Cal	High Cal
References	0.000	20.000
Readings	0.003	1.108

#### Gamma Ray Calibration Report

Serial Number:	070559	
Tool Model:	OPEN_GR	
Performed:	Mon Mar 24 02:01:13 2014	
 Calibrator Value:	1.0	GAPI
Background Reading:	0.0	cps
Calibrator Reading:	1.0	cps
 Sensitivity:	0.2200	GAPI/cps