



**COMPLETION
& PRODUCTION
SERVICES CO.**

**SONIC
LOG**

Company LIBERTY OPER. & COMPL. INC.
Well GANOUNG "B" #2
Field WILDCAT
County ROOKS
State KANSAS

Company LIBERTY OPERATIONS & COMPLETIONS, INC.
Well GANOUNG "B" #2
Field WILDCAT
County ROOKS State KANSAS

Location: API # : 15-163-24198-0000
770' FSL & 2310' FWL
S/2 - NE - SE - SW
SEC 28 TWP 10S RGE 17W
Permanent Datum GROUND LEVEL Elevation 2078
Log Measured From KELLY BUSHING 5' A.G.L.
Drilling Measured From KELLY BUSHING
Other Services
CDL/CNL/PE
DIL/MEL
Elevation
K.B. 2083
D.F. 2081
G.L. 2078

| | | | |
|------------------------------|-----------------|----------------------|--|
| Date | 3/29/14 | | |
| Run Number | TWO | | |
| Depth Driller | 3780 | | |
| Depth Logger | 3780 | | |
| Bottom Logged Interval | 3772 | | |
| Top Log Interval | 200 | | |
| Casing Driller | 7 7/8"@220' | | |
| Casing Logger | 218 | | |
| Bit Size | 7 7/8" | | |
| Type Fluid in Hole | CHEMICAL MUD | CHLORIDES 12,000 PPM | |
| Density / Viscosity | 9.5/50 | | |
| pH / Fluid Loss | 10.0/16.0 | | |
| Source of Sample | FLOWLINE | | |
| Rim @ Meas. Temp | .320@70F | | |
| Rmf @ Meas. Temp | .240@70F | | |
| Rmc @ Meas. Temp | .384@70F | | |
| Source of Rmf / Rmc | MEASUREMENT | | |
| Rim @ BHT | .196@114F | | |
| Time Circulation Stopped | 4.5 HOURS | | |
| Time Logger on Bottom | 8:45 A.M. | | |
| Maximum Recorded Temperature | 114F | | |
| Equipment Number | 4854 | | |
| Location | HAYS, KANSAS | | |
| Recorded By | JEFF LUEBBERS | | |
| Witnessed By | TONY RICHARDSON | ROGER COMEAU | |

<<< Fold Here >>>

All interpretations are opinions based on inferences from electrical or other measurements and we cannot and do not guarantee the accuracy or correctness of any interpretation, and we shall not, except in the case of gross or willful negligence on our part, be liable or responsible for any loss, costs, damages, or expenses incurred or sustained by anyone resulting from any interpretation made by any of our officers, agents or employees. These interpretations are also subject to our general terms and conditions set out in our current Price Schedule.

Comments

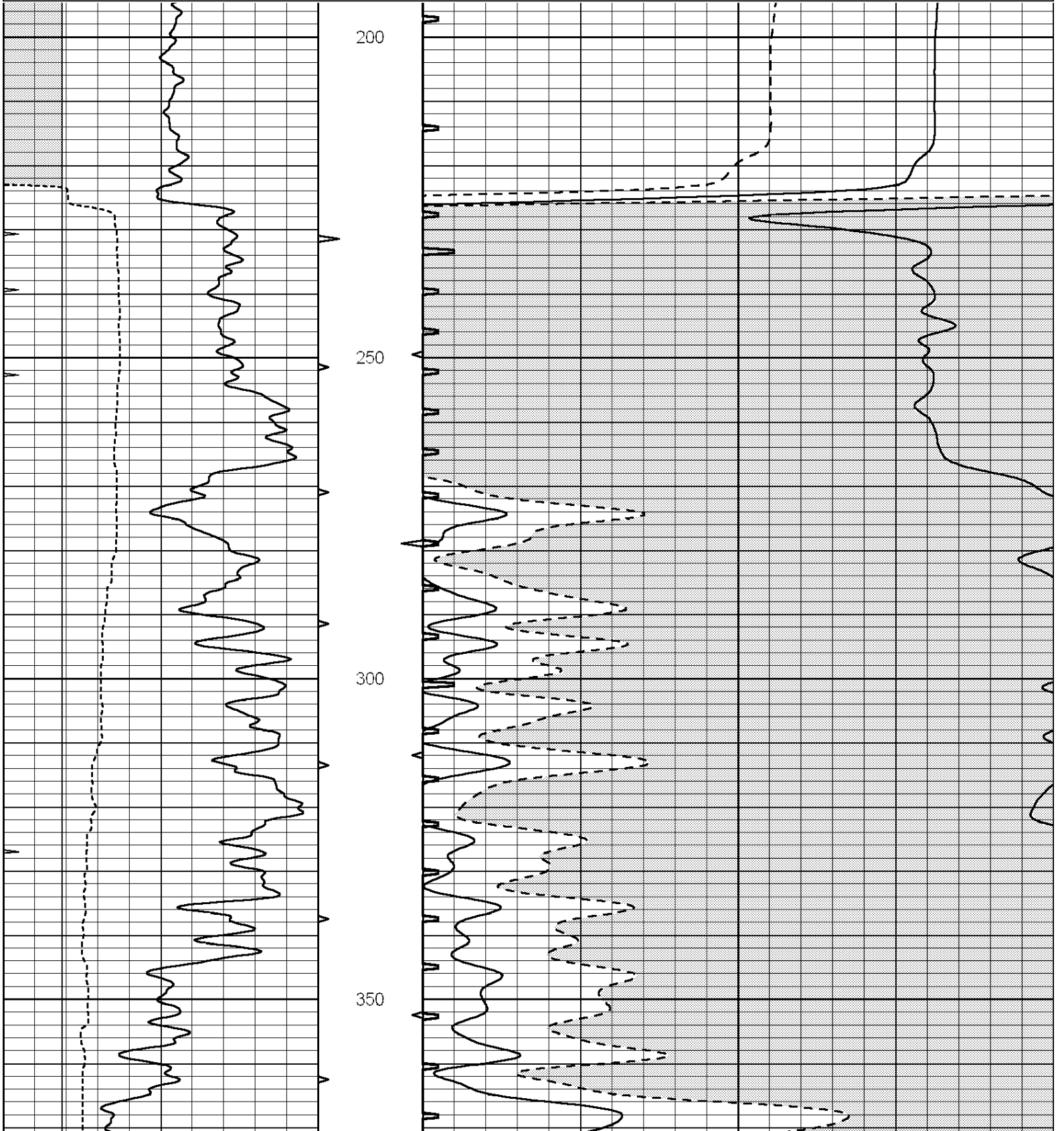
THANK YOU FOR USING "NABORS" HAYS, KANSAS (785) 628-6395
DIRECTIONS
PLAINVILLE, KS., S. ON HWY 183 TO "CC RD.", E. TO (DEAD END), 1N. TO "BB RD.", 1E. TO "RD. 21",
3/4S. TO CATTLE GUARD, 1/2 S.E.

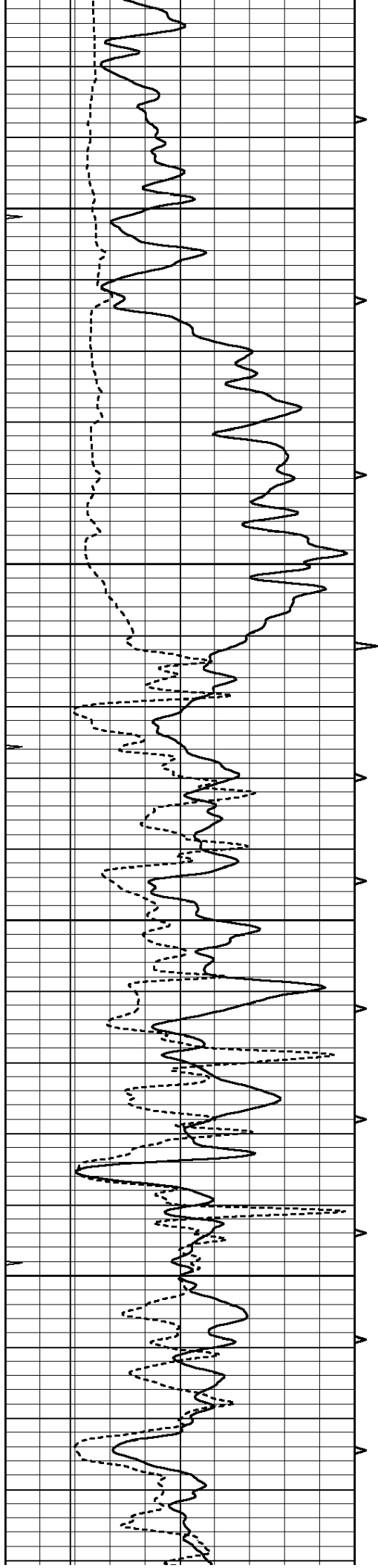


MAIN SECTION

Database File: 22274pe.db
 Dataset Pathname: pass6.5
 Presentation Format: slt
 Dataset Creation: Sat Mar 29 12:40:50 2014 by Calc SOC 120430
 Charted by: Depth in Feet scaled 1:240

| | | | | | | |
|---|------------------|-----|----------|-----|----------------------|---------------------|
| 0 | GAMMA RAY (GAPI) | 150 | ABHV | 140 | DELTA TIME (usec/ft) | 40 |
| 6 | CALIPER (in) | 16 | 10 (ft3) | 0 | 30 | SONIC POROSITY (pu) |
| 0 | MINMK | 20 | TBHV | 0 | ITT (msec) | 20 |
| | | | 0 (ft3) | 10 | | |



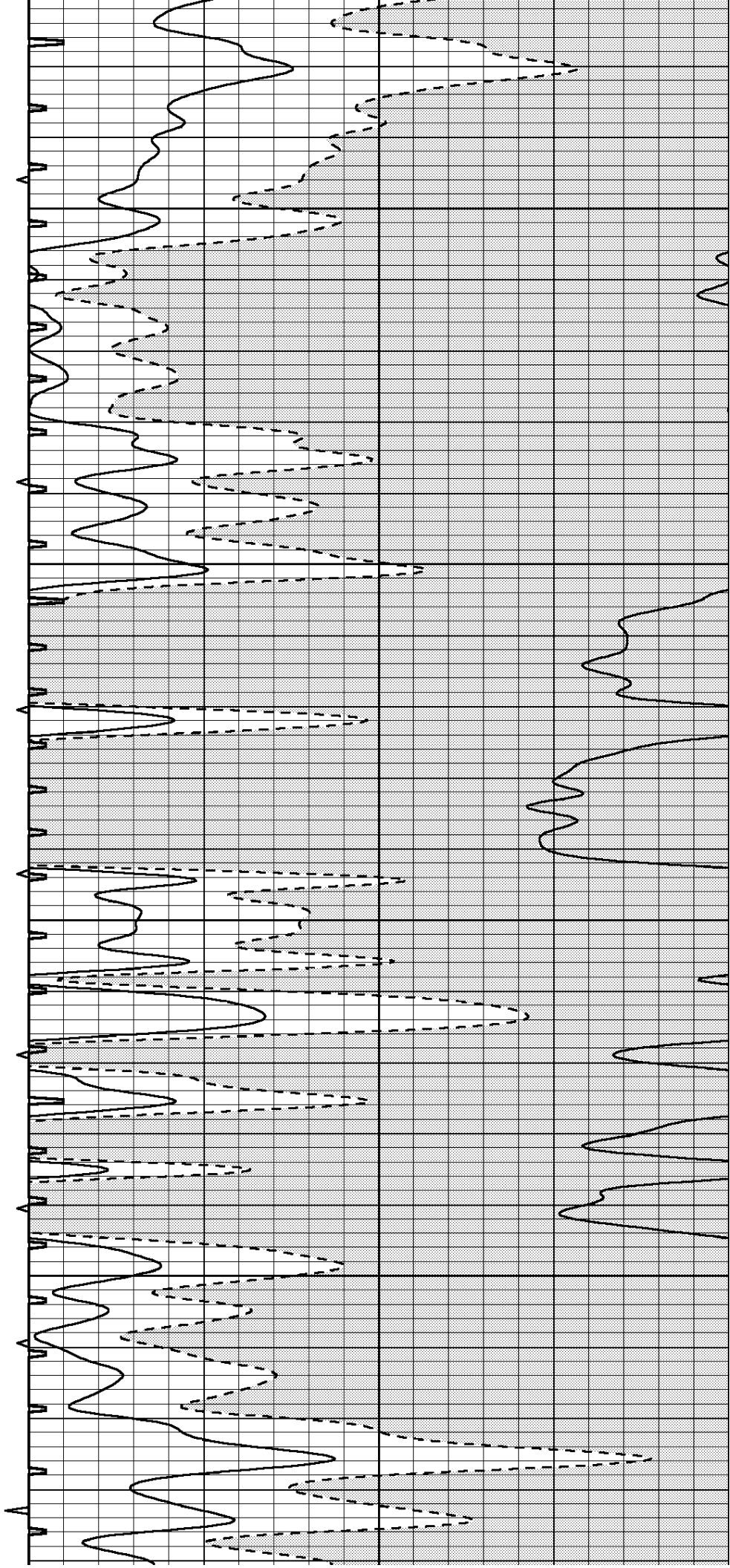


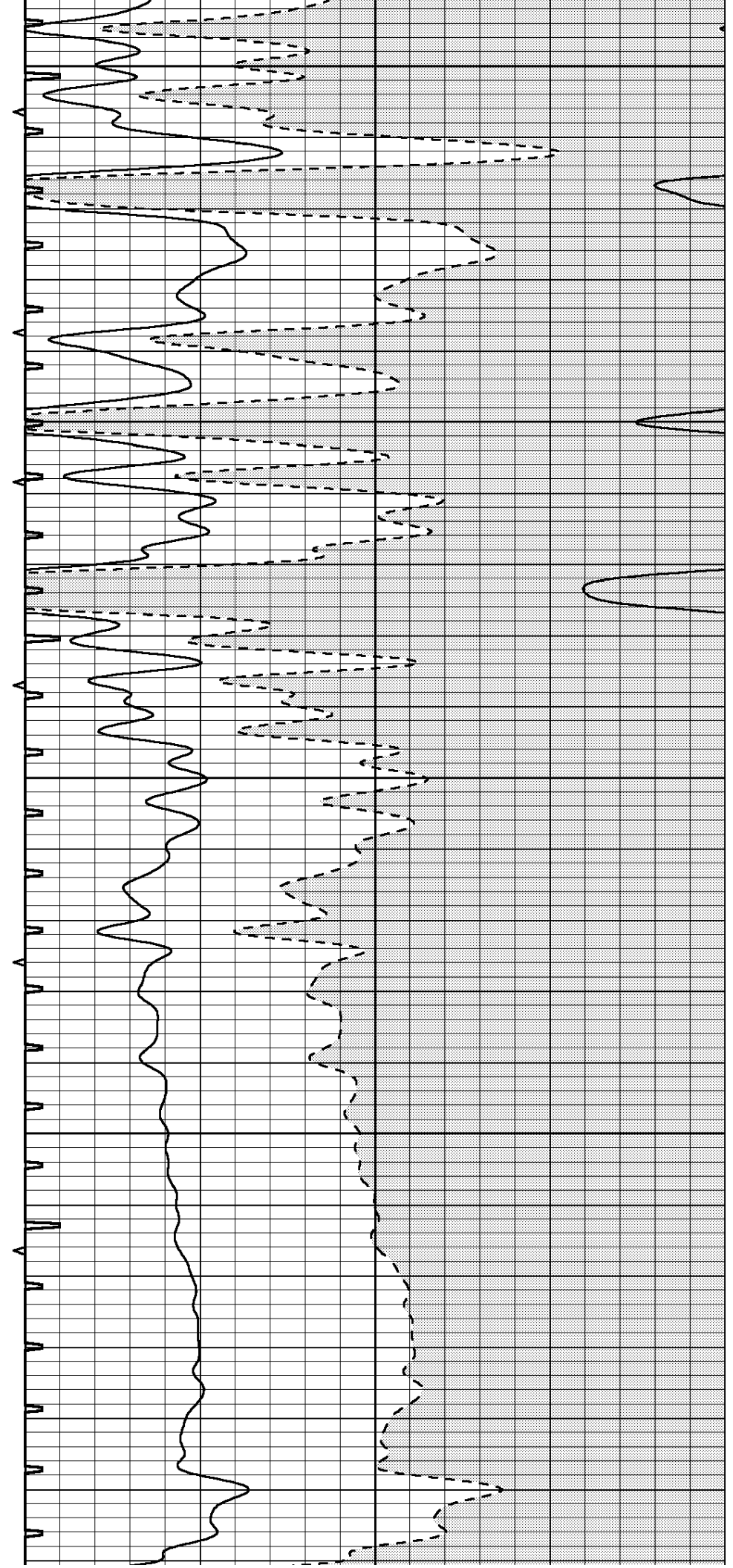
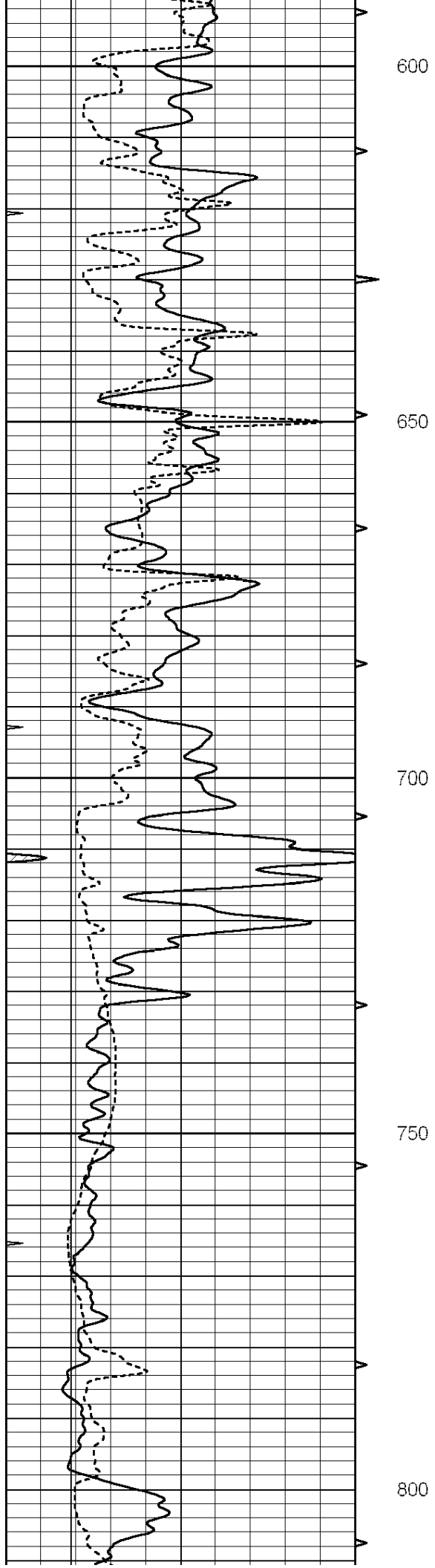
400

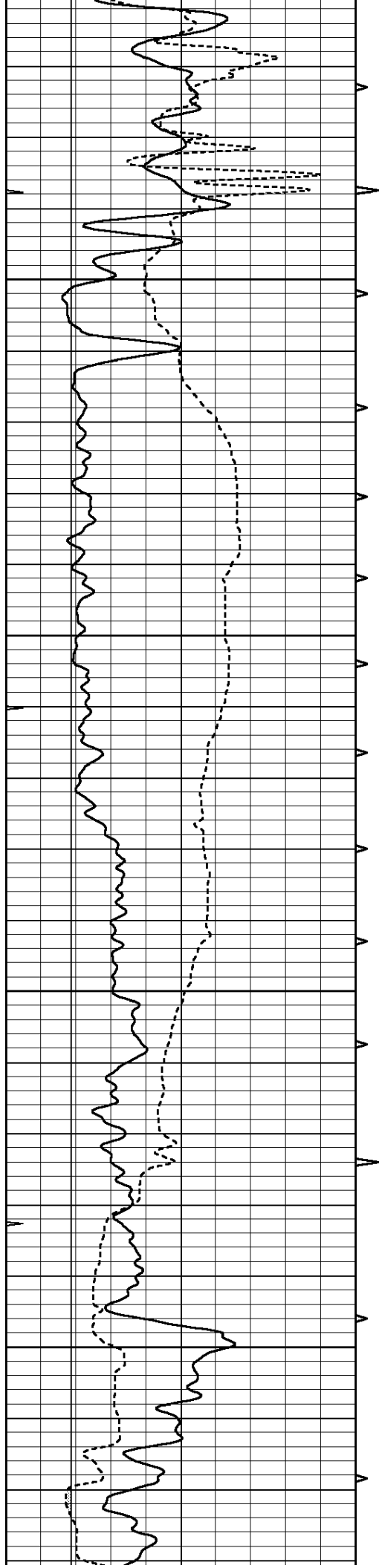
450

500

550





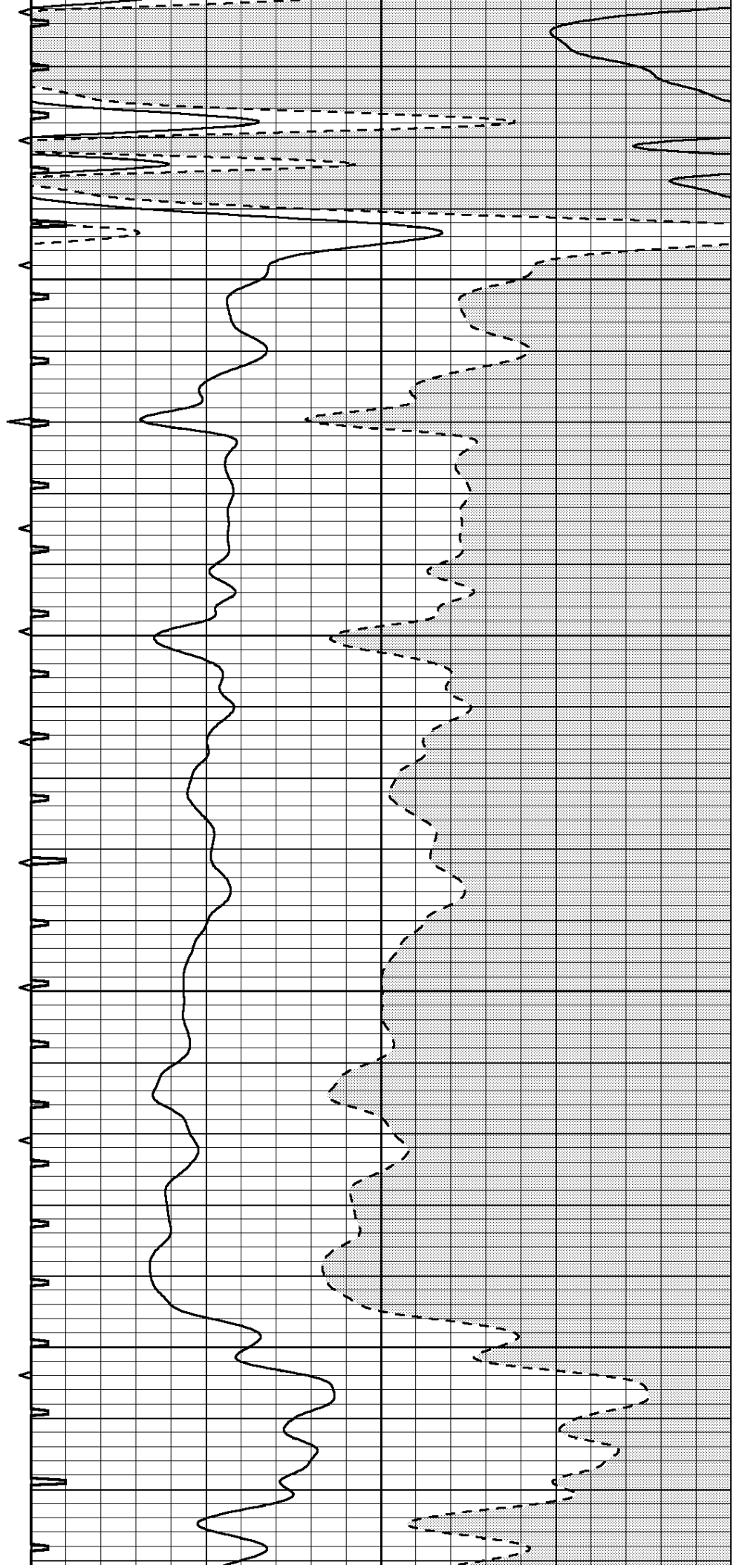


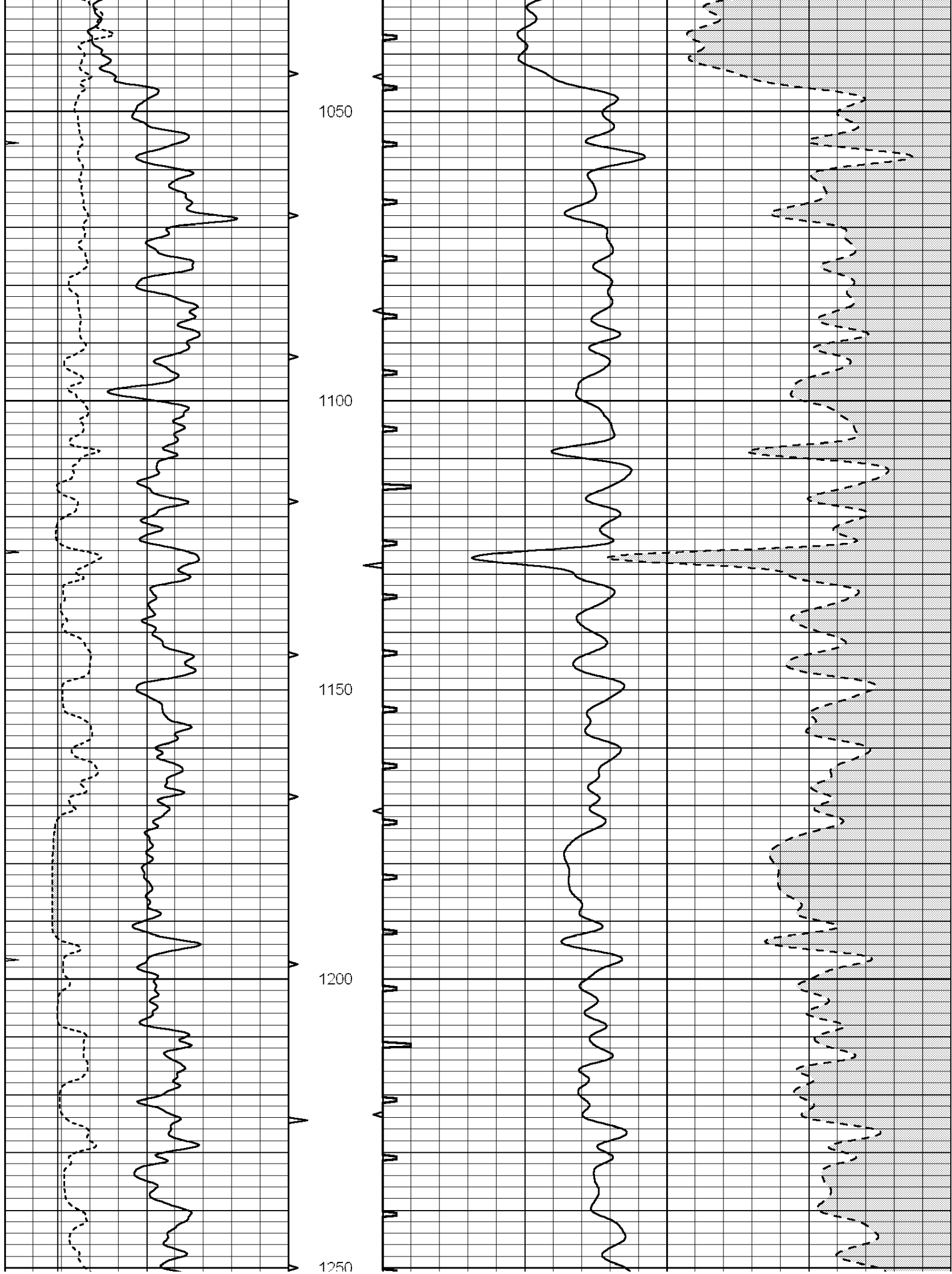
850

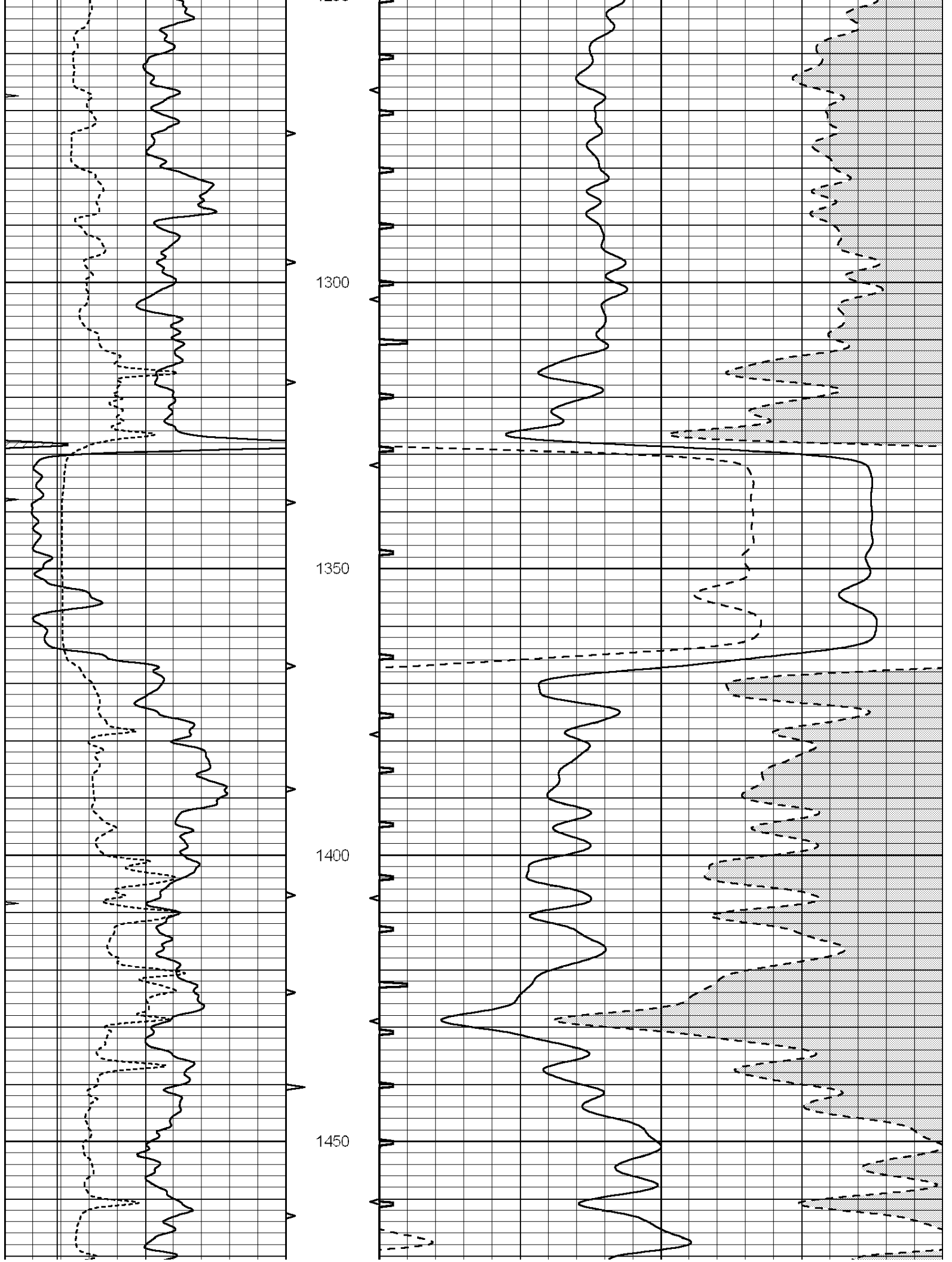
900

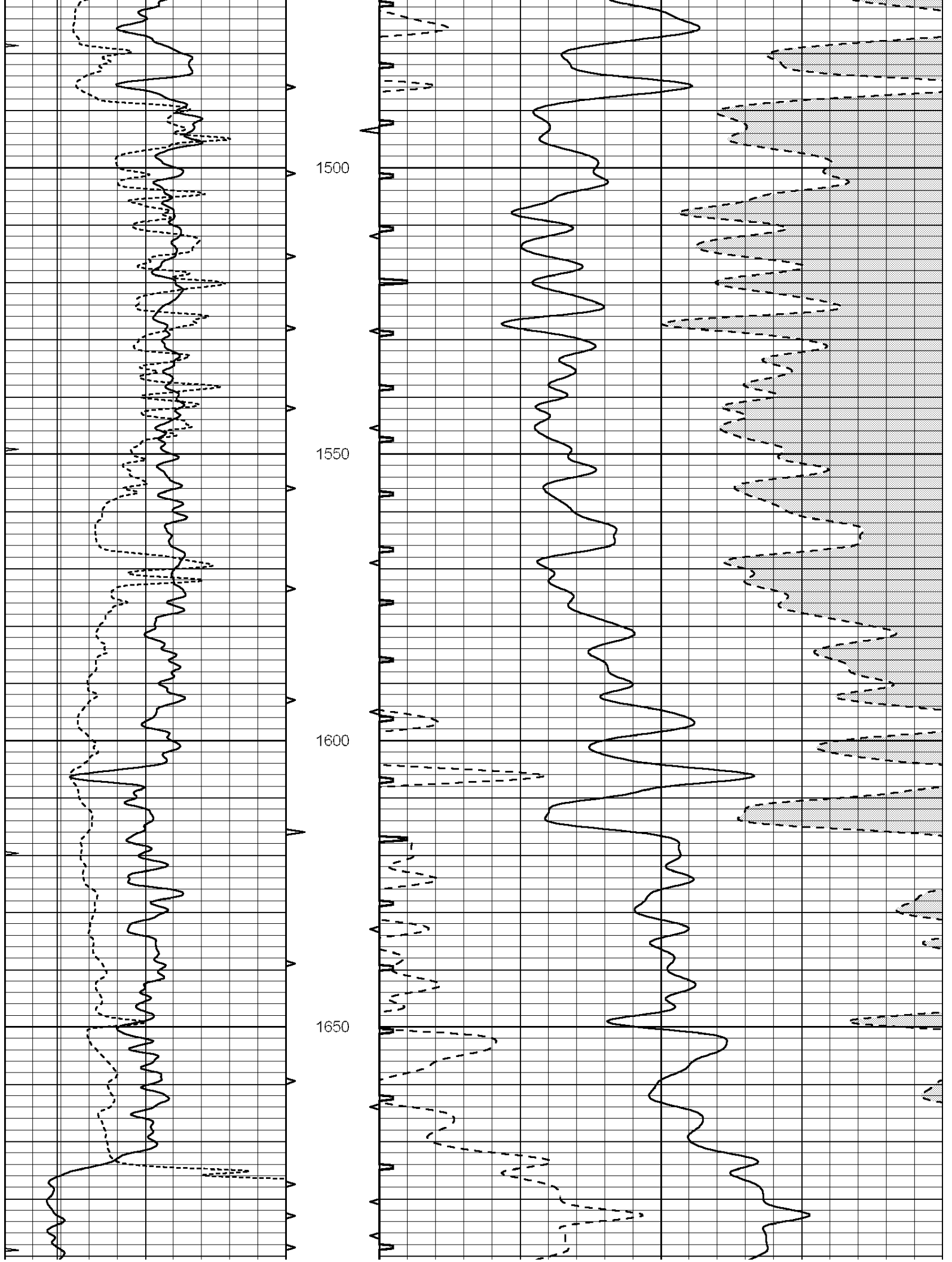
950

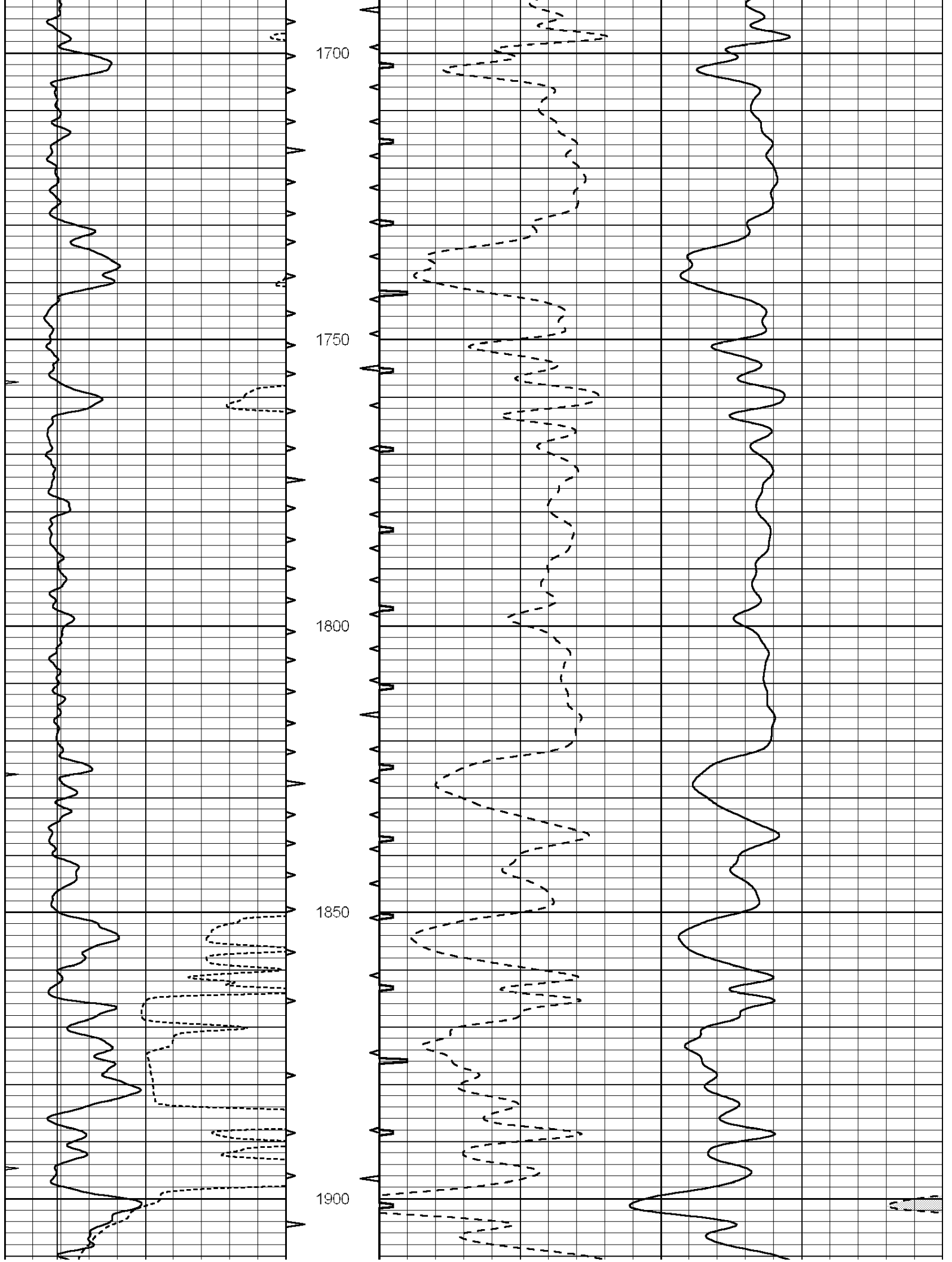
1000

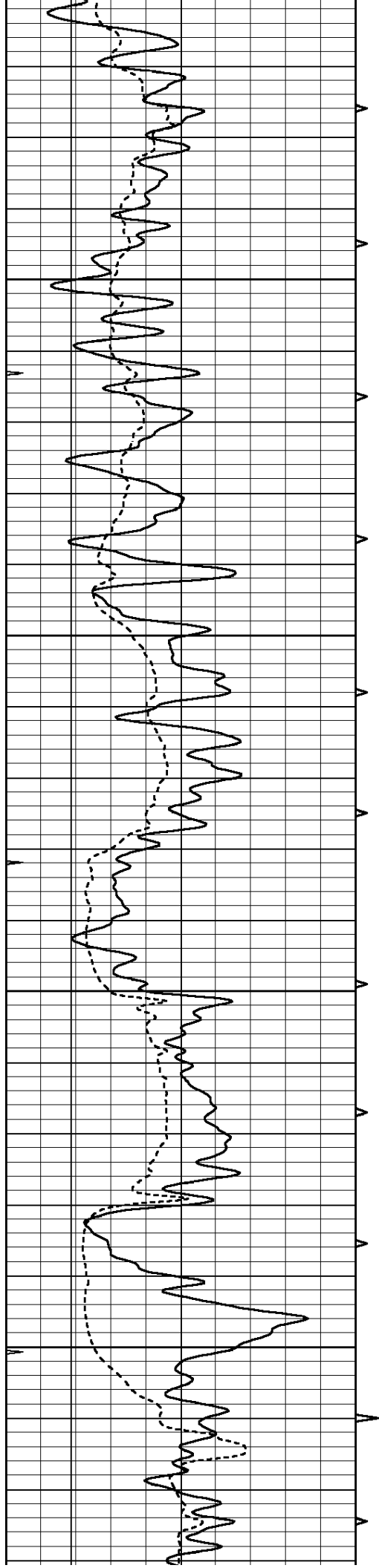










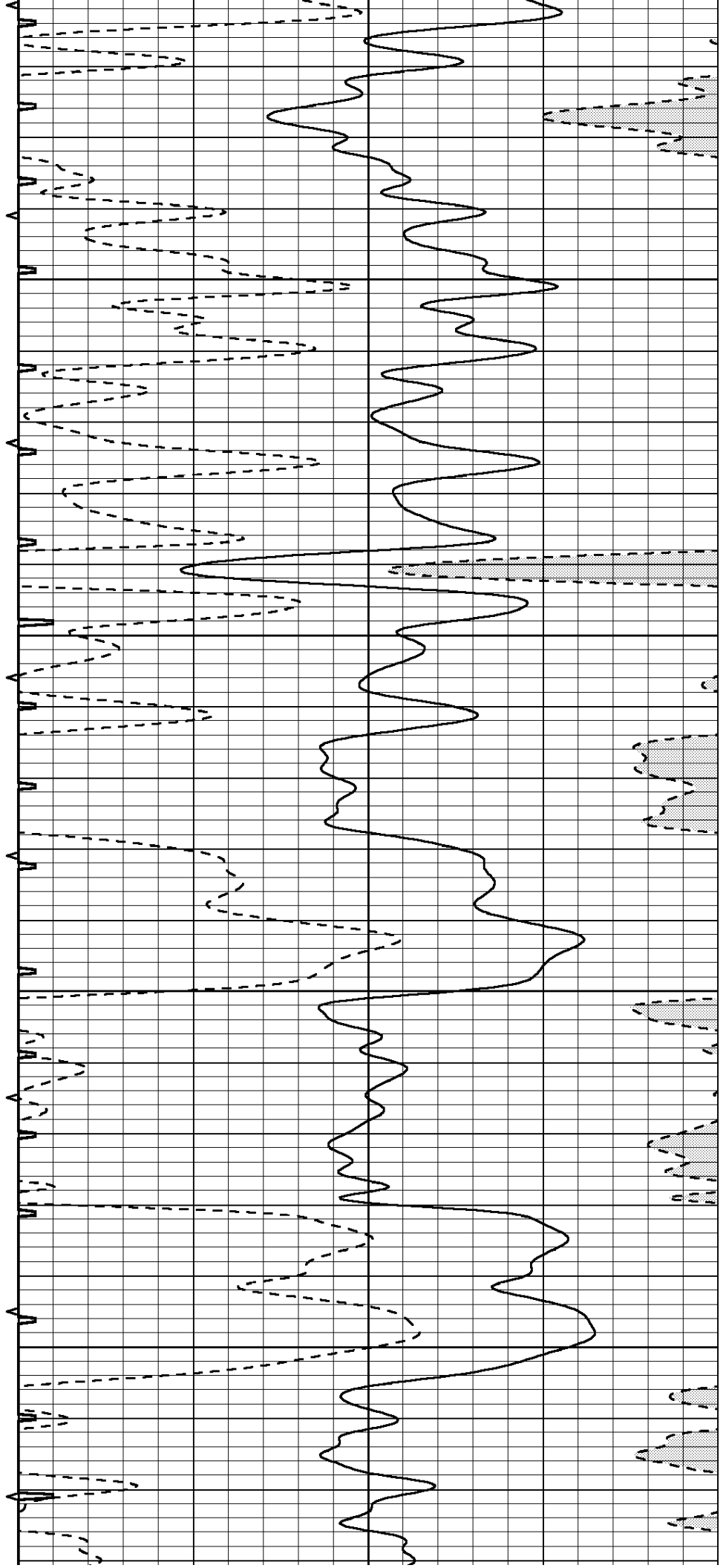


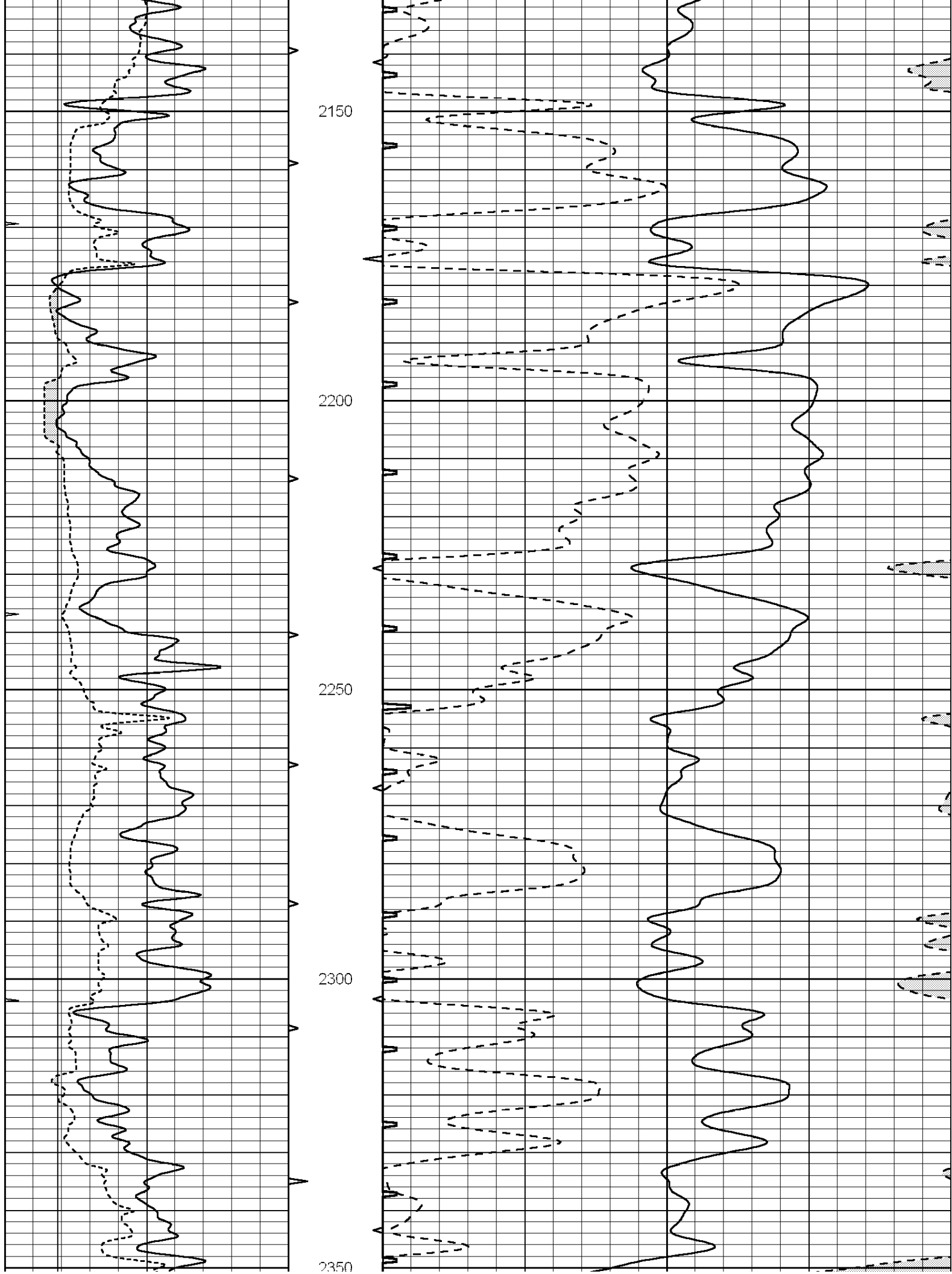
1950

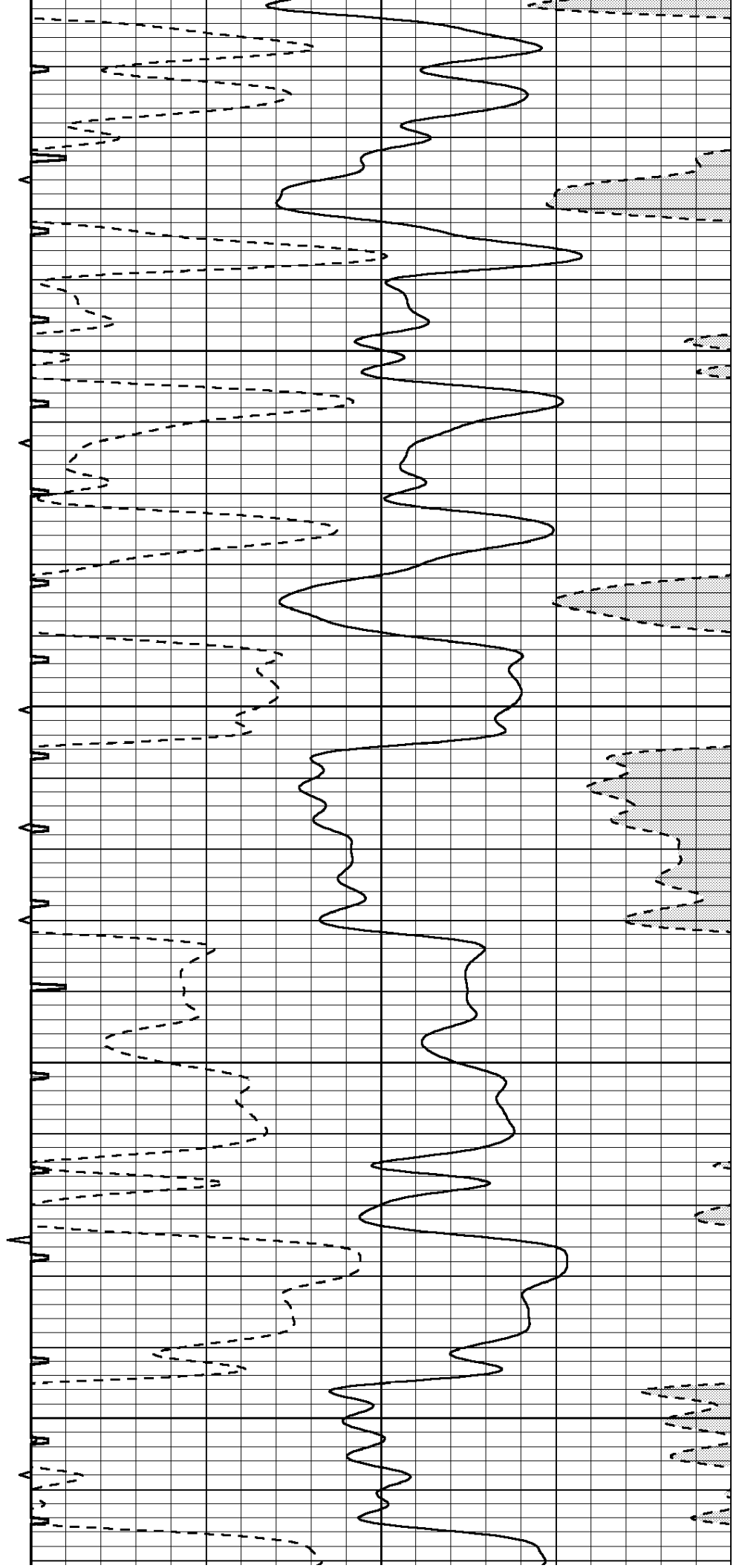
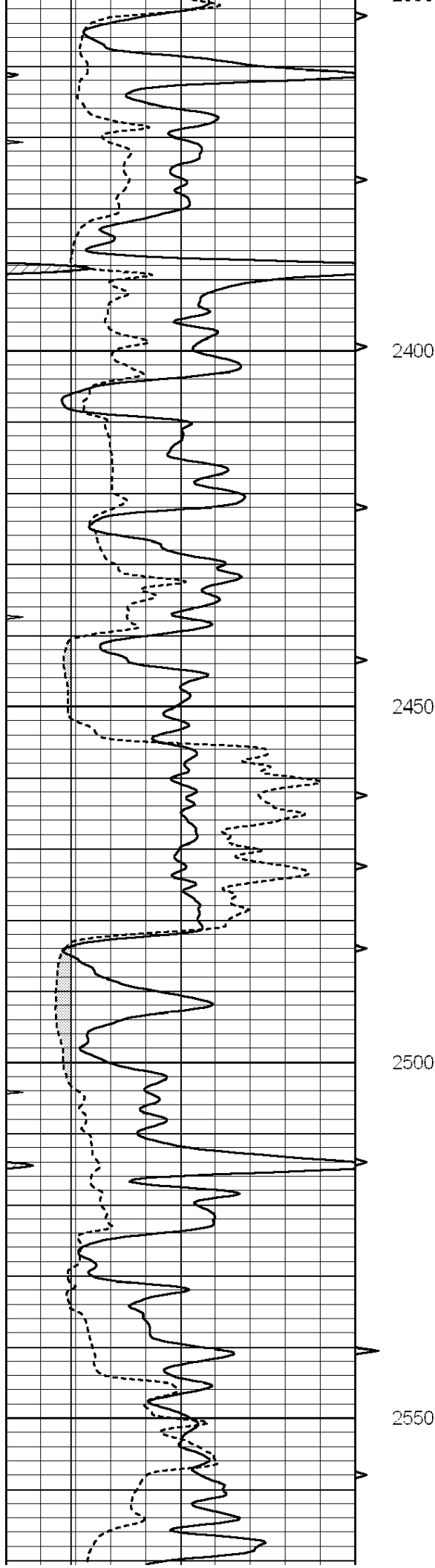
2000

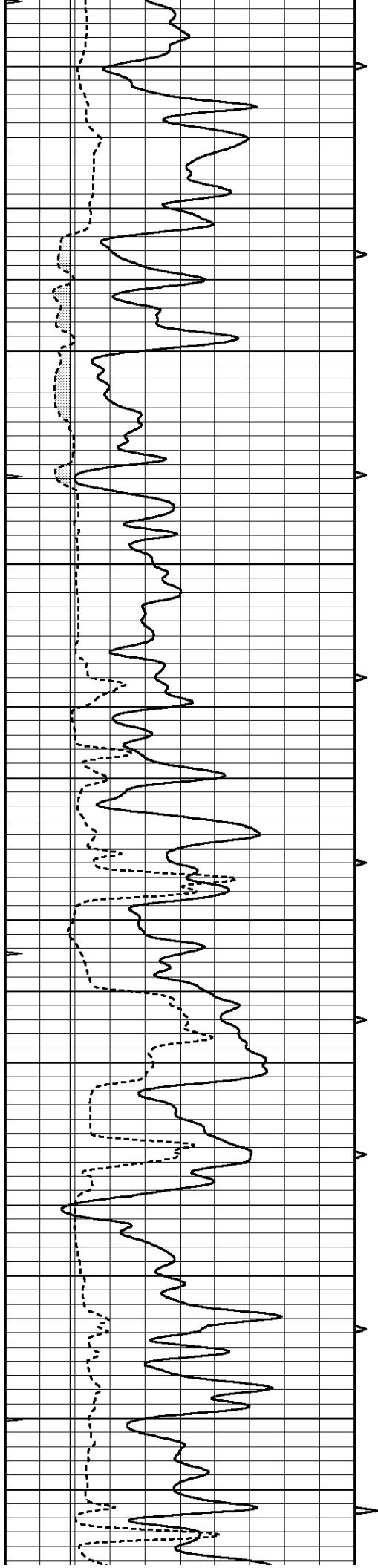
2050

2100







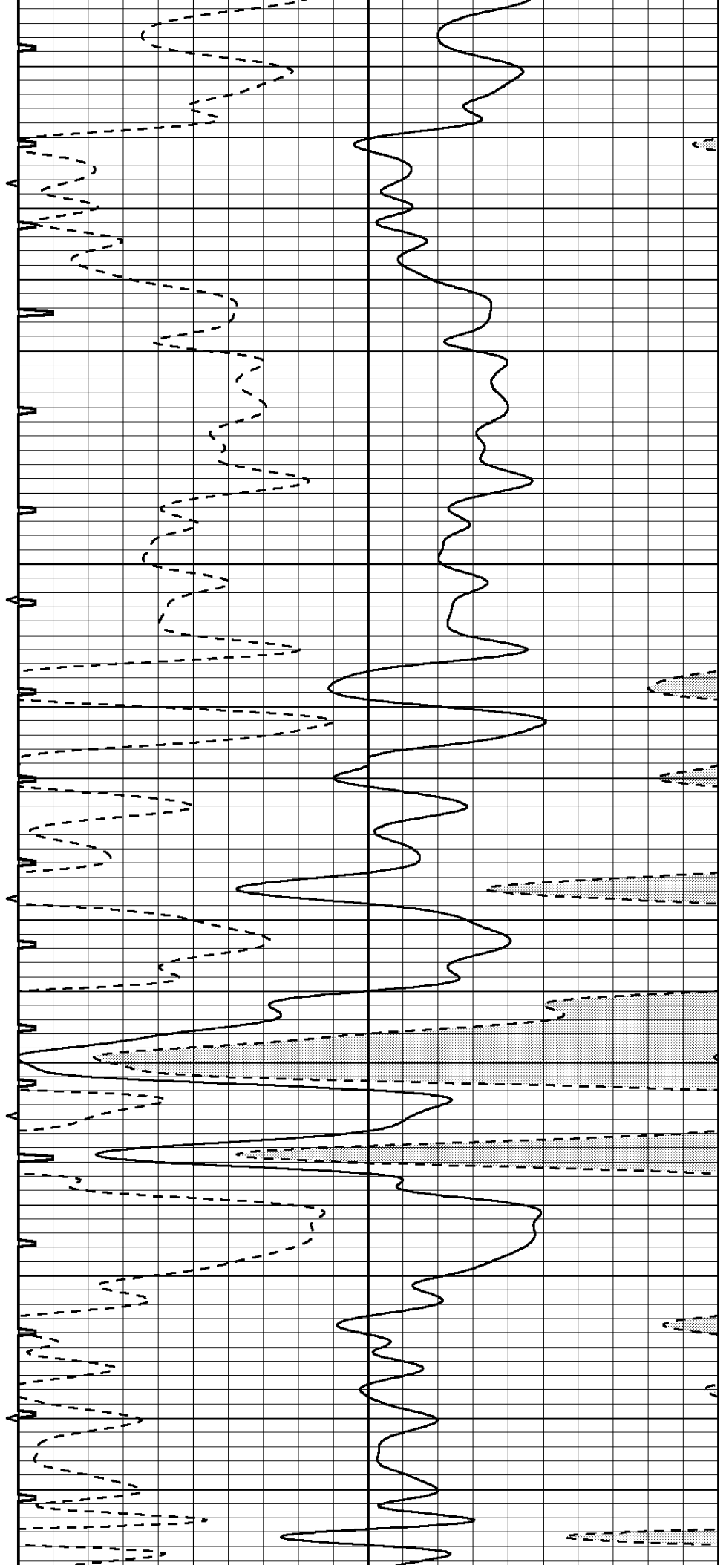


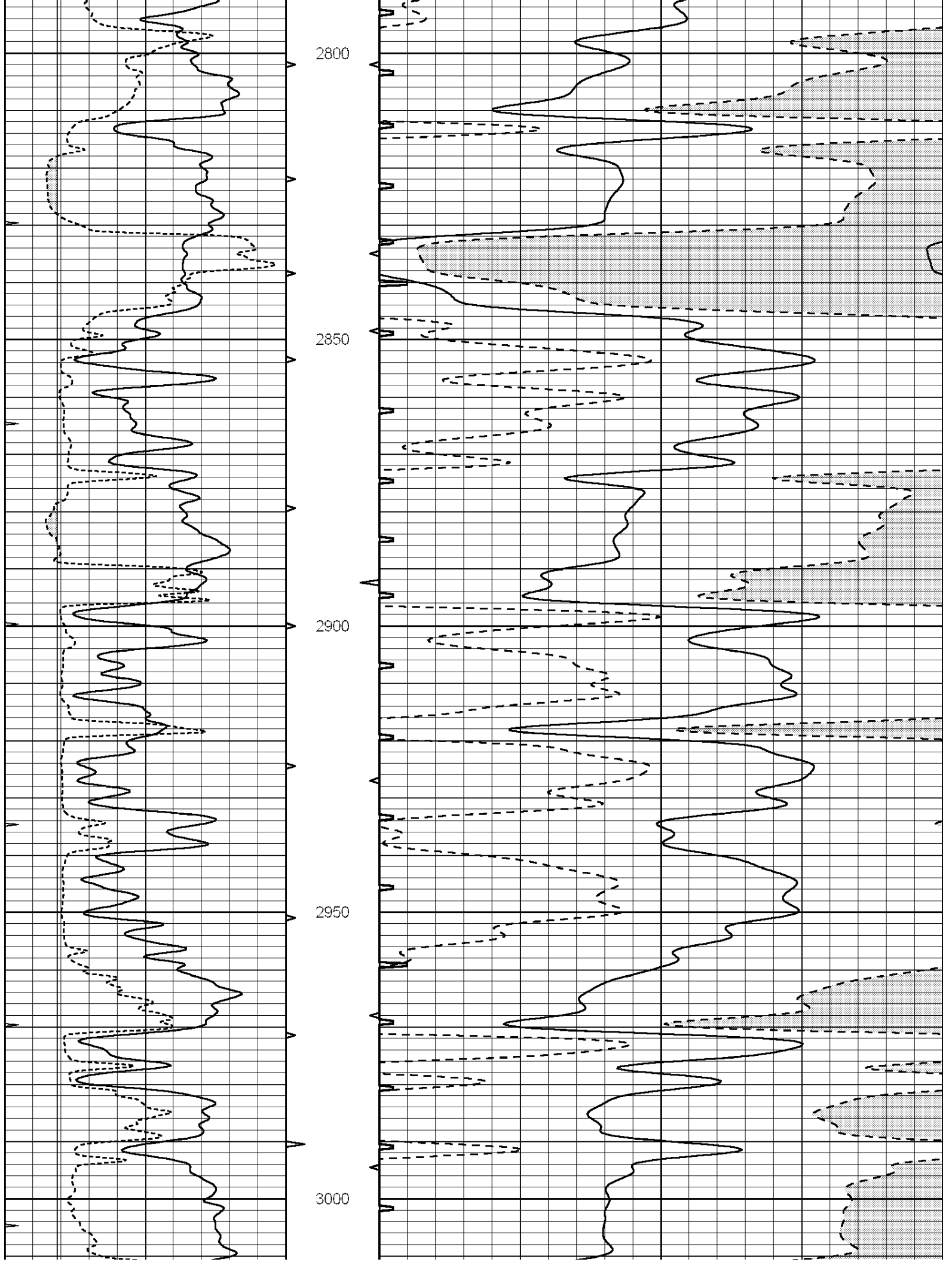
2600

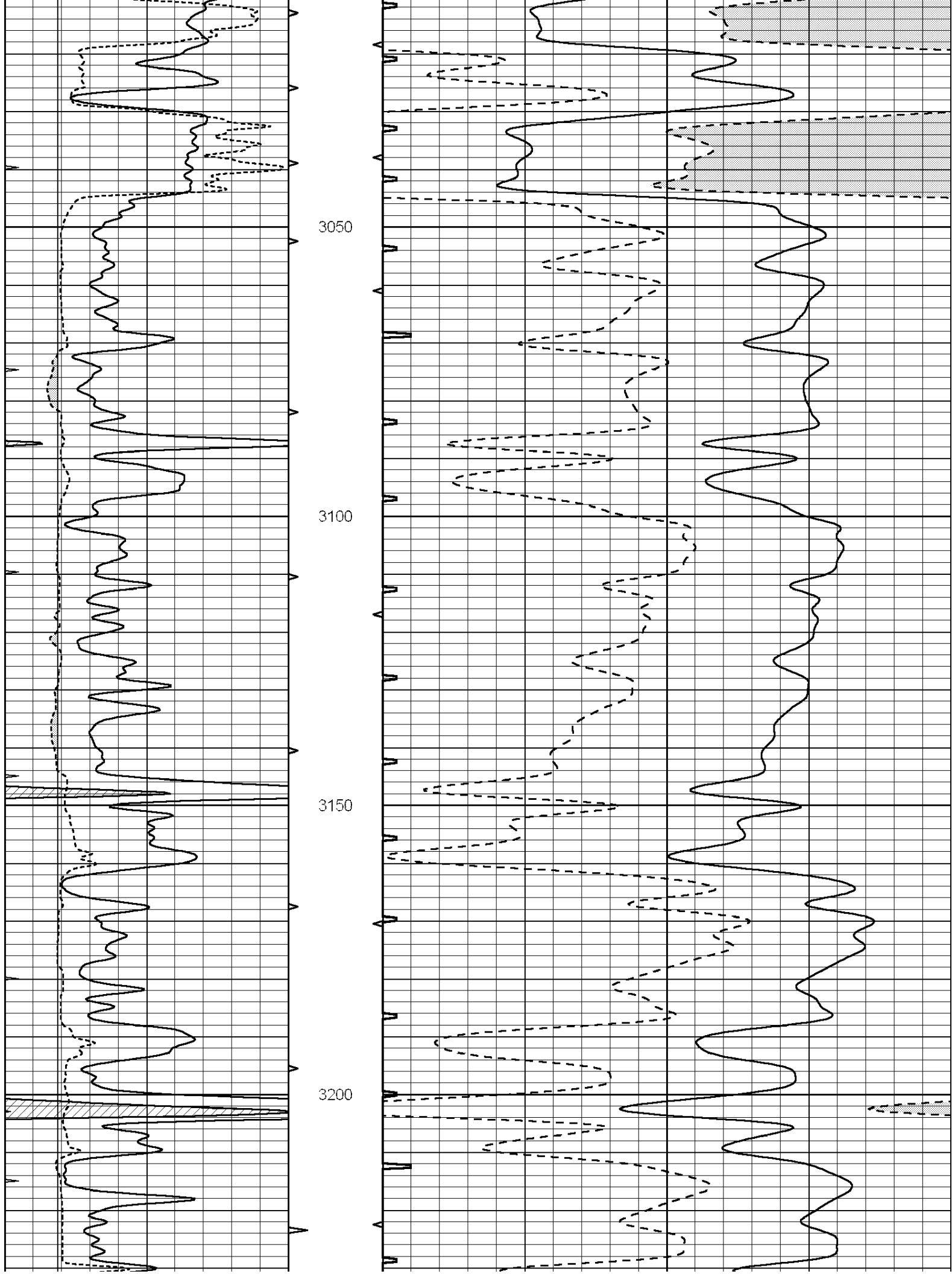
2650

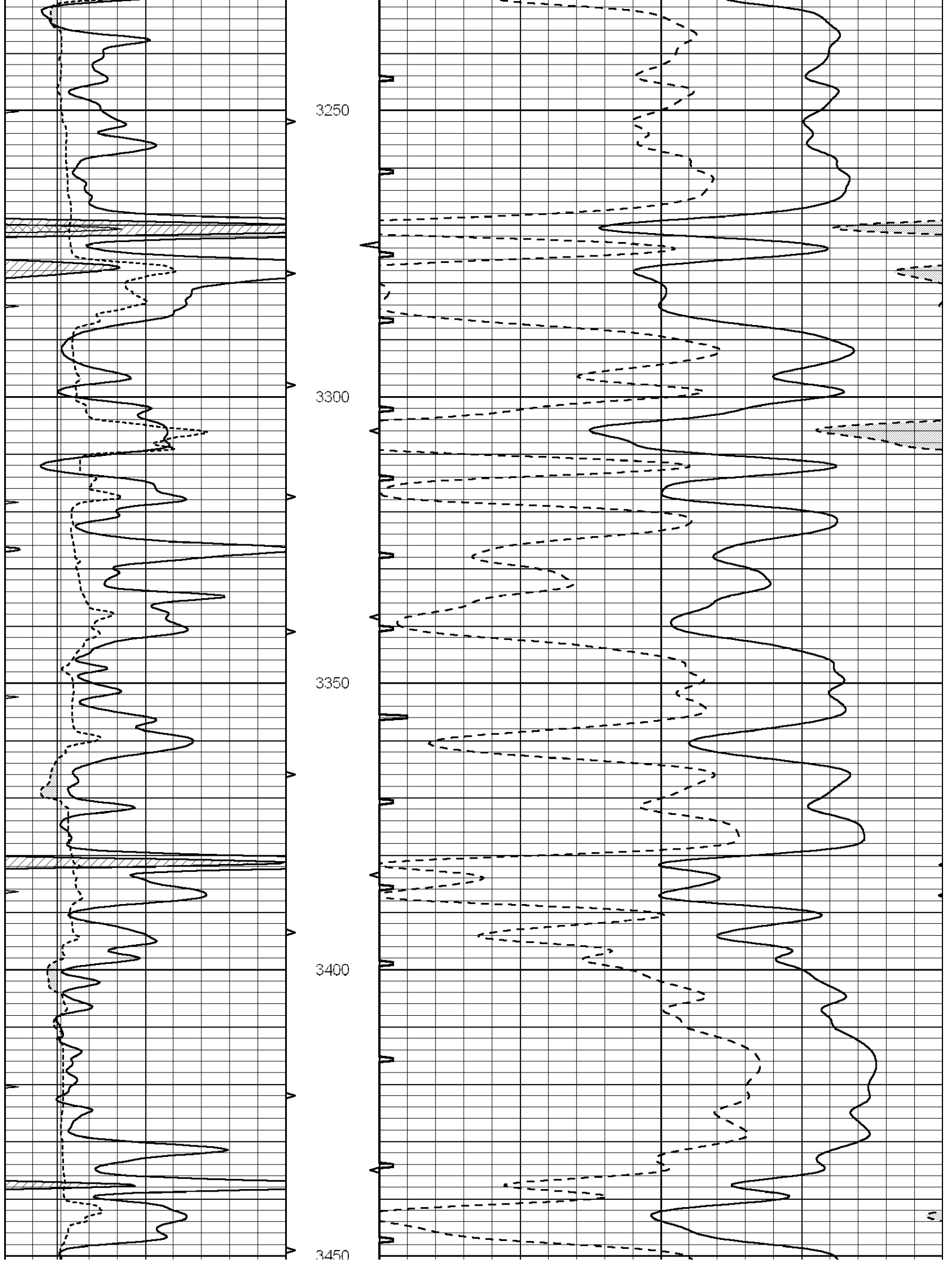
2700

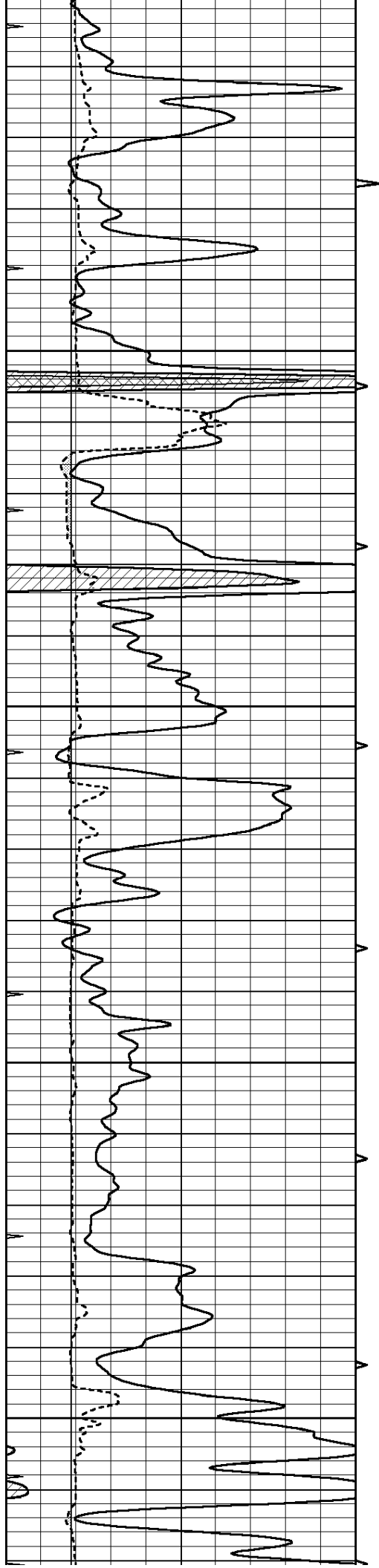
2750









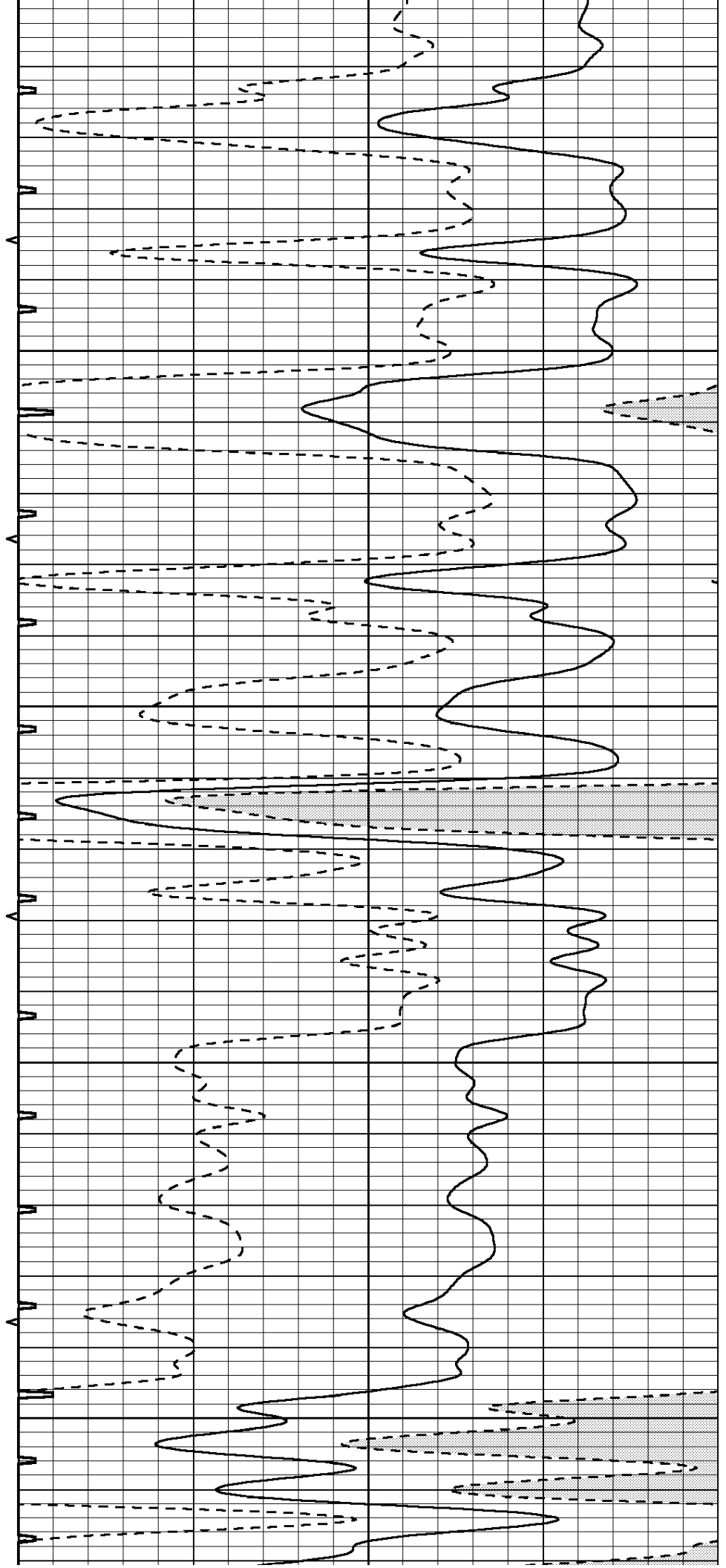


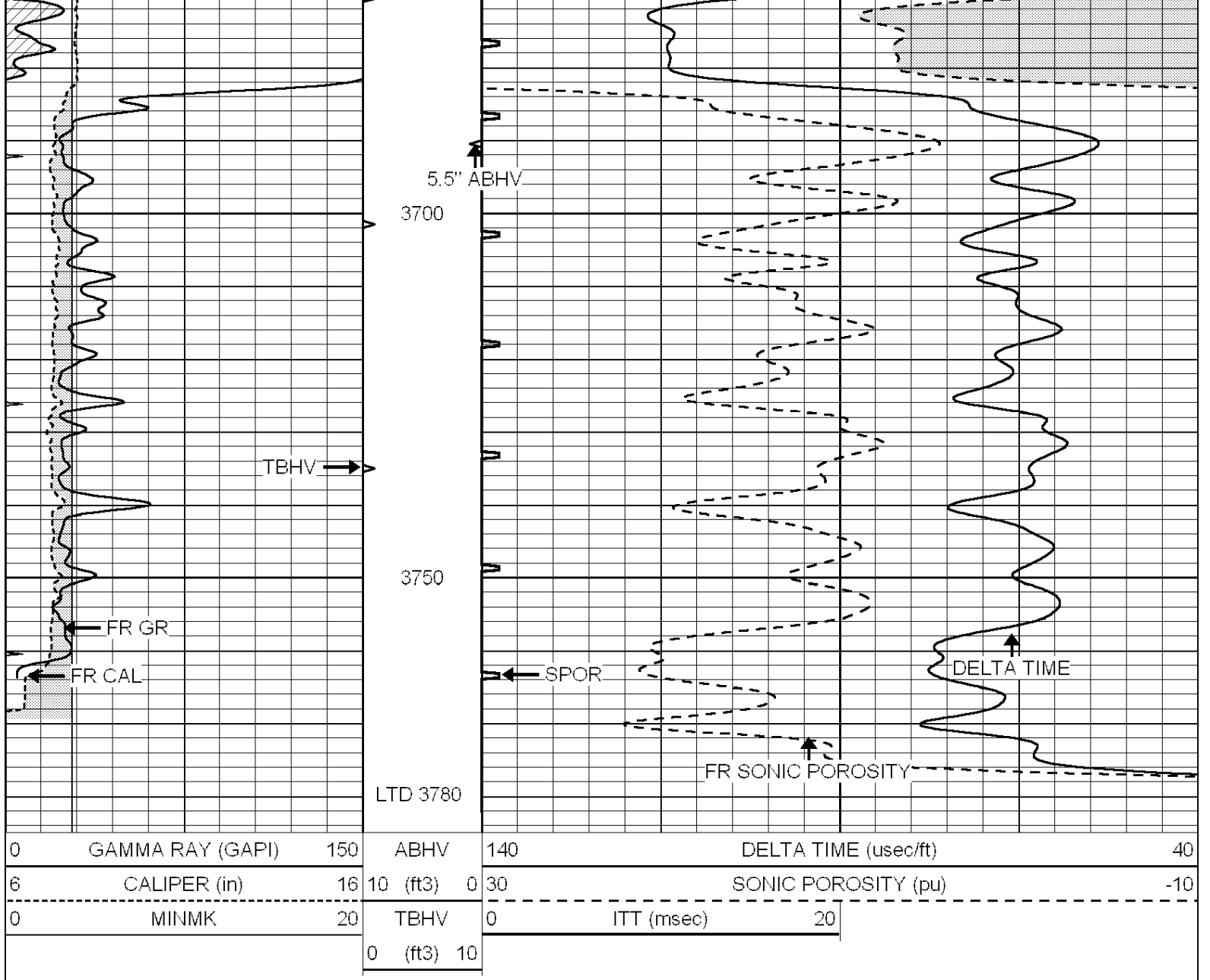
3500

3550

3600

3650



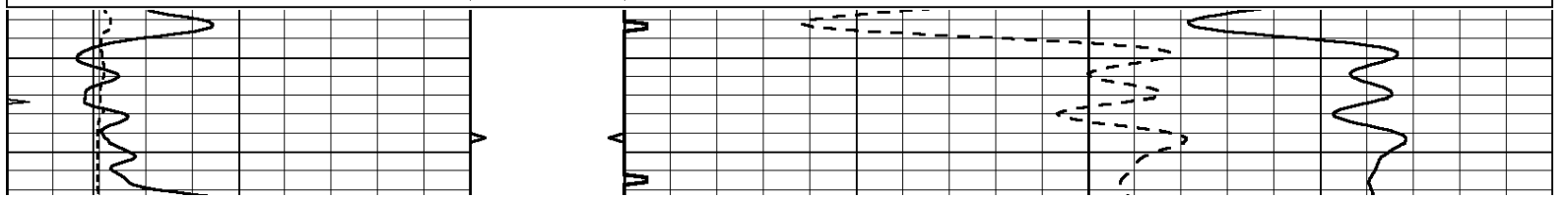


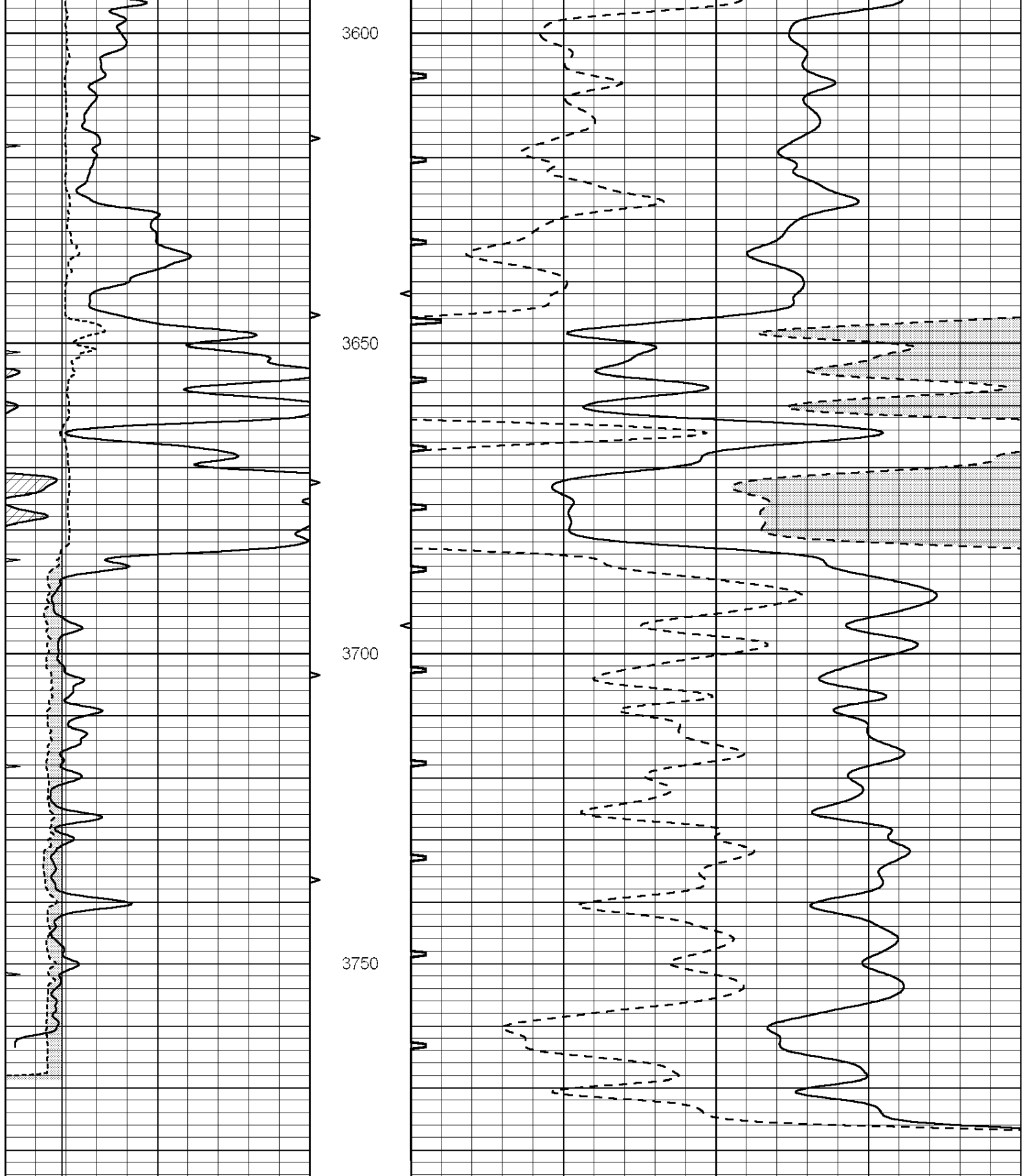
**COMPLETION
& PRODUCTION
SERVICES CO.**

REPEAT SECTION

Database File: 22274pe.db
 Dataset Pathname: pass5.2
 Presentation Format: slt
 Dataset Creation: Sat Mar 29 11:15:44 2014 by Calc SOC 120430
 Charted by: Depth in Feet scaled 1:240

| | | | | | | |
|---|------------------|-----|------------|-----|----------------------|-----|
| 0 | GAMMA RAY (GAPI) | 150 | ABHV | 140 | DELTA TIME (usec/ft) | 40 |
| 6 | CALIPER (in) | 16 | 10 (ft3) 0 | 30 | SONIC POROSITY (pu) | -10 |
| 0 | MINMK | 20 | TBHV | 0 | ITT (msec) | 20 |
| | | | 0 (ft3) 10 | | | |





| | | | | | | | |
|---|------------------|-----|----------|-----|----------------------|---------------------|-----|
| 0 | GAMMA RAY (GAPI) | 150 | ABHV | 140 | DELTA TIME (usec/ft) | 40 | |
| 6 | CALIPER (in) | 16 | 10 (ft3) | 0 | 30 | SONIC POROSITY (pu) | -10 |
| 0 | MINMK | 20 | TBHV | 0 | ITT (msec) | 20 | |
| | | | 0 (ft3) | 10 | | | |