



MIDWEST SURVEYS
 LOGGING - PERFORATING - CONSULTING SERVICES
 P.O. Box 66, Oskawatomie, KS 66064
 913.735.2128

GAMMA RAY / NEUTRON / CCL

File No.

Company **SCZ Resources, LLC.**

Well **Kendall Dice No. I-19**

Field **Humbolt - Chanute**

County **Allen** State **Kansas**

Location **330' FNL & 1650' FWL**

Other Services **Perforate**

Sec. 27 Typ. 26s Rge. 18e

Perforant Depth **GL** Elevation **NA**

Log Measured From **GL**

Drilling Measured From **GL**

Elevation **KB NA**

D.F. NA

GL NA

Date **04-09-2014**

Run Number **One**

Depth Driller **880.0**

Depth Logger **850.5**

Bottom Logged Interval **849.5**

Top Log Interval **20.0**

Fluid Level **Full**

Type Fluid **Water**

Density / Viscosity **NA**

Salinity - PPM Cl **NA**

Max Recorded Temp **NA**

Estimated Cement Top **0.0**

Equipment No. **102** Location **Oskawatomie**

Recorded By **Gary Windisch**

Witnessed By **Jorge Ranz**

RUN **BOREHOLE RECORD**

NO **BIT**

FROM **FROM**

TO **TO**

SIZE **SIZE**

WGT. **WGT.**

FROM **FROM**

TO **TO**

One **9.875"**

0.0 **20.0**

7.00" **17.0"**

0.0 **0.0**

890.0 **2.875"**

6.5 # **0.0**

850.0 **850.0**

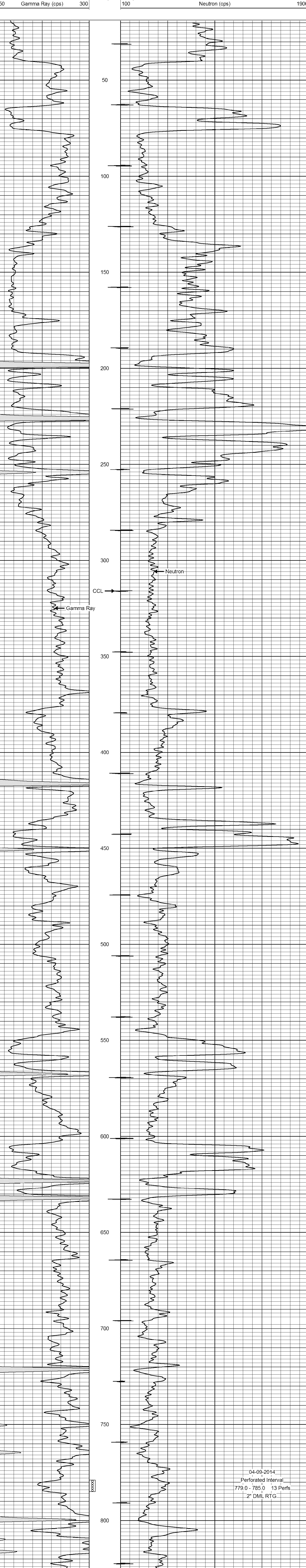
<<< Fold Here >>>

All interpretations are opinions based on inferences from electrical or other measurements and we cannot and do not guarantee the accuracy or correctness of any interpretation, and we shall not, except in the case of gross or willful negligence on our part, be liable or responsible for any loss, costs, damages, or expenses incurred or sustained by anyone resulting from any interpretation made by any of our officers, agents or employees. These interpretations are also subject to our general terms and conditions set out in our current Price Schedule.

Comments

Drilling Contractor : JTC Oil, Inc.

Database File: dice19ik.db
 Dataset Pathname: pass1
 Presentation Format: gr-n-ccl
 Dataset Creation: Wed Apr 09 13:27:15 2014 by Log SCH 111116
 Charted by: Depth in Feet scaled 1:240



04-09-2014
 Perforated Interval
 779.0 - 785.0 13 Perfs.
 2" DML RTG

0 Gamma Ray (cps) 150

150 Gamma Ray (cps) 300

-1 CCL 1

100 Neutron (cps) 1900