



MIDWEST SURVEYS
 LOGGING - PERFORATING - CONSULTING SERVICES
 P.O. Box 88, Osawatomie, KS 66064
 913.755.2428

GAMMA RAY / NEUTRON / CCL

File No.

Company Piqua Petro, Inc.

Well Bruenger No. 8-14

Field Humboldt - Chanute

County Allen State Kansas

Location 3550' FSL & 2450' FEL

SW-NW-SW-NE

Sec. 14 Twp. 25S Rge. 17E

Permanent Datum GL

Log Measured From GL

Drilling Measured From GL

Date 10-27-2014

Run Number One

Depth Diller 874.0

Depth Logger 858.7

Bottom Logged Interval 857.7

Top Log Interval 200.0

Fluid Level Full

Type Fluid Water

Density / Viscosity NA

Salinity - PPM Cl NA

Max. Recorded Temp NA

Estimated Cement Top 0.0

Equipment No. Location 107 Osawatomie

Recorded By Steve Winkisch

Witnessed By Monica Lair

BORE-HOLE RECORD				CASINGS RECORD			
Run	BIT No.	FROM	TO	SIZE	WGT.	FROM	TO
One	9.875"	0.0	22.0	7.00"	17.0#	0.0	22.0
Two	5.625"	22.0	874.0	2.875"	6.5#	0.0	870.0

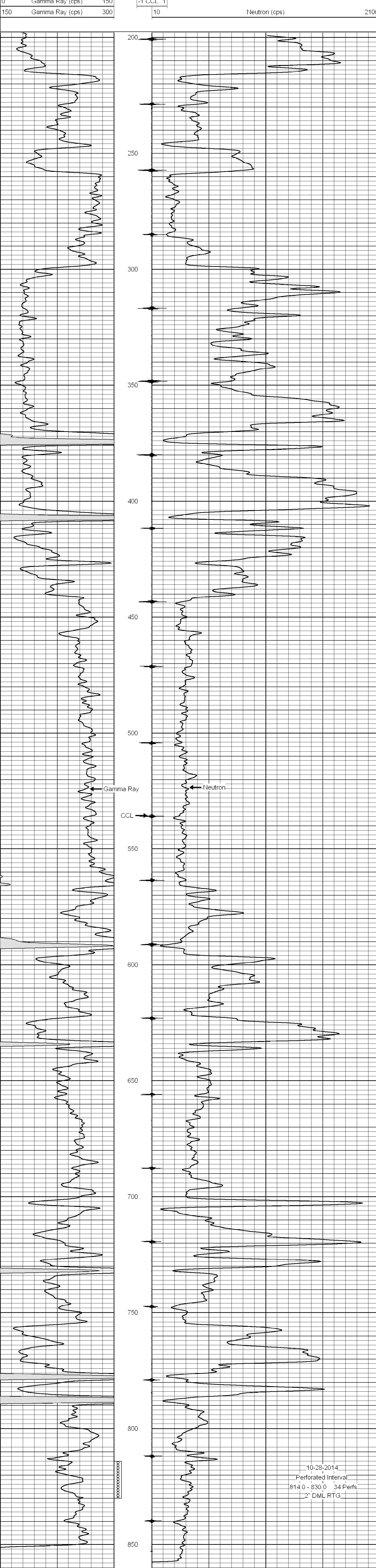
<<< Fold Here >>>

All interpretations are opinions based on inferences from electrical or other measurements and we cannot and do not guarantee the accuracy or correctness of any interpretation, and we shall not, except in the case of gross or willful negligence on our part, be liable or responsible for any loss, costs, damages, or expenses incurred or sustained by anyone resulting from any interpretation made by any of our officers, agents or employees. These interpretations are also subject to our general terms and conditions set out in our current Price Schedule.

Comments

Drilling Contractor :
 John Leis Oil Services

Database File: bruenger 8-14.db
 Dataset Pathname: pass1
 Presentation Format: gr-n-ccl
 Dataset Creation: Tue Oct 28 11:33:59 2014 by Log SCH 111116
 Charted by: Depth in Feet scaled 1:240



BORE-HOLE RECORD				CASINGS RECORD			
Run	BIT No.	FROM	TO	SIZE	WGT.	FROM	TO
One	9.875"	0.0	22.0	7.00"	17.0#	0.0	22.0
Two	5.625"	22.0	874.0	2.875"	6.5#	0.0	870.0