



**GAMMA RAY
NEUTRON
COMPLETION LOG**

Company **G & J OIL COMPANY, INC.**
 Well **HIGH #14-1**
 Field **PERU-SEDAN**
 County **CHAUTAUQUA**
 State **KANSAS**

Company **G & J OIL COMPANY, INC.**
 Well **HIGH #14-1**
 Field **PERU-SEDAN**
 County **CHAUTAUQUA** State **KANSAS**

Location: **API # : 15-019-27486-00-00** Other Services
3768' FSL & 958' FEL
NE NW SE NE
SEC 33 TWP 34S RGE 12E
 Permanent Datum **GL** Elevation **880' EST**
 Log Measured From **GL** K.B.
 Drilling Measured From **GL** D.F.
 G.L. **880' EST**

Date	10-29-14		
Run Number	2 NW		
Depth Driller			
Depth Logger	1049.9'		
Top Log Interval	0		
Bottom Logged Interval	1049.9'		
Fluid Level	FULL		
Type Fluid	WATER		
Production Casing	2 7/8" @ TD	@	@
Max. Recorded Temp.			
Estimated Cement Top			
Calculated Cement Top			
Amount & Type Cement			
Amount & Type Admix			
Drilling Contractor			
Equipment Number	109		
Location			
Recorded By	SANBORN, G.		
Witnessed By	NUNNELEY, S.		

<<< Fold Here >>>

All interpretations are opinions based on inferences from electrical or other measurements and we cannot and do not guarantee the accuracy or correctness of any interpretation, and we shall not, except in the case of gross or willful negligence on our part, be liable or responsible for any loss, costs, damages, or expenses incurred or sustained by anyone resulting from any interpretation made by any of our officers, agents or employees. These interpretations are also subject to our general terms and conditions set out in our current Price Schedule.

Comments

THANK YOU

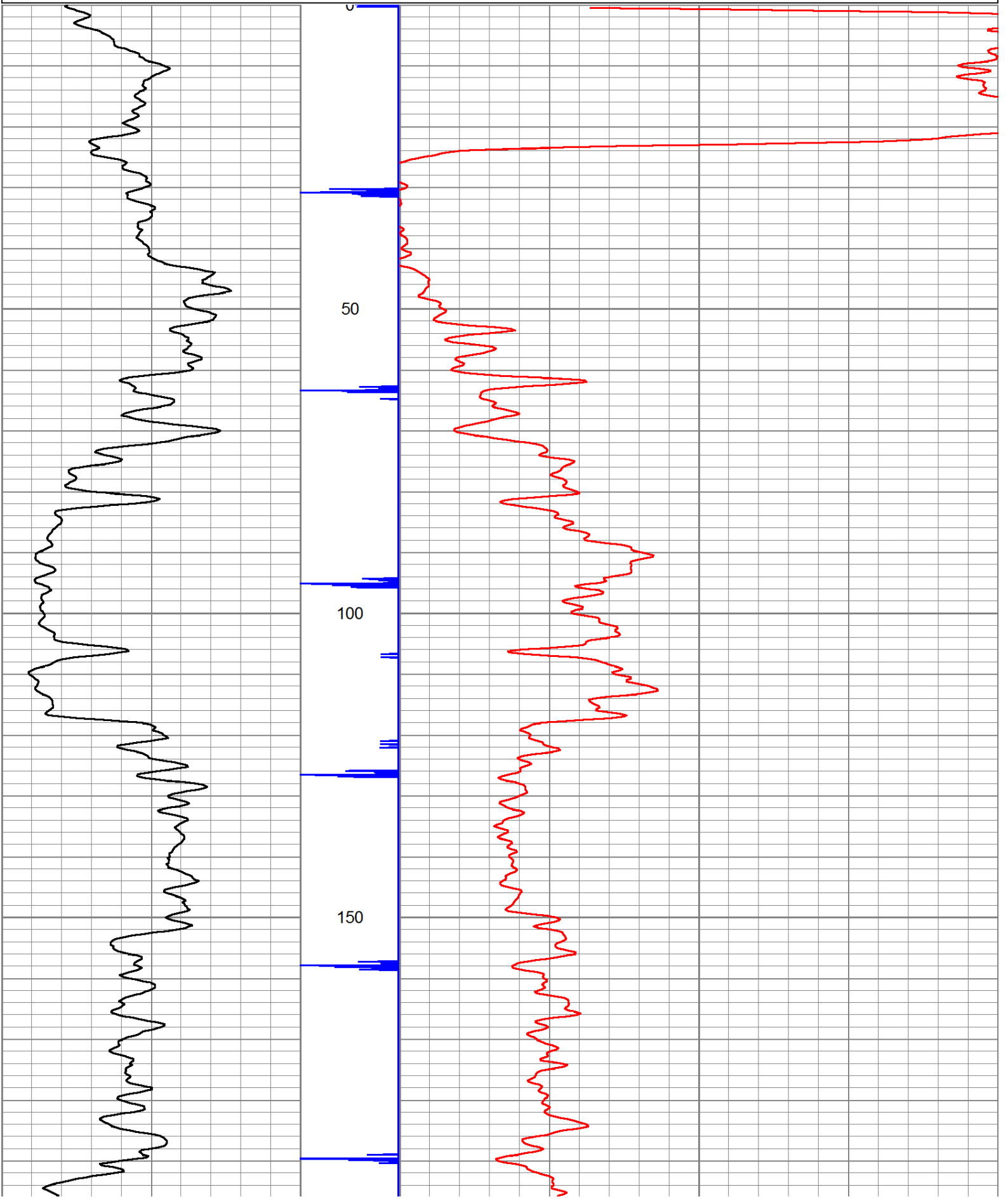
Sensor	Offset (ft)	Schematic	Description	Len (ft)	OD (in)	Wt (lb)

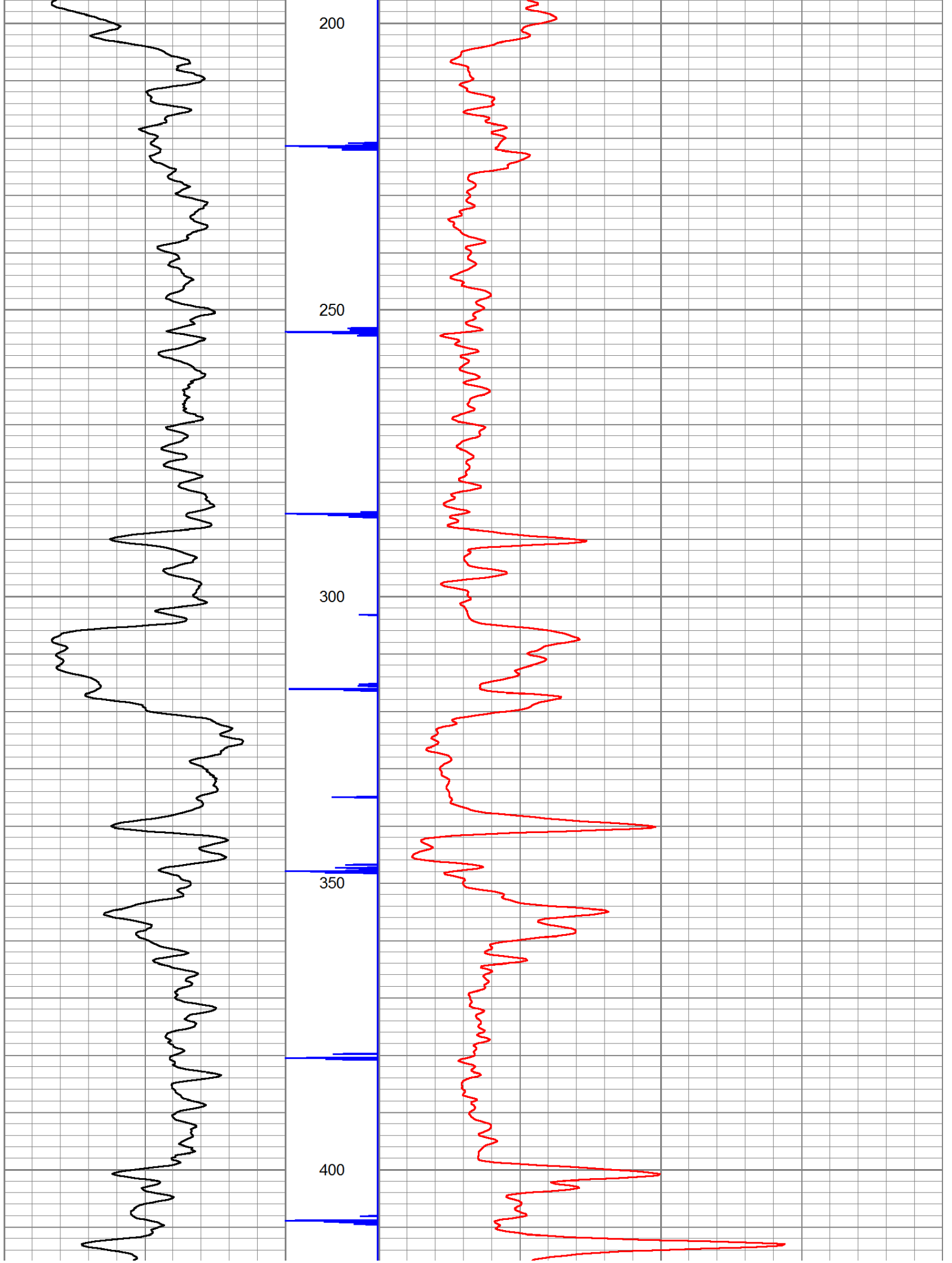
GR	7.59		GR-TITAN_169 (TIT169_001) Titan 1 11/16" Gamma Ray	4.75	1.69	20.00
CCL	5.05		CCL-TITAN_169 (TIT169) Titan 1 11/16" Logging CCL	1.83	1.69	7.50
NEU	0.63		NEU-TITAN (TIT801) TITAN 1 11/16" Neutron	4.33	1.69	25.00

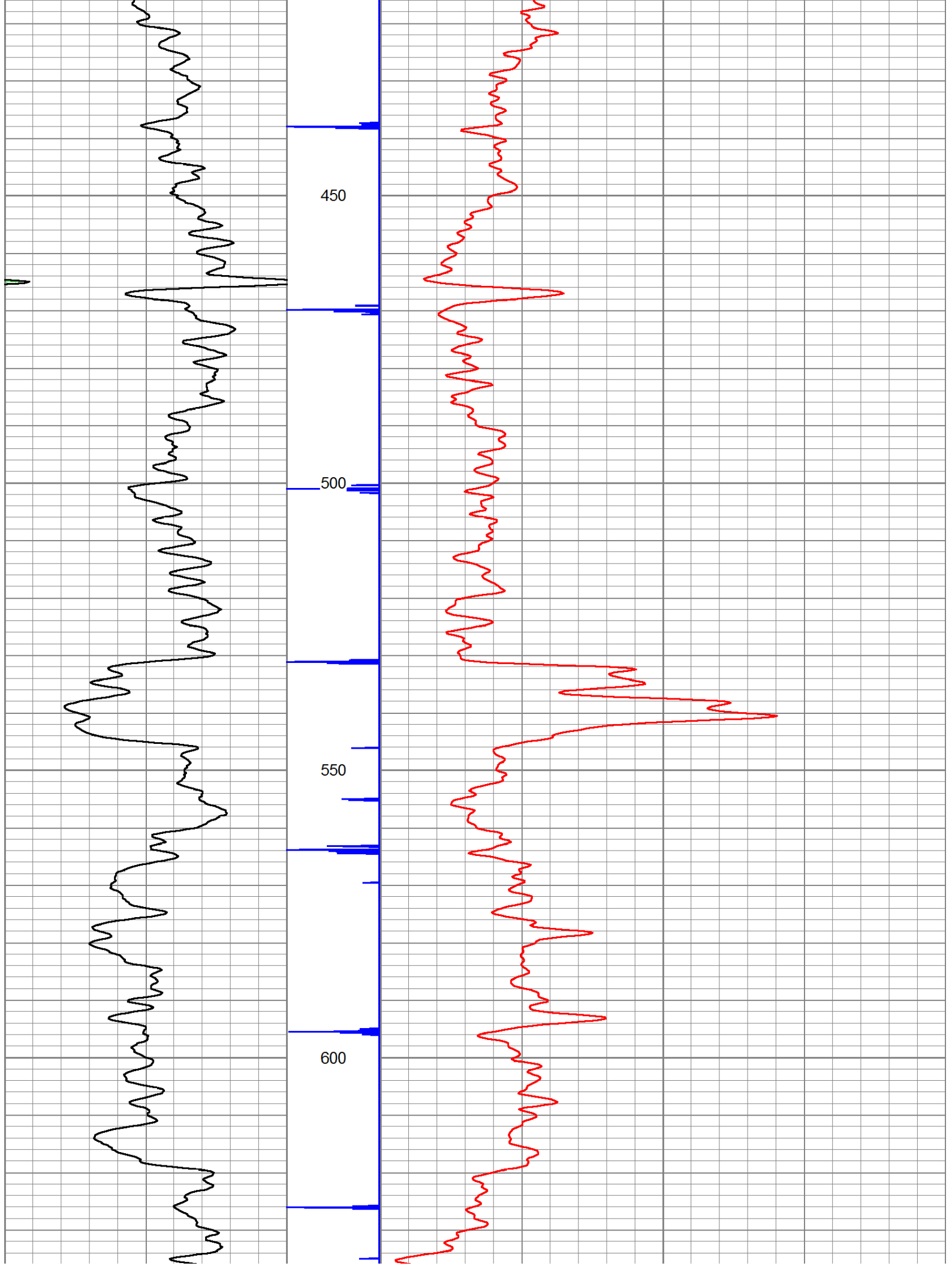
Dataset: high #14-1.db: field/well/run1/pass1
 Total Length: 10.92 ft
 Total Weight: 52.50 lb
 O.D.: 1.69 in

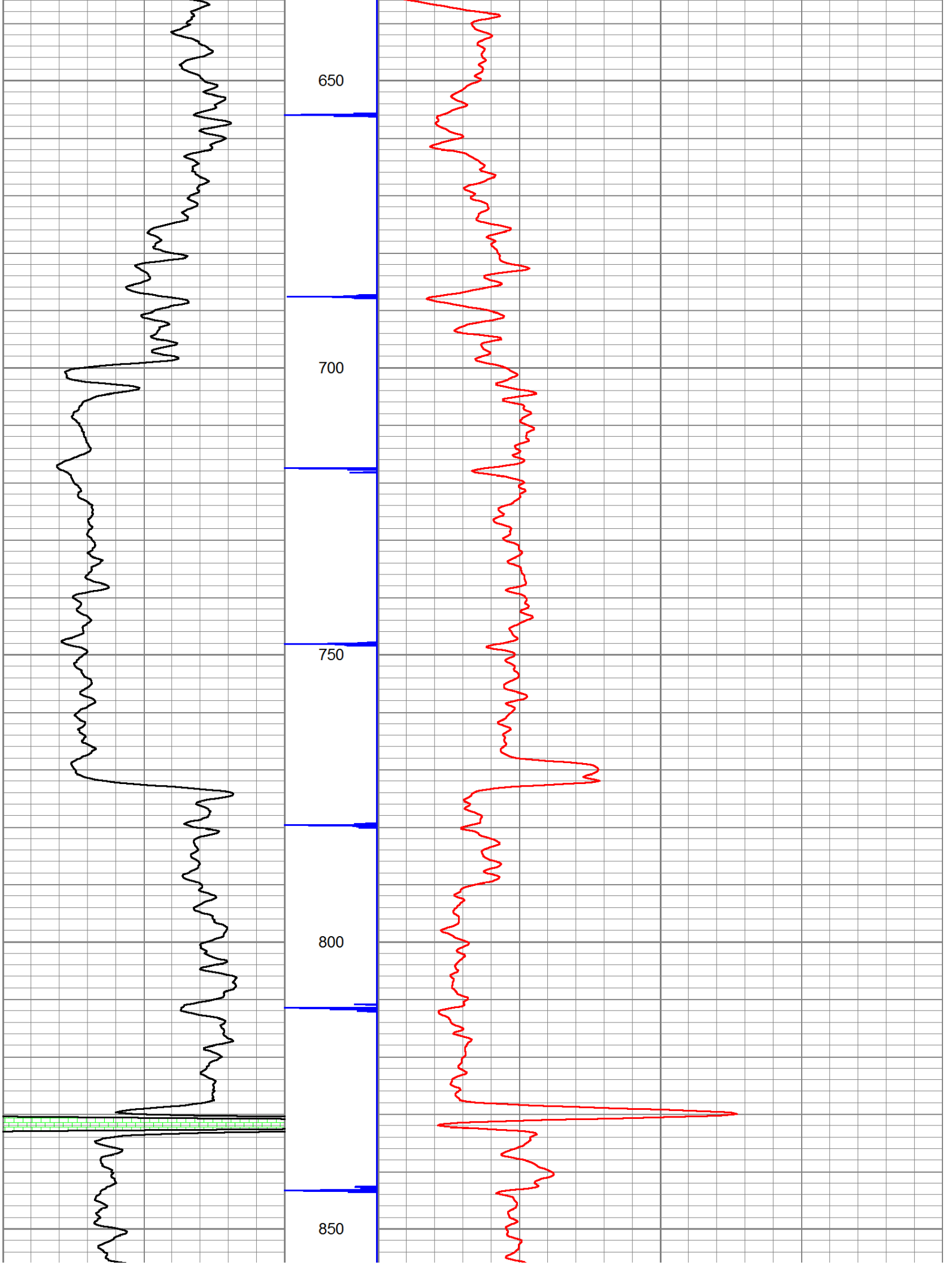
Database File: e:\high #14-1.db
 Dataset Pathname: pass1
 Presentation Format: gr-n-ccl

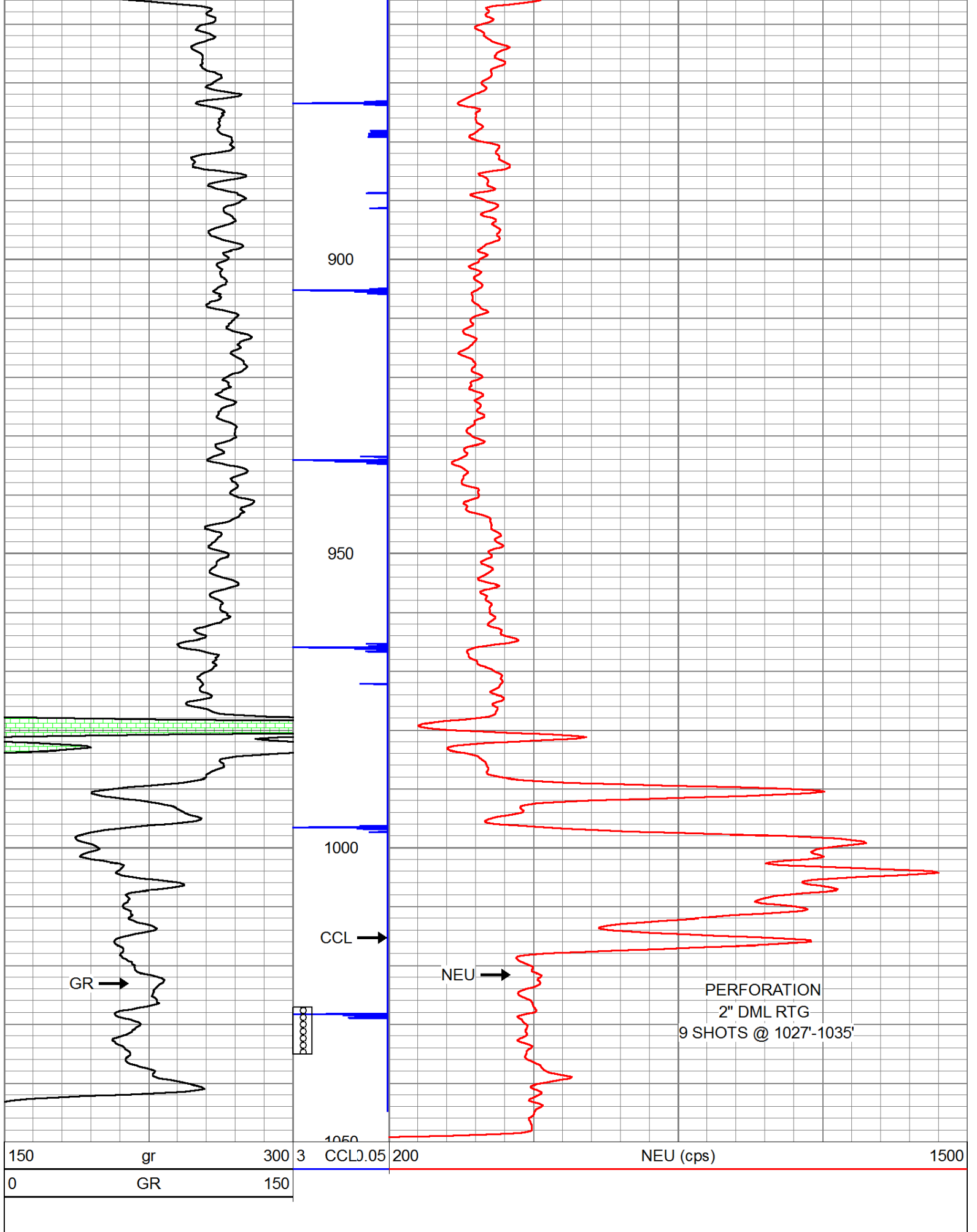
150	gr	300	3	CCLJ.05	200	NEU (cps)	1500
0	GR	150					













Company	G & J OIL COMPANY, INC.		
Well	HIGH #14-1		
Field	PERU-SEDAN		
County	CHAUTAUQUA	SEC. 33	TWP. 34S RGE. 12E
State	KANSAS	Date	10-29-14