



**WIRELINE  
SERVICES, INC.**  
CHANUTE, KANSAS

**GAMMA RAY  
NEUTRON  
COMPLETION LOG**

Company **BULLDOG OIL COMPANY**  
Well **JORDAN #W-4R**  
Field **HUMBOLDT-CHANUTE**  
County **ALLEN**  
State **KANSAS**

Company **BULLDOG OIL COMPANY**  
Well **JORDAN #W-4R**  
Field **HUMBOLDT-CHANUTE**  
County **ALLEN** State **KANSAS**

Location: **API # : 15-001-30873-00-00**  
**2970' FSL & 3135' FEL**  
**W2 SE SE NW**  
**SEC 29 TWP 26S RGE 20E**

Permanent Datum	GL	Elevation	990' EST
Log Measured From	GL	K.B.	D.F.
Drilling Measured From	GL	G.L.	990' EST.

Date	8-14-2014		
Run Number	1 NW		
Depth Driller	915'		
Depth Logger	880.2'		
Top Log Interval	0		
Bottom Logged Interval	880.2'		
Fluid Level	FULL		
Type Fluid	WATER		
Production Casing	2 7/8" @ TD	@	@
Max. Recorded Temp.			
Estimated Cement Top			
Calculated Cement Top			
Amount & Type Cement			
Amount & Type Admix			
Drilling Contractor			
Equipment Number	103		
Location			
Recorded By	SOLOMON, B.		
Witnessed By	BALLARD, D.		

<<< Fold Here >>>

All interpretations are opinions based on inferences from electrical or other measurements and we cannot and do not guarantee the accuracy or correctness of any interpretation, and we shall not, except in the case of gross or willful negligence on our part, be liable or responsible for any loss, costs, damages, or expenses incurred or sustained by anyone resulting from any interpretation made by any of our officers, agents or employees. These interpretations are also subject to our general terms and conditions set out in our current Price Schedule.

**Comments**

**THANK YOU**

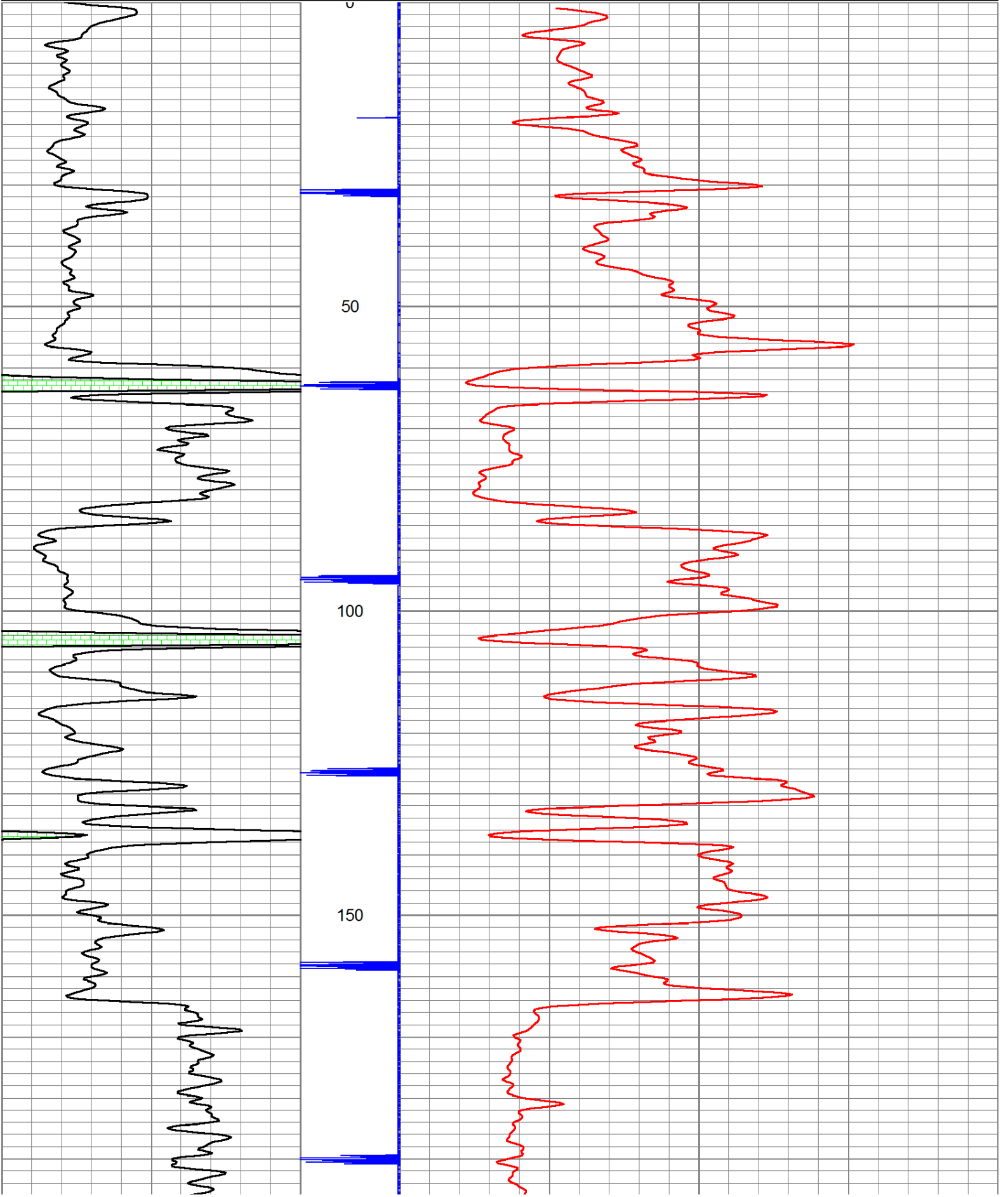
Sensor	Offset (ft)	Schematic	Description	Len (ft)	OD (in)	Wt (lb)

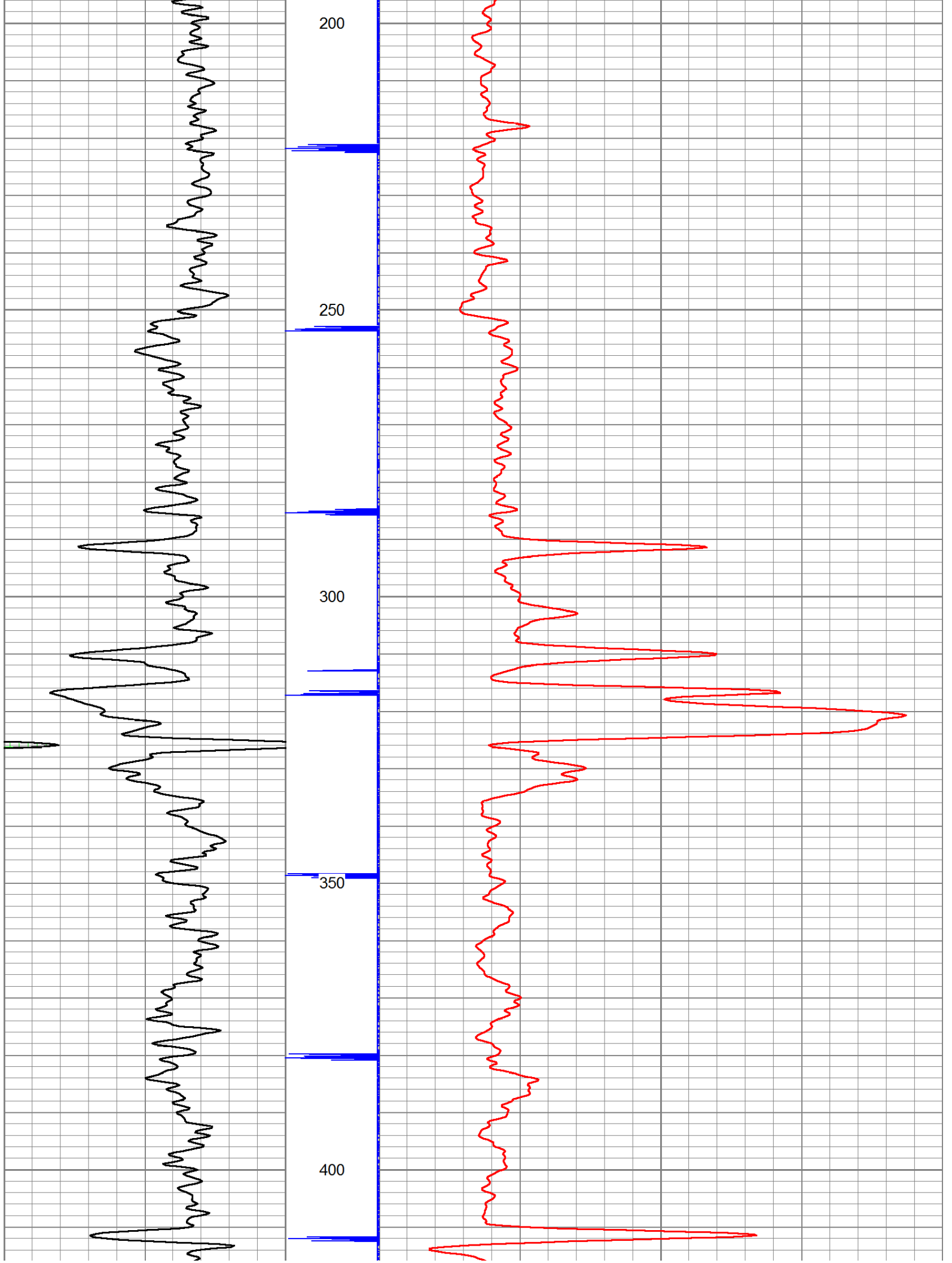
GR	7.59		GR-TITAN_169 (TIT169_001) Titan 1 11/16" Gamma Ray	4.75	1.69	20.00
CCL	5.05		CCL-TITAN_169 (TIT169) Titan 1 11/16" Logging CCL	1.83	1.69	7.50
NEU	0.63		NEU-TITAN (TIT801) TITAN 1 11/16" Neutron	4.33	1.69	25.00

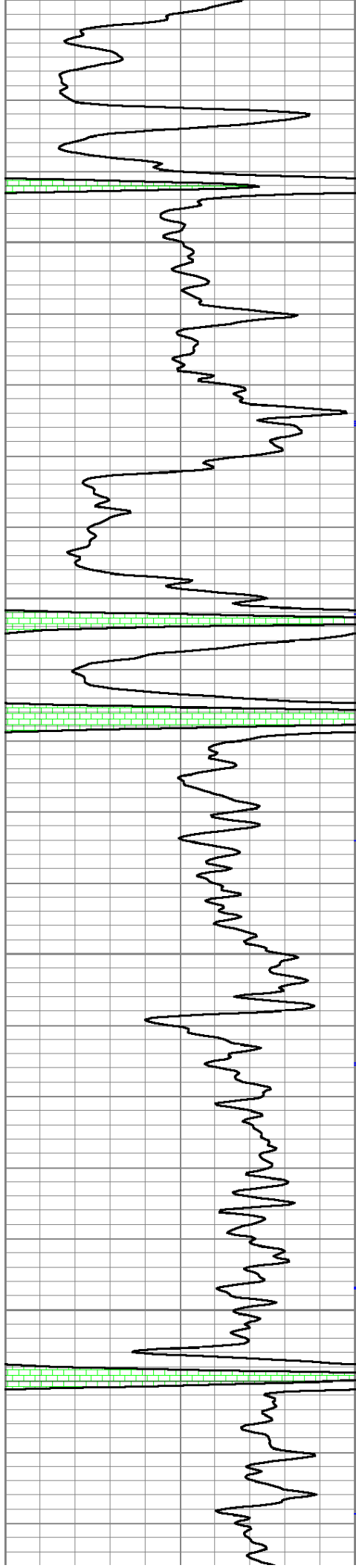
Dataset: jordan #w-4r.db: field/well/run1/pass1.1  
 Total Length: 10.92 ft  
 Total Weight: 52.50 lb  
 O.D.: 1.69 in

Database File: e:\jordan #w-4r.db  
 Dataset Pathname: pass1.1  
 Presentation Format: gr-n-ccl

150	gr	300	3	CCLJ.05	100	NEU (cps)	1800
0	GR	150					





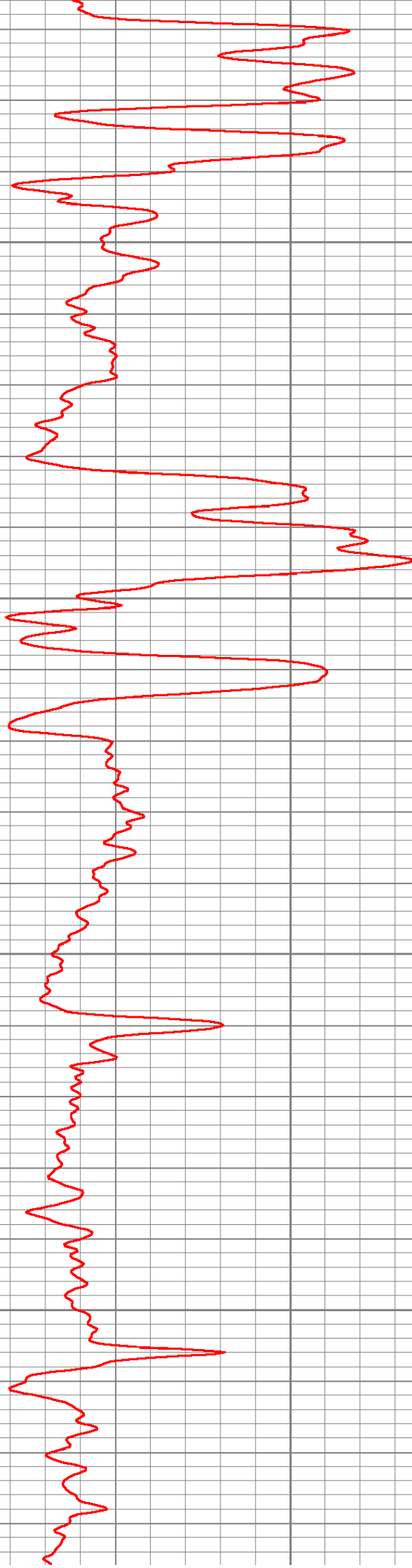


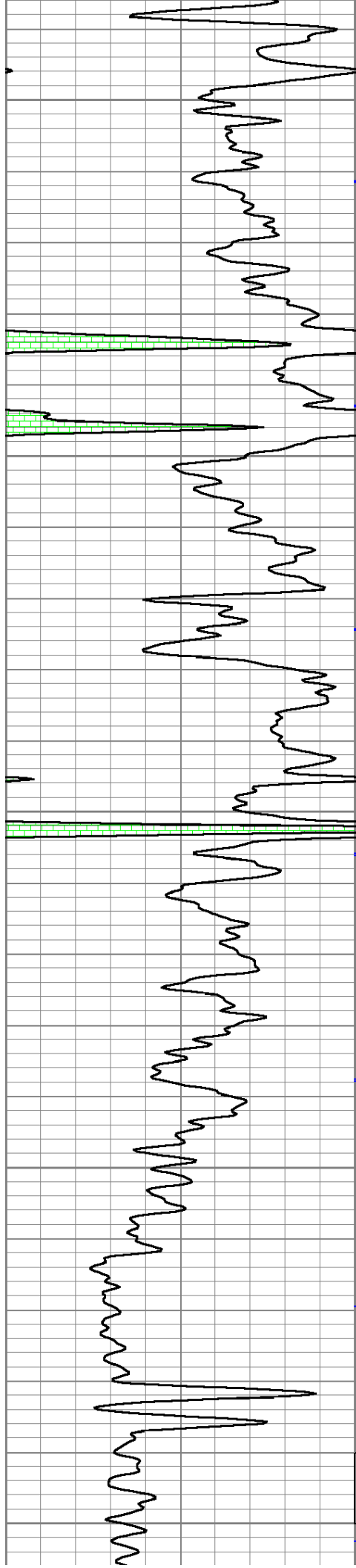
450

500

550

600





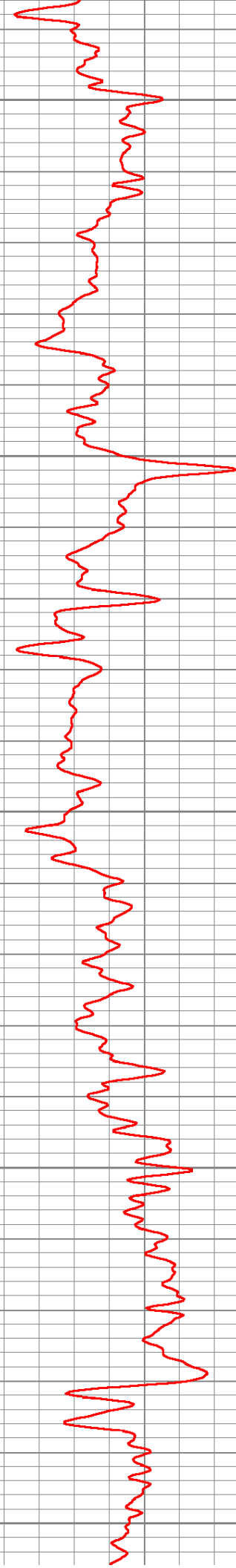
650

700

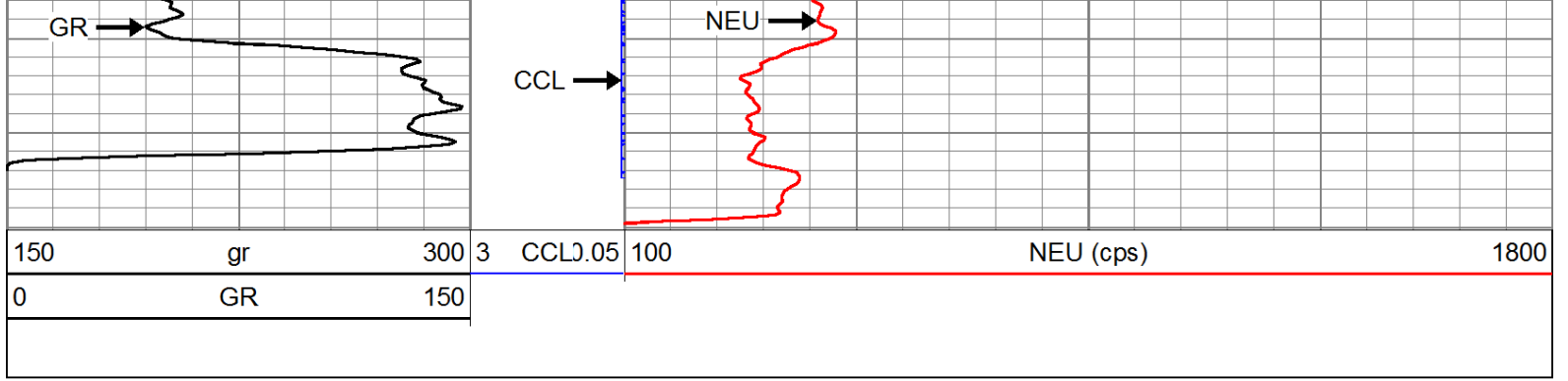
750

800

850



PERFORATION  
2" DML RTG GUN  
14 SHOTS @ 840'-850'



Company	BULLDOG OIL COMPANY
Well	JORDAN #W-4R
Field	HUMBOLDT-CHANUTE
County	ALLEN SEC. 29 TWP. 26S RGE. 20E
State	KANSAS
Date	8-14-2014