



Pioneer Energy Services

Microresistivity Log

API No. 15-063-22,170-00-00

Company **Black Tea Oil, LLC**
 Well **Krebs Q No. 2**
 Field **Wildcat**
 County **Gove** State **Kansas**

Location **SW-NW-NE-SW
 2075' FSL & 1530' FWL**

Other Services
 CNL/CDL
 DIL/BHCS

Sec: 30 Twp: 14S Rge: 31W
 Elevation 2720
 Log Measured From Kelly Bushing 8 Ft. Above Perm. Datum
 Drilling Measured From Kelly Bushing

Elevation
 K.B. 2728
 D.F. 2720
 G.L. 2720

Date	1/16/14		
Run Number	Two		
Depth Driller	4510		
Depth Logger	4513		
Bottom Logged Interval	4512		
Top Log Interval	3600		
Casing Driller	8.625 @ 269		
Casing Logger	256		
Bit Size	7.875		
Type Fluid in Hole	Chemical		
Salinity, ppm CL	6,000		
Density / Viscosity	8.9 47		
pH / Fluid Loss	9.5 8.0		
Source of Sample	Flowline		
Rm @ Meas. Temp	.70 @ 45		
Rmf @ Meas. Temp	.53 @ 45		
Rmc @ Meas. Temp	.95 @ 45		
Source of Rmf / Rmc	Charts		
Rm @ BHT	.26 @ 121		
Operating Rig Time	5 Hours		
Max Rec. Temp. F	121		
Equipment Number	15		
Location	Hays		
Recorded By	J. Henrickson		
Witnessed By	Brian Wedgley		

<<< Fold Here >>>

All interpretations are opinions based on inferences from electrical or other measurements and we cannot and do not guarantee the accuracy or correctness of any interpretation, and we shall not, except in the case of gross or willful negligence on our part, be liable or responsible for any loss, costs, damages, or expenses incurred or sustained by anyone resulting from any interpretation made by any of our officers, agents or employees. These interpretations are also subject to our general terms and conditions set out in our current Price Schedule.

Comments

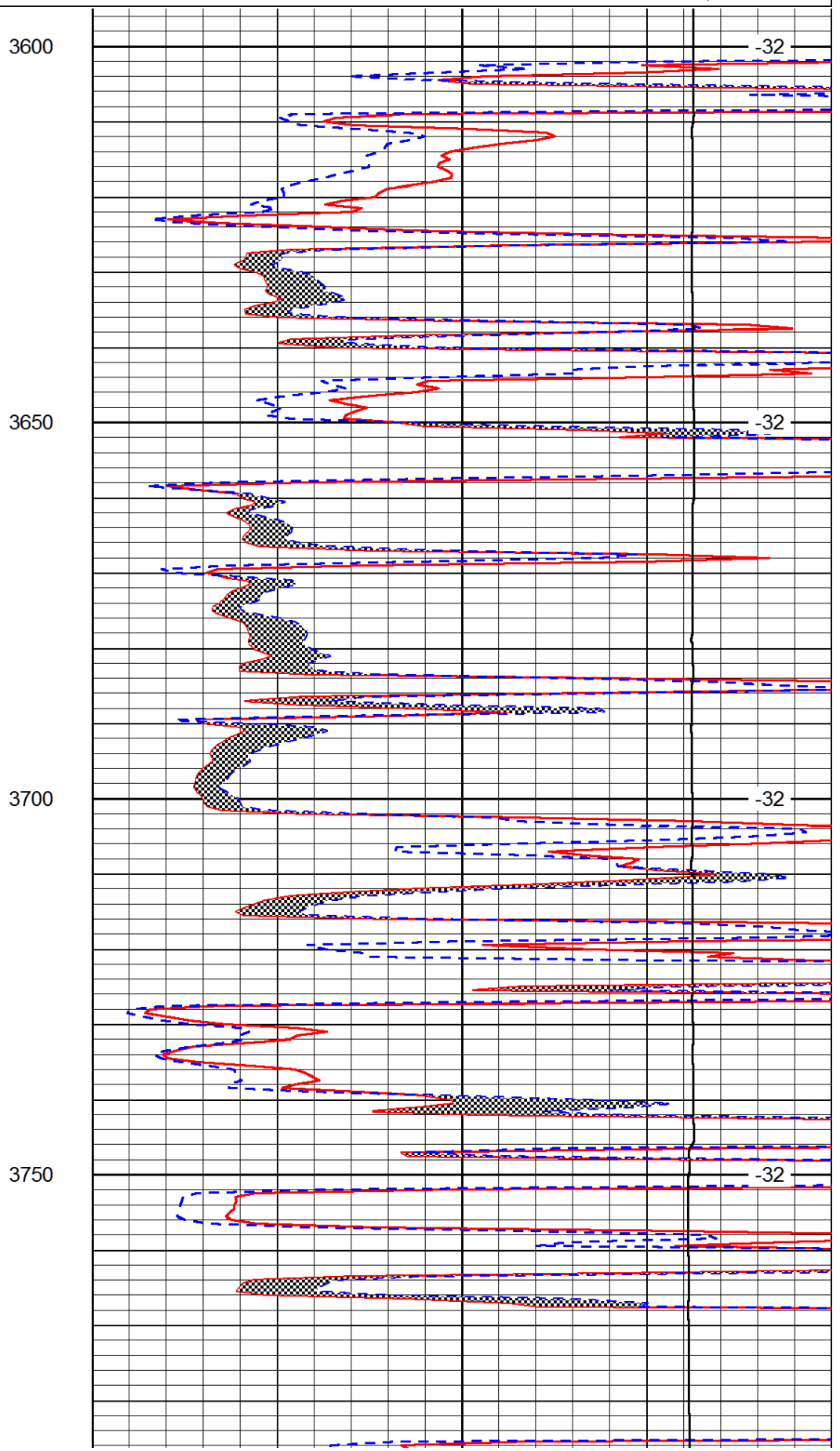
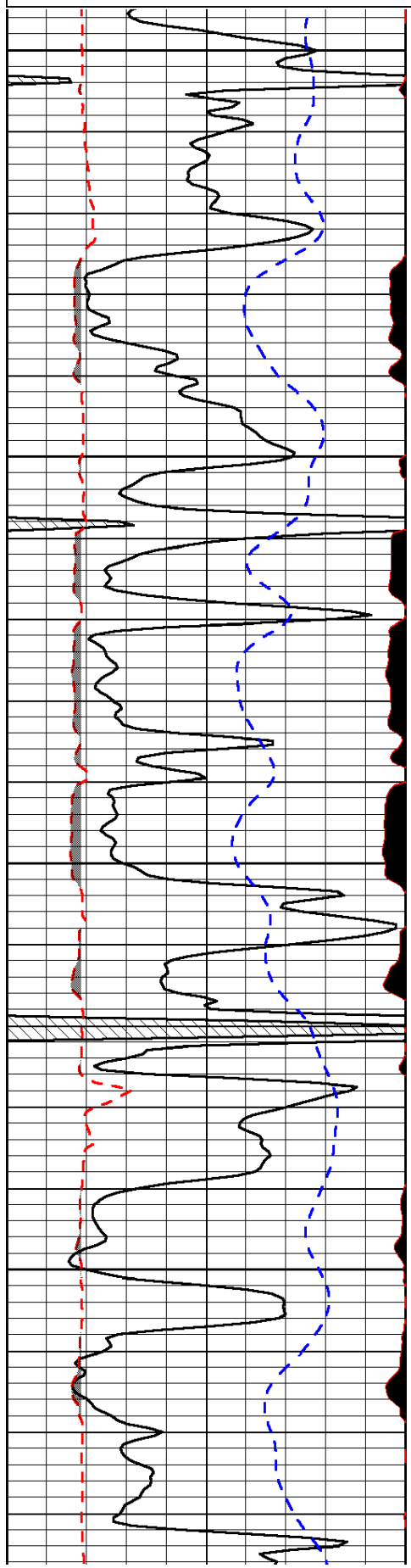
Thank you for using Log-Tech, Inc.
 (785) 625-3858

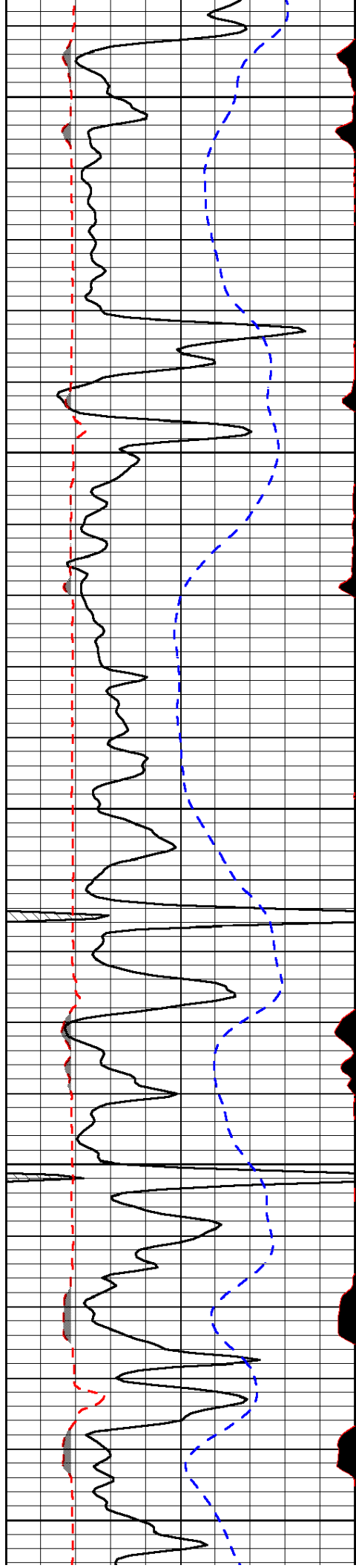
Oakley Kansas
 South to Indian Rd, South to just before Smokey Hill River Bridge,
 East into at Gates, Through 2 Cattle Guards, Right at Fork

Database File: black_tea_krebs_q_2hd.db
 Dataset Pathname: DIL/blteastk
 Presentation Format: micro
 Dataset Creation: Thu Jan 16 07:12:16 2014
 Charted by: Depth in Feet scaled 1:240

0	Gamma Ray (GAPI)	150
6	MCAL (in)	16
2.875	Mud Cake (in)	7.875
-200	SP (mV)	0

0	Micro Inverse 1 X 1 (Ohm-m)	40
0	Micro Normal 2" (Ohm-m)	40
10000	Line Weight (lb)	0
	LSPD (ft/min)	





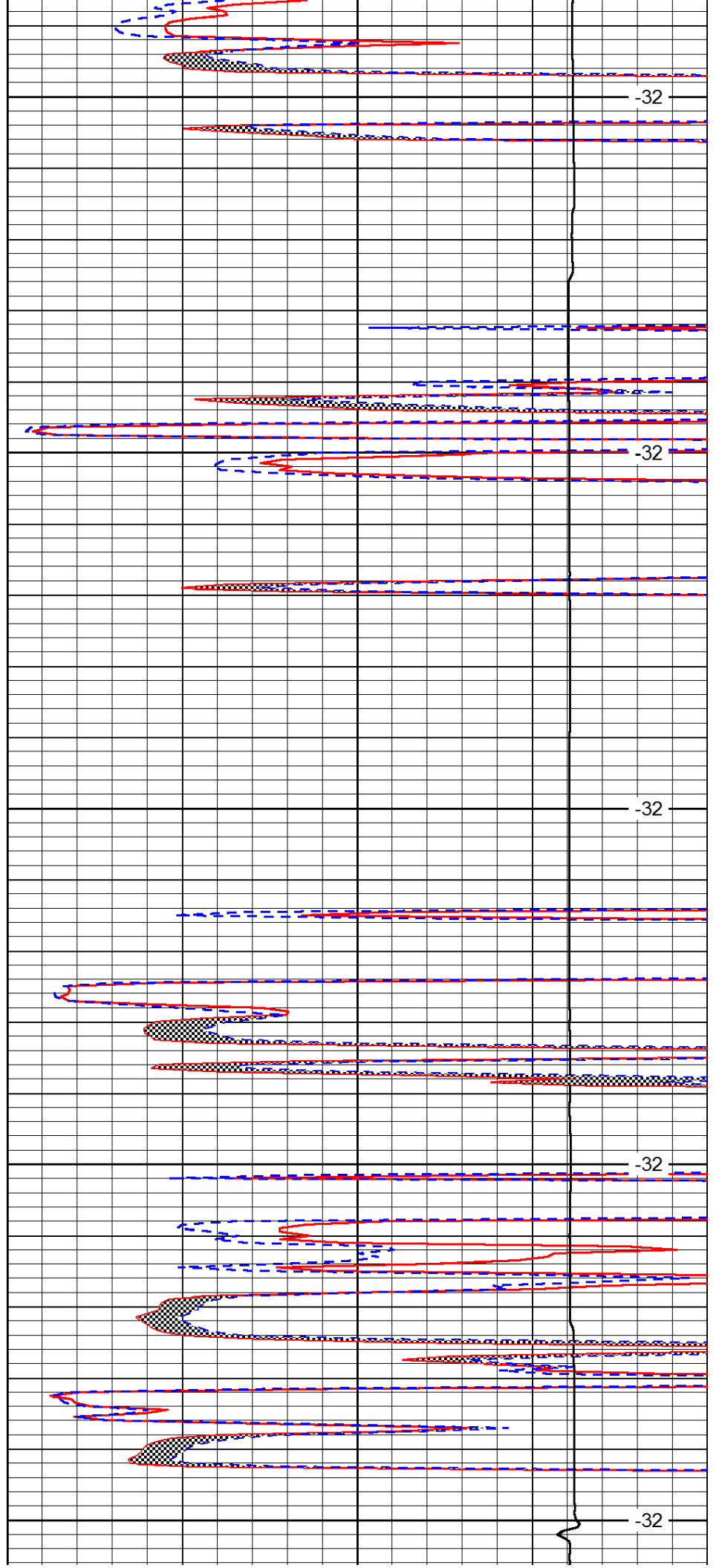
3800

3850

3900

3950

4000



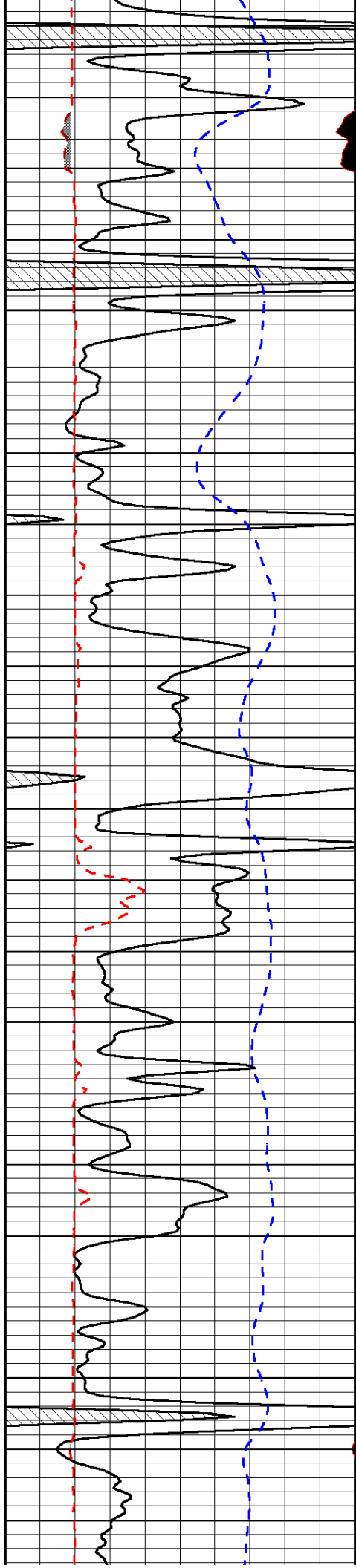
-32

-32

-32

-32

-32

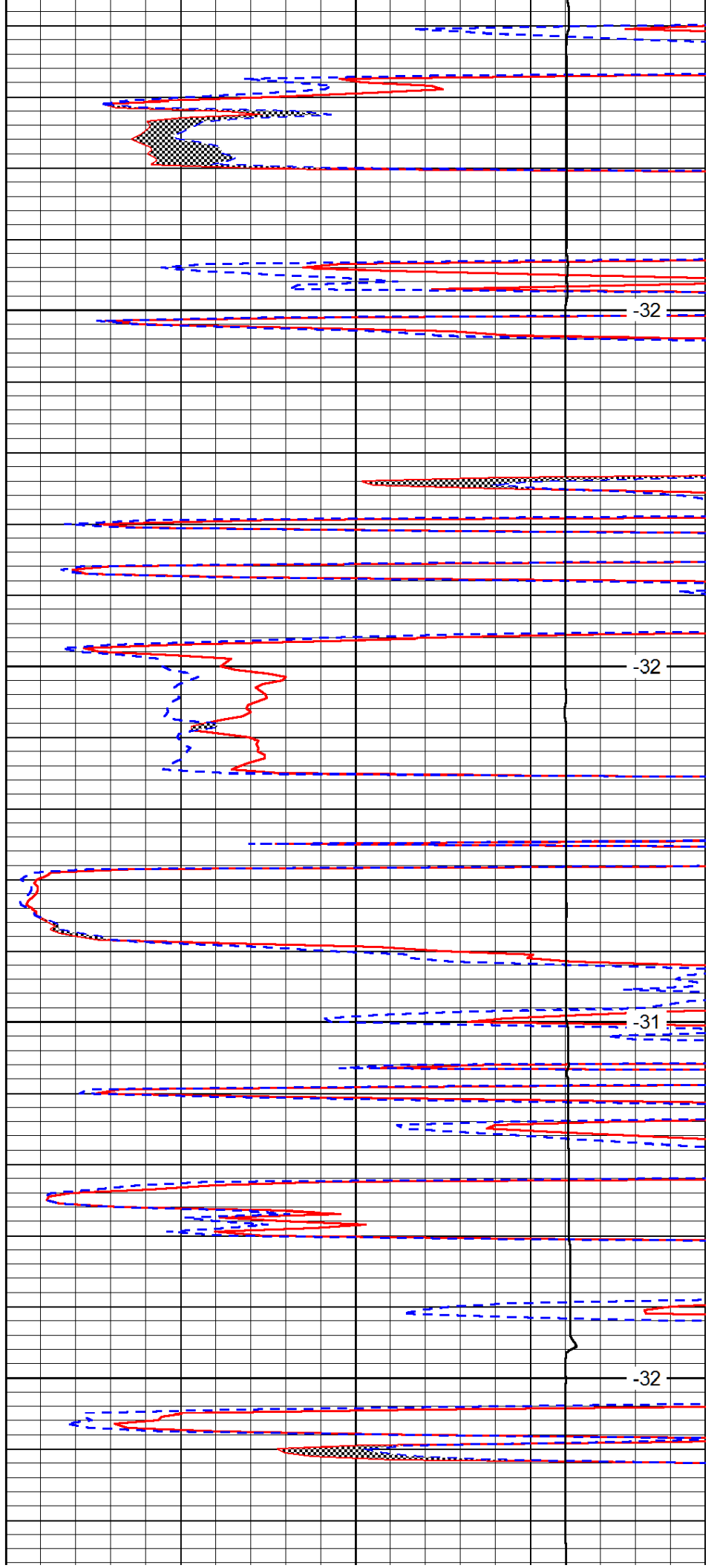


4050

4100

4150

4200

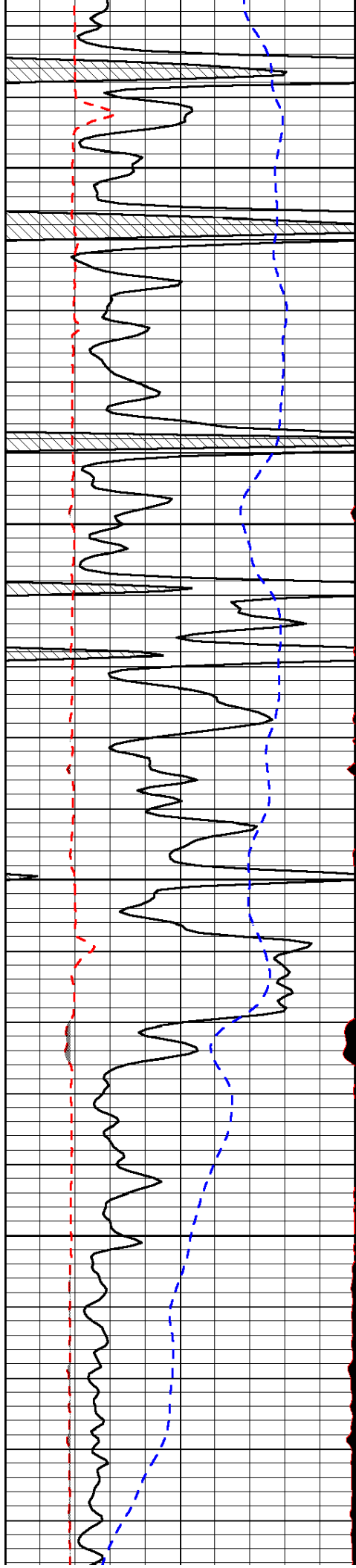


-32

-32

-31

-32

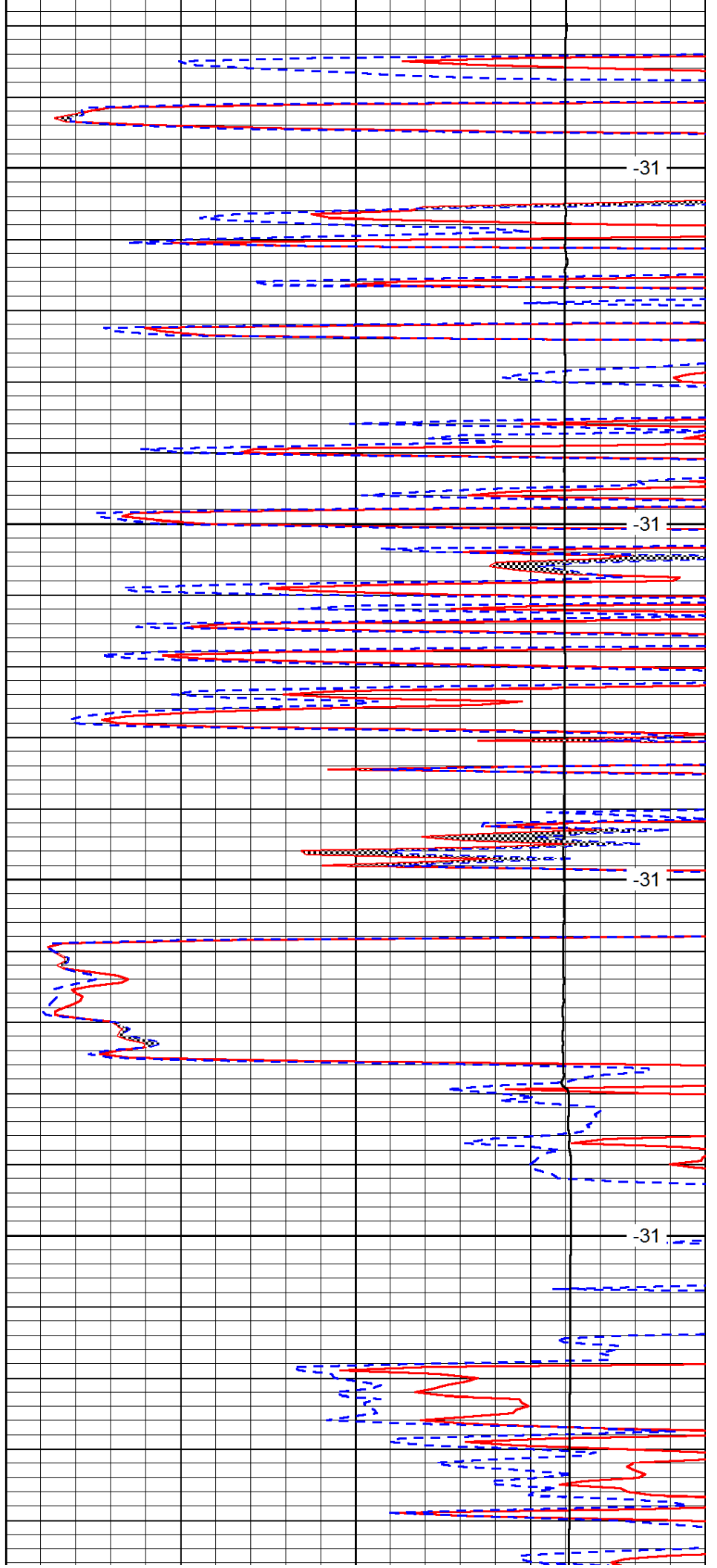


4250

4300

4350

4400

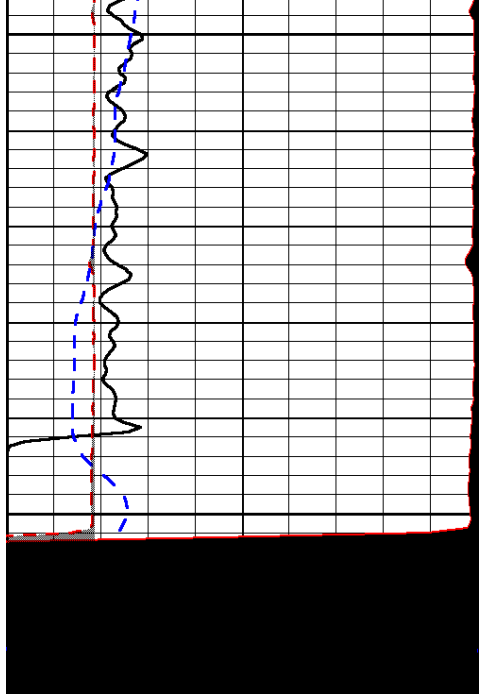


-31

-31

-31

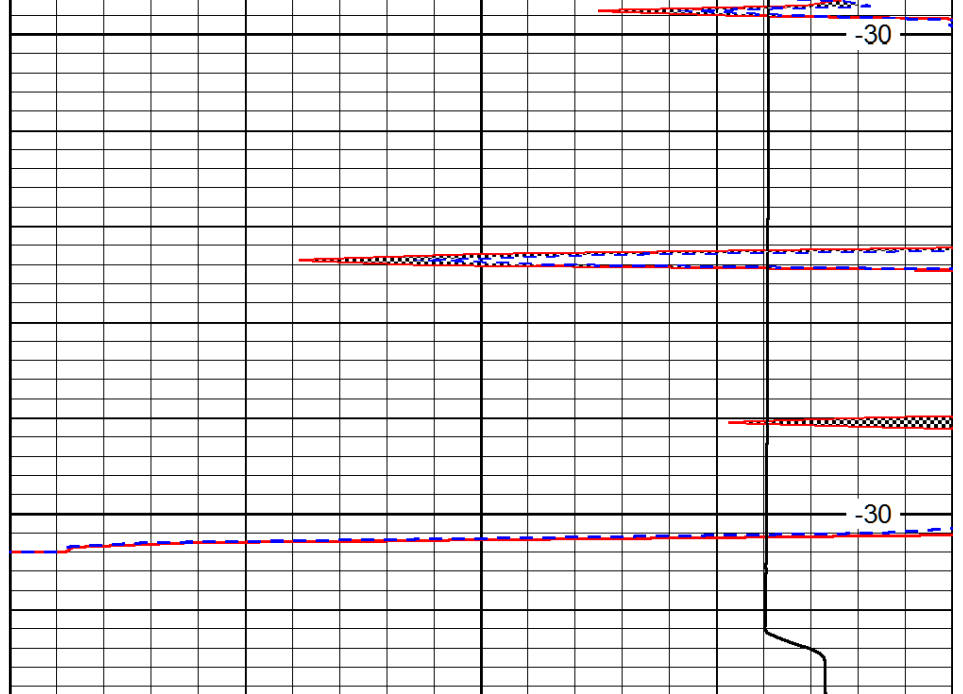
-31



4450

4500

0	Gamma Ray (GAPI)	150
6	MCAL (in)	16
2.875	Mud Cake (in)	7.875
-200	SP (mV)	0



-30

-30

0	Micro Inverse 1 X 1 (Ohm-m)	40
0	Micro Normal 2" (Ohm-m)	40
10000	Line Weight (lb)	0

LSPD
(ft/min)