



Pioneer Energy Services

Dual Compensated Porosity Log

15-063-22,170-00-00

API No.

Company **Black Tea Oil, LLC**
 Well **Krebs Q No. 2**
 Field **Wildcat**
 County **Gove**

State **Kansas**

Location

SW-NW-NE-SW
 2075' FSL & 1530' FWL

Other Services
 DIL
 MEL/BHCS

Sec: 30

Twp: 14S

Rge: 31W

Elevation

K.B. 2728
 D.F. 2728
 G.L. 2720

Permanent Datum
 Log Measured From
 Drilling Measured From

Ground Level
 Kelly Bushing
 Kelly Bushing

Elevation 2720
 8 Ft. Above Perm. Datum

Date

1/16/14

Run Number

One

Type Log

CNL / CDL

Depth Driller

4510

Depth Logger

4513

Bottom Logged Interval

4492

Top Logged Interval

3600

Type Fluid In Hole

Chemical

Salinity, PPM CL

6,000

Density

8.9

Level

Full

Max. Rec. Temp. F

121

Operating Rig Time

5 Hours

Equipment -- Location

15 Hays

Recorded By

J. Henrickson

Witnessed By

Brian Wegley

Borehole Record

Run No.	Bit	From	To	Size	Wgt.	From	To
One	12.25	00	269	8.625	23#	00	269
Two	7.875	269	TD				

Casing Record

Run No.	Bit	From	To	Size	Wgt.	From	To
One	12.25	00	269	8.625	23#	00	269
Two	7.875	269	TD				

<<< Fold Here >>>

All interpretations are opinions based on inferences from electrical or other measurements and we cannot and do not guarantee the accuracy or correctness of any interpretation, and we shall not, except in the case of gross or willful negligence on our part, be liable or responsible for any loss, costs, damages, or expenses incurred or sustained by anyone resulting from any interpretation made by any of our officers, agents or employees. These interpretations are also subject to our general terms and conditions set out in our current Price Schedule.

Comments

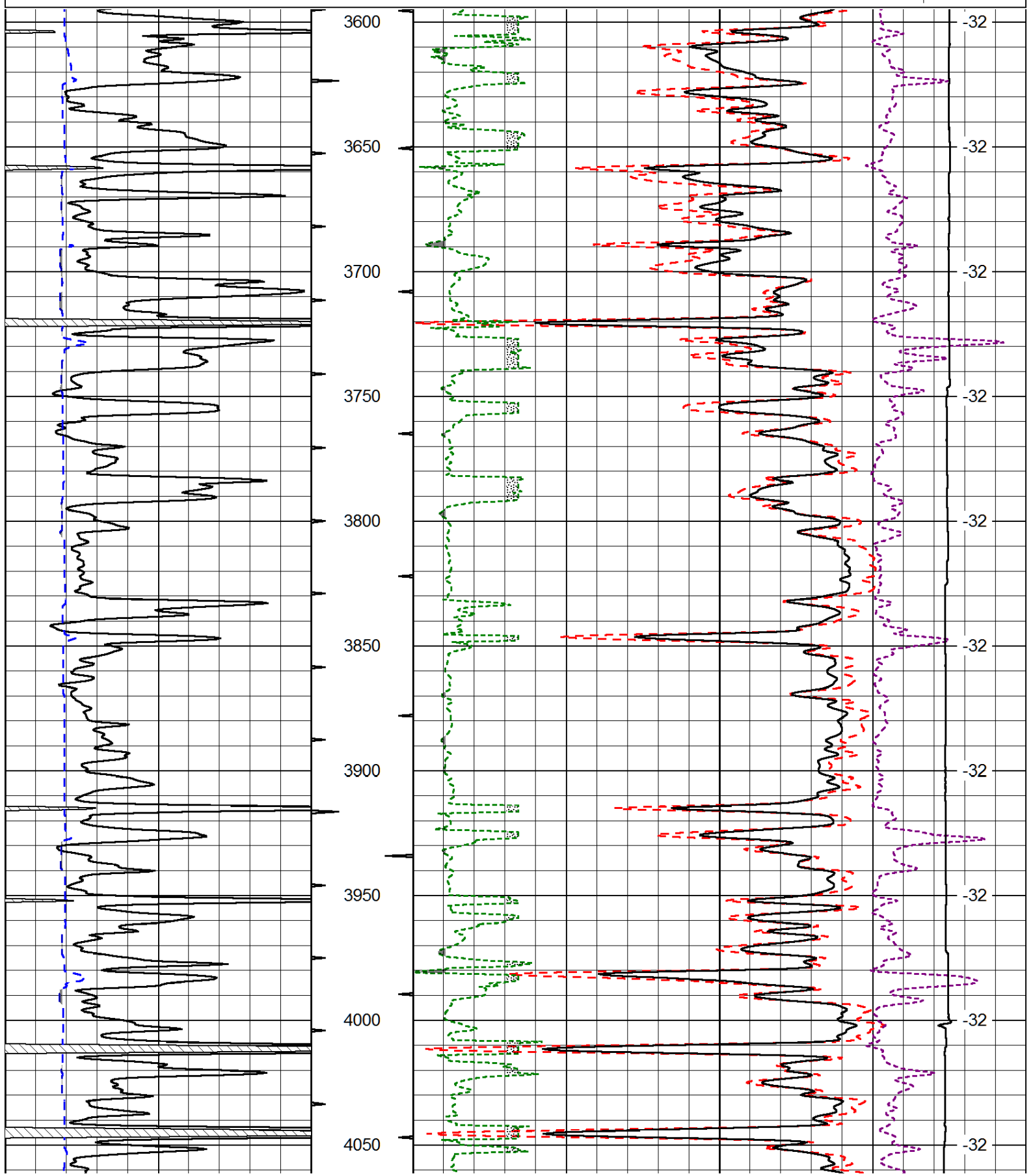
Thank you for using Log-Tech, Inc.
 (785) 625-3858
 Oakley Kansas
 South to Indian Rd, South to just before Smokey Hill River Bridge,
 East into at Gates, Through 2 Cattle Guards, Right at Fork

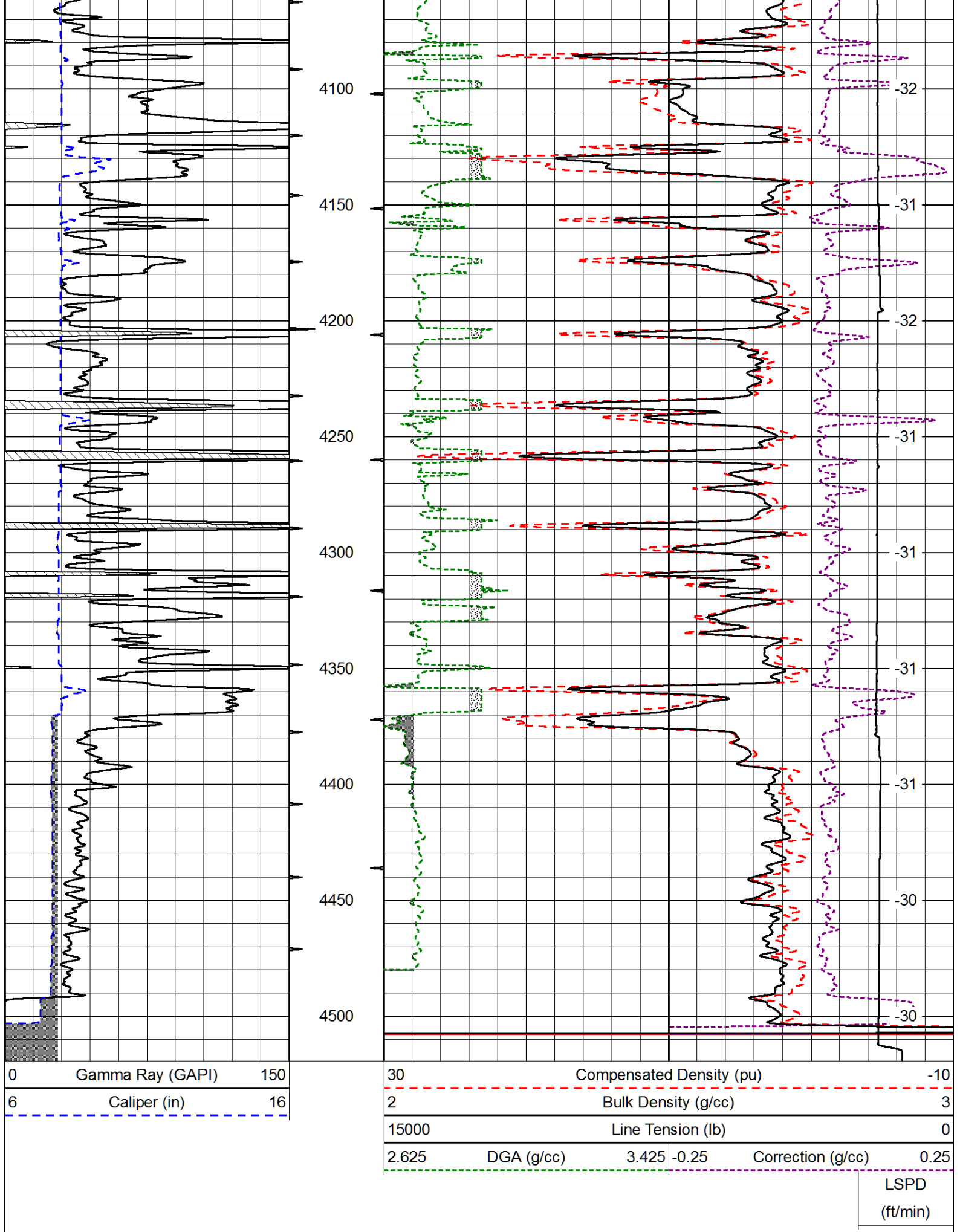
Database File: black_tea_krebs_q_2hd.db
 Dataset Pathname: DIL/blteastk
 Presentation Format: cdl
 Dataset Creation: Thu Jan 16 07:12:16 2014
 Charted by: Depth in Feet scaled 1:600

0	Gamma Ray (GAPI)	150
6	Caliper (in)	16

30	Compensated Density (pu)		-10
2	Bulk Density (g/cc)		3
15000	Line Tension (lb)		0
2.625	DGA (g/cc)	3.425	-0.25
			Correction (g/cc)
			0.25

LSPD
(ft/min)





0 Gamma Ray (GAPI) 150
 6 Caliper (in) 16

30 Compensated Density (pu) -10
 2 Bulk Density (g/cc) 3
 15000 Line Tension (lb) 0
 2.625 DGA (g/cc) 3.425 -0.25 Correction (g/cc) 0.25

LSPD
 (ft/min)

Database File: black_tea_krebs_q_2hd.db
 Dataset Pathname: DIL/blteastk
 Presentation Format: cndlspec
 Dataset Creation: Thu Jan 16 07:12:16 2014
 Charted by: Depth in Feet scaled 1:240

0	Gamma Ray (GAPI)	150	30	CNPOR (pu)		-10		
6	Caliper (in)	16	30	Compensated Density (2.71 ma) (pu)		-10		
			2.625	DGA (g/cc)	3.425	-0.25	Correction (g/cc)	0.25
			10000	Line Tension (lb)		0		
							LSPD (ft/min)	

