

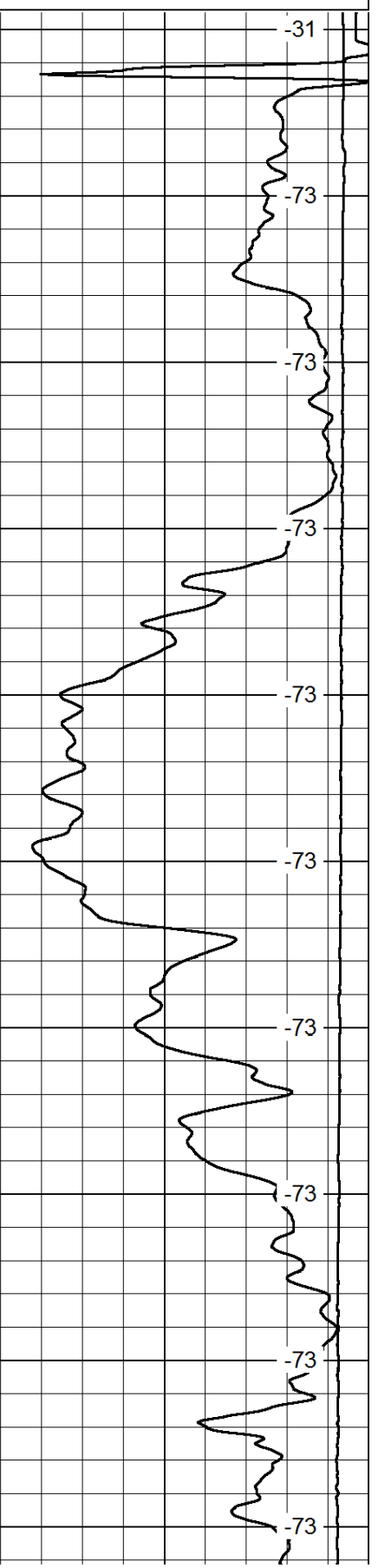
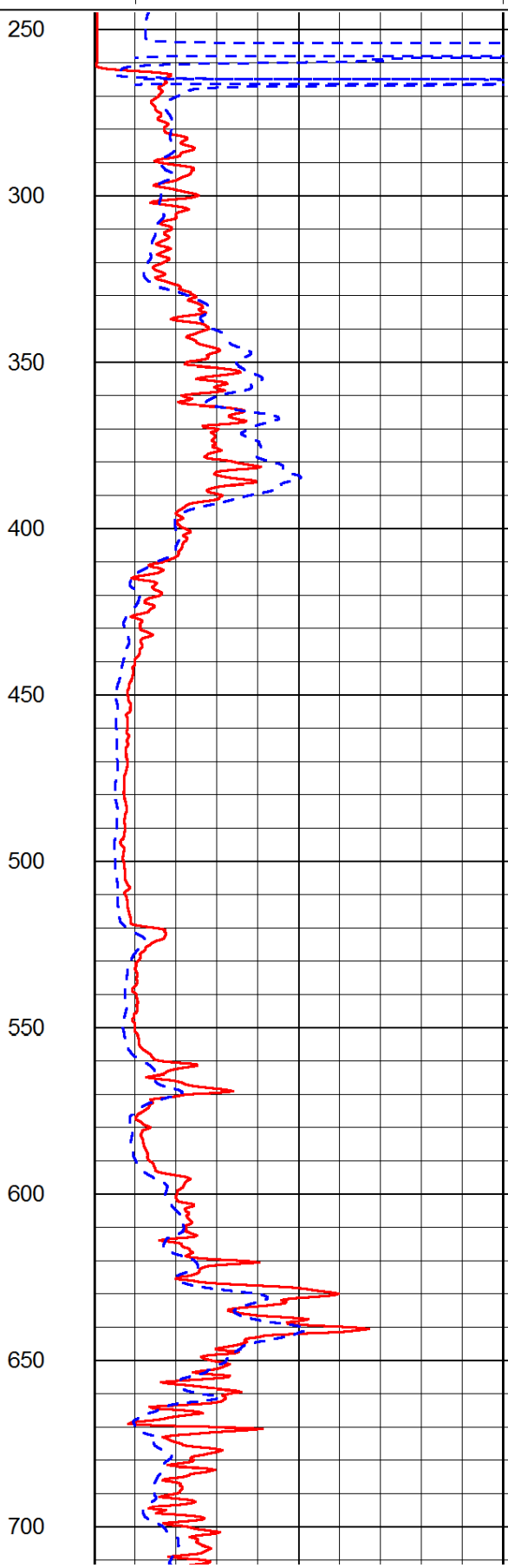
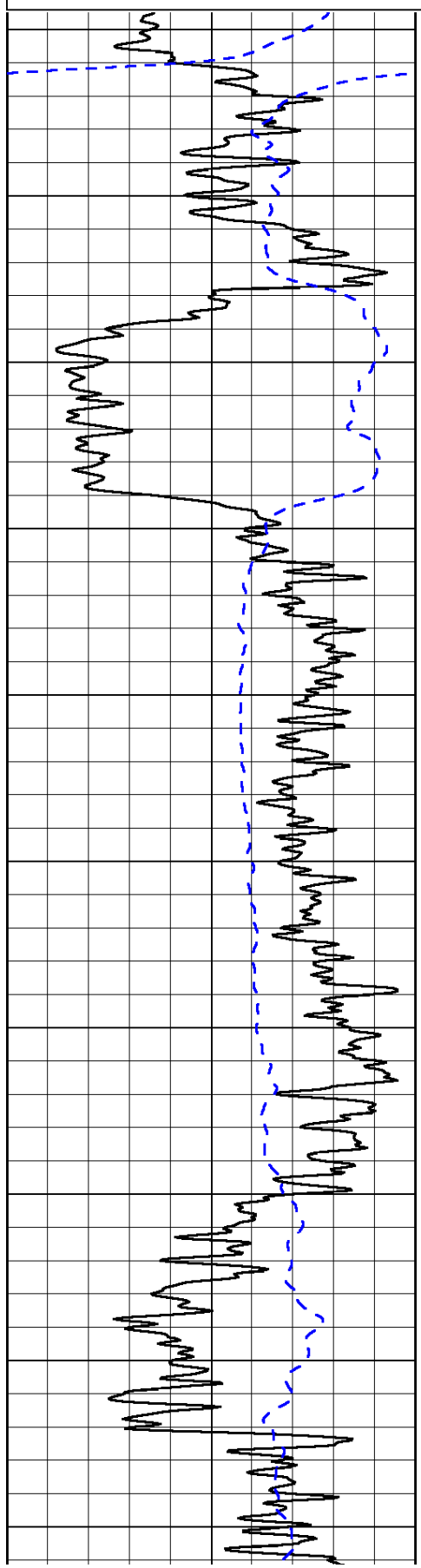
| | | |
|------|-----------|-----|
| 0 | Gamma Ray | 150 |
| -200 | SP (mV) | 0 |

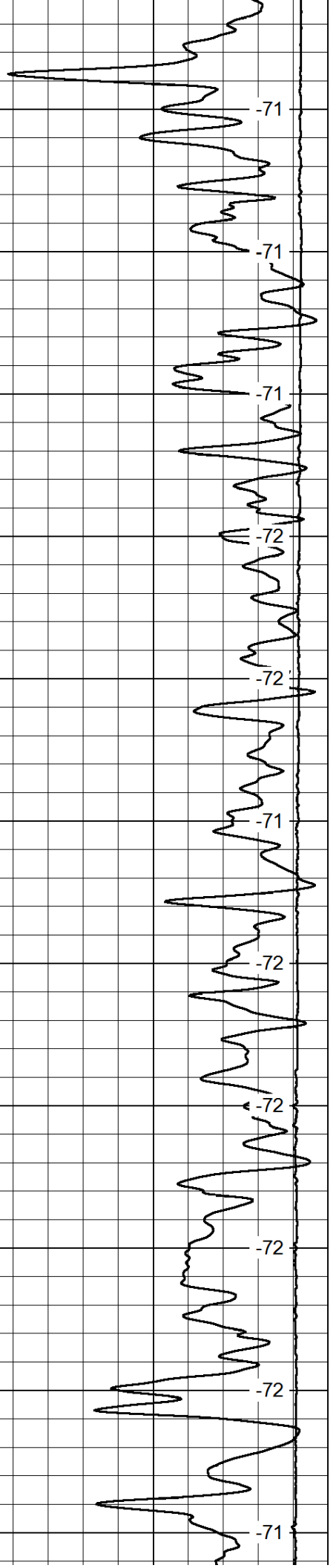
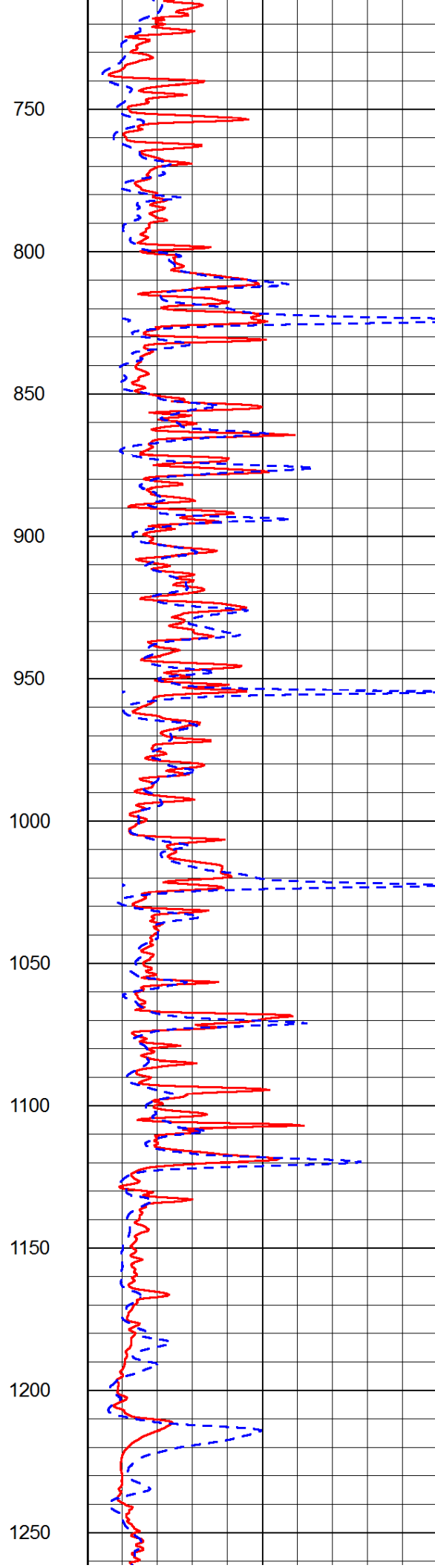
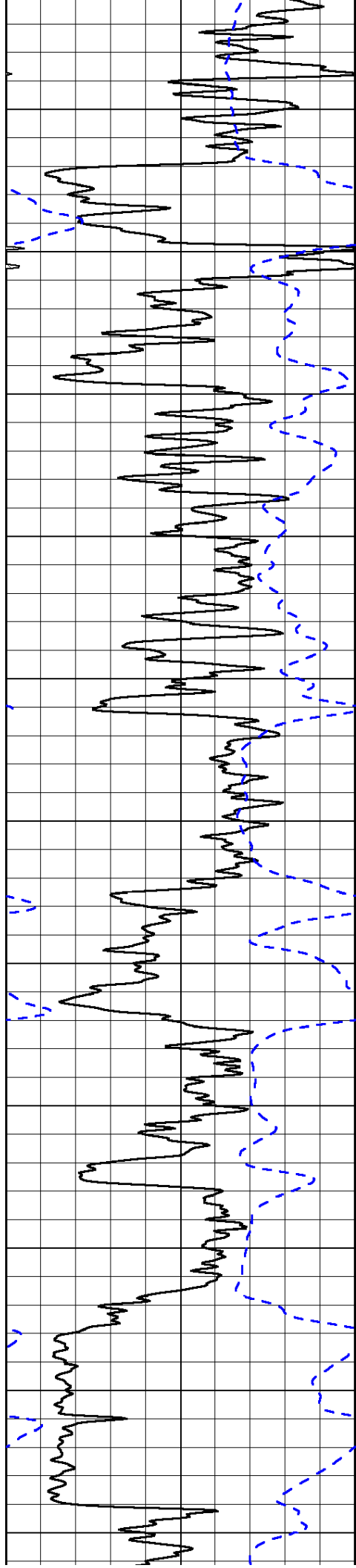
| | | |
|---|---------------------|----|
| 0 | Shallow Resistivity | 50 |
| 0 | Deep Resistivity | 50 |

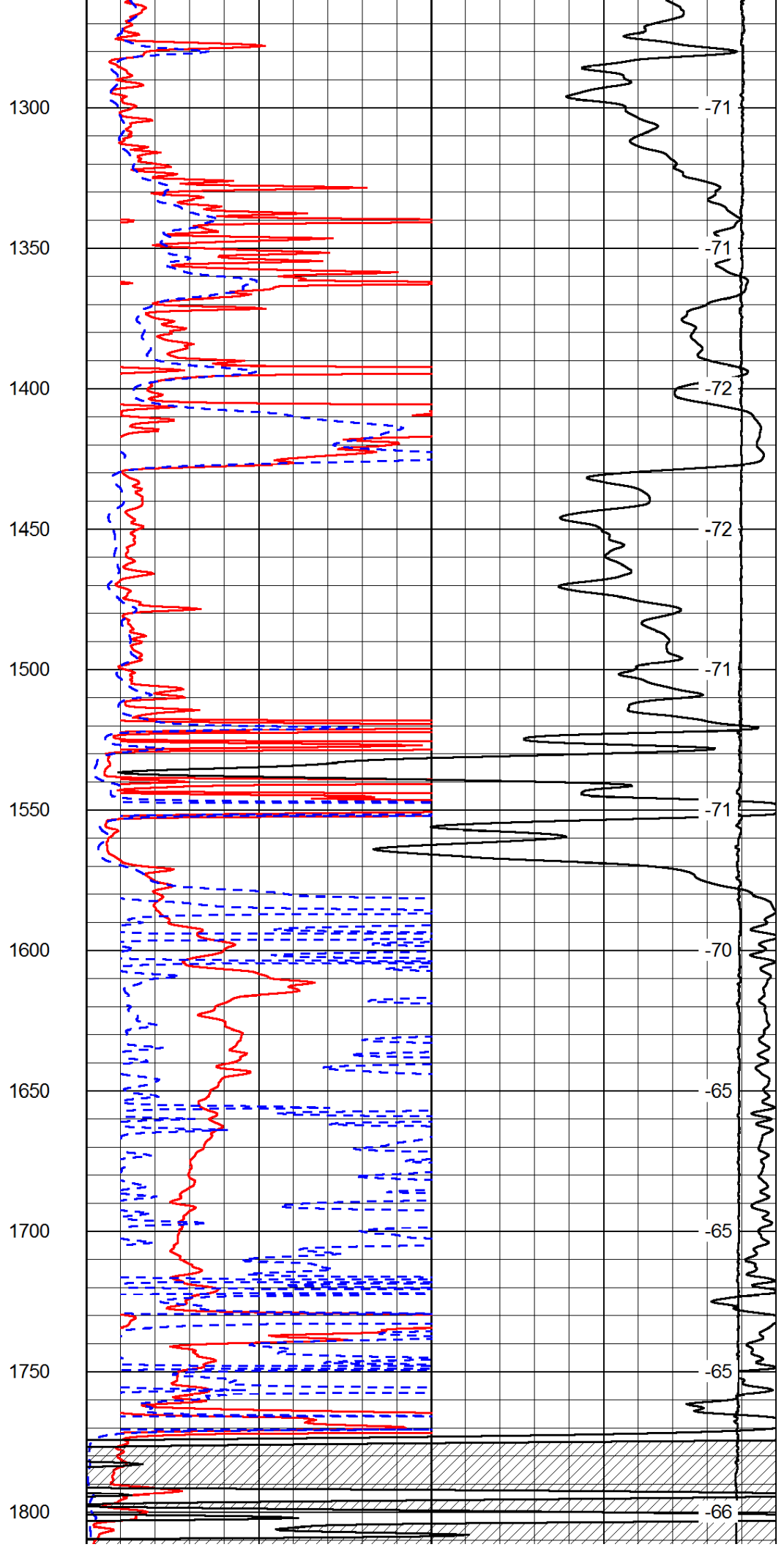
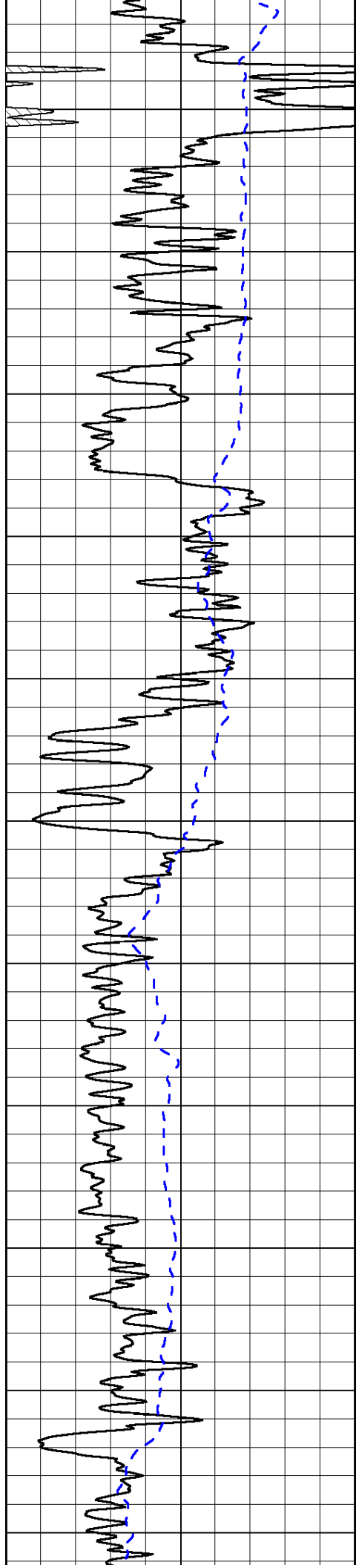
LSPD

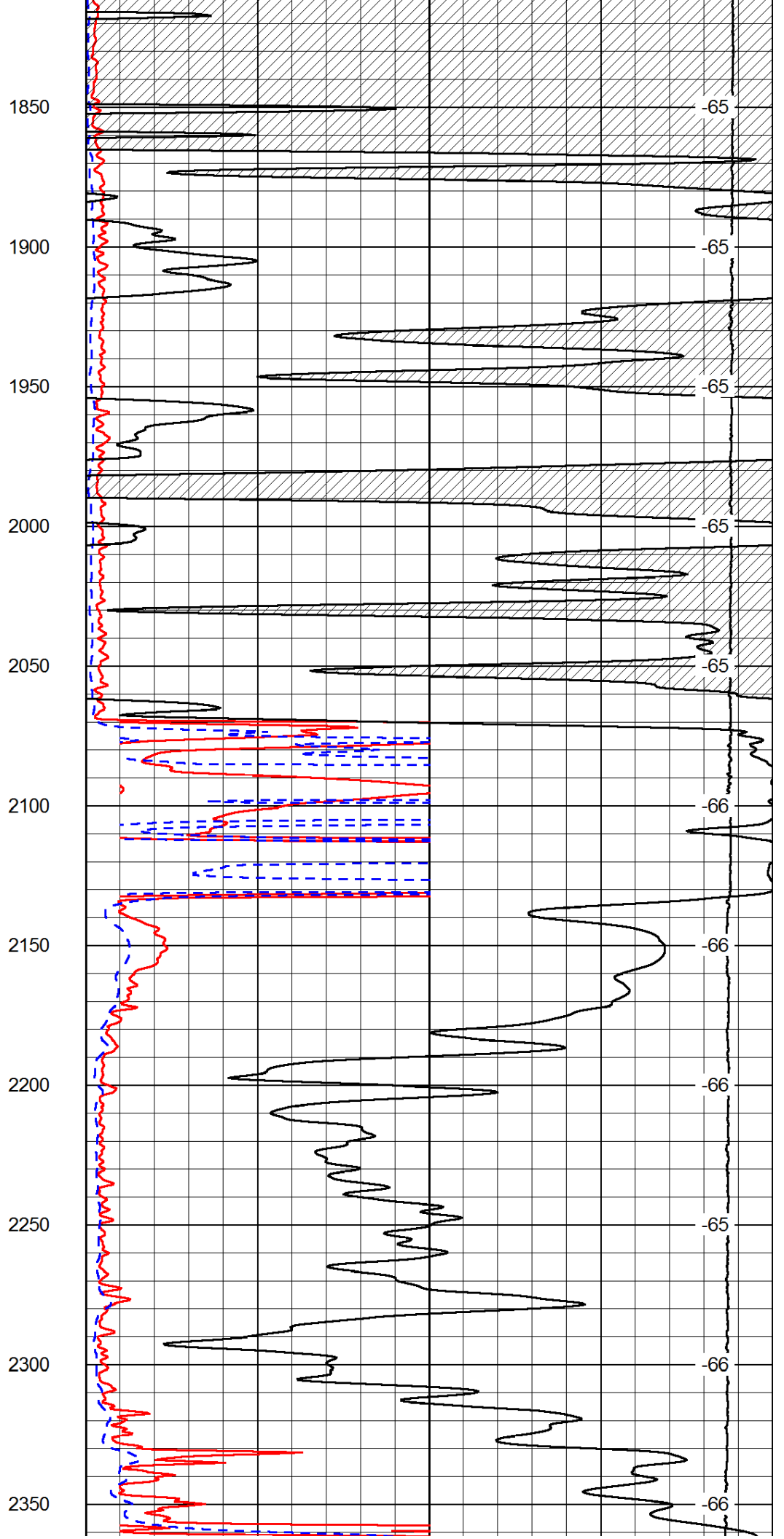
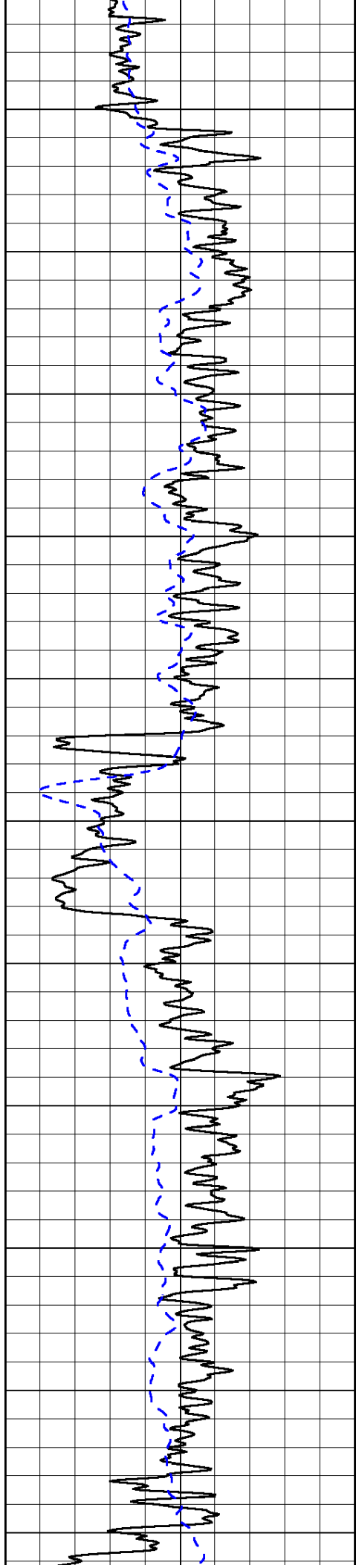
| | | |
|-------|--------------|---|
| 1000 | Conductivity | 0 |
| 15000 | Line Tension | 0 |

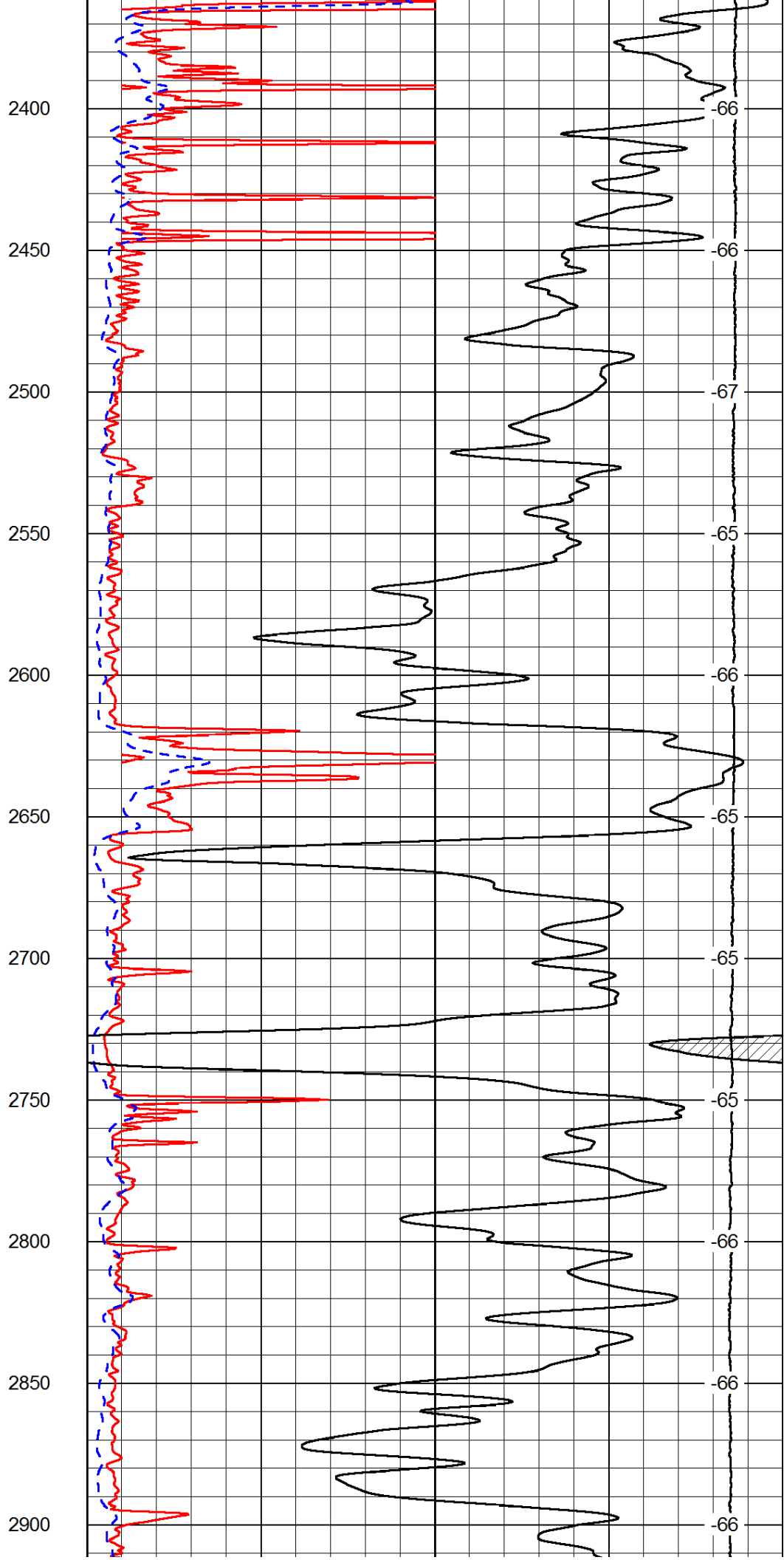
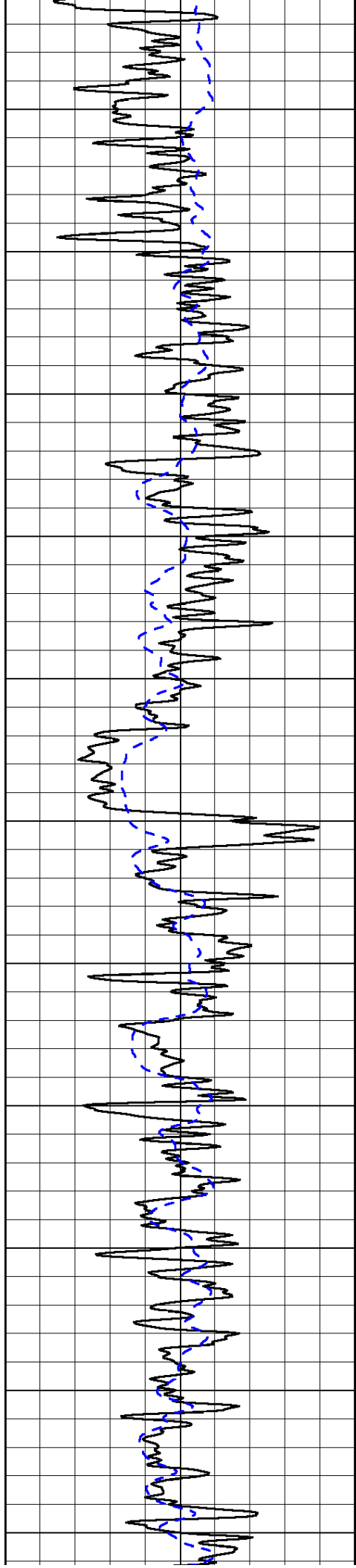
| | | |
|----|---------------------|-----|
| 50 | Shallow Resistivity | 500 |
| 50 | Deep Resistivity | 500 |

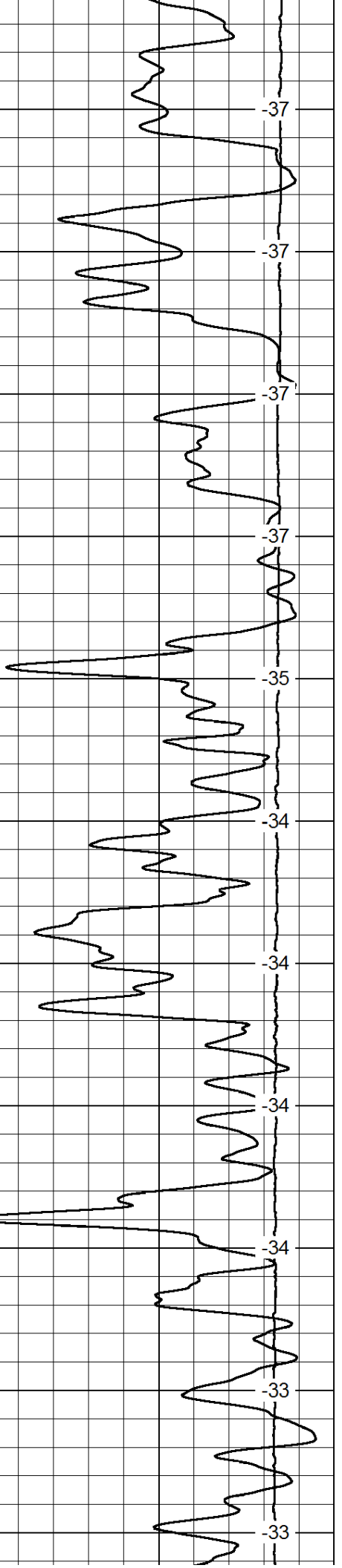
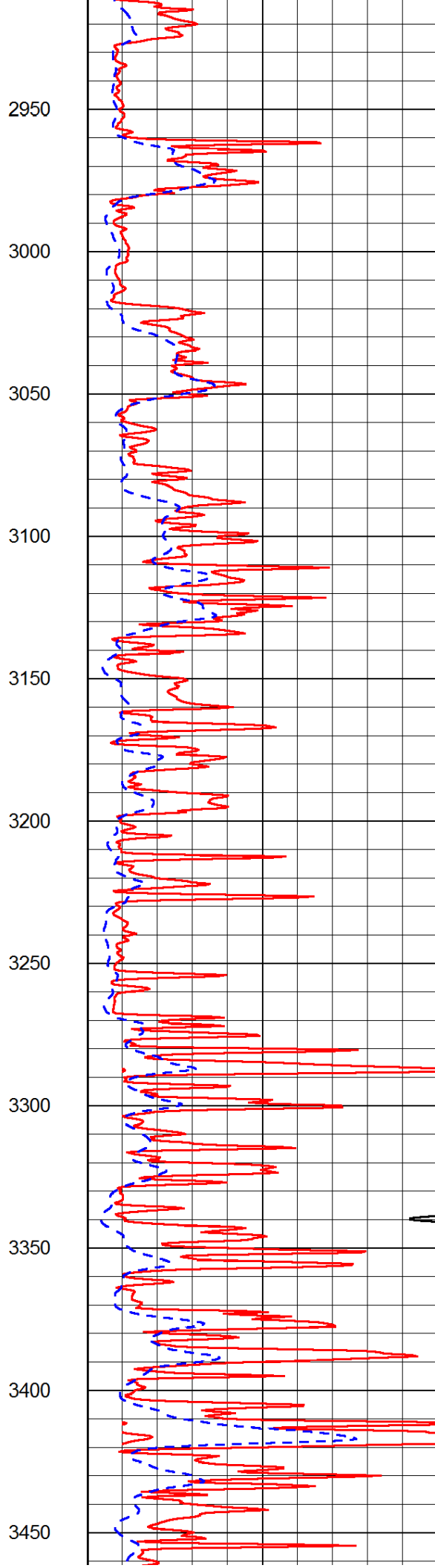
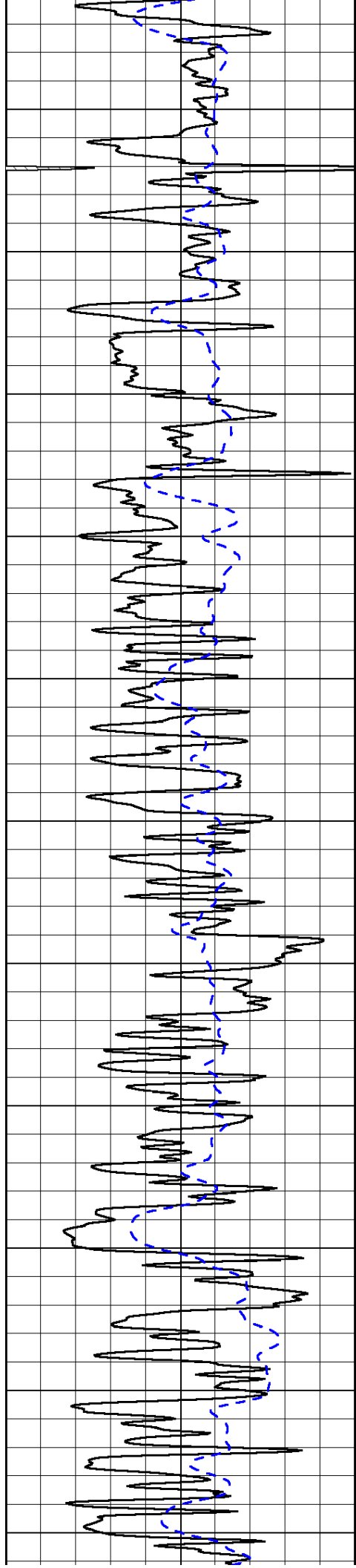


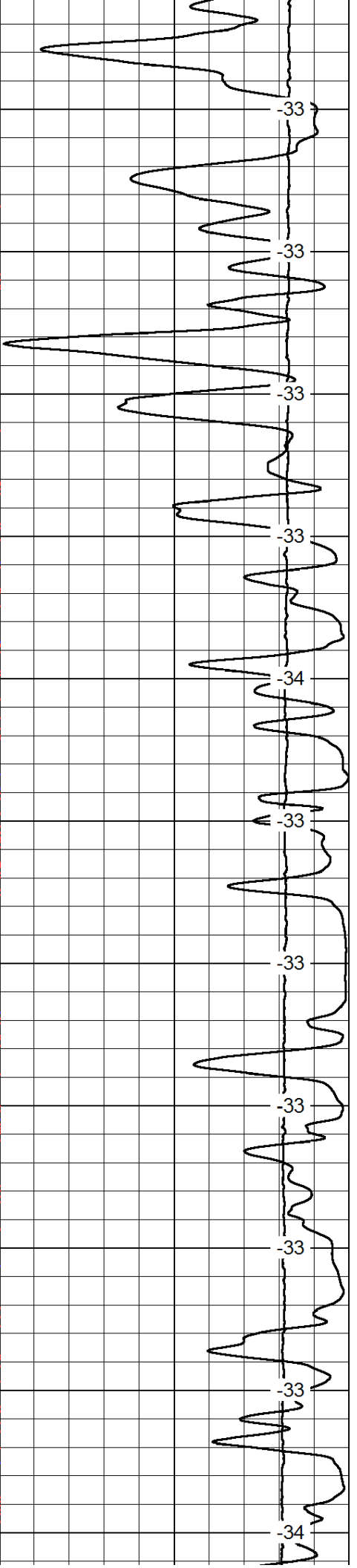
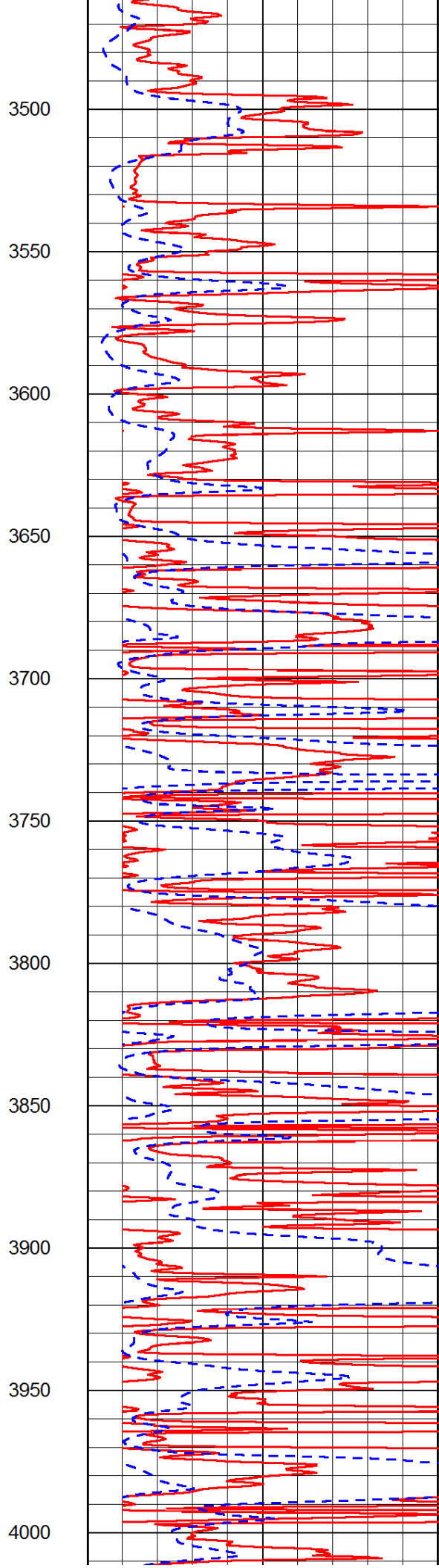
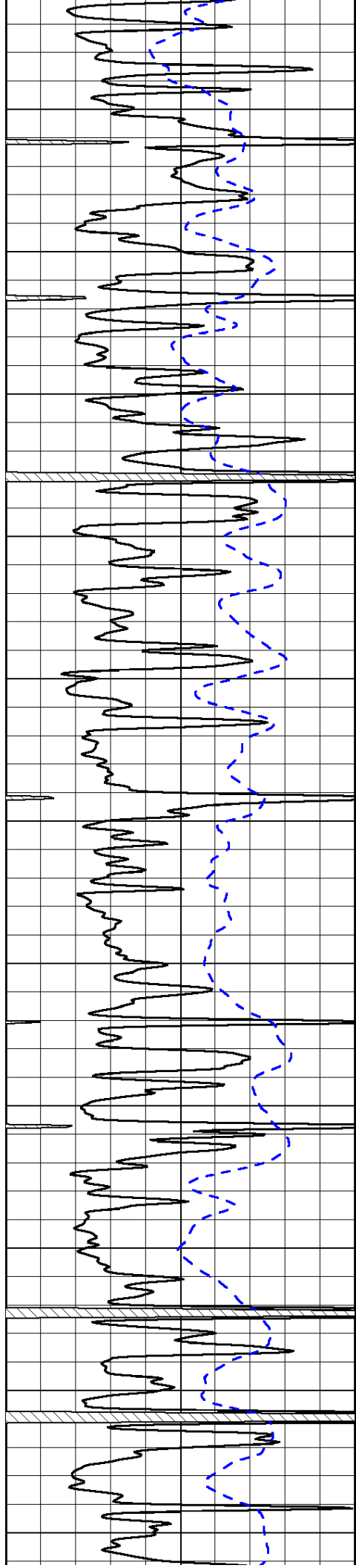


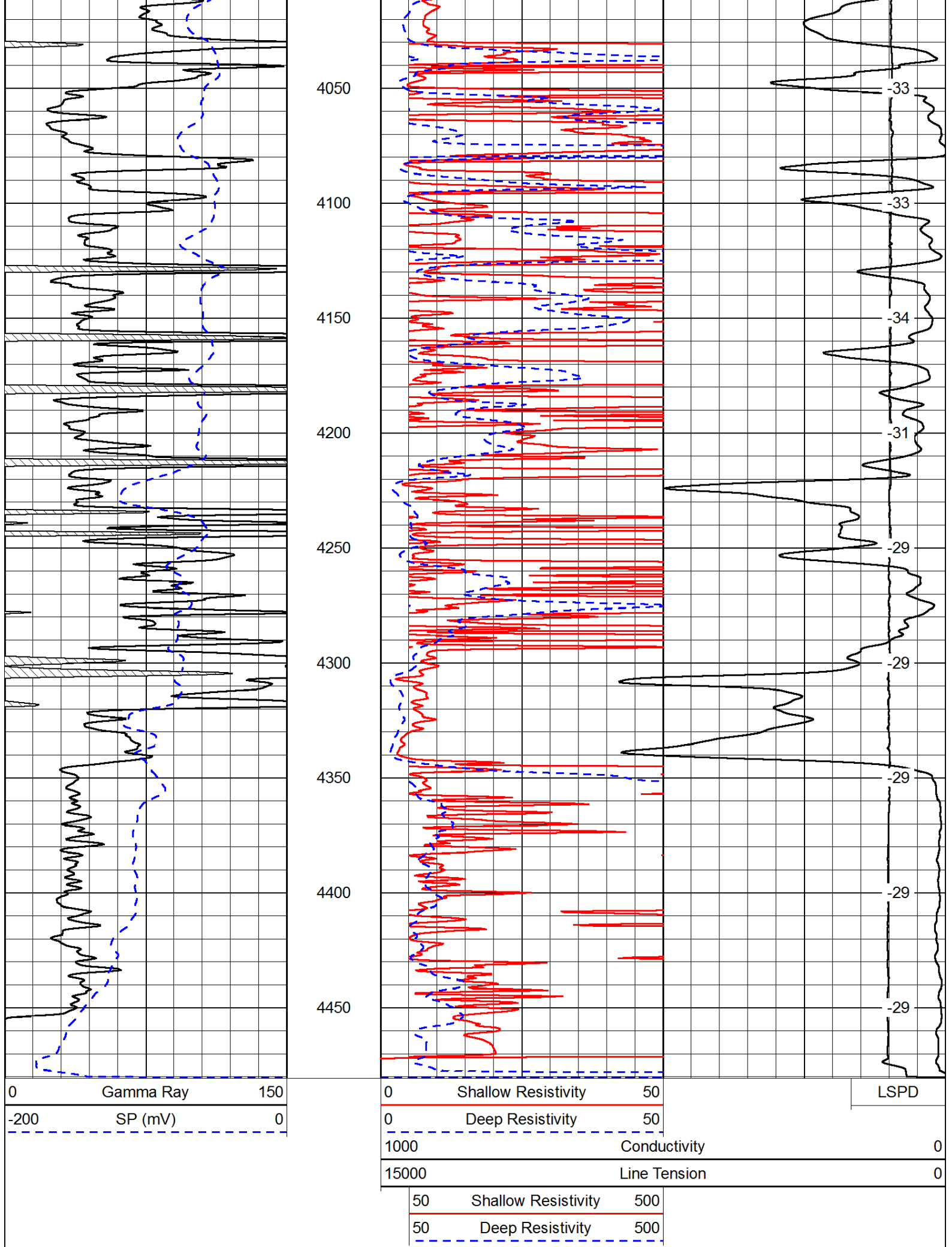












0 Gamma Ray 150
 -200 SP (mV) 0

0 Shallow Resistivity 50
 0 Deep Resistivity 50

1000 Conductivity 0
 15000 Line Tension 0

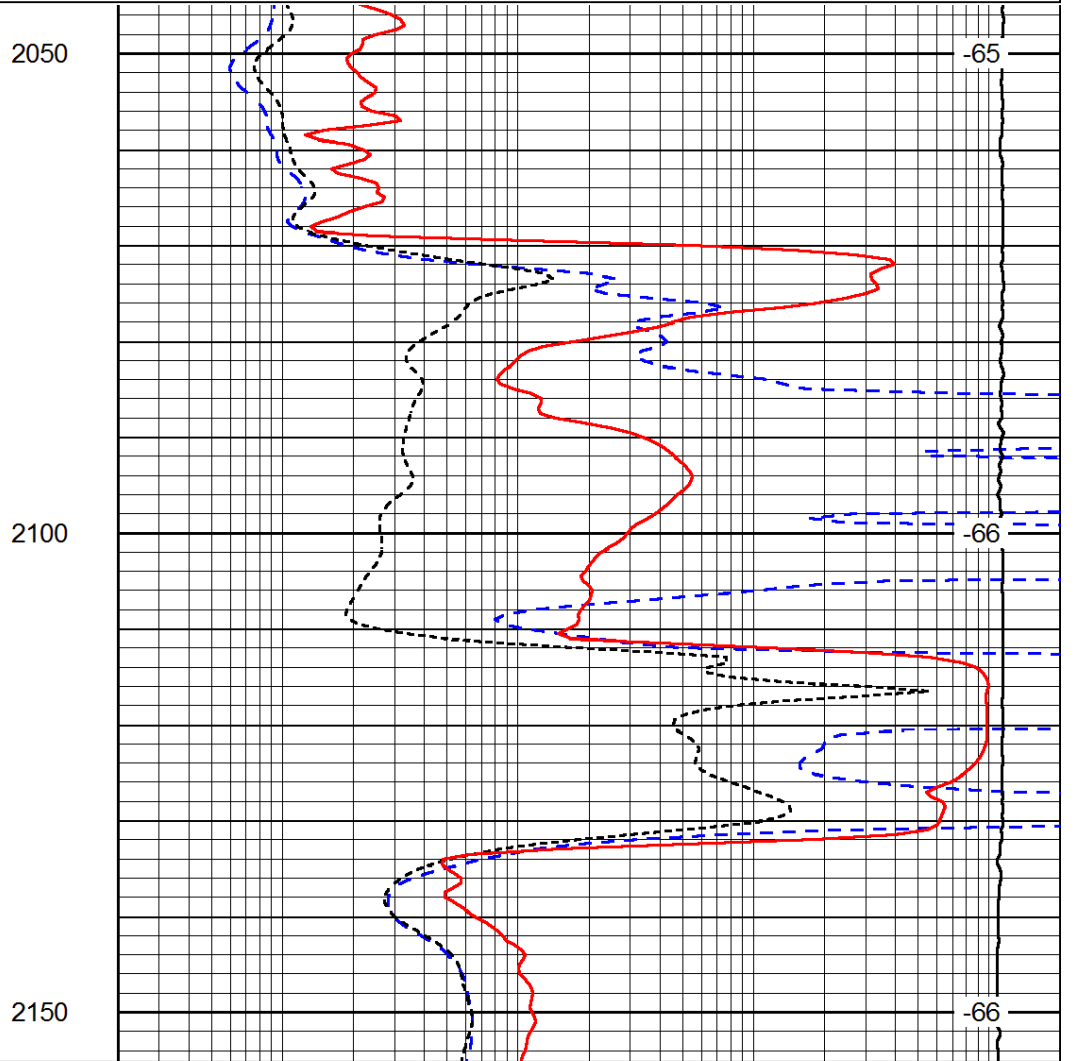
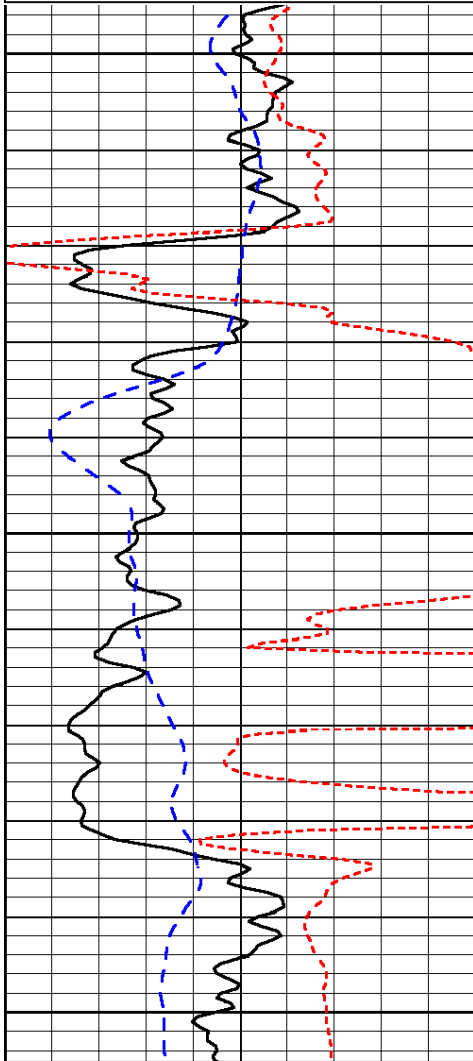
50 Shallow Resistivity 500
 50 Deep Resistivity 500

Database File: c:\warrior\data\black tea_krebs v #1\blacktea_krebs_v_1hd.db
 Dataset Pathname: dil/blckstck
 Presentation Format: dil
 Dataset Creation: Thu Apr 03 03:05:25 2014
 Charted by: Depth in Feet scaled 1:240

| | | |
|------|-----------|-----|
| 0 | Gamma Ray | 150 |
| -200 | SP (mV) | 0 |
| -160 | RxoRt | 40 |

| | | |
|-------|---------------------|------|
| 0.2 | Deep Resistivity | 2000 |
| 0.2 | Medium Resistivity | 2000 |
| 0.2 | Shallow Resistivity | 2000 |
| 15000 | Line Tension | 0 |

LSPD



| | | |
|------|-----------|-----|
| 0 | Gamma Ray | 150 |
| -200 | SP (mV) | 0 |
| -160 | RxoRt | 40 |

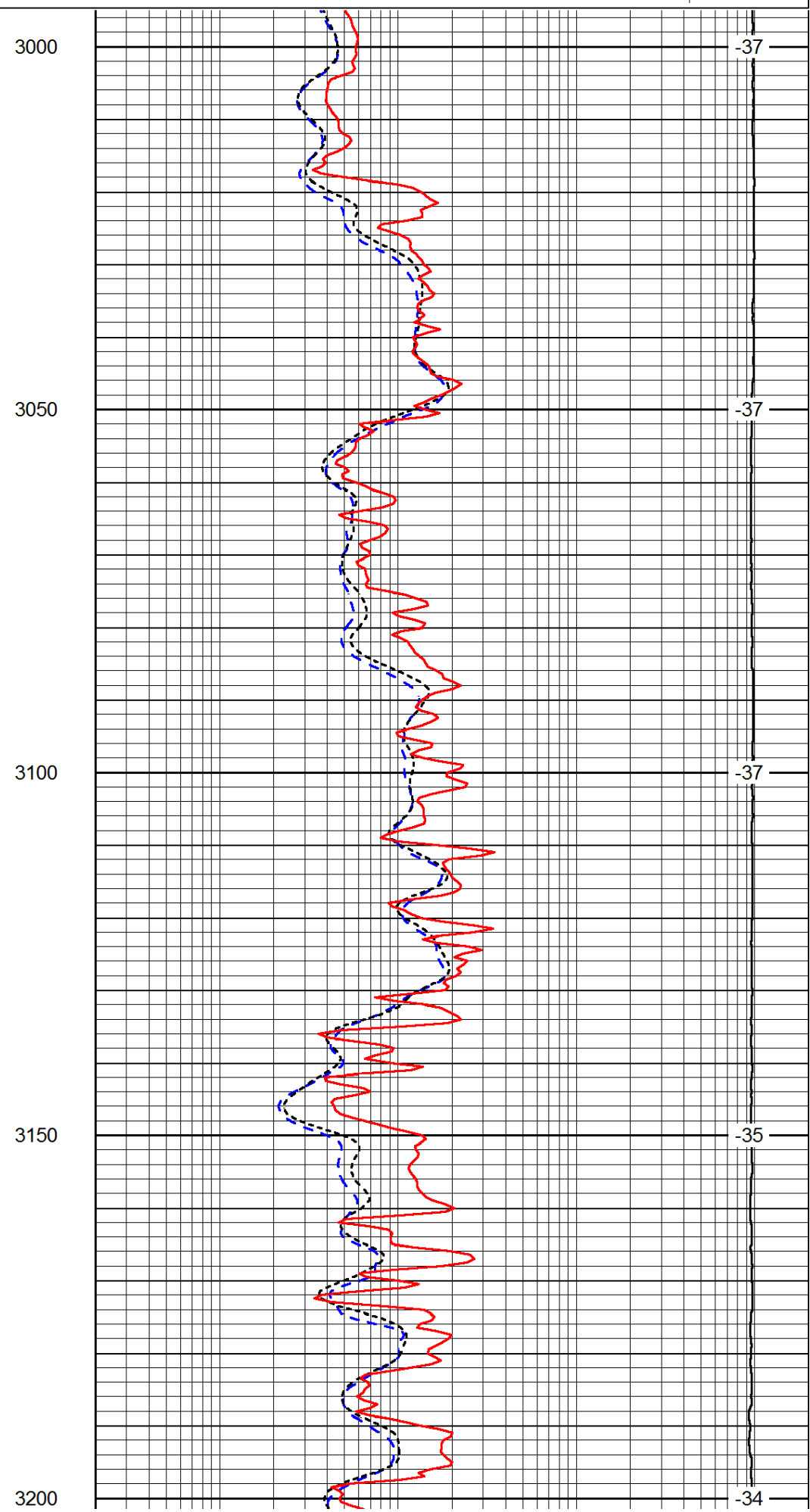
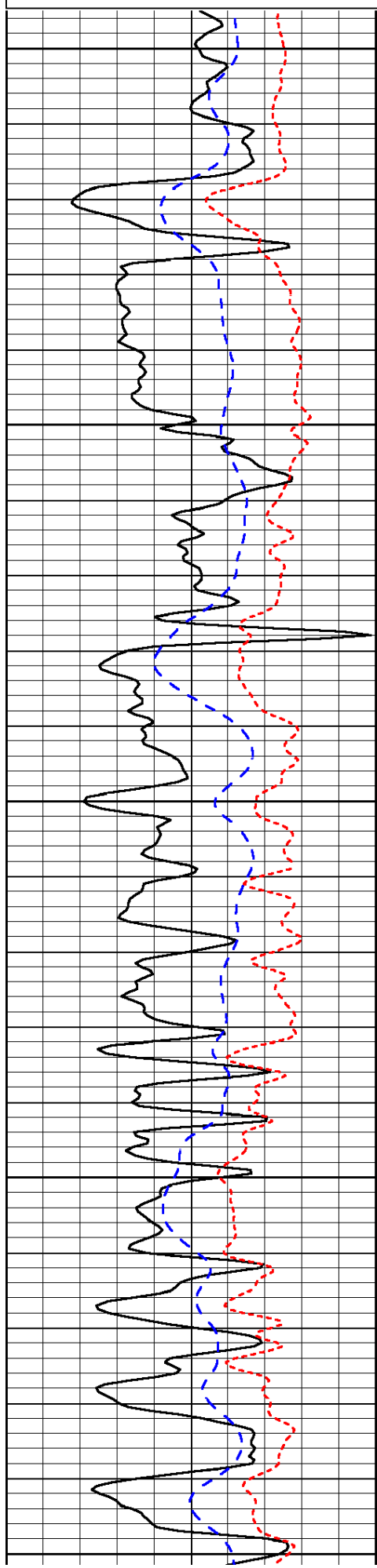
| | | |
|-------|---------------------|------|
| 0.2 | Deep Resistivity | 2000 |
| 0.2 | Medium Resistivity | 2000 |
| 0.2 | Shallow Resistivity | 2000 |
| 15000 | Line Tension | 0 |

LSPD

Database File: c:\warrior\data\black tea_krebs v #1\blacktea_krebs_v_1hd.db
 Dataset Pathname: dil/blckstck
 Presentation Format: dil
 Dataset Creation: Thu Apr 03 03:05:25 2014
 Charted by: Depth in Feet scaled 1:240

| | | |
|------|-----------|-----|
| 0 | Gamma Ray | 150 |
| -200 | SP (mV) | 0 |
| -160 | RxoRt | 40 |

| | | |
|-----|---------------------|------|
| 0.2 | Deep Resistivity | 2000 |
| 0.2 | Medium Resistivity | 2000 |
| 0.2 | Shallow Resistivity | 2000 |



3000

-37

3050

-37

3100

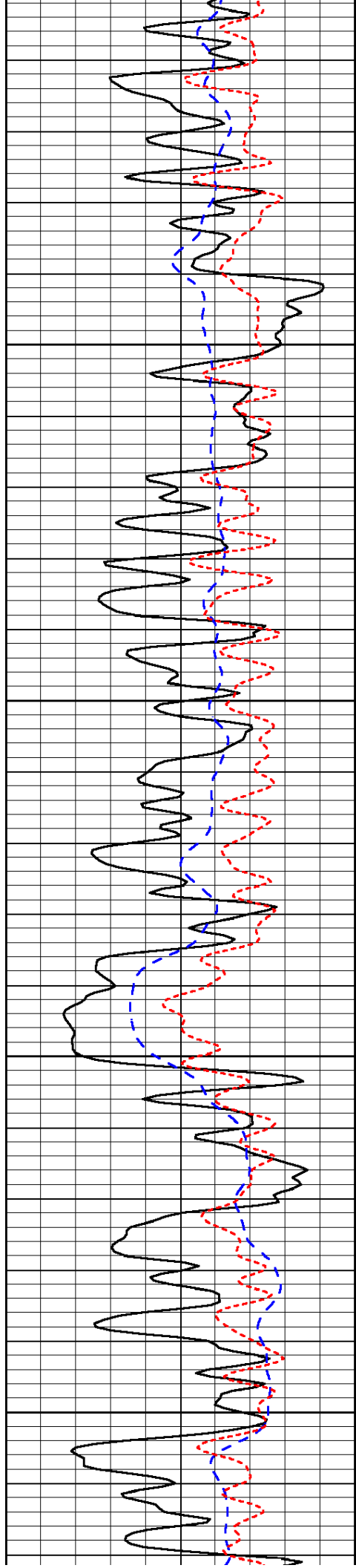
-37

3150

-35

3200

-34

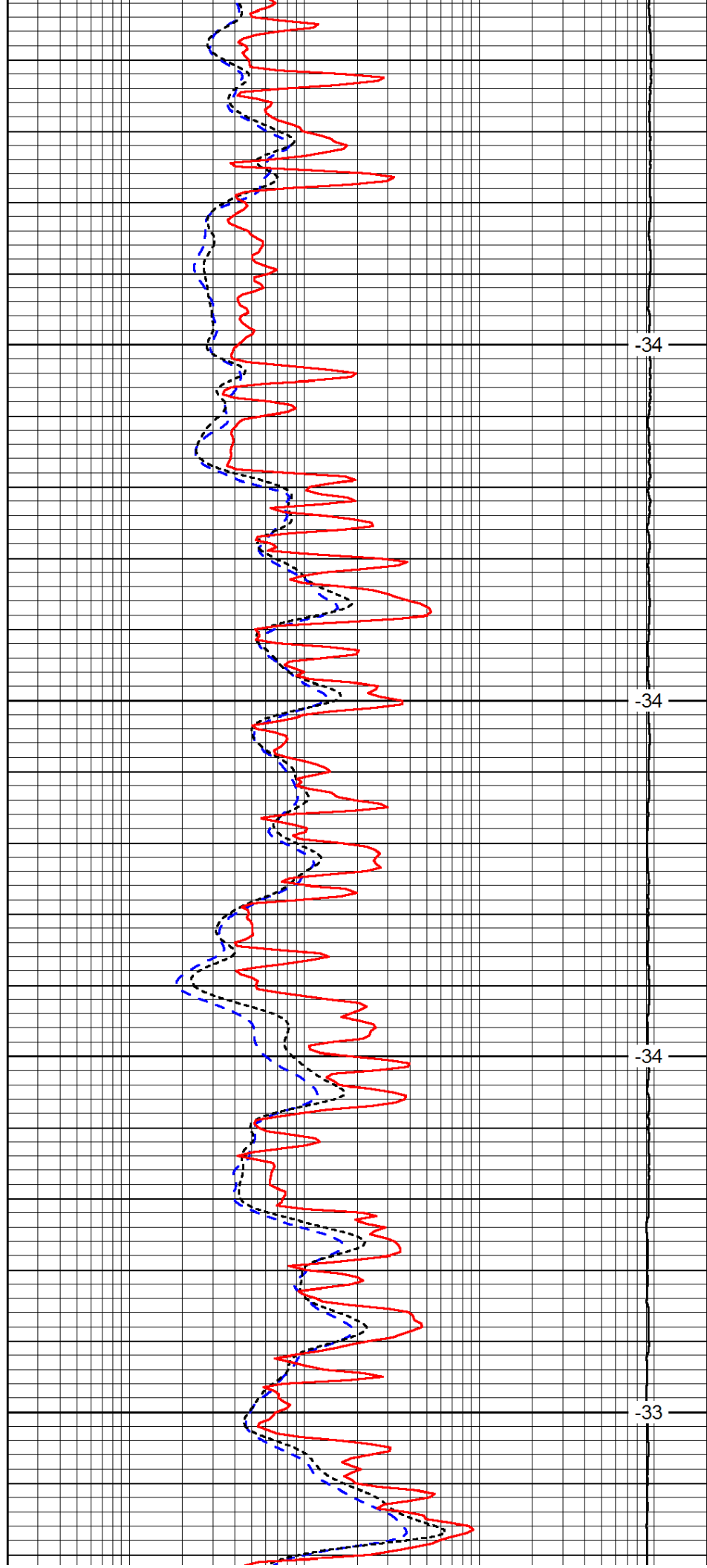


3250

3300

3350

3400

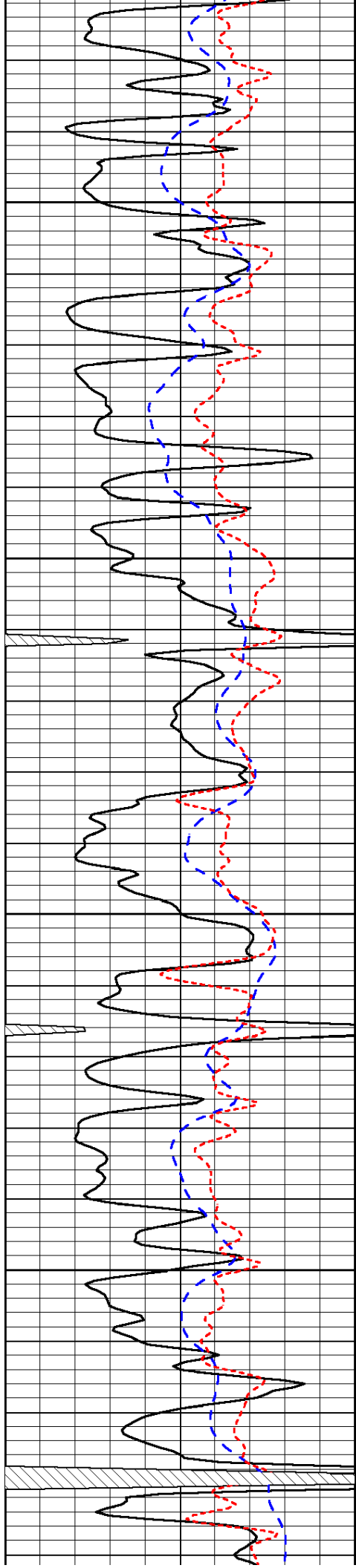


-34

-34

-34

-33

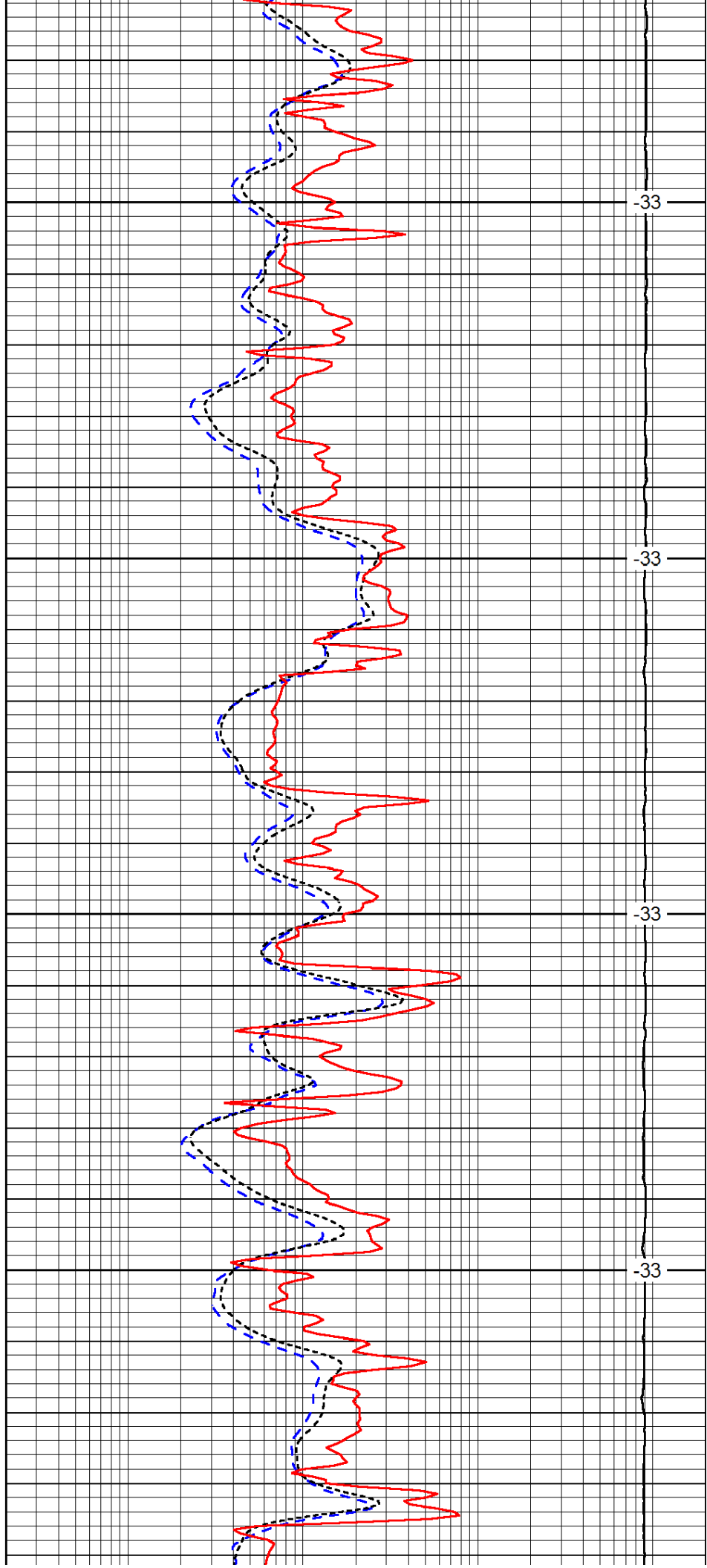


3450

3500

3550

3600

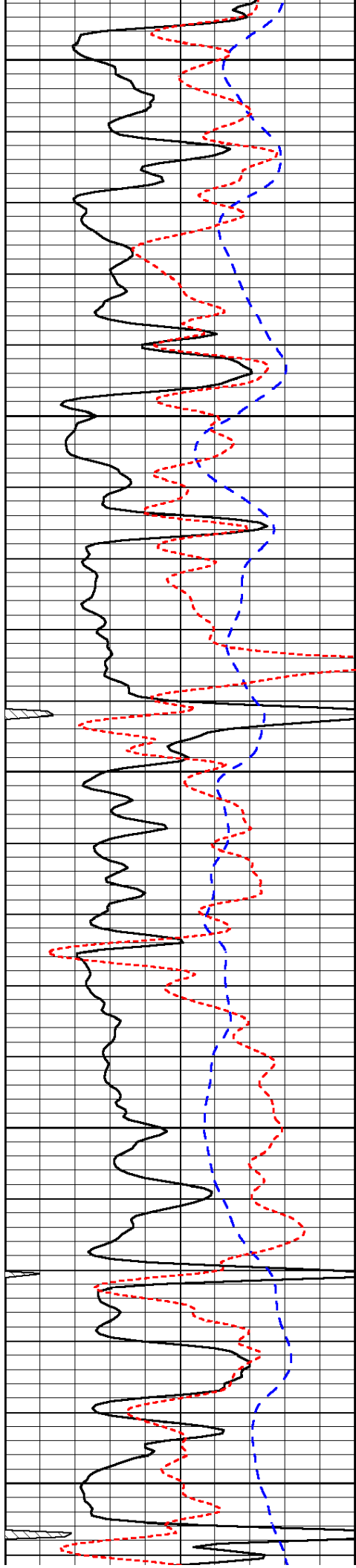


-33

-33

-33

-33



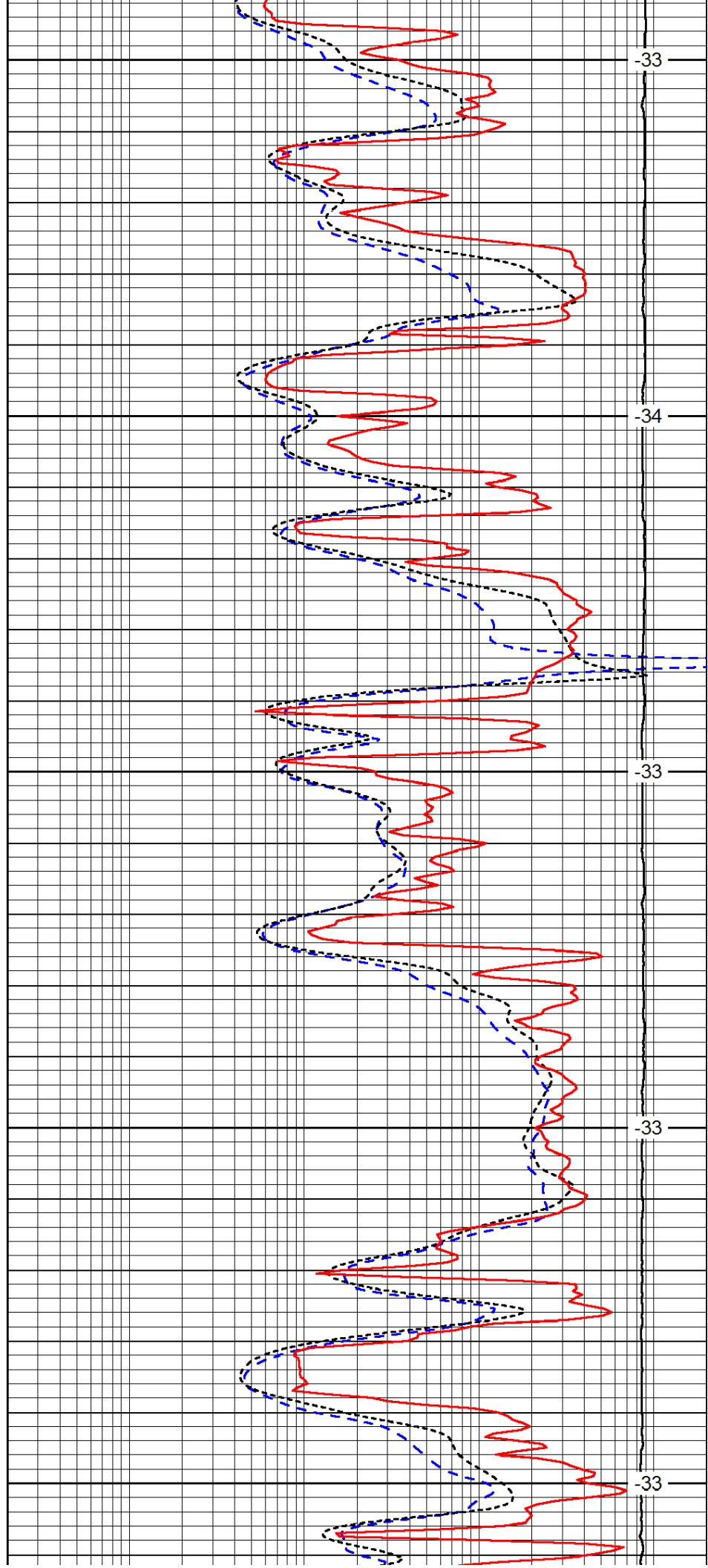
3650

3700

3750

3800

3850



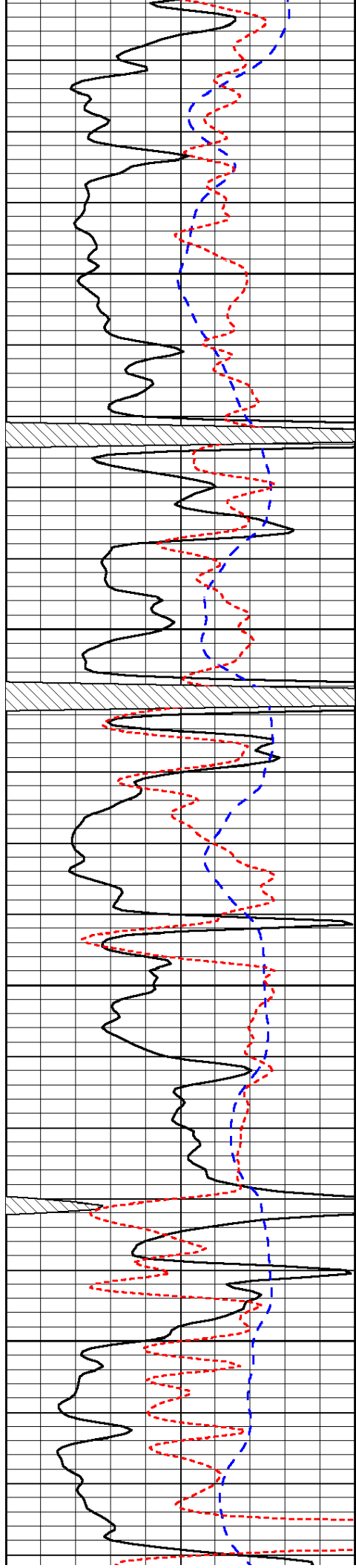
-33

-34

-33

-33

-33

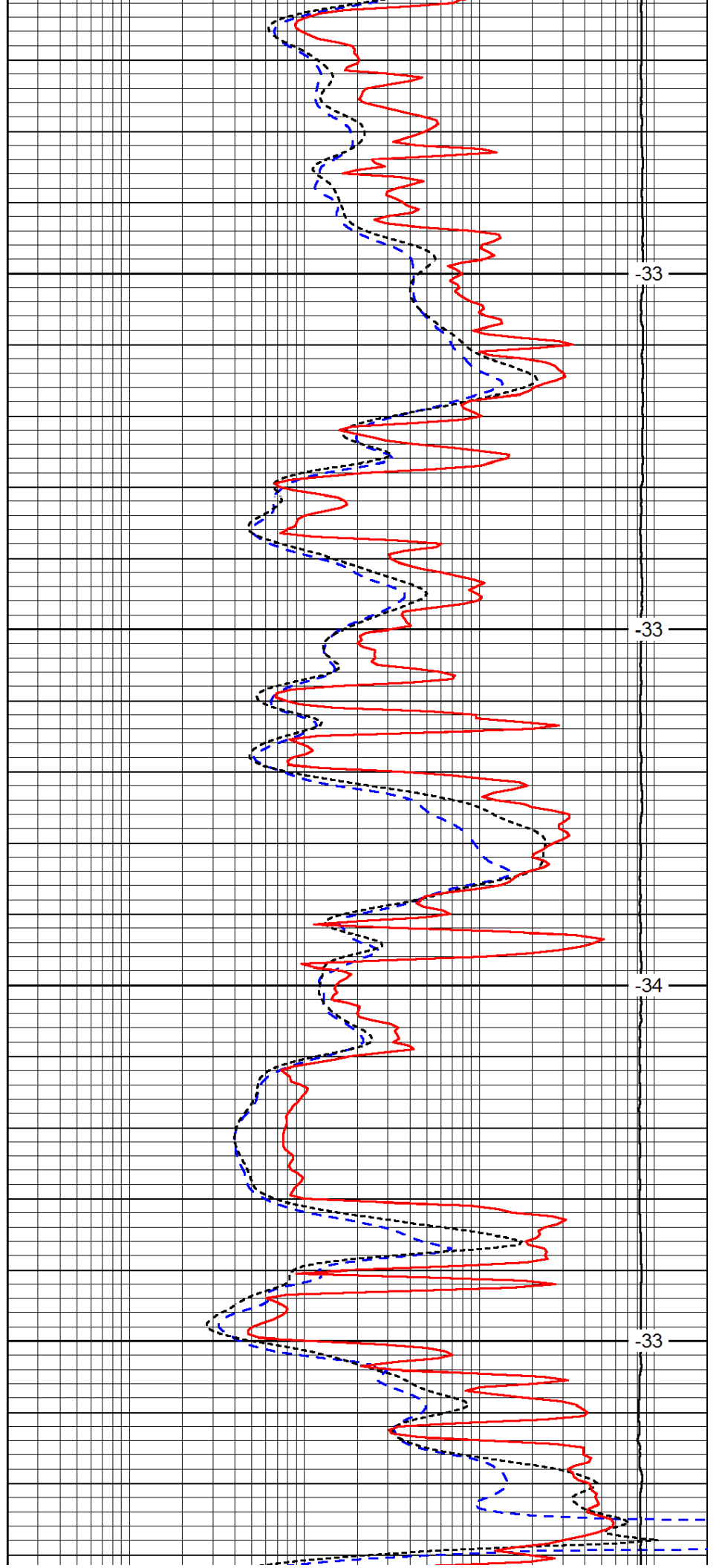


3900

3950

4000

4050

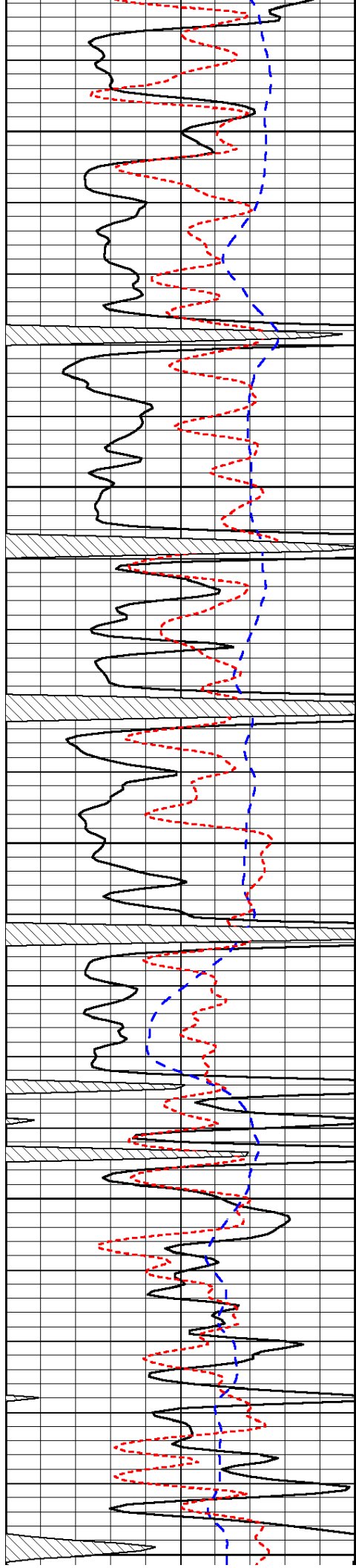


-33

-33

-34

-33



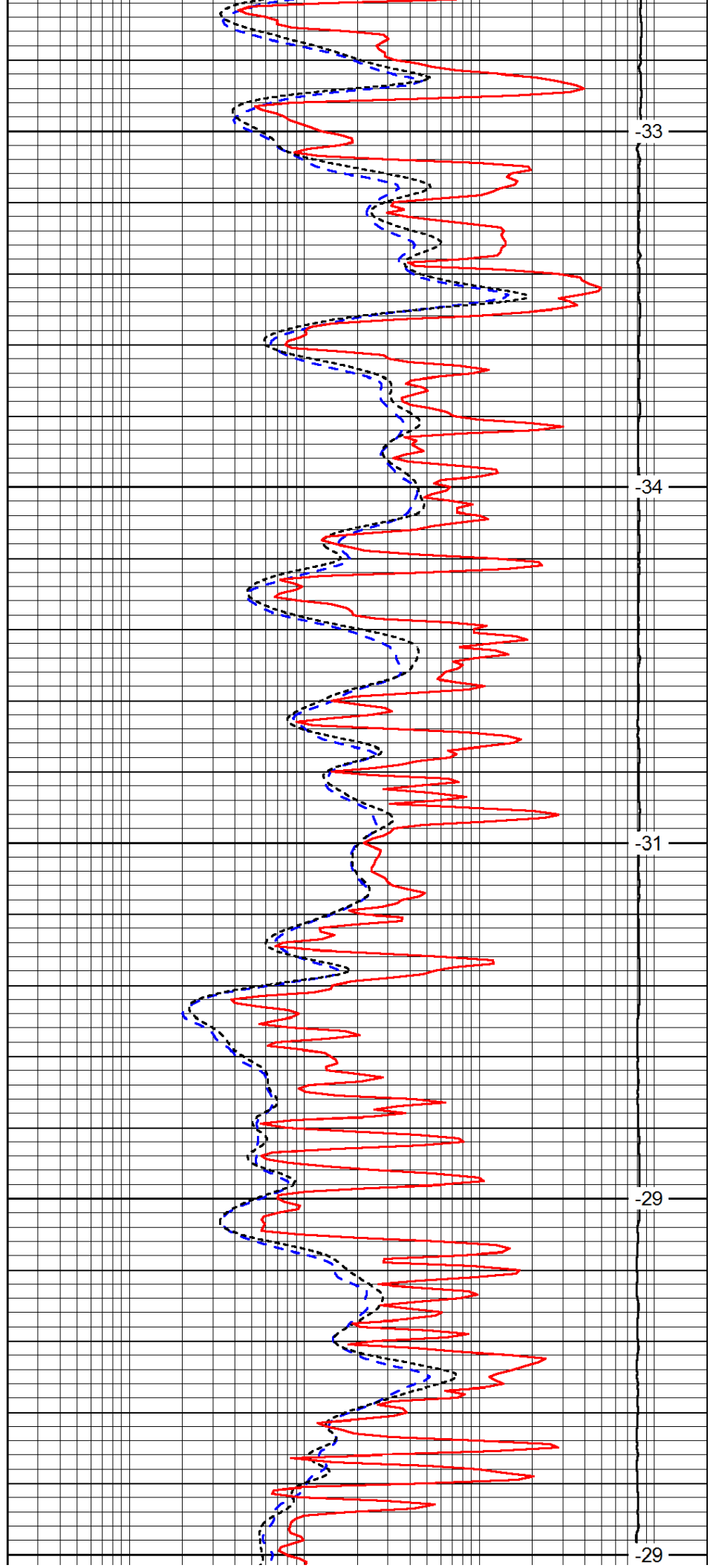
4100

4150

4200

4250

4300



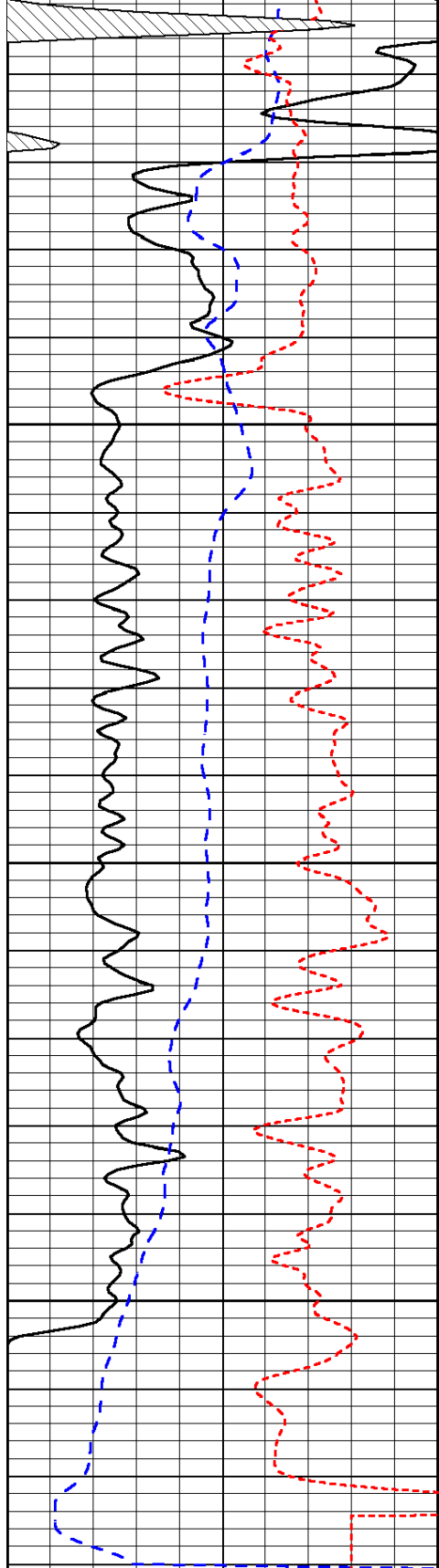
33

34

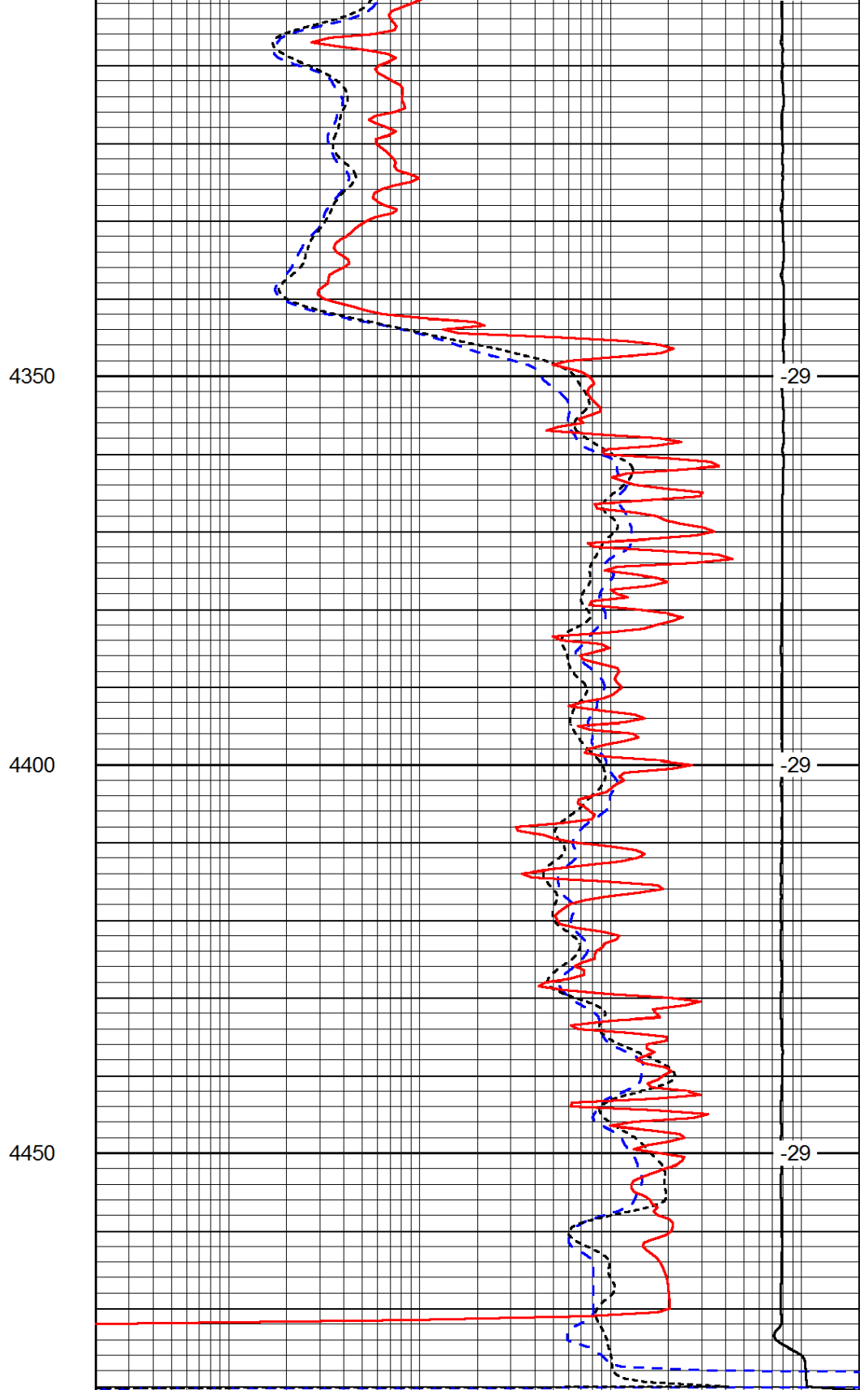
31

29

29



| | | |
|------|-----------|-----|
| 0 | Gamma Ray | 150 |
| -200 | SP (mV) | 0 |
| -160 | RxoRt | 40 |



| | | |
|-------|---------------------|------|
| 0.2 | Deep Resistivity | 2000 |
| 0.2 | Medium Resistivity | 2000 |
| 0.2 | Shallow Resistivity | 2000 |
| 15000 | Line Tension | 0 |

LSPD