



Pioneer Energy Services

## Dual Compensated Porosity Log

15-109-21,266-00-00

API No.

Company **Black Tea Oil, LLC**  
 Well **Krebs V # 1**  
 Field **Bridges**  
 County **Logan** State **Kansas**

Location  
 2,970' FSL & 813' FEL  
 Sec: 33 Twp: 14S Rge: 32W

Other Services  
 DIL  
 MEL/BHCS

Permanent Datum Ground Level Elevation 2669  
 Log Measured From Kelly Bushing 8 Ft. Above Perm. Datum  
 Drilling Measured From Kelly Bushing

Elevation  
 K.B. 2677  
 D.F. 2669  
 G.L. 2669

Date	4/3/2014
Run Number	One
Type Log	CNL / CDL
Depth Driller	4440
Depth Logger	4475
Bottom Logged Interval	4454
Top Logged Interval	3000
Type Fluid In Hole	Chemical
Salinity, PPM CL	7000
Density	8.9
Level	Full
Max. Rec. Temp. F	120
Operating Rig Time	4 1/2 Hours
Equipment -- Location	108 Hays
Recorded By	J. Long
Witnessed By	Chris Leiker

**Borehole Record**

Run No.	Bit	From	To	Size	Wgt.	From	To
1	12.25	00	263	8.625	24#	00	263
2	7.875	263	4440				

**Casing Record**

<<< Fold Here >>>

All interpretations are opinions based on inferences from electrical or other measurements and we cannot and do not guarantee the accuracy or correctness of any interpretation, and we shall not, except in the case of gross or willful negligence on our part, be liable or responsible for any loss, costs, damages, or expenses incurred or sustained by anyone resulting from any interpretation made by any of our officers, agents or employees. These interpretations are also subject to our general terms and conditions set out in our current Price Schedule.

**Comments**

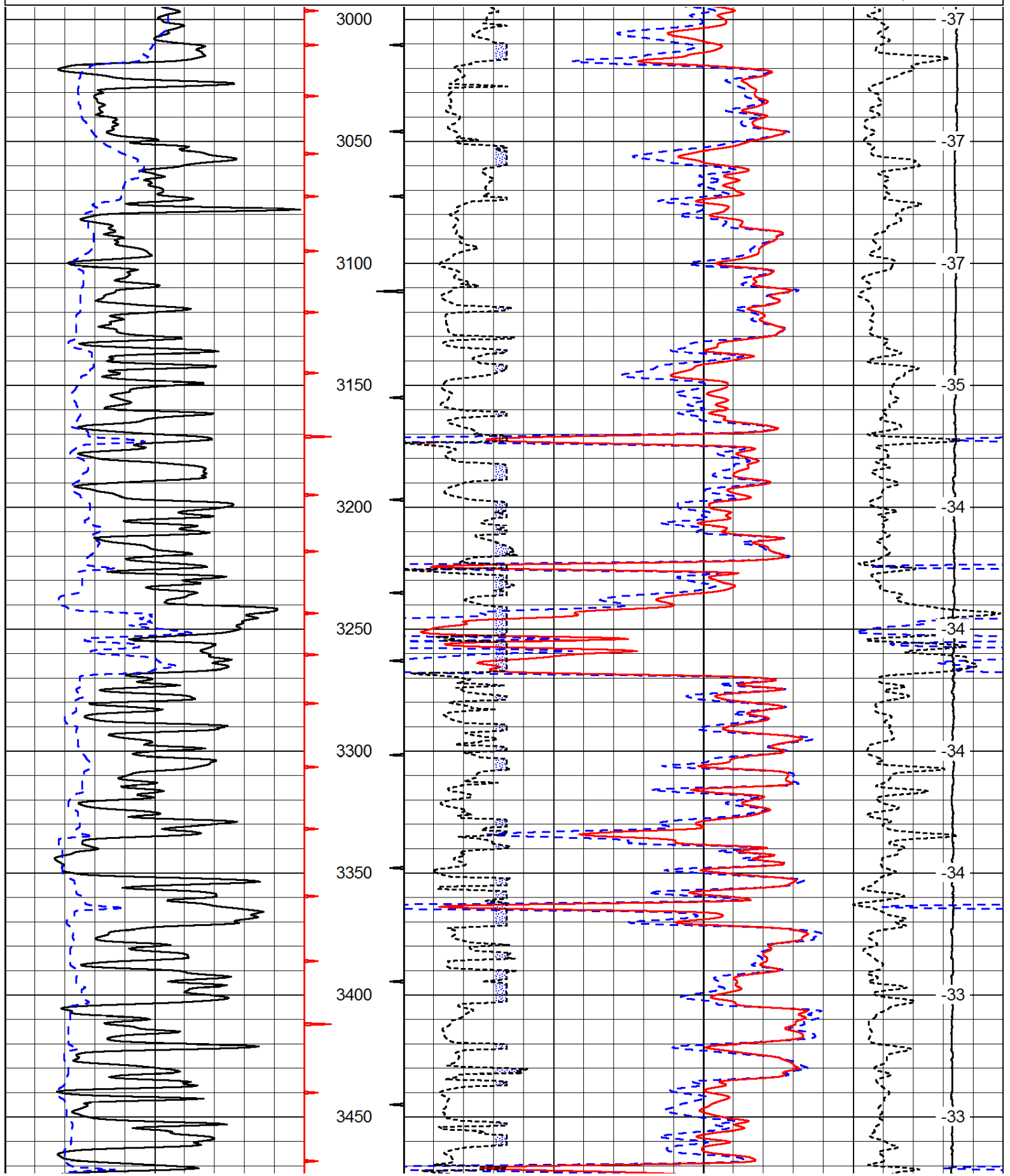
Thank you for using Pioneer Energy Services  
[www.pioneerenergy.com](http://www.pioneerenergy.com)  
 785 625 3858

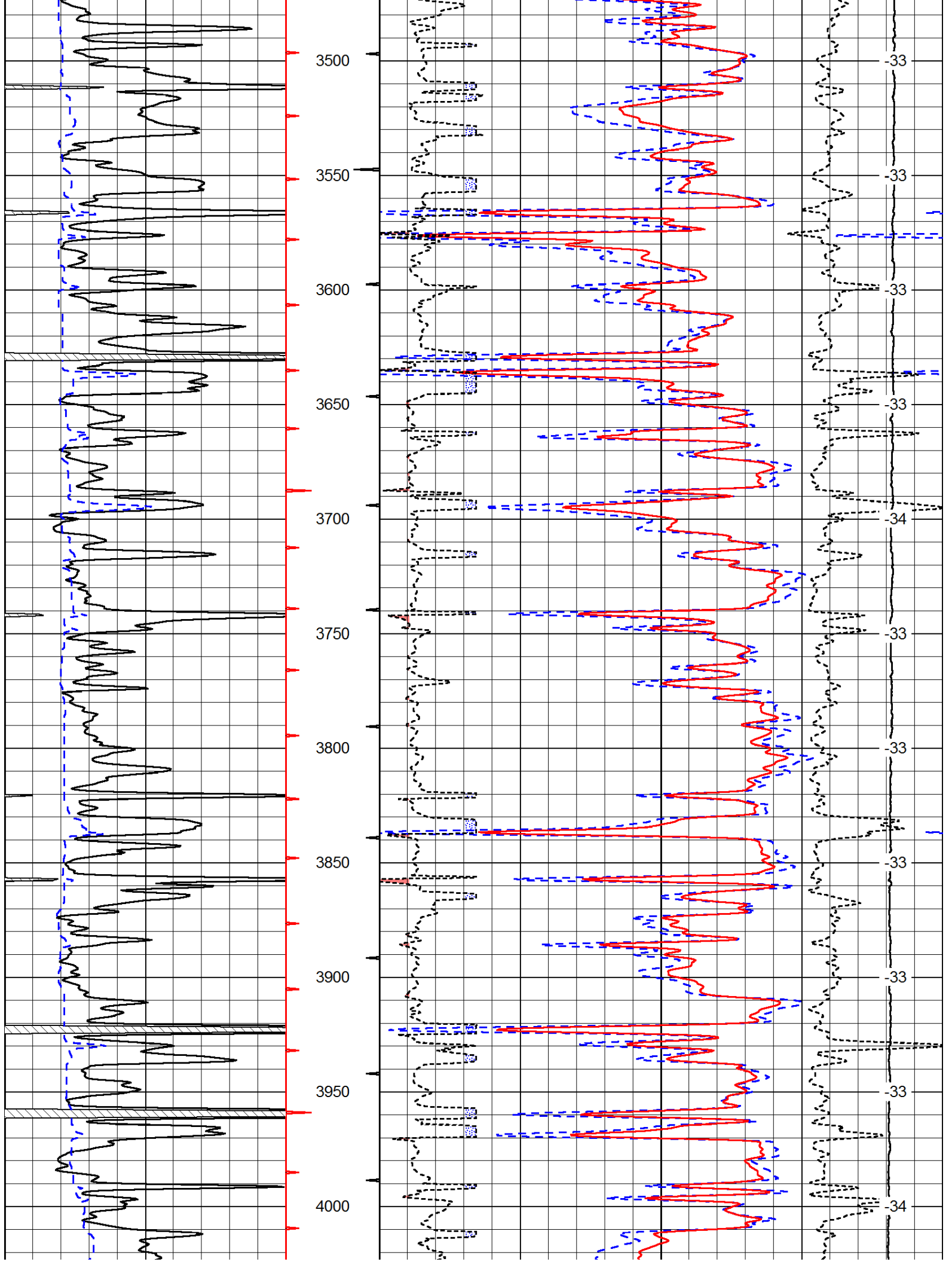
Oakley, South to Jayhawk Road, 1 1/2 South, 1 West, 1 South Into

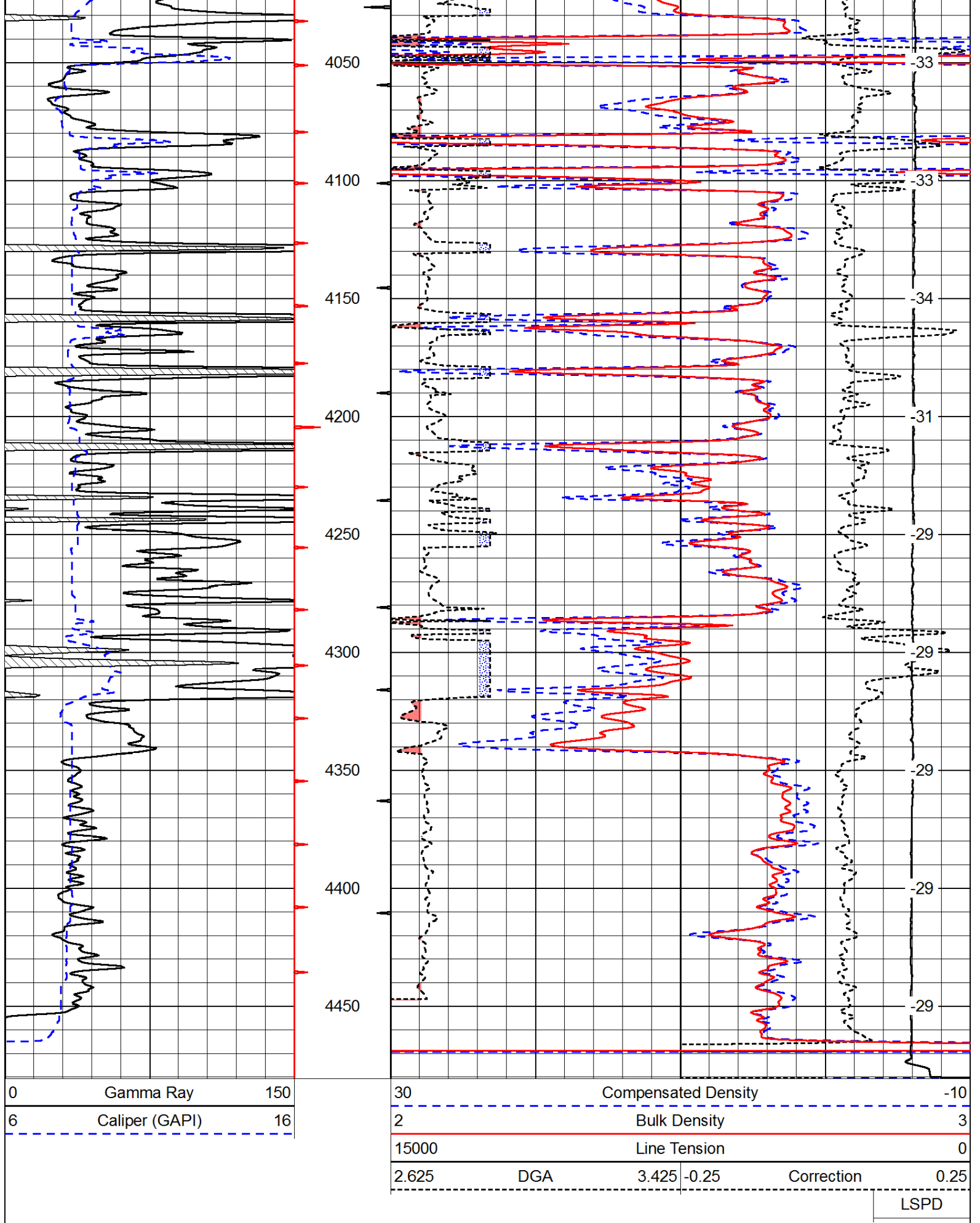
Database File: c:\warrior\data\black tea\_krebs v #1\blacktea\_krebs\_v\_1hd.db  
 Dataset Pathname: dil/blckstck  
 Presentation Format: cdl  
 Dataset Creation: Thu Apr 03 03:05:25 2014  
 Charted by: Depth in Feet scaled 1:600

0	Gamma Ray	150
6	Caliper (GAPI)	16

30	Compensated Density		-10
2	Bulk Density		3
15000	Line Tension		0
2.625	DGA	3.425	-0.25
			Correction
			LSPD



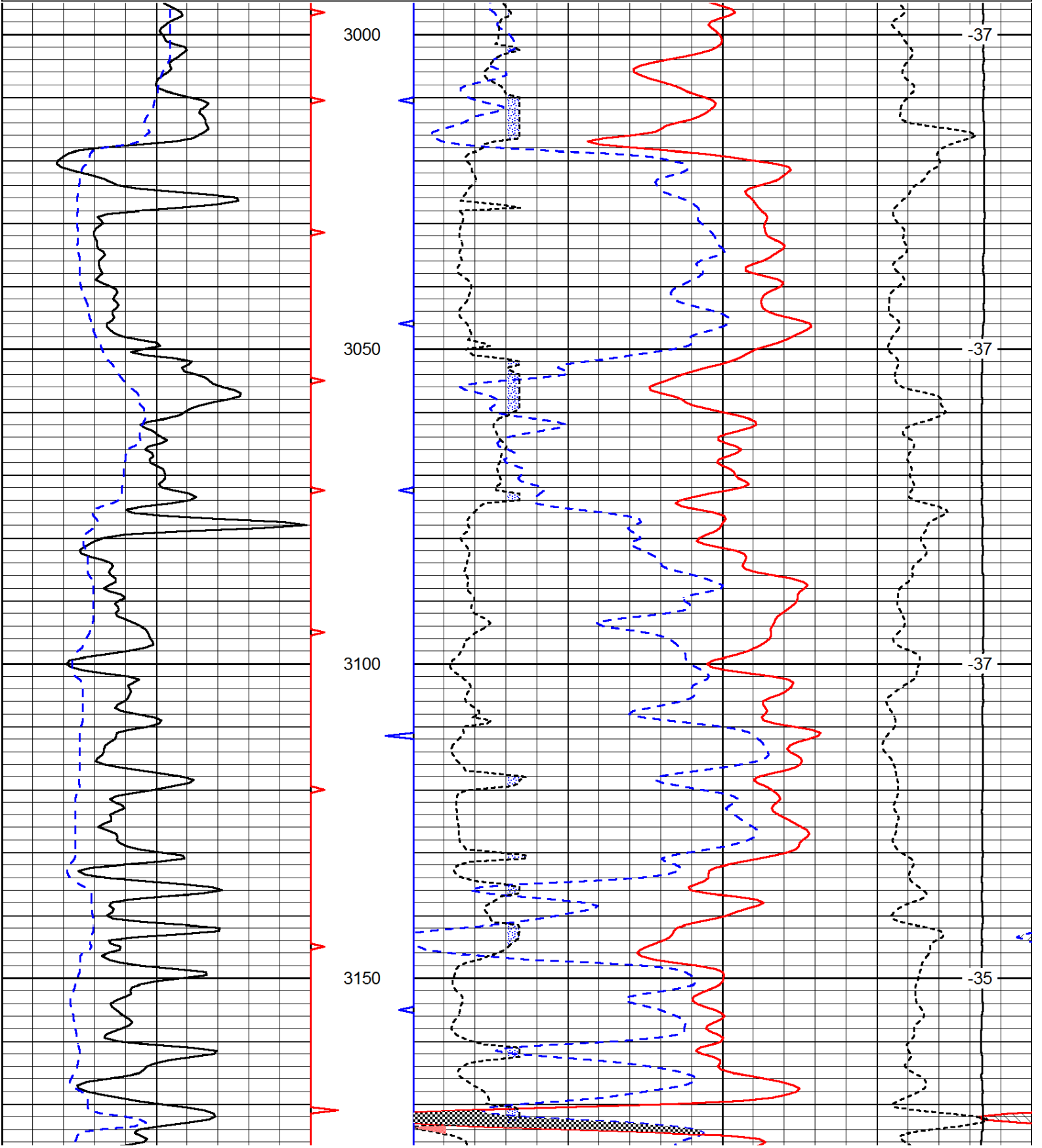


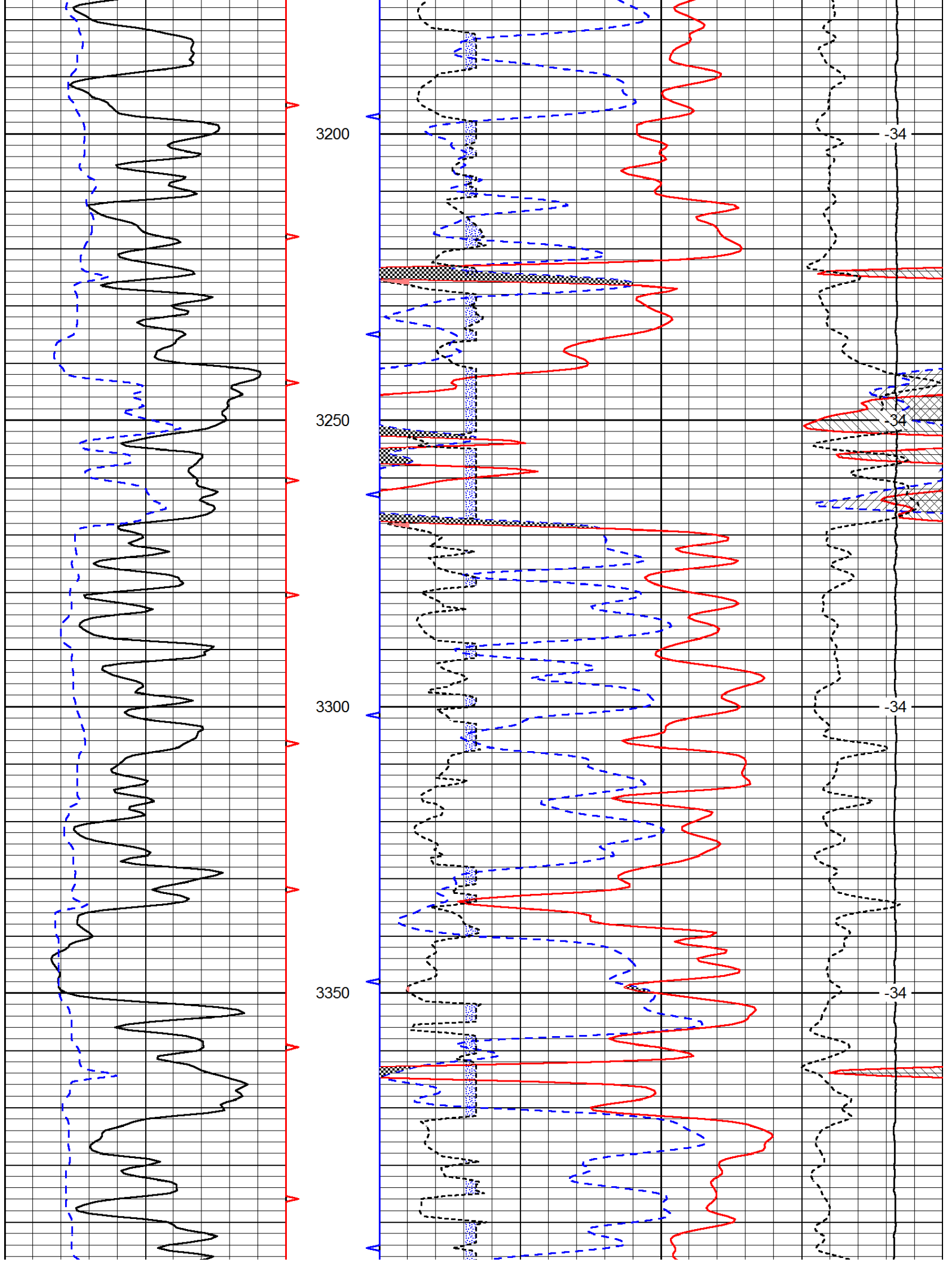


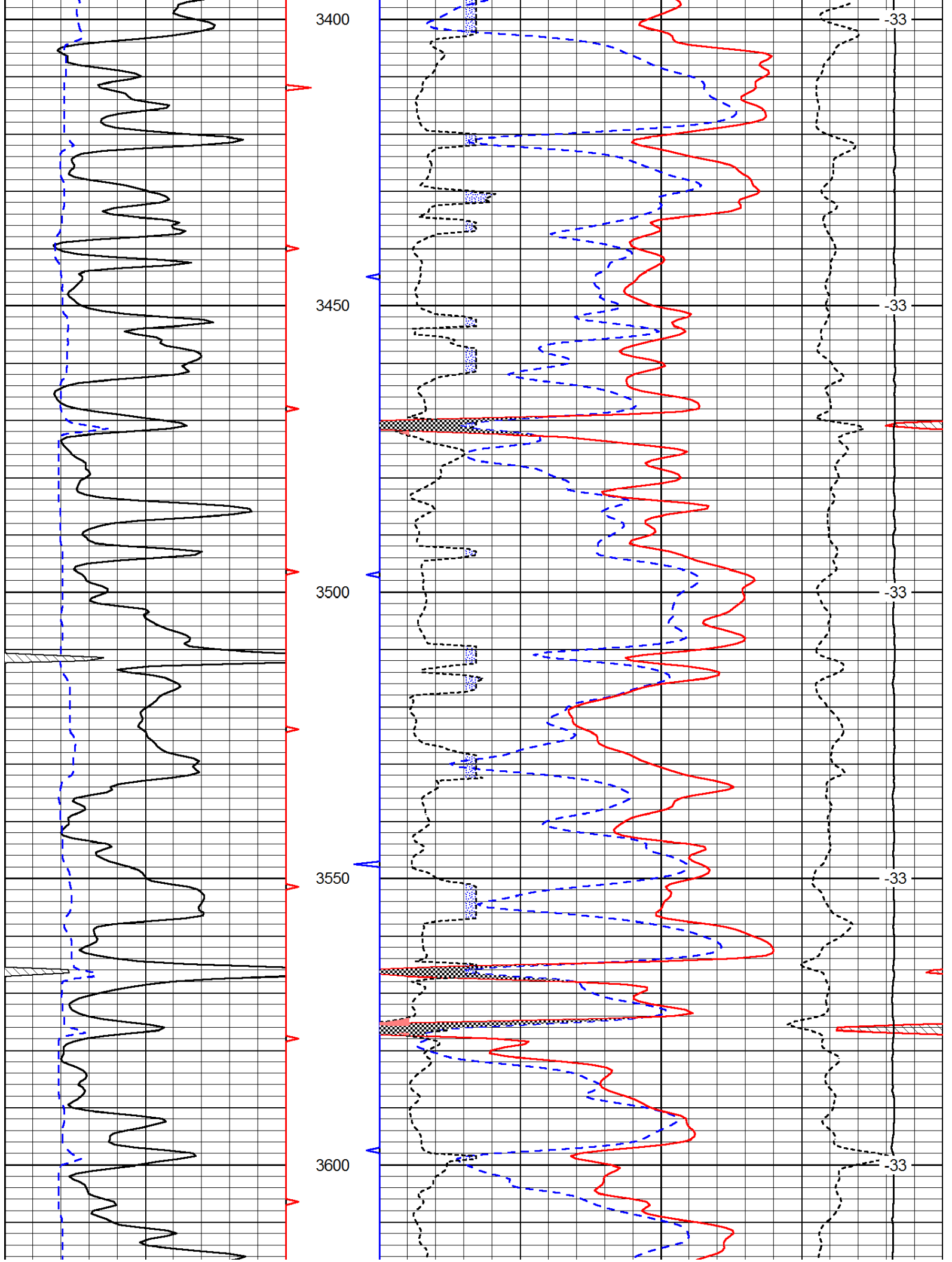
Dataset Pathname: ul/bickster  
 Presentation Format: cndlspec  
 Dataset Creation: Thu Apr 03 03:05:25 2014  
 Charted by: Depth in Feet scaled 1:240

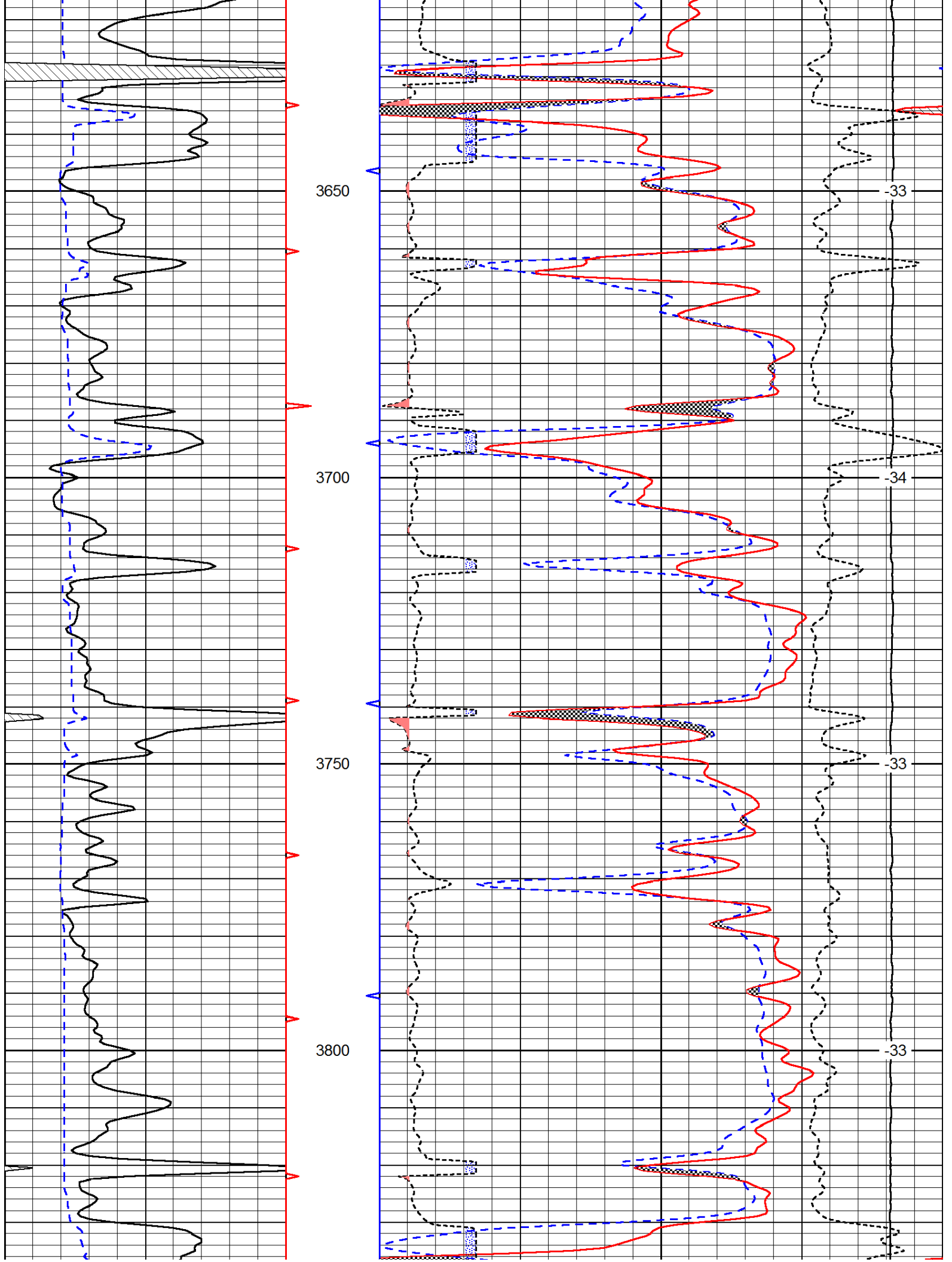
0	Gamma Ray	150	30	Compensated Neutron (Limestone)		-10
6	Caliper (GAPI)	16	30	Compensated Density (Limestone)		-10
			2.625	DGA	3.425	-0.25
			Correction			0.25
			Line Tension			0

LSPD

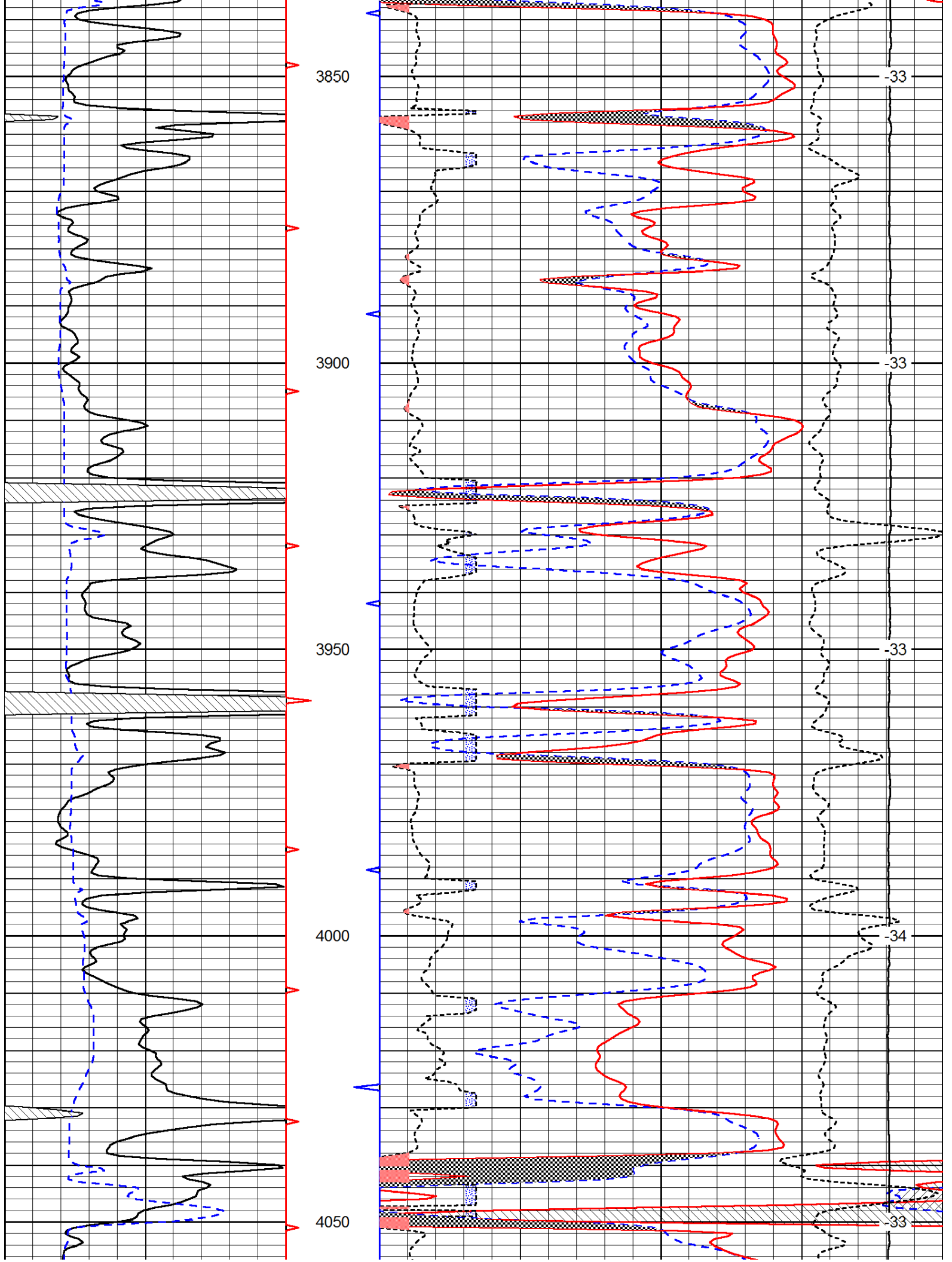


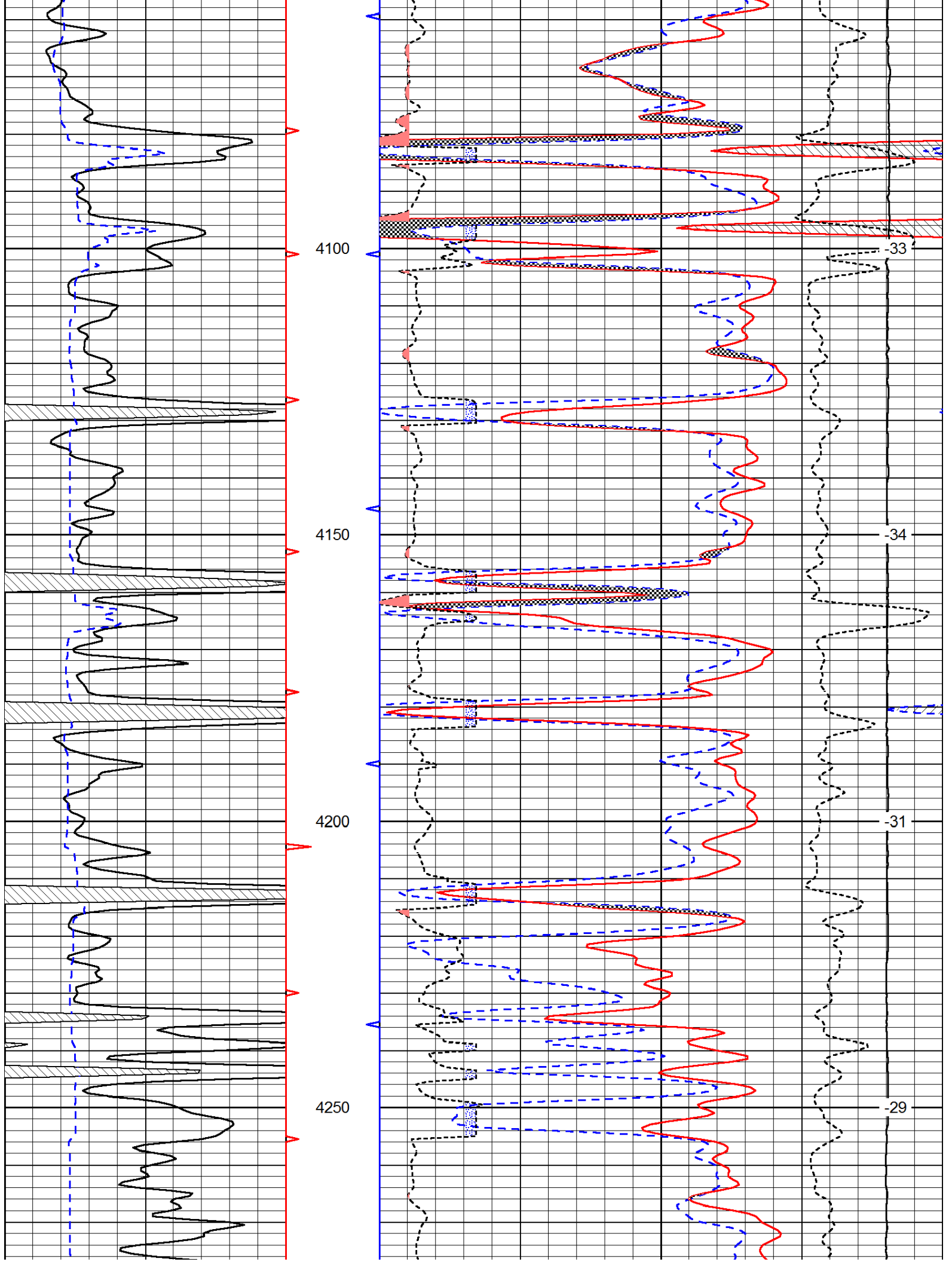


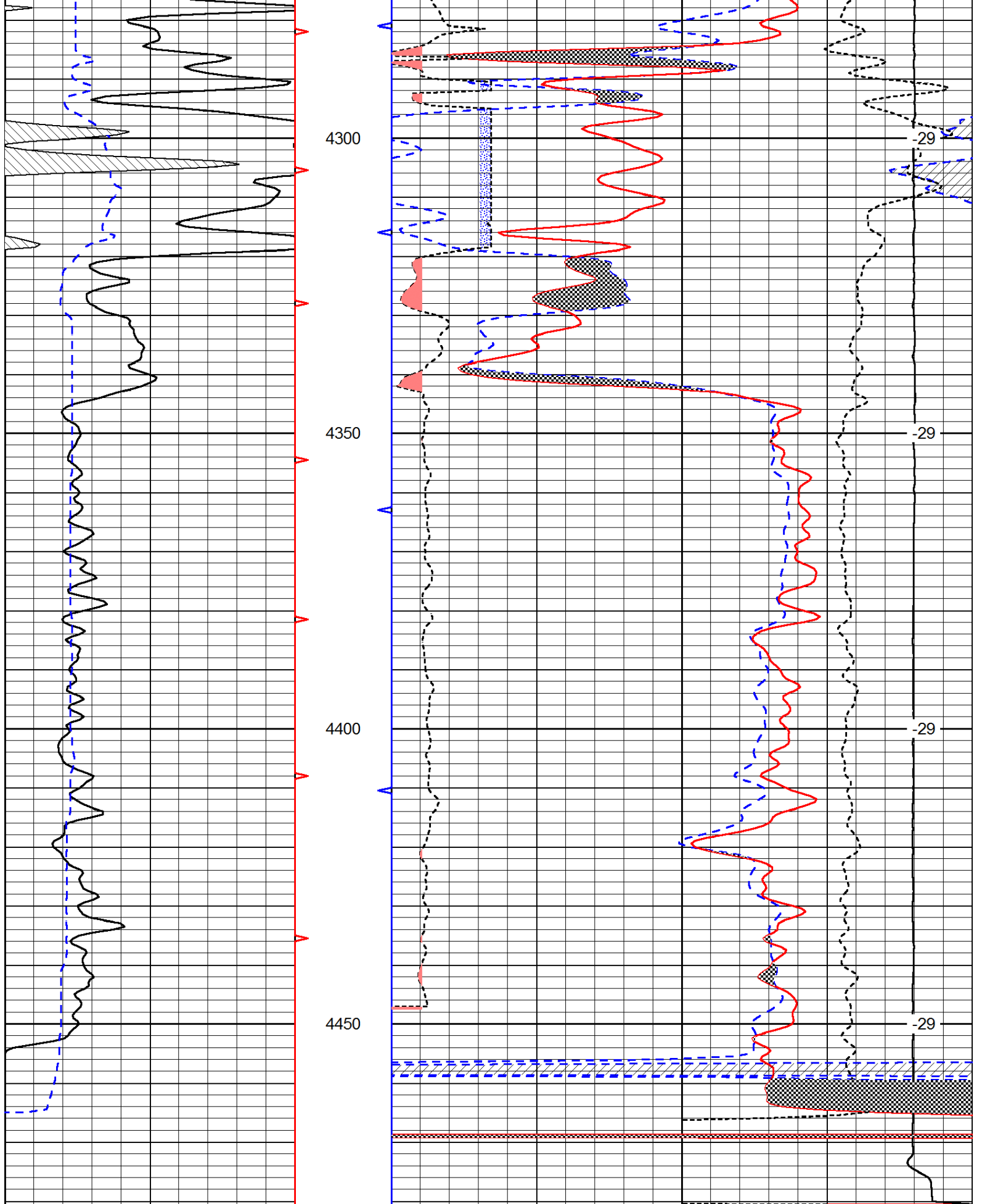












0	Gamma Ray	150
6	Caliper (GAPI)	16

30	Compensated Neutron (Limestone)	-10
30	Compensated Density (Limestone)	-10
2.625	DGA	3.425
		-0.25
	Correction	0.25

15000

Line tension

0

LSPD