



Pioneer Energy Services

Microresistivity Log

15-109-21,266-00-00

API No.

Company **Black Tea Oil, LLC**

Well **Krebs V # 1**

Field **Bridges**

County **Logan** State

Kansas

Location **2,970' FSL & 813' FEL**

Other Services
CNL/CDL
DIL/BHCS

Sec: **33** Twp: **14S** Rge: **32W**

Permanent Datum **Ground Level** Elevation **2669**
Log Measured From **Kelly Bushing** **8** Ft. Above Perm. Datum
Drilling Measured From **Kelly Bushing**

Elevation
K.B. 2677
D.F. 2669
G.L. 2669

| | |
|------------------------|-----------------|
| Date | 4/3/2014 |
| Run Number | Two |
| Depth Driller | 4440 |
| Depth Logger | 4475 |
| Bottom Logged Interval | 4474 |
| Top Log Interval | 3000 |
| Casing Driller | 8.625 @ 263 |
| Casing Logger | 260 |
| Bit Size | 7.875 |
| Type Fluid in Hole | Chemical |
| Salinity, ppm CL | 7000 |
| Density / Viscosity | 8.9 45 |
| pH / Fluid Loss | 10.5 8.0 |
| Source of Sample | Flowline |
| Rm @ Meas. Temp | .48 @ 64 |
| Rmf @ Meas. Temp | .36 @ 64 |
| Rmc @ Meas. Temp | .65 @ 64 |
| Source of Rmf / Rmc | Charts |
| Rm @ BHT | .26 @ 120 |
| Operating Rig Time | 4 1/2 Hours |
| Max Rec. Temp. F | 120 |
| Equipment Number | 108 |
| Location | Hays |
| Recorded By | J. Long |
| Witnessed By | Chris Leiker |
| | Anthony Steinke |

<<< Fold Here >>>

All interpretations are opinions based on inferences from electrical or other measurements and we cannot and do not guarantee the accuracy or correctness of any interpretation, and we shall not, except in the case of gross or willful negligence on our part, be liable or responsible for any loss, costs, damages, or expenses incurred or sustained by anyone resulting from any interpretation made by any of our officers, agents or employees. These interpretations are also subject to our general terms and conditions set out in our current Price Schedule.

Comments

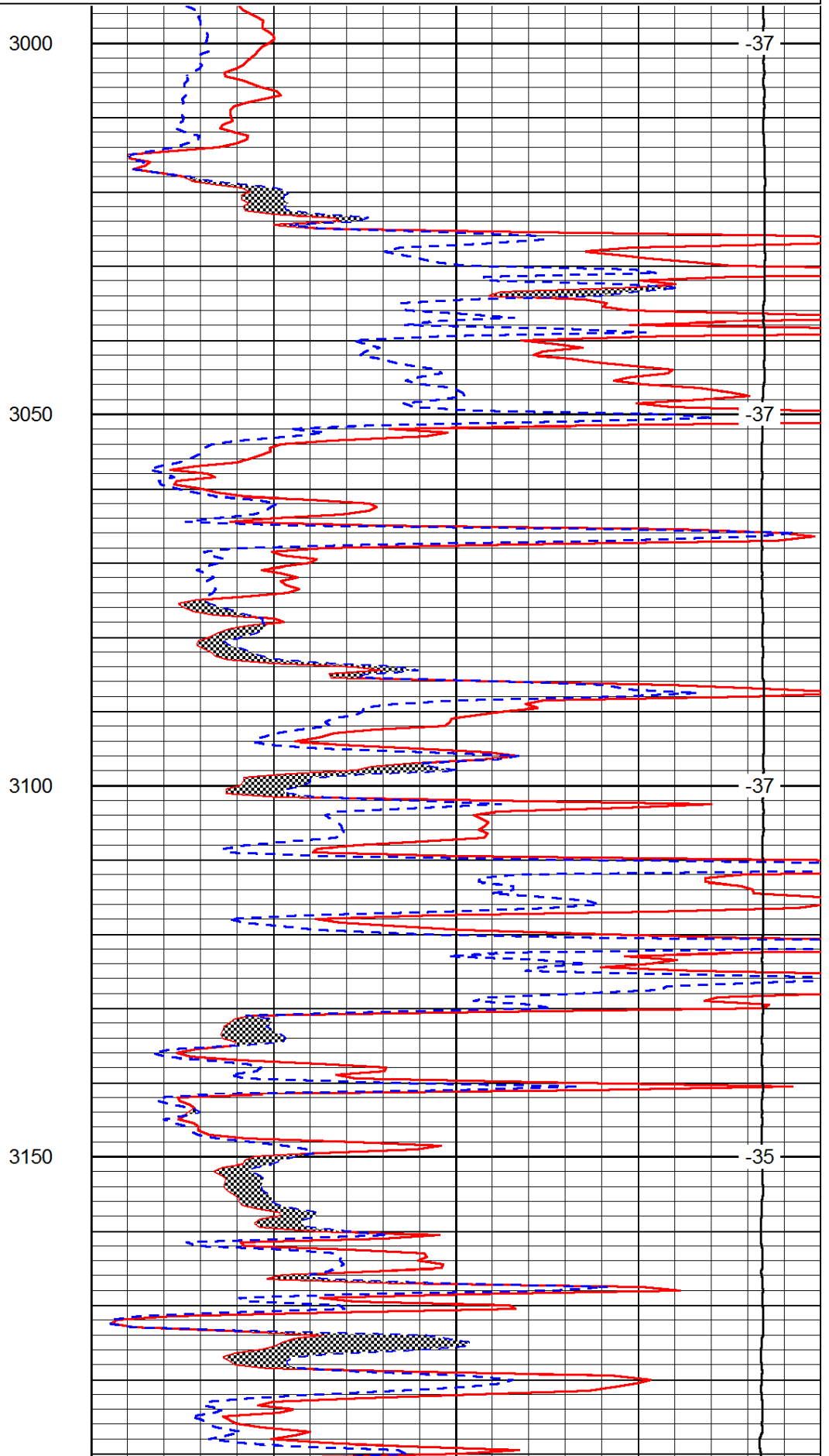
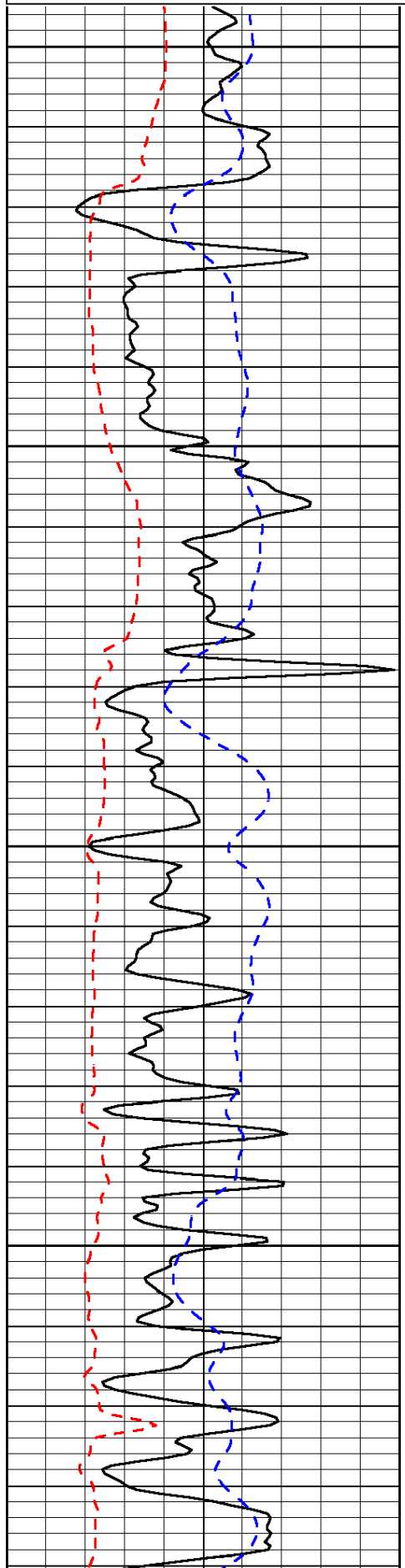
Thank you for using Pioneer Energy Services
www.pioneerres.com
785 625 3858

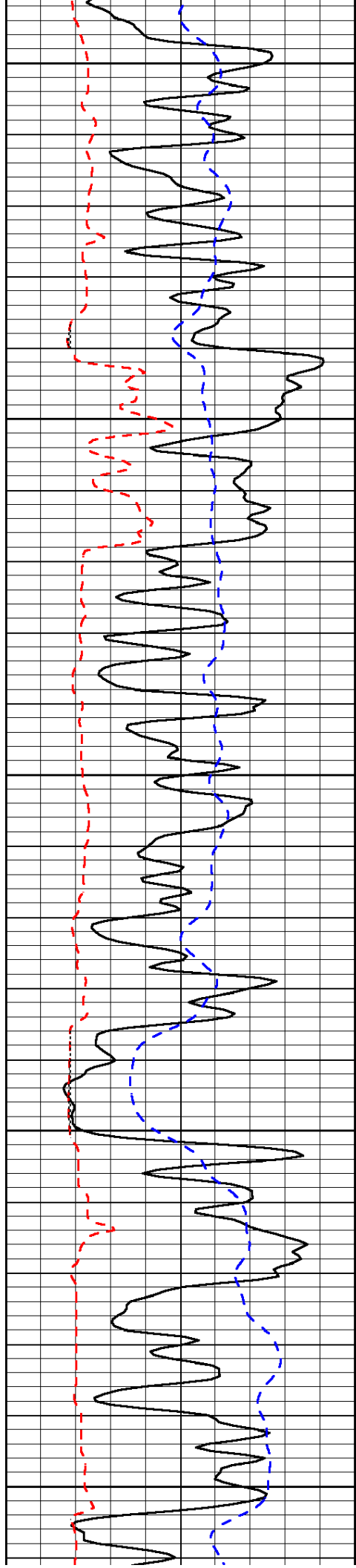
Oakley, South to Jayhawk Road, 1 1/2 South, 1 West, 1 South Into

| | | |
|------|--------------------------|-----|
| 0 | Gamma Ray | 150 |
| 6 | Micro Log Caliper (GAPI) | 16 |
| -200 | SP (mV) | 0 |

| | | |
|-------|---------------------|----|
| 0 | Micro Inverse 1 X 1 | 40 |
| 0 | Micro Normal 2" | 40 |
| 15000 | Line Weight | 0 |

LSPD





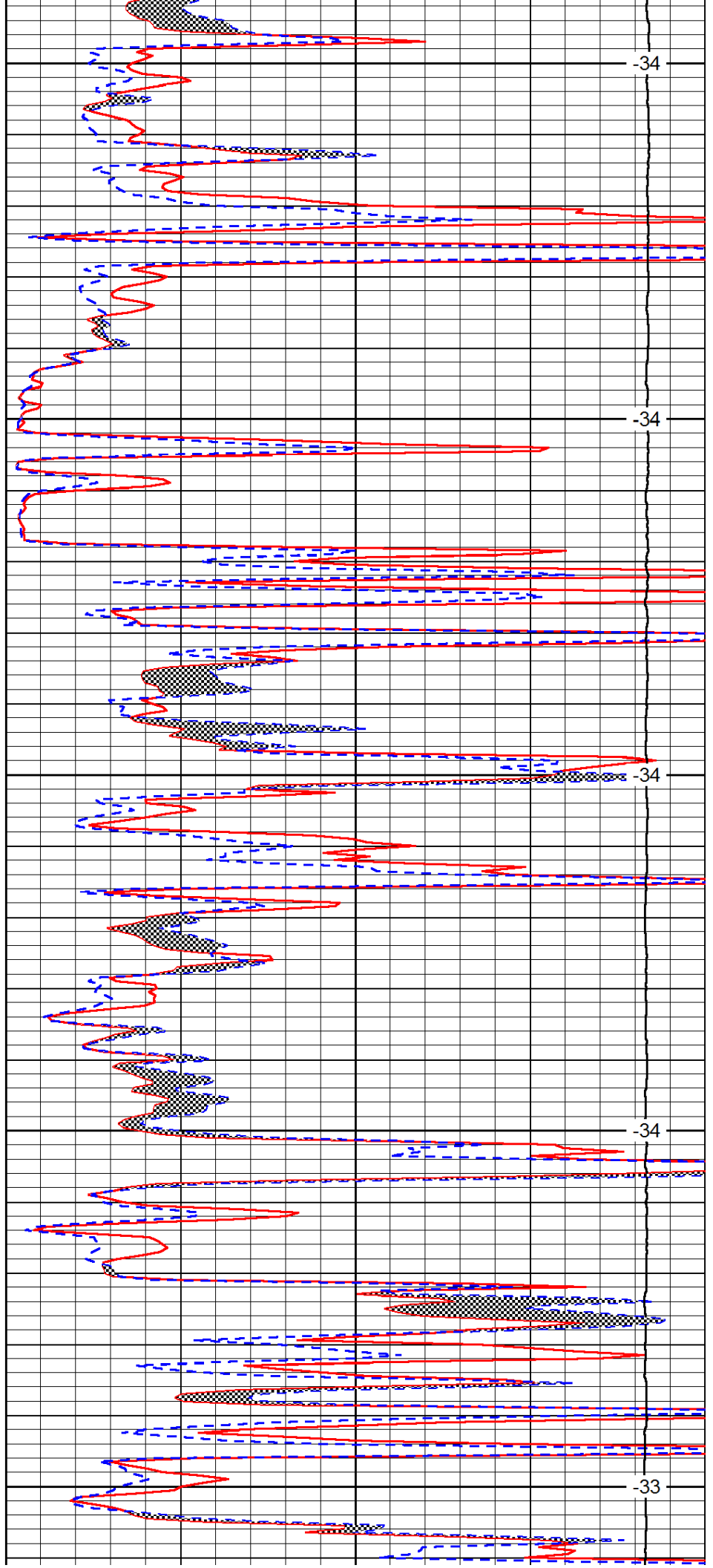
3200

3250

3300

3350

3400



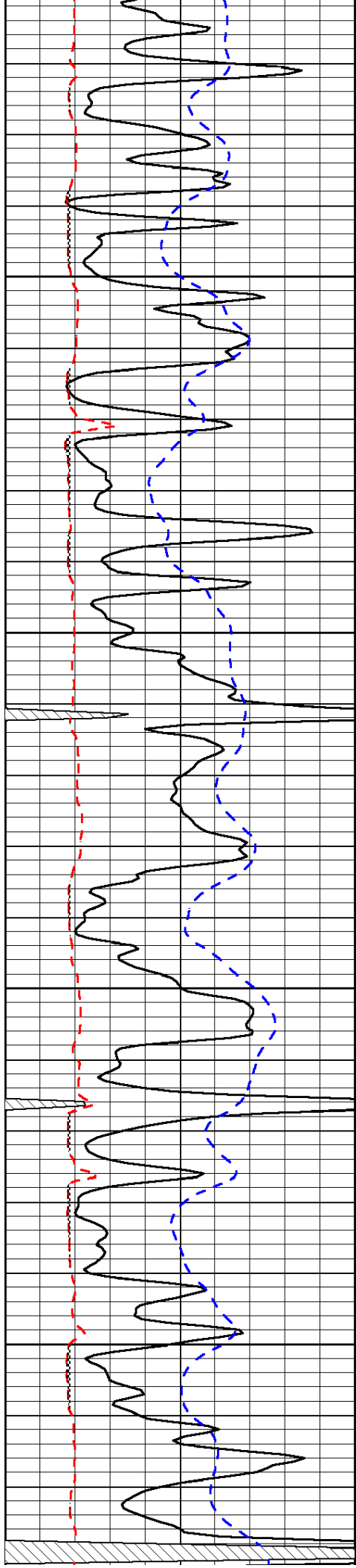
-34

-34

-34

-34

-33

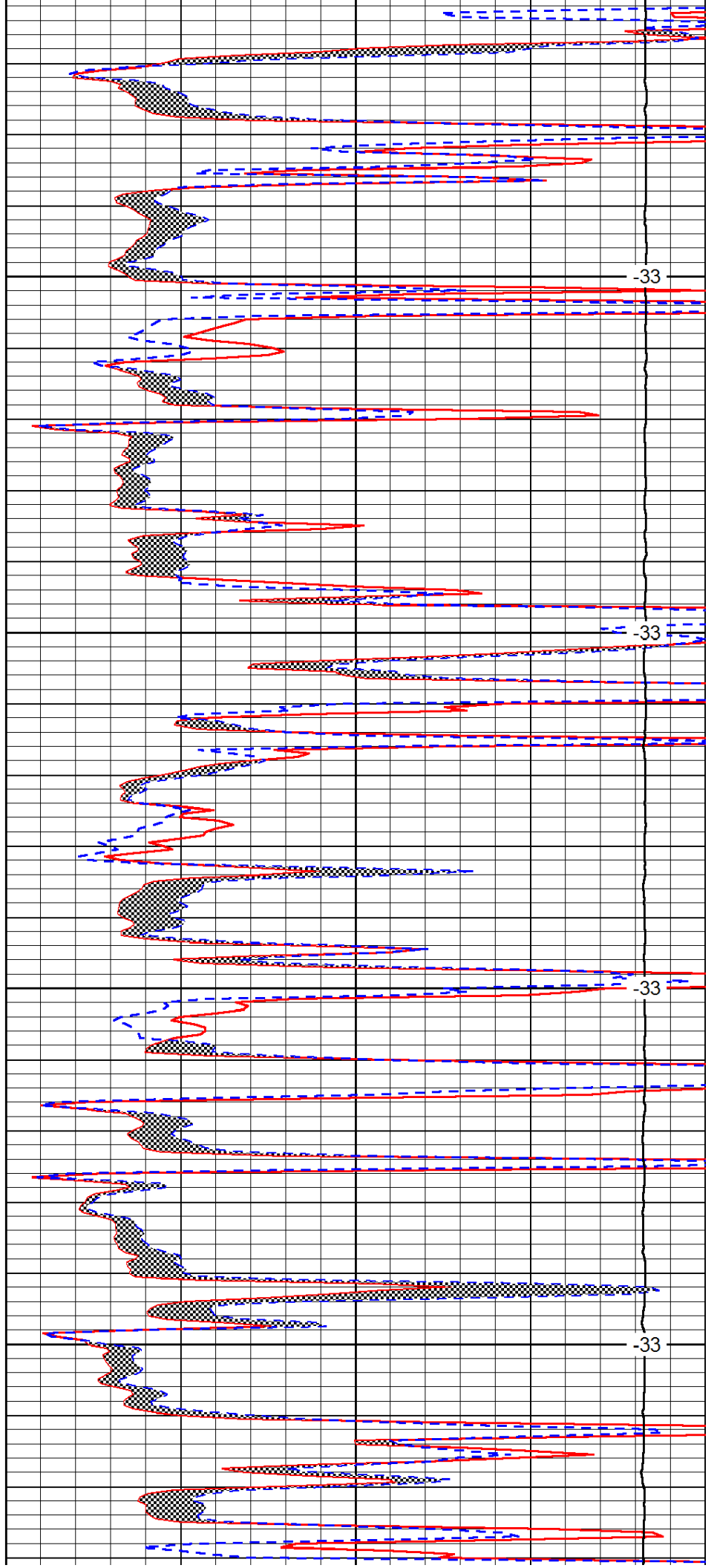


3450

3500

3550

3600

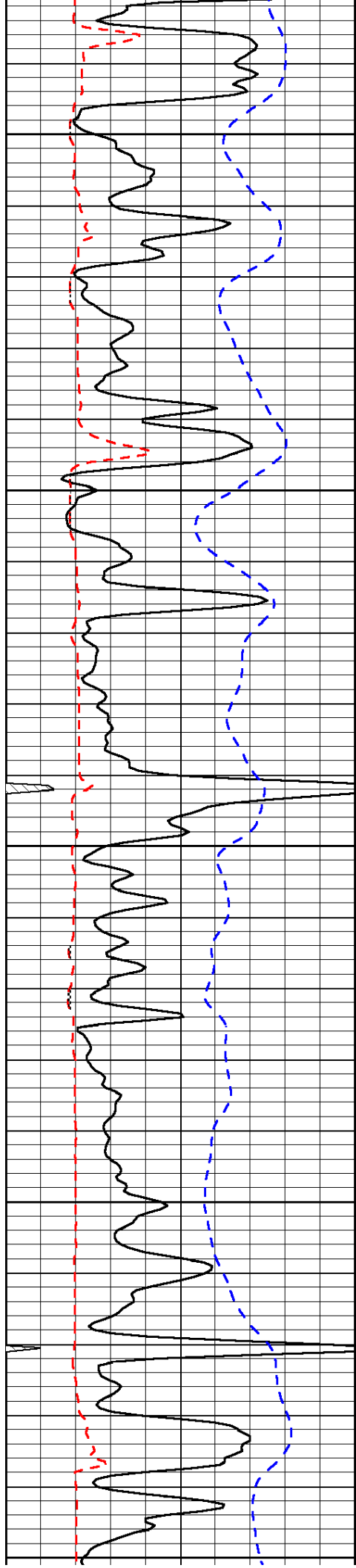


-33

-33

-33

-33



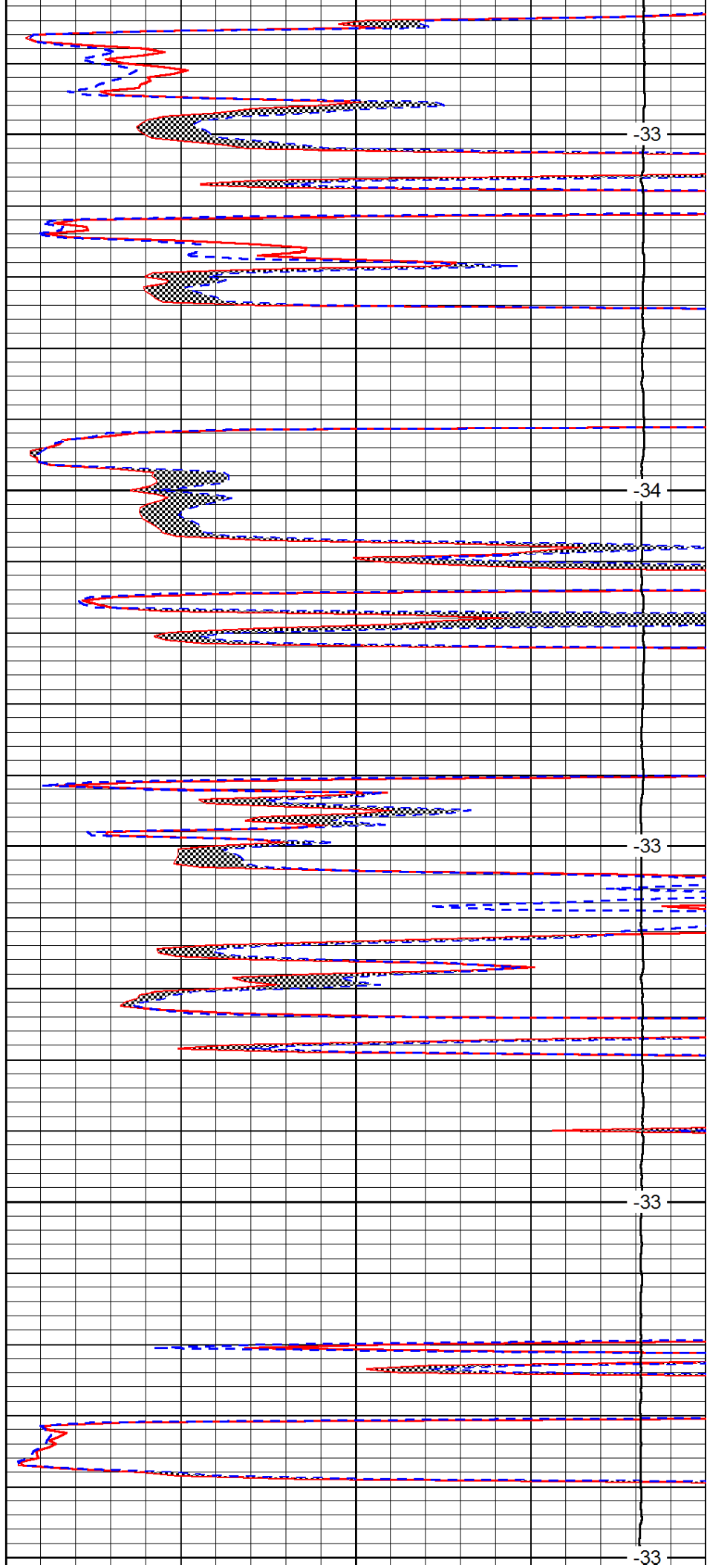
3650

3700

3750

3800

3850



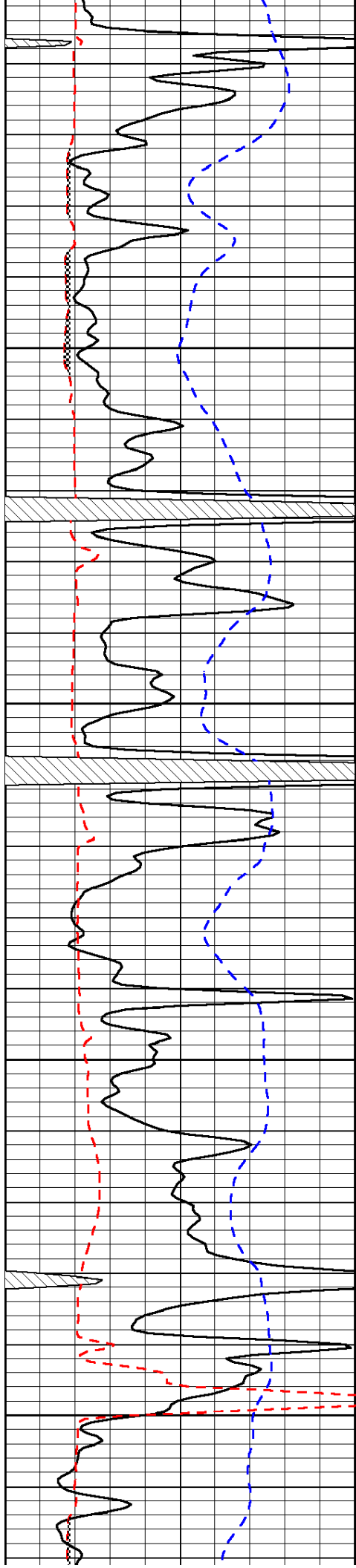
-33

-34

-33

-33

-33

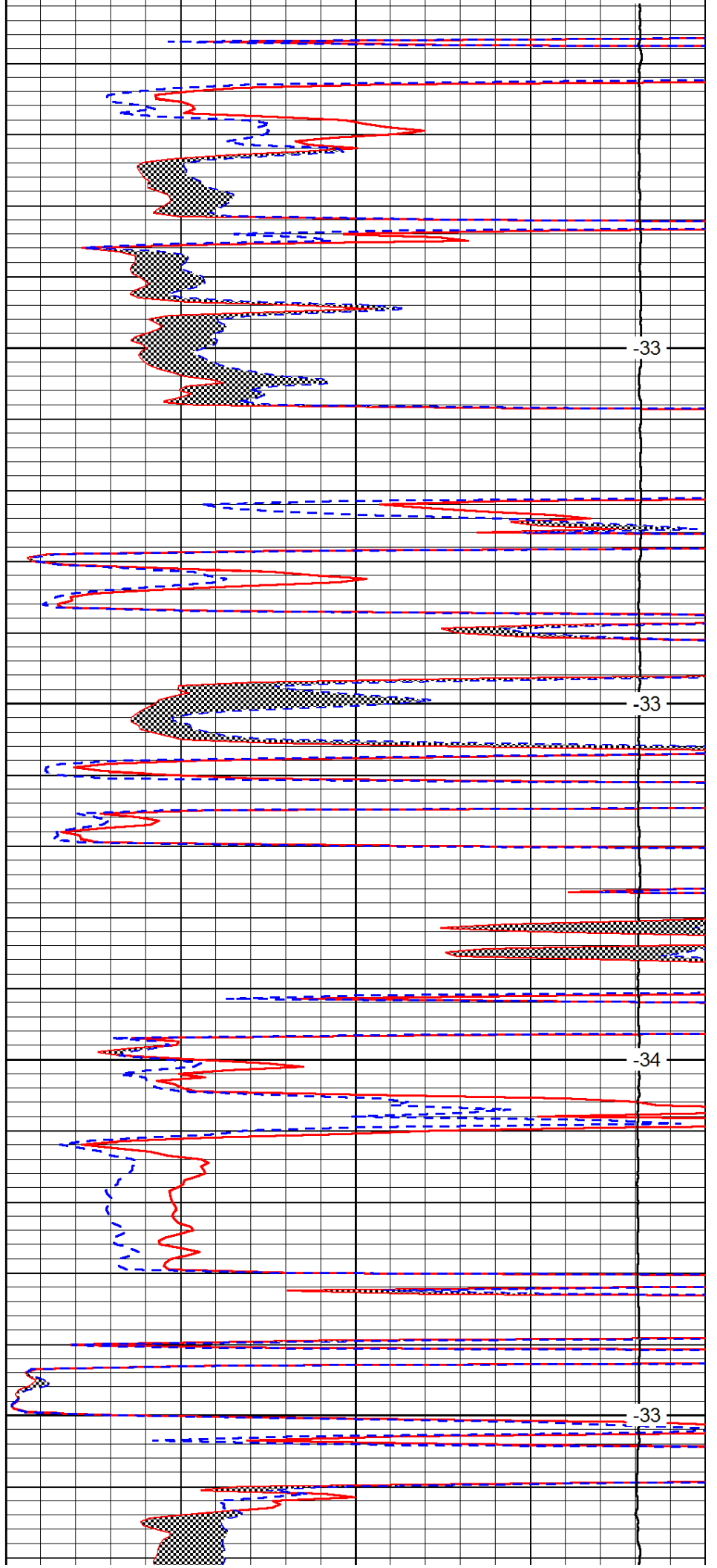


3900

3950

4000

4050

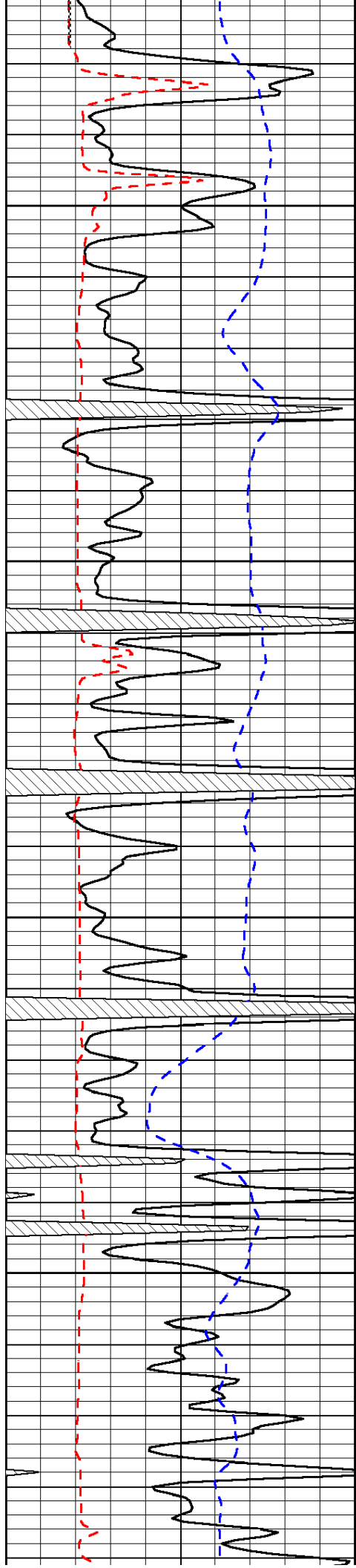


-33

-33

-34

-33

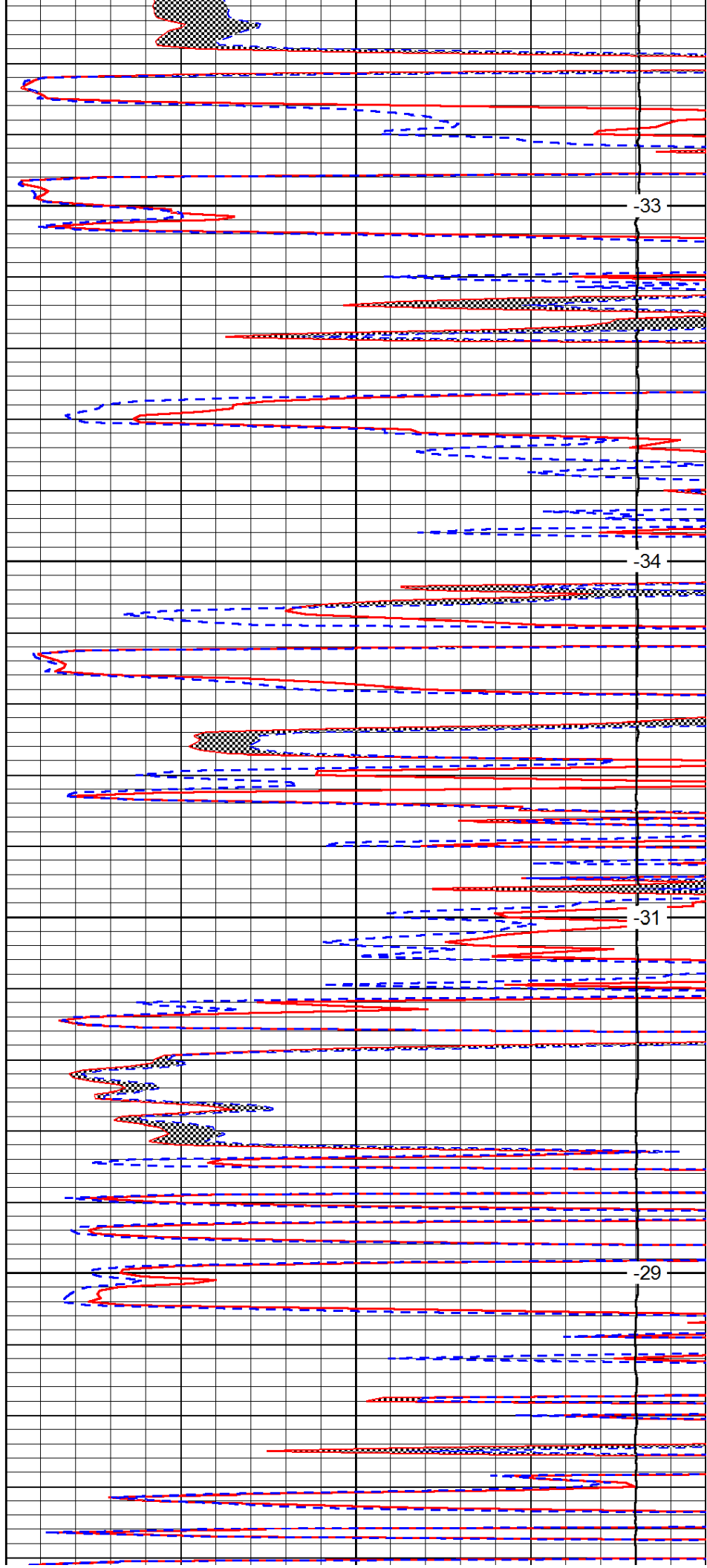


4100

4150

4200

4250

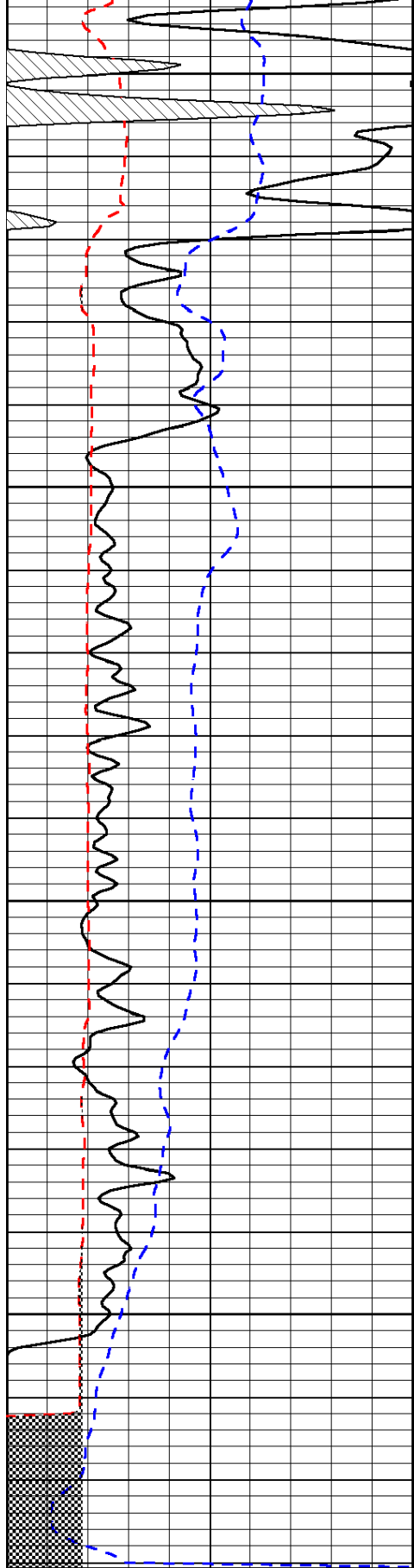


-33

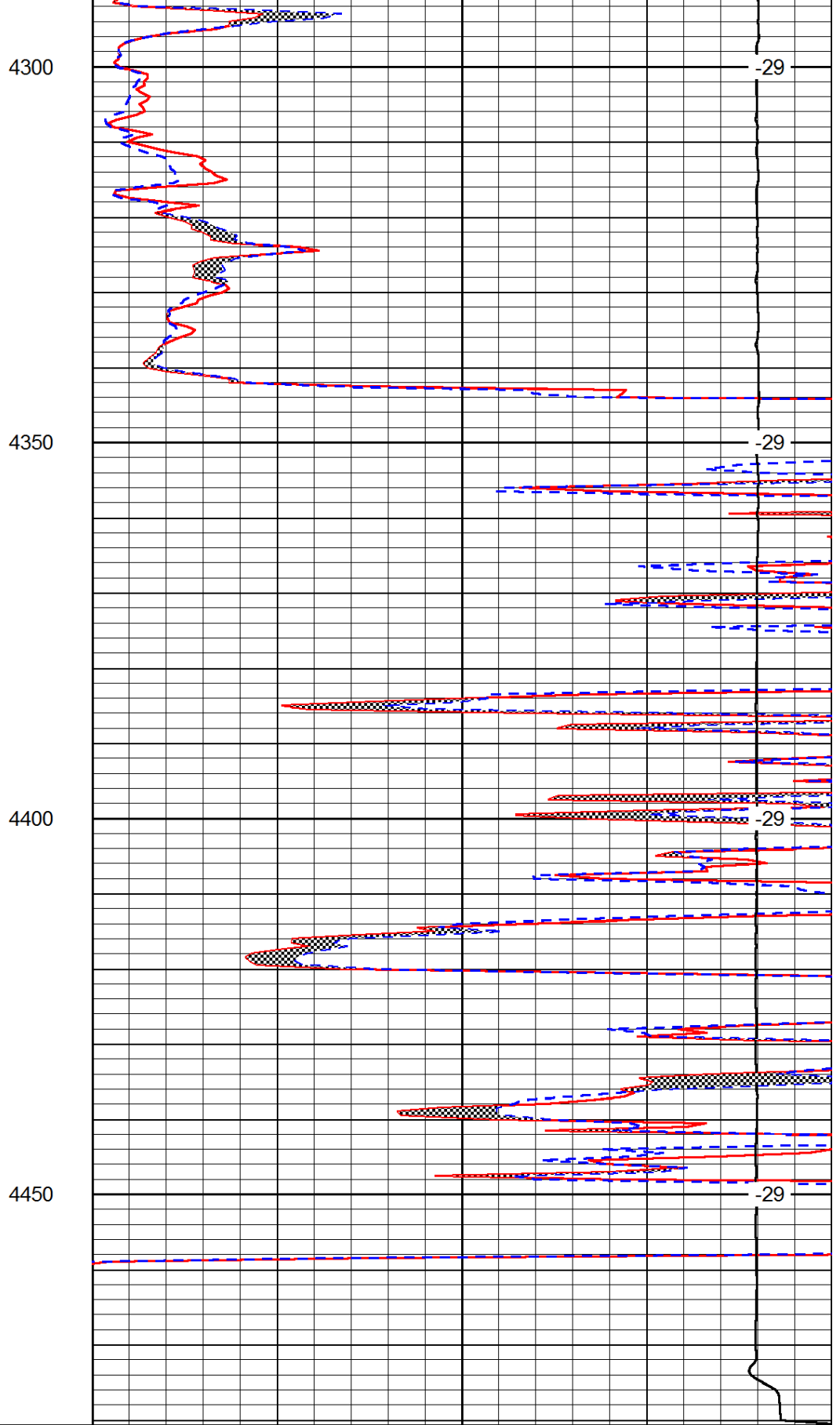
-34

-31

-29



| | | |
|------|--------------------------|-----|
| 0 | Gamma Ray | 150 |
| 6 | Micro Log Caliper (GAPI) | 16 |
| -200 | SP (mV) | 0 |



| | | |
|-------|---------------------|----|
| 0 | Micro Inverse 1 X 1 | 40 |
| 0 | Micro Normal 2'' | 40 |
| 15000 | Line Weight | 0 |

LSPD