



Pioneer Energy Services

# Borehole Compensated Sonic Log

15-109-21,266-00-00

API No. 15-109-21,266-00-00

Company **Black Tea Oil, LLC**  
 Well **Krebs V # 1**  
 Field **Bridges**  
 County **Logan** State **Kansas**

Location **2,970' FSL & 813' FEL**

Sec: **33** Twp: **14S** Rge: **32W**

Other Services  
CNL/CDL  
MEL/DIL

Elevation  
K.B. 2677  
D.F. 2669  
G.L. 2669

Date	4/3/2014
Run Number	Two
Type Log	BHC Sonic
Depth Driller	4440
Depth Logger	4475
Bottom Logged Interval	4464
Top Logged Interval	250
Type Fluid In Hole	Chemical
Salinity, PPM CL	7000
Density Level	8.9
Level	Full
Max. Rec. Temp. F	120
Operating Rig Time	4 1/2 Hours
Equipment -- Location	108 Hays
Recorded By	J. Long
Witnessed By	Chris Leiker

Borehole Record		Casing Record	
Run No.	Bit From To	Size	Wgt. From To
1	12.25 00	8.625	24# 00
2	7.875 263	4440	263

<<< Fold Here >>>

All interpretations are opinions based on inferences from electrical or other measurements and we cannot and do not guarantee the accuracy or correctness of any interpretation, and we shall not, except in the case of gross or willful negligence on our part, be liable or responsible for any loss, costs, damages, or expenses incurred or sustained by anyone resulting from any interpretation made by any of our officers, agents or employees. These interpretations are also subject to our general terms and conditions set out in our current Price Schedule.

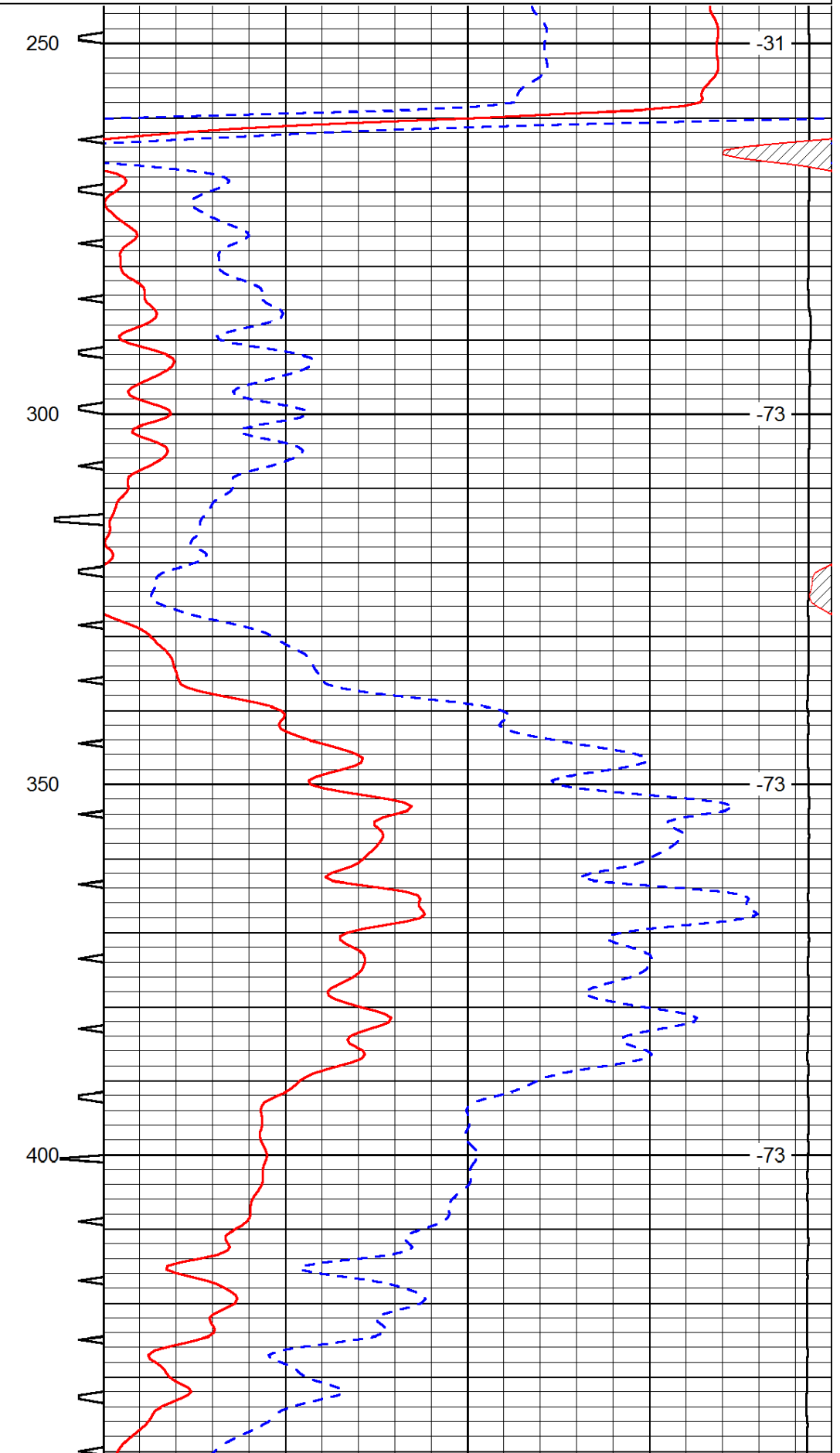
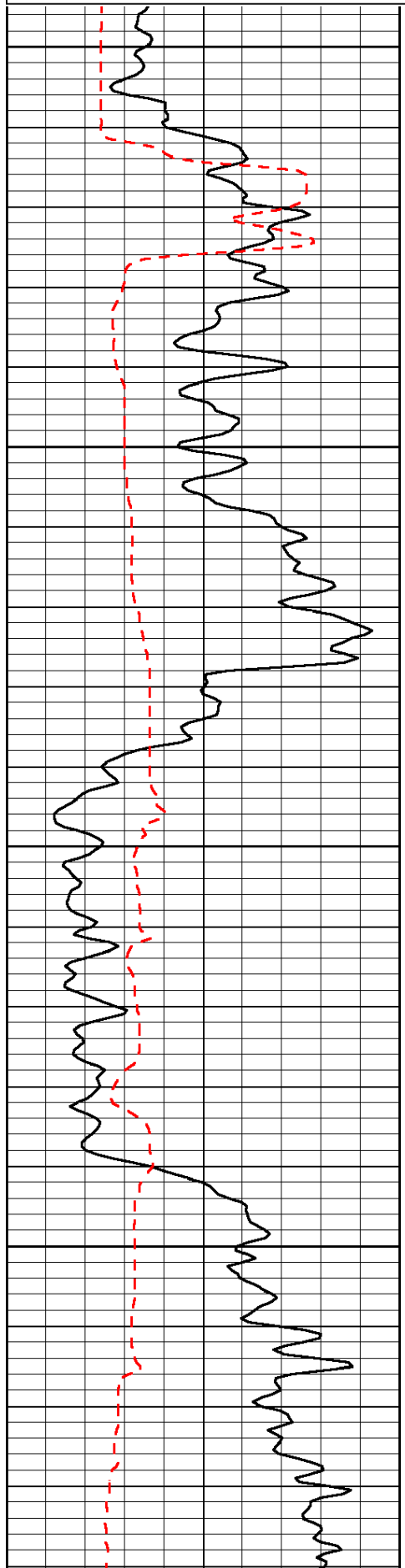
Comments

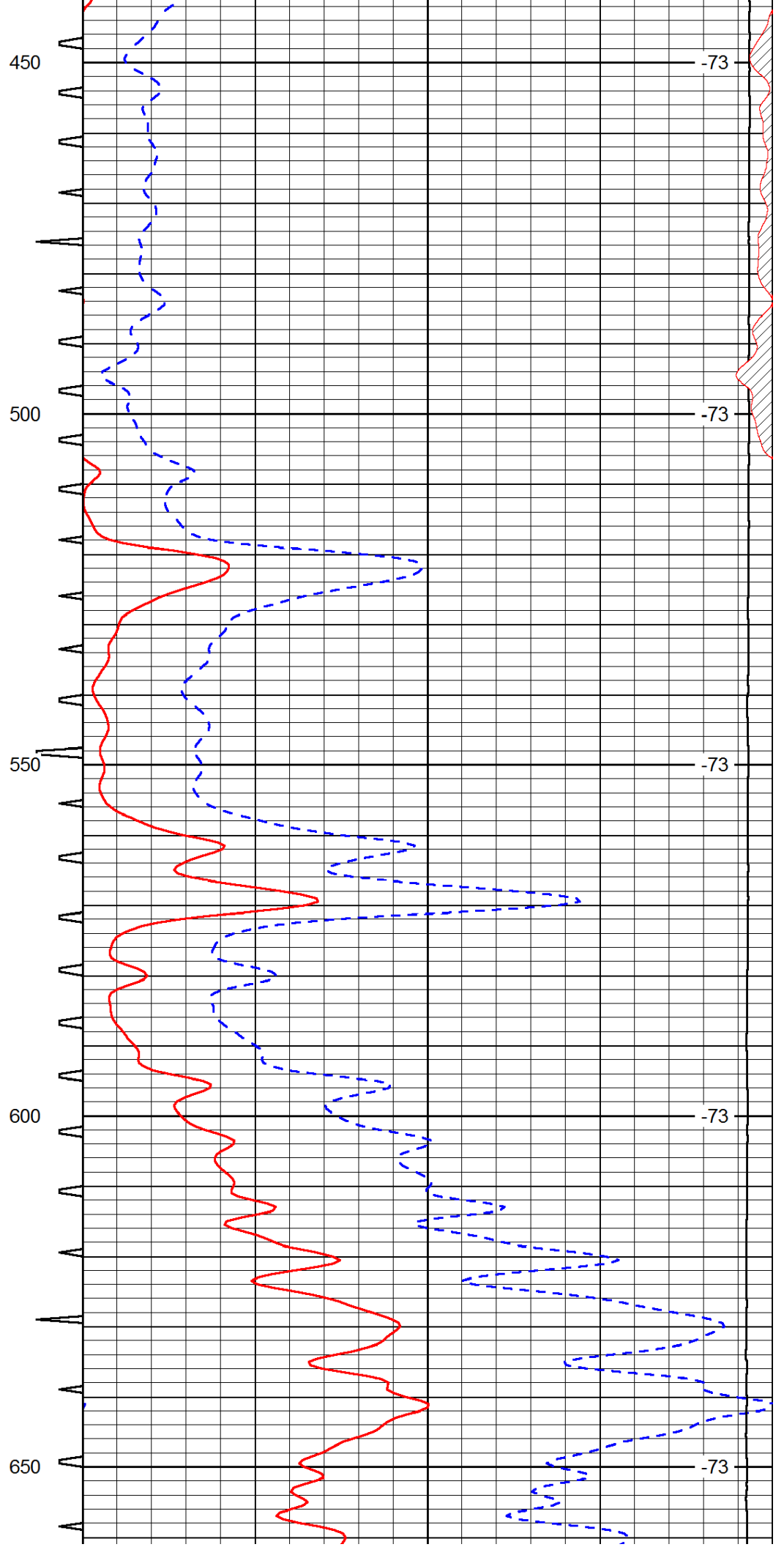
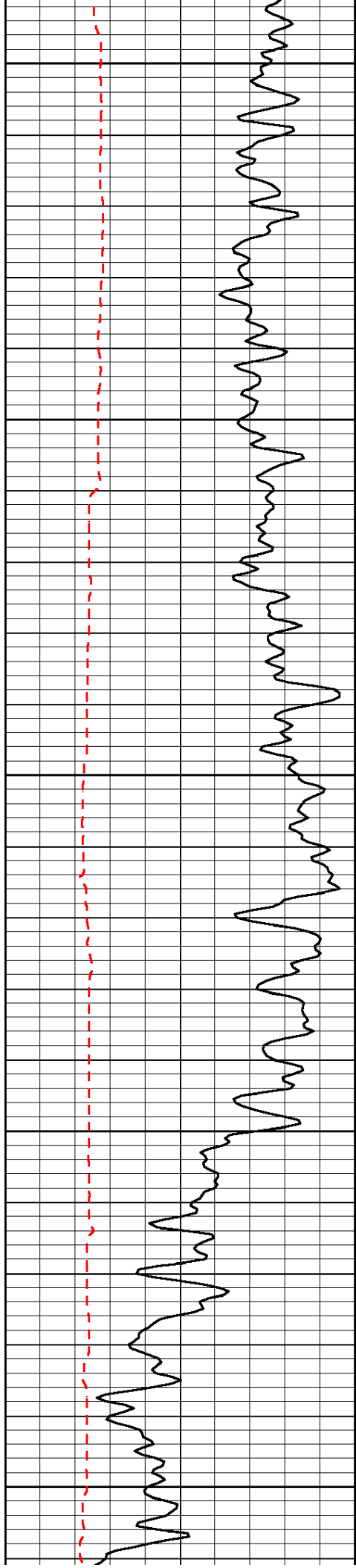
Thank you for using Pioneer Energy Services  
 www.pioneerenergy.com  
 785 625 3858

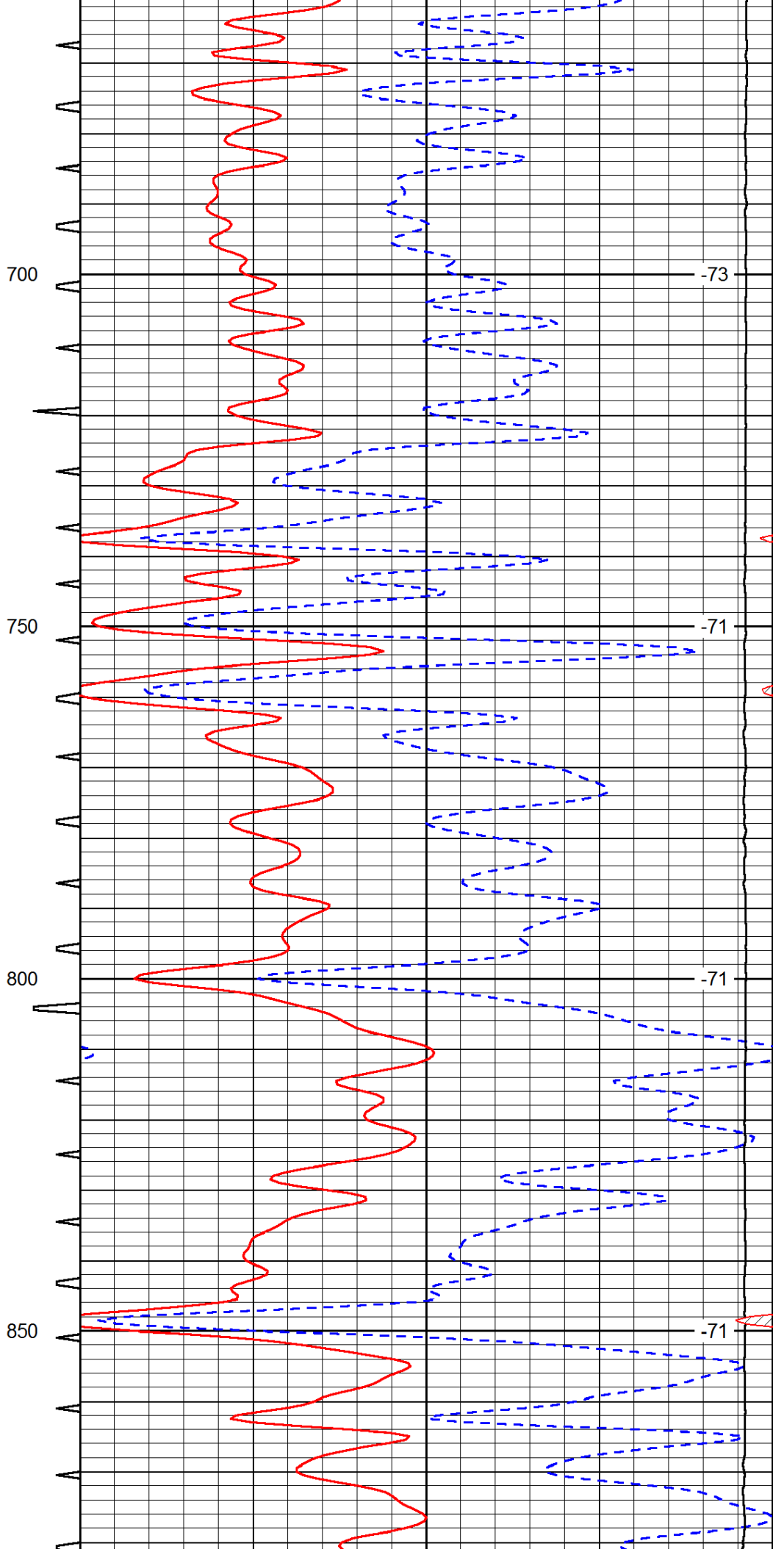
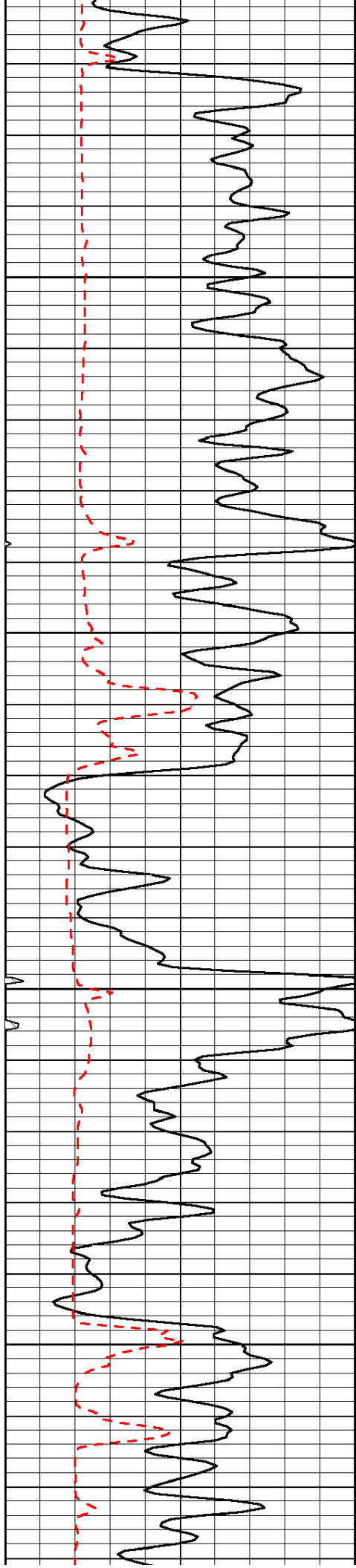
Oakley, South to Jayhawk Road, 1 1/2 South, 1 West, 1 South Into

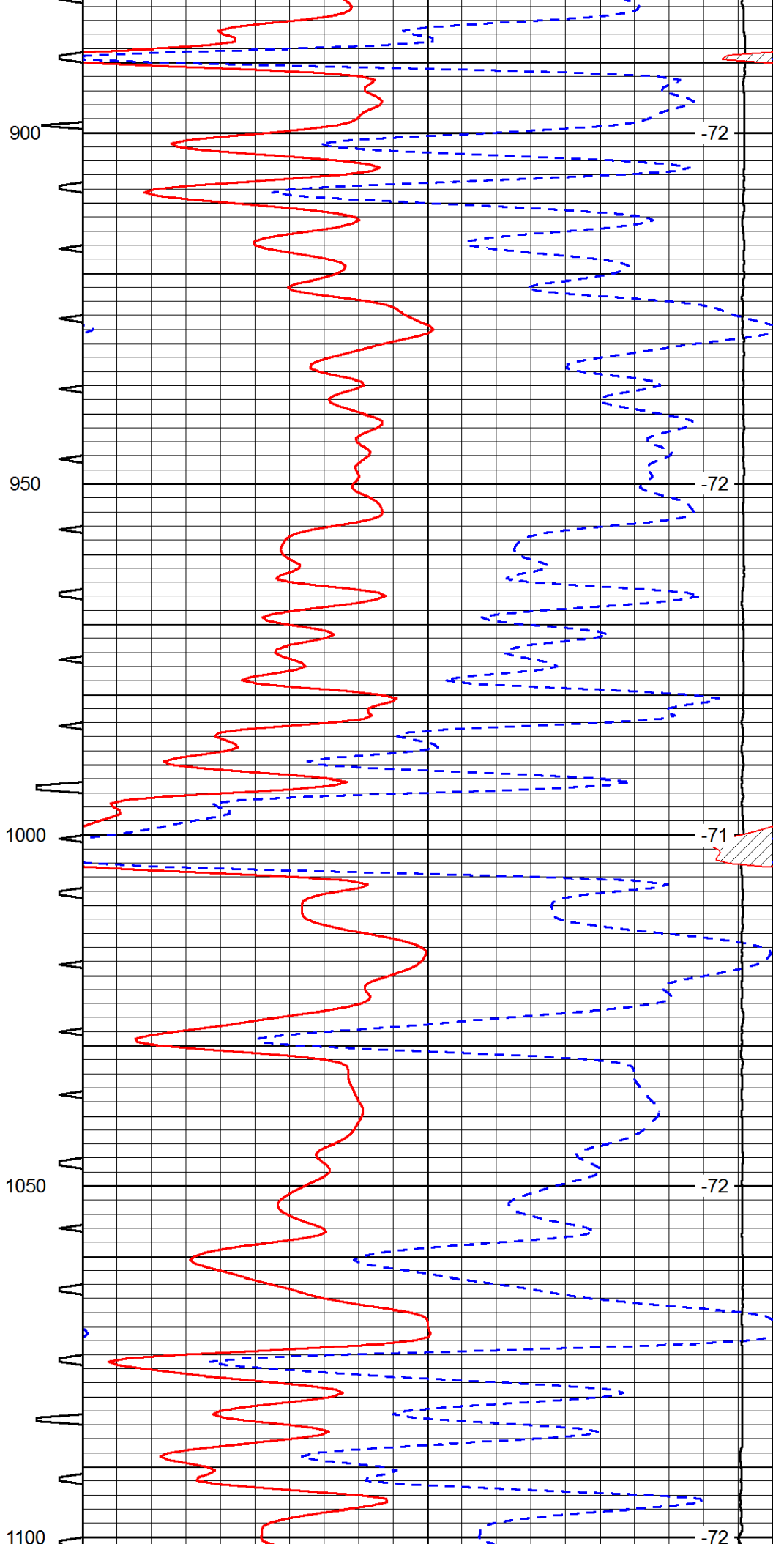
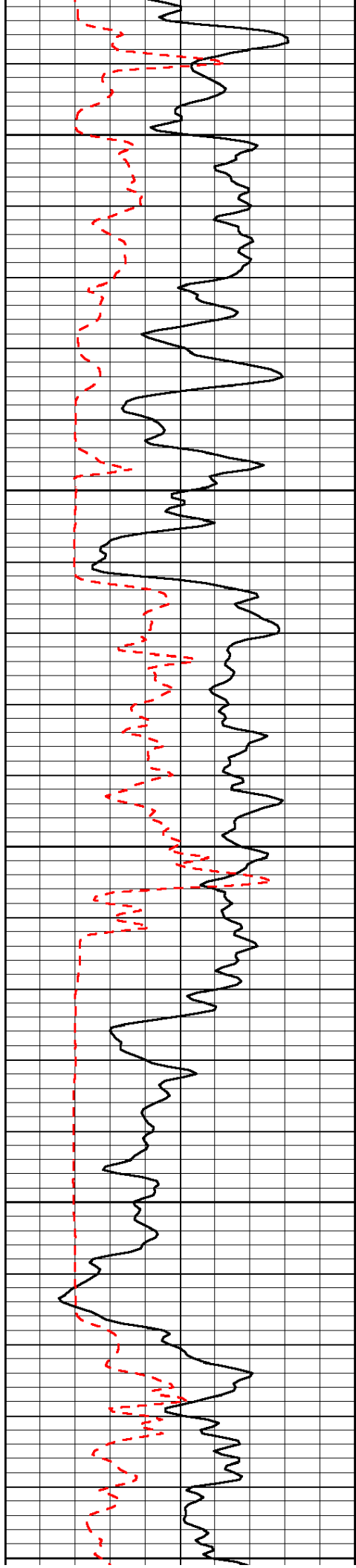
0	Gamma Ray	150	Sonic Int	140	Delta Time (usec/ft)	40
150	Gamma Ray	300	5	0	SPOR	-10
6	Caliper (GAPI)	16		15000	LTEN (lb)	0

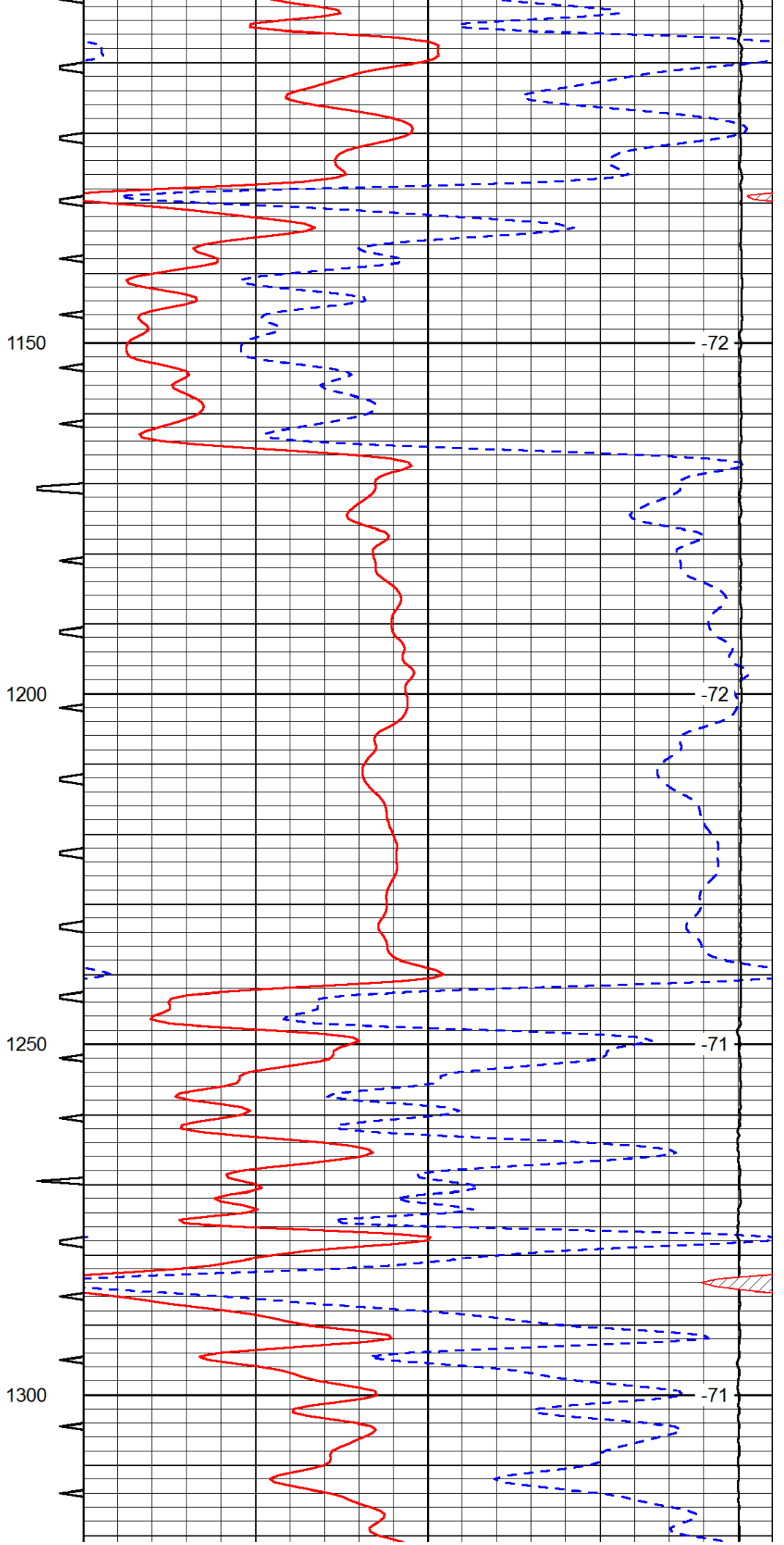
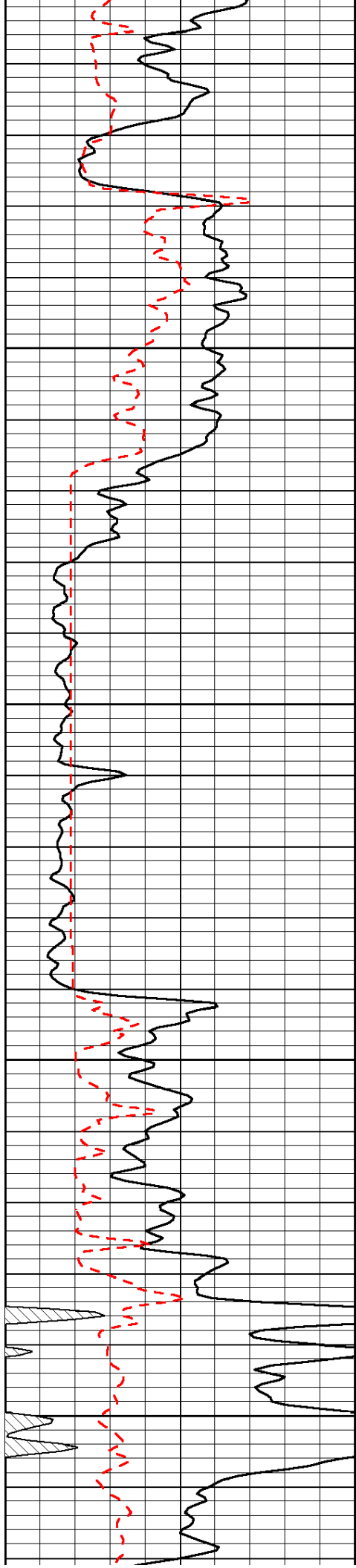
LSPD

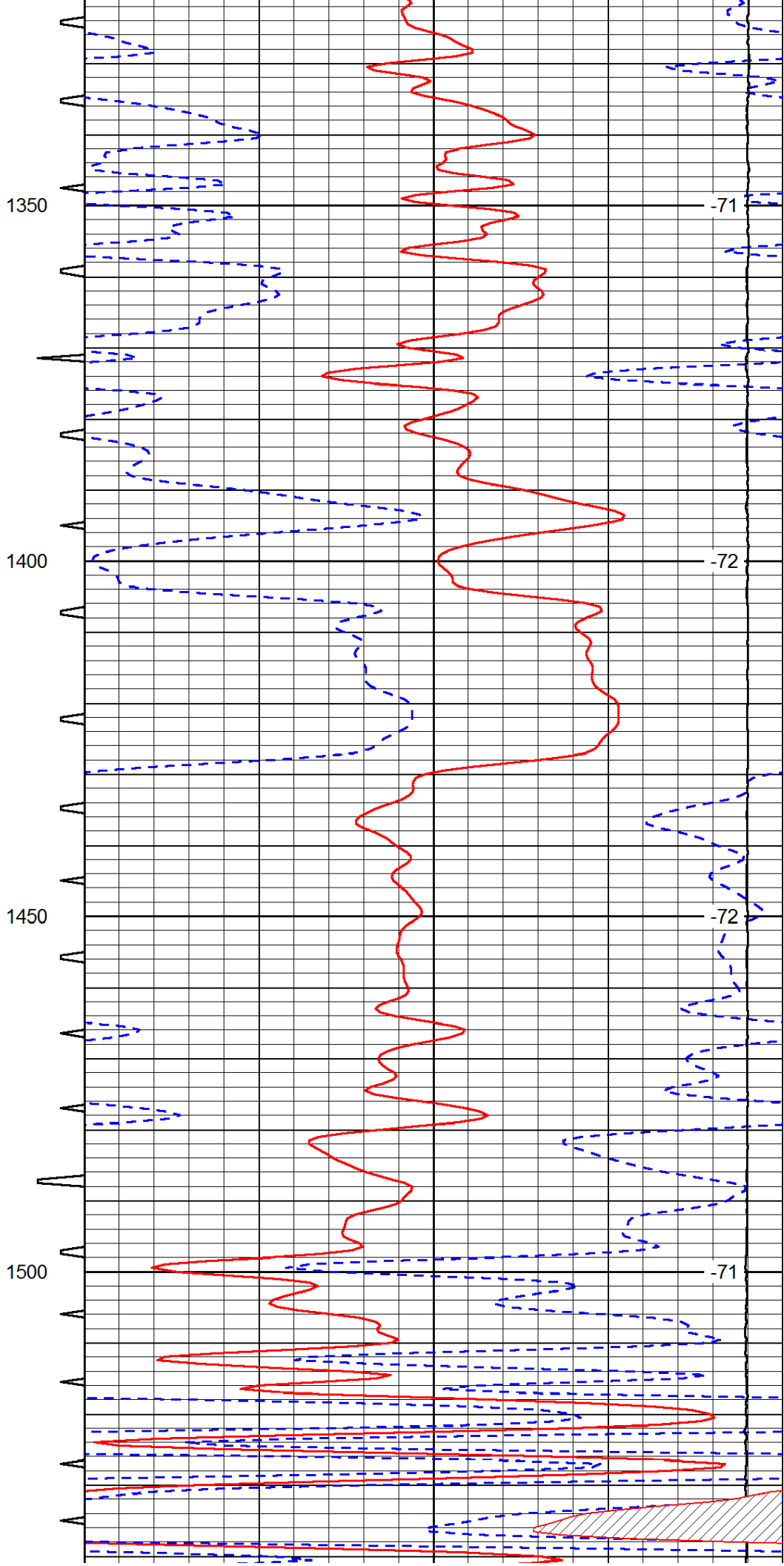
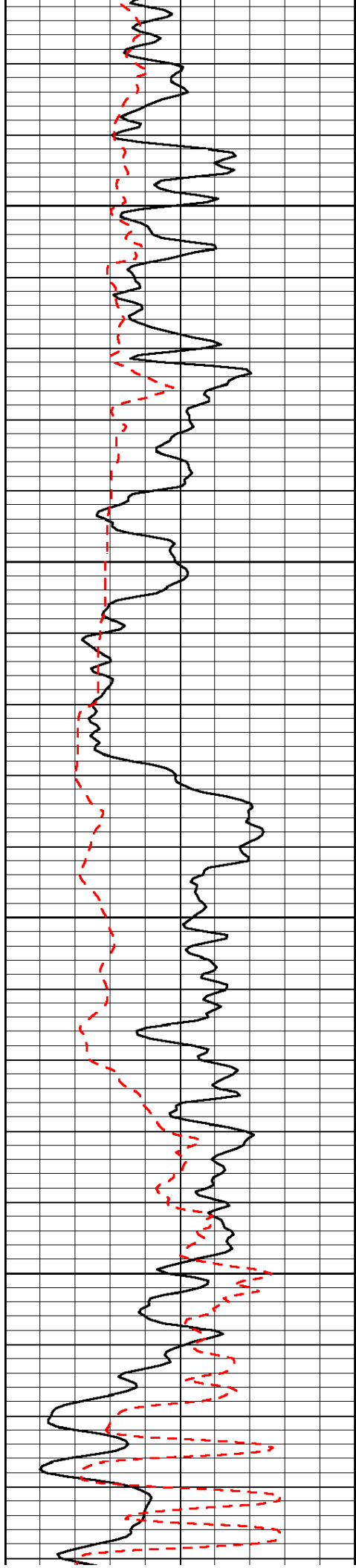


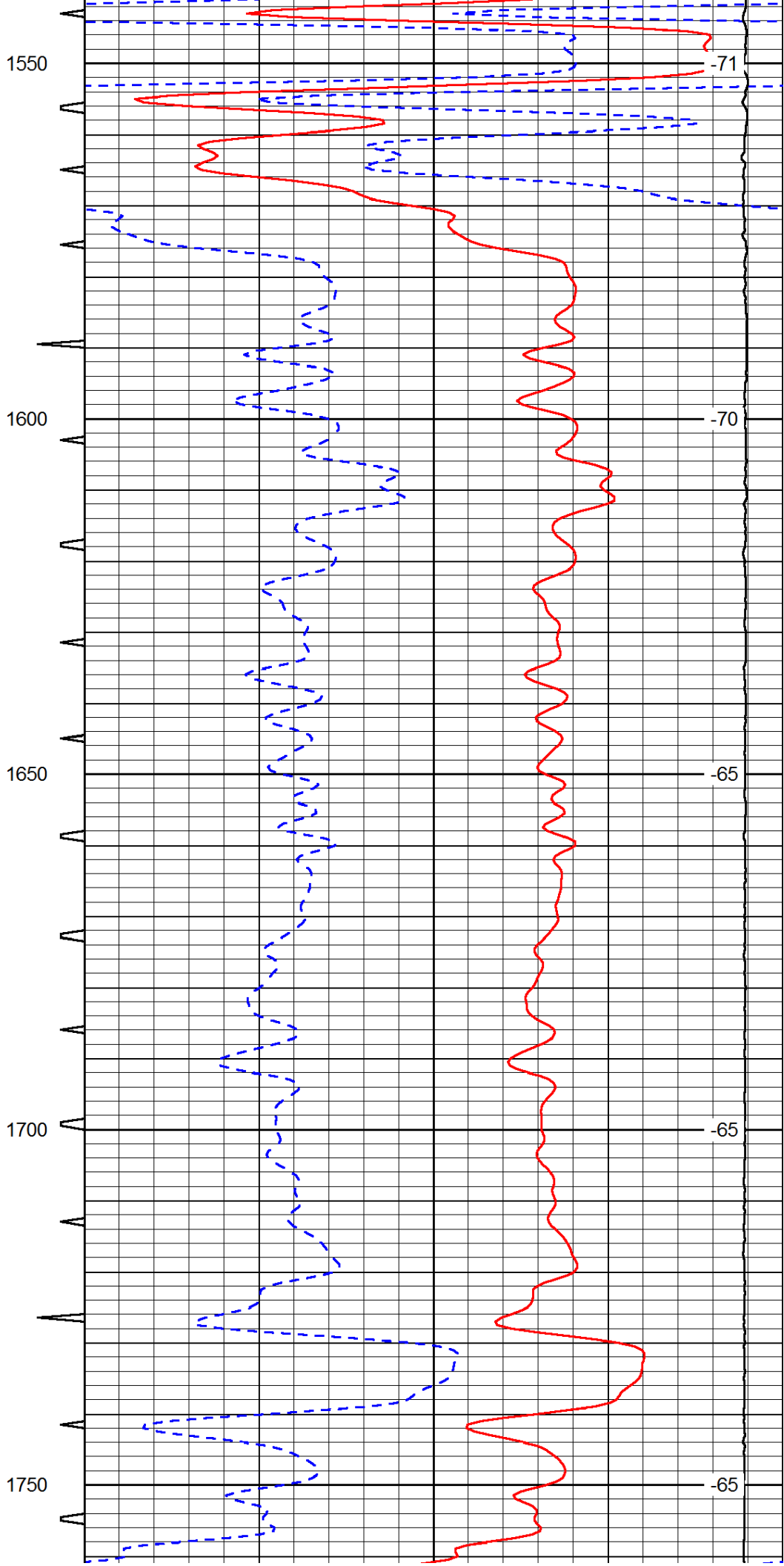
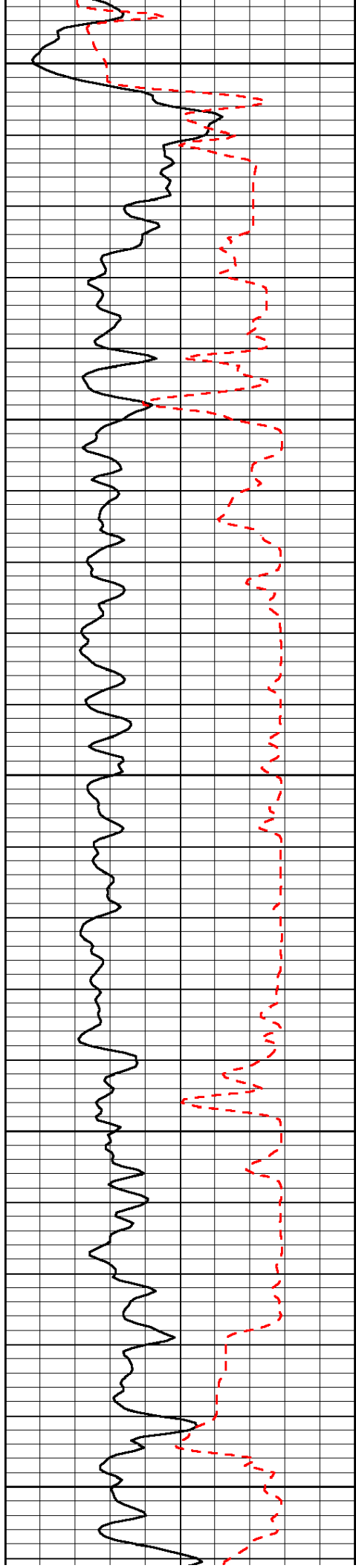




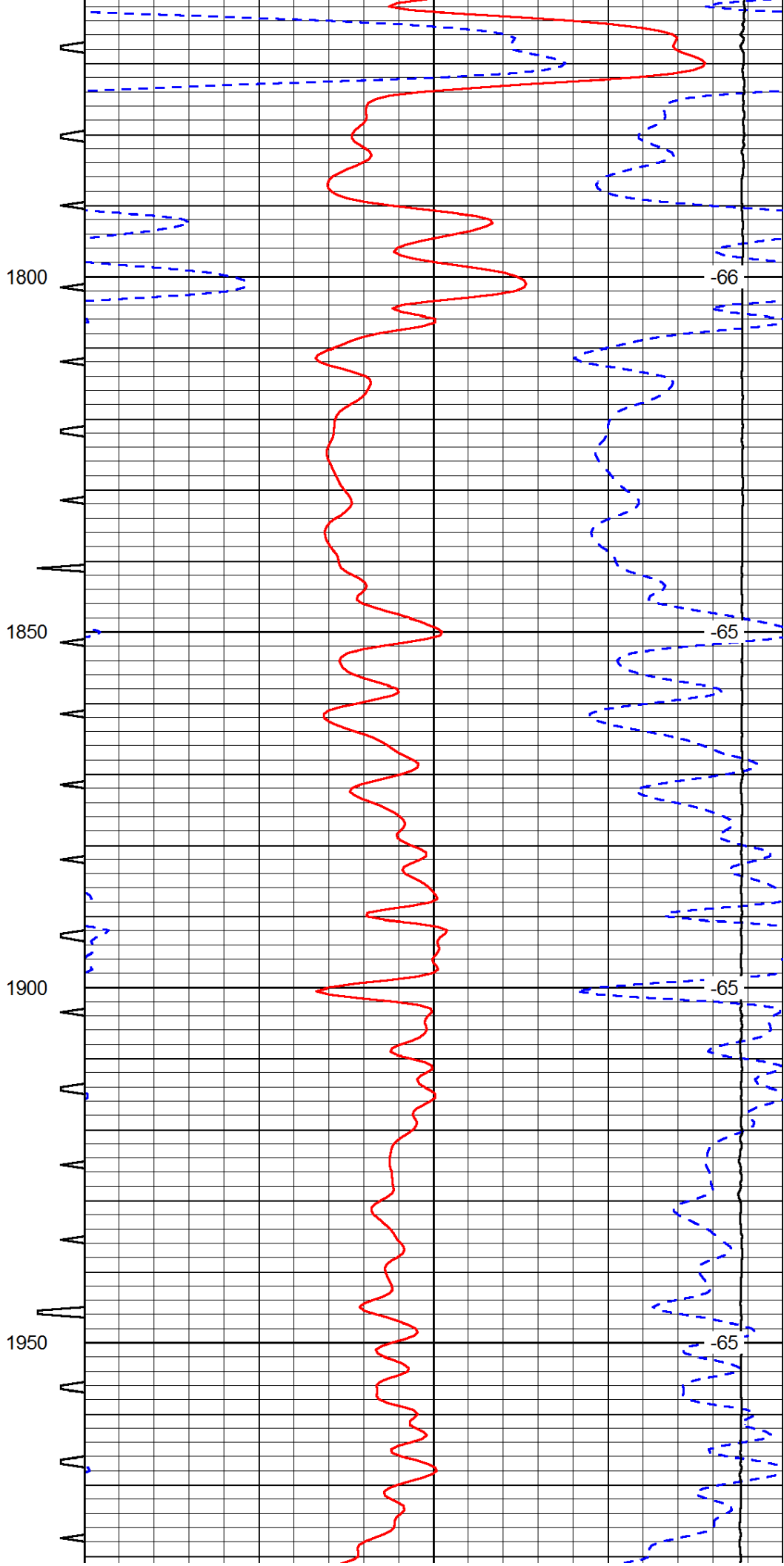
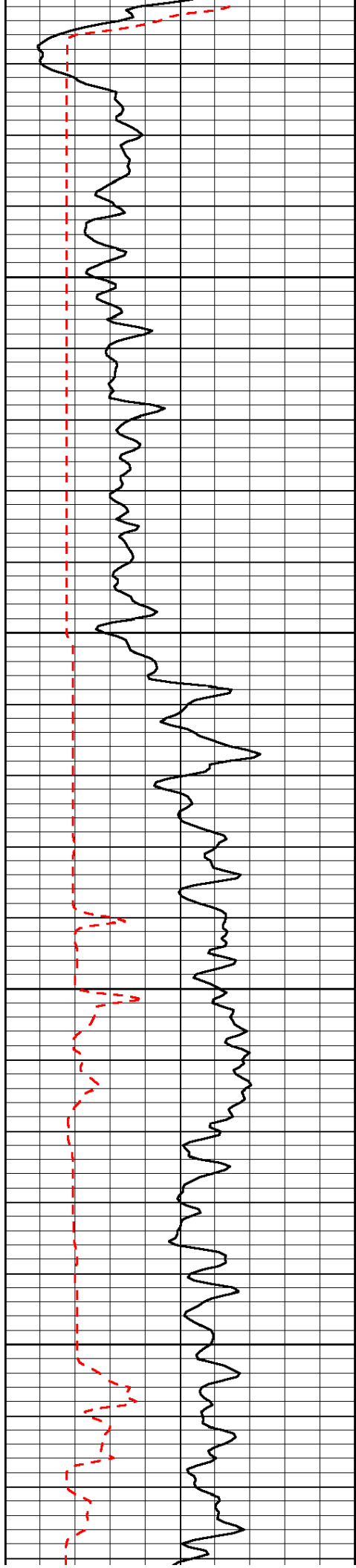


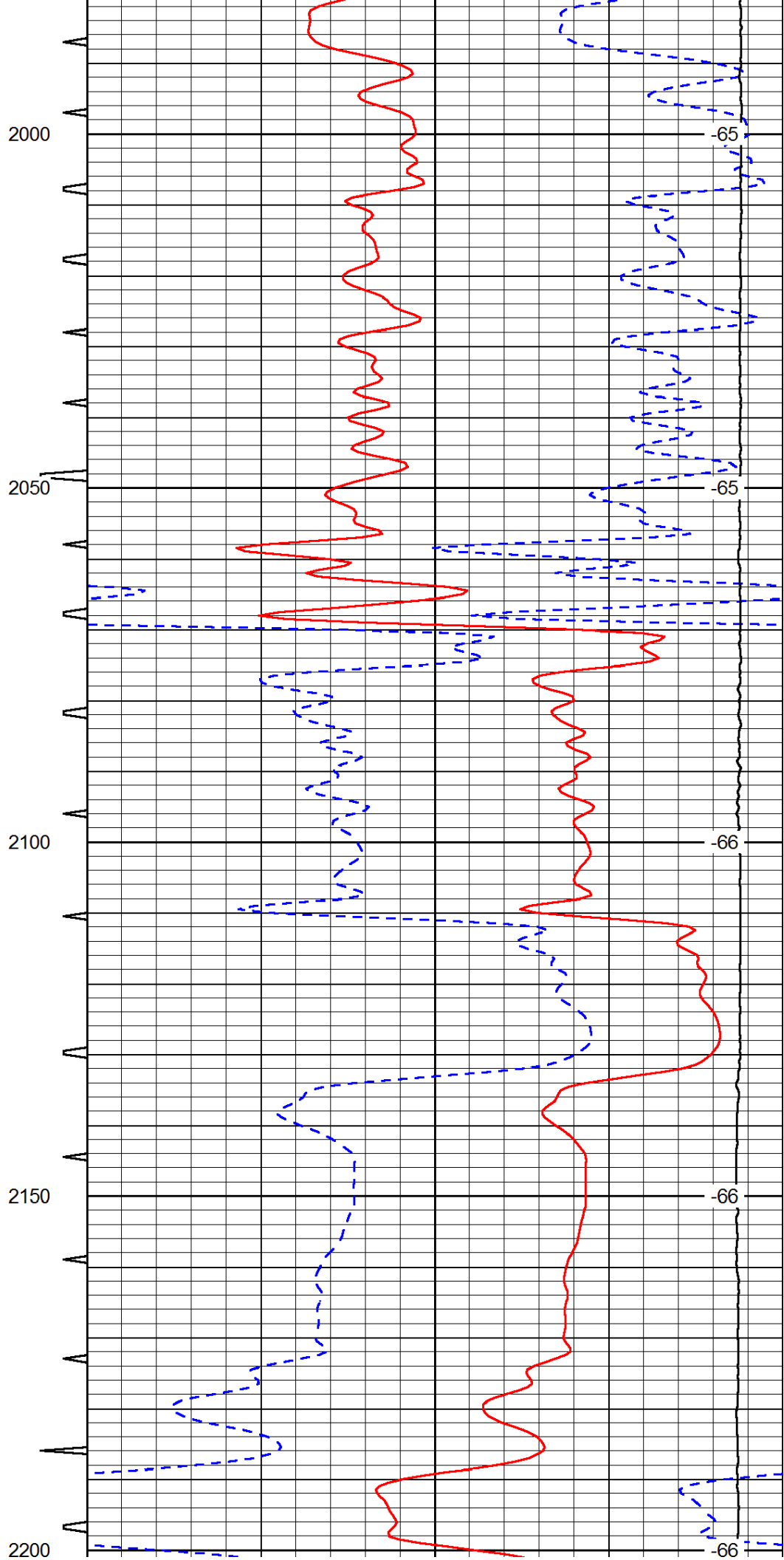
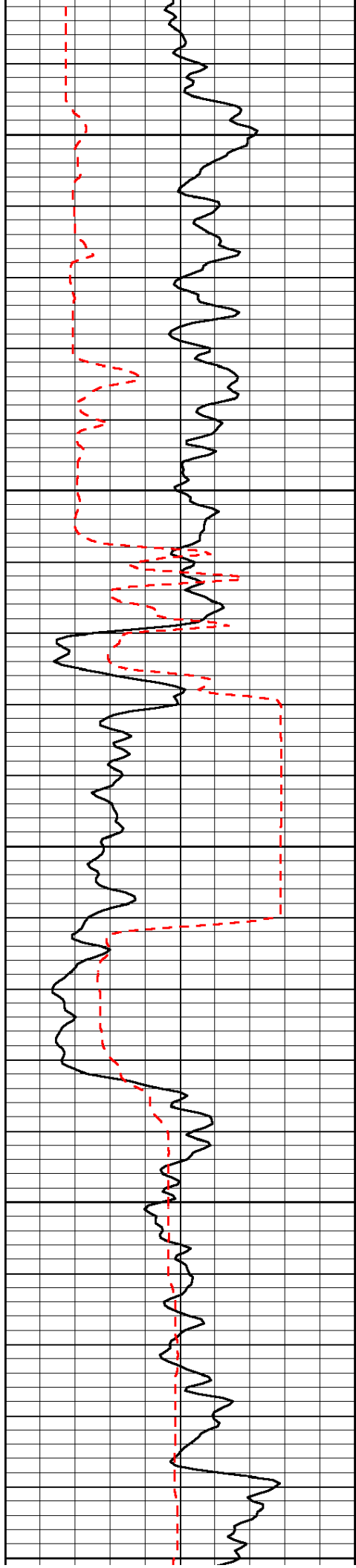


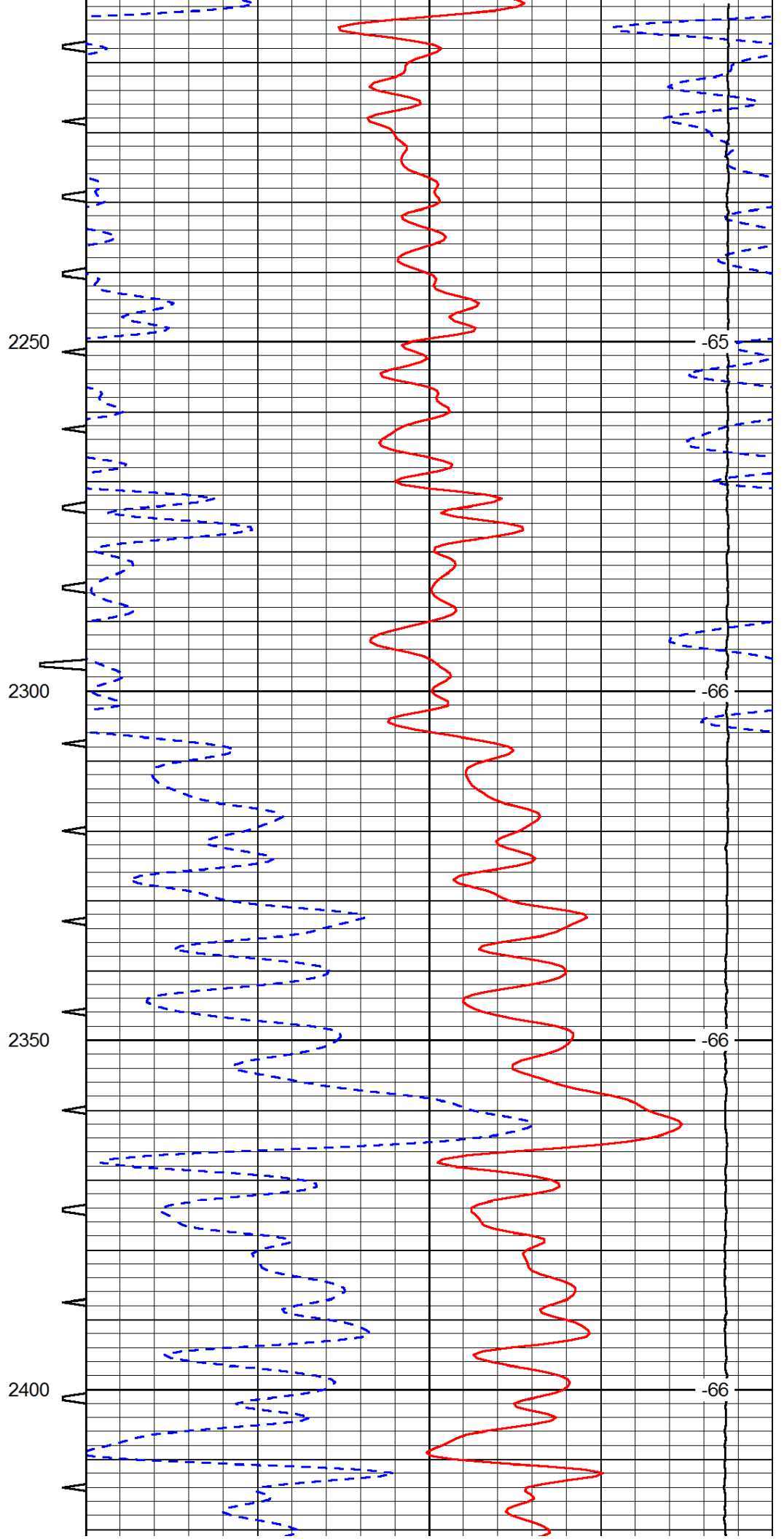
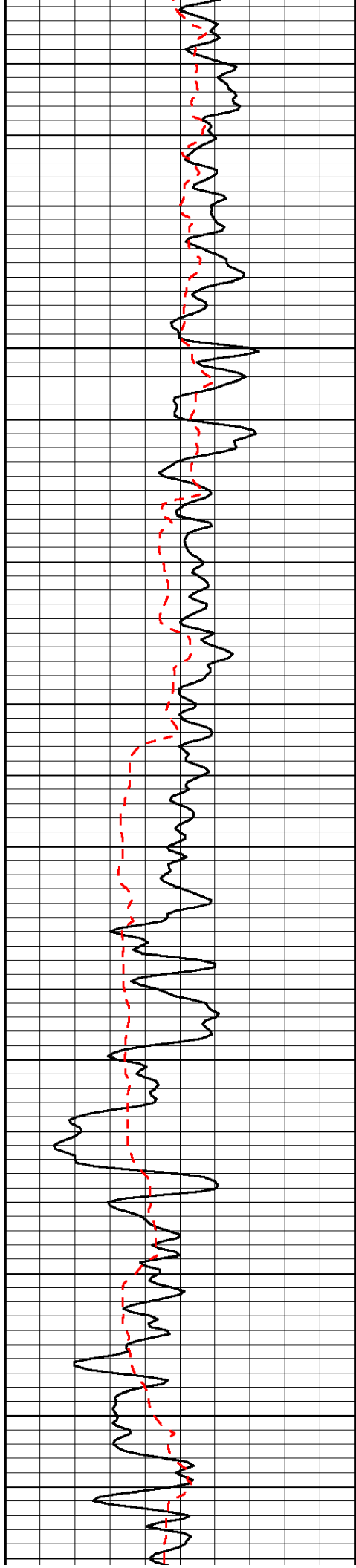


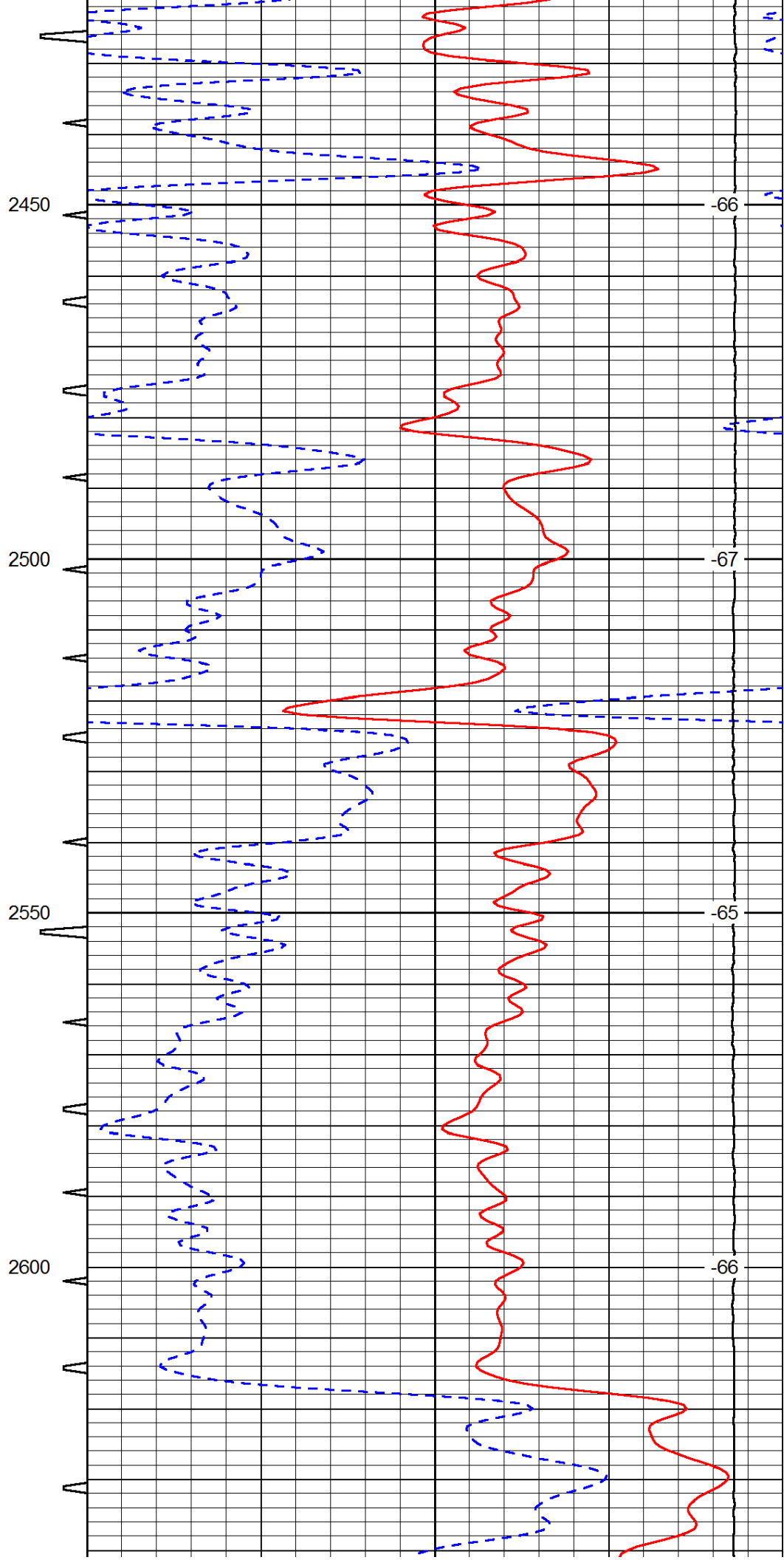
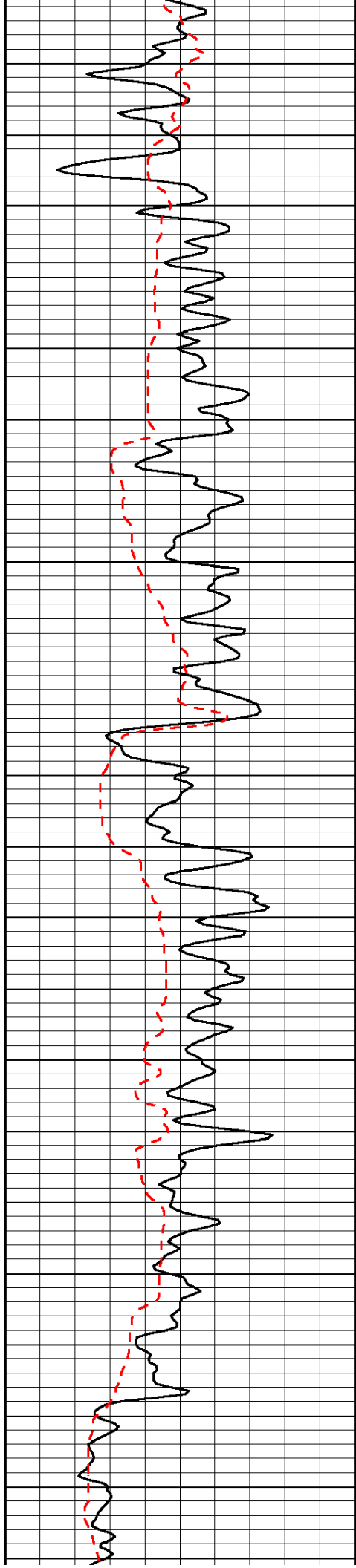


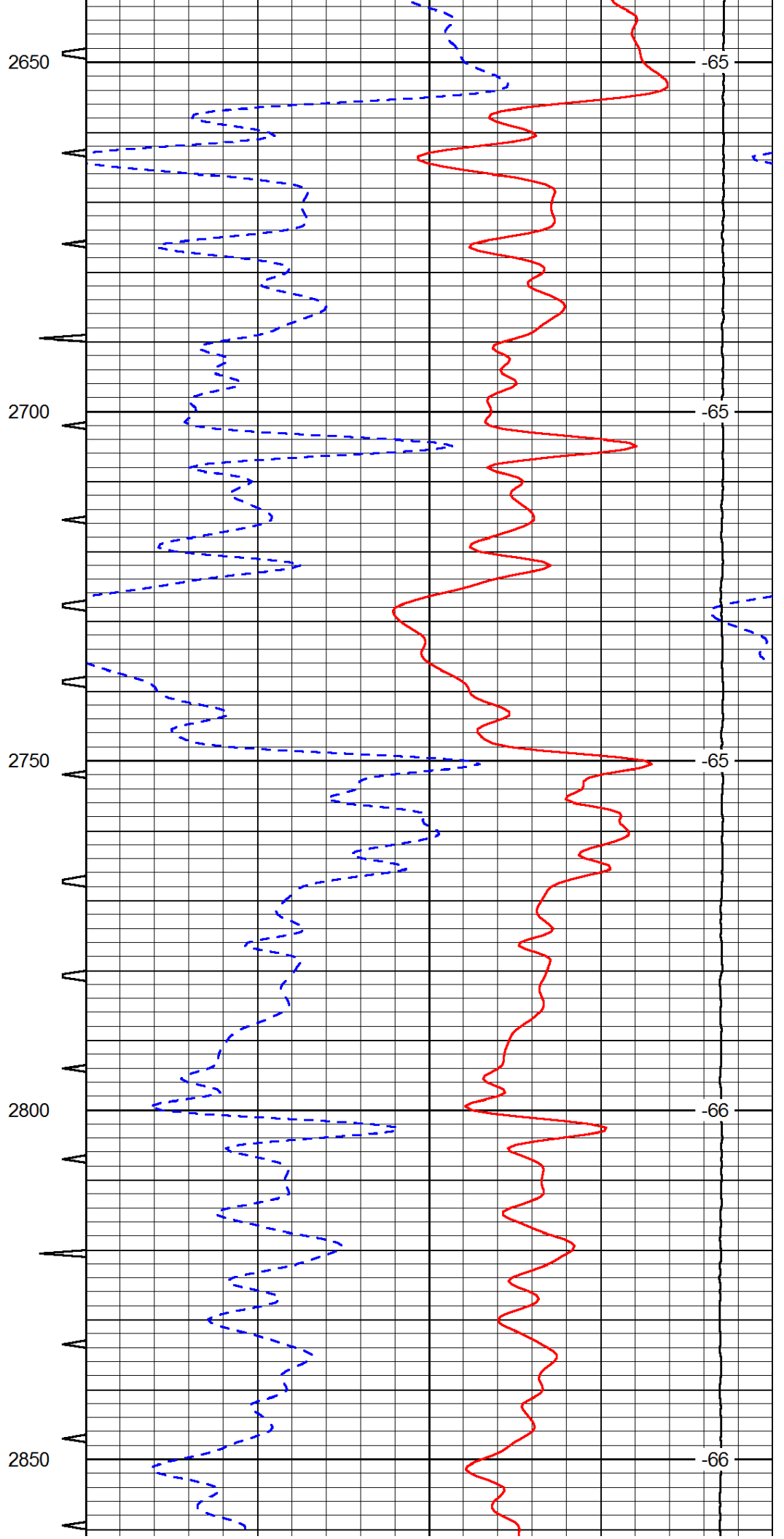
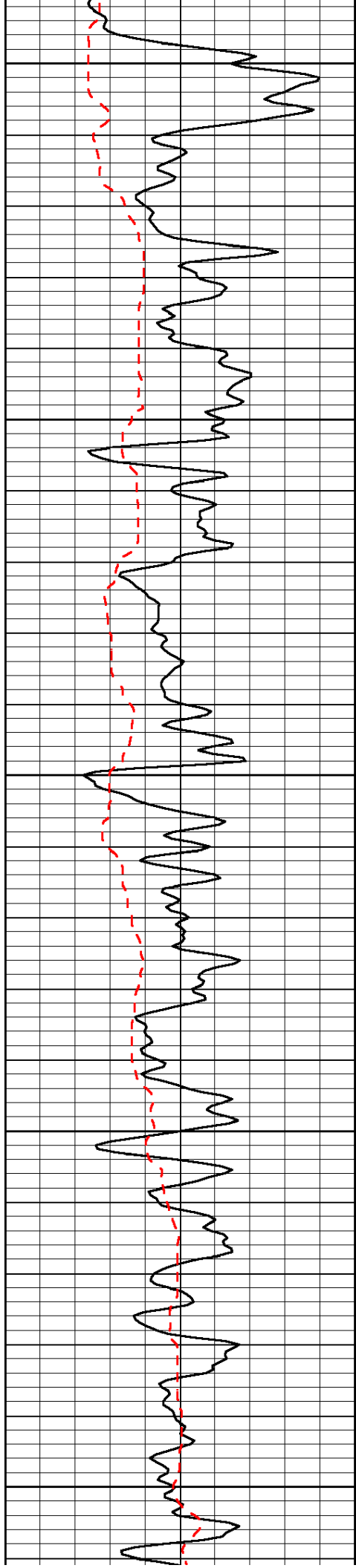


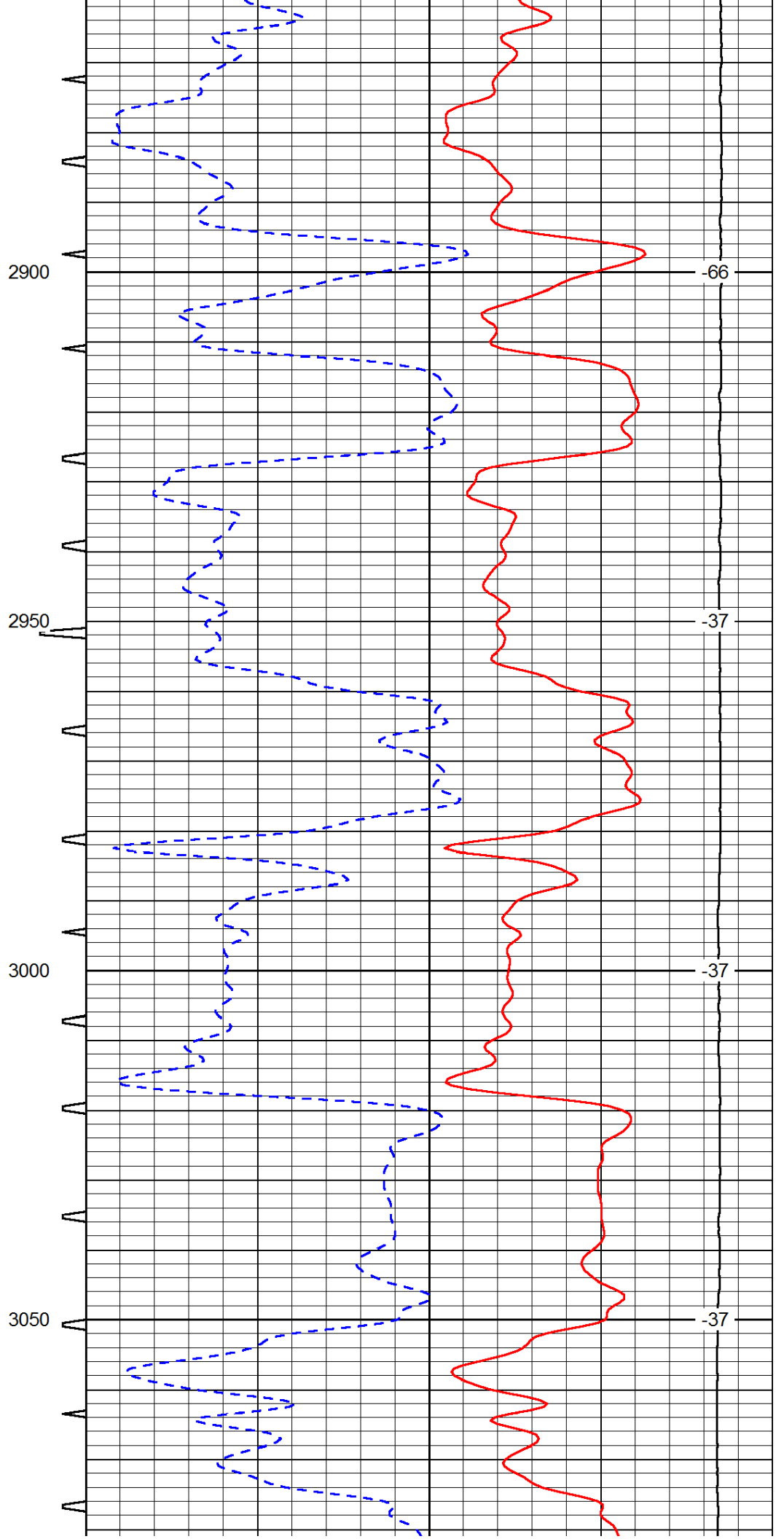
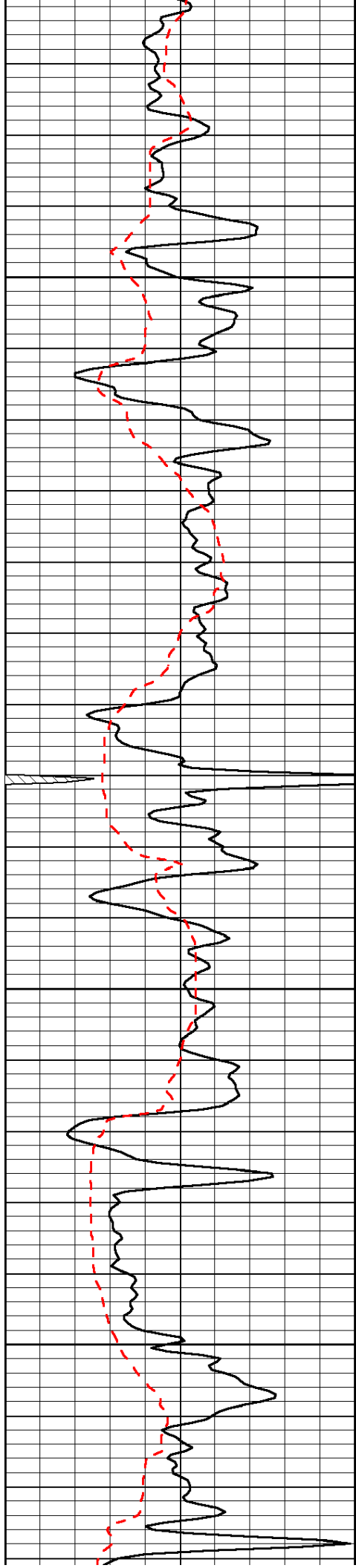


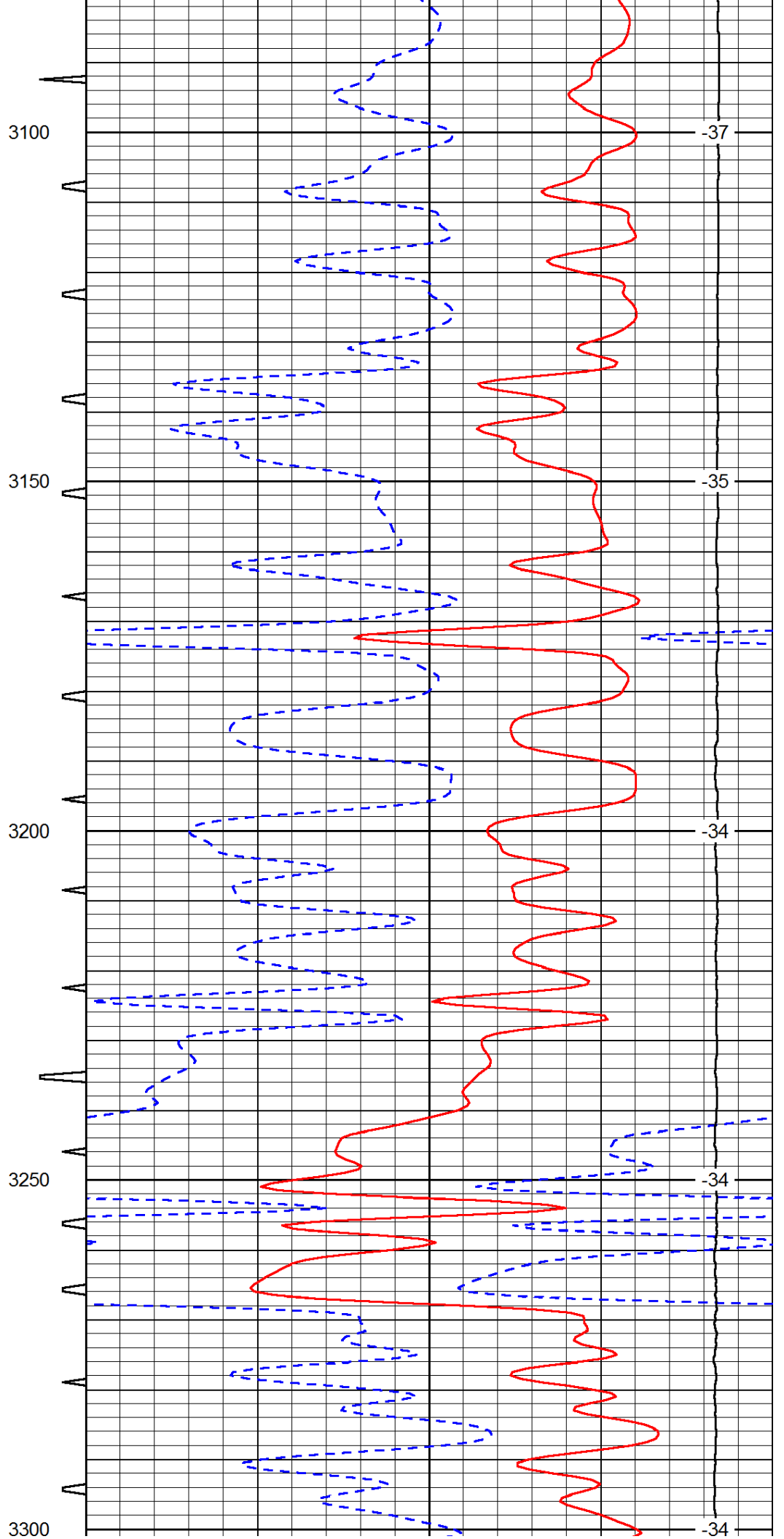
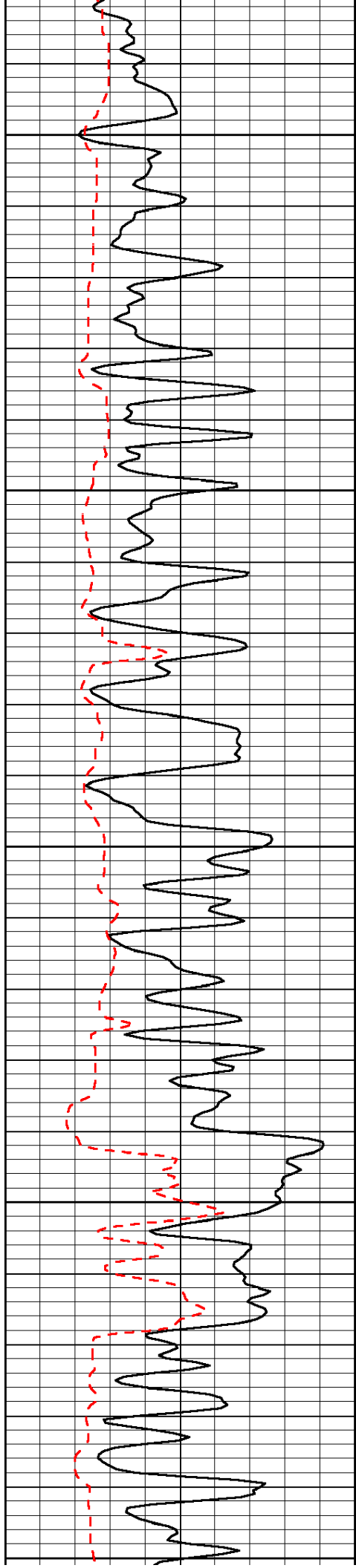


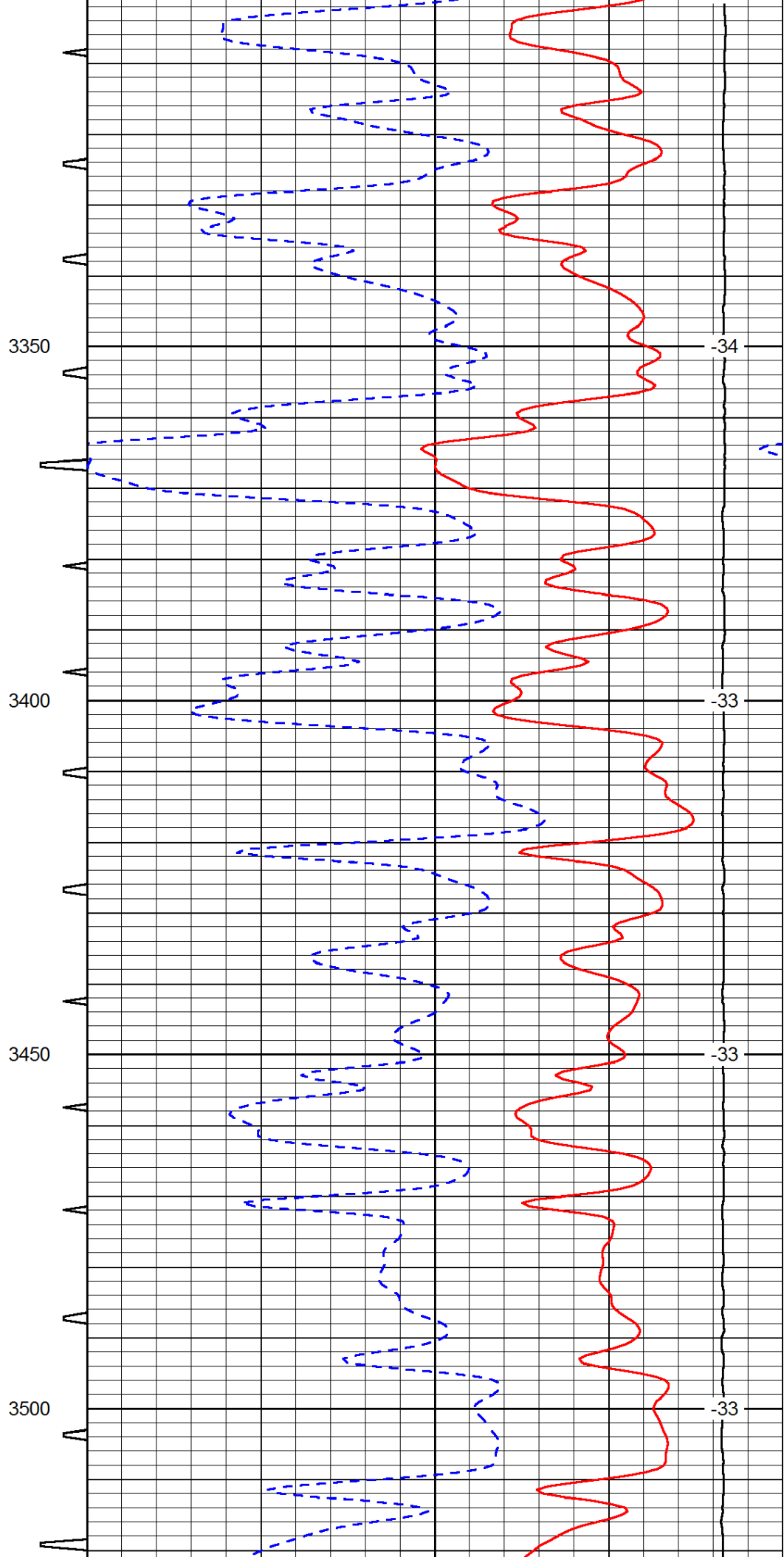
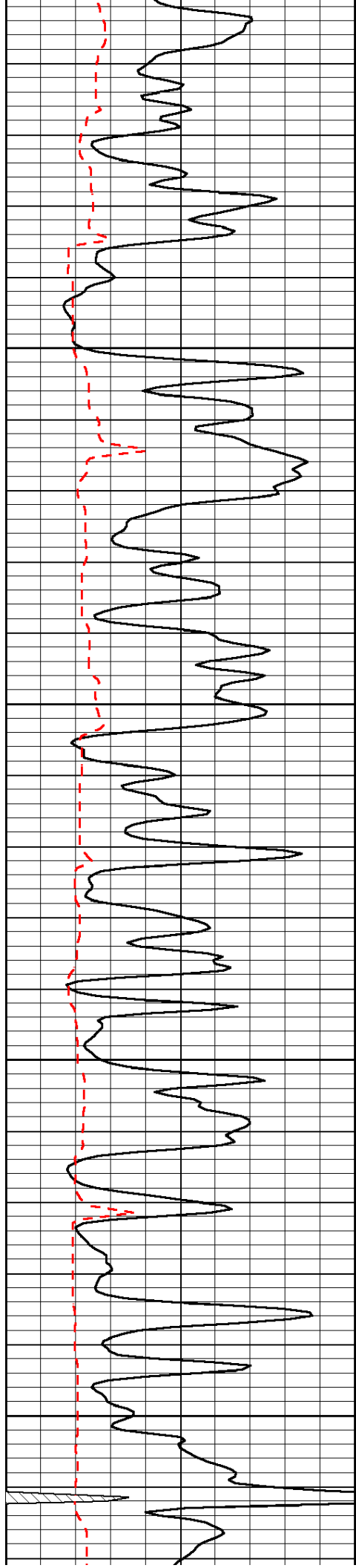




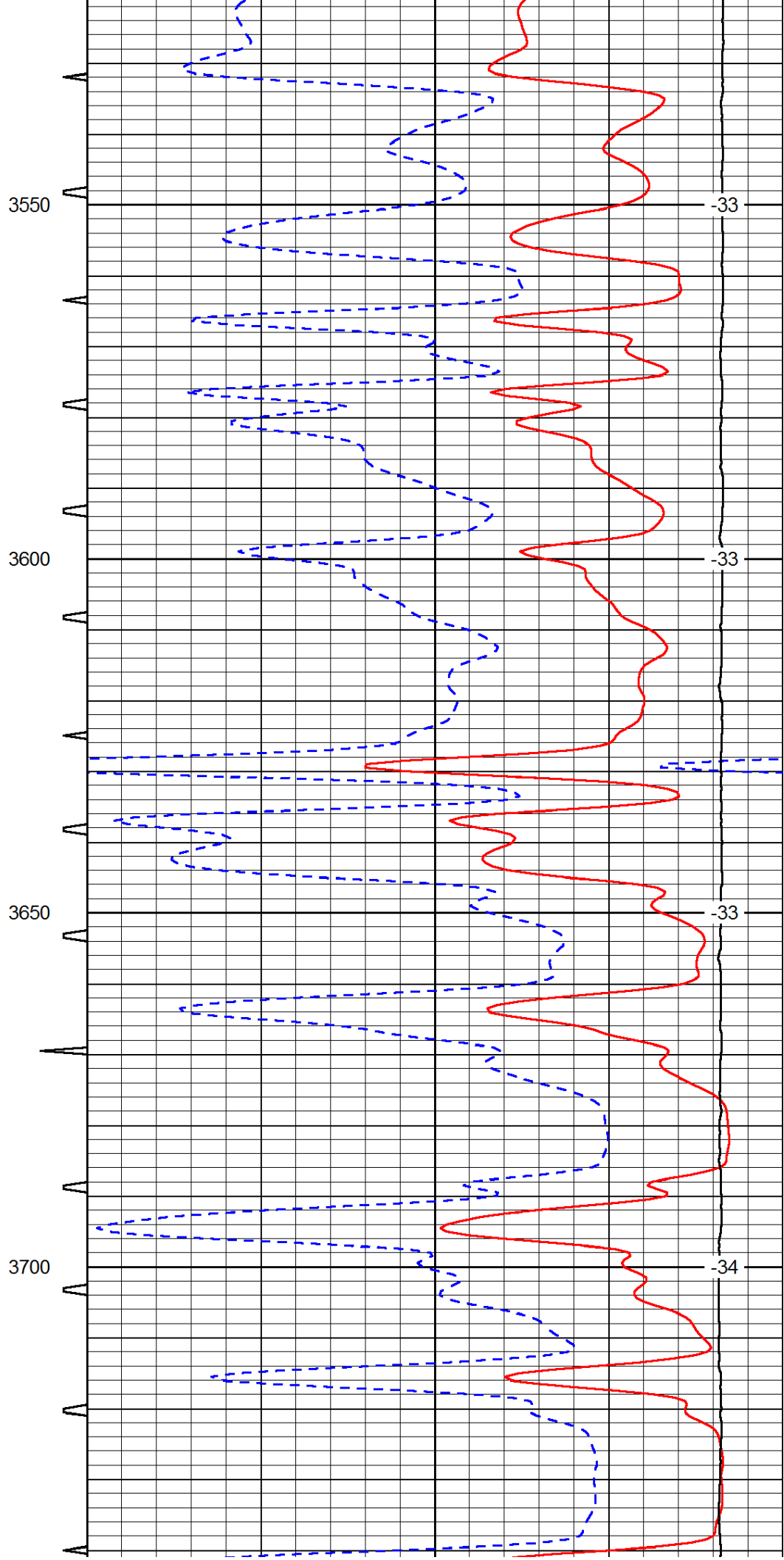
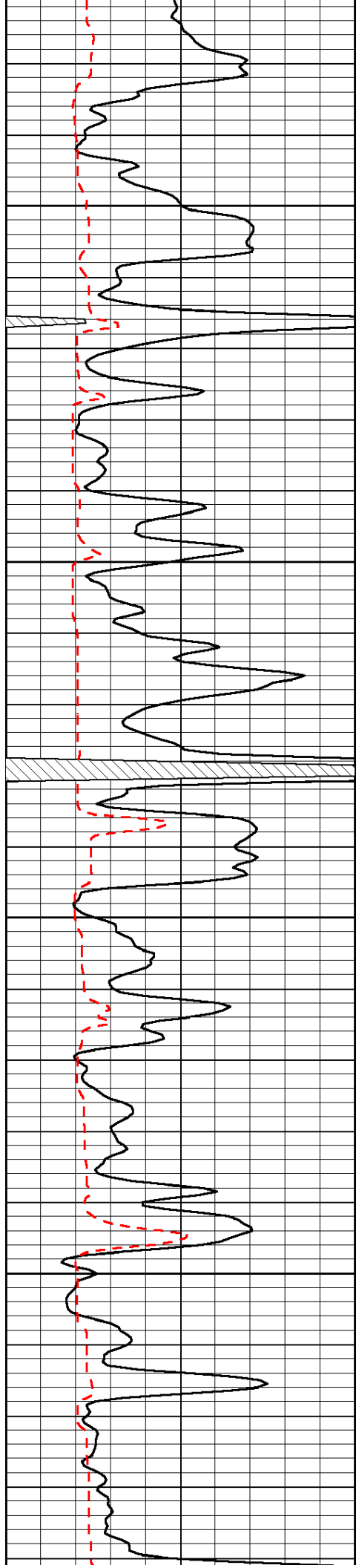


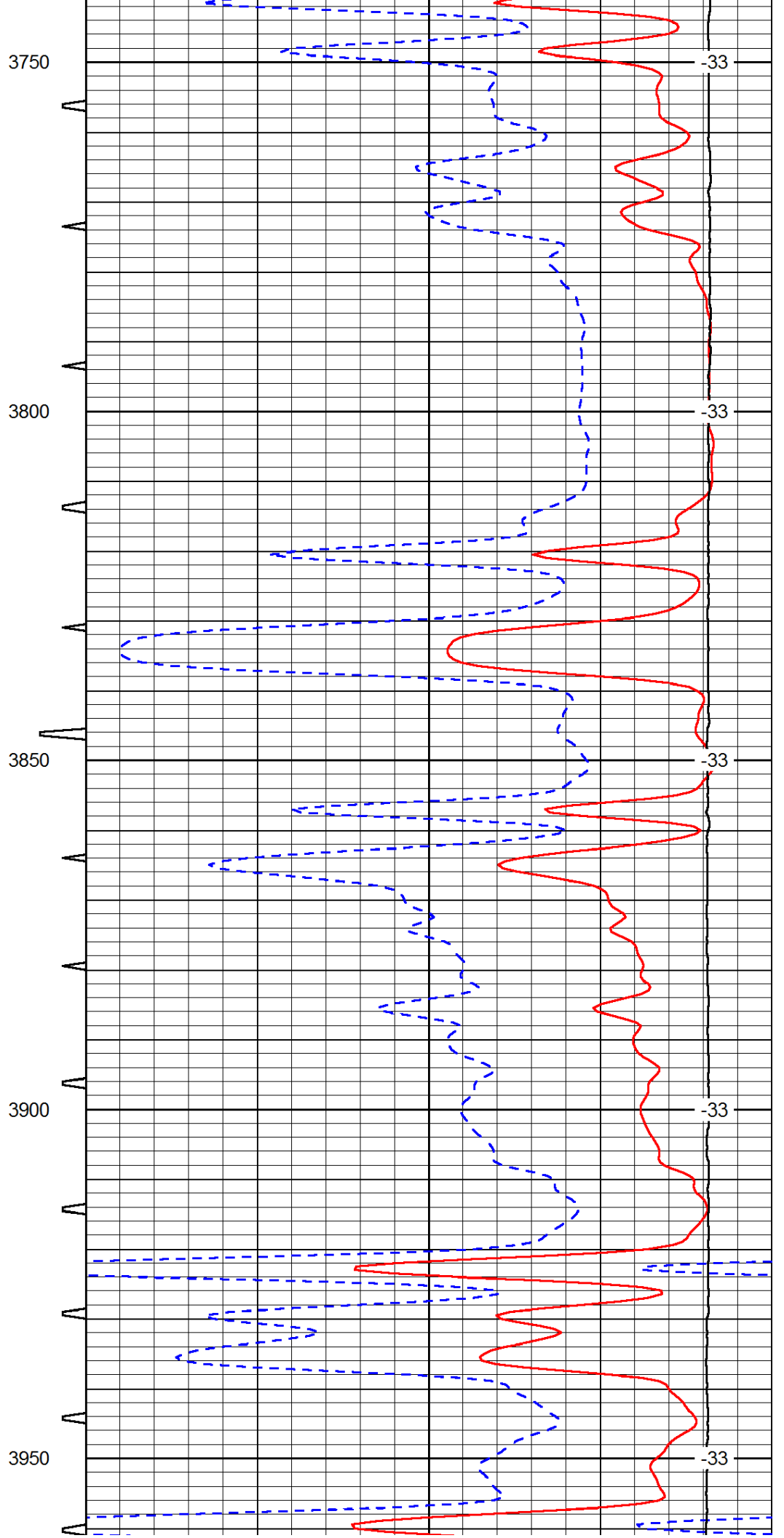
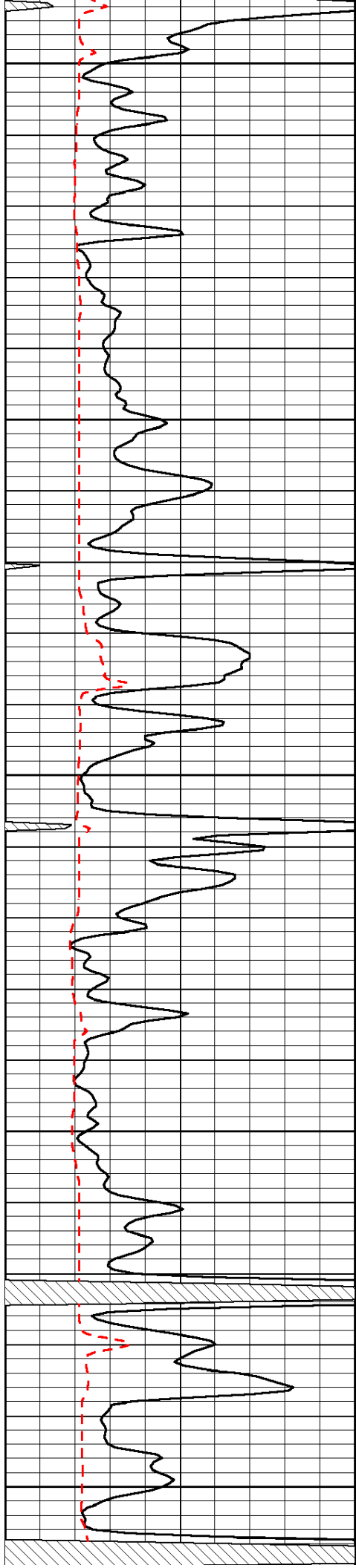


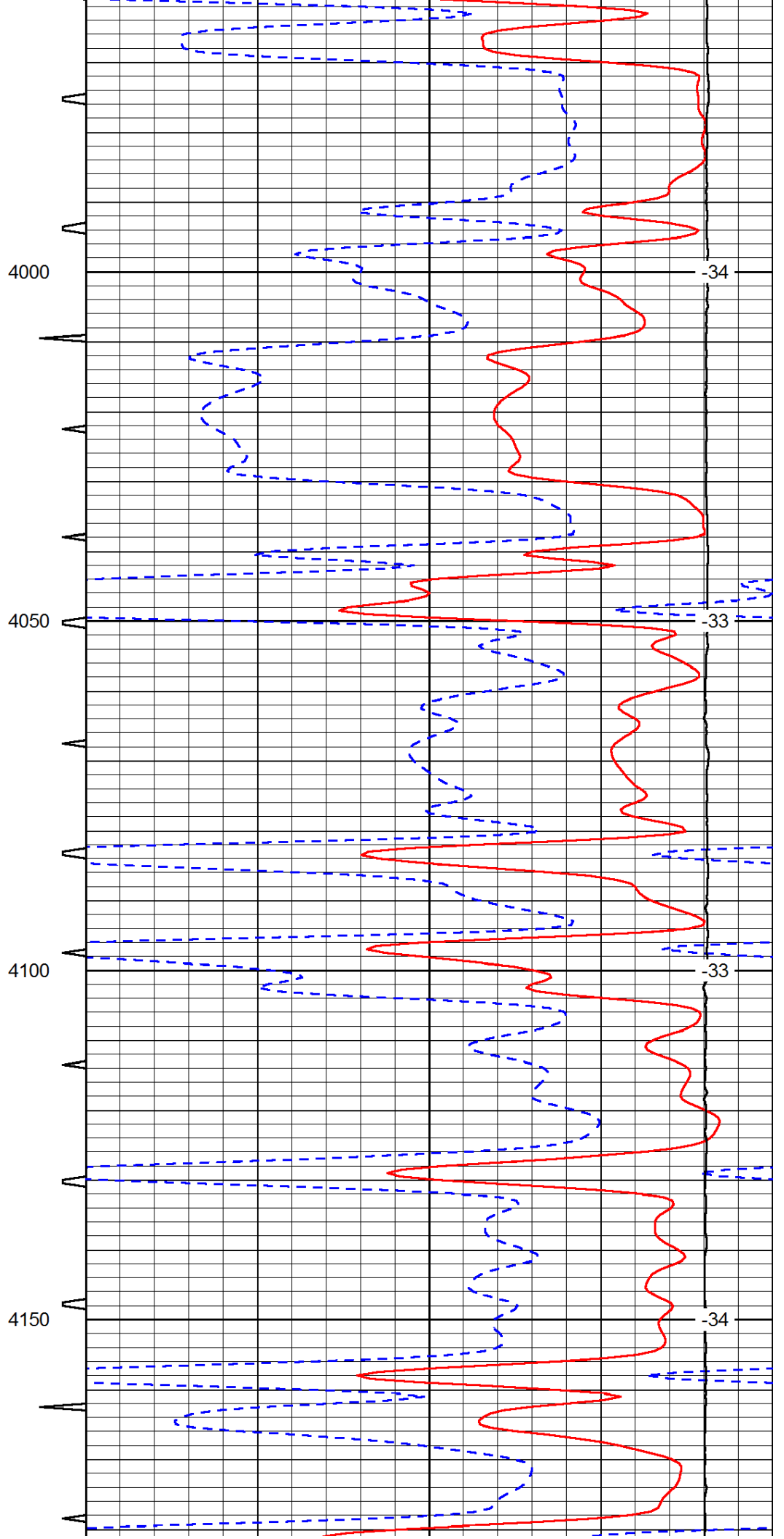
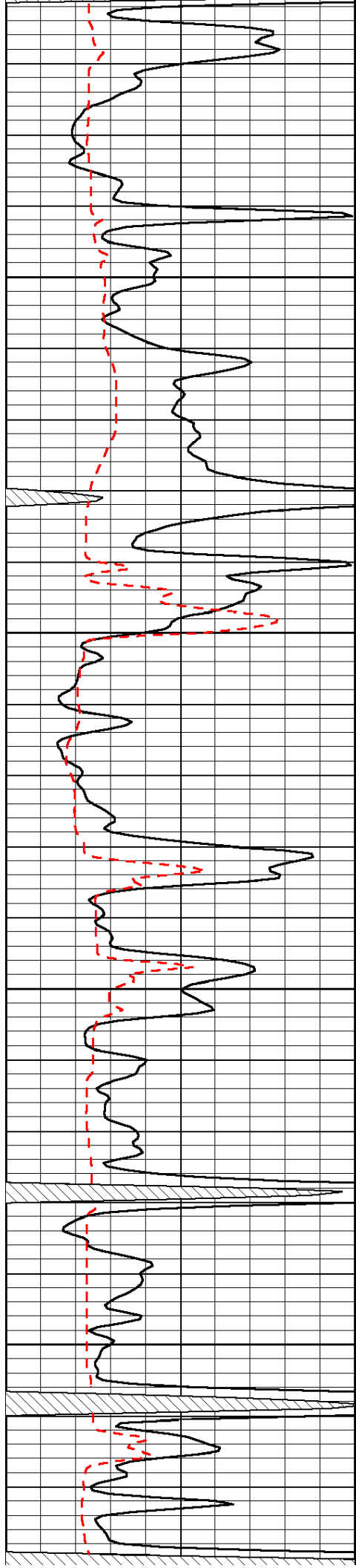


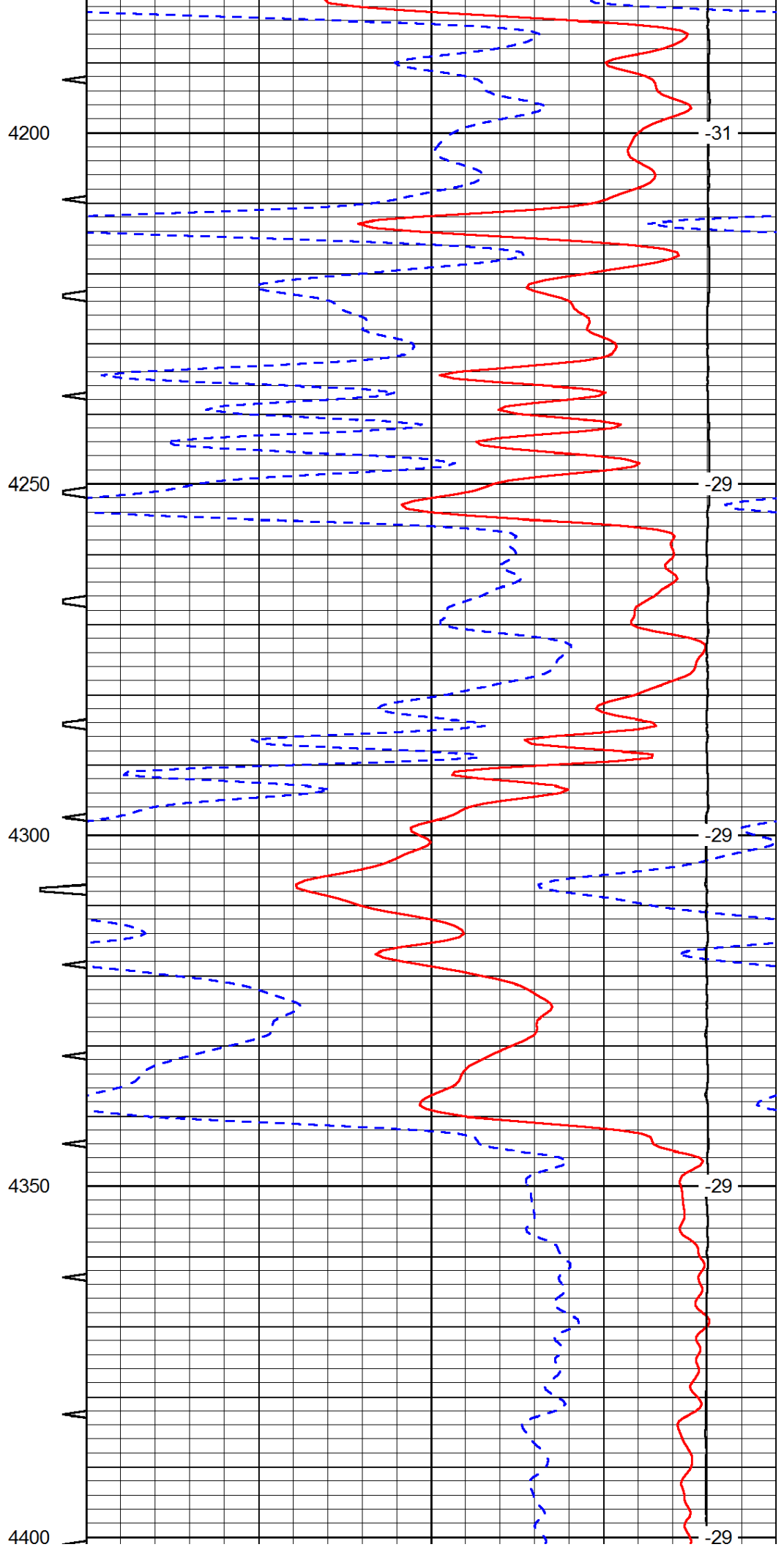
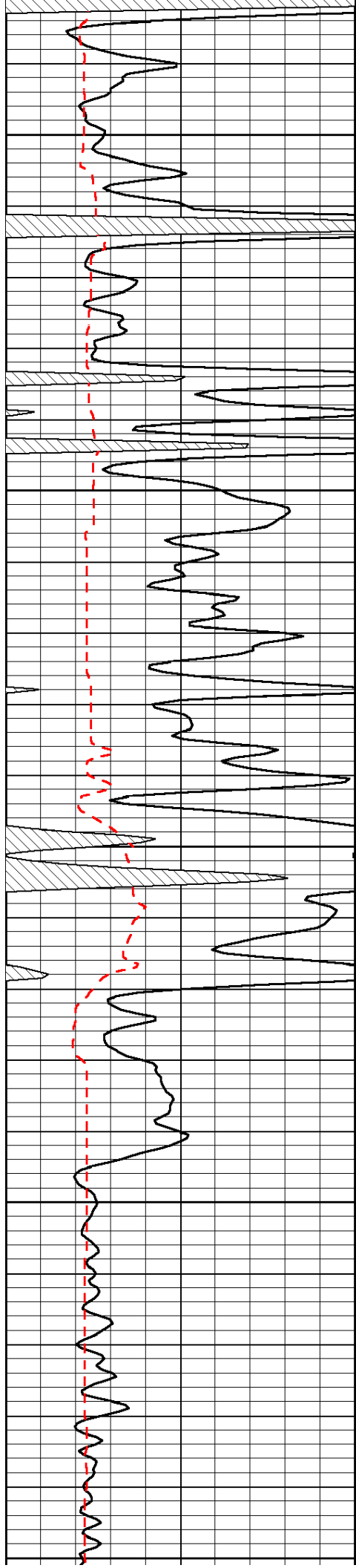


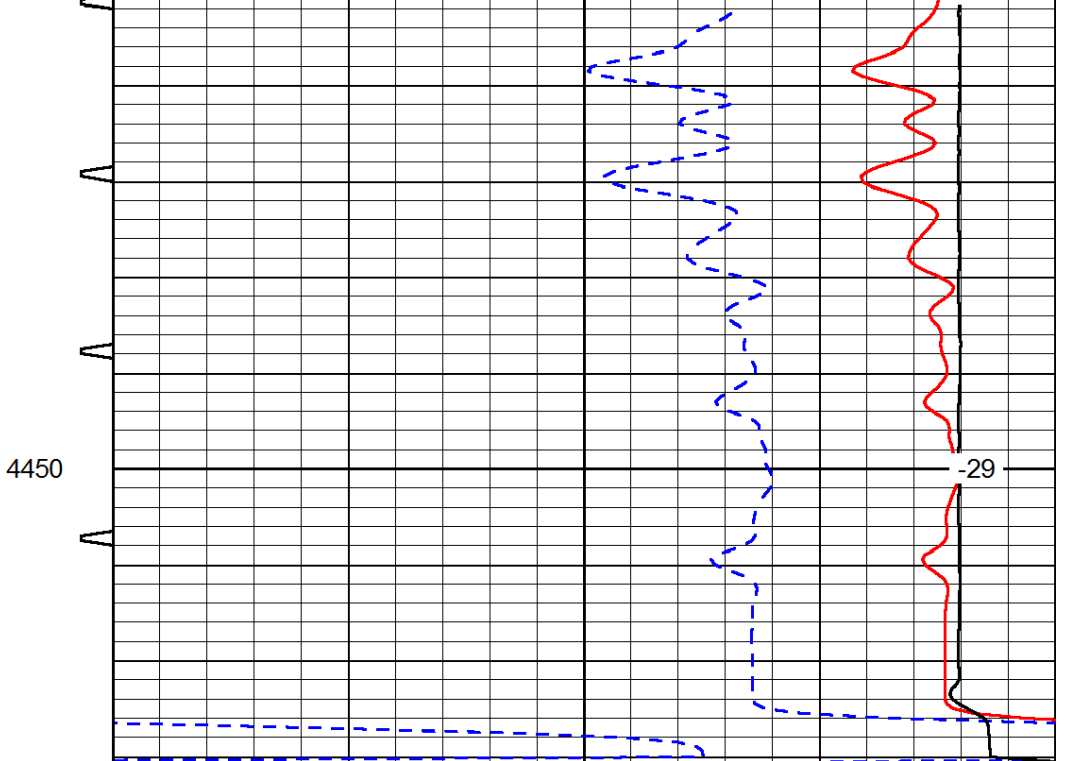
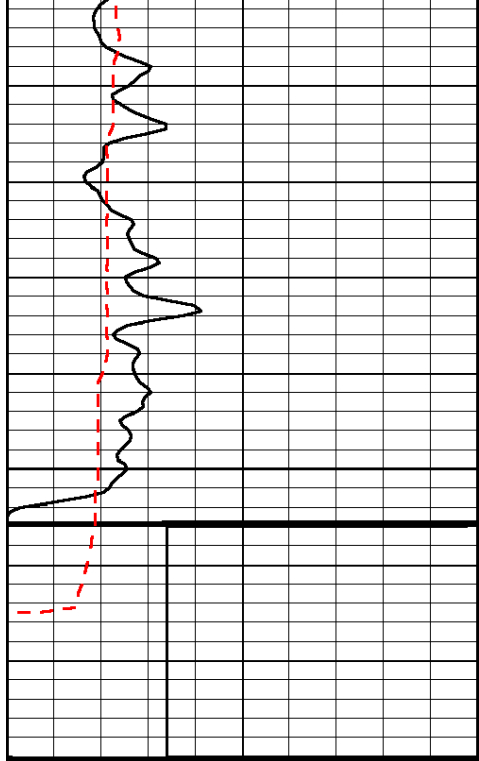












0	Gamma Ray	150	Sonic Int	140	Delta Time (usec/ft)	40
150	Gamma Ray	300	5	0	SPOR	-10
6	Caliper (GAPI)	16		15000	LTEN (lb)	0
						LSPD