

MIDWEST SURVEYS
 LOGGING - PERFORATING - CONSULTING SERVICES
 P.O. Box 68, Osawatomie, KS 66064
 913 / 755 - 2128

GAMMA RAY / NEUTRON / CCL

File No. _____

Company: **Birk Petroleum**
 Well: **Sutherland No.-16**
 Field: **Crandall North**
 County: **Coffey** State: **Kansas**

Location: **2145 FSL & 5115 FEL**
 Sec. 31 Twp. 22S Rge. 16E
 Permian Datum: **GL** Elevation: **1033'**
 Log Measured From: **GL** D.F. NA
 Drilling Measured From: **GL** G.L. 1033'

Date: _____
 Run Number: **One**
 Depth Driller: **1135.0**
 Depth Logger: **1122.5**
 Bottom Logged Interval: **1121.5**
 Top Log Interval: **20.0**
 Fluid Level: **Full**

Type Fluid: _____
 Density / Viscosity: _____
 Salinity - PPM Cl: **NA**
 Max Recorded Temp: **NA**
 Estimated Cement Top: **0.0**
 Equipment No.: _____
 Location: **Osawatomie**
 Recorded By: **Carv Mindsch**
 Witnessed By: **Brian Birk**

BOREHOLE RECORD
 RIN No. _____ TO _____
 BIT FROM _____ TO _____
 One 9.875" 40.0
 Two 6.25" 40.0

CASINGS RECORD
 SIZE WT# FROM TO
 One 7.00" 17.0# 0.0
 Two 2.875" 6.5# 0.0

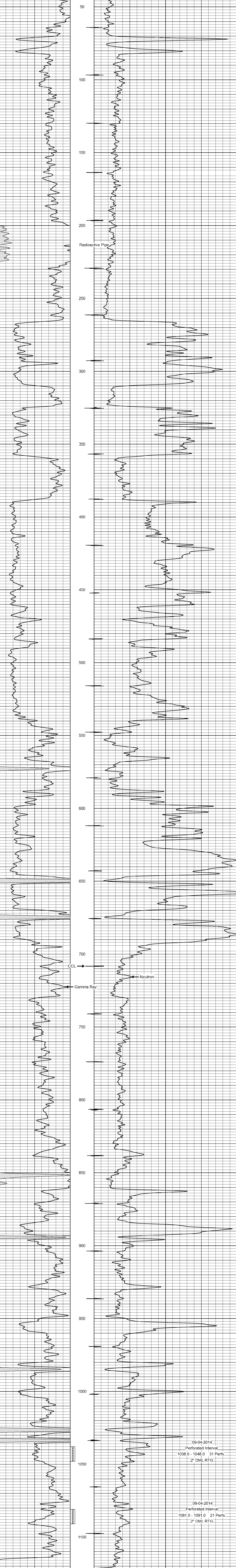
<<< Fold Here >>>

All interpretations are opinions based on inferences from electrical or other measurements and we cannot and do not guarantee the accuracy or correctness of any interpretation, and we shall not, except in the case of gross or willful negligence on our part, be liable or responsible for any loss, costs, damages, or expenses incurred or sustained by anyone resulting from any interpretation made by any of our officers, agents or employees. These interpretations are also subject to our general terms and conditions set out in our current Price Schedule.

Comments

Drilling Contractor :
Birk Petroleum

Database File: sutherland16.db
 Dataset Pathname: pass1
 Presentation Format: gr-n-ccl
 Dataset Creation: Thu Sep 04 08:53:27 2014 by Log SCH 111116
 Charted by: Depth in Feet scaled 1:240



0 Gamma Ray (cps) 150
 150 Gamma Ray (cps) 300
 -1 CCL 1
 100 Neutron (cps) 1900