



MIDWEST SURVEYS
 LOGGING - PERFORATING - CONSULTING SERVICES
 P.O. Box 88, Osawatomie, KS 66064
 913 / 755 - 2128

GAMMA RAY / NEUTRON / CCL

File No.

Company: **Birk Petroleum**
 Well: **Sutherland No.-24**
 Field: **Crandall North**
 County: **Coffey** State: **Kansas**

Location: **495' FSL & 4455' FEL**
NW-SE-SWSW

Sec. 31
 Permit Datum: **GL** Elevation: **1008'**
 Log Measured From: **GL** Elevation: **1008'**
 Drilling Measured From: **GL** Elevation: **GL 1008'**

Date: **09-23-2014**

Run Number: **One**

Depth Driller: **1135.0**

Depth Logger: **1120.5**

Bottom Logged Interval: **1119.5**

Top Log Interval: **20.0**

Fluid Level: **Fill**

Type Fluid		Density / Viscosity		Salinity - PPM Cl		Max Recorded Temp		Estimated Cement Top		Location	
Water		NA		NA		NA		0.0		Caswellome	
Recorded by		Gary Winstead		Brian Birk							
Borehole Record		TO		SIZE		WGT		FROM		TO	
Run No.	BIT	FROM	TO	WT	WT	WT	WT	WT	WT	WT	WT
One	9.875"	4.00	1135.0	7.00"	17.0#	0.0	0.0	0.0	0.0	0.0	1126.0
Two	6.25"	4.00	1135.0	2.875"	6.5#	0.0	0.0	0.0	0.0	0.0	

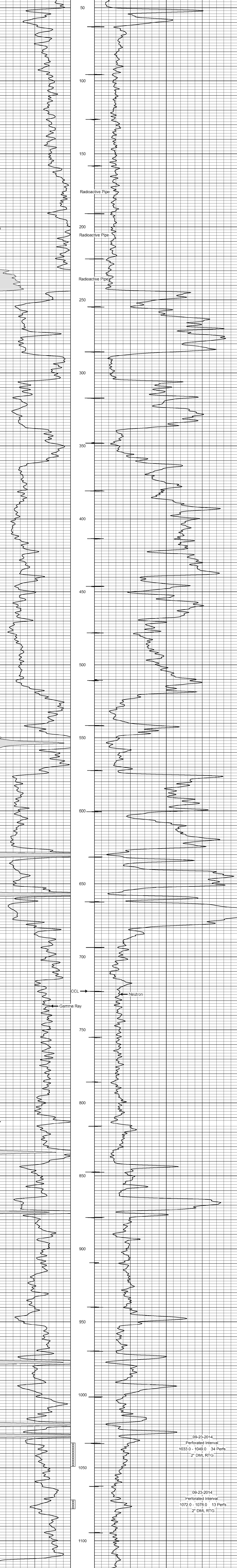
<<< Fold Here >>>

All interpretations are opinions based on inferences from electrical or other measurements and we cannot and do not guarantee the accuracy or correctness of any interpretation, and we shall not, except in the case of gross or willful negligence on our part, be liable or responsible for any loss, costs, damages, or expenses incurred or sustained by anyone resulting from any interpretation made by any of our officers, agents or employees. These interpretations are also subject to our general terms and conditions set out in our current Price Schedule.

Comments

Drilling Contractor :
 Woco Drilling, LLC.

Database File: sutherland24.db
 Dataset Pathname: pass1
 Presentation Format: gr-n-ccl
 Dataset Creation: Tue Sep 23 13:08:17 2014 by Log SCH 111116
 Charted by: Depth in Feet scaled 1:240



Gamma Ray (cps) scale: 0, 150, 300
 Neutron (cps) scale: 100, 1900