



**GAMMA RAY
NEUTRON
COMPLETION LOG**

Company **McFADDEN OIL CO.**
Well **KOSTER #5A**

Field **MORAN**
County **ALLEN** State **KANSAS**

Location: **517S FSL & 1200' FEL
NW NW NE NE**

Perament Datum **SEC 2 TWP 25S RGE 20E**
Log Measured from **G.L.**
Drilling Measured from **G.L.**

Date **5-5-2014**
Run Number **1NW**
Depth Driller **1NW**

Depth Logger **841.1'**
Top Log Interval **SURFACE**
Bottom Logged Interval **841.1'**

Fluid Level **FULL**
Type Fluid **WATER**

Production Casing **2 7/8" @ 850'**
Max. Recorded Temp. **@**
Estimated Cement Top **@**

Calculated Cement Top **@**
Amount & Type Cement **@**
Drilling Contractor **COMPAN' TOOLS**

Equipment Number **107**
Location **UDEN, D**

Recorded By **McFADDEN, L.**
Witnessed By

<<< Fold Here >>>

All interpretations are opinions based on inferences from electrical or other measurements and we cannot and do not guarantee the accuracy or correctness of any interpretation, and we shall not, except in the case of gross or willful negligence on our part, be liable or responsible for any loss, costs, damages, or expenses incurred or sustained by anyone resulting from any interpretation made by any of our officers, agents or employees. These interpretations are also subject to our general terms and conditions set out in our current Price Schedule.

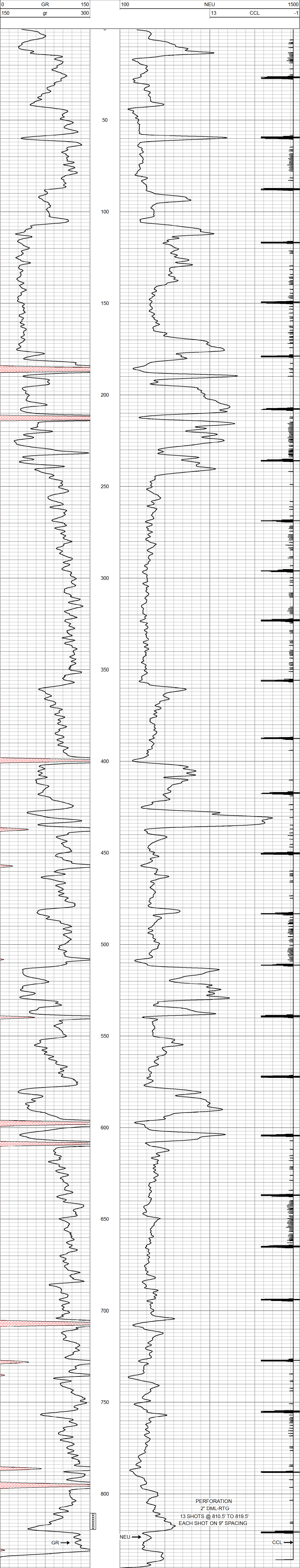
Comments

THANK YOU

Sensor	Offset (ft)	Schematic	Description	Len (ft)	OD (in)	Wt (lb)
GR	7.59		GR-TITAN_169 (TIT169_001) Titan 1 11/16" Gamma Ray	4.75	1.69	20.00
CCL	5.05		CCL-TITAN_169 (TIT169) Titan 1 11/16" Logging CCL	1.83	1.69	7.50
NEU	0.63		NEU-TITAN_169 (TIT169_001) Titan 1 11/16" Neutron	4.33	1.69	20.00

Dataset: koster #5a db: field/well/run/1/pass1
Total Length: 10.92 ft
Total Weight: 47.50 lb
O.D.: 1.69 in

Database File: e:\koster #5a.db
Dataset Pathname: pass1
Presentation Format: gr-n-ccl
Dataset Creation: Mon May 05 10:33:55 2014 by Log Std Casedhole 07122
Charted by: Depth in Feet scaled 1:240



PERFORATION
2" DML-RTG
13 SHOTS @ 810.5' TO 819.5'
EACH SHOT ON 9" SPACING